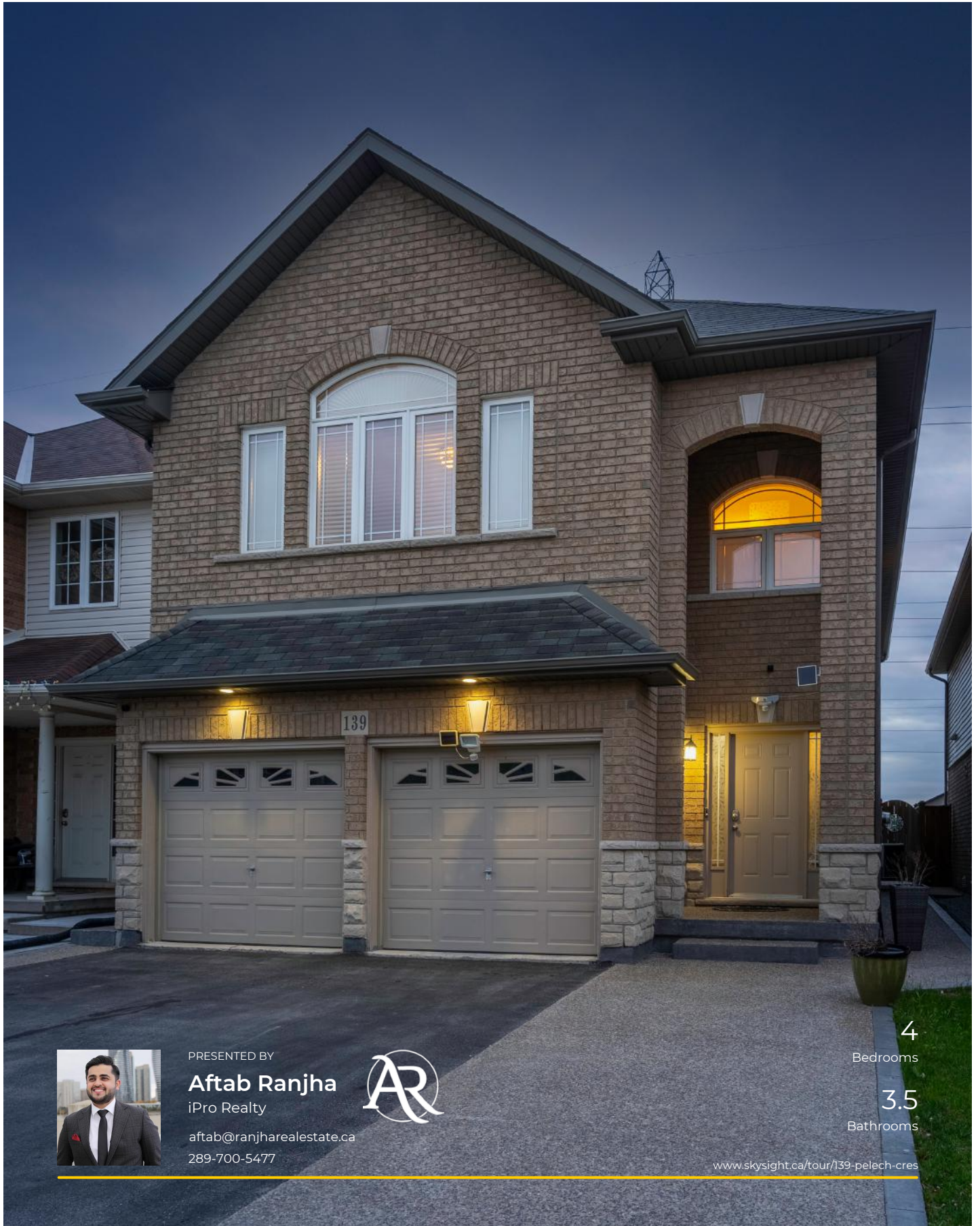


139 PELECH CRESCENT

HAMILTON, ONTARIO, L0R 1P0



PRESENTED BY

Aftab Ranjha

iPro Realty

aftab@ranjharealestate.ca

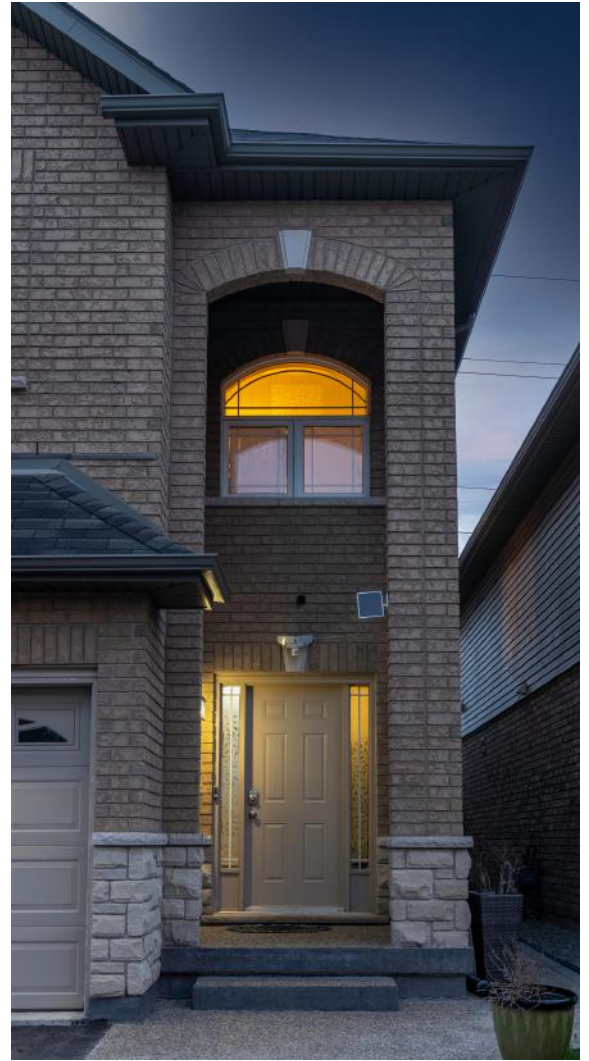
289-700-5477



4
Bedrooms

3.5
Bathrooms

www.skysight.ca/tour/139-pelech-cres



DETAILS

Welcome To Your Next Home 139 Pelech Cres, Stoney Creek in Summit Park w/ Approx 2400 sqft. This Freshly Painted Home Sits On A Premium Lot Backing Onto Green Space With No Rear Neighbours! Close to High School, Parks, Major Shopping & Easy Access To Hwy. This Home Shows Incredibly Well With 4 Beds, 3.5 Baths Open Concept Main Floor W/O To Concrete Patio. Upper Level Feats Home Office & Two Large Primary Bedrooms Each W/ Attached Ensuite & Walk-in Closets.

Other Two Bedrooms Offer Tons Of Space W/ A Common Washroom. The House Feats Double Car Garage & The Driveway Can Park Up to 3 Vehicles. House is Pre-Inspected W/ Full Report Available.

Inclusions: S/S Appliances, Fridge, Stove, Dishwasher, Microwave, Washer, Dryer, Window Coverings, Light Fixtures, Shed, Blinds. HWT Rental.

Offers Will Be Gladly Reviewed On June 8 At 6Pm. Pre-Emptives Could Be Considered.

Total Parking: 4-5 Cars

Age of Home: 2012

Builder: Multi-Area Developments

Approx Square Footage: 2400

Main Level

LIVING, DINING, & KITCHEN



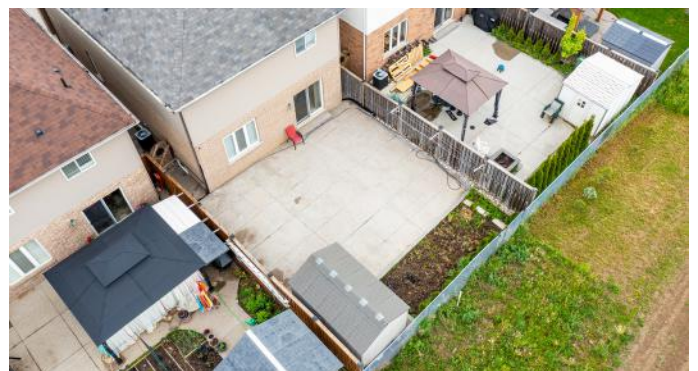
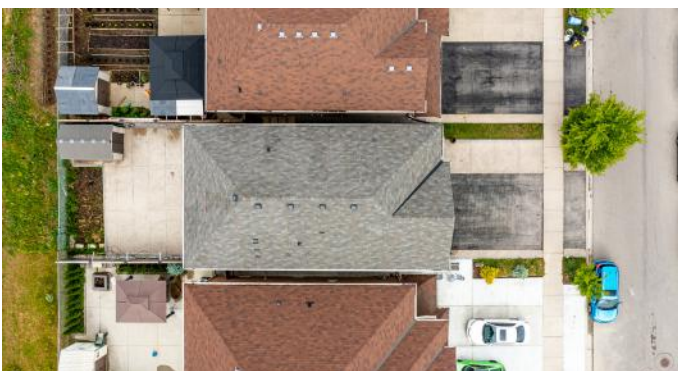
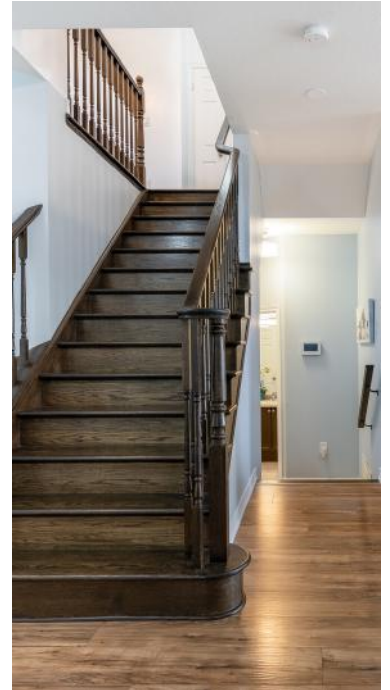
Second Floor

BEDROOMS & BATHROOM



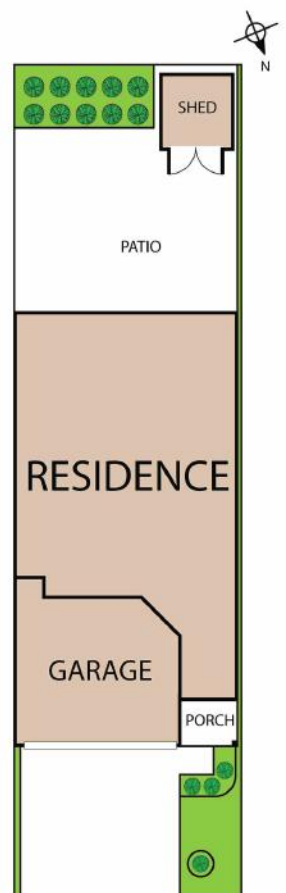
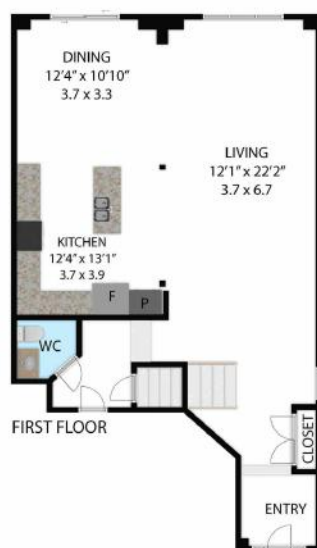
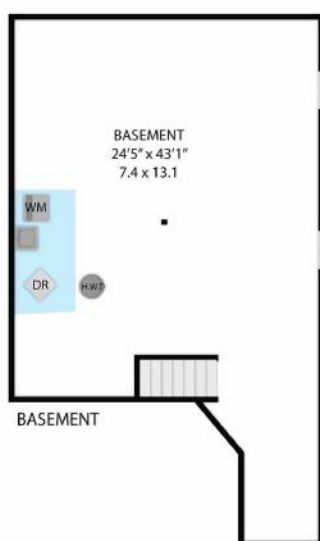
Main Level & Backyard

FOYER & PATIO



Exterior





139 Pelech Crescent, Hamilton L0R 1P0

TOTAL APPROX. FLOOR AREA: 2400 SQ. FT.

Whilst every attempt has been made to ensure the accuracy of the floor plan contained here, measurements of doors, windows, rooms and any other items are approximate and no responsibility is taken for any error, omission, or misstatement. This plan is for illustrative purposes only and should be used as such by any prospective purchaser.



139 PELECH CRESCENT

HAMILTON, ONTARIO, L0R 1P0

4 Bedrooms 3.5 Bathrooms 2 Car Garage 2,400 SQ.FT Above Grade (Approx.)



PRESENTED BY

Aftab Ranjha

Sales Representative

aftab@ranjharealestate.ca

289-700-5477

iPro Realty

Brokerage

55 City Centre Drive #503

Mississauga, ON

905-268-1000

