

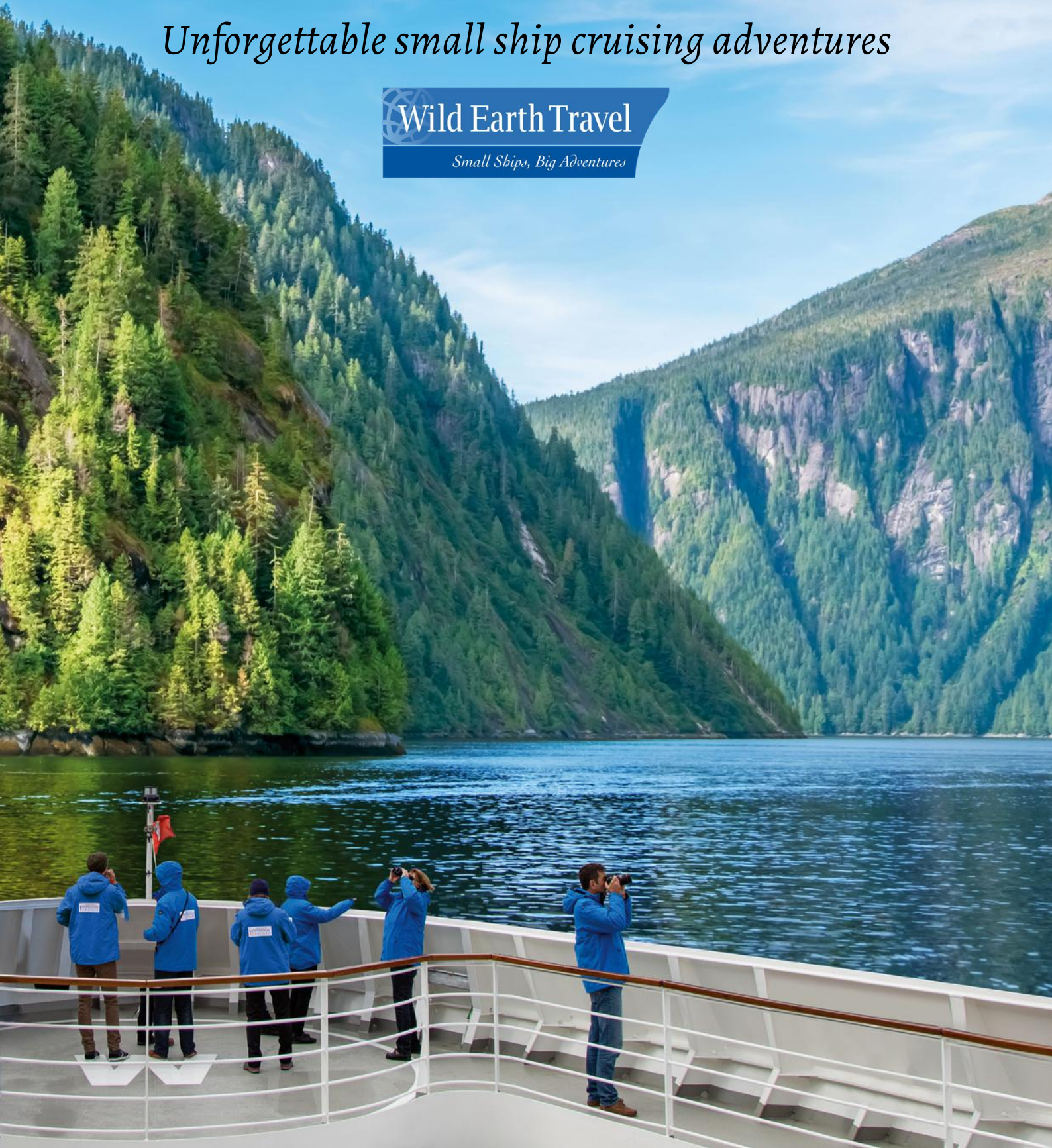
# ALASKA

*Unforgettable small ship cruising adventures*



Wild Earth Travel

*Small Ships, Big Adventures*



# Wild Earth Travel has:

**40+** different Alaska itineraries ranging from **6** to **30** days. Choose from **20+** Alaskan small ships ranging from **8** to **250+** passengers from intimate expedition vessels, to luxurious ships.



# Table of CONTENTS

## **4 ALASKA GUIDE**

What you need to know before booking Alaska.



## **5 ABOUT US**

Learn about Wild Earth Travel's small ship cruising journey.

## **6 OUR ALASKA TRAVEL**

We tell you our Alaskan highlights and why we keep going back!



## **8 ALASKAN SHIPS**

Uncover the vessels we use to navigate Alaska's wonders.

## **9 ITINERARIES: CLASSIC**

See why Alaska's classic 8-day itineraries are our most popular.



## **12 ITINERARIES: IN-DEPTH**

Spend more time or go further afield on these longer voyages.



## **16 ITINERARIES: BOUTIQUE & LUXURY**

Experience Alaska aboard a boutique or luxury vessel.

## **18 ITINERARIES: ALASKA & BEYOND**

Journey to Alaska and the Northwest Passage on these voyages.

## **19 EXTENDING YOUR STAY**

We can help you with your pre- and post- cruise needs.

**Price Guide:**

US\$4K to \$40K. Expedition to luxury.

**When to Travel:**

May to September. Expect daytime temperatures between 12° and 18°C with nighttime five degrees cooler (although in summer there is daylight most of the time). Temperatures rarely exceed 24°C, even in mid-summer. Southeast Alaska weather is influenced by its maritime climate, high mountains, and extensive glacier coverage.

**Duration:**

The 8-day voyage which incorporates Glacier Bay National Park is our most popular itinerary. For a more extensive Alaskan adventure, there are trips of up to 15 days, which can even take in the Aleutian Islands.

**When to Book:**

It's recommended to book more than 6 months in advance as dates book out quickly particularly for the peak period June - August.

**Pre-/Post- Cruise Options:**

- Depending on the length and interests of your trip, you may start (or end) your journey at Juneau, Sitka or Ketchikan, with flights in and out of Southeast Alaska from Seattle. Some ships travel from Vancouver
- Rocky Mountaineer train journey
- Visit Denali National Park from Anchorage

**Other handy tips?**

- Pack layers, as Alaska's weather can be unpredictable. Include waterproof and windproof outer layers, as well as warm insulating layers



Scan for voyages or click [here](#)



# ALASKA GUIDE

Rugged fjords, wild glaciers, countless rivers and lakes, majestic mountain peaks, and wildlife in abundance – Alaska is one of the last unspoiled places in the world. It is a place that resonates adventure and exploration and discovering Alaska by small ship only adds to the adventure by allowing access to remote and untouched wilderness that may otherwise be inaccessible. With our team having travelled extensively through the region, we are well placed to help find the right Alaskan trip for you! Here's a start on where to visit..

## WHERE TO VISIT

### Alaska's Inside passage

A narrow strip of coastline and a large archipelago of over 1,000 islands constitute this unique region, which boasts some of the world's most remarkable geography, as well as a myriad land and marine mammals.

### Glacier Bay National Park

Glacier Bay contains eight tidewater glaciers, and provides pristine habitat for a wide-array of wildlife, including both brown and Black Bears, wolves, Mountain Goats, Steller Sea Lions and Humpback Whales.

### Tracy Arm Fjord

This glacial fjord is renowned for its pristine waterfalls, towering icebergs and cliffs that rise from the sea. At 50km long and averaging just over a kilometre wide, small ships navigate the length of the arm with Zodiac excursions providing the opportunity up-close encounters.

### Misty Fjord National Monument

This monument is noted for its steep cliff walls, lush vegetation, and array of Southeast Alaska wildlife species.

### Aleutian Islands

These islands comprise a slender stretch of coastline and an expansive archipelago consisting of over 1,000 islands, forming a distinctive region celebrated for its extraordinary geography and diverse population of marine mammals and seabirds.



Wild Earth Travel is owned and operated by expedition leaders with over 20 years' experience voyaging, leading and creating expeditions all over the globe. While based in Christchurch, New Zealand, we have led expeditions, travelled extensively within and sent many happy travellers to Alaska where we work with a range of operators, including many locally owned suppliers, to bring you the best of the region.

If you enjoy a more personal style of travel where you interact with smaller groups, discover more and engage with your fellow travellers, then our journeys and programs could be just the ticket for you! By travelling with Wild Earth Travel we guarantee that you will spend less time in queues and more time experiencing the unique destinations on the itinerary.

While you will find a selection of hand-picked journeys in this brochure, it is by no means everything we have on offer. With over 1,500 journeys available worldwide, If you don't find a program that suits your requirements, please check our website or contact us to start your adventure!

[www.wildearth-travel.com](http://www.wildearth-travel.com)  
[info@wildearth-travel.com](mailto:info@wildearth-travel.com)



*Reservation Specialist, Ellen, glacier spotting in Alaska.*



# WILD EARTH



# OUR HIGHLIGHTS

There are far too many remarkable experiences in Alaska to list them all—but to give you a taste of what’s in store, we’ve shared some of our favourite highlights.

## Wild Encounters

Wildlife is one of Alaska’s greatest highlights, and small ship cruising puts you right in the middle of it. Typical encounters include humpback whales breaching and feeding in rich coastal waters, or pods of orcas slicing through fjords. Along the shoreline, it’s common to spot brown bears fishing for salmon, bald eagles circling overhead, sea otters drifting in kelp forests, and sea lions hauled out on rocky outcrops.

As Ellen described one of her wildlife highlights, “We had hundreds of Dall’s Porpoise swimming alongside us, with three whales coming up for air — the ship was surrounded by wildlife. With only a small number of people onboard, we were totally outnumbered!”

## Historic Outposts

Alaska’s remote coastal towns offer a fascinating glimpse into frontier life shaped by gold rush ambition, maritime trade, and Indigenous heritage. Places like Skagway, Sitka, and smaller village communities reveal layers of Russian influence, pioneer history, and enduring local culture. Wooden boardwalks, historic buildings, and small museums tell stories of resilience in harsh conditions, while today’s residents continue traditions rooted in the sea and land. It’s a compelling blend of past and present in truly remote settings.



“Seeing the incredible variety of wildlife and culture from Nome to Vancouver was a once-in-a-lifetime experience. In Katmai National Park, grizzly bears initiated their hunting sessions along the river systems, while the waters around Prince Rupert and Albert Bay were alive with orcas, Steller sea lions, and dolphins moving through the channels.”

Aaron Russ,  
Wild Earth Travel general manager.

## Glaciers Up-Close

Few travel experiences rival the raw scale and beauty of Alaska’s glaciers. On a small ship voyage, guests can cruise deep into narrow fjords and quiet inlets where towering ice walls rise straight from the sea. And Zodiac (or skiff) excursions will get you even closer. The most unforgettable moment comes with the sound of cracking ice, followed by the dramatic sight of a glacier calving — massive chunks breaking away and crashing into the water below. It’s powerful, unpredictable, and deeply moving. From the vivid blue tones of ancient ice to the echoing roar across the water, glacier calving up close is a defining Alaska experience you won’t forget.





## Untamed Wilderness

Alaska's wilderness is vast, raw, and deeply immersive — a landscape where nature still sets the rules. Travellers move through towering mountain ranges, dense temperate rainforests, and icy waterways carved by ancient glaciers, with each turn revealing a new scale of dramatic scenery. With few signs of human settlement, the sense of isolation is striking, creating a rare opportunity to experience nature in its purest form. Whether viewed from the deck or explored by Zodiac/skiff, Alaska's wilderness delivers a constant reminder of how powerful and untouched the natural world can be. As reservation expert Kylie reflected, "Glacier calving, ice floes, clear blue skies and lots of wildlife opportunities including whales, bears, sea lions and seals all made it a trip to remember!"

“Highlights included waking up next to Dawes Glacier with a whale spouting, witnessing a bear foraging on the beach after its hibernation, but the ultimate highlight was kayaking to observe wildlife up close, including a rare encounter with a sea otter.”

Neil Saunders, Wild Earth Travel business development manager.

## Active Adventures

Alaska is ideal for active travellers seeking full immersion in its wilderness. Kayaking offers close-up views of glacier-carved coastlines and shoreline wildlife, while hiking—known locally as “bushwhacking”—explores untouched forests and rugged ridgelines. Paddleboarding provides a relaxed way to glide across calm, glassy bays framed by peaks and ice, while Zodiac and skiff excursions reach remote coves and tidewater glaciers.



## Immersive Inuit Culture

Alaska's Indigenous cultures offer a meaningful way to understand the deep connection between people, land and sea. Travellers may meet Alaska Native peoples such as the Tlingit and Haida, experiencing storytelling sessions, traditional dance performances, and visits to cultural centres and carving workshops. It's an authentic, hands-on cultural experience that adds depth and perspective to the journey.



# ALASKA SHIPS

Wild Earth Travel works with small ship operators who can access the remote areas and narrow passages that larger ships cannot reach. This allows for a more intimate exploration of the Alaskan wilderness, including secluded coves, fjords, and wildlife habitats. These small ships provide better opportunities for wildlife viewing as they can manoeuvre closer to shore, offering excellent views of marine mammals, birds, and other wildlife without disturbing their natural habitat. Our small ships are also able to offer flexible itineraries, allowing for spontaneous stops to observe wildlife or explore interesting sights along the coast. We have access to over 20 ships from small passenger expedition vessels to larger, more luxurious ships – please see right for a full list of our vessels and links to our website for more information.



## Expedition Fleet

These ships have an emphasis on adventure and reaching hard-to-reach places, so are generally smaller in size (40-140 passengers):

[American Cruise Line Ships](#)

[Greg Mortimer](#)

[Island Roamer](#)

[Maple Leaf](#)

[National Geographic Quest](#)

[National Geographic Resolution](#)

[National Geographic SeaBird](#)

[National Geographic SeaLion](#)

[National Geographic Venture](#)

[Safari Endeavour](#)

[Safari Explorer](#)

[Safari Quest](#)

[Swell](#)

[Wilderness Discoverer](#)

[Wilderness Legacy](#)

## Luxury Expedition Fleet

These ships are generally bigger (250+ passengers) to accommodate luxury amenities including onboard pools, bars, gyms, etc. We have access to a range of itineraries on these ships:

[Fridtjof Nansen](#)

[Hanseatic Inspiration/Nature/Spirit](#)

[Road Amundsen](#)

[Silver Moon](#)

[Silver Whisper](#)

IN ALASKA, WE HAVE ACCESS TO...

**40+**  
Itineraries

**20+**  
Small Ships

**8-250+**  
with Passengers



Scan for  
Alaska ships  
or click [here](#)



# Alaska Itineraries

On the following pages you'll find some of our most popular Alaska itineraries ranging from the classic 8-day voyages to something a little longer and more in-depth. We do, however, have access to many more itineraries, so if there's something you are looking for that doesn't appear here, please contact us or take a look online.

If you are interested in any of the itineraries, it's also worth being in touch for information on any current promotions available, which don't appear in this guide.

**[info@wildearth-travel.com](mailto:info@wildearth-travel.com)**

**[www.wildearth-travel.com/cruise/alaska](http://www.wildearth-travel.com/cruise/alaska)**



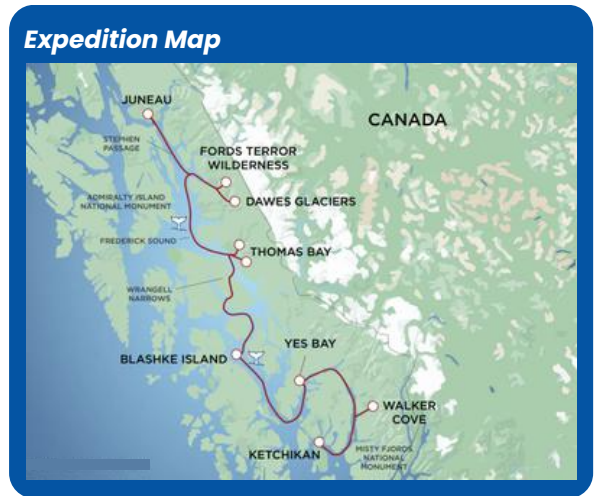
# Alaska's Fjords & Glaciers with Keticikan



8 days | FROM US\$4,400\*pp + port charges of US\$300-500pp.  
Aboard Wilderness Adventurer | Departures Apr to Sep each year  
[More information here](#)

## Itinerary at a Glance

DAY 1: Juneau. Embark and set sail.  
DAY 2: DAY 2: Endicott Arm & Dawes Glacier. Cruise a dramatic fjord of towering cliffs, icebergs, and waterfalls. View Dawes Glacier's immense blue face, with seals, goats, and skiff access.  
DAY 3: Frederick Sound. Search for feeding humpback whales in rich glacial waters. Cruise past lighthouses and islands, with optional hiking, kayaking, or skiff exploration.  
DAY 4: Thomas Bay & Wrangell Narrows. Explore remote backcountry fjords by kayak or skiff before navigating the illuminated Wrangell Narrows. Optional hike or paddling.  
DAY 5: Blashke Islands. Enjoy kayaking, hiking, snorkelling, skiff tours, and bushwhacking across remote islands, with frequent whale and wildlife sightings.  
DAY 6: Yes Bay & Misty Fjords National Monument. Discover rainforest, fjords, and remote waterways teeming with bears, eagles, and marine life. Hike Tongass National Forest.  
DAY 7: Walker Cove & Misty Fjords. Experience towering cliffs, glacier-carved valleys, and abundant wildlife.  
DAY 8: Ketchikan. Enjoy breakfast before disembarking.



# Northern Passages with Glacier Bay & Sitka

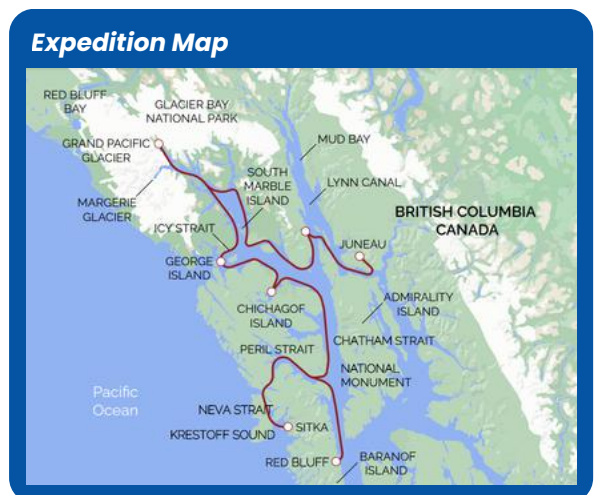


8 days | FROM US\$5,800\*pp + port charges of US\$300-500pp.  
Aboard Safari Endeavour | Departures Apr to Sep each year  
[More information here](#)

## Itinerary at a Glance

*NOTE: voyage available in reverse*

DAY 1: Juneau. Embark and set sail for a week of whale spotting and coastal mountain views.  
DAY 2: Captain's Choice. We're in the backcountry. The Tongass National Forest is a vast, infinitely discoverable place. Your Captain and Expedition Leader will decide where to go today.  
DAY 3: Glacier Bay National Park. Experience up-close views of Margerie or Johns Hopkins Glacier, wildlife sightings including puffins and sea lions, and exploration at South Marble Island.  
DAY 4: Icy Strait. Encounter marine life, from whales to sea lions, and explore old growth forests and kelp-threaded channels.  
DAY 5: Chichagof Island. Delve into fjords and meadows, observing coastal brown bears and seasonal natural wonders, guided by knowledgeable experts.  
DAY 6: Baranof Island / Peril Strait. Navigate glacial fjords, spotting whales and exploring muskegs, before venturing into Peril Strait's rich marine history and wildlife habitats.  
DAY 7: Krestof & Nakwasina Sounds. Explore remote islands and coves, kayak or hike along windswept shorelines.  
DAY 8: Sitka. Disembark and conclude your journey in Sitka.



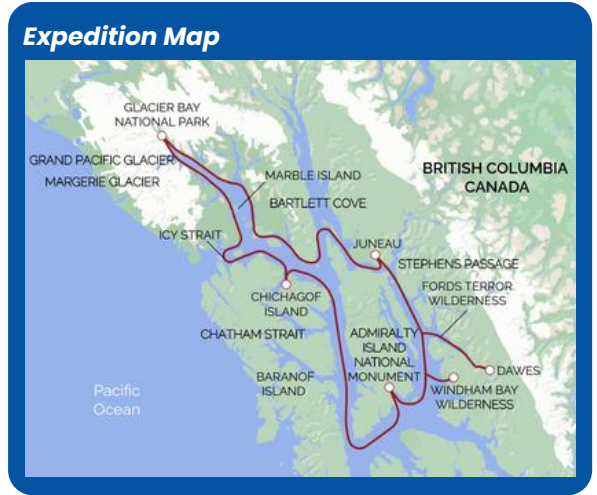
# Alaska's Glacier Wilderness & Glacier Bay



8 days | FROM US\$8,800\*pp + port charges of US\$300-500pp.  
Aboard [Safari Quest](#) | Departures May to Sep each year  
[More information here](#)

## Itinerary at a Glance

DAY 1: Juneau. Embark before setting sail west toward Icy Strait.  
DAY 2: Icy Strait. Explore remote bays and observe sea lions and marine life.  
DAY 3: Glacier Bay National Park. Spot puffins and sea lions at South Marble Island, witnessing glacier calving, and potentially encountering bears and mountain goats along the shoreline.  
DAY 4: Admiralty Island National Monument. Kayak and explore bays and islets, known as the 'Fortress of the Bear', with opportunities to observe Alaska brown bears and bald eagles.  
DAY 5: Frederick Sound. Enjoy sightings of humpback whales and other marine life, cruise past landmarks like Five Fingers Lighthouse and The Brothers Islands.  
DAY 6: Windham Bay & Stephens Passage. Encounter humpback whales and orcas, and choose from kayaking, paddleboarding, or hiking in the scenic Tongass National Forest.  
DAY 7: Endicott Arm / Dawes Glacier. Explore Endicott Arm, marveling at harbor seals on icebergs and potentially venturing into Fords Terror, before witnessing the stunning Dawes Glacier.  
DAY 8: Juneau. Farewell crew and friends before disembarking.



# Alaska's Inside Passage

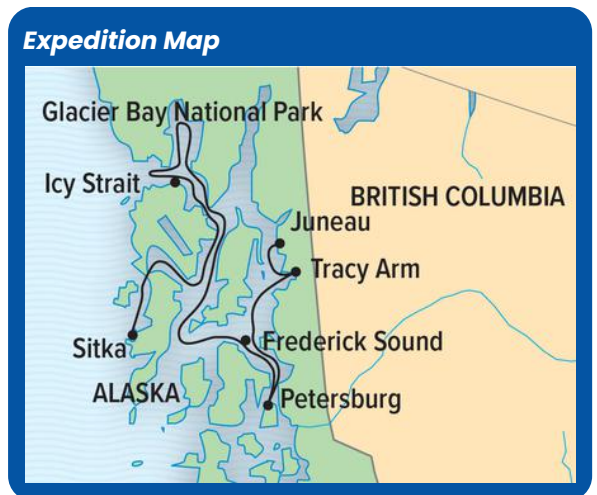


8 days | FROM AU\$9,725\*pp  
Aboard [National Geographic Quest](#) & [Venture](#) | Departures May to Sep each year  
[More information here](#)

## Itinerary at a Glance

*NOTE: voyage available in reverse*

DAY 1: Juneau. Embark and settle into your cabin before dinner.  
DAY 2: Tracy Arm-Fords Terror Wilderness. Pass Sawyer Glacier or Dawes Glacier, with opportunities for wildlife sightings including harbor seals, porpoises, and Arctic terns.  
DAY 3: Petersburg. Search for humpback whales, exploring the unique Southeast Alaskan ecosystem. Enjoy a Dungeness crab feast in the evening.  
DAY 4: Frederick Sound & Chatham Strait. Observe orcas and humpback whales while exploring bays and inlets, with opportunities for forest walks and kayaking in still waters.  
DAY 5: Icy Strait and the Inian Islands. Cruise among the Inian Islands, hike nearby islands, kayak, and listen to whale communications using the ship's hydrophone.  
DAY 6: Glacier Bay National Park. Witness tidewater glaciers calving into the sea and observe wildlife such as mountain goats, harbor seals, and brown bears.  
DAY 7: Southeast Alaska's Islands, Bays and Fjords. Explore isolated beaches, tide pools, and forest trails.  
DAY 8: Sitka. Disembark in Sitka.



# Alaska's Inside Passage + Hubbard Glacier



8 days | FROM AU\$9,725\*pp  
Aboard Greg Mortimer | Departures May to Sep 2027  
[More information here](#)

## Itinerary at a Glance

DAY 1: Vancouver, Canada. Embark your ship, meet crew over cocktails, begin expedition with welcome dinner onboard.

DAY 2: British Columbia's Inside Passage. Cruise scenic Inside Passage; spot whales, bears, dolphins; enjoy expert talks or relax onboard.

DAY 3: Misty Fjords National Monument. Explore Misty Fjords' towering cliffs, waterfalls, and misty peaks by Zodiac or kayak excursion.

DAY 4: Wrangell Narrows. Navigate narrow channels, kayak rainforest shores, follow bear trails; evening whale watching in Frederick Sound.

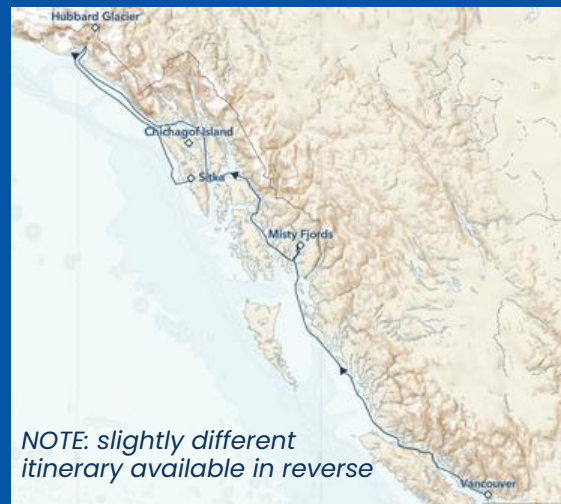
DAY 5: Southeast Alaska's Islands, Bays and Fjords. Flexible exploration of bays and forests; kayak, hike, track wildlife, discover rich intertidal ecosystems.

DAY 6: Hubbard Glacier. Admire vast icefront, mountain views, possible Zodiac exploration near glacier face.

DAY 7: Chichagof Island. Explore bear-rich Chichagof Island; kayak, hike rainforest, watch wildlife along rugged coastal waters.

DAY 8: Sitka. Disembark in Sitka.

## Expedition Map



NOTE: slightly different itinerary available in reverse



# Wild, Woolly & Wow with Glacier Bay



8 days | FROM US\$5,500\*pp + port charges of US\$300-500pp.  
Aboard Wilderness Legacy | Departures Apr to Aug each year  
[More information here](#)

## Itinerary at a Glance

DAY 1: Juneau. Explore Juneau before embarkation. Enjoy a welcome cocktail and meet the crew before the adventure begins.

DAY 2: Hobart Bay. Kayak or hike in Hobart Bay. Afternoon skiff rides offer glacier views and wildlife spotting.

DAY 3: LeConte Glacier Fjord. Witness the stunning LeConte Glacier up close. Explore by kayak, boat, or paddleboard. Beach walks among icebergs.

DAY 4: Thomas Bay. Adventure options include hiking, kayaking, and exploring glacial lakes. Evening skiff tours provide a unique wildlife experience.

DAY 5: Bay of Pillars. Explore Bay of Pillars and its marine life. Kayak, skiff tours, or cold-water snorkel to observe whales and sea creatures.

DAY 6: Chichagof Island. Search for Coastal Brown Bears along Chichagof Island. Enjoy hikes, kayaking, and skiff rides for optimal wildlife viewing.

DAY 7: Glacier Bay National Park. Discover Glacier Bay's hidden spots. Enjoy kayaking, paddleboarding, skiff excursions, and hikes. In the evening enjoy a Captain's Dinner and slideshow.

DAY 8: Juneau. Disembark for your onward journey.

## Expedition Map



Adult-only or family departures available on selected dates.

# Glacier Bay, Inside Passage & San Juan



13 days | FROM US\$5,800\*pp + port charges of US\$300-500pp.  
Aboard Safari Endeavour/Explorer/Quest or Wilderness Legacy  
Departures Apr/May/Sep each year  
[More information here](#)

## Itinerary at a Glance

NOTE: voyage available in reverse

DAY 1: Seattle. Board your ship, and settle in.  
DAY 2: Olympic National Park. Hike in Olympic National Park, enjoying rainforest and panoramic views.  
DAY 3: Canada's Inside Passage. Cruise through intricate waterways, watching for black bears and dolphins.  
DAY 4: Inside Passage Continues. Explore twisting passages, spotting eagles, seals, and forested fjords.  
DAY 5: Inside Passage Continues. Sail the northern Inside Passage, crossing into Alaska. Wildlife spotting continues.  
DAY 6: Misty Fjords National Monument. Kayak or skiff in Misty Fjords, exploring glacial valleys and waterfalls.  
DAY 7: Ketchikan. Tour Ketchikan with local legend Joe Williams, exploring Tlingit culture.  
DAY 8: Wrangell Narrows & Thomas Bay. Navigate 'Christmas Tree Lane' and explore Thomas Bay's glacial landscapes.  
DAY 9: Chichagof Island. Kayak and hike, searching for sea otters and bears in Tongass.  
DAY 10: Icy Strait. Spot humpbacks, sea lions, and vibrant marine life. Enjoy evening solitude.

## Expedition Map



DAY 11: Glacier Bay National Park. Hike, kayak, and explore rarely visited areas, observing wildlife. Evening cruise.  
DAY 12: Glacier Bay National Park continues. Experience glaciers, wildlife spotting, and serene fjords.  
DAY 13: Juneau. Disembark and explore Juneau before transfer to the airport or hotel.

# Remarkable Journey to Alaska & BC



15 days | FROM AU\$17,512\*pp  
Aboard National Geographic SeaBird & SeaLion | Departures Apr to Sep each year  
[More information here](#)

## Itinerary at a Glance

NOTE: voyage available in reverse

DAY 1: Sitka. Embark and meet the crew before dinner.  
DAYS 2-3: Glacier Bay National Park / Inian Islands / Chichagof Island. Spend a full day exploring Glacier Bay National Park, wildlife activities at Inian Islands, and cruising through Icy Strait with whale communication listening.  
DAYS 4-6: Alaska's Inside Passage. Discover Misty Fjords National Monument, Tongass National Forest, Petersburg village, and Tracy Arm or Endicott Arm fjords, with glacier views and wildlife sightings.  
DAYS 7-10: Haida Gwaii. Explore islands, including cultural sites and wildlife encounters.  
DAYS 11-12: Inside Passage Of British Columbia. Sail along British Columbia's rugged coastline, spotting wildlife and exploring bays and inlets.  
DAY 13: Johnstone Strait & Alert Bay, British Columbia. Visit First Nations village sites, cultural centres, and sail through Johnstone Strait for marine wildlife sightings.  
DAY 14: Gulf Islands, British Columbia. Cruise through the lush Gulf Islands, offering rich opportunities for nature observation.  
DAY 15: Vancouver. Disembark for your onward journey.

## Expedition Map



# Alaska's Inside Passage from Vancouver



13 days | FROM AU\$11,211pp\*

Aboard Roald Amundsen | Departures May to Jul each year

[More information here](#)

## Itinerary at a Glance

NOTE: voyage available in reverse

DAY 1: Anchorage to Whittier. Scenic transfer Anchorage to Whittier; embark expedition ship and begin Alaskan adventure.

DAY 2: Prince William Sound Glaciers. Explore tidewater glaciers by boat or kayak; spot whales, otters, seals and eagles.

DAY 3: Icy Bay. Admire Mt St Elias, search for whales and wildlife.

DAY 4: Icy Strait. Explore rugged islands, possible landings, whale sightings near Point Adolphus.

DAY 5: Haines. Discover Lingít culture, traditional crafts, galleries, and opportunities for hiking and wildlife spotting.

DAY 6: Southeast Alaska Exploration. Explore forested shores, spot bears, moose, deer and abundant wildlife.

DAY 7: Tracy Arm or Endicott Arm. Cruise dramatic fjords; see calving glaciers, icebergs & potential whale and bear sightings.

DAY 8: Chatham Strait / Frederick Sound. Kayak or cruise, spotting whales, bears and eagles in pristine wilderness.

DAY 9: Klawock. Explore totem park, discover Lingít heritage on scenic Prince of Wales Island.

DAY 10: Misty Fjords. Explore wilderness; kayak or boat among waterfalls, forests, spotting bears, seals and whales.

## Expedition Map



DAY 11: Inside Passage. Discover remote channels, dramatic fjords, and search for whales and rare Kermode bears.

DAY 12: Alert Bay. Meet Kwakwaka'wakw people, explore cultural centre, spot whales.

DAY 13: Vancouver. Disembark.

# Inside Passage & Aleutian Islands



19 days | FROM AU\$19,992pp\*

Aboard Roald Amundsen or Fridtjof Nansen | Departures Jul to Sep each year

[More information here](#)

## Itinerary at a Glance

NOTE: voyage available in reverse

DAYS 1-2: Vancouver. Explore the city before embarkation.

DAY 3: Inside Passage. Witness scenic fjords and unique wildlife.

DAY 4: Misty Fjords. Enjoy pristine wilderness, optional kayak excursion, observing diverse wildlife including bears and orcas.

DAY 5: Wrangell. See ancient rock carvings at Petroglyph Beach.

DAY 6: Sitka. Visit historical sites and enjoy scenic walks.

DAY 7: Icy Bay. Observe calving glaciers, optional kayaking.

DAY 8: Gulf of Alaska. Day at sea - enjoy onboard activities.

DAY 9: Kodiak. Visit museums, WWII park, and a wildlife refuge.

DAY 10: Katmai. Spot grizzlies in Katmai National Park, explore bays, observe diverse wildlife including whales and sea otters.

DAY 11: Alaska Peninsula. Rugged coastline, spot bears and eagles, learn about geological evolution, enjoy secluded bays.

DAY 12: Unga. Explore abandoned Unga Village, surrounded by wildflowers and history, weather permitting.

DAY 13: Dutch Harbor. Visit WWII Museum, explore indigenous culture, spot diverse wildlife, use hop-on, hop-off shuttle.

DAY 14: Bering Sea. Day at sea - enjoy onboard activities.

DAY 15: St Paul. Visit traditional dwellings, spot migrating birds and northern fur seals, learn local history.

## Expedition Map



DAY 16: St Matthew. Observe rare bird species and listen for singing voles.

DAY 17: Bering Sea. Day at sea.

DAY 18: Nome. Explore Gold Rush history, see relics of past expeditions.

DAY 19: Seattle. End your Alaskan journey in this vibrant city.

# Alaska's Inside Passage – Wild Wonders



15 days | FROM € 10,590pp\*

Aboard *Hanseatic Inspiration/Nature/Spirit* | Departures Jul each year

[More information here](#)

## Itinerary at a Glance

NOTE: voyage available in reverse

DAY 1: Seward. Arrive Seward, embark your expedition ship.

DAY 2: Katmai National Park. Cruise Katmai; search for coastal bears, wildlife from open decks.

DAY 3: Homer. Explore Homer; optional bear-viewing flights, glacier hikes, scenic boat excursions.

DAY 4: Kodiak. Visit Kodiak; explore Russian heritage, coastal forests, possible whale sightings.

DAY 5: At Sea. Enjoy onboard comforts and expedition insights.

DAY 6: Tsaaj Fjord & Hubbard Glacier. Cruise fjord and Hubbard Glacier; dramatic scenery, ice navigation, towering peaks.

DAY 7: Chichagof Island. Visit Elfin Cove; explore remote community, spot whales in Icy Strait.

DAY 8: Tracy Arm & Endicott Arm. Cruise fjords; towering cliffs, glaciers, wildlife including whales and sea lions.

DAY 9: Kupreanof Island. Discover Tlingit heritage; visit totem sites with expert-guided cultural insights.

DAY 10: Petersburg. Explore Petersburg; Norwegian charm, glacier views via boat or scenic flight.

DAY 11: Wrangell. Enjoy river adventures, hiking or kayaking.

## Expedition Map



DAY 12: Ketchikan. Experience native culture, Misty Fjords and wilderness adventures.

DAY 13–14: Inside Passage. Cruise Inside Passage; forested islands, wildlife sightings, spectacular coastal scenery.

DAY 15: Vancouver. Disembark

# Inside Passage: Captive Coastline



16 days | FROM US\$10,200pp\*

Aboard *American Cruise Line Ships* | Departures May & Sep each year

[More information here](#)

## Itinerary at a Glance

NOTE: voyage available in reverse

DAYS 1 & 2: Juneau. Explore Juneau's streets, museums, and Mount Roberts Tramway vistas. Board your ship for a welcome reception.

DAY 3: Haines. Enjoy bear spotting, kayaking, eagle watching.

DAY 4: Skagway. Gold Rush history, White Pass Railroad & charming street.

DAY 5: Glacier Bay. Glaciers, seals, ice calving & snow-capped mountains.

DAY 6: Tracy Arm Fjord. Fjord exploration with waterfalls and glaciers.

DAY 7: Petersburg. Flightseeing, hiking, fishing, and explore charming Norwegian-influenced town.

DAY 8: Wrangell. Observe bears, eagles, and salmon; explore Stikine River.

DAY 9: Ketchikan. Totem parks, Misty Fjords, wildlife & cultural experiences.

DAY 10: Inside Passage & Frederick Sound. Scenic cruising with wildlife spotting and onboard activities.

DAY 11: Queen Charlotte Strait. Wildlife spotting & coastal forest scenery.

DAY 12: Strait of Georgia. Cruise islands with orca, seals, sea lions, eagles.

DAY 13: Friday Harbor. Historic town exploration, museums, Coast Salish carvings, and local culture.

DAY 14: Anacortes. Waterfront town, whale watching, forest trails, Mount Erie, and downtown shopping.

DAY 15: Cruising/Seattle. Enjoy sun deck and onboard relaxation.

DAY 16: Seattle. Disembark and explore city highlights.

## Expedition Map



# Alaska Adventure Cruise



10 days | FROM US\$10,150pp\*  
Aboard [Swell](#) | Departures Jul each year  
[More information here](#)

## Itinerary at a Glance

**DAY 1: DAY 1:** Petersburg. Board, then cruise Frederick Sound. Experience Alaskan coastal rainforest, wildlife and wilderness.  
**DAY 2:** Frederick Sound. Cruise spectacular fjord to tidewater glacier, icebergs, wildlife viewing, zodiac, kayak, guided walks exploring dramatic ice world experiences unforgettable scenery.  
**DAY 3:** Frederick Sound. Humpback whales Frederick Sound, Five Fingers Lighthouse, Windfall Harbour, estuary exploration and potential brown bear sightings.  
**DAY 4:** Admiralty Island. Guided brown bear viewing Admiralty Island, Pack Creek rainforest walk, Swell guests exclusive access, salmon creek wildlife immersion experience highlights.  
**DAY 5:** Baranof Island. Frederick Sound marine mammal cruising, islands exploration, Baranof inlet, meadow habitat favoured brown bears, wildlife viewing.  
**DAY 6:** Baranof Island. Cruise Warm Springs Bay, rainforest bog walk, natural hot springs, Baranof waterfall coast, Peril Strait transit, Kruzof Island approach exploration.  
**DAY 7:** Kruzof Island. Hike through diverse ecotypes, reach spectacular west coast beach, cruise coastline.



**DAY 8: St. Lazaria.** Zodiac exploration St. Lazaria seabird island, Mt Edgecumbe vistas, hot springs, intertidal life, volcanic coastal scenery marine biodiversity.  
**DAYS 9 & 10: Sitka.** Cruise Sitka. Enjoy a guided land tour, explore historic town, farewell dinner, overnight lodge stay, cultural immersion experience memorable makes for a conclusion.

# Southeast Alaska Cruise



11 days | FROM US\$10,785\*pp  
Aboard [Island Roamer](#) | Departures Jul to Aug each year  
[More information here](#)

## Itinerary at a Glance

**DAY 1:** Prince Rupert. Embark, passing through the topography of Chatham Sound and its myriad islands. The entrance to Portland Canal marks the border between Alaska and British Columbia. Sailing past Misty Fjords National Monument.  
**DAYS 2-4:** Ketchikan, north. Continue north among the narrow passages of Etolin and Wrangell Islands to Anan Bay. Anan Creek has the largest run of pink salmon in Southeast Alaska, and this accumulation of food attracts bears and eagles in great numbers.  
Disembark for a day tour on a jet boat, escorted by a local guide, up to Le Conte Glacier – the southernmost tidewater glacier in Alaska. It is located beside the Stikine River estuary – an important stop for millions of migratory birds.  
**DAYS 2-4: Frederick Sound & Admiralty Island.** Frederick Sound, Chatham Strait and Stephens Passage are the core feeding area for humpback whales in Southeast Alaska. Observe these 15m-long creatures whenever the opportunity arises and hope to witness spectacular behaviours like breaches, pectoral slaps, and bubble-net feeding. Keep an eye out for sea otters.



Admiralty Island National Monument has the highest concentration of brown (grizzly) bears in North America. Pack Creek on Admiralty Island has been a protected area for brown bears for the last 40 years and offers amazing viewing opportunities in the estuary of their estimated resident 1,500 bears.

**DAY 11: Petersburg.** Disembark.

# Vancouver to Seward in Luxury



8 days | FROM AU\$6,600pp\*  
Aboard *Crystal Serenity* | Departures May to Jul each year  
[More information here](#)

## Itinerary at a Glance

NOTE: voyage available in reverse

**DAY 1: Vancouver.** Explore vibrant neighborhoods, fresh seafood, and vast Stanley Park—North America's largest urban green space blending nature, culture, and city energy.

**DAY 2: Seymour Narrows.** Navigate a narrow, fast-flowing channel in Discovery Passage, famed for powerful tidal currents and dramatic coastal scenery shaped by nature.

**DAY 3: Ketchikan.** Discover Alaska's salmon capital—kayak, fish, or fly to remote lakes; explore totem poles, heritage sites, boardwalks, and scenic waterfront views.

**DAY 4: Juneau.** Alaska's capital blends Gold Rush history, vibrant culture, and glacier adventures—accessible only by air or sea, surrounded by dramatic wilderness.

**DAY 5: Skagway.** Step into Gold Rush history in this once-booming frontier town, where population surged rapidly during Alaska's late-1800s gold fever era.

**DAY 6: Sitka.** Explore Alaska's former Russian capital, featuring historic parks, onion-domed cathedral, lush island landscapes, and a rare, culturally rich cruising destination.



**DAY 7: Hubbard Glacier.** Cruise past immense ice formations in pristine wilderness, with chances to spot humpback whales amid dramatic scenery in Alaska's southcentral region.

**DAY 8: Seward.** Discover gateway to Kenai Fjords—glaciers, wildlife, marine life and Indigenous heritage.

# Vancouver return in Luxury



15 days | FROM AU\$14,600\*pp  
Aboard *Silver Whisper* | Departures Jun to Aug each year  
[More information here](#)

## Itinerary at a Glance

**DAY 1: Vancouver.** Explore vibrant city life before embarkation.

**DAY 2: Inside Passage.** Cruise past glaciers, islands, and fjords.

**DAY 3: Ketchikan.** Discover salmon capital with wildlife, Misty Fjords, rainforest sanctuary and totem heritage.

**DAY 4: Tracy Arm + Juneau.** Cruise glacier-carved fjords before exploring Alaska's capital, with wildlife and adventure.

**DAY 5: Skagway.** Step into Gold Rush history, ride scenic railways, hike historic trails, and experience dramatic scenery.

**DAY 6: Icy Bay.** Witness raw wilderness with floating ice, glaciers, and wildlife including seals, seabirds, and occasional bears.

**DAY 7: Valdez.** Explore Prince William Sound's glaciers, waterfalls, and wildlife with options for kayaking, hiking, fishing.

**DAY 8: Seward.** Discover Kenai Fjords' glaciers and wildlife, kayak among icebergs. Experience Indigenous culture.

**DAY 9: Hubbard Glacier.** Cruise past North America's largest tidewater glacier, witnessing dramatic calving.

**DAY 10: Juneau.** Return to glacier-rich capital for more wildlife encounters, scenic flights, and immersive outdoor adventures.

**DAY 11: Haines.** Experience rich culture, wildlife viewing, and access to wilderness landscapes known for eagles and bears.



**DAY 12: Sitka.** Discover Russian heritage, Tlingit culture, totem poles, wildlife-rich waters, and dramatic volcanic landscapes.

**DAY 13: Metlakatla.** Visit Alaska's only Native reserve, learning Tsimshian culture, traditions, and history.

**DAY 14: Inside Passage.** Cruise fjords and islands, spot whales, seals, and Alaska's dramatic coastal wilderness.

**DAY 15: Vancouver.** Disembark.

# Northwest Passage: Greenland to Alaska



23 days | FROM AU\$94,776pp\*  
Aboard NG Resolution | Departures Jul each year  
[More information here](#)

## Itinerary at a Glance

NOTE: voyage available in reverse

DAY 1: Reykjavík, Iceland. Enjoy a morning excursion, followed by lunch. Check into your centrally located hotel and explore the capital city at your leisure.

DAY 2: Reykjavík. Fly from Reykjavík to Nuuk, Greenland's capital. Settle into your cabin and sail out into the Davis Strait.

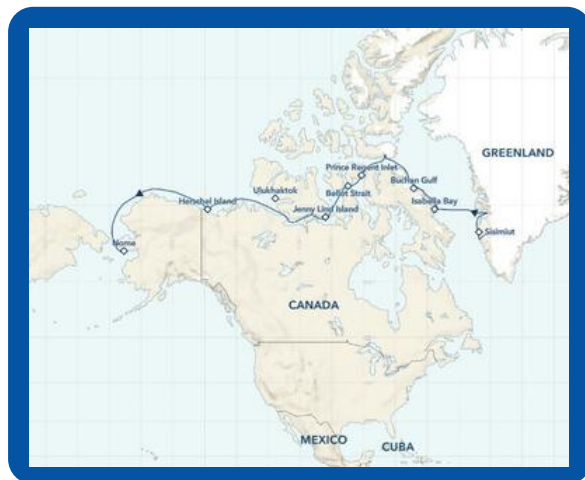
DAY 3: Greenland's West Coast and Sisimiut. Explore Greenland's rugged western coast, spotting humpback and minke whales. Visit Sisimiut, a former whaling port, and explore its historic sites.

DAY 4: Disko Bay / Ilulissat. Sail into Disko Bay to explore the Ilulissat Icefjord, witnessing the Sermeq Kujalleq glacier calving icebergs. Visit the historic fishing village of Sermermiut.

DAYS 5-7: East Baffin Island, Nunavut, Canada. Explore Pond Inlet and Lancaster Sound, home to diverse wildlife and Inuit culture. Visit Devon Island to learn about the Thule people.

DAYS 8-17: Northwest Passage. Navigate the Northwest Passage, exploring stunning landscapes and wildlife-rich areas. Learn about Inuit culture and early explorers.

DAY 18: At Sea. Enjoy onboard amenities.



DAY 19: Herschel Island, Yukon Territory.

Explore historic dwellings and wildlife, including bears and musk oxen.

DAYS 20-22: At Sea. Continue westward along Alaska's coast.

DAY 23: Nome, Alaska. Arrive in Nome, Alaska, disembark, and explore the town before transferring to Anchorage for flights.

# Northwest Passage: Alaska to Greenland



30 days | FROM € 22,990\*pp  
Aboard Hanseatic Inspiration/Nature/Spirit | Departures Aug each year  
[More information here](#)

## Itinerary at a Glance

DAY 1: Seward, Alaska. Embark and depart Seward this evening.

DAY 2: At Sea. A day to relax and attend expert briefings.

DAYS 3-5: Alaska Peninsula & Aleutian Islands. Cruise past dramatic coastlines and rich wildlife. Bird cliffs at Kak Island come alive with puffins, guillemots and kittiwakes. In Chignik, connect with the local Alutiq community and gain insight into life shaped by land and sea. The Aleutian chain reveals vast, remote beauty, beaches, wildlife and Russian heritage.

DAY 6: Saint Paul Island, Pribilof Islands. Look for northern fur seals and seabirds. on zodiac excursions and coastal hikes.

DAY 7: At Sea – Bering Sea. A chance to recharge at sea.

DAY 8: Nome. Step into gold rush history. Discover the town's connection to the legendary Iditarod sled dog race.

DAYS 9-11: At Sea – Chukchi & Beaufort Seas. Relax at sea.

DAYS 12-25: Northwest Passage. This legendary route offers raw Arctic wilderness shaped by ice and history. Explore Herschel Island's whaling past, witness the eerie Smoking Hills, and search for wildlife including musk oxen, Arctic foxes and polar bears. Navigate storied waterways like Victoria Strait and Peel Sound, with opportunities for landings and Zodiac cruises.



Historic Beechey Island and remote Devon Island add powerful human context to this remarkable passage.

DAY 26: At Sea. Sail towards Greenland.

DAYS 27-29: West Coast Greenland.

Discover a landscape of ice and culture. In Uummannaq, colourful houses sit beneath a heart-shaped mountain. Ilulissat's UNESCO-listed ice fjord delivers unforgettable glacier views, while Disko Bay surrounds you with drifting ice sculptures. Sisimiut offers a glimpse into ancient cultures and Arctic life.

DAY 30: Kangerlussuaq, Greenland. Arrive in Kangerlussuaq to disembark.



WANT TO EXTEND YOUR JOURNEY?

## ALASKA LAND OPTIONS

Extend the adventure beyond your cruise with a range of unforgettable land experiences that showcase even more of Alaska and Western Canada. From iconic national parks and scenic rail journeys to flexible road trips and comfortable lodge stays, these options allow you to tailor a journey that goes deeper into the wilderness and culture of the North—just ask us how.

### DENALI NATIONAL PARK

Located approximately 400 kilometres north of Anchorage, this world-famous park is a standout pre- or post-cruise extension, offering vast tundra landscapes, wildlife viewing, and the chance to experience North America's highest peak.

### ROCKY MOUNTAINEER

Experience the breathtaking beauty of the Canadian Rockies in unparalleled luxury and comfort aboard the Rocky Mountaineer, connecting Alaska itineraries seamlessly with Western Canada.

### SELF DRIVE

For independent travellers, Alaska's dramatic road networks open up incredible scenic routes, including journeys through Denali National Park and Kenai Fjords National Park, combining flexibility with world-class wilderness scenery.

### HOTELS AND LODGES

From Seward to Vancouver, a curated range of hotels and wilderness lodges provides seamless pre- and post-cruise stays, ensuring comfort and convenience at every stage of the journey.



# Where will your *Alaskan* adventure take you?



**[www.wildearth-travel.com](http://www.wildearth-travel.com)**  
**[info@wildearth-travel.com](mailto:info@wildearth-travel.com)**  
**NZ 0800 945 3327**  
**AU 1800 107 715**

\*Prices quoted are per person, twin share and may incur additional fees such as port taxes and/or transfers. All information contained within this publication is accurate and in effect at the time of publication (April 2026). Wild Earth Travel reserves the right to correct any errors and/or omissions in the event of such error and/or omission. Cover image Misty Fjords National Park, Hapag-Lloyd. Images courtesy of UnCruise; Lindblad Expeditions National Geographic; M Baynes, Aurora Expeditions. Back cover map courtesy of travelaska.com.