

Saturday - November 1, 2025 - 2 PM - Alamo Plaza, San Antonio, Texas

(Directly out the Menger Hotel main lobby doors)



at The Alamo
INVITATIONAL SALE



Sale Managed by:

STRATEGY CATTLE, LLC

Trey Scherer (979) 203-1656

Auctioneer: Anthony Mihalski (210) 415-0888

Accommodations:

Menger Hotel
204 Alamo Plaza
San Antonio, TX 78205
(210) 223-4361

Sale Broadcast Live Online:

PremierLivestockAuctions.com





V3 ALAMO BELLE 6/3

DONATION LOT

V3 - TREY SCHERER

BRED

Breeder: **Trey Scherer** • BBU#: **C1178108**
 DOB: **1/24/23** Sex: **Female** Color: **Red** ID: **6/3 LE**
 Service Sire: **CF Modelo C1108837**

CF Riprap 676/0
 VFF AB MR 14137
 H T Chapman 127/2
 Collier Farms CF 410/0
Trey Scherer V3 6/4
 Trey Scherer V3 6/0

****WPR's The Total Package 7595**
 AB Valley Pride AB12111
 Collier Farms 489/9
 Hugh T Chapman 127/5
****Logan 62M27**
 Perfect Nirvana 005
 Collier Farms 386/1
 Trey Scherer 1539



In commemoration of the 190th anniversary of the Alamo battle and the 2025 Beefmaster Breeders United convention, Trey and Mona Scherer have donated this beautiful female from their herd benefiting the Remember the Alamo Trust. This heavy bred CF Riprap daughter should be a pair by sale time with a classy CF Modelo calf at side. Here's your opportunity to be part of benefiting the legacy of the Alamo and acquiring an exquisite breeding piece for your herd.

																INDIVIDUAL PERFORMANCE RECORDS							
EXPECTED PROGENY DIFFERENCES										ULTRASOUND EPDs				INDEXES			BW	WW	YW	REA	%IMF	RIB FT	RUMP FT
	CED	BW	WW	YW	MILK	MCE	MWWT	SC	STAY	AFC	REA	% IMF	RIBFAT	ST	\$M	RATIO	*		*				
EPD	5.05	-0.2	24	34	11	3.12	22.91	0.42	1.19	-0.89	-0.07	0.02	-0.030	72.10	18.18	CONTEMP	1	1	1				
ACC	0.29	0.40	0.42	0.41	0.28	0.18	0.00	0.37	0.23	0.18	0.37	0.40	0.36			ADJ TRAIT	65	579	989				



NG RED QUEEN M981 ET

NEXTGEN CATTLE COMPANY

OPEN • POLLED

Breeder: **NextGen Cattle Company** • BBU#: **C1201020**
 DOB: **9/12/24** Sex: **Female** Color: **Red** ID: **M981 LE**

CF Unico 219/1
 WB Solution 67/6
 CF Bebe 795/7
 McAlester 4521

NG Red Queen 1840F7
 CHRK Ruthie 1840X

CF Dream Catcher 914
****Logan's Bengal Baby 134/0**
 CF Riptide 875/3
 Sugar Shana 645-6
 J&K Cattle 1001
 Kent Mindemann 95
***Black Bayou 1071/3**
****CHRK Miss Reba 1194/5**



NextGen Cattle continues to masterfully blend some of the most elite genetics in their program with the most legendary lines in the industry. This powerful yet feminine homozygous polled Unico daughter delivers the muscling and performance features which have become synonymous with the Red Queen cow family. This heifer is the confluence of the maternal genetics of Sugar Ann, Oasis, Logan's Bengal Baby, Bebe, and Miss Reba. When considering her extraordinary EPD profile with \$T and \$M indexes in the top 2%, this donor prospect could be the one you've been waiting on.

																INDIVIDUAL PERFORMANCE RECORDS							
EXPECTED PROGENY DIFFERENCES										ULTRASOUND EPDs				INDEXES			BW	WW	YW	REA	%IMF	RIB FT	RUMP FT
	CED	BW	WW	YW	MILK	MCE	MWWT	SC	STAY	AFC	REA	% IMF	RIBFAT	ST	\$M	RATIO	96	111					
EPD	1.95	1.8	53	67	8	3.28	35.00	1.49	0.08	-0.73	0.34	-0.05	-0.020	128.75	35.77	CONTEMP	16	16					
ACC	0.15	0.26	0.25	0.27	0.13	0.10	0.00	0.19	0.11	0.10	0.27	0.28	0.27			ADJ TRAIT	83	670					

Lot 3 (A&B) :
OPEN PICK OF
FORMULA ONE
EMBRYO
FLUSHMATES

Collier Farms



LOT 3A — ID: 212/4 LE



LOT 3B — ID: 226/4 LE

Continuing the legacy of the great Solution and Riptide sire lines from Collier Farms comes Formula One. Formula One blends the best of some of the most proven super sires in the breed with The Picture Cow maternal line. This pick of embryo flushmates brings in the Koala Bear donor for even more consistency and predictability. Koala Bear is the dam of stud bulls like CF Kraken and flawless females like the 2021 STBBA Houston Futurity champion.

A quick review of the EPD and actual performance of these stellar young donor prospects shows impressive calving ease and birth weight combined with high growth leading to top 10% Maternal indexes. Polled genetics are also present here coming from Koala Bear. The B lot is slick polled and the A heifer had scurs removed for an additional bonus feature. Collier Farms is famous for selling only one in a pick, so don't sit waiting on the second to sell, she's probably returning to the ranch.

3A&B

CF Formula One 619 x JT Koala Bear JT 59

COLLIER FARMS

OPEN

LOT 3A:

Breeder: **Mike & Rhonda Collier** • BBU#: **P1198536**
DOB: **10/2/24** Sex: **Female** Color: **Red** ID: **212/4 LE**

LOT 3B:

Breeder: **Mike & Rhonda Collier** • BBU#: **P1198549**
DOB: **10/4/24** Sex: **Female** Color: **Red** ID: **226/4 LE**
POLLED

WB Solution 67/6

CF Formula One 619

CF Picture's Portrait 794/6

CF Sugar Bear 933

JT Koala Bear JT59

Clark Jones 8705

CF Dream Catcher 914

**Logan's Bengal Baby 134/0

CF Riptide 875/3

**The Picture Cow 463/3

**L2 Captain Sugar 12/02

**Oasis 655

CJ's Motown 412

**Wicked Witch 7/04

Lot 3A: 212/4 LE

																INDIVIDUAL PERFORMANCE RECORDS							
EXPECTED PROGENY DIFFERENCES										ULTRASOUND EPDs				INDEXES			BW	WW	YW	REA	%IMF	RIB FT	RUMP FT
	CED	BW	WW	YW	MILK	MCE	MWWT	SC	STAY	AFC	REA	% IMF	RIBFAT	ST	\$M	RATIO	109	111					
EPD	5.16	-0.6	38	45	7	2.41	26.06	0.81	-0.18	-0.92	-0.05	-0.01	-0.013	90.88	28.91	CONTEMP	9	6					
ACC	0.29	0.36	0.36	0.38	0.19	0.17	0.00	0.28	0.18	0.17	0.37	0.41	0.36			ADJ TRAIT	72	663					

Lot 3B: 226/4 LE

																INDIVIDUAL PERFORMANCE RECORDS							
EXPECTED PROGENY DIFFERENCES									ULTRASOUND EPDs				INDEXES				BW	WW	YW	REA	%IMF	RIB FT	RUMP FT
	CED	BW	WW	YW	MILK	MCE	MWWT	SC	STAY	AFC	REA	% IMF	RIBFAT	ST	SM	RATIO	102	104					
EPD	4.14	0.0	37	43	6	2.26	24.89	0.65	-0.34	-1.13	-0.13	0.00	-0.017	88.89	25.98	CONTEMP	9	6					
ACC	0.29	0.36	0.36	0.38	0.19	0.17	0.00	0.28	0.18	0.17	0.37	0.41	0.36			ADJ TRAIT	78	621					

Lot 4 (A&B) :
OPEN PICK OF
DAYBREAK
EMBRYO
FLUSHMATES

H-Bar
Ranch



LOT 4A — ID: 4119 LE



LOT 4B — ID: 4117 LE

At the 2023 BBU convention on the island, a new super sire took center stage and JT Daybreak was born. Since that time, records have been shattered and a new standard in premium genetics has been established for the breed. The anticipation to acquire these genetics has been great and the wait is now over. H-Bar Ranch is proud to present these two exceptional Daybreak daughters out of their leading donor Vision's Dream.

These slick polled darlings deliver everything Beefmaster breeders love about our cattle with the additional performance measures, EPD's, and POLLED horn status demanded by today's beef industry. Study the overall volume and softness in these two females while keeping the conformation and muscling in place. Imagine the various ways you could take a female like this and blend her with some of the most elite sires in the breed to create the next generation of super sires or exclusive donors.



JT Daybreak JT4921 x WB Vision's Dream 88/8

H-BAR RANCH

OPEN • POLLED

LOT 4A:

Breeder: **Greg Hendrix** • BBU#: **C1196385**

DOB: **10/3/24** Sex: **Female** Color: **Red** ID: **4119 LE**

LOT 4B:

Breeder: **Greg Hendrix** • BBU#: **C1196381**

DOB: **9/30/24** Sex: **Female** Color: **Red** ID: **4117 LE**

CJ's Game Day 28/16

JT Daybreak JT4921

CJ Heartbreak 12/17

CF Dream Catcher 914

WB Vision's Dream 88/8

**CF Dusty Vision 964/4

CJ's Justice J100

*CHRK Milky Way 1863X

CF Masterpiece 685

*CJ's Diamond Of Soul 509

**L2 Captain Sugar 12/02

**Oasis 655

**Vision 905 905/7

**Dusty Cotton 977/1

Lot 4A: 4119 LE

																INDIVIDUAL PERFORMANCE RECORDS							
EXPECTED PROGENY DIFFERENCES										ULTRASOUND EPDs				INDEXES			BW	WW	YW	REA	%IMF	RIB FT	RUMP FT
	CED	BW	WW	YW	MILK	MCE	MWWT	SC	STAY	AFC	REA	% IMF	RIBFAT	ST	\$M	RATIO	102	99					
EPD	1.76	1.4	34	44	9	2.98	26.01	0.46	-1.41	-0.72	0.01	0.12	-0.032	91.41	21.10	CONTEMP	11	11					
ACC	0.29	0.41	0.42	0.44	0.18	0.17	0.00	0.30	0.17	0.17	0.41	0.45	0.40			ADJ TRAIT	70	511					

Lot 4B: 4117 LE

																INDIVIDUAL PERFORMANCE RECORDS							
EXPECTED PROGENY DIFFERENCES									ULTRASOUND EPDs				INDEXES				BW	WW	YW	REA	%IMF	RIB FT	RUMP FT
	CED	BW	WW	YW	MILK	MCE	MWWT	SC	STAY	AFC	REA	% IMF	RIBFAT	ST	\$M	RATIO	99	108					
EPD	2.44	1.3	34	47	10	3.17	27.03	0.59	-1.76	-0.74	0.13	0.11	-0.031	95.35	21.12	CONTEMP	11	11					
ACC	0.29	0.41	0.42	0.44	0.18	0.17	0.00	0.30	0.17	0.17	0.41	0.45	0.40			ADJ TRAIT	72	558					

5

CB ROC 94/24

CB ROCKEFELLER RANCH

OPEN • POLLED

Breeder: **Travis Graybeal** • BBU#: **C1192549**DOB: **6/17/24** Sex: **Female** Color: **Dark Red** ID: **94/24 LE**

CJ's Revolution 1772
CF ROC Cowboy Casanova REV21
 Zipperer 4138

**Fusion 578/3

Collier Farms CF 719/0

cf Lady 8 892

CJ's Game Changer 1316
 CJ's Hope Diamond 5/13
 EMS Cavalier's Image 024
 Priola Prissy 62/09
 **Tabasco 3018K10
 **Phantom's Diamond 119/9
 CF Prime 8 140/5
 CF Vivid Oasis 713

With the most sincere excitement, CB Rockefeller ranch introduces the very first offering by their polled power sire Cowboy Casanova. When combined with some of the most notorious genetics in the breed like Fusion, Prime 8 and Vivid Oasis, Cowboy Casanova daughters like this centerfold quickly rise to the top of any offering. A quick study of her gorgeous lines, perfect dark red color, strong EPD's and great performance data show that this polled pasture princess is something special.



																INDIVIDUAL PERFORMANCE RECORDS							
EXPECTED PROGENY DIFFERENCES									ULTRASOUND EPDs					INDEXES			BW	WW	YW	REA	%IMF	RIB FT	RUMP FT
	CED	BW	WW	YW	MILK	MCE	MWWT	SC	STAY	AFC	REA	% IMF	RIBFAT	ST	\$M	RATIO	104	107	*	*	*	*	*
EPD	4.73	-0.2	36	43	9	2.77	26.50	0.76	-2.61	-1.09	-0.08	0.07	-0.031	88.37	27.21	CONTEMP	3						
ACC	0.14	0.39	0.36	0.29	0.14	0.03	0.00	0.18	0.05	0.03	0.23	0.22	0.20			ADJ TRAIT	67	649					

6

RHR 138

ROADHOUSE BEEFMASTERS

OPEN

Breeder: **Gary L. Delz** • BBU#: **C1186750**DOB: **5/30/24** Sex: **Female** Color: **Red** ID: **138LE**

**Fusion 578/3
Collier Farms CF 490/8
 Xcited Lady 07/09

CF Sergeant RJ 907/8

RHR American Woman 116

Red Selene 953

**Tabasco 3018K10
 **Phantom's Diamond 119/9
 **Xcite 497
 Lady Lu 118/06
 CF Riptide 875/3
 Collier CF 749/6
 CF Masterpiece 685
 CJ Twisted Sister 1602

When it comes to great looks combined with a proven pedigree, this doll of a female from RoadHouse Ranch puts it all together. Fusion and Xcited Lady deliver polled genetics with classy and milking consistency while American Woman adds the growth performance and power. This exciting individual has a perfect balance of EPD's, carcass scan, and conformation needed to advance any program.



																INDIVIDUAL PERFORMANCE RECORDS							
EXPECTED PROGENY DIFFERENCES										ULTRASOUND EPDs				INDEXES			BW	WW	YW	REA	%IMF	RIB FT	RUMP FT
	CED	BW	WW	YW	MILK	MCE	MWWT	SC	STAY	AFC	REA	% IMF	RIBFAT	ST	\$M	RATIO	*		*	83	73	89	83
EPD	5.04	-0.1	29	40	8	3.02	22.49	0.51	-1.82	-0.95	-0.23	0.07	-0.031	82.60	18.87	CONTEMP	1	1	1	6	6	6	5
ACC	0.29	0.37	0.36	0.36	0.14	0.17	0.00	0.30	0.17	0.17	0.33	0.38	0.32			ADJ TRAIT	75	560	774	8.10	2.180	0.18	0.290

7

FAB 1218 SWEET SUMMER

FLYING A BEEFMASTERS

OPEN

Breeder: **Flying A Beefmasters** • BBU#: **C1191680**DOB: **5/4/24** Sex: **Female** Color: **Red White Underline** ID: **524RE**

WB Solution 67/6
CF Unico 219/1
 CF Bebe 795/7

Lyssy 38/114

G4 Ranch G4 143

G4 Ranch G4 840

CF Dream Catcher 914
 **Logan's Bengal Baby 134/0
 CF Riptide 875/3
 Sugar Shana 645-6
 Lyssy's Tonto 26/96
 Lyssy 115/99
 G4 Ranch G4 609
 G4 Ranch G4 1120

Upon first glance, the overall rib dimension, volume, and muscling will be immediately evident in this stunning Unico daughter from Flying A Beefmasters. Combining Unico with G4 Ranch and Lyssy genetics proved to be a flying success with this outstanding individual. This unique female boasts a large REA/cwt and impressive EPD indexes in the Top 15% for \$T and Top 4% for \$M as an added bonus.



																INDIVIDUAL PERFORMANCE RECORDS							
EXPECTED PROGENY DIFFERENCES									ULTRASOUND EPDs				INDEXES				BW	WW	YW	REA	%IMF	RIB FT	RUMP FT
	CED	BW	WW	YW	MILK	MCE	MWWT	SC	STAY	AFC	REA	% IMF	RIBFAT	ST	\$M	RATIO	*		*	*	*	*	*
EPD	1.73	1.8	48	58	8	2.70	31.81	1.08	-1.96	-0.62	0.18	-0.06	-0.032	112.59	32.30	CONTEMP	1	1	1	1	1	1	1
ACC	0.29	0.37	0.37	0.37	0.10	0.17	0.00	0.26	0.15	0.17	0.35	0.39	0.33			ADJ TRAIT		512	874	9.69	1.270	0.24	0.520

**SWB 09324 ET****SWINGING B RANCH**

OPEN

Breeder: **Mackie & Norma Jean Bounds** • BBU#: **C1187497**
 DOB: **4/25/24** Sex: **Female** Color: **Red** ID: **09324 ET**

WB Solution 67/6
H Bar The Fix 005
 CF Satin Mist 664/6
 McAlester 4521
SWB Red Rose 13918
 CF Ravishing Ruby 111/2

CF Dream Catcher 914
 **Logan's Bengal Baby 134/0
 Slick 16 16/0
 *Misty Red 201
 J&K Cattle 1001
 Kent Mindemann 95
 **Fusion 578/3
 Tiger's Destiny 602

Highlighting the best of the Swinging B Ranch program is simple with impeccable females such as this one by The Fix. From perfectly long flowing lines to perfect structural angles this dark red female is a beauty queen in her own right. Then when considering her undeniably strong pedigree and chart topping EPD indexes in the top 10% in 4 different categories, a donor prospect like this one could be The Fix you've been looking for.



																INDIVIDUAL PERFORMANCE RECORDS							
EXPECTED PROGENY DIFFERENCES										ULTRASOUND EPDs				INDEXES			BW	WW	YW	REA	%IMF	RIB FT	RUMP FT
	CED	BW	WW	YW	MILK	MCE	MWWT	SC	STAY	AFC	REA	% IMF	RIBFAT	ST	\$M	RATIO	98	103	104	103	91	74	118
EPD	3.70	0.9	44	55	9	2.93	30.52	1.17	-2.22	-0.32	0.40	-0.27	-0.040	105.59	30.38	CONTEMP	33	4	2	2	2	2	2
ACC	0.09	0.34	0.32	0.41	0.12	0.03	0.00	0.18	0.06	0.03	0.42	0.47	0.40			ADJ TRAIT	73	467	783	8.43	2.370	0.14	0.500

**SAR REVOLUTION'S JOY****SANTA ANA RANCH**

OPEN • POLLED

Breeder: **Dr. Alvaro Restrepo** • BBU#: **C1195521**
 DOB: **4/21/24** Sex: **Female** Color: **Red** ID: **4046 RE**

CJ's Revolution 1772
Lyssy's Red Revolution 685
 Lyssy 93/688
 EMS Bet On Bubba 507
RM Amazing Prissy RMB15
 EMS/VFF Amazing Beauty 89/1

CJ's Game Changer 1316
 CJ's Hope Diamond 5/13
 New Design 30/910
 Jewella 004
 EMS Headliner 029
 EMS Bet On Buff 8062
 **Synergy 84/95
 *EMS Amazing Ace 630

Polled and pretty with performance is always in style at Santa Ana Ranch and this Red Revolution daughter is one of their best. The Amazing Prissy cow delivers clean lines and conformational correctness while Red Revolution hits hard with big individual carcass performance and the EPD's to back it up. Her top 25% \$M is just the icing on the cake of this beautiful polled female.



EXPECTED PROGENY DIFFERENCES																INDIVIDUAL PERFORMANCE RECORDS									
ULTRASOUND EPDs																INDEXES			BW	WW	YW	REA	%IMF	RIB FT	RUMP FT
	CED	BW	WW	YW	MILK	MCE	MWWT	SC	STAY	AFC	REA	%IMF	RIBFAT	ST	\$M	RATIO	103	97	96	106	133	77	96		
EPD	3.83	0.2	32	34	6	2.91	22.02	0.53	-1.42	-1.76	0.34	0.13	-0.044	74.43	23.60	CONTEMP	9	5	5	5	5	5	5		
ACC	0.15	0.45	0.42	0.43	0.12	0.03	0.00	0.23	0.05	0.03	0.43	0.49	0.41			ADJ TRAIT	81	600	844	10.66	3.320	0.17	0.370		

**AK 302/4 ET****AK BEEFMASTERS**

OPEN • POLLED

Breeder: **AK Beefmasters** • BBU#: **C1198887**
 DOB: **4/10/24** Sex: **Female** Color: **Red** ID: **302/4 LE**

WB Solution 67/6
CF Unico 219/1
 CF Bebe 795/7
 SWB Luckenbach 08614
SWB Baby D 02219
 SWB Dotsy 76-10

CF Dream Catcher 914
 **Logan's Bengal Baby 134/0
 CF Riptide 875/3
 Sugar Shana 645-6
 New Dimension 805
 Autumn's Girl 31-10
 Bullet Proof 864
 Black Staci 420

AK Beefmasters is proud to offer this POLLED powerhouse female by the great Unico super sire and their premiere donor Baby D. From length of body and muscle expression to conformational correctness and substance, this head-turning heifer is destined to find herself at the top of any donor program. Her top 30% indexes for \$T and \$M combined with massive YW measures and strong scan performance should put her at the top of your selection list.



																INDIVIDUAL PERFORMANCE RECORDS							
EXPECTED PROGENY DIFFERENCES										ULTRASOUND EPDs				INDEXES			BW	WW	YW	REA	%IMF	RIB FT	RUMP FT
	CED	BW	WW	YW	MILK	MCE	MWWT	SC	STAY	AFC	REA	% IMF	RIBFAT	ST	\$M	RATIO	102.0		*	*	*	*	*
EPD	2.97	1.4	39	48	5	3.31	24.00	0.66	-0.74	-1.12	0.16	0.03	-0.026	97.46	21.89	CONTEMP	4	1	1	1	1	1	1
ACC	0.29	0.41	0.41	0.42	0.13	0.17	0.00	0.28	0.16	0.17	0.39	0.43	0.38			ADJ TRAIT	72	496	1013	8.83	3.290	0.35	0.550

11

CWL TEMPTATION

CIRCLE WL BEEFMASTERS

OPEN

Breeder: **Kenneth & Cheryl Walther** • BBU#: **C1198650**DOB: **4/5/24** Sex: **Female** Color: **Dark Red** ID: **7324 LE**

CF Dream Catcher 914

CF Codigo 906/8

CF Picture's Portrait 794/6

EMS Bet On Bubba 507

CWL Bet On Synful 15/20

Synful Knockout 0916

**L2 Captain Sugar 12/02

**Oasis 655

CF Riptide 875/3

**The Picture Cow 463/3

EMS Headliner 029

EMS Bet On Buff 8062

Knockout 88/13

TG Miss Synergy 106

The gorgeous deep crimson color with exquisite lines and impressive rib shape will quickly grab your eye when studying this elite individual from Circle WL. Over the past several years, Codigo has made an impactful mark on the breed for delivering growth performance with good looks. The Bet on Bubba x Synful Knockout bottomside has undeniable predictability adding to the value built into this high growth donor prospect.



																INDIVIDUAL PERFORMANCE RECORDS							
EXPECTED PROGENY DIFFERENCES									ULTRASOUND EPDs				INDEXES				BW	WW	YW	REA	%IMF	RIB FT	RUMP FT
	CED	BW	WW	YW	MILK	MCE	MWWT	SC	STAY	AFC	REA	% IMF	RIBFAT	ST	\$M	RATIO	94.0	102	99	104	82	135	130
EPD	4.36	0.3	24	26	8	3.55	19.88	0.21	-4.46	-1.74	0.17	-0.28	-0.042	55.30	18.53	CONTEMP	4	4	2	2	2	2	2
ACC	0.30	0.49	0.47	0.46	0.16	0.17	0.00	0.30	0.17	0.17	0.45	0.50	0.43			ADJ TRAIT	74	631	823	9.18	1.610	0.50	0.920

12

RBSN MS DOUGHBOY
116M4 ET

ROBERTSON BEEFMASTERS

OPEN

Breeder: **Barry Robertson Jr.** • BBU#: **P352143**DOB: **3/6/24** Sex: **Female** Color: **Red White Underline** ID: **RB116M4 LE**

McAlester 4521

HDH Doughboy 745F

Mills Belle 18-2

Mr. CJ Diamond Catcher 4/17

HDH Diamond Dreams 116G

CHRK Heartbreaker 547E

J&K Cattle 1001

Kent Mindemann 95

CHRK Code Red 1690W

M&W 1004

CF Dream Catcher 914

*CJ's Diamond Of Soul

CHRK First Class 2040

CHRK 1620U

When looking to top the performance charts and up your EPD values, acquiring heifers like this brute from Robinson Ranch is essential. This massive made, heavy boned female, has all the power you want combined with the maternal softness and classic mama cow look we all love. A quick glance of her performance and pedigree will show outstanding measures and an impeccable pedigree combining some of the best in the breed. Top 4% \$T and Top 3% \$M!



																INDIVIDUAL PERFORMANCE RECORDS							
EXPECTED PROGENY DIFFERENCES										ULTRASOUND EPDs				INDEXES			BW	WW	YW	REA	%IMF	RIB FT	RUMP FT
	CED	BW	WW	YW	MILK	MCE	MWWT	SC	STAY	AFC	REA	% IMF	RIBFAT	ST	\$M	RATIO	85	114	106	111	71	56	94
EPD	5.89	-0.6	49	69	9	2.45	33.96	1.63	-0.98	0.04	0.81	-0.07	-0.044	131.73	33.19	CONTEMP	4	4	4	4	4	4	4
ACC	0.29	0.39	0.39	0.46	0.15	0.17	0.00	0.31	0.16	0.17	0.47	0.54	0.46			ADJ TRAIT	82	624	793	10.13	2.350	0.12	0.370

13

BC 114/24 ET

BECK CREEK RANCH LLC

OPEN

Breeder: **Mark Moore** • BBU#: **C1199985**DOB: **3/4/24** Sex: **Female** Color: **Red** ID: **114/24 LE**

VFF New Horizon 19/3

VFF Enforcer 306E

VFF MS ADV 77-4

CF Gulf Stream 273/7

Collier CF 701/1

CJ Superior Dream 1117

**Maverick 17/557

VFF Honey Girl 43/8

VFF MR 16/2

Cain 009Y

CF Riptide 875/3

**The Picture Cow 463/3

CF Dream Catcher 914

*Miss Superior 8

Over the past several years, Enforcer has proven to be one of the most sought after and high value producing bulls in the breed. Mark and Janan Moore of Beck Creek have committed this highlight female out of their Gulf Stream x Superior Dream donor, delivering the best in both maternal lines and performance genetics. Study the huge top, massive square hip dimension and overall show ring presence in this stellar individual possessing a magnificent EPD profile.



																INDIVIDUAL PERFORMANCE RECORDS							
EXPECTED PROGENY DIFFERENCES									ULTRASOUND EPDs				INDEXES				BW	WW	YW	REA	%IMF	RIB FT	RUMP FT
	CED	BW	WW	YW	MILK	MCE	MWWT	SC	STAY	AFC	REA	% IMF	RIBFAT	ST	\$M	RATIO	108						
EPD	4.10	0.1	48	69	9	2.95	32.98	0.99	-1.24	-1.25	0.37	0.19	-0.011	135.39	28.49	CONTEMP	2	1					
ACC	0.08	0.35	0.38	0.39	0.16	0.04	0.00	0.029	0.05	0.04	0.35	0.36	0.35			ADJ TRAIT	72	623					

14

V7 2406

V-SEVEN BEEFMASTERS

OPEN

Breeder: **Melvin Scherer Jr** • BBU#: **C1191118**DOB: **2/26/24** Sex: **Female** Color: **Red** ID: **2406 LH**

WB Solution 67/6

CF Unico 219/1

CF Bebe 795/7

CF Brock 450/3

CF Certainly Sassy 735/8

*CF Sassy 8993

CF Dream Catcher 914

**Logan's Bengal Baby 134/0

CF Riptide 875/3

Sugar Shana 645-6

**Vision 905

Red Essence 129/07

**Fusion 578/3

CF Sassy Momma 528

When it comes to maternal abilities, none do it better than V-Seven and Certainly Sassy! This impressively long made, straight lined female delivers the growth and stretch of Unico and blends it with the legendary maternal genetics of the CF Sassy cow family. From her Top 15% WW EPD to her Top 1% \$M index, this flashy red female has the pedigree and the maternal performance to get the job done for years to come.



EXPECTED PROGENY DIFFERENCES															ULTRASOUND EPDs		INDEXES		INDIVIDUAL PERFORMANCE RECORDS							
	CED	BW	WW	YW	MILK	MCE	MWWT	SC	STAY	AFC	REA	% IMF	RIBFAT	\$T	\$M	RATIO	BW	WW	YW	REA	%IMF	RIB FT	RUMP FT			
EPD	3.07	0.9	42	42	10	3.06	30.62	0.92	-1.63	-0.78	-0.17	-0.16	-0.041	84.20	36.49	CONTEMP	4	2	1	1	1	1	1			
ACC	0.30	0.49	0.47	0.43	0.15	0.17	0.00	0.29	0.16	0.17	0.39	0.42	0.37			ADJ TRAIT	74	724								

15

S3 2144

S3 BEEFMASTERS

OPEN • POLLED

Breeder: **Abe & Grace, Danny & Melanie Saenz** • BBU#: **C1187804**DOB: **2/14/24** Sex: **Female** Color: **Red** ID: **2144 LH**

CF Brock 450/3

CF Bravado 373/5

**Betty's Last 45/1

CJ's Revolution 1772

Hilltop 4C 946-22

SWB Sweet Annie 11217

**Vision 905 905/7

Red Essence 129/07

Bryan 126/6

Diamond W 34/3

CJ's Game Changer 1316

CJ's Hope Diamond 5/13

Bullet Proof 864

Brown Eyed Girl JT69

Bravado continues to top sales and futurities across the industry and this perfectly POLLED daughter delivers in style. From her perfect conformational design and undeniable eye-appeal to her world class pedigree, this darling from Saenz S3 is certain to impress. Revolution and Bullet Proof deliver a double punch of polled genetics while additionally increasing growth and carcass performance. Don't miss her massive REA and IMF measures!



															INDIVIDUAL PERFORMANCE RECORDS								
EXPECTED PROGENY DIFFERENCES									ULTRASOUND EPDs				INDEXES			BW	WW	YW	REA	%IMF	RIB FT	RUMP FT	
	CED	BW	WW	YW	MILK	MCE	MWWT	SC	STAY	AFC	REA	% IMF	RIBFAT	\$T	\$M	RATIO	98		*	*	*	*	*
EPD	5.97	-0.9	23	23	4	3.47	15.54	0.44	-3.16	-0.45	0.05	0.12	-0.042	55.23	17.84	CONTEMP	3	1	1	1	1	1	1
ACC	0.30	0.49	0.43	0.45	0.17	0.17	0.00	0.33	0.16	0.17	0.42	0.45	0.41			ADJ TRAIT	82	617	839	11.65	3.040	0.32	0.390

16

TND MAIDEN DREAM 2404 RE

TND BEEFMASTERS

OPEN

Breeder: **Ty Duesterheft** • BBU#: **P1191848**DOB: **1/29/24** Sex: **Female** Color: **Red** ID: **2404 RE**

**L2 Captain Sugar 12/02

CF Dream Catcher 914

**Oasis 655

**Cavalier 19/5

Diamond Maiden 1931/4

L2 Maiden Lady 154/00

**Infinity 120/96

**Sugar Ann 45/6

**Cavalier 19/5

**Sex Life 388

**Spartacus 86/653

**Lazy M 1-5/5

**Synergy 84/95

**Infinite Lady 79/98

If you are serious about acquiring a super elite individual with extraordinary exclusivity, then double star this last of her kind from TND Beefmasters. Diamond Maiden has long passed on and only a handful of daughters remain. Ty was holding on to this frozen embryo waiting for the perfect time to put it in and create this beauty. The last of the sisters sold a few years back for \$35- \$70,000 and there are no more to be had to our knowledge.



																INDIVIDUAL PERFORMANCE RECORDS							
EXPECTED PROGENY DIFFERENCES									ULTRASOUND EPDs				INDEXES				BW	WW	YW	REA	%IMF	RIB FT	RUMP FT
	CED	BW	WW	YW	MILK	MCE	MWWT	SC	STAY	AFC	REA	% IMF	RIBFAT	\$T	\$M	RATIO	*		*	*	*	*	*
EPD	0.97	3.0	36	44	8	2.90	25.33	0.28	-5.68	-1.09	-0.26	-0.21	-0.042	86.89	19.55	CONTEMP	1	1	1	1	1	1	1
ACC	0.11	0.46	0.47	0.47	0.36	0.07	0.00	0.38	0.18	0.07	0.42	0.43	0.41			ADJ TRAIT	58	662		744	2.980	0.10	0.230

17

WB DUSTIE UNICO ET**WAYNE BRYANT**

OPEN

Breeder: **Wayne Bryant** • BBU#: **C1187942**DOB: **1/27/24** Sex: **Female** Color: **Red** ID: **150/4 LE**

WB Solution 67/6

CF Unico 219/1

CF Bebe 795/7

****Vision 905 905/7******CF Dusty Vision 964/4******Dusty Cotton 977/1**

CF Dream Catcher 914

****Logan's Bengal Baby 134/0**

CF Riptide 875/3

Sugar Shana 645-6

****Logan 62M27******Penelope 293J11******Classic Cotton 89/135**

Miss Dusty 45/7

Selecting the perfect pairings of great individuals has been the heart and soul of Wayne Bryant Beefmasters and this darling doesn't disappoint. The combination of Unico on the great Dusty Vision donor has consistently produced perfectly straight lined cattle with the ideal color and design. This impeccably designed female has the additional growth and carcass performance demanded with a 10" REA, IMF over 3% and YW pushing 1,000 pounds.



																INDIVIDUAL PERFORMANCE RECORDS							
EXPECTED PROGENY DIFFERENCES										ULTRASOUND EPDs				INDEXES			BW	WW	YW	REA	%IMF	RIB FT	RUMP FT
	CED	BW	WW	YW	MILK	MCE	MWWT	SC	STAY	AFC	REA	% IMF	RIBFAT	ST	\$M	RATIO	99	102	102	101	99	84	114
EPD	1.83	1.9	35	40	5	3.22	22.72	0.80	-1.94	-0.21	-0.05	-0.17	-0.045	79.61	22.80	CONTEMP	3	3	2	2	2	2	2
ACC	0.29	0.43	0.44	0.49	0.18	0.17	0.00	0.31	0.18	0.17	0.48	0.53	0.46			ADJ TRAIT	70	615	959	9.93	3.260	0.24	0.570

18

GMR MS 1014**GOLDEN MEADOWS RANCH LLC**

OPEN

Breeder: **Golden Meadows Ranch LLC**BBU#: **C1199970**DOB: **3/1/24**Sex: **Female**Color: **Red**ID: **1014 RT**

Golden Meadows Ranch is known for a superior bull battery, but their current mainstay for predictability and profitability is Creedmoor.

From futurity winning females to impressive herd sire prospects, Creedmoor continues to deliver gorgeous individuals like this one.

The dam of this doll is a full sister to The Fix semen sire displaying the depth of consistency wrapped up in this maternal masterpiece. Study her top 10% \$M and big carcass scan to find even more you'll like!



Sire of Lot 18

CF Creedmoor 744/0

CF Prime 8 140/5

CF Creedmoor 744/0

CF Vivid Oasis 713

WB Solution 67/6

H Bar 010

CF Satin Mist 664/6

****Logan 62M27*****Miss Superior 8******Infinity 120/96******Oasis 655**

CF Dream Catcher 914

****Logan's Bengal Baby 134/0**

Slick 16 16/0

***Misty Red 201**

																INDIVIDUAL PERFORMANCE RECORDS							
EXPECTED PROGENY DIFFERENCES										ULTRASOUND EPDs				INDEXES			BW	WW	YW	REA	%IMF	RIB FT	RUMP FT
	CED	BW	WW	YW	MILK	MCE	MWWT	SC	STAY	AFC	REA	% IMF	RIBFAT	ST	\$M	RATIO	104	101	103	107	107	109	123
EPD	6.07	-0.8	35	39	7	2.51	24.04	0.92	-5.43	-0.56	-0.15	0.12	-0.022	81.83	28.45	CONTEMP	10	7	6	6	6	6	6
ACC	0.31	0.50	0.48	0.50	0.16	0.17	0.00	0.30	0.16	0.17	0.50	0.56	0.48			ADJ TRAIT	58	614	879	8.87	3.860	0.24	0.580

22

RB 204/3 ET

ROCKING RB CATTLE CO

BRED

Breeder: **Camaron & Erin Cox** • BBU#: **C1193358**DOB: **10/7/23** Sex: **Female** Color: **Red** ID: **RB204/3 LE**Service Sire: **JT Daybreak C1160221**

WB Solution 67/6

CF Dream Catcher 914

**Logan's Bengal Baby 134/0

CF Resolution 520/9

Diamond Maiden 1931/4

**Cavalier 19/5

L2 Maiden Lady 154/00

CF Bravado 373/5

CF Brock 450/3

CF Queen Annabelle 406/1

CF Bengal Queen 7352

**Betty's Last 45/1

Five V Tank 376

CF Baby Bengal 138/0

The heart of the Beefmaster

breed lies in classic

maternal cattle backed by

generations of proven cow families and this iconic beauty displays the very best around. Rocking RB masterfully blended Diamond Maiden and Oasis with a double shot of Bengal Baby to create maternal perfection. A stringent evaluation of this masterpiece will show long flowing lines, incredible depth of body, and smooth feminine front complimented with top tier EPD's and performance.



EXPECTED PROGENY DIFFERENCES

ULTRASOUND EPDs

INDEXES

INDIVIDUAL PERFORMANCE RECORDS

	CED	BW	WW	YW	MILK	MCE	MWWT	SC	STAY	AFC	REA	% IMF	RIBFAT	ST	SM	RATIO	BW	WW	YW	REA	%IMF	RIB FT	RUMP FT
EPD	1.84	1.9	35	41	8	2.93	25.98	0.45	-2.84	0.16	-0.38	-0.13	-0.039	82.76	23.59	CONTEMP	5	3	2	2	2	2	2
ACC	0.29	0.39	0.40	0.47	0.14	0.17	0.00	0.29	0.16	0.17	0.47	0.53	0.46			ADJ TRAIT	84	617	788	8.31	3.120	0.19	0.350

23

L2 6/24 ET

L2 RANCH

BRED

Breeder: **Fred E. Long** • BBU#: **C1184135**DOB: **10/14/23** Sex: **Female** Color: **Red** ID: **6/24 LH**Service Sire: **L2 26/24 C1188880**

Bushwacker 42/11

**CF Sugar Britches 040

Carmenett 15/00

L2 Enco 12/18

FR 668 Letty

Captains Dream 124/05

Emmons 7015

**CF Sugar Britches 040

**L2 Captain Sugar 12/02

Crimson Lady 109/15

Jacklin 94/10

**Oasis 655

L2 Captain Jack 43/07

L2 Simply Sugar 78/99

For decades, one name has

become synonymous with

the creation of legendary

cow families, L2 Ranch. The

dedication and perseverance of L2 to deliver the best in maternal genetics has

been unmatched and this elite individual showcases those efforts. Enco back on

Crimson Lady is the culmination of generations of planned mating that delivered

this impeccable individual. With a perfectly balanced EPD profile and strong carcass

measures, this bred female has legendary opportunities of her own.



EXPECTED PROGENY DIFFERENCES

ULTRASOUND EPDs

INDEXES

INDIVIDUAL PERFORMANCE RECORDS

	CED	BW	WW	YW	MILK	MCE	MWWT	SC	STAY	AFC	REA	% IMF	RIBFAT	ST	SM	RATIO	BW	WW	YW	REA	%IMF	RIB FT	RUMP FT
EPD	1.71	2.1	26	37	8	3.20	20.70	0.07	-3.66	-1.29	-0.02	0.06	-0.013	78.81	11.73	CONTEMP	7	2	1	1	1	1	1
ACC	0.29	0.43	0.42	0.43	0.18	0.17	0.00	0.30	0.17	0.17	0.41	0.44	0.39			ADJ TRAIT	69	567	821	8.87	2.720	0.39	0.550

24

HDH MS BERNARD 182L12

HIATT DIAMOND H

BRED • POLLED

Breeder: **Neal C. Hiatt** • BBU#: **C1201124**DOB: **10/3/23** Sex: **Female** Color: **Black** ID: **182L12 RE**Service Sire: **NG Leonidas C1170773**

*EMS Ring Of Fire 130

Bonfire 8038

EMS Color Me Sugar 811

CJ's Bernard 1724

Miss CJ 1014

CJ Moneymaker 707

Miss CJ 737

CHRK Kong 414D

Ace Of Spades 64/2

CHRK 1984

HDH Ms Kong 0311

RMB Wicked Sugar M31

**L2 Captain Sugar 12/02

**Wicked Witch 7/04

Powerful POLLED performance

in a beautiful black package

just begins to highlight the

attributes projected by this shining star from Hiatt's Diamond H. Bernard progeny

have been in high demand and are known for extreme length, great fronts, and tons

of performance. This big bodied bred heifer displays the rib shape, mass, and growth

breeders have come to expect from the HDH program. Fleshing easy, functionality,

and productivity are just an added bonus one will get with this donor prospect.



EXPECTED PROGENY DIFFERENCES

ULTRASOUND EPDs

INDEXES

INDIVIDUAL PERFORMANCE RECORDS

	CED	BW	WW	YW	MILK	MCE	MWWT	SC	STAY	AFC	REA	% IMF	RIBFAT	ST	SM	RATIO	BW	WW	YW	REA	%IMF	RIB FT	RUMP FT
EPD	3.54	0.4	28	40	11	2.49	25.13	0.40	-0.54	-0.90	0.13	0.25	-0.012	87.15	18.42	CONTEMP	1	1	1	1	1	1	1
ACC	0.29	0.39	0.40	0.40	0.17	0.17	0.00	0.35	0.17	0.17	0.37	0.40	0.36			ADJ TRAIT	72	651	815	10.16	2.150	0.17	0.250

Lot 25 (A & B) : PICK OF FLUSH



LYSSY KARMA'S MIRAGE

LYSSY BEEFMASTERS
POLLED

Breeder: **Lyssy Beefmasters** - BBU#: **C1162431**
DOB: **10/27/21** Sex: **Female** Color: **Red** ID: **101/257 LH**

VFF New Horizon 19/3
VFF Enforcer 306E
VFF MS ADV 77-4
Red Ryder 8035
***Lyssy's Karma 113/54**
**Siiri 448/8

**Maverick 17/557
VFF Honey Girl 43/8
VFF MR 16/2
Cain 009Y
*Black Bayou 1071/3
*EMS Amazing Ace 630
**Tabasco 3018K10
Clementine 293L23



																INDIVIDUAL PERFORMANCE RECORDS							
EXPECTED PROGENY DIFFERENCES										ULTRASOUND EPDs				INDEXES			BW	WW	YW	REA	%IMF	RIB FT	RUMP FT
	CED	BW	WW	YW	MILK	MCE	MWWT	SC	STAY	AFC	REA	% IMF	RIBFAT	ST	SM	RATIO	102	107	114	105	106	108	102
EPD	4.24	0.6	53	74	9	2.33	35.58	1.19	1.12	-1.04	0.36	0.25	-0.022	145.45	31.26	CONTEMP	14	14	14	14	14	14	14
ACC	0.30	0.49	0.50	0.57	0.24	0.18	0.00	0.46	0.19	0.18	0.58	0.63	0.56			ADJ TRAIT	74	774	1233	14.66	3.580	0.68	0.950

LYSSY FL
Beefmasters

Exclusively for the 2025 BBU convention, Lyssy Beefmasters has provided breeders with a rare opportunity to select a flush from 2 of their elite donors. The Lyssy program and their respective cattle and frozen genetic sales have topped the charts for results and value. The ability to select from either the famous 103/685 cow or new Karma's Mirage could give any program the upper hand on producing the next great semen sire or super donor cow. Lyssy 103/685 is a legend in her own right, producing top herd sires like Miller 838, 898, All-In-One, American Rival and 50K. This highly proven donor by Maverick and out of Jewella is polled and possesses fabulous EPD and performance measures. Karma's Mirage offers a foundation in the past and a look into the future. This young upcoming donor puts Enforcer and Karma together to create a high performance polled individual with top 1% \$T and top 3% \$M values. Her amazing looks and genetic consistency make her the go-to donor of the future at Lyssy Beefmasters. *Lyssy Beefmasters guarantees buyer a minimum of 6 viable embryos. Donor may be re-worked or embryo cost pro-rated at sellers choice if flush/aspiration produces less than 6. Flush/aspiration costs are at buyers expense. Seller will make donor available to buyer at a mutually agreeable time and ET facility during the fall of 2025. Seller makes no warranties as to pregnancies obtained from made embryos. Seller will provide buyer with embryo bill of sale for each embryo but buyer must provide seller with the necessary A.I. signatures at buyers expense.*



LYSSY 103/685

LYSSY BEEFMASTERS
POLLED

Breeder: **Lyssy Beefmasters** - BBU#: **C1040110**
DOB: **10/19/13** Sex: **Female** Color: **Red** ID: **103/685 LH**

*Spear Ranches 9020
****Maverick 17/557**
**Miss Tabasco 929/4
Red Ryder 8035
Jewella 004
Cottage Farm 901

SMU Salsa 94-403
Spear Ranches 5130-2C
**Tabasco 3018K10
Collier Farms 83/8
*Black Bayou 1071/3
*EMS Amazing Ace 630
**CF Sugar Britches 040
Cottage Farm 835



																INDIVIDUAL PERFORMANCE RECORDS							
EXPECTED PROGENY DIFFERENCES										ULTRASOUND EPDs				INDEXES			BW	WW	YW	REA	%IMF	RIB FT	RUMP FT
	CED	BW	WW	YW	MILK	MCE	MWWT	SC	STAY	AFC	REA	% IMF	RIBFAT	ST	\$M	RATIO			92	100	93	77	80
EPD	4.68	-1.2	35	46	12	2.54	29.43	1.22	-1.91	-1.10	-0.16	0.20	-0.013	95.28	30.83	CONTEMP	1	1	3	3	3	3	3
ACC	0.35	0.78	0.77	0.79	0.51	0.23	0.00	0.66	0.34	0.23	0.80	0.83	0.79			ADJ TRAIT	65	573	748	9.16	3.66	0.17	0.3

26A**3 FEMALE EMBRYOS**

NG Hall of Fame L968 x CF Simply Vivid

ROCKING SMH & MARC LOPEZ BEEFMASTERS**Sire:** NG Hall of Fame L968 C1194466 DNA NE04487396 PV POLLED**Dam:** CF Simply Vivid 305/1 LE C1150803 DNA 9518035516 PV

Sire of Lot 26A

NG Hall of Fame L968

NG Brett 1849J5

NG Hall of Fame L968

NG Reba's Destiny 622J13

CF Riptide 875/3

CF Simply Vivid 305/1

CF Vivid Oasis 713

MCK Flint Rock 142

CHRK Black Ruby 1849X

CHRK Genesis 1500T

*Destiny 4622

**Tabasco 3018K10

*CF Raquel 933/9

**Infinity 120/96

**Oasis 655

Dam of Lot 26A

CF Simply Vivid

One of the most prolific and proven young donors in the breed today is Simply Vivid. This amazing donor is carrying the torch for Oasis and Vivid Oasis cow families. The opportunity to blend her with one of the hottest new polled sires in the industry is one to grab. Imagine what a polled Hall of Fame bull or heifer calf by this great donor could do in the pasture or sale ring. Buyer can use SMH weaned calf program and get 1 guaranteed live calf. *Embryos located at TransOva Genetics in Bryan, TX.*

**26B****3 FEMALE EMBRYOS**

CF Unico x NG MS Padre

ROCKING SMH & MARC LOPEZ BEEFMASTERS**Sire:** CF Unico 219/1 LE C1156916 DNA 9518022515 PV POLLED**Dam:** NG MS Padre 622K34 LE C1173894 DNA 21121059581 PV POLLED

Sire of Lot 26B

CF Unico

WB Solution 67/6

CF Unico 219/1 LE

CF Bebe 795/7

CJ's Game Changer 1316

NG MS Padre 622K34 LE

*Destiny 4622

CF Dream Catcher 914

**Logan's Bengal Baby 134/0

CF Riptide 875/3

Sugar Shana 645-6

CJ's Justice J100

Brindle Baby Of Soul 7222

J&K Cattle 1001

*Frenzel 971

Dam of Lot 26B

NG MS Padre

The hottest bull going in the breed for 2025 is definitely Unico. Unico has produced countless high selling bulls and females in the last 2 years and the momentum is bound to continue. Then place an exclusive polled donor like MS Padre into the mix and the potential is unlimited. This mating creates an opportunity for a homozygous polled individual with breed leading EPD's and unparalleled good looks. Buyer can use SMH weaned calf program and get 1 guaranteed live calf. *Embryos located at TransOva Genetics in Bryan, TX.*

27A**3 IVF EMBRYOS**

NG King Air 936L4 x BF1 2325 ET

MARC LOPEZ BEEFMASTERS**Sire:** NG King Air 936L4 C1184267 DNA NE049247768 PV POLLED**Dam:** BF1 2325 ET C1183391 DNA 111422001609 PV POLLED

Sire of Lot 27A

NG King Air 936L4

NG Gulf Stream 1849G7

NG King Air 936L4

JH Rhiannon 936

CJ's Game Changer 1316

BF1 2325 ET

Cottage Farm 914

McAlester 4521

CHRK Black Ruby 1849X

CJ's Bernard 1724

MS Hood 523

CJ's Justice J100

Brindle Baby Of Soul 7222

CF Masterpiece 685

Miss CJ 16/15

Dam of Lot 27A

BF1 2325 ET

If you're looking for the future of black Beefmasters, this set of embryos from Lopez Beefmasters is sure to grab your attention. King Air mated with the 2025 Houston Magic high selling female BF 2325 could be one of the most exciting opportunities available anywhere. This high performance polled Game Changer daughter boasts top 2% \$T and \$M indexes and King Air delivers additional exclusivity with his superior polled performance and outstanding design. *Embryos located at TransOva Genetics in Bryan, TX.*



27B

3 FEMALE IVF EMBRYOS**MARC LOPEZ BEEFMASTERS**

NG Hall of Fame L968 x CF Southern Queen 179/2

Sire: NG Hall of Fame L968 C1194466 DNA NE04487396 PV POLLED**Dam:** CF Southern Queen 179/2 LE C1179626 DNA 21121059524 PV

NG Brett 1849J5

NG Hall of Fame L968

NG Reba's Destiny 622J13

CF Bravado 373/5

CF Southern Queen 179/2

CF Bengal Queen 7352

MCK Flint Rock 142

CHRK Black Ruby 1849X

CHRK Genesis 1500T

*Destiny 4622

CF Brock 450/3

**Betty's Last 45/1

Five V Tank 376

CF Baby Bengal 138/0

Sire of Lot 27B

NG Hall of Fame L968

Dam of Lot 27B

CF Southern Queen

Serious breeders watching the market have readily seen what donors by Bravado and Bengal Queen have produced. Lopez Beefmasters acquired Southern Queen, the full sister to Queen Annabelle, Screamin Queen, Bengal Beauty and others, then put her to work with Hall of Fame to give you a shot at some of the most cutting edge genetics around. Great looks, strong numbers and a chance to be polled just begin to touch on the attributes coming here. *Embryos located at TransOva Genetics in Bryan, TX.*



28A

3 CONVENTIONAL IVF EMBRYOS

CF Gulf Stream x CF Bengal Beauty

3C COLBURN CATTLE COMPANY**Sire:** CF Gulf Stream 273/7 LH C1092791 DNA US400772479 PV**Dam:** CF Bengal Beauty 404/1 LE C1174686 DNA 21121057877 PV

CF Riptide 875/3

CF Gulf Stream 273/7

**The Picture Cow 463/3

CF Bravado 373/5

CF Bengal Beauty 404/1

CF Bengal Queen 7352

**Tabasco 3018K10

*CF Raquel 933/9

Seven-C Anderson 007

**Mary Kay 765/7

CF Brock 450/3

**Betty's Last 45/1

Five V Tank 376

CF Baby Bengal 138/0

Sire of Lot 28A

CF Gulf Stream

Dam of Lot 28A

CF Bengal Beauty

Easily one of the most attractive donors ever produced by Collier Farms is Bengal Beauty. This perfectly named super donor was acquired by 3C Colburn Cattle Co. as the high selling lot at the Spring 2024 Advantage Sale. Mating her with the great CF Gulf Stream bull was the perfect blend to create females like those that sold by RSMH at the 2024 convention for \$35,000 each. This set of embryos creates exclusivity and proven value, don't miss out! *Embryos located at TransOva Genetics in Bryan, TX.*

28B

3 REVERSE SORT FEMALE EMBRYOS

NG Brett 1849J5 x CF Bengal Beauty

3C COLBURN CATTLE COMPANY**Sire:** NG Brett 1849J5 RH C1157055 DNA NE01911423 PV POLLED**Dam:** CF Bengal Beauty 404/1 LE C1174686 DNA 21121057877 PV

MCK Flint Rock 142

NG Brett 1849J5

CHRK Black Ruby 1849X

CF Bravado 373/5

CF Bengal Beauty 404/1

CF Bengal Queen 7352

Summit 5306

*Channarock 0198

*Black Bayou 1071/3

**CHRK Miss Reba 1194/5

CF Brock 450/3

**Betty's Last 45/1

Five V Tank 376

CF Baby Bengal 138/0

Sire of Lot 28B

NG Brett 1849J5

Dam of Lot 28B

CF Bengal Beauty

Polled super sires are extremely rare and valuable and Colburn Cattle Co. has put one such star to work for them. NG Brett, the sire of Hall of Fame and other outstanding individuals was mated with Bengal Beauty to give breeders a shot at polled performance with world class conformation. Brett delivers high performance data and low birth weight while Bengal Beauty delivers some of the very best looks ever produced from Collier Farms. *Embryos located at TransOva Genetics in Bryan, TX.*

Lot 29 and Lot 30 OASIS EMBRYOS

Dam of Lots 29 A-C & Lots 30 A-C



Breeder: **Cottage Farm**
BBU#: **C1152388**
DOB: **11/1/20**
Sex: **Female**
Color: **Red**
ID: **099 LE**
DNA 102120045999 SV



Cottage Farms has gone above and beyond to create what could be the greatest offering of Oasis embryos of all time. This smorgasbord of female and convention embryos out of their 099 Oasis clone gives breeders a shot at some of the hottest bulls in the industry today. From polled performance sires like King, Firestone, Daybreak, and Revolution to proven maternal masters like Crimson and Unico, the opportunities are limitless. The productivity and consistency of Oasis is unrivaled. Without question this timeless donor is the greatest of all time and now you have a shot to put her genetics to work for you with any one of these superstar young sires.



Reverse Sort Female IVF Embryos



LOT 29A - 6 IVF Female Embryos

Sire: NG Firestone 1840K13 C1178817 POLLED
Dam: cf Clone Oasis 099



LOT 29B - 6 IVF Female Embryos

Sire: CJ King 2303 RH C1182343 POLLED
Dam: cf Clone Oasis 099



LOT 29C - 6 IVF Female Embryos

Sire: CJ's Revolution 1772 RH C1098860 POLLED
Dam: cf Clone Oasis 099



Non-Sexed IVF Embryos



LOT 30A - 6 IVF Embryos

Sire: JT Daybreak JT4921 RE C1160221 POLLED
Dam: cf Clone Oasis 099



LOT 30B - 6 IVF Embryos

Sire: L2 Crimson 96/16 LH C1075549
Dam: cf Clone Oasis 099



LOT 30C - 6 IVF Embryos

Sire: CF Unico 219/9 LE C1156916 POLLED
Dam: cf Clone Oasis 099

cf Clone Oasis 099
****Cavalier 19/5**
****Spartacus 86/653**
****Sex Life 388**
****Lazy M 1-5/5**
****Sandman 10-1**
****Sex Appeal 062/0**
****Gladiator 8/36**
****Dreamlady 2C9-77**
****Ranger's Pride 815/9**
****Kentucky Princess 9039**
****King Cotton 179**
****Miss Farrah 1/010**
****Levi (FBA #6583) 369**
****Adair 062/7**

Lot 29 A,B,C are reverse sort female IVF embryos and Lot 30 A,B,C are non-sexed IVF embryos. Embryos located at Cottage Farm Genetics in Jackson, TN.

31A&B

3 CONVENTIONAL EMBRYOS

Dam: BLJ Sweet Girl 3131/8

BENNETT JANSSEN

Dam: BLJ MS Sweet Girl 3131/8 LE C1138108 DNA US9002168077

31A – Sire: CF Unico 219/1 LE C1156916 DNA 9518022515 PV POLLED

31B – Sire: WR SAV Blake 52/21 LE C1146970 DNA 111422031923 PV POLLED

*Ace In The Hole 70/3

Low Family 29/13

BLJ MS Sweet Girl

ROD 937

Hope's Vision 221/7

ROD 693

ROD 511

**Black Jack 21

Sugar Pie 42/01

**Black Jack 21

Clara's Hope 1114/3

**L2 Captain Sugar 12/02

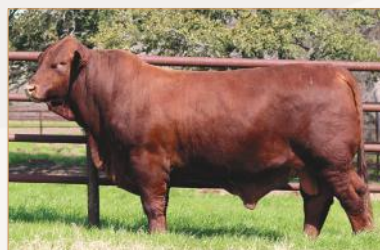
Sralla 432

ROD Shalako 819

ROD 602

Dam of Lot 31 A&B

BLJ MS Sweet Girl



Sire of Lot 31A **CF Unico**



Sire of Lot 31B **WR SAV Blake**

Show ring appeal and pasture production is what Sweet Girl is all about at Janssen Beefmasters. The 2025 West Texas Fair Produce of Dam Champion was awarded to Sweet Girl for her best in show calf crop presented. This proven producer of winners was a past champion herself and now puts you in position to capitalize off great looks and productivity. Offering buyer's choice of either Unico or Blake embryos and this beauty queen donor. Embryos located at TransOva Genetics in Bryan, TX.

32A-C

EMBRYOS

Dam: JK Sugar Bowl 255/5

KREGER RANCH

32A-C Dam: JK Sugar Bowl 255/5 LH

C1072440 DNA US9001911674 PV

32B – 3 IVF GRADE 1 EMBRYOS

Sire: CF Unico 219/1 LE POLLED

C1156916 DNA 9518022515 PV

Dam of Lot 32 A-C

JK Sugar Bowl

32A – 3 IVF GRADE 1 EMBRYOS

Sire: JK Magnitude 564/3 RR

C1184380 DNA NE04031724 SV

32C – 3 CONVENTIONAL GRADE 1 EMBRYOS

Sire: CJ's Game Changer 1316 RH

C1040746 DNA US400481285 ZHD50K DV

**Infinity 120/96

****L2 Captain Sugar 12/02**

**Sugar Ann 45/6

JK Sugar Bowl 255/5

Cottage Farm Ava 778

**Sex Life 388

**Red Sugar 104/93

**Vanna 5660

**Ranger's Pride 815/9

**EMS 6-2

**Spartacus 86/653

**Lazy M 1-5/5

**Sandman 10-1

**Sex Appeal 062/0

Sire of Lot 32A

JK Magnitude



Sire of Lot 32B

CF Unico



Sire of Lot 32C

CJ's Game Changer



Imagine the opportunity to take a legacy donor from royal lines and combine her with some of the most proven polled super sires on the market today. Kreger Ranch has achieved this very creation by mating their Sugar Bowl donor to Magnitude, Unico, and Game Changer. Sugar Bowl is the genetic full sibling to maternal greats like Madam Secretary, Mother Nature, and Danica. She places Captain Sugar back over Ava, the full sister of Oasis. Sugar Bowl progeny have topped the Kreger Ranch and Genetic Investment Sales and now you have a shot to produce progeny that could top the next big event for your program. Big time carcass and growth EPD's are present in all three great sires for the perfect mix of polled performance.

JK Sugar Bowl 255/5

																INDIVIDUAL PERFORMANCE RECORDS							
EXPECTED PROGENY DIFFERENCES										ULTRASOUND EPDs				INDEXES			BW	WW	YW	REA	%IMF	RIB FT	RUMP FT
	CED	BW	WW	YW	MILK	MCE	MWWT	SC	STAY	AFC	REA	%IMF	RIBFAT	ST	\$M	RATIO	86		119	118	82	116	119
EPD	1.61	2.2	26	28	6	3.83	18.87	0.11	-7.21	-2.32	-0.07	-0.18	-0.041	58.57	16.33	CONTEMP	11	1	10	10	10	10	10
ACC	0.33	0.60	0.61	0.66	0.41	0.21	0.00	0.53	0.33	0.21	0.66	0.71	0.64			ADJ TRAIT	81	704	869	9.29	2.58	0.19	0.35

Lot 33 (A - H) : PICK OF 4 EMBRYOS (Minerva x Pick of Bulls)



DAM - VFF MINERVA 2190K

TOMBIGBEE FARM

John Summerford

Dam: VFF Minerva 2190K LH C1169537 DNA NE02965648 PV

****L Bar 5502**

***Double L 7008**

VFF Minerva 2190K

***Five V Tanks Momma Vinson 934**

***Spear Ranches 3036**

L Bar 2174
Broussard 0/3918

L Bar 0422

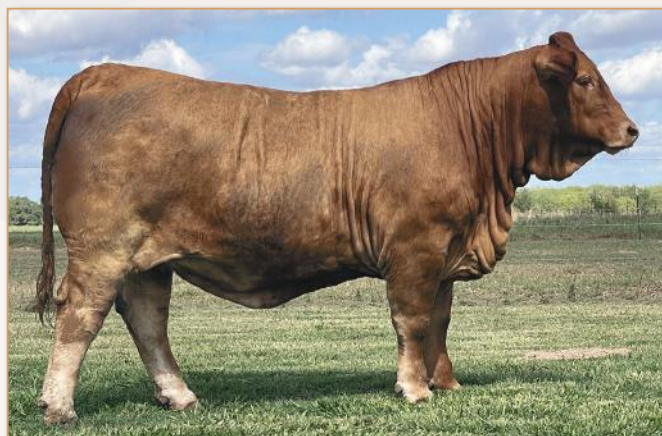
L Bar 1410

****L Bar 5502**

***L Bar 9241**

***Spear Ranches 9020**

***Spear Ranches 8082**



Dam of Lots 33 A - H: **VFF Minerva 2190K**

From Dr. John Summerford and Tombigbee Properties comes an extraordinarily unique offering of embryos from their leading donor Minerva. Minerva (also known as Tank's sister) was acquired as the high selling female at the 2023 Beef on Forage Maternal Collection sale. This powerhouse individual combines depth, bone, and muscling with incredible growth and carcass performance. From her huge 12" REA and impressive 3% IMF to her top 2% \$T and 5% \$FE, this performance tycoon truly has it all. Masterfully, Dr. Summerford mated her with a variety of some of the leading semen sires in the industry to create exclusive combinations never seen before. From show sires to trait leaders, this pick of embryos offers something for everyone out of one impressive individual. *Embryos located at TransOva Genetics in Bryan, TX.*



LOT 33A

Sire: WR SAV Blake 52/21 POLLED
C1146970



LOT 33B

Sire: ML Checkmark 028
C1124621



LOT 33C

Sire: LRB Ledger 2208
C1164642



LOT 33D

Sire: Summit 5306
C1066252



LOT 33E

Sire: VFF Enforcer 306E
C1087935



LOT 33F

Sire: FMC Magnitude 8527
C1103558



LOT 33G

Sire: CHRK Genesis 1500T POLLED
C955208



TOMBIGBEE FARM
BEEFMASTERS



LOT 33H

Sire: Schneider 0481 POLLED
C994584

34A**PICK OF 3 EMBRYOS**

Dam: Lyssy 107/130

3J CATTLE COMPANY**Dam:** Lyssy 107/130 LH C1105612 DNA NE00890301 SV**34A – Sire:** CF Unico 219/1 LE C1156916 DNA 9518022515 PV POLLED**34A – Sire:** NG Bedrock 622L8 LE C1184269 DNA NE03228277 PV POLLED

*Spear Ranches 9020

Salsa 94-403

****Maverick 17/557**

Spear Ranches 5130-2C

**Miss Tabasco 929/4

****Tabasco 3018K10****Lyssy 107/130**

Collier Farms 83/8

Red Ryder 8035

Black Bayou 1071/3*VFF MS 4/2*****EMS Amazing Ace 630**

Bradley Circle J 38/6

Bandito 958/2

****Sensual Appeal 403**

Dam of Lot 34 A

Lyssy 107/130Sire of Lot 34A **CF Unico**Sire of Lot 34A **NG Bedrock 622L8**

Maverick is known for his great maternal traits and highly productive donors. This proven matriarch going back to Red Ryder and Sensual Appeal delivers the design and conformational characteristics you want with a big \$M in the top 10% and \$T in the top 25%. She was scurred polled and when mated to super sires like Unico and Bedrock, the value of a potential polled herd sire or donor dam is undeniable. *Embryos located at TransOva Genetics in Bryan, TX.*

34B**PICK OF 3 EMBRYOS**

Dam: CF 614/0

3J CATTLE COMPANY**Dam:** CF 614/0 LH C1146661 DNA 101819025101 PV**34A – Sire:** CF Unico 219/1 LE C1156916 DNA 9518022515 PV POLLED**34A – Sire:** NG Bedrock 622L8 LE C1184269 DNA NE03228277 PV POLLED****Tabasco 3018K10******Red Tiger 9075****CF Riptide 875/3**

Jungle Spice 786

CF Raquel 933/9***Logan 62M27****CF 614/0**

Jungle Whisper 49/1

Collier Farms CF 341/0

Classic Crimson 6/6

CF Crimson Legacy 701/3****Evans Ranch 05-15**

Triple P P14/3

Contender P16/8

Triple P Ranch 22/5

Dam of Lot 34 B

CF 614/0Sire of Lot 34B **CF Unico**Sire of Lot 34B **NG Bedrock 622L8**

The only thing better than a Riptide daughter is one out of Crimson Legacy. This tremendous combination of 2 of the best from the Collier Farms herd created an exceptional donor in use at 3J Cattle. They put the polled performance sires Unico and Bedrock to use on this superior individual to create some exclusive matings. Progeny from either sire will have \$T and \$M in the top 20% of breed or higher.

35A&B**A: 4 IVF EMBRYOS****B: 4 IVF EMBRYOS****WOOLMAN FARMS**

CF Infinite Mirage 319 LE x RB Lady Eloise 202/3

A&B Sire: CF Infinite Mirage 319 LE C1177289 DNA 102120045915 PV**A&B Dam:** RB Lady Eloise 202/3 LE C1189456 DNA 122021050753 PV

Sire of Lot 35 A&B

CF Infinite Mirage****Infinity 120/96******Red Sugar 104/93****CF Infinite Mirage 319 LE******Vanna 5660******Oasis 655******Cavalier 19/5**

CF Resolution 520/9

****Sex Life 388****RB Lady Eloise 202/3**

WB Solution 67/6

2G Sweet Serenity 1321

Diamond Maiden 1931/4

CF Riptide 875/3

CF Sweet Clementine 437/7

Dam of Lot 35 A&B

RB Lady Eloise

Genetic excellence and consistency run deep in this tremendous embryo offering of Infinite Mirage and Lady Eloise. Infinite Mirage is the pinnacle of classic Beefmaster genetics with Infinity and Oasis seated in the forefront while Lady Eloise provides even more legendary greats on bottom to ensure your genetic predictability. Think about the cow families stacked up close in the pedigree of the coming progeny. Oasis, Diamond Maiden, Clementine, Vanna, Raquel, and Bengal Baby are all right where you need them.



Lot 36: JT DAYBREAK SEMEN

JT Daybreak JT4921 RE
POLLED
 BBU#: **C1160221**
 Color: **Red**
 DNA: **NE02384937 PV**
 DOB: **11/20/21**

36A:
1 Straw with
Option to Take
Both Straws

36B:
1 Straw Semen

DAYBREAK PARTNERSHIP



A short 2 years ago, at the BBU convention, a new super sire made his debut to the industry. On that landmark day, semen sale records were shattered and a new star was born as JT Daybreak. Since the 2023 convention, Daybreak semen and now progeny have gone on to break even more records for sale price and averages while demand for his product continues to remain stronger than ever. Daybreak delivers an unrivaled profile of attributes needed in today's industry making him what some would refer to as "lightning in a bottle." This heavy muscled, attractively designed bull is low birth weight, high growth, big scanning, and high EPD'd all while being homozygous Polled and homozygous Red. His widely renowned pedigree delivers highly proven cow families and performance sires, yet is diverse enough from a large portion of current bloodlines to use him as the polled performance outcross of choice. If you haven't become involved with Daybreak to date, take this opportunity to put his genetic excellence and marketability to work in your program. This will be the only two straws offered in the remainder of 2025. In addition, the Daybreak partners have come together to offer a unique package of embryos featuring one elite mating by Daybreak and one of their premiere donors. The donors in this package include daughters of legends like Wicked Witch, Vivid Oasis, and Madam Secretary while also featuring the homozygous polled donor Miss Diamond. The package includes sexed female and conventional embryos giving you a chance at a donor prospect or herd sire. This may be the embryo package of the year!

CJ's Justice J100
CJ's Game Day 28/16
 *CHRK Milky Way 1863X
 CF Masterpiece 685
CJ Heartbreak 12/17
 *CJ's Diamond Of Soul 509

Black Gold 27
 CJ's Dark Secret 01-8
 CHRK Genesis 1500T
 Channarock 721T10
 L2 Captain Jack 43/07
 **Oasis 655
 **CJ's Soul Man 168
 Miss CJ 254

																INDIVIDUAL PERFORMANCE RECORDS							
EXPECTED PROGENY DIFFERENCES										ULTRASOUND EPDs				INDEXES			BW	WW	YW	REA	%IMF	RIB FT	RUMP FT
	CED	BW	WW	YW	MILK	MCE	MWWT	SC	STAY	AFC	REA	% IMF	RIBFAT	ST	\$M	RATIO	97	104	107	103	110	111	117
EPD	3.16	0.5	55	78	12	2.21	40.15	1.21	2.04	-0.97	0.46	0.43	-0.002	155.04	35.94	CONTEMP	6	3	3	3	3	3	3
ACC	0.36	0.78	0.71	0.78	0.19	0.19	0.00	0.42	0.20	0.19	0.80	0.84	0.79			ADJ TRAIT	70	744	1366	16.58	4.04	0.26	0.48



PACKAGE OF 4 EMBRYOS SIRE: JT DAYBREAK 4921

DAYBREAK PARTNERSHIP POLLED



1 Sexed Heifer Embryo

Dam: **JT Timeless JT1921 RE**
 POLLED • BBU#: **C1149184**



1 IVF Embryo

Dam: **H Bar Miss Diamond 2228 LE**
 POLLED • BBU#: **C1173662**



1 Reverse Sort Female Embryo

Dam: **Collier Farms 171/2 LE**
 BBU#: **C1185321**



1 Female Sexed Embryo

Dam: **Collier Farms 541/8 LE**
 BBU#: **C1106524**



EMBRYOS

Dam: Wicked Witch 7/04

J&T FARM

37A-C Dam: Wicked Witch 7/04 LE
C913639 DNA NE02384937 PV

37A - EMBRYOS

Sire: JT Daybreak 4921 RE
C1160221 DNA NE02384937 PV
POLLED

37B - EMBRYOS

Sire: **CF Sugar Britches 040 LE
C940465 DNA US400355365 PV

37C - EMBRYOS

Sire: CJ's Game Day 28/16 LE
C1082272 DNA 123015084104 DV

****Cavalier 19/5**
Wicked Witch 7/04
Witchy Woman 43/01
****Spartacus 86/653**
****Lazy M 1-5/5**
****Synergy 84/95**
****Vanna 2000**
****Gladiator 8/36**
****Dreamlady 2C9-77**
****Ranger's Pride 815/9**
****Kentucky Princess 9039**
****Red Sugar 104/93**
****Prissy Lady 117/93**
****Phantom Warrior 3/254**
****Madam X 3/293**

When considering the top donors in the breed of all time, the great Wicked Witch definitely makes the list. This highly productive donor was put to work in the J&T Farms program over a decade ago and her progeny and clones have gone on to be some of the most sought after cattle in the industry. Here is your chance to get your choice of Wicked Witch embryos by 3 elite semen sires delivering polled performance genetics.



Dam of Lot 37 A-C
Wicked Witch



Sire of Lot 37A
JT Daybreak



Sire of Lot 37B
****CF Sugar Britches**



Sire of Lot 37C
CJ's Game Day



3 STRAWS **CF SUGAR BRITCHES SEMEN J&T FARM

Wicked Witch 7/04

EXPECTED PROGENY DIFFERENCES																INDIVIDUAL PERFORMANCE RECORDS									
	CED	BW	WW	YW	MILK	MCE	MWWT	SC	STAY	AFC	REA	% IMF	RIBFAT	ST	\$M	RATIO	BW	WW	YW	REA	%IMF	RIB FT	RUMP FT		
EPD	1.94	1.6	19	22	8	2.80	17.72	-0.19	3.49	0.51	-0.27	-0.05	-0.020	52.00	11.88	CONTEMP	*								
ACC	0.37	0.86	0.81	0.75	0.62	0.25	0.00	0.58	0.43	0.25	0.75	0.78	0.74			ADJ TRAIT									



SEMEN - CJ'S BERNARD 1724 3 STRAWS FEMALE SEXED PACKAGE

HIATT DIAMOND H POLLED

CJ's Bernard 1724 LE
BBU#: **C1082445**
Color: **Black Mottle Underline**
DNA: **123015084125 PV**
DOB: **4/26/17**

**SELLING: 3 Units, Buyer
Takes All or Part. Each Unit
Includes 1 Certificate.**

**Additional certificates will be
available for \$150 each to the
buyer of the semen**

Bonfire 8038
***EMS Ring Of Fire 130**
EMS Color Me Sugar 811
CJ Moneymaker 707
Miss CJ 1014
Miss CJ 737
****Black Bayou 1071/3**
***EMS Amazing Ace 630**
****L2 Captain Sugar 12/02**
Magic Colors CL022
****Infinity 120/96**
CJ's Enchantress of Soul 444
CJ's Motown 412
CJ's Dark Secret 01-8



CJ's Bernard 1724

One of the leaders in high caliber production at both Hiatt Diamond H and NextGen is CJ's Bernard. This extremely long made bull delivers the looks and conformational correctness needed in cattle while delivering strong performance in a Homozygous Polled and Homozygous Black package. Selling 3 straws of female sexed semen. Buyer can take all or part.

																INDIVIDUAL PERFORMANCE RECORDS							
EXPECTED PROGENY DIFFERENCES										ULTRASOUND EPDs				INDEXES			BW	WW	YW	REA	%IMF	RIB FT	RUMP FT
	CED	BW	WW	YW	MILK	MCE	MWWT	SC	STAY	AFC	REA	% IMF	RIBFAT	ST	\$M	RATIO	99	112	110	105	111	150	121
EPD	3.92	0.1	27	43	11	2.42	24.10	0.18	-1.25	-0.74	0.04	0.29	-0.002	91.69	14.87	CONTEMP	3	3	3	3	3	3	3
ACC	0.38	0.88	0.85	0.87	0.45	0.22	0.00	0.76	0.24	0.22	0.88	0.90	0.87			ADJ TRAIT	78	693	1069	11.67	3.590	0.26	0.340

Lot 39: CF PREMIER SEMEN



**50 Packages
Total**

**5 Straw
Packages
\$1,000**



SEMEN – CF PREMIER 467/3

**PREMIER PARTNERS
POLLED**

CF Premier 467/3 LE • BBU#: C1181942 • DOB: 3/4/23
Color: Red • DNA: 111422033092 PV

There's a new Homozygous Polled sheriff in town and his name is CF Premier. It was inevitable that Collier Farms would create a traditionally bred polled bull that would line up the polled genetics, great looks, and elite cow families and do it in a homozygous polled and red package. This tremendously big boned and deep sided herd sire delivers the impeccable front end present in both Bebe and First Lady while doubling down on power and growth found in Solution, Riptide and Bullet Proof. Premier was the high selling bull at the 2025 Advantage Plus Bull Sale and acquired by a strategic partnership of Rocking RB, Schneider Brothers, and V-Seven Beefmasters. Premier was jumped a few times at Elgin then put straight out to work in March where he continued to shine as a dominant and vigorous natural service sire. Today, for the first and only time in 2025, the Premier partners are offering a limited number of 5 straw packages. Only 50 packages will be sold this season and quantities are very low after that sells, so don't delay. The partners are offering these packages on a first come first serve basis beginning at convention. This is a highly marketable sire that delivers the polled trait you want without sacrificing looks, pedigree, or performance ... get on board now!

5 straw package for \$1,000. AI signatures are \$100 each with a one year from sale date price lock for original buyers.

Semen was collected and located at Elgin Breeding Service.

WB Solution 67/6
CF Unico 219/1
Collier CF BeBe 795/7
Bullet Proof 864
First Lady 27-10
Jazzie 293L55

CF Dream Catcher 914
**Logan's Bengal Baby 134/0
CF Riptide 875/3
Sugar Shana 645-6
CJ's Bandelero 960
**Oasis 655
**Black Magic 120/97
*Silk Stockings 293H11

																INDIVIDUAL PERFORMANCE RECORDS							
EXPECTED PROGENY DIFFERENCES										ULTRASOUND EPDs				INDEXES			BW	WW	YW	REA	%IMF	RIB FT	RUMP FT
	CED	BW	WW	YW	MILK	MCE	MWWT	SC	STAY	AFC	REA	%IMF	RIBFAT	ST	\$M	RATIO	101	109	101				
EPD	2.86	1.5	42	57	6	3.05	27.07	0.89	-1.78	-0.98	0.06	-0.15	-0.035	109.13	22.59	CONTEMP	2	2	2				
ACC	0.29	0.45	0.45	0.49	0.19	0.17	0.00	0.30	0.18	0.17	0.41	0.44	0.39			ADJ TRAIT	88	694	1069				

40

SEMEN - SEXED UNICO 3 STRAWS - BUYER TAKES ALL OR PART

PRO VENTURES POLLED

CF Unico 291/1 LE
BBU#: **C1156916**
DOB: **1/15/21** • Color: **Dark Red**
DNA: **9518022515 PV**

SELLING: 3 Units, Buyer Takes All or Part. Each Unit Includes 1 Certificate.

AI certificates are \$100 each for original buyer and \$200 each for secondary buyers.

CF Dream Catcher 914
WB Solution 67/6
**Logan's Bengal Baby 134/0
CF Riptide 875/3
Collier CF Bebe 795/7
Sugar Shana 645-6

**L2 Captain Sugar 12/02
**Oasis 655
**Logan 62M27
**Bengal Baby 93/05
**Tabasco 3018K10
*CF Raquel 933/9
**Black Jack 21
Little V 7-98



Since his introduction, Unico has been one of the most widely accepted and used bull throughout the Beefmaster industry due to his versatility and completeness. From the show ring to the sale ring, Unico progeny continue to find themselves in the winner's circle. This dark red POLLED super sire has already created national champion females and high caliber semen sires at only 4 years of age. Now, owners ProVentures are giving you a shot at a super exclusive offering of 3 female sexed semen straws. This has proven to work well for IVF use and could be the tool you've been needing in your ET program.

																INDIVIDUAL PERFORMANCE RECORDS							
EXPECTED PROGENY DIFFERENCES									ULTRASOUND EPDs					INDEXES			BW	WW	YW	REA	%IMF	RIB FT	RUMP FT
	CED	BW	WW	YW	MILK	MCE	MWWT	SC	STAY	AFC	REA	% IMF	RIBFAT	ST	SM	RATIO	101	121	*	*	*	*	
EPD	0.53	3.2	59	69	6	2.59	35.75	1.29	-2.75	-0.79	-0.04	-0.13	-0.033	131.61	38.02	CONTEMP	2	2	1	1	1	1	
ACC	0.36	0.79	0.74	0.76	0.21	0.19	0.00	0.41	0.19	0.19	0.75	0.80	0.74			ADJ TRAIT	79	823	1072	11.85	3.230	0.27	0.380

41

SEMEN PACKAGE MOULES WALKING M

CJ King 2303 RH
BBU#: **C1182343**
DOB: **2/20/23**
Color: **Red • POLLED**
DNA: **NE02965040 PV**

NG Hall of Fame L968
BBU#: **C1194466**
DOB: **9/19/23**
Color: **Red • POLLED**
DNA: **NE04487396 PV**

CJ's Game Day 28/16 LE
BBU#: **C1082272**
DOB: **10/18/16**
Color: **Black • POLLED**
DNA: **123015084104 DV**

CF Gulf Stream 273/7 LH
BBU#: **C1092791**
DOB: **2/27/17**
Color: **Red**
DNA: **US400772479 PV**

If you are looking to get into the embryo making business and want to fast track your program with some of the breeds most elite herdsires, then this semen package is the one for you. Walking M cattle had the idea to offer a special semen package at convention with one straw on each top bull from their private reserve.

Imagine what these sires can do for any program today.



Lot 41 **CJ King**



Lot 41 **CJ's Game Day**



Lot 41 **NG Hall of Fame L968**



Lot 41 **CJ Gulf Stream**

42

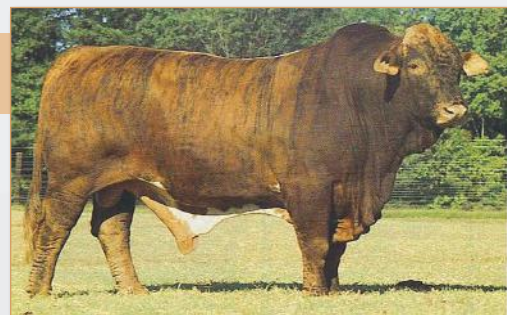
SEMEN - **PAINTED TIGER 3 STRAWS

7C ANDERSON

Painted Tiger 3-390 LH
BBU#: **C238565**
Color: **Brindle**
DNA: **US3000923**
DOB: **11/4/83**

**Robert E Lee 8/092
****Painted Warrior 0026**
**Barfield 8/123
McCullars 116
****Dunkin Farms 1-126**
**Volunteer 66

**Crimson Warrior 4/20
Barfield 5087
**Warpaint 0/19
Z6942



SELLING: 3 Units, Buyer Takes All or Part. Each Unit Includes 1 Certificate.

Additional AI certificates are available on open market.

The legend himself is available here in this 3 straw package of Painted Tiger semen. These straws have been proven to work in ET programs and are from the original collection done by Charlie Dunkin. These have only been moved one time and have been kept safe at Elgin Breeding Service since the early 90's. There is very little left in existence, so don't delay.

																INDIVIDUAL PERFORMANCE RECORDS							
EXPECTED PROGENY DIFFERENCES									ULTRASOUND EPDs					INDEXES			BW	WW	YW	REA	%IMF	RIB FT	RUMP FT
	CED	BW	WW	YW	MILK	MCE	MWWT	SC	STAY	AFC	REA	% IMF	RIBFAT	ST	SM	RATIO	95.3	97					
EPD	0.32	2.2	15	28	15	1.84	22.36	0.37	-5.55	-0.68	-0.31	-0.44	-0.034	56.05	8.86	CONTEMP	23	11					
ACC	0.42	0.99	0.98	0.97	0.95	0.30	0.00	0.87	0.74	0.30	0.95	0.96	0.95			ADJ TRAIT	83	498					



TERMS & CONDITIONS OF SALE



BIDDING: Each animal will be sold to the highest bidder without reserve.

BIDDING DISPUTE: The Auctioneer in charge will settle any dispute as to bids, and his decision on such matters shall be final.

TERMS: Terms of the sale are cash due upon sale, unless prior credit arrangements for the sale have been agreed upon in writing between the Buyer and Seller, in which event, the terms of the written credit arrangement between the Buyer and Seller for the sale shall prevail.

The failure of a member buyer to pay the appropriate party the sale amounts when due may constitute a cause for exclusion from BBU pursuant to Article I, section 9 of the By Laws of BBU.

PURCHASER'S RISK: Each animal becomes the risk of the purchaser as soon as the auctioneer declares it sold.

CERTIFICATE OF BREEDING AND/OR TRANSFERS: All required paperwork will be transferred to the buyer at the seller's expense, upon settlement.

HEALTH: All animals will have appropriate certificates of veterinary inspection for travel to the sale site and will to the best of the seller's knowledge be eligible for interstate shipment, however, buyers need to be aware of their individual resident state's requirements for shipment of cattle. Any and all testing will have been completed within thirty (30) days of the sale date.

ANNOUNCEMENTS: If any changes in information of any kind are announced from the auction box, said announcements shall take precedence.

BREEDING GUARANTEES:

1) The seller guarantees that all animals are breeders, with the exception of: (a) calves under 12 months of age at the time of the sale; (b) animals shown after the sale has occurred (in such cases, the breeding guarantees, if any, will be those guarantees as are agreed upon between the seller and the buyer); (c) animals who suffer injury or disease following the sale; (d) animals administered any super ovulation drug or growth hormone after purchase; and, (e) animals subjected to negligence by or willful misconduct on the part of the buyer.

2) Females: (a) open females are so guaranteed; (b) any female is considered to be a breeder if she is certified to be pregnant by a licensed veterinarian at the time of sale and/or has a nursing calf at side; and, (c) safe in calf females have been examined by a veterinarian and so guaranteed.

3) Bulls eighteen (18) months or older are guaranteed by the seller to have passed a breeding soundness exam (BSE) and have been certified a satisfactory potential breeder by a licensed veterinarian within 60 days prior to the sale.

4) If within one-hundred twenty (120) days from the date of sale, the bull has failed to pass a BSE certified by a licensed veterinarian, buyer must send seller written notification of the failure of the test within one-hundred twenty (120) days from the date of sale and include the BSE test results. Within sixty (60) days after seller's notification of the failed BSE test, buyer and seller shall identify a mutually agreeable licensed veterinarian or technician certified by a licensed veterinarian to perform another BSE on the bull at the buyer's expense. The results of the test shall be deemed final and conclusive of this matter and binding on buyer and seller. If, in the opinion of said veterinarian or technician, the bull is unable to pass a BSE and be confirmed a satisfactory potential breeder, he shall so certify in writing to the seller and the buyer which shall include the official from used by the Society of Theriogenology or the official BBU BSE form. In such event the buyer may return the bull to the farm of seller, provided the bull is in good condition and in compliance with the health requirements of the seller's state, for a refund of the full purchase price. The acceptance of the refund of the full purchase price shall in any case be deemed full satisfaction and settlement of the matter. The seller and buyer shall bear equally all reasonable and necessary transportation expenses that are incurred in returning the animal to seller. **Unless otherwise agreed by the buyer and the seller, the seller makes no guarantees with respect to the ability to freeze semen.**

PRIVILEGES OF RETURN OR ADJUSTMENT OPTIONS:

1) With the exception of any applicable transportation expenses described herein, a seller shall never be liable to a buyer for an amount greater than the original selling price of any animal sold under these Sales Terms and Conditions.

2) Unless otherwise stated, all claims for adjustment or refund must be made in writing to the seller within 180 days following the sale of the animal in question.

3) If an animal is claimed to be a non-breeder, the animal may be returned to the seller if it is in

a good condition and complies with the health requirements of the seller's state. At the option of the buyer, the seller may issue a credit to the buyer for use in a future purchase or provide an animal of equal value subject to the approval of buyer. If the buyer exercises either such option, the claim shall be deemed fully and satisfactorily resolved. However, in the event that the buyer requests a refund of the purchase price, the seller may, at its option, either issue a refund of the full purchase price or, shall have 180 days from the date the animal is returned to the seller's farm to conduct a trial to demonstrate the returned animal is a breeder. Refund of the full purchase price or demonstrated proof that the animal is a breeder during the test trial shall be deemed full satisfaction and settlement of the claim. Any expense incurred for transporting an animal claimed to be a non-breeder will be the responsibility of the buyer, except that the seller will be responsible for transportation costs in excess of the distance between the buyer's farm and the location where the sale took place. If the seller proves the animal to be a breeder, it will be the obligation of the buyer to take delivery of the animal and pay all transportation expenses.

4) If an animal is sold and subsequently becomes ineligible for registration under the rules of BBU for reasons other than incorrect parentage, the seller must make a satisfactory adjustment on the purchase price to the buyer, or at the option of the seller, refund the purchase price upon the return of the animal to the farm of the seller.

5) If an animal (including the offspring of a pregnant recipient) is sold and through parentage verification is proven to have incorrect parentage, as represented by the animal's certificate of registration, and for which correct parentage can be determined, the seller is obligated to make a satisfactory adjustment on the purchase price to the buyer or, at the seller's option, refund the purchase price upon the return of the animal to the farm of the seller. Any claim for adjustment or refund under this paragraph must be made in writing to the seller on or before the first anniversary of the date of the sale.

6) Unless stated otherwise, all transportation expenses incurred will be the responsibility of the buyer, except that the seller will be responsible for transportation costs in excess of the distance between the buyer's farm and the location where the sale took place.

MISCELLANEOUS:

1) The above terms and conditions of sale constitute a contract between the buyer and the seller and are equally binding upon both parties. Each sale or resale of an animal constitutes a separate transaction.

2) Neither BBU nor any director, officer, employee or representative of BBU or any of its related entities shall be liable in any way with respect to a transaction conducted under these Sales Terms and Conditions; nor shall BBU, its directors, officers, employees or representatives be responsible in any way for enforcing the terms and conditions of any agreement between a buyer and a seller. Each buyer and seller agree to hold BBU, its directors, officers, employees, representatives and related entities harmless from all damages, expenses, claims, losses and other liabilities associated with a transaction conducted under these Suggested Sales Terms and Conditions.

3) No sponsor, sale manager, or other person connected with the management of a sale shall be liable in any way with respect to transactions conducted under these Sales Terms and Conditions.

4) These sale terms and conditions and all rights, obligations and duties arising hereunder and all disputes arising hereunder will be construed in accordance with, and governed by, the laws of the state in which the sale occurs, without giving effect to such state's choice of law rules.

5) UNLESS OTHERWISE EXPRESSLY STATED IN THESE SALE TERMS AND CONDITIONS OR ANY OTHER WRITTEN AGREEMENT BETWEEN THE PARTIES RELATING TO THE SALE OR BEEFMASTER, BEEFMASTER ADVANCER, E6 OR UPGRADING CATTLE UNDER THESE SALE TERMS AND CONDITIONS, SELLER MAKES NO OTHER WARRANTIES, EXPRESS OR IMPLIED, INCLUDING ANY IMPLIED WARRANTY OF MERCHANTABILITY OR FITNESS FOR A PARTICULAR PURPOSE, EVEN IF SUCH PURPOSE IS KNOWN TO THE PARTIES. THE REMEDIES PROVIDED IN THESE SALE TERMS AND CONDITIONS ARE THE EXCLUSIVE REMEDIES OF THE BUYER, OR ANY PARTY CLAIMING THROUGH THE BUYER, AND UNDER NO CIRCUMSTANCES WILL THE SELLER BE LIABLE FOR ANY INCIDENTAL, INDIRECT, SPECIAL, CONSEQUENTIAL, PUNITIVE OR EXEMPLARY DAMAGES UNDER ANY INDEMNITY PROVISION OR OTHERWISE.

Strategy Cattle, LLC



INITIATE YOUR STRATEGY

ONLINE BEEFMASTER SEMEN STORE

Obtain Breed Leading Genetics with a simple click.
Featuring these Premier Sires & More

**BOLD SALUTATIONS, BRAVADO, BROCK, BROCK'S MVP, BURT REYNOLDS,
CLASSIC NUECES, CODIGO, CORTEZ, CREEDMOOR, DAYBREAK, DOUGHBOY, EL GUAPO,
EL PATRON, FIREBALL, FUSION, GULF STREAM, DOUGHBOY, HALL OF FAME, HIGH TIDE,
HYPERION, INFINITE MIRAGE, KING, KINGSTON, KRAKEN, LOGAN, LEONIDAS,
MAGNIFICO, MAGNITUDE, MARBLE, MONARCH, NEW DIMENSION, PICASSO,
POLLED PLAYBOY, PREMIER, RED BULL 511, REPUBLIC, RESOLUTION, SON OF A GUN,
SUGAR MAGA, TABASCO, TIDAL WAVE, TRINITY, TROUBADOUR, UNICO, VISION**

www.strategycattle.com

A full service cattle Marketing, Media, and Management firm

• sales management • genetic consulting • private treaty sales • ranch planning

Trey Scherer • (979) 203-1656 • info@strategycattle.com