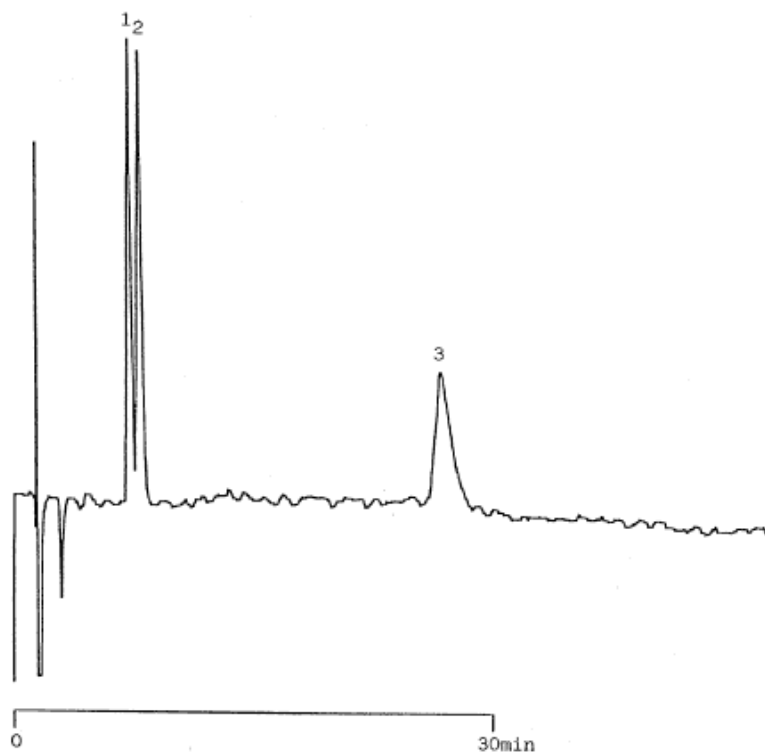


# InertSearch™ for LC

Inertsil® Applications

## Cation surfactants

Data No. LA352-0000



Column : Inertsil C8  
5 $\mu$ m  
150  $\times$  4.6 mmI.D.

Column Cat. No. : 5020-01201

Eluent : CH<sub>3</sub>CN/0.1M NaClO<sub>4</sub>=60/40

Flow rate : 1.0 mL/min.

Col. Temp. : 40°C

Detection : RI

Injection Vol. :

Sample :

Solutes : 1. Undecyl ammonium chloride  
2. Lauryl pyridinium chloride  
3. Cetyl pyridinium chloride