



NK DB•FW

127 S Broadway | Green Bay, WI 54303 | Phone (800) 236-7303 | Fax (920) 239-8890 | Email orders@duboisfw.com

www.dbformalwear.com

DB•FW

Tuxedos and Suits

Black	pages #9-12
White	pages #13-14
Gray	pages #17-22
Blue / Navy	pages #25-30
Burgundy / Brown / Tan	pages #31-33
Cinnamon / Hunter	pages #34-35
Specialty	pages #38-47

Essentials

Shirts	pages #50-51
Pants	page #52
Shoes	page #53
Jewelry	page #53
Belts	page #53

Accessories

by Collection

Portofino by Larr Brio	pages #54-57	Blossom Floral by Larr Brio	page #663
Satin by Malibu Tie, Inc.	pages #58-59	Camouflage by Mossy Oak	page #64
Tweed by Suits America	page #60	Destination by Santana	page #64
Colby by Larr Brio	page #61	Metallics by Larr Brio	page #65
Simply Solid by Larr Brio	page #62	Tonal Dot by Larr Brio	page #65

Accessories

by Color

Pink / Red / Burgundy	pages #66-67	Purple / Lapis	pages #78-79
Coral / Orange	pages #68-69	Magenta / Fuchsia / Plum	pages #80-81
Green / Clover / Celadon	pages #70-71	White / Yellow / Gold	pages #82-83
Sage / Olive / Hunter	pages #72-73	Ivory / Beige / Brown	pages #84-85
Turquoise / Aqua	pages #74-75	Gray / Pewter / Silver	page #86
Dark Blue / Royal Blue	page #76	Black	page #87
Cornflower / Slate / Navy	page #77		

Tuxedo Index

Style #	Description	Color	Page #	Buttons	Lapel	Vent	Pocket	Fit
111	Couture 1910 Houston	Steel Gray	17	2	N	S	F	S
123	Allure Men Ridge	Denim Blue	25	2	N	S	F	S
125	Ike Evening Archer	Brown	32	2	N	S	F	S
126	MOD Lorenzo	Cinnamon	34	2	N	S	F	S
128	Ike Behar Luka	Hunter Green	35	2	N	S	F	S
133	Ike Behar Lane	Dusk Blue	27	1	P	S	B	S
143	Ike Behar Blake	Navy w/Black Lapel	30	1	P	S	B	S
144	Larr Brio Metro	Black	10	2	N	S	B	S
151	Kenneth Cole Lenox	Dusk Blue	20	2	N	S	B	S
153	Ike Behar Sebastian	Navy	26	2	N	S	B	S
186	Ike Behar Marbella	Burgundy w/Black Lapel	31	1	P	S	B	S
211	Couture 1910 Barrow	Steel Gray	17	2	N	S	B	S
243	Ike Behar Collin	Navy	29	2	N	S	B	S
262	Ike Behar Ashton	Black	11	1	P	S	B	S
280	Ike Behar Aragon	White	13	2	N	S	F	S
333	David Major - Stretch	French Blue	28	2	N	S	F	S
351	David Major - Stretch	Light Gray	19	2	N	S	F	S
355	David Major - Stretch	Tan	33	2	N	S	F	S
362	Allure Men Lexington	Black	9	2	N	S	F	S
380	Ike Behar Jason	White w/Black Lapel	14	1	S	S	B	S
391	Jean Yves Ceremonia	Steel Gray	21	2	N	N	B	M
512	FCG Cutaway	Black	12	1	P	V	-	C
521	Lord West Cutaway	Charcoal	22	1	P	V	-	C
951	MOD Starlight Lame'	Silver	41	1	S	S	B	S
952	MOD Equinox	Black Velvet	38	1	S	S	B	S
953	MOD Starlight Lame'	Royal Blue	39	1	S	S	B	S
954	Allure Men Venice	Dusty Rose Velvet	43	1	S	S	F	S
956	Ike Evening Carter	Red	44	1	P	S	B	S
957	Allure Men Venice	Aubergine Velvet	42	1	S	S	F	S
959	MOD Metallic Camo	Black & Gold	46	1	S	S	B	S
961	MOD Starlight Lame'	Stone	40	1	S	S	B	S
963	MOD Hendrix	Abstract Multi-Color	45	2	N	S	F	S
969	MOD Ryan	Floral Multi-Color	47	2	N	S	F	S

LAPELS	VENT	POCKET	FIT
N - Notch	V - Vented	B - Besom	S - Slim
S - Shawl	N - Non-vented	F - Flap	M - Modern Essentials
P - Peak	S - Side Vented		C - Contemporary

Accessories Index

Collection	Manufacturer	Page #	Vest Buttons	Vest	Windsor Tie	Bow Tie	Pocket Square
Portofino	Larr Brio	54-57	5	x	x	x	x
Satin	Malibu Tie, Inc.	58-59	6	x	x	x	x
Tweed	Suits America	60	4	x	x	x	x
Colby	Larr Brio	61	n/a	n/a	x	x	x
Simply Solid (Ties)	Larr Brio	62	n/a	n/a	x	n/a	x
Simply Solid (Vests)	Larr Brio	62	4	x	x	x	x
Blossom Floral	Larr Brio	63	n/a	n/a	x	x	x
Camouflage	Mossy Oak	64	5	x	x	x	x
Destination	Santana	64	5	x	x	x	x
Metallics	Larr Brio	65	4	x	x	x	x
Tonal Dot	Larr Brio	65	n/a	n/a	x	x	x

Tuxedo Index

Arranged by Color and Style Number

BLACK



#144 page #10



#262 page #11



#362 page #9



#512 page #12



#280 page #13



#380 page #14

GRAY



#111 page #17



#211 page #18



#151 page #20



#351 page #19



#391 page #21



#521 page #22

NAVY / BLUE



#123 page #25



#133 page #27



#143 page #30



#153 page #26



#243 page #29



#333 page #28

BURGUNDY



#186 page #31

BROWN



#125 page #32

CINNAMON



#126 page #34

GREEN



#128 page #35

TAN



#355 page #33

SPECIALTY



#951 page #41



#952 page #38



#953 page #39



#954 page #43



#956 page #44



#957 page #42



#959 page #46



#961 page #40



#963 page #45



#969 page #47

S SLIM / TRIM FIT

Details:

- Slim lapel
- Higher armhole
- Narrow sleeve
- Tapered body
- Shorter length
- Usually paired with slim fit pant

Coat styles with this fit:

111 - 1910 Couture Houston	951 - MOD Starlight Lame'
133 - Ike Behar Lane	952 - MOD Equinox
143 - Ike Behar Blake Navy	953 - MOD Starlight Lame'
151 - Kenneth Cole Lenox	954 - Allure Men Venice
153 - Ike Behar Sebastian	956 - Ike Evening Carter
186 - Ike Behar Marbella	957 - Allure Men Venice
211 - 1910 Couture Barrow	959 - MOD Metallic Camo
243 - Ike Behar Collin Navy	963 - MOD Hendrix Abstract
262 - Ike Behar Ashton	969 - MOD Ryan Floral
280 - FCG Aragon	
362 - Allure Men Lexington	
380 - Ike Behar Jason	

Coat styles with stretch material:

123 - Allure Men Ridge
125 - Ike Evening Archer
126 - MOD Lorenzo
128 - Ike Behar Luka
144 - Larr Brio Metro
333 - David Major French Blue
351 - David Major Light Gray
355 - David Major Tan

M MODERN FIT

Details:

- Softer shoulder
- Narrowed lapel
- Smaller top collar
- Trimmed down waist
- Non-vented back
- Shorter Length
- Usually paired with flat front pant

Coat styles with this fit:

391 - Jean Yves Gray Suit

C CONTEMPORARY FIT

Details:

- Designed for comfort
- Shoulders are wider
- Larger armholes
- Sleeves are fuller
- Paired with flat front or pleated pant

Coat styles with this fit:

512 - Lord West Cutaway Black
521 - Chaps, Ralph Lauren Cutaway

Black



#362 Allure Men | Lexington
page #9



#144 MOD | Metro
page #10



#262 Ike Behar | Ashton
page #11



#512 Lord West | Cutaway
page #12

White



#280 Ike Behar | Aragon
page #13



#380 Ike Behar | Jason
page #14



PHOTOS BY:
LARISSA MARIE PHOTOGRAPHY

Allure Men

Lexington

#362

Allure Men | Lexington Suit

Black Wool
Self Faced Notch Lapel
Slim Fit
2 Button Front
Vented

Shown with:

Pants #362 - Slim Fit Stretch, Flat Front
Vest #V362 - Black Allure 5 Buttons
Shirt #WLF - White Laydown Collar, Fitted
or Shirt #410 - White Laydown Collar, Reg. Fit
Tie #F526 - Fino Claret Satin Bow
Pocket Square #H526 - Fino Claret Satin



Belt: Black



MOD

Metra

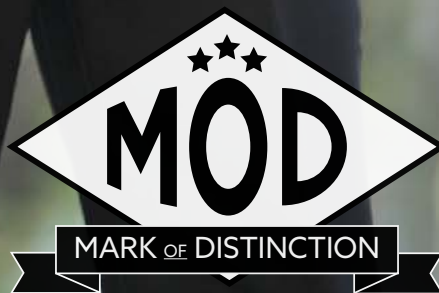
#144

MOD | Metro

Slim Fit Stretch Material
Satin Notch Lapel
Slim Fit
2 Button Front
Vented

Shown with:

Pants #144 - Slim Fit Stretch, Flat Front, No Side Stripe
Shirt #WLF - White Laydown Collar, Fitted
or Shirt #410 - White Laydown Collar, Reg. Fit
Vest #V144 - Black 4 Button
Tie #B502 - Black Satin Bow
Pocket Square #H500 - White Satin



Ike Behar

Ashton

#262

Ike Behar | Ashton

Black Light Weight Wool
Satin Edge Peak Lapel
Slim Fit
1 Button Front
Vented
Stretch Armholes

Shown with:

Pants #144 - Slim Fit Stretch, Flat Front No Side Stripe
Shirt #WLF - White Laydown Collar, Fitted
or Shirt #410 - White Laydown Collar, Reg. Fit
Vest #V144 - Black Ike Behar
Tie #B502 - Black Satin Bow
Pocket Square #H500 - White Satin

Also Available:

Pants #244 - Slim Fit, Flat Front, Side Stripe

IKE EVENING
BY IKE BEHAR

S SLIM
FIT

(800) 236-7303

Lord West

Cutaway

#512

Lord West | Cutaway

Black Cutaway
Contemporary Fit
Self Peak Lapel
1 Button Front
Vented

Shown with:

Pants #121 - Gray Stripe, Classic Fit, Two Pleats,
No Side Stripe
Shirt #310 - White Wingtip Collar, Microfiber
Vest and Tie - Not Available



**CONTEMPORARY
FIT**

Ike Behar

Aragon

#280

Ike Behar | Aragon Suit

White
Self Faced Notch Lapel
Slim Fit
2 Button Front
Vented

Shown with:

Pants #280 - Slim Fit, Flat Front Suit
Shirt #WLF - White Laydown Collar, Fitted
or Shirt #410 - White Laydown Collar, Reg. Fit
Vest #V280 - White 4 Button Suit
Tie #F280 - White Matte Windsor
Pocket Square #H280 - White Matte



Belts: White

I K E EVENING
BY IKE BEHAR

S SLIM
FIT



Ike Behar

Jason

#380

Ike Behar | Jason

White
Black Satin Lapel
Slim Fit
1 Button Front
Vented

Shown with:

Pants #144 - Slim Fit Stretch, Flat Front, No Side Stripe
Shirt #WLF - White Laydown Collar, Fitted
or Shirt #410 - White Laydown Collar, Reg. Fit
Tie #B502 - Black Satin Bow
Pocket Square #H502 - Black Satin



**SLIM
FIT**



#111 Couture 1910 | Houston
page #17



#211 Couture 1910 | Barrow
page #18



#351 David Major | Suit
page #19



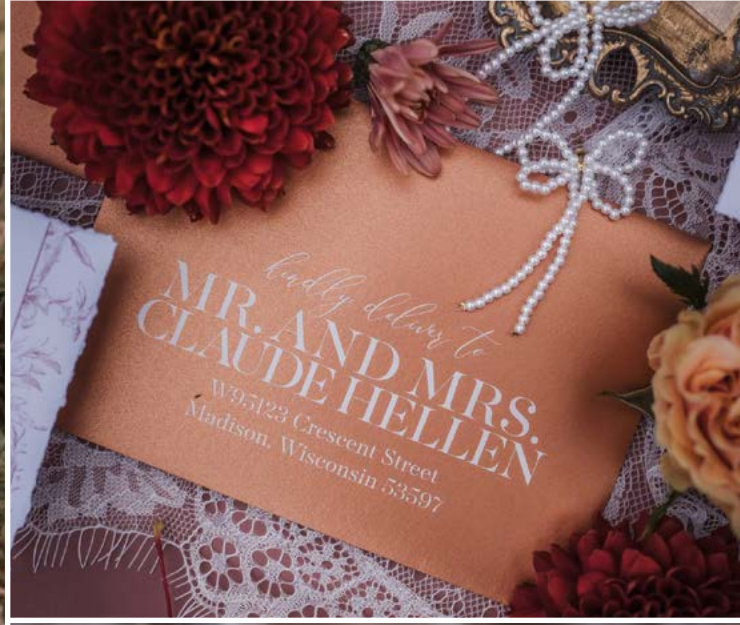
#151 Kenneth Cole | Lenox
page #20



#391 Jean Yves | Ceremonia
page #21



#521 Lord West | Cutaway
page #22



PHOTOS BY:
BOBBI PETERSON PHOTOGRAPHY

Couture 1910

Houston

#111

Couture 1910 | Houston

Steel Gray
Slim Fit
Self Faced Notch Lapel
2 Button Front
Side Vents

Shown with:

Pants #111 - Slim Fit, Flat Front, No Side Stripe
Shirt #WLF - White Laydown Collar, Slim Fit
or Shirt #410 - White Laydown Collar, Reg. Fit
Vest #V111 - Steel Gray (Not Shown)
Tie #F500 - White Satin Windsor
Pocket Square #H500 - White Satin

Also Available:

Tie #F111 - Steel Gray Windsor
Tie #B111 - Steel Gray Bow
Pocket Square #H111 - Steel Gray Matte



Belts: Brown, Cognac, Black

S SLIM
FIT

Couture 1910

Barrow

#211

Couture 1910 | Barrow

Steel Gray
Slim Fit
Satin Trim Notch Lapel
2 Button Front
Side Vents

Shown with:

Pants #111 - Slim Fit, Flat Front, No Side Stripe
Shirt #WLF - White Laydown Collar, Slim Fit
or Shirt #410 - White Laydown Collar, Reg. Fit
Vest #V111 - Steel Gray
Tie #B111 - Steel Gray Satin Bow
Pocket Square #H500 - White Satin

Also Available:

Tie #F111 - Steel Gray Windsor
Pocket Square #H111 - Steel Gray Matte



Belts: Brown, Cognac, Black



David Major

Stretch Slim Suit

#351

David Major | Suit

Light Gray Stretch Material
Self Faced Notch Lapel
Slim Fit
2 Button Front
Vented

Shown with:

Pants #351 - Slim Fit, Flat Front Suit Pant
Shirt #WLF - White Laydown Collar, Fitted
or Shirt #410 - White Laydown Collar, Reg. Fit
Vest #V351 - Light Gray Suit
Tie #F531 - Victorian Pewter Satin Windsor
Pocket Square #H531 - Victorian Pewter Satin

Also Available:

Tie #B351 - Light Gray Matte Bow
Tie #F351 - Light Gray Windsor
Pocket Square #H351 - Light Gray



Belts: Cognac, Brown, Black

S SLIM FIT

David Major
— SELECT —

(800) 236-7303

Kenneth Cole

Lenox

#151

Kenneth Cole | Lenox

Heather Gray

Slim Fit

Self Faced Notch Lapel with Satin Trim

2 Button Front

Vented

Shown with:

Pants #151 - Slim Fit, Flat Front, No Side Stripe

Shirt #WLF - White Laydown Collar, Slim Fit

or Shirt #410 - White Laydown Collar, Reg. Fit

Vest #V151 - Heather Gray Satin (Not Shown)

Tie #B151 - Heather Gray Satin Bow

Pocket Square #H500 - White Satin

Also Available:

Tie #F151 - Heather Gray Windsor

Pocket Square #H151 - Heather Gray Satin

KENNETH COLE

Jean Yves

Ceremonia

#391

Jean Yves | Ceremonia Suit

Steel Gray
Modern Fit
Self Notch Lapel
2 Button Front
Non-Vented

Shown with:

Pants #191 - Modern Fit, Flat Front
Shirt #WLF - White Laydown Collar, Fitted
or Shirt #410 - White Laydown Collar, Reg. Fit
Vest #M191 - Gray Allure Satin Trim
Tie #F301 - Mercury Simply Solid Windsor
Pocket Square #H301 - Mercury Simply Solid

Also Available:

Tie #F191 - Steel Gray Satin Windsor
Pocket Square #H191 - Steel Gray Matte

Jean Yves

(800) 236-7303

M MODERN
FIT

Chaps, Ralph Lauren

Somerset

#521

Chaps, Ralph Lauren | Somerset

Charcoal Gray

Cutaway

Contemporary Fit

Self Peak Lapel

1 Button Front

Vented

Shown with:

Pants #121 - Gray Stripe, Classic Fit, Two Pleats,
No Side Stripe

Shirt #310 - White Wingtip Microfiber

Vest and Tie - Not Available

CHAPS
RALPH LAUREN



**CONTEMPORARY
FIT**

Colors



DENIM BLUE
#123 Allure Men | Ridge
page #25



NAVY BLUE
#153 Ike Behar | Sebastian
page #26



DUSK BLUE
#133 Ike Behar | Lane
page #27



FRENCH BLUE
#333 David Major | Suit
page #28



NAVY BLUE
#243 Ike Behar | Collin
page #29



NAVY BLUE
#143 Ike Behar | Blake
page #30



BURGUNDY
#186 Ike Behar | Marbella
page #31



BROWN
#125 Ike Evening | Archer
page #32



TAN
#355 David Major | Suit
page #33



CINNAMON
#126 MOD | Lorenzo
page #34



HUNTER GREEN
#128 Ike Behar | Luka
page #35



ALLYSHA NOELLE
© WWW.ALLYSHANOELLEPHOTOGRAPHY.COM



PHOTOS BY:
ALLYSHA NOELLE PHOTOGRAPHY

Allure Men

Ridge

#123

Allure Men | Ridge

Denim Blue Stretch Material
Slim Fit Coat
Self Faced Framed Notch Lapel
2 Button Front
Vented

Shown with:

Pants #123 - Slim Fit, Flat Front, No Side Stripe
Shirt #WLF - White Laydown Collar, Slim Fit
or Shirt #410 - White Laydown Collar, Reg. Fit
Vest #V123 - Allure Men Denim Blue
Tie #B123 - Denim Blue Bow
Pocket Square #H123 - Denim Blue

Also Available:

Tie #F123 - Denim Blue Windsor



Belts: Brown, Cognac

ALLURE MEN
BY JEAN YVES

(800) 236-7303

S SLIM
FIT

Ike Behar

Sebastian

#153

Ike Behar | Sebastian

Navy Blue
Slim Fit Coat
Satin Faced Notch Lapel
2 Button Front
Vented

Shown with:

Pants #243 - Slim Fit, Flat Front, No Side Stripe
Shirt #WLF - White Laydown Collar, Slim Fit
or Shirt #410 - White Laydown Collar, Reg. Fit
Vest #V243 - Navy Ike Behar
Tie #B243 - Navy Satin Bow
Pocket Square #H500 - White Satin

Also Available:

Tie #F243 - Navy Satin Windsor
Pocket Square #H243 - Navy Satin

IKE EVENING
BY IKE BEHAR

www.dbformalwear.com

S SLIM
FIT

Ike Behar

Lane

#133

Ike Behar | Lane

Dusk Blue

Self Faced Peak Lapel with Satin Trim

Slim Fit

1 Button Front

Vented

Shown with:

Pants #133 - Slim Fit, Flat Front, No Side Stripe

Shirt #WLF - White Laydown Collar, Slim Fit

or Shirt #410 - White Laydown Collar, Reg. Fit

Vest #V133 - Dusk Blue

Tie #B133 - Dusk Blue Satin Bow

Pocket Square #H500 - White Satin

Also Available:

Tie #F133 - Dusk Blue Satin Windsor

Pocket Square #H133 - Dusk Blue Satin

IKE EVENING
BY IKE BEHAR**S** SLIM
FIT

David Major

Stretch Slim Suit

#333

David Major | Suit

French Blue Stretch Material
Self Faced Notch Lapel
Slim Fit
2 Button Front
Vented

Shown with:

Pants #333 - Slim Fit, Flat Front Suit Pant
Shirt #WLF - White Laydown Collar, Fitted
or Shirt #410 - White Laydown Collar, Reg. Fit
Vest #V333 - French Blue Suit
Tie #F504 - Paradise Pink Satin Windsor
Pocket Square #H504 - Paradise Pink Satin
Shoes #BRMT - Brown Matte

Also Available:

Tie #F333 - French Blue Matte Windsor
Tie #B333 - French Blue Matte Bow
Pocket Square #H333 - French Blue Matte



Belts: Cognac, Brown, Black

David Major
— SELECT —

S SLIM
FIT

Ike Behar

Collin

Luxury
Super 120's
Wool

#243

Ike Behar | Suit

Navy Blue Light Weight Wool

Luxury Super 120's Wool

Slim Fit

Self Notch Lapel

2 Button Front

Vented

Shown with:

Pants #243 - Slim Fit, Flat Front, No Side Stripe

Shirt #WLF - White Laydown Collar, Slim Fit

or Shirt #410 - White Laydown Collar, Reg. Fit

Vest #V243 - Navy Ike Behar

Tie #F243 - Navy Satin Windsor

Pocket Square #H500 - White Satin

Also Available:

Tie #B243 - Navy Satin Bow

Pocket Square #H243 - Navy Satin

IKE EVENING
BY IKE BEHAR

(800) 236-7303

S SLIM
FIT



Luxury
Super 120's
Wool

DB•FW

Ike Behar

Blake

#143

Ike Behar | Blake

Navy Blue Light Weight Wool
Black Satin Lapel, Trim and Buttons
Luxury Super 120's Wool
Slim Fit
Black Satin Peak Lapel
1 Button Front
Vented

Shown with:

Pants #243 - Slim Fit, Flat Front, No Side Stripe
Shirt #WLF - White Laydown Collar, Slim Fit
or Shirt #410 - White Laydown Collar, Reg. Fit
Vest #V243 - Navy Ike Behar
Tie #B502 - Black Satin Bow
Pocket Square #H500 - White Satin

Also Available:

Pants #244 - Slim Fit, Flat Front, Side Stripe
Tie #F243 - Navy Satin Windsor
Tie #B243 - Navy Satin Bow
Pocket Square #H243 - Navy Satin

IKE EVENING
BY IKE BEHAR

S SLIM
FIT

Luxury
Super 120's
Wool

Ike Behar

Marbella

#186

Ike Behar | Marbella

Burgundy Light Weight Wool
Black Satin Lapel, Trim and Buttons
Luxury Super 120's Wool
Slim Fit
Peak Lapel
1 Button Front
Vented
Flat Front Pant, Side Stripe

Shown with:

Pants #144 - Slim Fit, Flat Front, No Side Stripe
Shirt #WLF - White Laydown Collar, Slim Fit
or Shirt #410 - White Laydown Collar, Reg. Fit
Vest #V186 - Burgundy Ike Behar
Tie #B502 - Black Satin Bow
Pocket Square #H500 - White Satin

Also Available:

Pants #186 - Burgundy Flat Front Slim Fit Pant

Ike Evening

Archer

#125

Ike Evening | Archer

Brown
Self Faced Notch Lapel
2 Button Front
Vented

Shown with:

Pants #125 - Slim Fit, Flat Front Suit Pant
Shirt #WLF - White Laydown Collar, Fitted
or Shirt #410 - White Laydown Collar, Reg. Fit
Vest #V125 - Brown Archer
Tie #F509 - Ivory Satin Windsor
Pocket Square #H509 - Ivory Satin
Shoes #CGMT - Cognac Matte

Also Available:

Tie #B125 - Brown Archer Bow
Pocket Square #H125 - Brown Archer



Belts: Brown, Cognac

S SLIM
FIT

IKE EVENING
BY IKE BEHAR

David Major

Stretch Slim Suit

#355

David Major | Suit

Tan Stretch Material
Self Faced Notch Lapel
2 Button Front
Vented

Shown with:

Pants #355 - Slim Fit, Flat Front Suit Pant
Shirt #WLF - White Laydown Collar, Fitted
or Shirt #410 - White Laydown Collar, Reg. Fit
Vest #V355 - Tan Matte
Tie #B355 - Tan Matte Bow
Pocket Square #H355 - Tan Matte

Also Available:

Tie #F355 - Tan Matte Windsor



Belts: Brown, Cognac

David Major
— SELECT —

(800) 236-7303

S SLIM
FIT

MOD

Lorenza

#126

MOD | Lorenzo

Cinnamon Stretch Material
Self Faced Notch Lapel
Slim Fit
2 Button Front
Vented

Shown with:

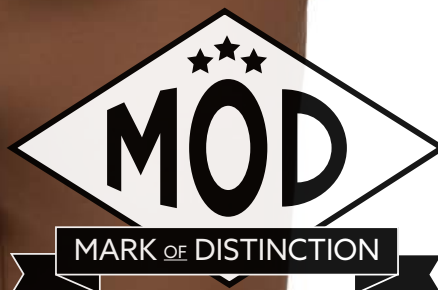
Pants #126 - Slim Fit, Flat Front, No Side Stripe
Shirt #WLF - White Laydown Collar, Slim Fit
or Shirt #410 - White Laydown Collar, Reg. Fit
Vest #V126 - Cinnamon Lorenzo
Tie #F509 - Ivory Satin Windsor
Pocket Square #H509 - Ivory Satin

Also Available:

Tie #B126 - Cinnamon Matte Bow
Tie #F126 - Cinnamon Matte Windsor
Pocket Square #H126 - Cinnamon Matte



Belts: Cognac, Brown



S SLIM
FIT

Ike Evening

Luka

#128

Ike Evening | Luka

Hunter Green Stretch Material
Self Faced Notch Lapel
Slim Fit
2 Button Front
Vented

Shown with:

Pants #128 - Slim Fit, Flat Front Suit Pant
Shirt #WLF - White Laydown Collar, Fitted
or Shirt #410 - White Laydown Collar, Reg. Fit
Vest #V128 - Green Luka
Tie #F509 - Ivory Satin Windsor
Pocket Square #H509 - Ivory Satin

Also Available:

Tie #B128 - Green Matte Bow
Tie #F128 - Green Matte Windsor
Pocket Square #H128 - Green Matte



Belts: Brown, Cognac, Black

IKE EVENING
BY IKE BEHAR

S SLIM
FIT



PHOTOS BY:
KLEM STUDIO PHOTOGRAPHY
@klemstudiosphotography



#952 MOD | Equinox Velvet
page #38



#953 MOD | Starlight Lame' Royal
page #39



#961 MOD | Starlight Lame' Stone
page #40



#951 MOD | Silver
page #41



#957 Allure Men | Venice Aubergine
page #42



#954 Allure Men | Venice Dusty Rose
page #43



#956 Ike Behar | Carter Red
page #44



#963 MOD | Hendrix Abstract Multi
page #45



#959 MOD | Camo Lame' Gold/Black
page #46



#969 MOD | Ryan Floral Multi
page #47

MOD

Equinox

#952

MOD | Equinox

Black Embossed Paisley Velvet
Slim Fit
Satin Shawl Lapel
1 Button Front
Vented

Shown with:

Pants #362 - Black Slim Fit Stretch, Flat Front
Shirt #WLF - White Laydown Collar, Fitted
or Shirt #410 - White Laydown Collar, Reg. Fit
Tie #B502 - Black Satin Bow
Pocket Square #H500 - White Satin

Also Available:

Vest #V952 - 4 Button Black Solid Velvet
Tie #B952 - Black Solid Velvet Bow

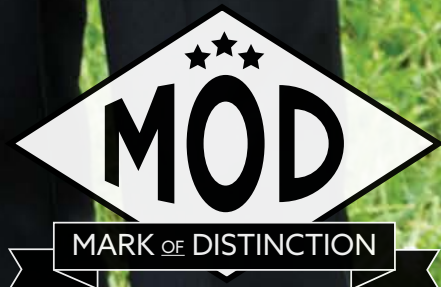
Men's Sizes Only (Even Sizes)

Short	34 - 48
Regular	34 - 54
Long	36 - 52
X-Long	38 - 42

Boy's sizes not available



Belt: Black



S SLIM FIT

MOD

Starlight

#953

MOD | Starlight Lame'

Royal Blue Lame' Tuxedo
 Black Satin Shawl Lapel
 Slim Fit
 1 Button Front
 Vented

Shown with:

Pants #362 - Black Slim Fit Stretch, Flat Front
 Shirt #WLF - White Laydown Collar, Fitted
 or Shirt #410 - White Laydown Collar, Reg. Fit
 Tie #F702 - Black Colby Windsor
 Pocket Square #H502 - Black Satin

Also Available:

Tie #B953 - Royal Blue Lame' Bow

Men's Sizes Only (Even Sizes)

Short	34 - 46
Regular	34 - 50
Long	36 - 50

Boy's sizes not available



Belt: Black



(800) 236-7303



MOD

Starlight

#961

MOD | Starlight Lame'

Stone Lame' Tuxedo
 Black Satin Shawl Lapel
 Slim Fit
 1 Button Front
 Vented

Shown with:

Pants #362 - Black Slim Fit Stretch, Flat Front
 Shirt #WLF - White Laydown Collar, Fitted
 or Shirt #410 - White Laydown Collar, Reg. Fit
 Tie #B502 - Black Satin Bow
 Pocket Square #H500 - White Satin

Also Available:

Tie #B961 - Stone Lame' Bow

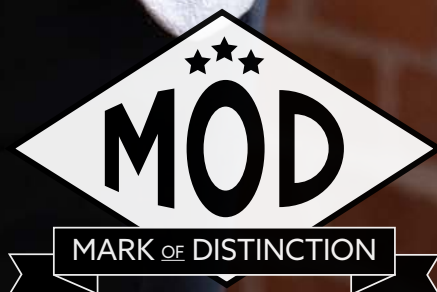
Men's Sizes Only (Even Sizes)

Short	34 - 46
Regular	34 - 50
Long	36 - 50

Boy's sizes not available



Belt: Black



S SLIM
FIT

MOD

Starlight

#951

MOD | Starlight Lame'

Silver Lame' Tuxedo
 Black Satin Shawl Lapel
 Slim Fit
 1 Button Front
 Vented

Shown with:

Pants #362 - Black Slim Fit Stretch, Flat Front
 Shirt #BLF - White Laydown Collar, Fitted
 or Shirt #406 - White Laydown Collar, Reg. Fit
 Tie #B951 - Silver Lame' Bow
 Pocket Square #H502 - Black Satin

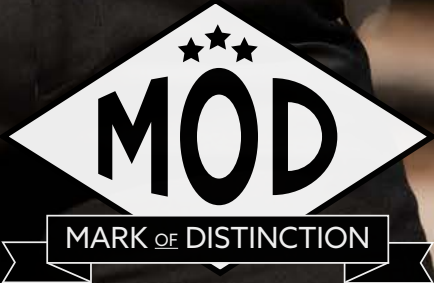
Men's Sizes Only (Even Sizes)

Short	34 - 46
Regular	34 - 50
Long	36 - 50

Boy's sizes not available



Belt: Black



(800) 236-7303

S SLIM FIT

Allure Men

Venice

#957

Allure Men | Velvet

Aubergine Velvet Tuxedo
 Self Faced Shawl Lapel
 Slim Fit
 1 Button Front
 Vented

Shown with:

Pants #362 - Black Slim Fit Stretch, Flat Front
 Shirt #WLF - White Laydown Collar, Fitted
 or Shirt #410 - White Laydown Collar, Reg. Fit
 Tie #B500 - White Satin Bow
 Pocket Square #H500 - White Satin

Men's Sizes Only (Even Sizes)

Short	34 - 46
Regular	34 - 50
Long	36 - 50

Boy's sizes not available



Belt: Black

ALLURE MEN

www.dbformalwear.com

S SLIM
FIT

Allure Men

Venice

#954

Allure Men | Velvet

Dusty Rose Velvet Tuxedo
 Self Faced Shawl Lapel
 Slim Fit
 1 Button Front
 Vented

Shown with:

Pants #362 - Black Slim Fit Stretch, Flat Front
 Shirt #WLF - White Laydown Collar, Fitted
 or Shirt #410 - White Laydown Collar, Reg. Fit
 Tie #B500 - White Satin Bow
 Pocket Square #H500 - White Satin

Men's Sizes Only (Even Sizes)

Short	34 - 46
Regular	34 - 52
Long	36 - 50

Boy's sizes not available



Belt: Black

S SLIM
FIT

ALLURE MEN

(800) 236-7303

Ike Evening

Red Carter

#956

Ike Evening | Red Carter

Red Blended Fabric Tuxedo
 Black Satin Framed Peak Lapel
 1 Button Front
 Slim Fit

Shown with:

Pants #362 - Black Slim Fit Stretch, Flat Front
 Shirt #WLF - White Laydown Collar, Fitted
 or Shirt #410 - White Laydown Collar, Reg. Fit
 Vest #V956 - 4 Button Red Carter
 Tie #B502 - Black Satin Bow
 Pocket Square #H502 - Black Satin

Men's Sizes Only (Even Sizes)

Short	34 - 46
Regular	34 - 60
Long	36 - 56

Boy's sizes not available



Belt: Black

IKE EVENING
 BY IKE BEHAR

S SLIM
 FIT

MOD

Hendrix

#963

MOD | Hendrix

Wool Blend Abstract Multi-Color
 Self-faced Notch Lapel
 1 Button Front
 Slim Fit

Shown with:

Pants #362 - Black Slim Fit Stretch, Flat Front
 Shirt #WLF - White Laydown Collar, Fitted
 or Shirt #410 - White Laydown Collar, Reg. Fit
 Tie #B502 - Black Satin Bow
 Pocket Square #H502 - Black Satin

Also Available:

Tie #B963 - Hendrix Abstract Print Bow

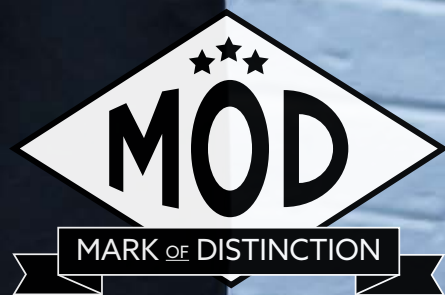
Men's Sizes Only (Even Sizes)

Short	34 - 46
Regular	34 - 50
Long	36 - 48

Boy's sizes not available



Belt: Black



(800) 236-7303



MOD

Camo Lamé'

#959

MOD | Camo Lamé'

Wool Blend Black & Gold Camo Tuxedo
 Black Satin Shawl Lapel
 1 Button Front
 Slim Fit

Shown with:

Pants #362 - Black Slim Fit Stretch, Flat Front
 Shirt #WLF - White Laydown Collar, Fitted
 or Shirt #410 - White Laydown Collar, Reg. Fit
 Tie #B959 - Gold Camo Bow
 Pocket Square #H502 - Black Satin

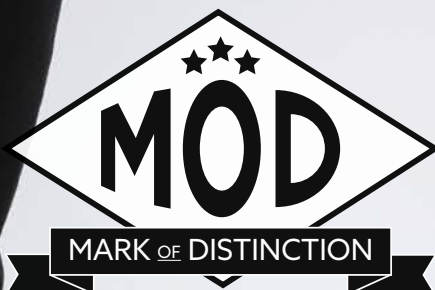
Men's Sizes Only (Even Sizes)

Short	34 - 46
Regular	34 - 50
Long	36 - 50

Boy's sizes not available



Belt: Black



S SLIM FIT

MOD

Ryan

#969

MOD | Ryan

Wool Blend Floral Multi-Color
 Self-faced Notch Lapel
 1 Button Front
 Slim Fit

Shown with:

Pants #362 - Black Slim Fit Stretch, Flat Front
 Shirt #WLF - White Laydown Collar, Fitted
 or Shirt #410 - White Laydown Collar, Reg. Fit
 Tie #B969 - Floral Multi-Color Bow
 Pocket Square #H502 - Black Satin

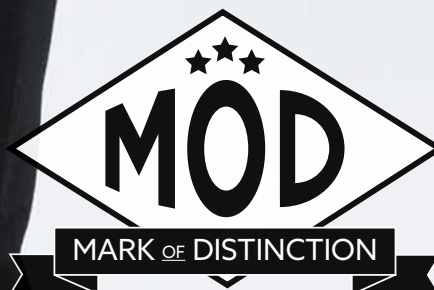
Men's Sizes Only (Even Sizes)

Short	34 - 46
Regular	34 - 50
Long	36 - 50

Boy's sizes not available



Belt: Black



(800) 236-7303

S SLIM
FIT



PHOTOS BY:
LINDSEY COLE PHOTOGRAPHY
@lindseycolephotography

Accessories Index

Essentials

Shirts	pages #50-51
Pants.....	page #52
Shoes.....	page #53
Jewelry.....	page #53
Belts.....	page #53

View our catalog online!

www.dbformalwear.com

Accessories

by Collection

Portofino by Larr Brio	pages #54-57	Blossom Floral by Larr Brio	page #63
Satin by Malibu Tie, Inc.....	pages #58-59	Camouflage by Mossy Oak.....	page #64
Tweed by Suits America	page #60	Destination by Santana.	page #64
Colby by Larr Brio.....	page #61	Metallics by Larr Brio.....	page #65
Simply Solid by Larr Brio.....	page #62	Tonal Dot by Larr Brio.....	page #65

Accessories

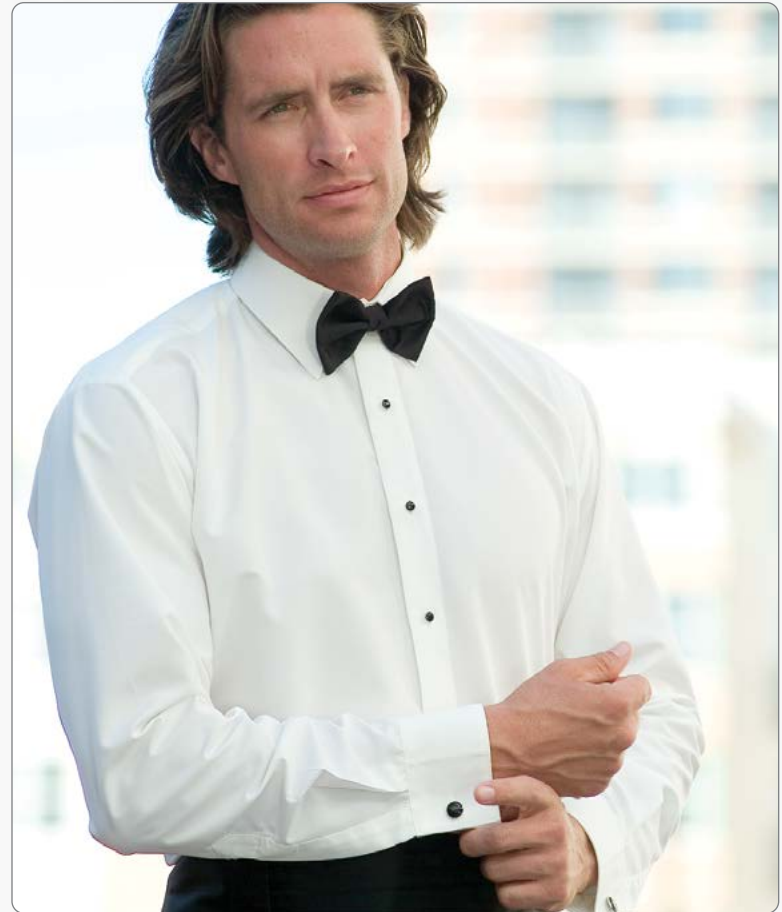
by Color

Pink / Red / Burgundy	pages #66-67	Purple / Lapis.....	pages #78-79
Coral / Orange.....	pages #68-69	Magenta / Fuchsia / Plum	pages #80-81
Green / Clover / Celadon	pages #70-71	White / Yellow / Gold.....	pages #82-83
Sage / Olive / Hunter.....	pages #72-73	Ivory / Beige / Brown	pages #84-85
Turquoise / Aqua	pages #74-75	Gray / Pewter / Silver	page #86
Dark Blue / Royal Blue	page #76	Black.....	page #87
Cornflower / Slate / Navy	page #77		



White Microfiber Laydown Collar

Traditional Fit #410 Fitted #WLF Extra Length #610



Ivory Microfiber Laydown Collar

Traditional Fit #414 Fitted #ILF Extra Length #614



Black Microfiber Laydown Collar

Traditional Fit #406 Fitted #BLF Extra Length #606



Fitted Styles Available in Microfiber Shirts

- White Laydown #WLF
- Ivory Laydown #ILF
- Black Laydown #BLF



White
Microfiber Wingtip #310



Ivory
Microfiber Wingtip #314

Fitted Shirt Size Chart

for styles #WLF, #ILF and #BLF

NECK / SLEEVE	XS (13-13.5)	S (14-14.5)	M (15-15.5)	L (16-16.5)	XL (17-17.5)	2XL (18-18.5)	3XL (19-19.5)
30-31	X	X	X	X			
32-33	X	X	X	X	X	X	X
34-35		X	X	X	X	X	X
36-37		X	X	X	X	X	X
38-39			X	X	X	X	X
40-41				X	X	X	
Max. Chest		32-37	37-41	41-44	44-47	46-50	56-58
Max. Waist		27-31	30-34	33-37	36-41	39-44	58-60

Tuxedo and Suit Trousers



Heather Gray - Kenneth Cole
Slim #151 (3 size adjustable)



Black - Ike Behar
Slim #244 (3 size adjustable)



Dusk Blue - Ike Behar
Slim #133 (3 size adjustable)



Burgundy - Ike Behar
Slim #186 (3 size adjustable)



Brown Archer - Ike Evening
Slim #125 (2 size elastic)



Light Gray - David Major
Stretch Slim #351 (2 size elastic)



Black - Allure Men
Slim Fit #362 (2 size elastic)



French Blue - David Major
Stretch Slim #333 (2 size elastic)



Cinnamon - MOD
Slim #126 (2 size elastic)



Tan - David Major
Stretch Slim #355 (2 size elastic)



Charcoal Gray - Allure Men
Slim #191 (3 size adjustable)



Black - Larr Brio
Slim #144 (3 size adjustable)



Navy Blue - Ike Behar
Slim #243 (3 size adjustable)



Hunter Green - Ike Behar
Slim #128 (2 size elastic)



White - FCG
Slim #280 (2 size elastic)



Striped - Chaps, Ralph Lauren
Classic Fit #121 (3 size adjustable)



Steel Gray - Couture 1910
Slim #111 (3 size adjustable)



Denim Blue - Allure Men
Slim #123 (2 size elastic)

Shoes



Black Matte Finish
#BLMT



Brown Matte Finish
#BRMT



Classic Ivory Jazz Oxford
#K200



Black Patent Finish
#BLPT



Allure Cognac Matte Finish
#CGMT



White Patent Finish
#WHPT

Jewelry

Options



White / Silver Basic
Studs and Cufflinks
"W"



Black / Silver Basic
Studs and Cufflinks
"B"



Gray / Silver Basic
Studs and Cufflinks
"G"



White / Gold Basic
Studs and Cufflinks
"E"



Black / Gold Basic
Studs and Cufflinks
"D"

Belt

Colors



Black
Black / Silver Buckle



Cognac
Black / Silver Buckle



Brown
Brown / Silver Buckle



White
White / Silver Buckle

Larr Brio

Portafina

See chart on page #55 for a complete listing of style numbers and colors available in this collection.

Full Back Vest

Size	Fits Coat Size(s)
S	18 - 38
M*	39 - 42
L*	43 - 44
XL*	46 - 48
2XL	50 - 52
3XL	54 - 56

Open Back Vest

BS	3 - 6
BM	7 - 12
BL	14 - 16
4XL	58+

Available in:

- Vest
- Bow Tie
- Striped Windsor Tie
- Solid Windsor Tie
- Paisley Windsor Tie
- Ombre Windsor Tie

Pocket Squares

- Match Vest Pattern
- Match Ombre Ties

*Long Vests Available



Shown in Turquoise
Vest #M460
Bow Tie #S460
Pocket Square #H460



Vest
Bow Tie
Pocket Square



Striped
Windsor Tie



Solid
Windsor Tie



Paisley
Windsor Tie



Ombre Tie
Pocket Square

Larr Brio

Portafina

Shown in Ruby
V #M429
B #FS29
PS #H429



(800) 236-7303

All of the colors shown are available in vests, bow ties & windsor ties. The coordinating pocket squares are also listed. For color matching, please use your Swatch Wheel or call for a free sample.



Ruby Red
Vest #M429
Bow Tie #S429
P.S. n/a (use H506)
Ombre Tie #T429
Ombre PS n/a (use H506)
Paisley #FP29
Solid #FS29
Stripe #F429



Apple
Vest #M426
Bow Tie #S426
Pocket Square #H426
Ombre Tie #T426
Ombre PS #HT26
Paisley #FP26
Solid #FS26
Stripe #F426



Wine
Vest #M466
Bow Tie #S466
P.S. n/a (use H636)
Ombre Tie #T466
Ombre PS n/a (use H636)
Paisley #FP66



Passion
Vest #M455
Bow Tie #S455
Pocket Square #H455
Ombre Tie #T455
Ombre PS #HT55
Paisley #FP55
Solid #FS55
Stripe #F455



Watermelon
Vest #M414
Bow Tie #S414
Pocket Square #H414
Ombre Tie #T414
Ombre PS #HT14
Paisley #FP14
Solid #FS14
Stripe #F414



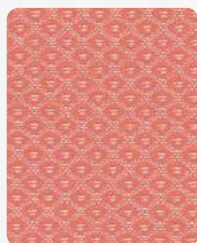
Azalea
Vest #M444
Bow Tie #S444
Pocket Square #H444
Ombre Tie #T444
Ombre PS #HT44
Paisley #FP44
Solid #FS44
Stripe #F444



Fuchsia
Vest #M404
Bow Tie #S404
Pocket Square #H404
Ombre Tie #T404
Ombre PS #HT04
Paisley #FP04
Solid #FS04
Stripe #F404



Flamingo
Vest #M434
Bow Tie #S434
Pocket Square #H434
Ombre Tie #T434
Ombre PS #HT34
Paisley #FP34
Solid #FS34
Stripe #F434



Terra Cotta
Vest #M420
Bow Tie #S420
Pocket Square #H420
Ombre Tie #T420
Ombre PS #HT20
Paisley #FP20
Solid #FS20
Stripe #F420



Palm Beach Coral
Vest #M486
Bow Tie #S486
Pocket Square #H486
Ombre Tie #T486
Ombre PS #HT86
Paisley #FP86
Solid #FS86
Stripe #F486



Cinnamon
Vest #M406
Bow Tie #S406
Pocket Square #H406
Ombre Tie #T406
Ombre PS #HT06
Paisley #FP06
Solid #FS06
Stripe #F406



Persimmon
Vest #M416
Bow Tie #S416
Pocket Square #H416
Ombre Tie #T416
Ombre PS #HT16
Paisley #FP16
Solid #FS16
Stripe #F416



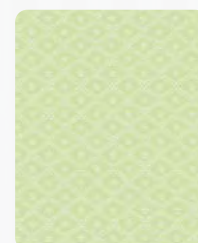
Tangerine
Vest #M475
Bow Tie #S475
Pocket Square #H475
Ombre Tie #T475
Ombre PS #HT75
Paisley #FP75
Solid #FS75
Stripe #F475



Saffron
Vest #M474
Bow Tie #S474
Pocket Square #H474
Ombre Tie #T474
Ombre PS #HT74
Paisley #FP74
Solid #FS74
Stripe #F474



Yellow
Vest #M410
Bow Tie #S410
Pocket Square #H410
Ombre Tie #T410
Ombre PS #HT10
Paisley #FP10
Solid #FS10
Stripe #F410



Honeydew
Vest #M465
Bow Tie #S465
Pocket Square #H465
Ombre Tie #T465
Ombre PS #HT65
Paisley #FP65
Solid #FS65
Stripe #F465



Lime
Vest #M449
Bow Tie #S449
Pocket Square #H449
Ombre Tie #T449
Ombre PS #HT49
Paisley #FP49
Solid #FS49
Stripe #F449



Kelly Green
Vest #M432
Bow Tie #S432
Pocket Square #H432
Ombre Tie #T432
Ombre PS #HT32
Paisley #FP32
Solid #FS32
Stripe #F432



Jade Green
Vest #M451
Bow Tie #S451
Pocket Square #H451
Ombre Tie #T451
Ombre PS #HT51
Paisley #FP51
Solid #FS51
Stripe #F451



Clover
Vest #M418
Bow Tie #S418
Pocket Square #H418
Ombre Tie #T418
Ombre PS #HT18
Paisley #FP18
Solid #FS18
Stripe #F418



Sage
Vest #M482
Bow Tie #S482
Pocket Square #H482
Ombre Tie #T482
Ombre PS #HT82
Paisley #FP82
Solid #FS82
Stripe #F482



Olive
Vest #M462
Bow Tie #S462
Pocket Square #H462
Ombre Tie #T462
Ombre PS #HT62
Paisley #FP62
Solid #FS62
Stripe #F462



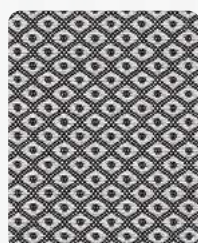
Fern
Vest #M438
Bow Tie #S438
Pocket Square #H438
Ombre Tie #T438
Ombre PS #HT38
Paisley #FP38
Solid #FS38
Stripe #F438



Holly
Vest #M452
Bow Tie #S452
Pocket Square #H452
Ombre Tie #T452
Ombre PS #HT52
Paisley #FP52
Solid #FS52
Stripe #F452



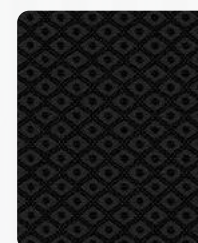
White
Vest #M400
Bow Tie #S400
Pocket Square #H400
Ombre Tie #T400
Ombre PS #HT00
Paisley #FP00
Solid #FS00
Stripe #F400



Platinum
Vest #M401
Bow Tie #S401
Pocket Square #H401
Ombre Tie #T401
Ombre PS #HT01
Paisley #FP01
Solid #FS01
Stripe #F401



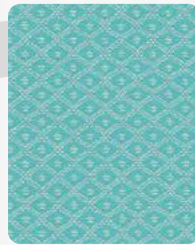
Pewter
Vest #M431
Bow Tie #S431
Pocket Square #H431
Ombre Tie #T431
Ombre PS #HT31
Paisley #FP31
Solid #FS31
Stripe #F431



Black
Vest #M402
Bow Tie #S402
Pocket Square #H402
Ombre Tie #T402
Ombre PS #HT02
Paisley #FP02
Solid #FS02
Stripe #F402

**Pool**

Vest #M411
Bow Tie #S411
Pocket Square #H411
Ombre Tie #T411
Ombre PS #HT11
Paisley #FP11
Solid #FS11
Stripe #F411

**Aqua**

Vest #M408
Bow Tie #S408
Pocket Square #H408
Ombre Tie #T408
Ombre PS #HT08
Paisley #FP08
Solid #FS08
Stripe #F408

**Mermaid**

Vest #M461
Bow Tie #S461
Pocket Square #H461
Ombre Tie #T461
Ombre PS #HT61
Paisley #FP61
Solid #FS61
Stripe #F461

**Peacock**

Vest #M492
Bow Tie #S492
Pocket Square #H492
Ombre Tie #T492
Ombre PS #HT92
Paisley #FP92
Solid #FS92
Stripe #F492

**Oasis**

Vest #M421
Bow Tie #S421
Pocket Square #H421
Ombre Tie #T421
Ombre PS #HT21
Paisley #FP21
Solid #FS21
Stripe #F421

**Turquoise**

Vest #M460
Bow Tie #S460
Pocket Square #H460
Ombre Tie #T460
Ombre PS #HT60
Paisley #FP60
Solid #FS60
Stripe #F460

**Blue Ice**

Vest #M443
Bow Tie #S443
Pocket Square #H443
Ombre Tie #T443
Ombre PS #HT43
Paisley #FP43
Solid #FS43
Stripe #F443

**Sky Blue**

Vest #M403
Bow Tie #S403
Pocket Square #H403
Ombre Tie #T403
Ombre PS #HT03
Paisley #FP03
Solid #FS03
Stripe #F403

**Dark Peacock**

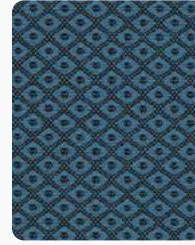
Vest #M446
Bow Tie #S446
Pocket Square #H446
Ombre Tie #T446
Ombre PS #HT46
Paisley #FP46
Solid #FS46
Stripe #F446

**Aqua Marine**

Vest #M422
Bow Tie #S422
Pocket Square #H422
Ombre Tie #T422
Ombre PS n/a (use H422)
Paisley #FP22
Solid #FS22
Stripe #F422

**Marine Blue**

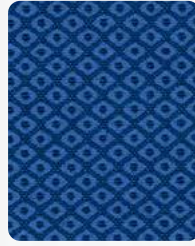
Vest #M439
Bow Tie #S439
Pocket Square #H439
Ombre Tie #T439
Ombre PS #HT39
Paisley #FP39
Solid #FS39
Stripe #F439

**Serene**

Vest #M433
Bow Tie #S433
Pocket Square #H433
Ombre Tie #T433
Ombre PS #HT33
Paisley #FP33
Solid #FS33
Stripe #F433

**Cornflower**

Vest #M423
Bow Tie #S423
Pocket Square #H423
Ombre Tie #T423
Ombre PS #HT23
Paisley #FP23
Solid #FS23
Stripe #F423

**Royal Blue**

Vest #M413
Bow Tie #S413
Pocket Square #H413
Ombre Tie #T413
Ombre PS #HT13
Paisley #FP13
Solid #FS13
Stripe #F413

**Jasmine**

Vest #M450
Bow Tie #S450
Pocket Square #H450
Ombre Tie #T450
Ombre PS #HT50
Paisley #FP50
Solid #FS50
Stripe #F450

**Wisteria**

Vest #M485
Bow Tie #S485
Pocket Square #H485
Ombre Tie #T485
Ombre PS #HT85
Paisley #FP85
Solid #FS85
Stripe #F485

**Lapis**

Vest #M427
Bow Tie #S427
Pocket Square #H427
Ombre Tie #T427
Ombre PS #HT27
Paisley #FP27
Solid #FS27
Stripe #F427

**Regency**

Vest #M437
Bow Tie #S437
Pocket Square #H437
Ombre Tie #T437
Ombre PS #HT37
Paisley #FP37
Solid #FS37
Stripe #F437

**Sangria**

Vest #M473
Bow Tie #S473
Pocket Square #H473
Ombre Tie #T473
Ombre PS #HT73
Paisley #FP73
Solid #FS73
Stripe #F473

**Victorian Lilac**

Vest #M417
Bow Tie #S417
Pocket Square #H417
Ombre Tie #T417
Ombre PS #HT17
Paisley #FP17
Solid #FS17
Stripe #F417

**Plum**

Vest #M440
Bow Tie #S440
Pocket Square #H440
Ombre Tie #T440
Ombre PS #HT40
Paisley #FP40
Solid #FS40
Stripe #F440

**Purple**

Vest #M407
Bow Tie #S407
Pocket Square #H407
Ombre Tie #T407
Ombre PS n/a (use H607)
Paisley #FP07
Solid #FS07
Stripe #F407

**Violet**

Vest #M453
Bow Tie #S453
Pocket Square #H453
Ombre Tie #T453
Ombre PS #HT53
Paisley #FP53
Solid #FS53
Stripe #F453

**Golden**

Vest #M442
Bow Tie #S442
Pocket Square #H442
Ombre Tie #T442
Ombre PS #HT42
Solid #FS42
Stripe #F442

**Chocolate**

Vest #M425
Bow Tie #S425
Pocket Square #H425
Ombre Tie #T425
Ombre PS #HT25
Paisley #FP25
Solid #FS25
Stripe #F425

**Cappuccino**

Vest #M405
Bow Tie #S405
Pocket Square #H405
Ombre Tie #T405
Ombre PS #HT05
Paisley #FP05
Solid #FS05
Stripe #F405

**Latte**

Vest #M415
Bow Tie #S415
Pocket Square #H415
Ombre Tie #T415
Ombre PS #HT15
Paisley #FP15
Solid #FS15
Stripe #F415

**Champagne**

Vest #M412
Bow Tie #S412
Pocket Square #H412
Ombre Tie #T412
Ombre PS #HT12
Paisley #FP12
Solid #FS12
Stripe #F412

**Diamond White**

Vest #M409
Bow Tie #S409
Pocket Square #H409
Ombre Tie #T409
Ombre PS #HT09
Paisley #FP09
Solid #FS09
Stripe #F409

**Antique**

Vest #M419
Bow Tie #S419
Pocket Square #H419
Ombre Tie #T419
Ombre PS #HT19
Paisley #FP19
Solid #FS19
Stripe #F419

Satin

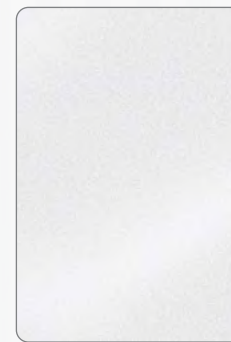
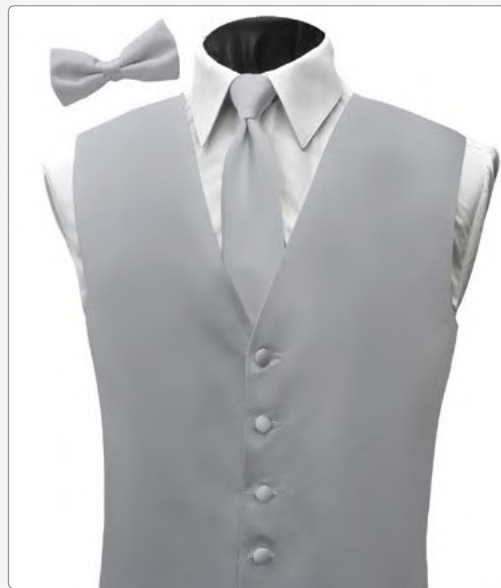
Full Back Vest

Size	Fits Coat Size(s)
S	18 - 38
M*	39 - 42
L*	43 - 44
XL*	46 - 48
2XL	50 - 52
3XL	54 - 56

Available in:

- Vest
- Windsor Tie
- Bow Tie
- Pocket Square

* Long Vests Available



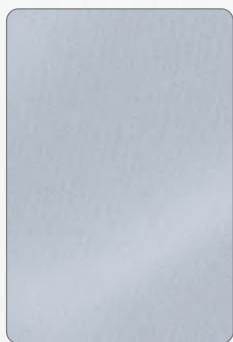
White
Vest Style #V500
Windsor Tie #F500
Bow Tie #B500
Pocket Square #H500



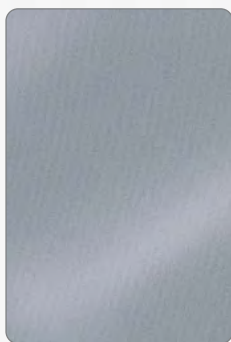
Black
Vest Style #V502
Windsor Tie #F502
Bow Tie #B502
Pocket Square #H502

Open Back Vest

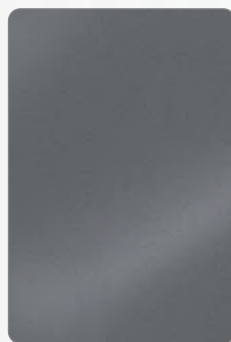
BS	3 - 6
BM	7 - 12
BL	14 - 16
4XL	58+



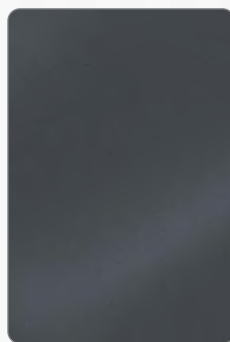
VI Silver
Vest Style #V511
Windsor Tie #F511
Bow Tie #B511
Pocket Square #H511



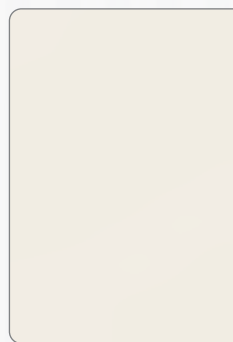
PV Platinum
Vest Style #V521
Windsor Tie #F521
Bow Tie #B521
Pocket Square #H521



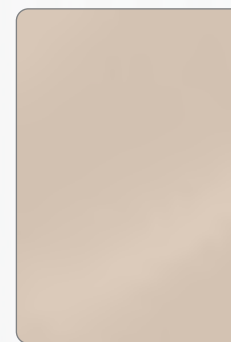
Victorian Pewter
Vest Style #V531
Windsor Tie #F531
Bow Tie #B531
Pocket Square #H531



Bali Gray
Vest Style #V541
Windsor Tie #F541
Bow Tie #B541
Pocket Square #H541



Ivory
Vest Style #V509
Windsor Tie #F509
Bow Tie #B509
Pocket Square #H509



Fino Cream
Vest Style #V505
Windsor Tie #F505
Bow Tie #B505
Pocket Square #H505



Cappuccino
Vest Style #V525
Windsor Tie #F525
Bow Tie #B525
Pocket Square #H525



Capri Red
Vest Style #V506
Windsor Tie #F506
Bow Tie #B506
Pocket Square #H506



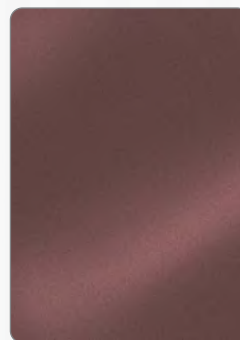
Fino Claret
Vest Style #V526
Windsor Tie #F526
Bow Tie #B526
Pocket Square #H526



Wine
Vest Style #V684
Windsor Tie #F684
Bow Tie #B684
Pocket Square #H684



Fino Burgundy
Vest Style #V636
Windsor Tie #F636
Bow Tie #B636
Pocket Square #H636



Rosewood
Vest Style #V544
Windsor Tie #F544
Bow Tie #B544
Pocket Square #H544



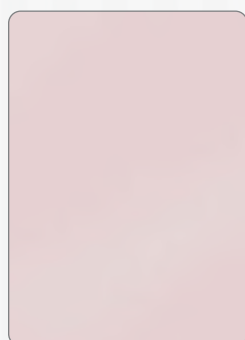
Watermelon
Vest Style #V634
Windsor Tie #F634
Bow Tie #B634
Pocket Square #H634



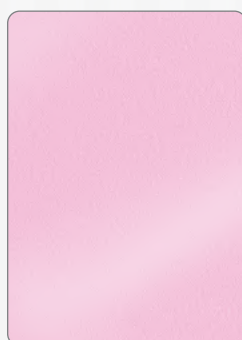
PV Cerise
Vest Style #V624
Windsor Tie #F624
Bow Tie #B624
Pocket Square #H624



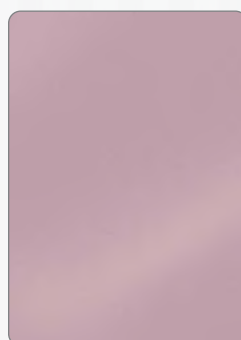
Paradise Pink
Vest Style #V504
Windsor Tie #F504
Bow Tie #B504
Pocket Square #H504



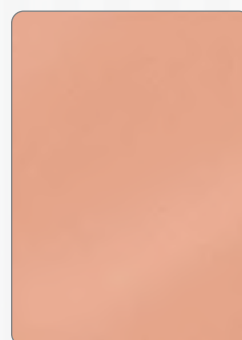
Winter Melon
Vest Style #V697
Windsor Tie #F697
Bow Tie #B697
Pocket Square #H697



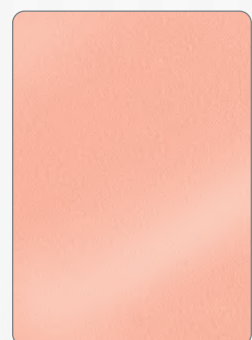
BL Pink
Vest Style #V514
Windsor Tie #F514
Bow Tie #B514
Pocket Square #H514



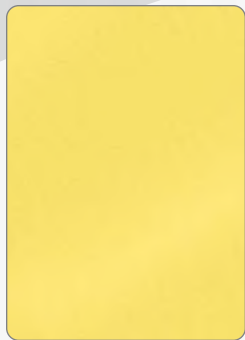
Quartz
Vest Style #V615
Windsor Tie #F615
Bow Tie #B615
Pocket Square #H615



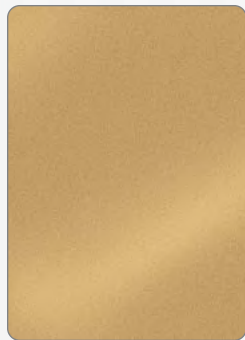
Porto Peach
Vest Style #V546
Windsor Tie #F546
Bow Tie #B546
Pocket Square #H546



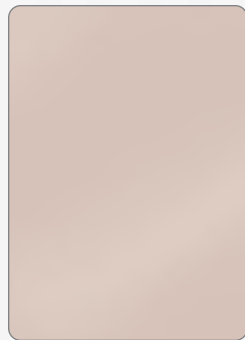
Capri Peach
Vest Style #V536
Windsor Tie #F536
Bow Tie #B536
Pocket Square #H536



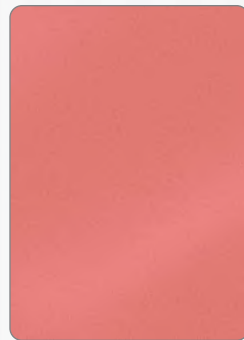
Rio Maize
 Vest Style #V560
 Windsor Tie #F560
 Bow Tie #B560
 Pocket Square #H560



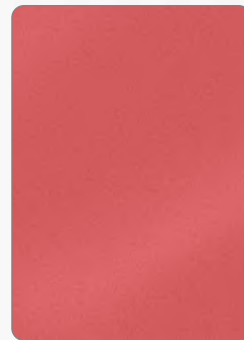
Victorian Gold
 Vest Style #V530
 Windsor Tie #F530
 Bow Tie #B530
 Pocket Square #H530



Beige
 Vest Style #V522
 Windsor Tie #F522
 Bow Tie #B522
 Pocket Square #H522



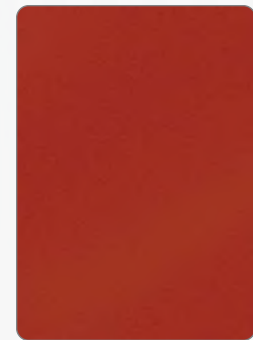
Fiesta Coral
 Vest Style #V584
 Windsor Tie #F584
 Bow Tie #B584
 Pocket Square #H584



Shrimp Toast
 Vest Style #V604
 Windsor Tie #F604
 Bow Tie #B604
 Pocket Square #H604



Sun Coral
 Vest Style #V576
 Windsor Tie #F576
 Bow Tie #B576
 Pocket Square #H576



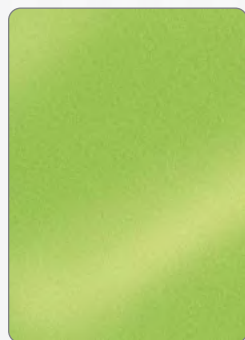
Fino Copper
 Vest Style #V626
 Windsor Tie #F626
 Bow Tie #B626
 Pocket Square #H626



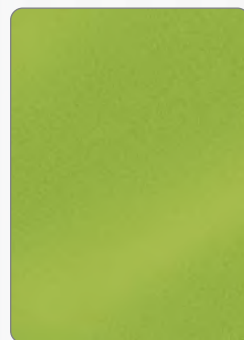
Fino Celadon
 Vest Style #V608
 Windsor Tie #F608
 Bow Tie #B608
 Pocket Square #H608



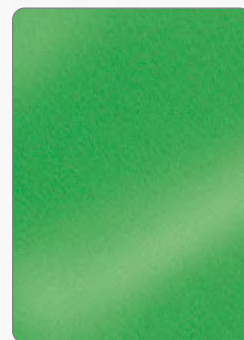
Light Olive
 Vest Style #V558
 Windsor Tie #F558
 Bow Tie #B558
 Pocket Square #H558



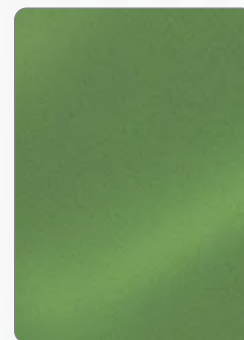
Rio Lime
 Vest Style #V548
 Windsor Tie #F548
 Bow Tie #B548
 Pocket Square #H548



Kiwi
 Vest Style #V568
 Windsor Tie #F568
 Bow Tie #B568
 Pocket Square #H568



Capri Green
 Vest Style #V588
 Windsor Tie #F588
 Bow Tie #B588
 Pocket Square #H588



Clover
 Vest Style #V578
 Windsor Tie #F578
 Bow Tie #B578
 Pocket Square #H578



Bali Hunter
 Vest Style #V648
 Windsor Tie #F648
 Bow Tie #B648
 Pocket Square #H648



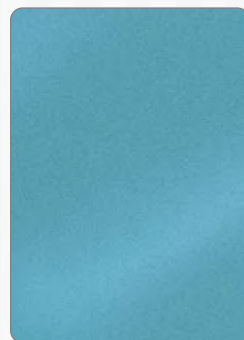
Night Teal
 Vest Style #V552
 Windsor Tie #F552
 Bow Tie #B552
 Pocket Square #H552



Baja Aqua
 Vest Style #V678
 Windsor Tie #F678
 Bow Tie #B678
 Pocket Square #H678



Fino Jade
 Vest Style #V688
 Windsor Tie #F688
 Bow Tie #B688
 Pocket Square #H688



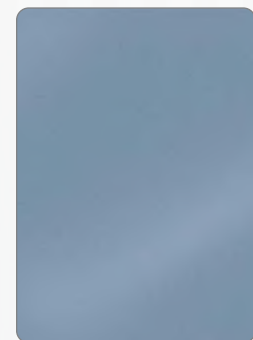
Premium Turquoise
 Vest Style #V573
 Windsor Tie #F573
 Bow Tie #B573
 Pocket Square #H573



Riviera Turquoise
 Vest Style #V543
 Windsor Tie #F543
 Bow Tie #B543
 Pocket Square #H543



PV Royal
 Vest Style #V613
 Windsor Tie #F613
 Bow Tie #B613
 Pocket Square #H613



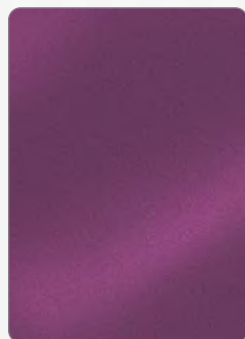
Desert Blue
 Vest Style #V523
 Windsor Tie #F523
 Bow Tie #B523
 Pocket Square #H523



Ocean
 Vest Style #V653
 Windsor Tie #F653
 Bow Tie #B653
 Pocket Square #H653



PV Marine
 Vest Style #V663
 Windsor Tie #F663
 Bow Tie #B663
 Pocket Square #H663



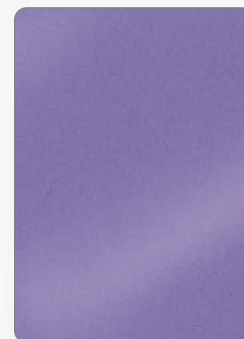
Fino Magenta
 Vest Style #V664
 Windsor Tie #F664
 Bow Tie #B664
 Pocket Square #H664



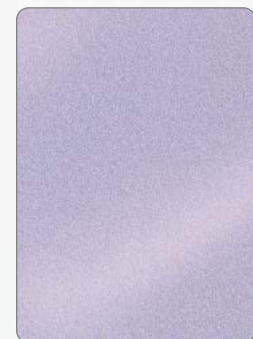
Majestic Purple
 Vest Style #V617
 Windsor Tie #F617
 Bow Tie #B617
 Pocket Square #H617



Lapis
 Vest Style #V637
 Windsor Tie #F637
 Bow Tie #B637
 Pocket Square #H637



Porto Violet
 Vest Style #V567
 Windsor Tie #F567
 Bow Tie #B567
 Pocket Square #H567



Pretty Lilac
 Vest Style #V507
 Windsor Tie #F507
 Bow Tie #B507
 Pocket Square #H507

Tweed

Full Back Vest

Size	Fits Coat Size(s)
S	18 - 38
M	39 - 42
L	43 - 44
XL	46 - 48
2XL	50 - 52
3XL	54 - 56
4XL	58+

Full Back Vest

BS	3 - 6
BM	7 - 12
BL	14 - 16

Available in:

- Vest
- Bow Tie
- Windsor Tie
- Pocket Square



Gray

Vest #V101
Windsor Tie #F101
Bow Tie #B101
Pocket Square #H101



Tan

Vest #V105
Windsor Tie #F105
Bow Tie #B105
Pocket Square #H105



Beige

Vest #V109
Windsor Tie #F109
Bow Tie #B109
Pocket Square #H109



Calby



Black
Windsor Tie #F702
Bow Tie #B702
Pocket Square #H702



Graphite
Windsor Tie #F731
Bow Tie #B731
Pocket Square #H731



Platinum
Windsor Tie #F701
Bow Tie #B701
Pocket Square #H701

- Available in:**
- Windsor Tie
 - Bow Tie
 - Pocket Square



White
Windsor Tie #F700
Bow Tie #B700
Pocket Square #H700



Ivory
Windsor Tie #F709
Bow Tie #B709
Pocket Square #H709



Portobello
Windsor Tie #F722
Bow Tie #B722
Pocket Square #H722



Blush
Windsor Tie #F704
Bow Tie #B704
Pocket Square #H704



Rose Gold
Windsor Tie #F742
Bow Tie #B742
Pocket Square #H742



AZ Dusty Rose
Windsor Tie #F714
Bow Tie #B714
Pocket Square #H714



Quartz
Windsor Tie #F715
Bow Tie #B715
Pocket Square #H715



Apple
Windsor Tie #F726
Bow Tie #B726
Pocket Square #H726



Burgundy
Windsor Tie #F736
Bow Tie #B736
Pocket Square #H736



Cinnamon
Windsor Tie #F725
Bow Tie #B725
Pocket Square #H725



Cognac
Windsor Tie #F705
Bow Tie #B705
Pocket Square #H705



Forest Green
Windsor Tie #F738
Bow Tie #B738
Pocket Square #H738



Hunter
Windsor Tie #F748
Bow Tie #B748
Pocket Square #H748



Meadow
Windsor Tie #F758
Bow Tie #B758
Pocket Square #H758



Desert Blue
Windsor Tie #F723
Bow Tie #B723
Pocket Square #H723



Serene
Windsor Tie #F733
Bow Tie #B733
Pocket Square #H733



Cobalt
Windsor Tie #F763
Bow Tie #B763
Pocket Square #H763



Dark Navy
Windsor Tie #F724
Bow Tie #B724
Pocket Square #H724

Simply Solid

Available in:

- Thin Stripe Windsor Tie
- Pocket Square

Neon Lime and Neon Orange also available in fullback vests



White
Windsor Tie #F300
Pocket Square #H300



Mercury
Windsor Tie #F301
Pocket Square #H301



Charcoal
Windsor Tie #F311
Pocket Square #H311



Black
Windsor Tie #F302
Pocket Square #H302



Quartz
Windsor Tie #F315
Pocket Square #H315



Blush
Windsor Tie #F304
Pocket Square #H304



Salmon
Windsor Tie #F314
Pocket Square #H314



Sunset
Windsor Tie #F306
Pocket Square #H306



Merlot (Solid)
Windsor #W366
Pocket Square #HS66



Merlot
Windsor #F366
Pocket Square #H366



Cassis
Windsor Tie #F317
Pocket Square #H317



Purple Storm
Windsor Tie #F307
Pocket Square #H307



Marine
Windsor #F383
Pocket Sq. #H383



Steel Blue (Solid)
Windsor Tie #W353
Bow Tie #S353
Pocket Square #H353



Desert Blue
Windsor Tie #F323
Pocket Square #H323



Mint
Windsor Tie #F308
Pocket Square #H308



Shown with:
Satin Vest - Baja Aqua #V678
Simply Solid Tie - Mint #F308



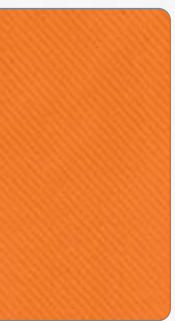
Diamond White
Windsor Tie #F309
Pocket Square #H309



Golden
Windsor #F389
Pocket Sq. #H389



Neon Orange
Windsor Tie #F316
Pocket Square #H316



Neon Orange
Vest Style #V316
Windsor Tie #W316
Bow Tie #S316
Pocket Square #HS16



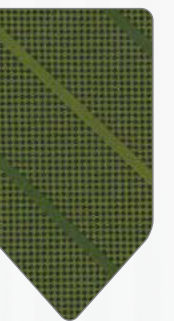
Neon Lime
Windsor Tie #F318
Pocket Square #H318



Neon Lime
Vest Style #V318
Windsor Tie #W318
Bow Tie #S318
Pocket Square #HS18



Tarragon
Windsor Tie #F348
Pocket Square #H348



Moss
Windsor Tie #F388
Pocket Square #H388



Eucalyptus (Solid)
Windsor Tie #F368
Bow Tie #B368
Pocket Square #H368

Blossam Floral



White
Windsor Tie #F860
Bow Tie #B860
Pocket Square #H860



Heather
Windsor Tie #F867
Bow Tie #B867
Pocket Square #H867



Steel
Windsor Tie #F861
Bow Tie #B861
Pocket Square #H861



Black
Windsor Tie #F862
Bow Tie #B862
Pocket Square #H862



Diamond White
Windsor Tie #F869
Bow Tie #B869
Pocket Square #H869



Golden/Champagne
Windsor Tie #F885
Bow Tie #B885
Pocket Square #H885



Sandstone
Windsor Tie #F865
Bow Tie #B865
Pocket Square #H865



Dark Sandstone
Windsor Tie #F875
Bow Tie #B875
Pocket Square #H875



- Available in:**
- Windsor Tie
 - Bow Tie
 - Pocket Square



Bridal Pink
Windsor Tie #F874
Bow Tie #B874
Pocket Square #H874



Rose Gold
Windsor Tie #F884
Bow Tie #B884
Pocket Square #H884



Pink Burgundy
Windsor Tie #F876
Bow Tie #B876
Pocket Square #H876



Light Pink
Windsor Tie #F864
Bow Tie #B864
Pocket Square #H864



Dark Greige
Windsor Tie #F895
Bow Tie #B895
Pocket Square #H895



Bridal Blue
Windsor Tie #F894
Bow Tie #B894
Pocket Square #H894



Light Blue
Windsor Tie #F893
Bow Tie #B893
Pocket Square #H893



Lilac
Windsor Tie #F887
Bow Tie #B887
Pocket Square #H887



Burgundy
Windsor Tie #F866
Bow Tie #B866
Pocket Square #H866



Burnt Orange
Windsor Tie #F886
Bow Tie #B886
Pocket Square #H886



Hunter
Windsor Tie #F868
Bow Tie #B868
Pocket Square #H868



Steel/Waterfall
Windsor Tie #F878
Bow Tie #B878
Pocket Square #H878



Navy
Windsor Tie #F873
Bow Tie #B873
Pocket Square #H873



Black Royal
Windsor Tie #F883
Bow Tie #B883
Pocket Square #H883



Cobalt
Windsor Tie #F863
Bow Tie #B863
Pocket Square #H863



Blue Violet
Windsor Tie #F877
Bow Tie #B877
Pocket Square #H877

Mossy Oak Break-Up

Camouflage



Green Camouflage

Vest #V245 Bow Tie #S245 Shirt #310
(Not Shown) Windsor Tie #F245 Pocket Square #H245



White Camouflage

Vest #V240 Windsor #F240 Shirt N/A
(Not Shown) Bow Tie #S240 Pocket Square #H240

Full Back Vest

Size	Fits Coat Size(s)
S	18 - 38
M*	39 - 42
L*	43 - 44
XL*	46 - 48
2XL	50 - 52
3XL	54 - 56

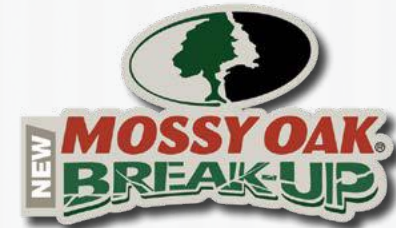
Available in:

- Vest
- Bow Tie
- Windsor Tie
- Pocket Square

* Long Vests Available

Open Back Vest

BS	3 - 6
BM	7 - 12
BL	14 - 16
4XL	58+



Santana

Destination

Full Back Vest

Size	Fits Coat Size(s)
S	18 - 38
M	39 - 42
L	43 - 44
XL	46 - 48
2XL	50 - 52
3XL	54 - 56

Open Back Vest

BS	3 - 10
BL	12 - 16
4XL	56+

Available in:

- Vest
- Windsor Tie
- Bow Tie
- Pocket Square



Vest #M246
Windsor Tie #F246
Bow Tie #S246
Pocket Square #H246



Vest #M247
Windsor Tie #F247
Bow Tie #S247
Pocket Square #H247



Vest #M248
Windsor Tie #F248
Bow Tie #S248
Pocket Square #H248

Metallics

Full Back Vest

Size	Fits Coat Size(s)
S	18 - 38
M	39 - 42
L	43 - 44
XL	46 - 48
2XL	50 - 52
3XL	54 - 56

Open Back Vest

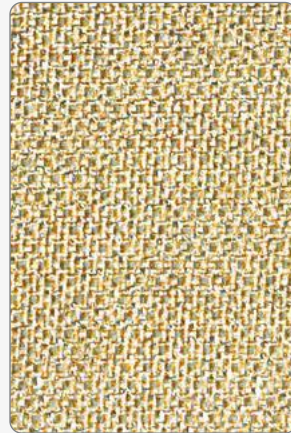
BS	3 - 6
BM	7 - 12
BL	14 - 16
4XL	58+

Available in:

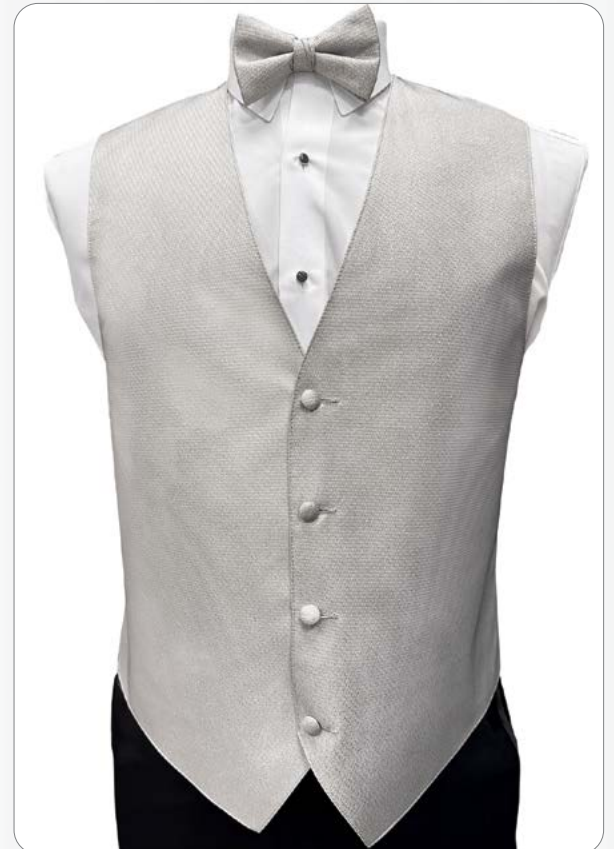
- Vests
- Bow Ties
- Windsor Ties
- Pocket Squares



Silver Metallic
Vest #V811
Bow Tie #B811
Pocket Square #H811



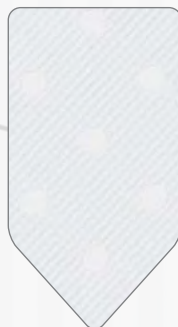
Gold Metallic
Vest #V819
Bow Tie #B819
Pocket Square #H819



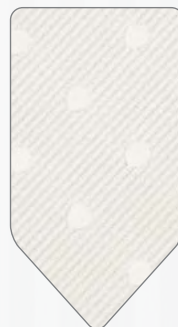
Tonal Dot

Available in:

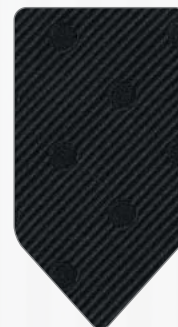
- Windsor Tie
- Bow Tie
- Pocket Square



White
Windsor Tie #F840
Bow Tie #B840
Pocket Square #H840



Diamond White
Windsor Tie #F849
Bow Tie #B849
Pocket Square #H849



Black
Windsor Tie #F842
Bow Tie #B842
Pocket Square #H842



Charcoal
Windsor Tie #F841
Bow Tie #B841
Pocket Square #H841



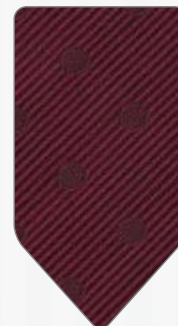
Slate
Windsor Tie #F853
Bow Tie #B853
Pocket Square #H853



Blush
Windsor Tie #F854
Bow Tie #B854
Pocket Square #H854



Ferrari Red
Windsor Tie #F856
Bow Tie #B856
Pocket Square #H856



Wine
Windsor Tie #F846
Bow Tie #B846
Pocket Square #H846



Plum
Windsor Tie #F847
Bow Tie #B847
Pocket Square #H847



Royal
Windsor Tie #F843
Bow Tie #B843
Pocket Square #H843

Pink represents friendship, affection, harmony, inner peace, and approachability.



**Blossom Floral -
Bridal Pink**
Windsor #F874
Bow Tie #B874
Pocket Square #H874



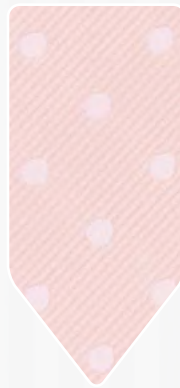
**Blossom Floral -
Rose Gold**
Windsor #F884
Bow Tie #B884
Pocket Square #H884



Colby - Rose Gold
Windsor #F742
Bow Tie #B742
Pocket Square #H742



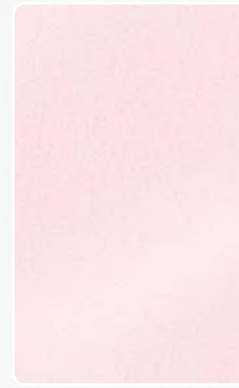
Colby - Blush
Windsor #F704
Bow Tie #B704
Pocket Square #H704



Allure Dot - Blush
Windsor #F854
Bow Tie #B854
Pocket Square #H854



**Simply Solid -
Blush**
Windsor #F304
Pocket Square #H304



Satin - Paradise Pink
Vest #V504
Windsor #F504
Bow Tie #B504
Pocket Square #H504



Satin - BL Pink
Vest #V514
Windsor #F514
Bow Tie #B514
Pocket Square #H514



**Blossom Floral -
Pink Burgundy**
Windsor #F876
Bow Tie #B876
Pocket Square #H876



**Blossom Floral -
Light Pink**
Windsor #F864
Bow Tie #B864
Pocket Square #H864



Colby - Quartz
Windsor #F715
Bow Tie #B715
Pocket Square #H715



**Simply Solid -
Quartz**
Windsor #F315
Pocket Square #H315



Satin - Quartz
Vest #V615
Windsor #F615
Bow Tie #B615
Pocket Square #H615



Satin - Winter Melon
Vest #V697
Windsor #F697
Bow Tie #B697
Pocket Square #H697



**Colby -
AZ Dusty Rose**
Windsor #F714
Bow Tie #B714
Pocket Square #H714



Rosewood - Satin
Vest #V544
Windsor #F544
Bow Tie #B544
Pocket Square #H544



**Simply Solid -
Sunset**
Windsor #F306
Pocket Square #H306



Satin - Shrimp Toast
Vest #V604
Windsor #F604
Bow Tie #B604
Pocket Square #H604



**Allure Dot -
Ferrari Red**
Windsor #F856
Bow Tie #B856
Pocket Square #H856



Satin - Capri Red
Vest #V506
Windsor #F506
Bow Tie #B506
Pocket Square #H506



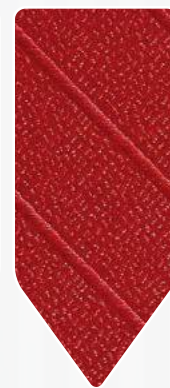
**Ombre
Ruby Red**
Windsor #T429
PS n/a (use H506)



**Paisley
Ruby Red**
Windsor #FP29



**Solid
Ruby Red**
Windsor #FS29

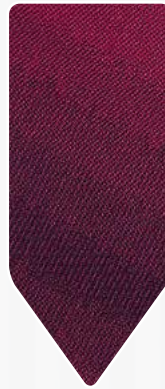


**Stripe
Ruby Red**
Windsor #F429



Portofino - Ruby Red
Vest #M429
Bow Tie #S429
PS n/a (use H506)

Red represents joy, passion, sensitivity and love.



Ombre Passion
Windsor #T455
Pocket Sq. #HT55



Paisley Passion
Windsor #FP55



Solid Passion
Windsor #FS55



Stripe Passion
Windsor #F455



Portofino - Passion
Vest #M455
Bow Tie #S455
Pocket Square #H455



Simply Solid - Merlot (Solid)
Windsor #W366
Pocket Square #HS66



Simply Solid - Merlot (Stripe)
Windsor #F366
Pocket Square #H366



Satin - Fino Claret
Vest #V526
Windsor #F526
Bow Tie #B526
Pocket Square #H526



Ombre Apple
Windsor #T426
Pocket Sq. #HT26



Paisley Apple
Windsor #FP26



Solid Apple
Windsor #FS26



Stripe Apple
Windsor #F426



Portofino - Apple
Vest #M426
Bow Tie #S426
Pocket Square #H426



Colby - Apple
Windsor #F726
Bow Tie #B726
Pocket Square #H726



Allure Dot - Wine
Windsor #F846
Bow Tie #B846
Pocket Square #H846



Satin - Wine
Vest #V684
Windsor #F684
Bow Tie #B684
Pocket Square #H684



Ombre Wine
Windsor #T466
Pocket Sq. n/a



Paisley Wine
Windsor #FP66



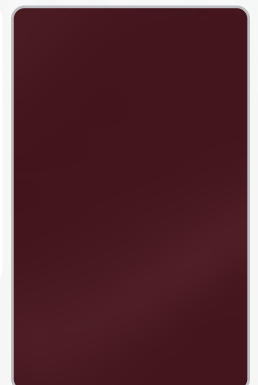
Wine - Portofino
Vest #M466
Bow Tie #S466
PS n/a (use H636)



Blossom Floral - Burgundy
Windsor #F866
Bow Tie #B866
Pocket Square #H866



Colby - Burgundy
Windsor #F736
Bow Tie #B736
Pocket Square #H736



Fino Burgundy - Satin
Vest #V636
Windsor #F636
Bow Tie #B636
Pocket Square #H636

Coral encourages great communication and conversation



Orange corresponds to creativity, desire, warmth, ambition and generosity



Simply Solid - Neon Orange
Windsor #F316
Pocket Square #H316



Ombre Tangerine
Windsor #T475
Pocket Sq. #HT75



Paisley Tangerine
Windsor #FP75



Solid Tangerine
Windsor #FS75



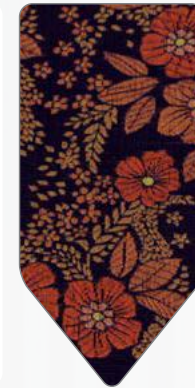
Stripe Tangerine
Windsor #F475



Portofino - Tangerine
Vest #M475
Bow Tie #S475
Pocket Square #H475



Satin - Sun Coral
Vest #V576
Windsor #F576
Bow Tie #B576
Pocket Square #H576



Blossom Floral - Burnt Orange
Windsor #F886
Bow Tie #B886
Pocket Square #H886



Fino Copper
Vest Style #V626
Windsor Tie #F626
Bow Tie #B626
Pocket Square #H626



Ombre Persimmon
Windsor #T416
Pocket Sq. #HT16



Paisley Persimmon
Windsor #FP16



Solid Persimmon
Windsor #FS16



Stripe Persimmon
Windsor #F416



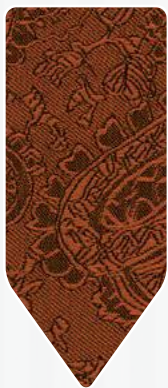
Portofino - Persimmon
Vest #M416
Bow Tie #S416
Pocket Square #H416



Colby - Cinnamon
Windsor #F725
Bow Tie #B725
Pocket Square #H725



Ombre Cinnamon
Windsor #T406
Pocket Sq. #HT06



Paisley Cinnamon
Windsor #FP06



Solid Cinnamon
Windsor #FS06



Stripe Cinnamon
Windsor #F406



Portofino - Cinnamon
Vest #M406
Bow Tie #S406
Pocket Square #H406



Colby - Cognac
Windsor #F705
Bow Tie #B705
Pocket Square #H705



Green is associated with ambition and nature.



Colby - Meadow
Windsor #F758
Bow Tie #B758
Pocket Square #H758



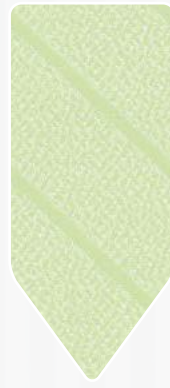
Ombre Honeydew
Windsor #T465
Pocket Sq. #HT65



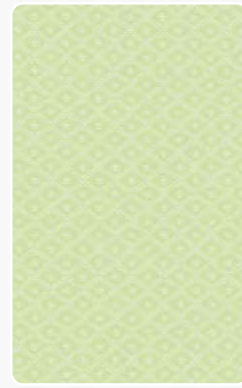
Paisley Honeydew
Windsor #FP65



Solid Honeydew
Windsor #FS65



Stripe Honeydew
Windsor #F465



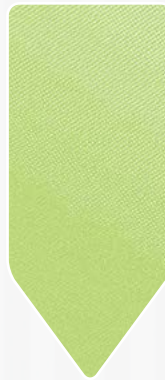
Portofino - Honeydew
Vest #M465
Bow Tie #S465
Pocket Square #H465



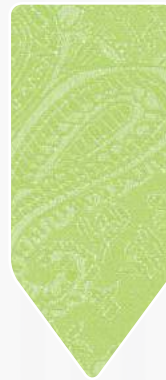
Simply Solid - Neon Lime
Windsor #F318
Pocket Square #H318



Simply Solid - Neon Lime
Vest #V318
Bow Tie #S318
Windsor Tie #W318
Pocket Square #HS18



Ombre Lime
Windsor #T449
Pocket Sq. #HT49



Paisley Lime
Windsor #FP49



Solid Lime
Windsor #FS49



Stripe Lime
Windsor #F449



Portofino - Lime
Vest #M449
Bow Tie #S449
Pocket Square #H449



PHOTOS BY:
KLEM STUDIO PHOTOGRAPHY

Green is associated with good luck, success and generosity



Satin - Rio Lime
Vest #V548
Windsor #F548
Bow Tie #B548
Pocket Square #H548



Satin - Kiwi
Vest #V568
Windsor #F568
Bow Tie #B568
Pocket Square #H568



Satin - Capri Green
Vest #V588
Windsor #F588
Bow Tie #B588
Pocket Square #H588



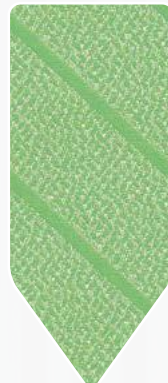
Ombre Kelly Green
Windsor #T432
Pocket Sq. #HT32



Paisley Kelly Green
Windsor #FP32



Solid Kelly Green
Windsor #FS32



Stripe Kelly Green
Windsor #F432



Portofino - Kelly Green
Vest #M432
Bow Tie #S432
Pocket Square #H432



PHOTOS BY:
KLEM STUDIO PHOTOGRAPHY



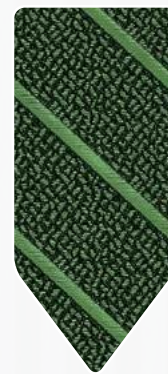
Ombre Clover
Windsor #T418
Pocket Sq. #HT18



Paisley Clover
Windsor #FP18



Solid Clover
Windsor #FS18



Stripe Clover
Windsor #F418



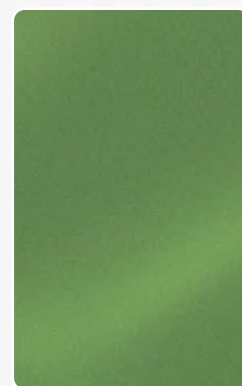
Portofino - Clover
Vest #M418
Bow Tie #S418
Pocket Square #H418



Satin - Celadon
Vest #V608
Windsor #F608
Bow Tie #B608
Pocket Square #H608



Satin - Light Olive
Vest #V558
Windsor #F558
Bow Tie #B558
Pocket Square #H558



Satin - Clover
Vest #V578
Windsor #F578
Bow Tie #B578
Pocket Square #H578



Simply Solid - Eucalyptus
Windsor #F368
Bow Tie #B368
Pocket Square #H368

Sage represents experience, judgment and wisdom



Camouflage - Mossy Oak
 Vest #V245
 Windsor #F245
 Bow Tie #S245
 Pocket Square #H245



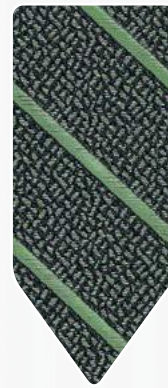
Ombre Sage
 Windsor #T482
 Pocket Sq. #HT82



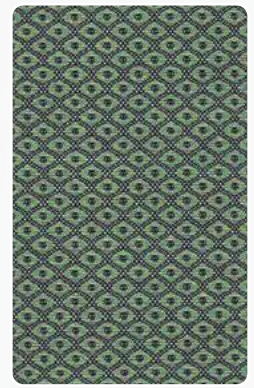
Paisley Sage
 Windsor #FP82



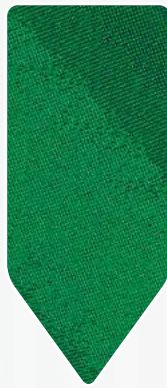
Solid Sage
 Windsor #FS82



Stripe Sage
 Windsor #F482



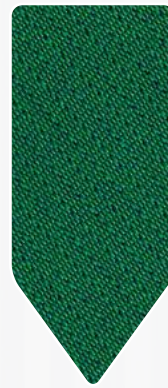
Portofino - Sage
 Vest #M482
 Bow Tie #S482
 Pocket Square #H482



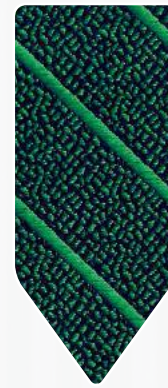
Ombre Jade Green
 Windsor #T451
 Pocket Sq. #HT51



Paisley Jade Green
 Windsor #FP51



Solid Jade Green
 Windsor #FS51



Stripe Jade Green
 Windsor #F451



Portofino - Jade Green
 Vest #M451
 Bow Tie #S451
 Pocket Square #H451



PHOTOS BY:
KLEM STUDIO PHOTOGRAPHY

Olive is the traditional color of peace and adventure



Ombre Fern
Windsor #T438
Pocket Sq. #HT38



Paisley Fern
Windsor #FP38



Solid Fern
Windsor #FS38



Stripe Fern
Windsor #F438



Portofino - Fern
Vest #M438
Bow Tie #S438
Pocket Square #H438



Ombre Olive
Windsor #T462
Pocket Sq. #HT62



Paisley Olive
Windsor #FP62



Solid Olive
Windsor #FS62



Stripe Olive
Windsor #F462



Portofino - Olive
Vest #M462
Bow Tie #S462
Pocket Square #H462



Simply Solid - Moss
Windsor #F388
Pocket Square #H388



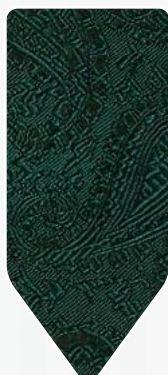
Simply Solid - Tarragon
Windsor #F348
Pocket Square #H348



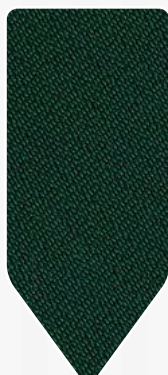
Blossom Floral - Hunter
Windsor Tie #F868
Bow Tie #B868
Pocket Square #H868



Ombre Holly
Windsor #T452
Pocket Sq. #HT52



Paisley Holly
Windsor #FP52



Solid Holly
Windsor #FS52



Stripe Holly
Windsor #F452



Portofino - Holly
Vest #M452
Bow Tie #S452
Pocket Square #H452



Colby - Hunter
Windsor #F748
Bow Tie #B748
Pocket Square #H748



Colby - Forest
Windsor #F738
Bow Tie #B738
Pocket Square #H738



Satin - Bali Hunter
Vest #V648
Windsor #F648
Bow Tie #B648
Pocket Square #H648

Turquoise represents friendship, communication and love



PHOTOS BY:
NICOLE MIRO PHOTOGRAPHY



Satin - Riviera Turquoise
Vest #V543
Windsor #F543
Bow Tie #B543
Pocket Square #H543



Ombre Turquoise
Windsor #T460
Pocket Sq. #HT60



Paisley Turquoise
Windsor #FP60



Solid Turquoise
Windsor #FS60



Stripe Turquoise
Windsor #F460



Portofino - Turquoise
Vest #M460
Bow Tie #S460
Pocket Square #H460



Satin Premium Turquoise
Vest #V573
Windsor #F573
Bow Tie #B573
Pocket Square #H573



Ombre Pool
Windsor #T411
Pocket Sq. #HT11



Paisley Pool
Windsor #FP11



Solid Pool
Windsor #FS11



Stripe Pool
Windsor #F411



Portofino - Pool
Vest #M411
Bow Tie #S411
Pocket Square #H411



Ombre Sky Blue
Windsor #T403
Pocket Sq. #HT03



Paisley Sky Blue
Windsor #FP03



Solid Sky Blue
Windsor #FS03



Stripe Sky Blue
Windsor #F403



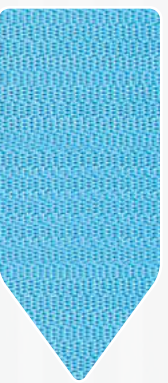
Portofino - Sky Blue
Vest #M403
Bow Tie #S403
Pocket Square #H403



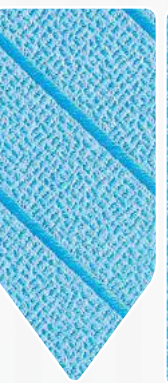
Ombre Blue Ice
Windsor #T443
Pocket Sq. #HT43



Paisley Blue Ice
Windsor #FP43



Solid Blue Ice
Windsor #FS43

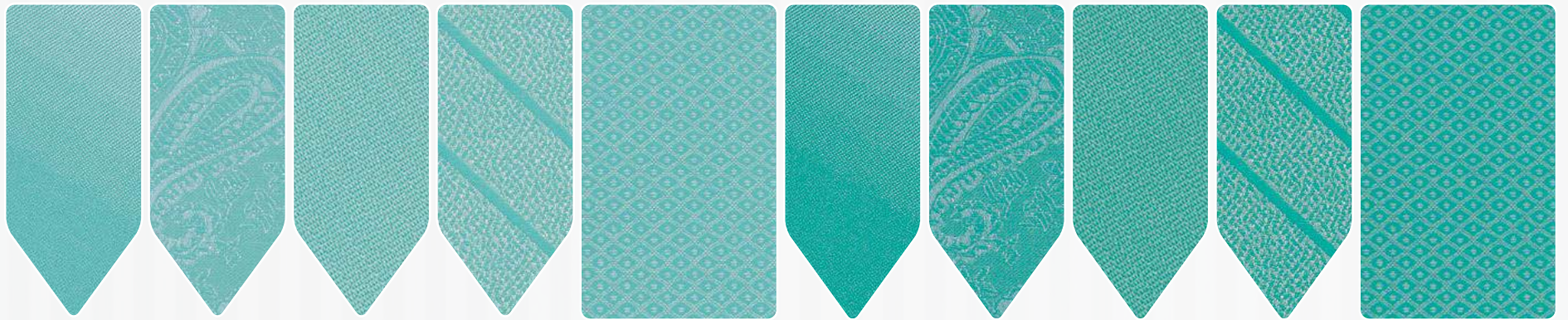


Stripe Blue Ice
Windsor #F443



Portofino - Blue Ice
Vest #M443
Bow Tie #S443
Pocket Square #H443

Aqua is refreshing, uplifting, creative and light-hearted



Ombre Aqua
Windsor #T408
Pocket Sq. #HT08

Paisley Aqua
Windsor #FP08

Solid Aqua
Windsor #FS08

Stripe Aqua
Windsor #F408

Portofino - Aqua
Vest #M408
Bow Tie #S408
Pocket Square #H408

Ombre Mermaid
Windsor #T461
Pocket Sq. #HT61

Paisley Mermaid
Windsor #FP61

Solid Mermaid
Windsor #FS61

Stripe Mermaid
Windsor #F461

Portofino - Mermaid
Vest #M461
Bow Tie #S461
Pocket Square #H461



Simply Solid - Mint
Windsor #F308
Pocket Square #H308

Satin - Baja Aqua
Vest #V678
Windsor #F678
Bow Tie #B678
Pocket Square #H678

Satin - Fino Jade
Vest #V688
Windsor #F688
Bow Tie #B688
Pocket Square #H688

Ombre Peacock
Windsor #T492
Pocket Sq. #HT92

Paisley Peacock
Windsor #FP92

Solid Peacock
Windsor #FS92

Stripe Peacock
Windsor #F492

Portofino - Peacock
Vest #M492
Bow Tie #S492
Pocket Square #H492

Satin - Night Teal
Vest #V552
Windsor #F552
Bow Tie #B552
Pocket Square #H552



PHOTOS BY:
NICOLE MIRO PHOTOGRAPHY



Blossom Floral - Steel/Waterfall
Windsor #F878
Bow Tie #B878
Pocket Sq. #H878

Ombre Oasis
Windsor #T421
Pocket Sq. #HT21

Paisley Oasis
Windsor #FP21

Solid Oasis
Windsor #FS21

Stripe Oasis
Windsor #F421

Portofino - Oasis
Vest #M421
Bow Tie #S421
Pocket Square #H421

Dark Blue represents knowledge, power, integrity and confidence



Ombre Aqua Marine
Windsor #T422
PS n/a (use #H422)



Paisley Aqua Marine
Windsor #FP22



Solid Aqua Marine
Windsor #FS22



Stripe Aqua Marine
Windsor #F422



Portofino - Aqua Marine
Vest #M422
Bow Tie #S422
Pocket Square #H422



Satin - Ocean
Vest #V653
Windsor #F653
Bow Tie #B653
Pocket Square #H653



Destination - Blue/White
Vest #M247
Windsor #F247
Bow Tie #S247
Pocket Square #H247



Destination - Blue/Black
Vest #M248
Windsor #F248
Bow Tie #S248
Pocket Square #H248



Blossom Floral - Black Royal
Windsor #F883
Bow Tie #B883
Pocket Sq. #H883



Blossom Floral - Navy
Windsor #F873
Bow Tie #B873
Pocket Sq. #H873



Satin - PV Royal
Vest #V613
Windsor #F613
Bow Tie #B613
Pocket Square #H613



Blossom Floral - Cobalt
Windsor #F863
Bow Tie #B863
Pocket Square #H863



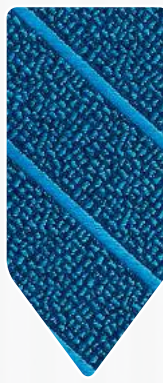
Ombre Marine Blue
Windsor #T439
Pocket Sq. #HT39



Paisley Marine Blue
Windsor #FP39



Solid Marine Blue
Windsor #FS39



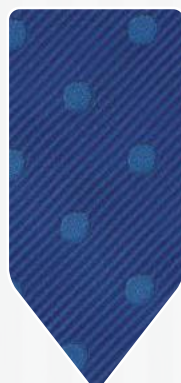
Stripe Marine Blue
Windsor #F439



Portofino - Marine Blue
Vest #M439
Bow Tie #S439
Pocket Square #H439



Colby - Cobalt
Windsor #F763
Bow Tie #B763
Pocket Square #H763



Allure Dot - Royal
Windsor #F843
Bow Tie #B843
Pocket Square #H843



Ombre Royal Blue
Windsor #T413
Pocket Sq. #HT13



Paisley Royal Blue
Windsor #FP13



Solid Royal Blue
Windsor #FS13



Stripe Royal Blue
Windsor #F413



Portofino - Royal Blue
Vest #M413
Bow Tie #S413
Pocket Square #H413



Satin - PV Marine
Vest #V663
Windsor #F663
Bow Tie #B663
Pocket Square #H663



Simply Solid - Marine
Windsor #F383
Pocket Square #H383

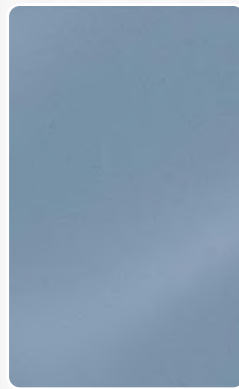
Periwinkle inspires creativity, freedom and peace



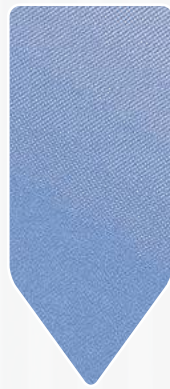
Colby - Desert Blue
Windsor #F723
Bow Tie #B723
Pocket Square #H723



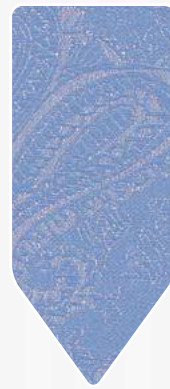
Simply Solid - Desert Blue
Windsor #F323
Pocket Square #H323



Satin - Desert Blue
Vest #V523
Windsor #F523
Bow Tie #B523
Pocket Square #H523



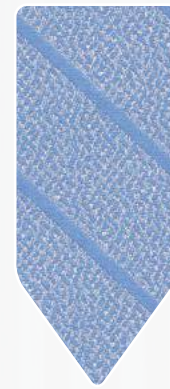
Ombre Cornflower
Windsor #T423
Pocket Sq. #HT23



Paisley Cornflower
Windsor #FP23



Solid Cornflower
Windsor #FS23



Stripe Cornflower
Windsor #F423



Portofino - Cornflower
Vest #M423
Bow Tie #S423
Pocket Square #H423



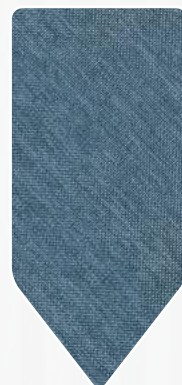
Blossom Floral - Dark Greige
Windsor #F895
Bow Tie #B895
Pocket Sq. #H895



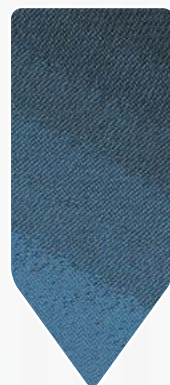
Blossom Floral - Bridal Blue
Windsor #F894
Bow Tie #B894
Pocket Sq. #H894



Blossom Floral - Light Blue
Windsor #F893
Bow Tie #B893
Pocket Sq. #H893



Colby - Serene
Windsor #F733
Bow Tie #B733
Pocket Square #H733



Ombre Serene
Windsor #T433
Pocket Sq. #HT33



Paisley Serene
Windsor #FP33



Solid Serene
Windsor #FS33



Stripe Serene
Windsor #F433



Portofino - Serene
Vest #M433
Bow Tie #S433
Pocket Square #H433



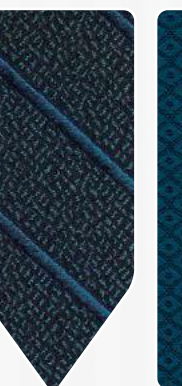
Ombre Dark Peacock
Windsor #T446
Pocket Sq. #HT46



Paisley Dark Peacock
Windsor #FP46



Solid Dark Peacock
Windsor #FS46



Stripe Dark Peacock
Windsor #F446



Portofino - Dark Peacock
Vest #M446
Bow Tie #S446
Pocket Square #H446



Allure Dot - Slate
Windsor #F853
Bow Tie #B853
Pocket Square #H853



Simply Solid - Steel Blue
Windsor #W353
Bow Tie #S353
Pocket Square #H353



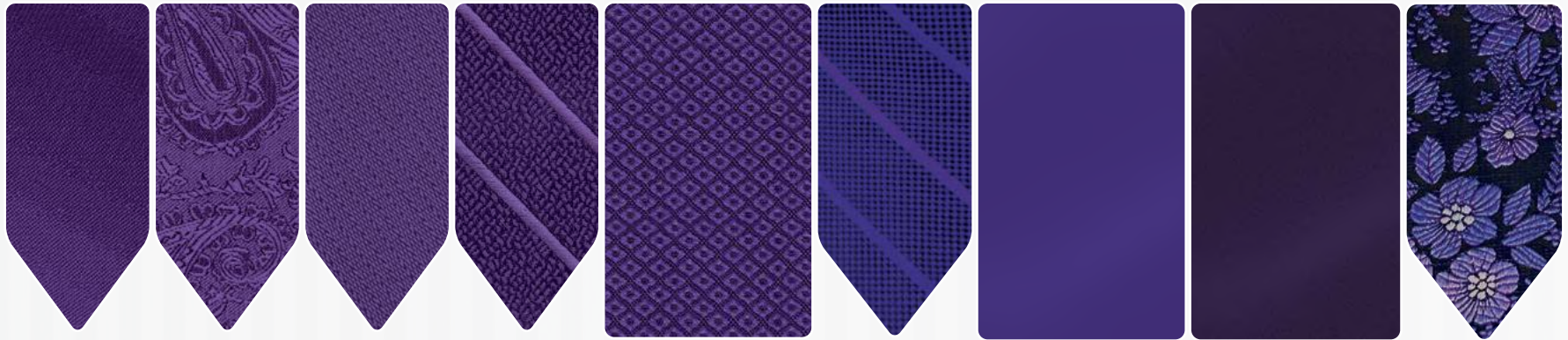
Colby - Dark Navy
Windsor #F724
Bow Ties #B724
Pocket Square #H724



FCGI - Navy
Windsor #F243
Bow Tie #B243
Pocket Square #H243

Light Blue signifies health, healing, tranquility, security and trust

Purple symbolizes power, nobility and luxury



Ombre Purple
Windsor #T407
PS n/a (use #H607)

Paisley Purple
Windsor #FP07

Solid Purple
Windsor #FS07

Stripe Purple
Windsor #F407

Portofino - Purple
Vest #M407
Bow Tie #S407
Pocket Square #H407

Simply Solid - Purple Storm
Windsor #F307
Pocket Square #H307

Satin - Majestic Purple
Vest #V617
Windsor #F617
Bow Tie #B617
Pocket Square #H617

Satin - Lapis
Vest #V637
Windsor #F637
Bow Tie #B637
Pocket Square #H637

Blossom Floral - Blue Violet
Windsor #F877
Bow Tie #B877
Pocket Sq. #H877



Ombre Wisteria
Windsor #T485
Pocket Sq. #HT85

Paisley Wisteria
Windsor #FP85

Solid Wisteria
Windsor #FS85

Stripe Wisteria
Windsor #F485

Portofino - Wisteria
Vest #M485
Bow Tie #S485
Pocket Square #H485

Ombre Victorian Lilac
Windsor #T417
Pocket Sq. #HT17

Paisley Victorian Lilac
Windsor #FP17

Solid Victorian Lilac
Windsor #FS17

Stripe Victorian Lilac
Windsor #F417

Portofino - Victorian Lilac
Vest #M417
Bow Tie #S417
Pocket Square #H417



Blossom Floral - Lilac
Windsor #F887
Bow Tie #B887
Pocket Sq. #H887

Satin - Pretty Lilac
Vest #V507
Windsor #F507
Bow Tie #B507
Pocket Square #H507

Ombre Jasmine
Windsor #T450
Pocket Sq. #HT50

Paisley Jasmine
Windsor #FP50

Solid Jasmine
Windsor #FS50

Stripe Jasmine
Windsor #F450

Portofino - Jasmine
Vest #M450
Bow Tie #S450
Pocket Square #H450

Satin - Porto Violet
Vest #V567
Windsor #F567
Bow Tie #B567
Pocket Square #H567

Purple represents ambition, wisdom and spirituality



Fuchsia inspires confidence, assurance, maturity and love



Ombre Azalea
Windsor #T444
Pocket Sq. #HT44

Paisley Azalea
Windsor #FP44

Solid Azalea
Windsor #FS44

Stripe Azalea
Windsor #F444

Portofino - Azalea
Vest #M444
Bow Tie #S444
Pocket Square #H444

Ombre Fuchsia
Windsor #T404
Pocket Sq. #HT04

Paisley Fuchsia
Windsor #FP04

Solid Fuchsia
Windsor #FS04

Stripe Fuchsia
Windsor #F404

Portofino - Fuchsia
Vest #M404
Bow Tie #S404
Pocket Square #H404



Satin - Watermelon
Vest #V634
Windsor #F634
Bow Tie #B634
Pocket Square #H634



Ombre Watermelon
Windsor #T414
Pocket Sq. #HT14



Paisley Watermelon
Windsor #FP14



Solid Watermelon
Windsor #FS14



Stripe Watermelon
Windsor #F414



Portofino - Watermelon
Vest #M414
Bow Tie #S414
Pocket Square #H414



PHOTOS BY:
REMINISCE PHOTOGRAPHY

Violet inspires compassion, kindness and a love of humanity



Satin - PV Cerise
Vest #V624
Windsor #F624
Bow Tie #B624
Pocket Square #H624



Ombre Sangria
Windsor #T473
Pocket Sq. #HT73



Paisley Sangria
Windsor #FP73



Solid Sangria
Windsor #FS73



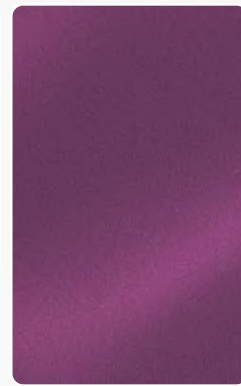
Stripe Sangria
Windsor #F473



Portofino - Sangria
Vest #M473
Bow Tie #S473
Pocket Square #H473



Simply Solid - Cassis
Windsor #F317
Pocket Square #H317



Satin - Fino Magenta
Vest #V664
Windsor #F664
Bow Tie #B664
Pocket Square #H664



Allure Dot - Plum
Windsor #F847
Bow Tie #B847
Pocket Square #H847



Ombre Violet
Windsor #T453
Pocket Sq. #HT53



Paisley Violet
Windsor #FP53



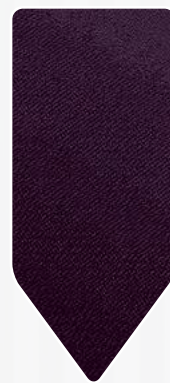
Solid Violet
Windsor #FS53



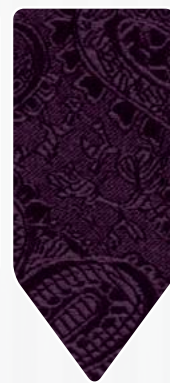
Stripe Violet
Windsor #F453



Portofino - Violet
Vest #M453
Bow Tie #S453
Pocket Square #H453



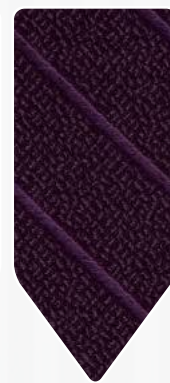
Ombre Plum
Windsor #T440
Pocket Sq. #HT40



Paisley Plum
Windsor #FP40



Solid Plum
Windsor #FS40



Stripe Plum
Windsor #F440



Portofino - Plum
Vest #M440
Bow Tie #S440
Pocket Square #H440

White is associated with light, goodness, innocence, perfection and purity



Colby - White
Windsor #F700
Bow Tie #B700
Pocket Square #H700

Ombre White
Windsor #T400
Pocket Sq. #HT00

Paisley White
Windsor #FP00

Solid White
Windsor #FS00

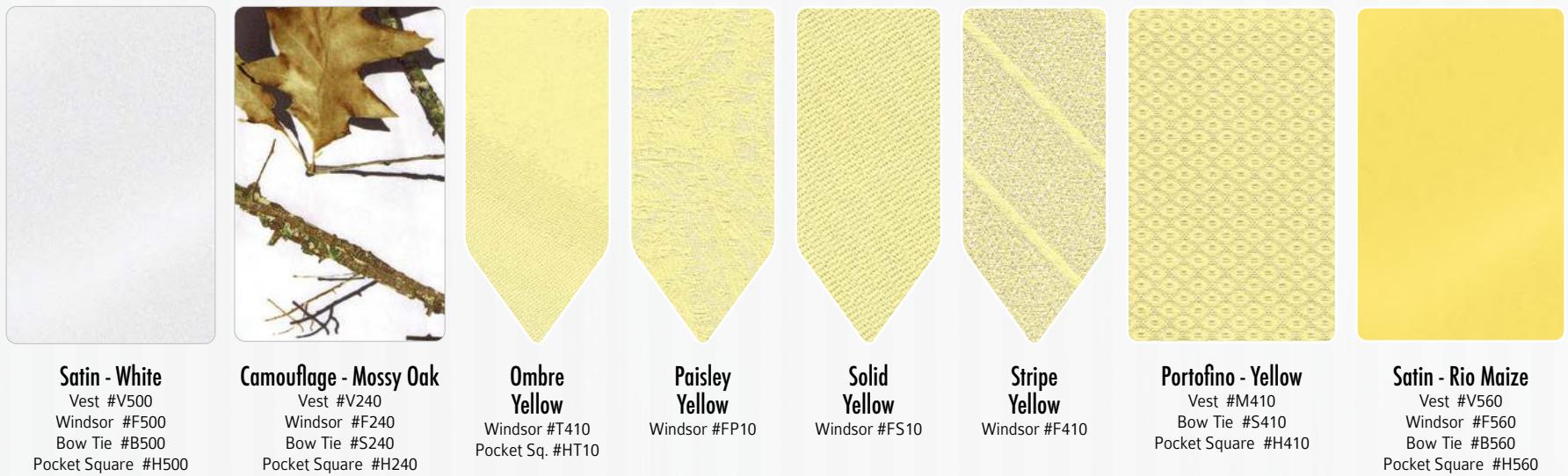
Stripe White
Windsor #F400

Portofino - White
Vest #M400
Bow Tie #S400
Pocket Square #H400

Simply Solid - White
Windsor #F300
Pocket Square #H300

Blossom Floral - White
Windsor #F860
Bow Tie #B860
Pocket Sq. #H860

Allure Dot - White
Windsor #F840
Bow Tie #B840
Pocket Square #H840



Satin - White
Vest #V500
Windsor #F500
Bow Tie #B500
Pocket Square #H500

Camouflage - Mossy Oak
Vest #V240
Windsor #F240
Bow Tie #S240
Pocket Square #H240

Ombre Yellow
Windsor #T410
Pocket Sq. #HT10

Paisley Yellow
Windsor #FP10

Solid Yellow
Windsor #FS10

Stripe Yellow
Windsor #F410

Portofino - Yellow
Vest #M410
Bow Tie #S410
Pocket Square #H410

Satin - Rio Maize
Vest #V560
Windsor #F560
Bow Tie #B560
Pocket Square #H560



Ombre Saffron
Windsor #T474
Pocket Sq. #HT74

Paisley Saffron
Windsor #FP74

Solid Saffron
Windsor #FS74

Stripe Saffron
Windsor #F474

Portofino - Saffron
Vest #M474
Bow Tie #S474
Pocket Square #H474

Yellow is associated with intellect, freshness, joy, optimism and youth

Gold represents power, good health, success and strength



Vertical - Metallic Gold
Vest #V819
Bow Tie #B819



Ombre Golden
Windsor #T442
Pocket Sq. #HT42



Solid Golden
Windsor #FS42



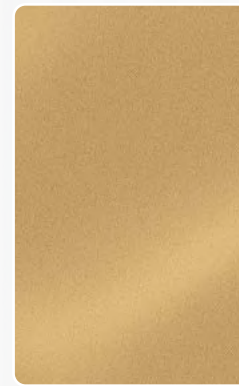
Stripe Golden
Windsor #F442



Portofino - Golden
Vest #M442
Bow Tie #S442
Pocket Square #H442



Simply Solid - Golden
Windsor #F389
Pocket Sq. #H389



Satin - Victorian Gold
Vest #V530
Windsor #F530
Bow Tie #B530
Pocket Square #H530



Blossom Floral - Golden/Champagne
Windsor #F885
Bow Tie #B885
Pocket Sq. #H885

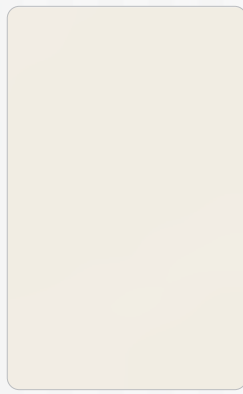


PHOTOS BY:
KLEM STUDIO PHOTOGRAPHY
@klemstudiosphotography

Ivory represents calm, quiet, pleasantness with a touch of luster



Allure Dot - Ivory
Windsor #F849
Bow Tie #B849
Pocket Square #H849



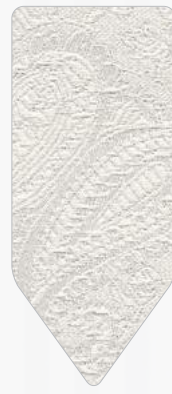
Satin - Ivory
Vest #V509
Windsor #F509
Bow Tie #B509
Pocket Square #H509



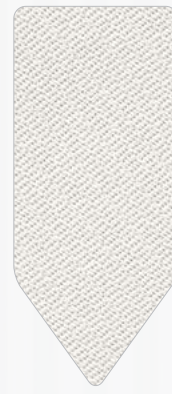
Simply Solid - Diamond White
Windsor #F309
Pocket Square #H309



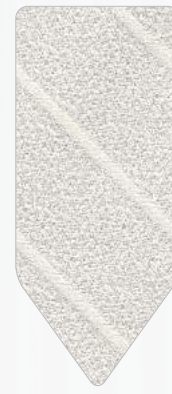
Ombre Diamond White
Windsor #T409
Pocket Sq. #HT09



Paisley Diamond White
Windsor #FP09



Solid Diamond White
Windsor #FS09



Stripe Diamond White
Windsor #F409



Portofino - Diamond White
Vest #M409
Bow Tie #S409
Pocket Square #H409



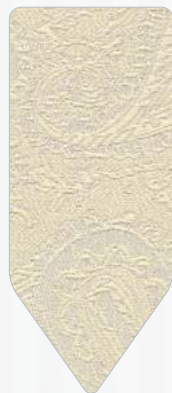
Blossom Floral - Diamond White
Windsor #F869
Bow Tie #S869
Pocket Square #H869



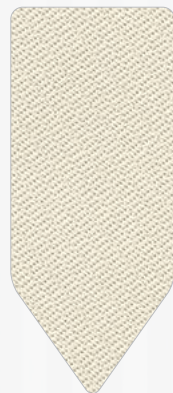
Colby - Ivory
Windsor #F709
Bow Tie #B709
Pocket Square #H709



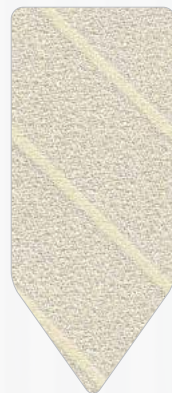
Ombre Antique
Windsor #T419
Pocket Sq. #HT19



Paisley Antique
Windsor #FP19



Solid Antique
Windsor #FS19



Stripe Antique
Windsor #F419



Portofino - Antique
Vest #M419
Bow Tie #S419
Pocket Square #H419



David Major - Tan
Vest #V355
Windsor #F355
Bow Tie #B355
Pocket Square #H355



Satin - Fino Cream
Vest #V505
Windsor #F505
Bow Tie #B505
Pocket Square #H505



Tweed - Beige
Vest #V109
Windsor #F109
Bow Tie #B109
Pocket Square #H109



Satin - Beige
Vest #V522
Windsor #F522
Bow Tie #B522
Pocket Sq. #H522



Colby - Portobello
Windsor #F722
Bow Tie #B722
Pocket Square #H722



Blossom Floral - Sandstone
Windsor #F865
Bow Tie #B865
Pocket Sq. #H865



Satin - Cappuccino
Vest #V525
Windsor #F525
Bow Tie #B525
Pocket Square #H525

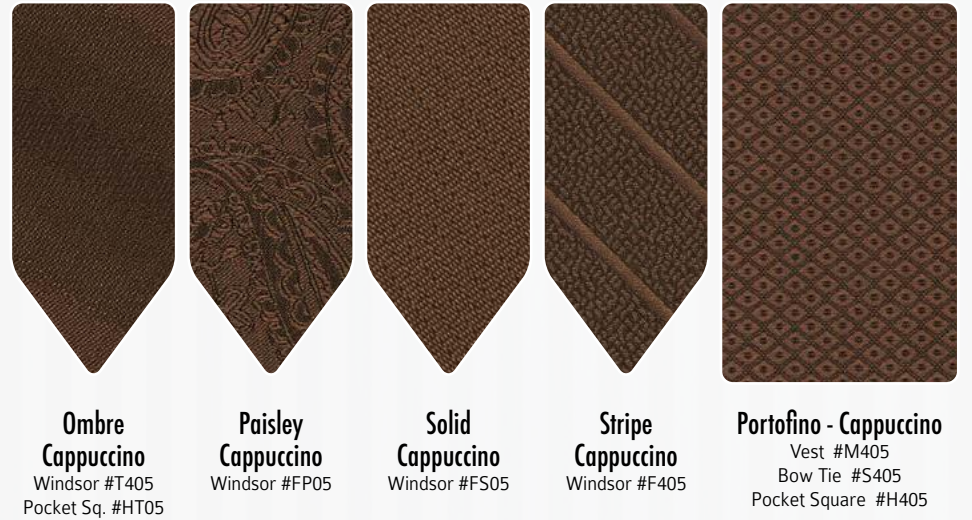


Tweed - Tan
Vest #V105
Windsor #F105
Bow Tie #B105
Pocket Square #H105



Blossom Floral - Dark Sandstone
Windsor #F875
Bow Tie #B875
Pocket Sq. #H875

Brown suggests stability, simplicity, endurance, reliability and friendship



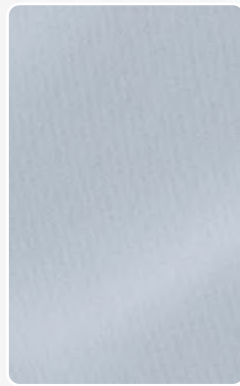
Silver represents glamour, sleekness, timeless, classic and elegance



Colby - Platinum
Windsor #F701
Bow Tie #B701
Pocket Square #H701



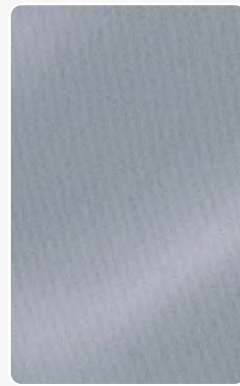
Vertical - Metallic Silver
Vest #V811
Bow Tie #B811



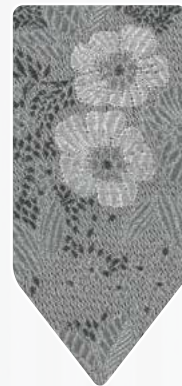
Satin - VI Silver
Vest #V511
Windsor #F511
Bow Tie #B511
Pocket Square #H511



Simply Solid - Mercury
Windsor #F301
Pocket Square #H301



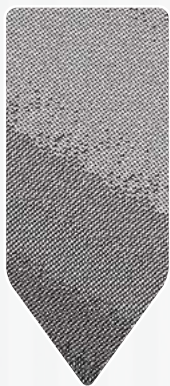
Satin - PV Platinum
Vest #V521
Windsor #F521
Bow Tie #B521
Pocket Square #H521



Blossom Floral - Heather
Windsor #F867
Bow Tie #B867
Pocket Sq. #H867



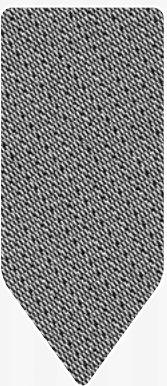
Satin - Victorian Pewter
Vest #V531
Windsor #F531
Bow Tie #B531
Pocket Square #H531



Ombre Platinum
Windsor #T401
Pocket Sq. #HT01



Paisley Platinum
Windsor #FP01



Solid Platinum
Windsor #FS01



Stripe Platinum
Windsor #F401



Portofino - Platinum
Vest #M401
Bow Tie #S401
Pocket Square #H401



Ombre Pewter
Windsor #T431
Pocket Sq. #HT31



Paisley Pewter
Windsor #FP31



Solid Pewter
Windsor #FS31



Stripe Pewter
Windsor #F431



Portofino - Pewter
Vest #M431
Bow Tie #S431
Pocket Square #H431



Colby - Graphite
Windsor #F731
Bow Tie #B731
Pocket Square #H731



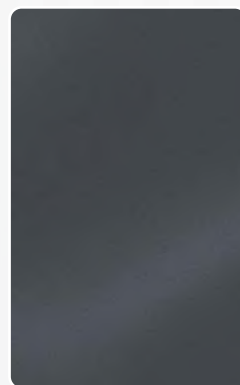
Tweed - Gray
Vest #V101
Windsor #F101
Bow Tie #B101
Pocket Square #H101



Simply Solid - Charcoal
Windsor #F311
Pocket Square #H311



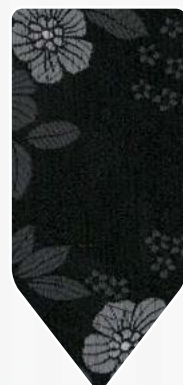
Allure Dot - Charcoal
Windsor #F841
Bow Tie #B841
Pocket Square #H841



Satin - Bali Gray
Vest #V541
Windsor #F541
Bow Tie #B541
Pocket Square #H541



Blossom Floral - Steel
Windsor #F861
Bow Tie #B861
Pocket Sq. #H861



Blossom Floral - Black
Windsor #F862
Bow Tie #B862
Pocket Sq. #H862

Black is associated with power, elegance, formality and mystery



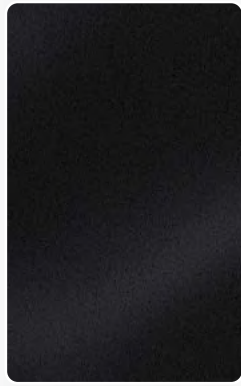
Colby - Black
Windsor #F702
Bow Tie #B702
Pocket Square #H702



Allure Dot - Black
Windsor #F842
Bow Tie #B842
Pocket Square #H842



Simply Solid - Black
Windsor #F302
Pocket Square #H302



Satin - Black
Vest #V502
Windsor #F502
Bow Tie #B502
Pocket Square #H502



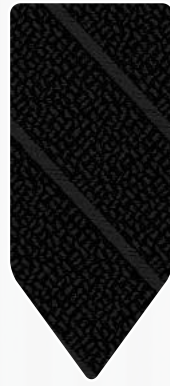
Ombre Black
Windsor #T402
Pocket Sq. #HT02



Paisley Black
Windsor #FP02



Solid Black
Windsor #FS02



Stripe Black
Windsor #F402



Portofino - Black
Vest #M402
Bow Tie #S402
Pocket Square #H402



PHOTOS BY:
ALLYSHA NOELLE PHOTOGRAPHY



Size Charts

Short (Height under 5'8")

COAT SIZE	WEIGHT	CHEST	OVERARM	WAIST	HIP	OUTSEAM	NECK	SLEEVE	VEST
34S	100-115	32-34	41-43	26-28	32-34	< 40	13-14.5	31-34	S
35S	105-125	33-35	42-44	27-29	33-35	< 40	14-14.5	31-34	S
36S	115-135	34-36	43-45	27-30	33-36	< 40	14-14.5	31-34	S
37S	125-145	35-37	44-46	28-31	34-37	< 40	14-15.5	31-34	S
38S	135-155	36-38	45-47	29-32	35-38	< 40	14-15.5	31-34	S
39S	145-160	37-39	46-48	30-33	36-39	< 40	15-16.5	31-34	M
40S	150-165	38-40	47-49	30-34	36-40	< 40	15-16.5	31-34	M
41S	155-170	39-41	48-50	31-35	37-41	< 40	15.5-16.5	31-34	M
42S	160-180	40-42	49-51	32-36	38-42	< 40	15.5-16.5	31-34	M
43S	170-190	41-43	50-52	33-37	39-43	< 40	16-17.5	31-34	L
44S	180-200	42-44	51-53	34-39	40-45	< 40	16-17.5	31-34	L
46S	190-210	44-46	53-55	36-41	42-47	< 40	16-17.5	31-34	XL
48S	210-230	46-48	55-57	38-44	44-50	< 40	17-18.5	31-34	XL
50S	220-250	48-50	57-59	40-46	46-52	< 40	17-18.5	31-34	2XL
52S	240-270	50-52	58-60	42-48	48-54	< 40	18-19.5	31-34	2XL
54S	250-280	52-54	60-62	44-50	50-56	< 40	19 - 20	31-34	2XL

Regular (Height 5'8" - 6')

COAT SIZE	WEIGHT	CHEST	OVERARM	WAIST	HIP	OUTSEAM	NECK	SLEEVE	VEST
34R	105-125	32-34	41-43	26-28	32-34	39-43	14-14.5	34-35	S
35R	115-135	33-35	42-44	27-29	33-35	39-43	14-14.5	34-35	S
36R	125-145	34-36	43-45	27-30	33-36	39-43	14-14.5	34-35	S
37R	130-150	35-37	44-46	28-31	34-37	39-43	14.5-15.5	34-35	S
38R	140-160	36-38	45-47	29-32	35-38	39-43	14.5-15.5	34-35	S
39R	150-165	37-39	46-48	30-33	36-39	39-43	15-16.5	34-35	M
40R	160-175	38-40	47-49	30-34	36-40	39-43	15-16.5	34-35	M
41R	170-185	39-41	48-50	31-35	37-41	39-43	15.5-16.5	34-35	M
42R	175-190	40-42	49-51	32-36	38-42	39-43	15.5-16.5	34-35	M
43R	185-200	41-43	50-52	33-37	39-43	39-43	16-17.5	34-35	L
44R	190-215	42-44	51-53	34-40	40-45	39-43	16-17.5	34-35	L
46R	205-225	44-46	53-55	36-42	42-47	39-43	16.5-17.5	34-35	XL
48R	220-240	46-48	55-57	38-43	44-50	39-43	17-18.5	34-35	XL
50R	240-260	48-50	57-59	40-46	46-52	39-43	17-18.5	34-35	2XL
52R	260-275	50-52	58-60	42-48	48-54	39-43	17.5-18.5	34-35	2XL
54R	275-290	52-54	60-62	44-51	50-56	39-43	18-19.5	34-35	2XL
56R	290-300	54-56	63-65	46-53	52-58	39-43	18.5-20	34-35	3XL
58R	300-310	56-58	65-67	48-55	54-60	39-43	19-20.5	34-35	4XL
60R	310-330	58-60	67-69	50-57	56-62	39-43	19.5-22.5	34-35	4XL
62R	320-340	60-62	69-71	52-59	58-64	39-43	20-22.5	34-35	4XL
64R	340-350	62-64	71-73	54-61	60-66	39-43	21-24	34-35	4XL
66R	350-370	64-66	73-75	56-63	62-68	39-43	23-25	34-35	4XL

Long (Height 6' - 6'3")

COAT SIZE	WEIGHT	CHEST	OVERARM	WAIST	HIP	OUTSEAM	NECK	SLEEVE	VEST
36L	135-155	34-36	43-45	27-30	33-36	43-45	14-15.5	36-37	S
37L	140-160	35-37	44-46	28-31	34-37	43-45	14.5-15.5	36-37	S
38L	150-175	36-38	45-47	29-32	35-38	43-45	14.5-15.5	36-37	S
39L	155-185	37-39	46-48	30-33	36-39	43-45	15-16.5	36-37	M
40L	160-185	38-40	47-49	30-34	36-40	43-45	15-16.5	36-37	M
41L	170-190	39-41	48-50	31-35	37-41	43-45	15.5-16.5	36-37	M
42L	175-200	40-42	49-51	32-36	38-42	43-45	15.5-16.5	36-37	M
43L	185-210	41-43	50-52	33-37	39-43	43-45	16-17.5	36-37	L
44L	200-225	42-44	51-53	34-40	40-45	43-45	16-17.5	36-37	L
46L	210-235	44-46	53-55	36-42	42-47	43-45	16.5-17.5	36-37	XL
48L	220-245	46-48	55-57	38-43	44-50	43-45	17-18.5	36-37	XL
50L	240-265	48-50	57-59	40-46	46-52	43-45	17-18.5	36-37	2XL
52L	250-275	50-52	58-60	42-48	48-54	43-45	17.5-18.5	36-37	2XL
54L	265-290	52-54	60-62	44-51	50-56	43-45	18-19.5	36-37	2XL
56L	280-305	54-56	63-65	46-53	52-58	43-45	18.5-20	36-37	3XL
58L	295-315	56-58	65-67	48-55	54-60	43-45	19-20.5	36-37	4XL
60L	305-330	58-60	67-69	50-57	56-62	43-45	19.5-22.5	36-37	4XL
62L	315-340	60-62	69-71	52-59	58-64	43-45	20-22.5	36-37	4XL
64L	325-350	62-64	71-73	54-61	60-66	43-45	21-24	36-37	4XL
66L	350-375	64-66	73-75	56-63	62-68	43-45	23-26	36-37	4XL

X-Long (Height over 6'3")

COAT SIZE	WEIGHT	CHEST	OVERARM	WAIST	HIP	OUTSEAM	NECK	SLEEVE	VEST
38X	150-180	36-38	45-47	28-32	35-38	> 43	14-15.5	> 36	M-Long
40X	165-190	38-40	47-49	31-34	36-40	> 43	15-16.5	> 36	M-Long
42X	180-205	40-42	49-51	32-36	38-42	> 43	15.5-16.5	> 36	M-Long
44X	200-230	42-44	51-53	34-40	40-46	> 43	16-17.5	> 36	L-Long
46X	215-240	44-46	53-55	36-42	42-48	> 43	16-17.5	> 36	XL-Long
48X	230-270	46-48	55-57	38-44	44-50	> 43	17-18.5	> 36	XL-Long

Men's Traditional Pant Sizes

SIZE	3 WAIST SIZE - ADJUSTABLE
1	27 - 28 - 29
2	30 - 31 - 32
3	33 - 34 - 35
4	36 - 37 - 38
5	39 - 40 - 41
6	42 - 43 - 44
7	45 - 46 - 47
8	48 - 49 - 50
9	51 - 52 - 53
10	54 - 55 - 56
11	57 - 58 - 59
12	60 - 61 - 62
13	63 - 64 - 65
14	66 - 67 - 68
15	69 - 70 - 71

Belt Sizes

SIZE	FITS WAIST SIZES
(Boys) 20"	18 - 20
(Boys) 25"	22 - 24
30"	26 - 28
32"	29 - 30
34"	31 - 32
36"	33 - 34
38"	35 - 36
40"	37 - 38
42"	39 - 40
44"	41 - 42
46"	43 - 44
48"	45 - 46
50"	47 - 50
54"	51 - 54
58"	55 - 58
62"	59 - 62
66"	63 - 66
70"	67 - 70

Elastic Waist Pant Sizes

SIZE	2 WAIST SIZE - ELASTIC
18B	17 - 18
20B	19 - 20
22B	21 - 22
24B	23 - 24
26B	25 - 26
1	28 - 29
2	30 - 31
3	32 - 33
4	34 - 35
5	36 - 37
6	38 - 39
7	40 - 41

SIZE	WAIST SIZE - ELASTIC
8	42 - 43
9	44 - 45
10	46 - 47
11	48 - 49
12	50 - 51
13	52 - 53
14	54 - 55
15	56 - 57
16	58 - 59
17	60 - 61
18	62 - 63
19	64 - 65

Vest Sizes

SIZE	SIZE CODE	FITS COAT SIZES	FULL BACK	OPEN BACK
BOY'S SMALL	BS	3 - 6		X
BOY'S MEDIUM	BM	7 - 12		X
BOY'S LARGE	BL	14 - 16		X
SMALL	S	34 - 38	X	
MEDIUM	M	39 - 42	X	
LARGE	L	43 - 44	X	
X-LARGE	XL	46 - 48	X	
2X-LARGE	2XL	50 - 52	X	
3X-LARGE	3XL	54 - 56	X	
4X-LARGE	4XL	58 +	*	X
5X-LARGE	5XL	60 +	*	X

* Some styles

Fitted Shirt Sizes

NECK / SLEEVE	XS (13-13.5)	S (14-14.5)	M (15-15.5)	L (16-16.5)	XL (17-17.5)	2XL (18-18.5)	3XL (19-19.5)
30-31	x	x	x	x			
32-33	x	x	x	x	x	x	x
34-35		x	x	x	x	x	x
36-37		x	x	x	x	x	x
38-39			x	x	x	x	x
40-41				x	x	x	
Max. Chest		32-37	37-41	41-44	44-47	46-50	56-58
Max. Waist		27-31	30-34	33-37	36-41	39-44	58-60

Boy's Size Chart

COAT SIZE	HEIGHT	WEIGHT	CHEST	WAIST	OUTSEAM	SHIRT
3	35 - 38"	30 - 35	23	18 - 20	19 - 22	BXS
4	38 - 42"	35 - 40	24	20 - 21	22 - 23	BXS
6	44 - 46"	45 - 50	25	21 - 23	23 - 27	BS
8	47 - 50"	50 - 60	26 - 27	22 - 24	25 - 30	BS-BM
10	51 - 54"	60 - 75	27 - 28	22 - 25	29 - 32	BS-BM
12	55 - 58"	75 - 90	29 - 30	24 - 26	33 - 37	BM
14	59 - 62"	90 - 105	31.5	25 - 27	34 - 38	BM-BL
16	63 - 65"	105 - 115	33	26 - 28	36 - 50	BL
18	66 - 67"	115 - 130	35	27 - 30	37 - 41	BL

Boy's Shirt Sizes

SHIRT SIZE	NECK	MAX. SLEEVE
BXS	10 - 10.5	19
BS	11 - 11.5	22
BM	12 - 12.5	25
BL	13 - 13.5	29
XS MENS	14 - 14.5	31 or 33

Boy's Pant Sizes

SIZE	WAIST	MAX. OUTSEAM*
18B	18 - 19	25.5
20B	20 - 21	29.5
22B	22 - 23	33.5
24B	24 - 25	37.5
26B	26 - 27	41.5

Notice: Boy's shirt sizes have specified sleeve lengths, as shown. Armbands are available for boys that require a large shirt but have a shorter sleeve measurement. Boy's with coat sizes 14 - 18 will receive a men's tie. Boys in a size 18 coat will receive a men's small vest.

For more measuring tips, refer to your 'Formalwear Assistant'

Notice:

The size charts listed here are to serve as a general guideline of men's formalwear sizes. Fit will vary according to height, weight, body shape and tuxedo/suit style. Remember to fit the largest part of the body for comfort. Please use these charts as a reference when checking out of town measurements and confirmation reports. If you need help with sizing, call our customer service department at (800) 236-7303.

Coordinating Coat, Pant, and Vest Chart

#	Description	Fit	Color	Pants	Vest	Buttons	Bow Tie	Windsor Tie	Pocket Square
BLACK									
144	MOD Metro	Slim	Black	144	V144	4	-	-	-
262	Ike Behar Ashton	Slim	Black	144	V144	4	-	-	-
362	Allure Men	Slim	Black	362	V362	5	-	-	-
512	FCG Cutaway	Contemporary	Black	121	n/a	-	-	-	-
BROWN / TAN									
125	Ike Behar Archer	Slim	Brown	125	V125	4	B125	F125	H125
126	MOD Lorenzo	Slim	Cinnamon	126	V126	4	B126	F126	H126
355	David Major Stretch	Slim	Tan	355	V355	5	B355	F355	H355
BURGUNDY									
186	Ike Behar Marbella	Slim	Burgundy	186	V186	4	-	-	-
GREEN									
128	Ike Behar Luka	Slim	Hunter Green	128	V128	4	B128	F128	H128
GRAY									
111	Couture 1910 Houston	Slim	Steel Gray	111	V111	4	B111	F111	H111
151	Kenneth Cole Lennox	Slim	Heather Gray	151	V151	4	B151	F151	H151
211	Couture 1910 Barrow	Slim	Steel Gray	111	V111	4	B111	F111	H111
351	David Major Stretch	Slim	Light Gray	351	V351	4	B351	F351	H351
391	Jean Yves Ceremonia	Modern	Steel Gray	191	V391	3	-	F191	H191
521	Lord West Cutaway	Contemporary	Charcoal Gray	121	n/a	-	-	-	-
BLUE / NAVY									
123	Allure Men Ridge	Slim	Denim Blue	123	V123	5	B123	F123	H123
133	Ike Behar Lane	Slim	Dusk Blue	133	V133	4	B133	F133	H133
143	Ike Behar Blake	Slim	Navy	243	V243	4	-	-	-
153	Ike Behar Sebastian	Slim	Navy	243	V243	4	-	-	-
243	Ike Behar Collin	Slim	Navy	243	V243	4	B243	F243	H243
333	David Major Stretch	Slim	French Blue	333	V333	4	B333	F333	H333
WHITE									
280	Ike Behar Aragon	Slim	White	280	V280	4	B280	F280	H280
380	Ike Behar Jason	Slim	White/Black	280	V280	4	B280	F280	H280
SPECIALTY									
951	MOD Starlight Lame'	Slim	Silver	362	-	-	B951	-	-
952	MOD Equinox	Slim	Black Velvet	362	V952	4	B952	Vest/Tie = Solid Black	
953	MOD Starlight Lame'	Slim	Blue	362	-	-	B953	-	-
954	Allure Men Venice	Slim	Dusty Rose Velvet	362	-	-	-	-	-
956	Ike Behar Carter	Slim	Red	362	V956	4	-	-	-
957	Allure Men Venice	Slim	Aubergine Velvet	362	-	-	-	-	-
959	MOD Camo Lame'	Slim	Black & Gold	362	-	-	B959	-	-
961	MOD Starlight Lame'	Slim	Stone	362	-	-	B951	-	-
963	MOD Hendrix	Slim	Multi-Color	362	-	-	B963	-	-
969	MOD Ryan	Slim	Floral	362	-	-	B969	-	-

NIK

DB • FW



Scan this code to view the
DB Formalwear Website!