



OMEXCO
Fine Belgian Wallcoverings



OASE
A RADIANT OASIS OF
AUTHENTIC ARTISTRY



HIERBAS, OAS202

OMEXCO
Fine Belgian Wallcoverings



OASE

Our new collection OASE evokes the notion of a serene and homely retreat, infused with the rustic flair of rich natural textures in earthy tones blending seamlessly with iconic design elements.

At the heart of this collection lie elaborate paperweaves in terracotta shades and contrasting vivid greens, crafted into exquisite compositions that highlight our passion for craftsmanship and tactile poetry.

Organic embroideries, delicate marquetry and stunning panoramic designs further accentuate the versatility of paperweaves, elevating the inherent beauty of the natural raw materials.

OASE is an invitation to immerse yourself in a radiant oasis of authentic artistry, where contemporary design meets traditional crafts and folklore.

*« The richness of paperweaves
elevates contemporary interiors,
emphasizing the intrinsic appeal
of natural materials. »*



XICO, OAS272

« Organic beauty captured in print. »

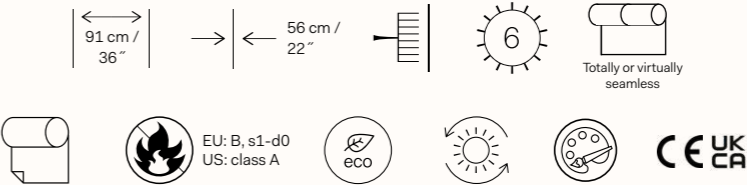


HIERBAS, OAS203

OMEXCO
Fine Belgian Wallcoverings



HIERBAS
Printed paperweave



OAS201



OAS202



OAS203

« A timeless expression of paperweave craftsmanship,
Alma unveils a palette of three neutral tones, each inspired
by the earth's natural beauty and simplicity. »

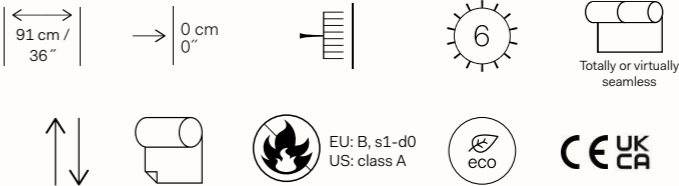


ALMA, OAS283

OMEXCO
Fine Belgian Wallcoverings



ALMA
Paperweave



OAS281



OAS282



OAS283

« Exquisite paperweave, embroidered
with a subtle organic pattern. »



VERANO, OAS222

OMEXCO
Fine Belgian Wallcoverings



VERANO
Embroidered paperweave

←→

91 cm /
36"

→

0 cm
0"

5-6

Totally or virtually
seamless

↑

↓

Sold by
9 m / 9.84 yd
rolls.

EU: B, s1-d0
US: class A

eco

CE

UK
CA



OAS221



OAS222



OAS223

« Paper fibres are dyed with gentle irregularity, evoking the essence of nature’s touch. The palette unfolds in warm, earthy hues, a tribute to the beauty of organic simplicity. »

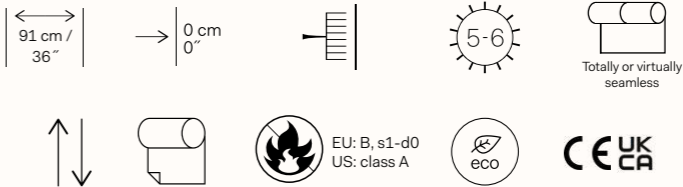


CESTA, OAS294

OMEXCO
Fine Belgian Wallcoverings



CESTA
Paperweave



OAS293



OAS292



OAS294



OAS291

« A delicate paperweave revealing
the natural allure of the material. »

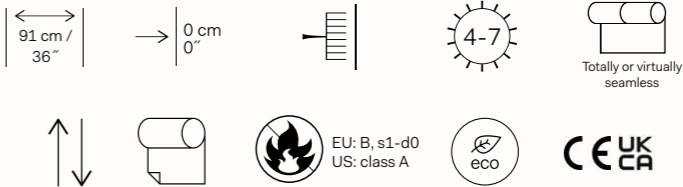


SELVA, OAS264

OMEXCO
Fine Belgian Wallcoverings



SELVA
Paperweave



OAS265



OAS263



OAS264

« A sweeping panoramic design, inspired by naïve art, whispers of the vibrant landscapes of South America. »



ALEGRE, OAS2 I I

OMEXCO
Fine Belgian Wallcoverings



ALEGRE
Panoramic design - Printed paperweave

↔

4,55 m /
179" 1/8

→ ←

┌ ┐

└ ┘

7

7

Subtle seaming

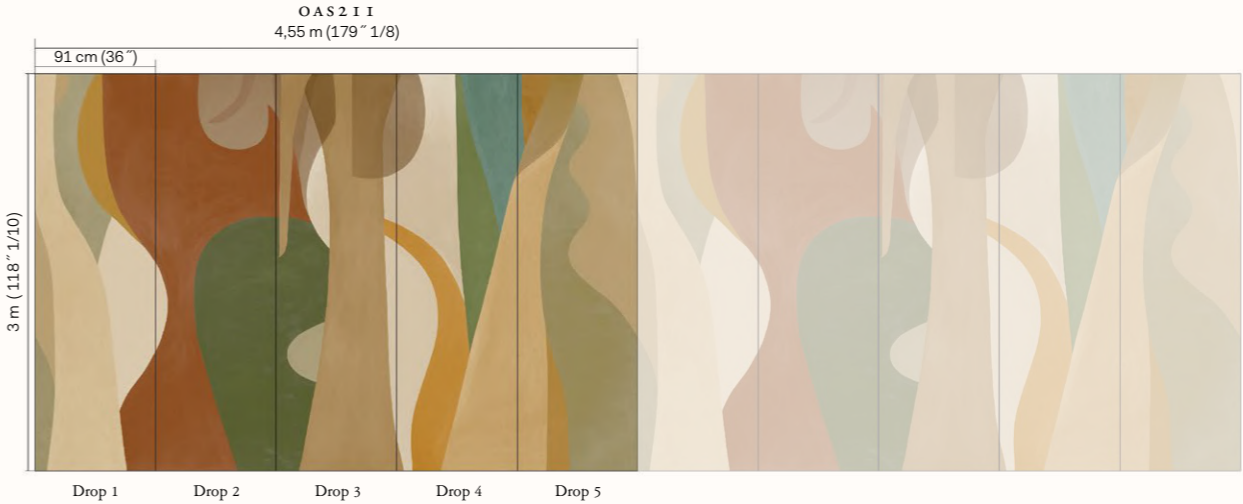
↻

1 2 3 4 5

EU: B, s1-d0
US: class A

eco

CE UK
CA



OAS2 I I: Panoramic design of 5 drops. Total dimension 4,55 x 3 m (179" 1/8 x 118" 1/10).
This panoramic has been created as a continuous design and can therefore be repeated endlessly.
Custom height/width as of 6 drops.



OAS2 I I

« Alain paperweave design in
tone-on-tone, earthy hues. »

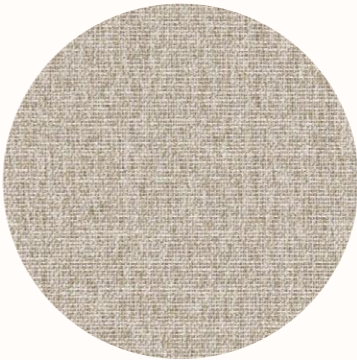
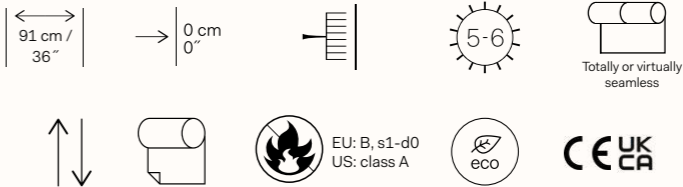


XICO, OAS272

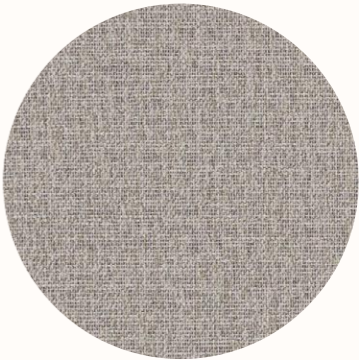
OMEXCO
Fine Belgian Wallcoverings



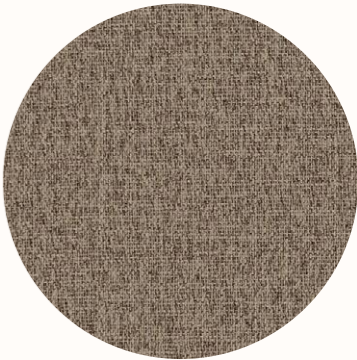
XICO
Paperweave



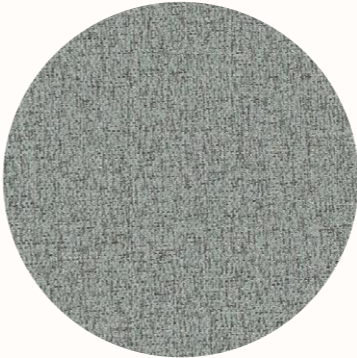
OAS274



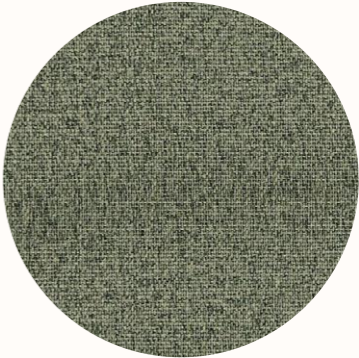
OAS273



OAS271



OAS275



OAS272

« Bicoloured paper threads
create an authentic charm. »



CALZADA, OAS242

OMEXCO
Fine Belgian Wallcoverings



CALZADA
Paperweave

91 cm / 36"

0 cm 0"

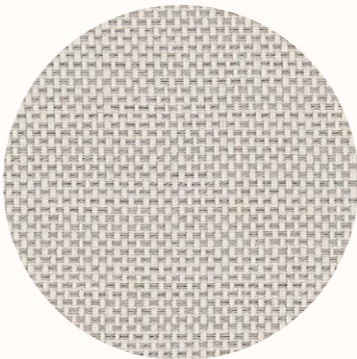
4-5

Subtle seaming

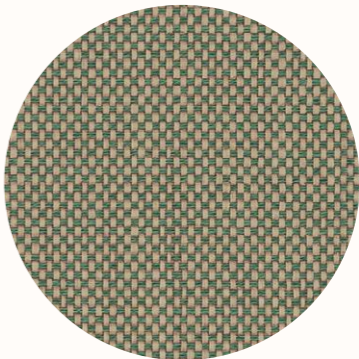
EU: B, s1-d0
US: class A

eco

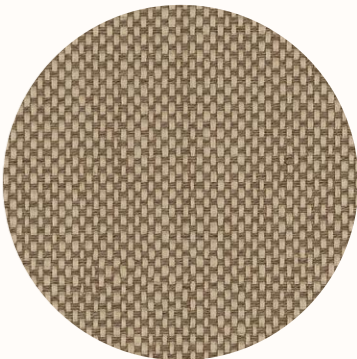
CE UK CA



OAS241



OAS243



OAS242

« A patchwork of paperwave, crafted from geometric shapes,
rests upon a metallic backing, either gold or silver. »

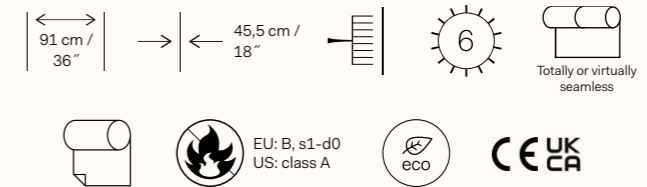


DOMINO, OAS231

OMEXCO
Fine Belgian Wallcoverings



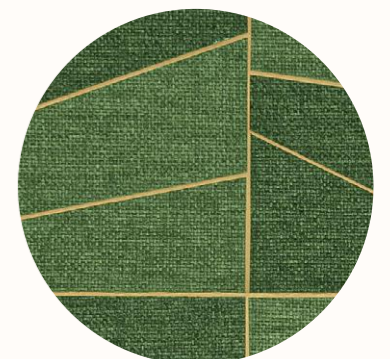
DOMINO
Paperweave patchwork



OAS232



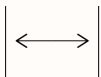
OAS231



OAS233



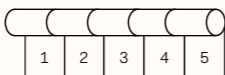
TECHNICAL GUIDE



Indicates that the wallcovering is shown vertically (as it comes off the roll).



Sold by the metre/yard.
No minimum.



Panoramic design
of 5 drops.



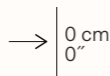
Light resistance.



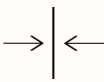
Fire resistant.



Easy installation.



Pattern repeat
is 0 cm (0") and
the design does
not need to be
matched.



Straight match.



Totally or virtually
seamless.



Subtle seaming.



This design
requires reverse
hanging.



Custom colouring:
300 m / 330 yds
min.



Printed with
solar energy.



Ecological.