

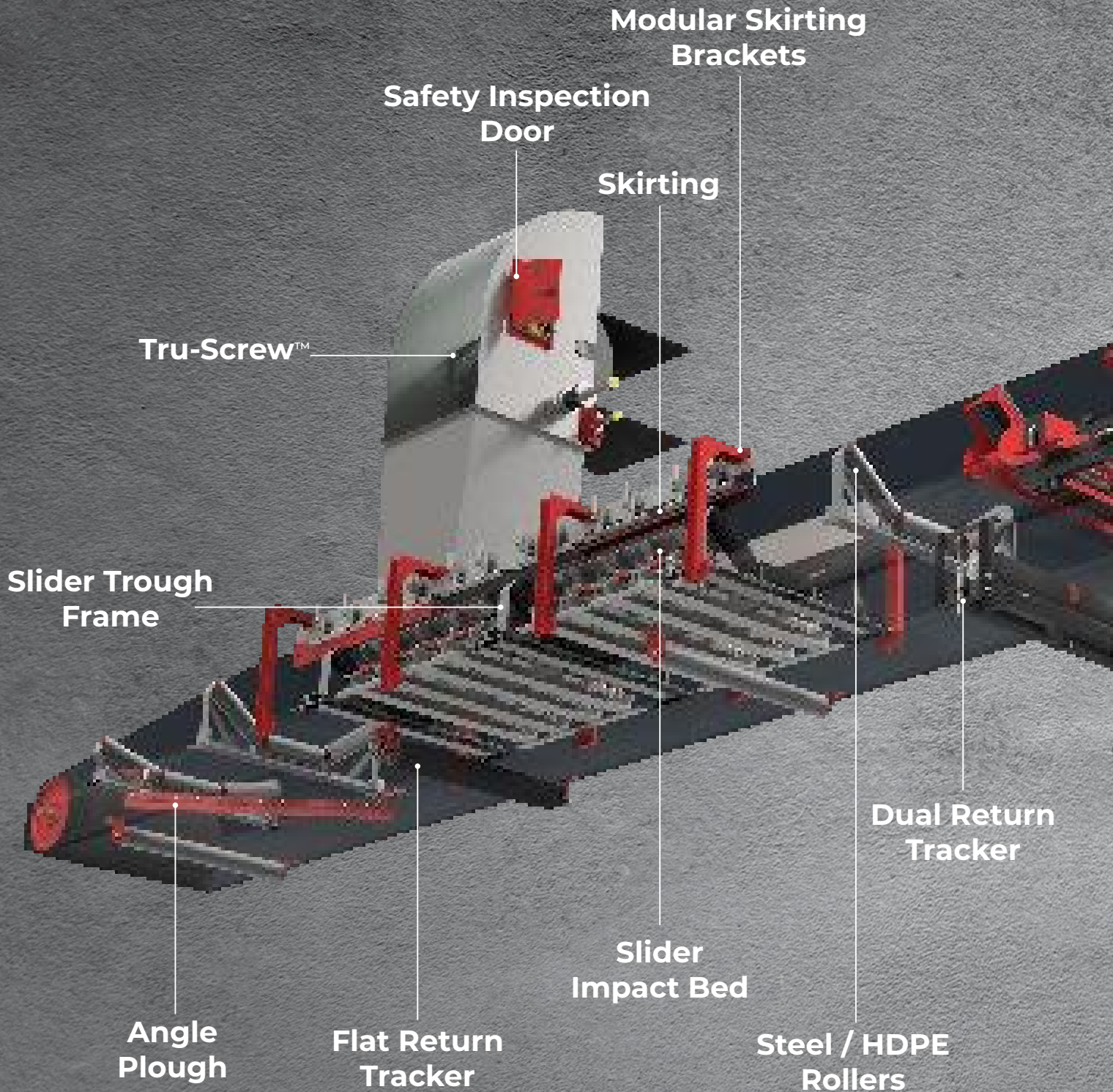


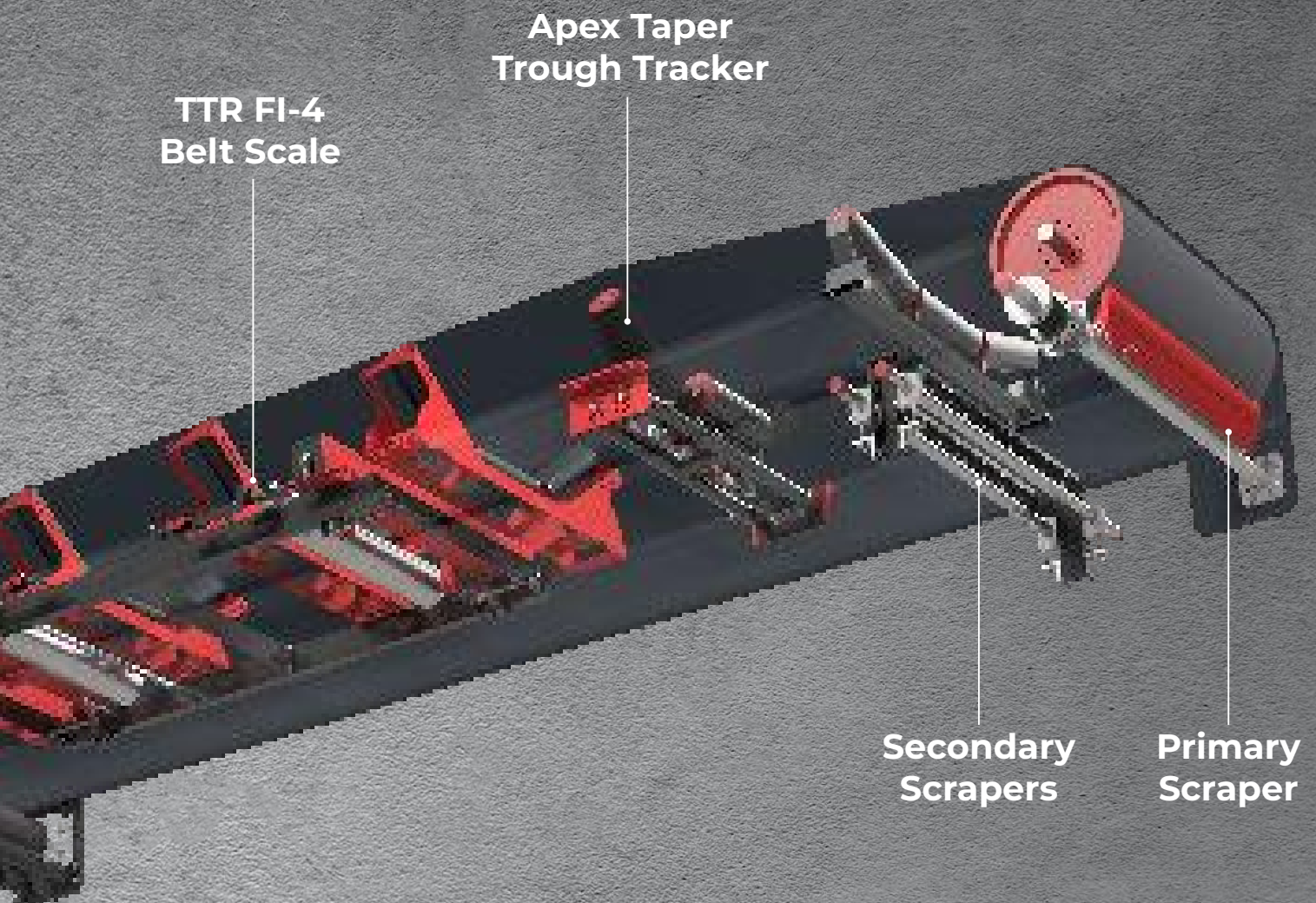
TRU-TRAC®



TRU-SCREW™
MECHANICAL BELT FASTENING SYSTEMS

MAXIMISE CONVEYOR SYSTEM PERFORMANCE, EFFICIENCY AND SAFETY.





The role of a conveyor system in a mining operation can be likened to an artery in the human body; both are essential for the efficient transportation of materials critical to the overall health and productivity of their respective systems. Similar to how the main artery carries oxygenated blood to different parts of the body, a conveyor system in a mine facilitates the transport of bulk material from one location to another, thereby supporting the seamless operation of the mining process. The effectiveness of a conveyor system is a pivotal factor in guaranteeing the efficiency and profitability of a mining operation.



FASTENERS

**POWERFUL
CONNECTIONS
FOR STRONGER
CONVEYOR SYSTEMS.**

A close-up, high-angle photograph of a conveyor belt system. The belt is dark and textured, with a series of circular fasteners (Tru-Trac) spaced along its length. The fasteners are arranged in a grid pattern, and some are highlighted with a red glow. The background is dark and slightly out of focus, showing the structure of the conveyor system. The overall tone is industrial and technical.

Tru-Trac® **FASTENERS**

Designed to provide secure and reliable fastening, these innovative solutions revolutionize the way conveyor belts are joined. Our fasteners ensure optimal performance, durability, and efficiency. Experience the future of belt fastening and take your operations to new heights.



TRU-SCREW™

FLEXIBLE SCREW SPLICE

Introducing the **Flexible Screw Splice**: a revolutionary conveyor belt splicing and fastening system that stands as the epitome of **power, strength, and flexibility**. Tailored to deliver precision and speed, it's an investment that pays for itself in **time and cost savings**. Tru-Trac®'s TRU-SCREW™ isn't just another splice; it's a game-changer that **outclasses competitors** in tensile strength and durability.

MAIN FEATURES:

- **Efficient:** Quick & Easy installation, does not require specialised equipment or skills.
- **Durable:** Wear, cut, and leak-resistant.
- **Strong:** High tensile strength and flexible.
- **Temperature Tolerant:** Withstands high heat up to 204°C and remains resilient even at -28°C.
- **Cost-Effective:** Tru-Screw is priced to provide an economical solution.
- **Convenient:** No need for pricey equipment. Compatible with belt scrapers.
- **Adaptable:** Available in kit form according to required belt width or in full length rolls.



Tru-Screw® incorporates specialized **self-tapping and self-drilling screws** that maintain the conveyor belt's integrity by threading through the belt carcass rather than producing holes, thereby preserving its strength significantly. Compared to conventional metal fasteners, this splice boasts **greater strength**, exhibits **less wear**, and features a streamlined silhouette that's gentler on the components of your conveyor systems.

Crafted from top-tier materials and proven successful in the most challenging applications, Tru-Screw surpasses competitors by delivering **superior tensile strength** and lasting durability at an **affordable price**.

Free installation and Training - T&C's apply

TRU-SCREW SUPPLIED IN TWO PACKAGING OPTIONS:

TRU-SCREW KITS

Ordered and supplied in pre-assembled and ready to install kits, **cut to length** for the specified belt width. The kit is supplied as **pre-assembled** top and bottom Tru-Screw lengths with **spacers**, for ease of installation. This Tru-Screw kit is supplied complete with the quantities of **Screws** and **PZ Bits**, corresponding to the belt width.



TRU-SCREW ROLLS

Supplied in **complete full length** Tru-Screw rolls.

The Tru-Screw rolls are supplied with a top and bottom roll, together with bulk boxes of spacers, screws and PZ Bits. The Rolls may then be cut to size, as and when required, readily available for installation on multiple belts and varying belt widths.



AVAILABLE RUBBER COMPOUND TYPES:

ABRASIONS RESISTANT (AR)	HEAT RESISTANT (HR)	FIRE RETARDANT (FR)	OIL RESISTANT (OR)	STAINLESS STEEL (SS)
--------------------------------	---------------------------	------------------------	-----------------------	-------------------------

Tru-Screw™

PRODUCT SELECTION GUIDE

TRU-SCREW™ SPECIFICATION

	SS35	SS63	SS80	SS100	SS125	SS180	SS200
Final belt thickness(before/after skiving) mm	4 - 11	4 - 13	4 - 15	6 - 15	7 - 20.5	7 - 20.5	7 - 19
Max. belt tention N/mm	31	63	80	100	125	180	200
Max. belt strength N/mm	315	630	800	1000	1250	1800	2000
Min. puley diameter mm	160 - 200	220 - 300	250 - 350	300 - 350	350 - 400	400 - 800	650 - 1000
Thickness upper part ± 1mm	4,5	5	6	7,5	6,5	6,5	10
Thickness bottom part ± 1mm	3,7	4	4,5	4,5	6	6	6
Conveyor belt type	EP44/EP315	EP500/EP630	EP800	EP1000	EP1250	EP1800	EP/2000

**EP800 = Belt class = Tru-Screw SS80

TRU-SCREW™ PRODUCT DESCRIPTION

Tru-Screw roll kit	TT SPLKIT35*25RL#	TT SPLKIT63*25RL#	TT SPLKIT80*25RL#	TT SPLKIT100*25RL#	TT SPLKIT125*15RL#	TT SPLKIT85*15RL#	TT SPLKIT200*15RL#
Full Length roll	25m	25m	25m	25m	15m	15m	15m
Per meter kit	TT SPLKIT35*#	TT SPLKIT63*#	TT SPLKIT80*#	TT SPLKIT100*#	TT SPLKIT125*#	TT SPLKIT180*#	TT SPLKIT200*#

AVAILABLE RUBBER COMPOUND TYPES:

ABRASIONS RESISTANT (AR)	HEAT RESISTANT (HR)	FIRE RETARDANT (FR)	OIL RESISTANT (OR)	STAINLESS STEEL (SS)
--------------------------------	---------------------------	------------------------	-----------------------	-------------------------

TRU-SCREW™ SPARES

	SS35	SS63	SS80	SS100	SS125	SS180	SS200
Screws(diameter x length mm)	5 x 12 / 5 x 14	5 x 14 / 5 x 16	5 x 18 / 5 x 20	5 x 20 / 5 x 22 / 5 x 24	6 x 21 / 6 x 22.5	6 x 24 / 6 x 25.5	6 x 25.5 / 6 x 28.5
Screws qty per meter/per roll	155/3870	243/6075	324/8100	324/8100	267/4000	267/4000	267/4000
Spacers (diameter x height mm)	5 x 5 / 5 x 7	5 x 7 / 5 x 9	5 x 9 / 5 x 11	5 x 9 / 5 x 11 / 5 x 13	6 x 9 / 6 x 11	6 x 11 / 6 x 15	6 x 15
Spacers per meter/per roll	10/250	10/250	10/250	10/250	10/150	10/150	10/150
PZ bit	PZ2				PZ3		
PZ bits per meter / per roll	1/25				1/15		
Tru-Screw SS35 - SS100	M5						
Tru-Screw SS125 - SS200	M6						



BELT SPLICING SOLUTION

TRU-SCREW INSTALLATIONS



SCAN THE QR CODE FOR:

- Application Videos
- Application Images
- Data Sheets



www.tru-trac.com

Tru-Screw™

INSTALLATION GUIDE

IMPORTANT INFORMATION

SKIVE ACCURATELY



Bad skiving



Good skiving

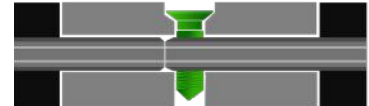
SCREW TENSION



Not enough tightening



Too much tightening



Good tightening

CHOOSING THE CORRECT SCREW



Screw is too long



Screw is too short



Screw is perfect

INSTALLATION PROCEDURE



1. Make sure belt leading and trailing edge has been cut square to belt manufacturers specifications.



2. Identify and clearly mark the following information on the belt
 - Centerline of the belt
 - Belt's direction of travel
 - Leading and trailing edge of the belt



3. Determine the Bias of the Tru-Screw and clearly mark the leading and trailing edge of the belt.
 - Bias can be determined by dividing belt width by 3 (belt width / 3 = length of the inclined edge)
 - Tru-Screw length is equal to belt width plus 10%

INSTALLATION PROCEDURE



- 4.** Transfer all measurements to the return side of the conveyor

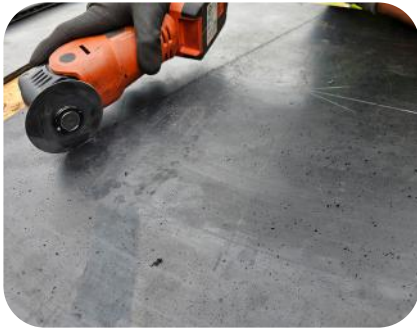


- 5.** Measure and confirm the screw lengths are sufficient for the joint



- 6.** Measure the Tru-Screw square from the edge to the inner spacer to determine skiving measurements.

Clearly mark the measurement parallel to the bias on the Trailing side of the belt first. Be sure to copy measurements to return side of the belt.



- 7.** Using the saw cutting blade on the multitool cut along the marked skiving line to create grooved guidelines for skiving. Be very careful not to cut into the belt's carcass/ply.

Repeat this process for top and bottom cover of trailing edge.



- 8.** Using the Multitool, carefully skive the top and bottom rubber cover.

Be sure to leave a thin layer of rubber on the carcass for protection.

Measure the top and bottom rubber cover and match to appropriate skiving blade. Do not rely on the manufacturer's watermark for reference.



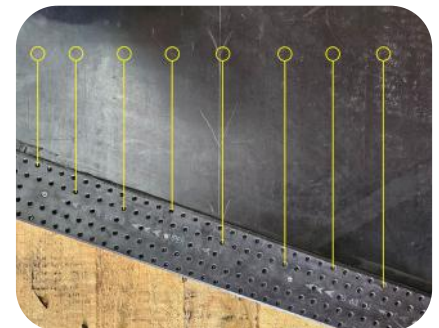
- 9.** Repeat steps 6 and 7 for bottom cover



- 10.** For ease of installation if a belt carcass is thicker than 6mm chamfer the edges Refer to the image below for direction



- 11.** Position the Tru-Screw on the trailing edge first. Ensure the belt is fully pushed up against the spacers.



- 12.** Place a thick wooden board underneath the Tru-Screw and tighten as per staggered sequence pictured.

- Confirm screw sizes
- Do not install on the pulleys

INSTALLATION PROCEDURE



13. Install the screws on your Tru-Screw



14. Remove all spacers from your Tru-screw



15. Measure the Tru-Screw square from the edge to the trailing edge of the belt to determine skiving measurements. Clearly mark the measurement parallel to the bias on the leading side of the belt. Be sure to copy measurements to the return side of the belt.



16. Using the Multitool, carefully skive the top and bottom rubber cover.

Be sure to leave a thin layer of rubber on the carcass for protection.

Measure the top and bottom rubber cover and match to appropriate skiving blade. Do not rely on the manufacturer's watermark for reference.



17. Repeat step 12 following the same staggered pattern for tightening the screws.

Be sure to push the belt all the into the Tru-screw until pushing against the trailing edge



18. Using the Multitool with the saw cutting blade trim the excess of the Tru-screw along the edge of the belt

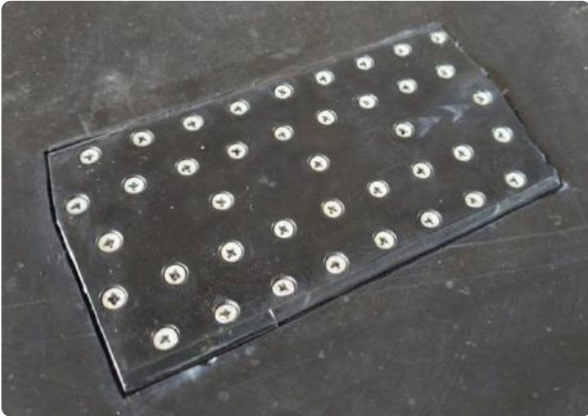


19. Your TRU-SCREW® has now successfully been installed



TRU-TRAC® QUICKFIX PRO (BELT REPAIR PATCHES)

Revolutionize your belt repair with rapid, durable solutions. Crafted with reinforced fabric and high-abrasion rubber, enjoy unparalleled friction protection that doesn't sacrifice flexibility, elongation resistance, or tensile strength.



MAIN FEATURES

- **Belt widths:** 450 to 2100 mm, with wider belts available upon request.
- **Efficient:** Quick & Easy installation, does not require specialised equipment or skills.
- **Durable:** Wear, cut, and leak-resistant.
- **Strong:** High tensile strength and flexible.
- **Cost-Effective:** Tru-Screw is priced to provide an economical solution.
- **Convenient:** No need for pricey equipment. Compatible with belt scrapers.
- **Adaptable:** Available in kit form according to required belt width or in full length rolls.

TRU-TRAC® SPLICING INSTALLATION TOOL KIT

For swift, secure, and efficient conveyor belt repair, the Tru-Trac® Splicing Installation Tool Kit is your go-to solution. Packed with all the necessary tools for quick Tru-Screw® installation, this kit adapts to various applications.



KIT COMPONENTS

- **Power Tools:** Driver/Drill (x1), Skiver (x1).
- **Power Supply:** Batteries (x2), Charger (x1).
- **Blades:** Round Saw Blade (x2), Flat Skiver Blade (x2)
- **Accessories:** Drill Chuck Options (x2), Wet Stone (x1), Carry Case (x1).

Experience unparalleled convenience and effectiveness with the Tru-Trac® Splicing Installation Tool Kit.

TRU-SCREW™ INSTALLATION SERVICES AND TRAINING

Ensure Reliable and Efficient Conveyor Belt Splicing with Tru-Trac's Professional Services

Tru-Trac offers comprehensive installation services and training for the Tru-Screw®, a revolutionary flexible rubber fastener designed for quick and efficient conveyor belt splicing. Our installation and training service capabilities ensure that your Tru-Screw® is installed correctly, maximizing performance and minimizing downtime.

KEY SERVICES:

1. PROFESSIONAL INSTALLATION:

- **Expert Technicians:** Our team of trained professionals ensures that the Tru-Screw® is installed to the highest standards, providing reliable and durable splicing for your conveyor belts.
- **Efficient Process:** The Tru-Screw® can be installed quickly (typically by 1 to 2 persons), reducing your conveyor downtime and maintaining productivity.
- **Versatility:** Suitable for various environments and conditions, including extreme temperatures and abrasive applications.

2. COMPREHENSIVE TRAINING:

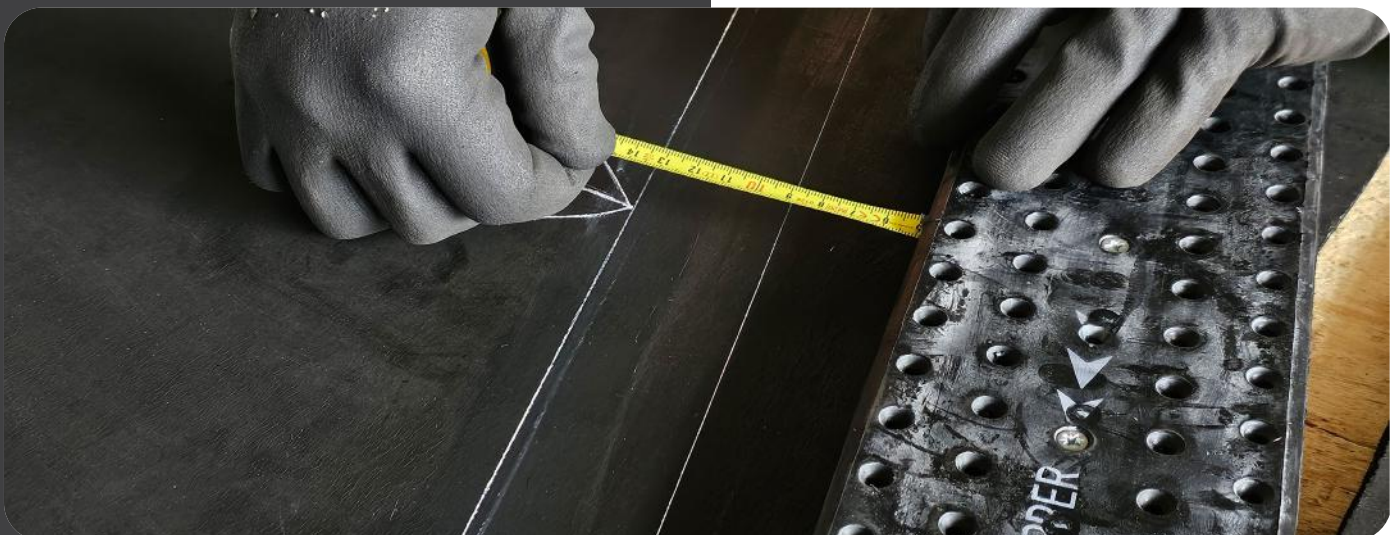
- **On-Site Training:** We provide hands-on training at your location, ensuring your team understands the installation process and can perform it correctly.
- **Detailed Guidance:** Our training covers all aspects of Tru-Screw® installation, from preparation to final checks, ensuring your staff can handle future installations independently.
- **Custom Programs:** Training sessions are tailored to meet the specific needs of your operation, whether it's for routine installations or emergency repairs.

BENEFITS OF TRU-SCREW®:

- **Reduces Downtime:** The quick installation process significantly cuts down on conveyor downtime, ensuring continuous operations.
- **Flexibility and Strength:** The Tru-Screw® provides a robust and flexible splice, compatible with various belt types and applications.
- **Cost-Effective:** Eliminates the need for expensive equipment and minimizes labor costs, making it a cost-effective splicing solution.

WHY CHOOSE TRU-TRAC?

- **Experience and Expertise:** Our team has extensive experience in installing and training for the Tru-Screw®, ensuring a seamless integration into your operations.
- **Reliable Support:** We offer ongoing support and consultations to address any issues and ensure optimal performance of your conveyor systems.
- **Presence Across S.A. and Africa:** With service teams strategically located across South Africa and major mining regions in Africa, we provide accessible and reliable support for your operations.



Document ID: TTR-001Revision: 1.0

Disclaimer

This document is the intellectual property of Tru-Trac Rollers (Pty) Ltd. It contains proprietary information that may be confidential and is intended solely for the viewing and use of the designated recipient. Unauthorized dissemination, distribution, copying, or use of this document is strictly prohibited. We reserve the right to make updates or modifications without prior notice.

Copyright

Copyright © 2024 Tru-Trac Rollers (Pty) Ltd All rights reserved. No part of this publication may be reproduced, distributed, or transmitted in any form or by any means, including photocopying, recording, or other electronic or mechanical methods, without the prior written permission of the publisher. For permission requests, write to the publisher, addressed "Attention: Permissions Coordinator," at the address below. This publication is protected by copyright and all applicable laws. Unauthorized use, duplication, or distribution of this material without express written permission from the publisher is strictly prohibited. Copyright © 2024 by Tru-Trac Rollers (Pty) Ltd. All rights reserved..

Contact Information:

Company: Tru-Trac Rollers (Pty) Ltd

Address: 590 Barolong Street, Icon Industrial Park, Sunderland Ridge,
Centurion, 0157,
South Africa

Phone: +27 12 661 9531

Website: www.tru-trac.com



 +27 12 661 9531

 sales@tru-trac.com

 www.tru-trac.com