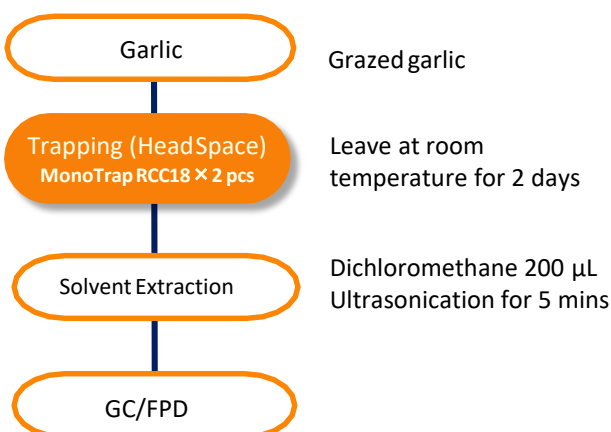


MonoTrap RCC18 (with activated carbon) was used to collect the flavor components of raw gargle in Head Space. Was extracted with dichloromethane and detected by FPD.

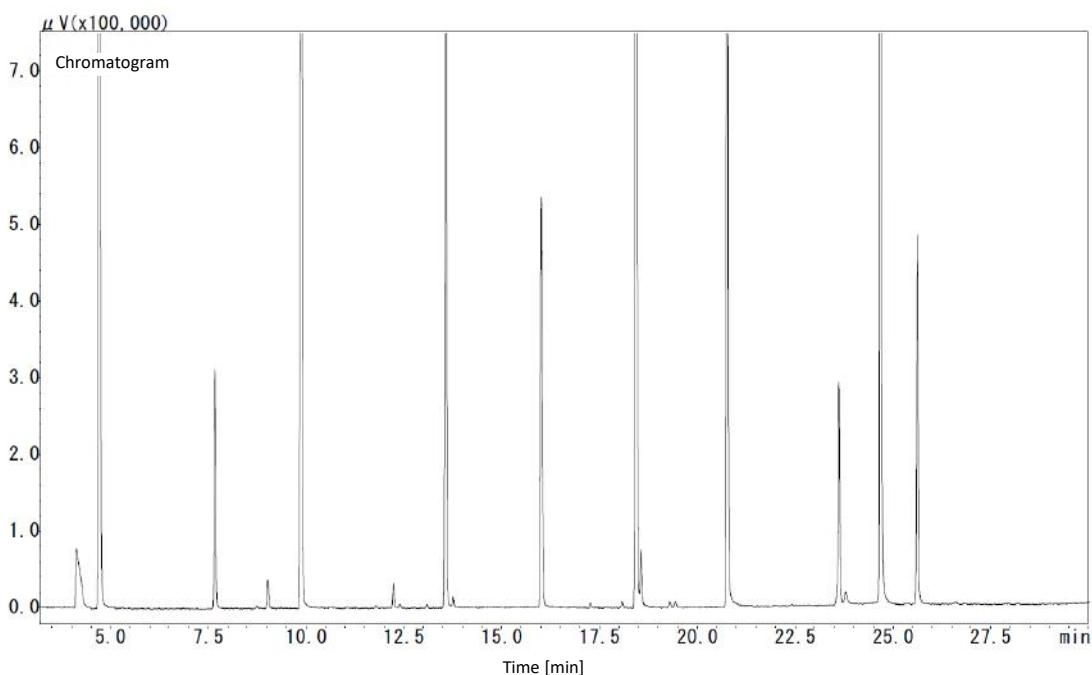
Column : InertCap Pure-WAX 0.25 mm I.D. × 30 m df = 0.25 μm

Protocol



GC Conditions

System	: GC/FPD
Column	: InertCap Pure-WAX 0.25 mm I.D. × 30 m df = 0.25 μm
Col. Temp.	: 40 °C (5 min) - 6 °C/min - 250 °C
Carrier Gas	: He 1 mL/min
Injection	: Split 1:50 250 °C
Detection	: FPD (S)
Sample Size	: 1 μL



GL Sciences disclaims any and all responsibility for any injury or damage which may be caused by this data directly or indirectly. We reserve the right to amend this information or data at any time and without any prior announcement.

GL Sciences, Inc. Japan

22-1 Nishishinjuku 6-Chome
Shinjuku-ku, Tokyo,
163-1130, Japan
Phone: +81-3-5323-6620
Fax: +81-3-5323-6621
Email: world@glsc.co.jp
Web: www.glsciences.com

GL Sciences B.V.

De Sleutel 9
5652 AS Eindhoven
The Netherlands
Phone: +31 (0)40 254 95 31
Email: info@glsciences.eu
Web: www.glsciences.eu

GL Sciences (ShangHai) Ltd.

Tower B, Room 2003,
Far East International Plaza,
NO,317 Xianxia Road,
Changning District.
Shanghai, China P.C. 200051
Phone: +86 (0)21-6278-2272
Email: contact@glsciences.com.cn
Web: www.glsciences.com.cn

GL Sciences, Inc. USA

4733 Torrance Blvd. Suite 255
Torrance, CA 90503
Phone: 310-265-4424
Fax: 310-265-4425
Email: info@glsciencesinc.com
Web: www.glsciencesinc.com

International Distributors

Visit our Website at:

<https://www.glsciences.com/company/distributor.html>