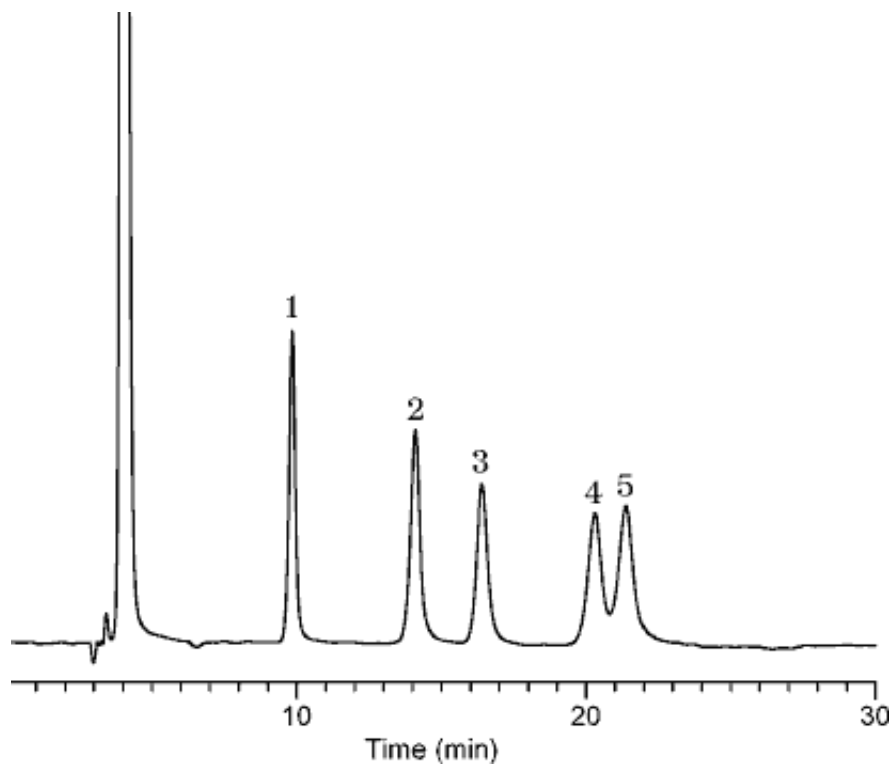


## 41. Sugar alcohol

Data No. LA095-0000



Column	: Inertsil NH2 5µm 250 × 4.6 mm I.D.	Solutes	: 1. Erythritol (2 mg/mL) 2. Xylitol (2 mg/mL) 3. Fructose (6 mg/mL) 4. Sorbitol (2 mg/mL) 5. Mannitol (2 mg/mL)
Column Cat. No.	: 5020-05546		
Eluent	: CH <sub>3</sub> CN/H <sub>2</sub> O = 85/15		
Flow rate	: 1.0 mL/min.		
Col. Temp.	: 30°C		
Detection	: RI		
Injection Vol.	:		
Sample	: Sugar Alcohols		