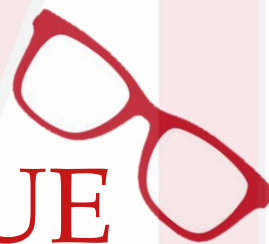


2024


MB OPTICS SAFETY
SDN BHD (489922-M)

PRODUCT CATALOGUE



OZS | CAT | TITMUS | PENTAX | MBOS

CONTACT US

 +6 011-6316 9899 / +6 03-8926 9899

 sales@mbos.com.my

 No 1-15, Jalan Kajang Impian, 43650,
Bandar Baru Bangi, Selangor

WWW.MBOS.COM.MY



OZS
WARRIOR

1.0 OZS SRx

OZS Warrior Rx Eyewear

Introducing OZS Prescription Safety Eyewear – meticulously planned, designed, and crafted entirely in Korea. Our commitment to excellence is reflected in the careful consideration of product quality, comfort, and the latest trends in sports eyewear during the frame design process.

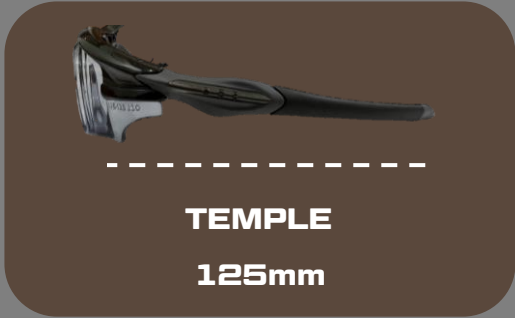
OZS SRX frames undergo rigorous testing and manufacturing in compliance with international safety standards:

- ANSI Z87-2+ (USA)
- EN166F CE (Europe)
- AS/NZS 1337.6 (Australia/New Zealand)
- SS473 Part 2:2011 (Singapore)

Starting from 2023, OZS Safety Eyewear proudly holds the **SIRIM DOSH** approval for our prescription safety glasses, reinforcing our dedication to delivering top-tier quality and adhering to the highest safety standards.

One standout product is the Warrior frame, not just a pair of prescription safety eyewear but a versatile option for sports enthusiasts. Ideal for activities like contact sports, cycling, water sports, and more, the Warrior frame not only provides prescription clarity but also protects the wearer's eyes during physical activities, preventing eye strain for an optimal exercise experience.

Elevate your eyewear experience with OZS Safety Eyewear – where safety, quality, and versatility seamlessly blend. Choose our SIRIM DOSH-approved prescription safety glasses and the multi-functional Warrior frame, where protection meets performance.



Polycarbonate 1.59 Lens

- Meets or exceeds ANSI Z87.1 Standard
- Ultra-Light lens
- Anti-Reflective, Full protection against UV rays
- Anti-Static & Anti-EMI

**Adjustable
Nose Pads**

**Side Protection
Shield**

**Replaceable
Temple Tips**



ANSI Z87-2+



EN 166F CE



SS 473: Part 2: 2011



ANS / NZS 1337.6



ACB PC 01



OZS

Warrior 101

Matte Black
54 x 20 x 125



Shiny Black/Grey/Clear
54 x 20 x 125



OZS

Warrior 101

Matte Black/Blue
54 x 20 x 125



Matte Black/Red
54 x 20 x 125



OZS

Warrior 101

Shiny Black/Grey
54 x 20 x 125



Shiny Black/Grey/Smoke
54 x 20 x 125



OZS

Warrior 101

Shiny Black/Yellow
54 x 20 x 125



Shiny Black/Yellow/Smoke
54 x 20 x 125



OZS

Warrior 101

Shiny Black/Green
54 x 20 x 125



Shiny Black/Green/Smoke
54 x 20 x 125



OZS

Warrior 101

Matte Orange/Black
54 x 20 x 125



Matte Green/Black
54 x 20 x 125



OZS

Warrior 101

Shiny Red/White
54 x 20 x 125



Special Military
54 x 20 x 125





Polycarbonate 1.59 Lens

- Meets or exceed ANSI Z87.1 Standard
- Ultra-Light lens
- Anti-Reflective, Full protection against UV rays
- Anti-Static & Anti-EMI

Adjustable Nose Pads

Removable Side Protection Shield

Replaceable Temple Tips



LENS WIDTH

54mm | 58mm



BRIDGE

18mm



TEMPLE

136mm

OZS Warrior Rx Eyewear

Introducing OZS Prescription Safety Eyewear – meticulously planned, designed, and crafted entirely in Korea. Our commitment to excellence is reflected in the careful consideration of product quality, comfort, and the latest trends in sports eyewear during the frame design process.

OZS SRX frames undergo rigorous testing and manufacturing in compliance with international safety standards:

- ANSI Z87-2+ (USA)
- EN166F CE (Europe)
- AS/NZS 1337.6 (Australia/New Zealand)
- SS473 Part 2:2011 (Singapore)

Starting from 2023, OZS Safety Eyewear proudly holds the **SIRIM DOSH** approval for our prescription safety glasses, reinforcing our dedication to delivering top-tier quality and adhering to the highest safety standards.

One standout product is the Warrior frame, not just a pair of prescription safety eyewear but a versatile option for sports enthusiasts. Ideal for activities like contact sports, cycling, water sports, and more, the Warrior frame not only provides prescription clarity but also protects the wearer's eyes during physical activities, preventing eye strain for an optimal exercise experience.

Elevate your eyewear experience with OZS Safety Eyewear – where safety, quality, and versatility seamlessly blend. Choose our SIRIM DOSH-approved prescription safety glasses and the multi-functional Warrior frame, where protection meets performance.



ANSI Z87-2+



EN 166F CE



SS 473: Part 2: 2011



ANS / NZS 1337.6



ACB PC 01



OZS

Warrior 202

Matte Black / Red

54 x 18 x 136

58 x 18 x 136



Matte Full Black

54 x 18 x 136

58 x 18 x 136



OZS

Warrior 202

Smoke Grey/Green

54 x 18 x 136

58 x 18 x 136



Smoke Grey/Red

54 x 18 x 136

58 x 18 x 136





2.0 CAT SRx

Cat RX Safety Eyewear

Guaranteed against manufacturing faults for the life of the prescription, Cat RX safety eyewear is a better value and safer investment than repeated purchases of throwaway specs over the same time period. It's a fact that spectacle wearers are already in the habit of caring for their optical frames.

Three polycarbonate side shield options have been specially designed to offer both lateral and upper protection. No shield type uses rivets so the overall effect is as streamlined and 'invisible' as possible. Because they cannot be removed after the frame is glazed there is no risk of being unprotected when wearing the frames.

Option 1: Integrated side shields are permanently built-in to the frame at the point of manufacture.

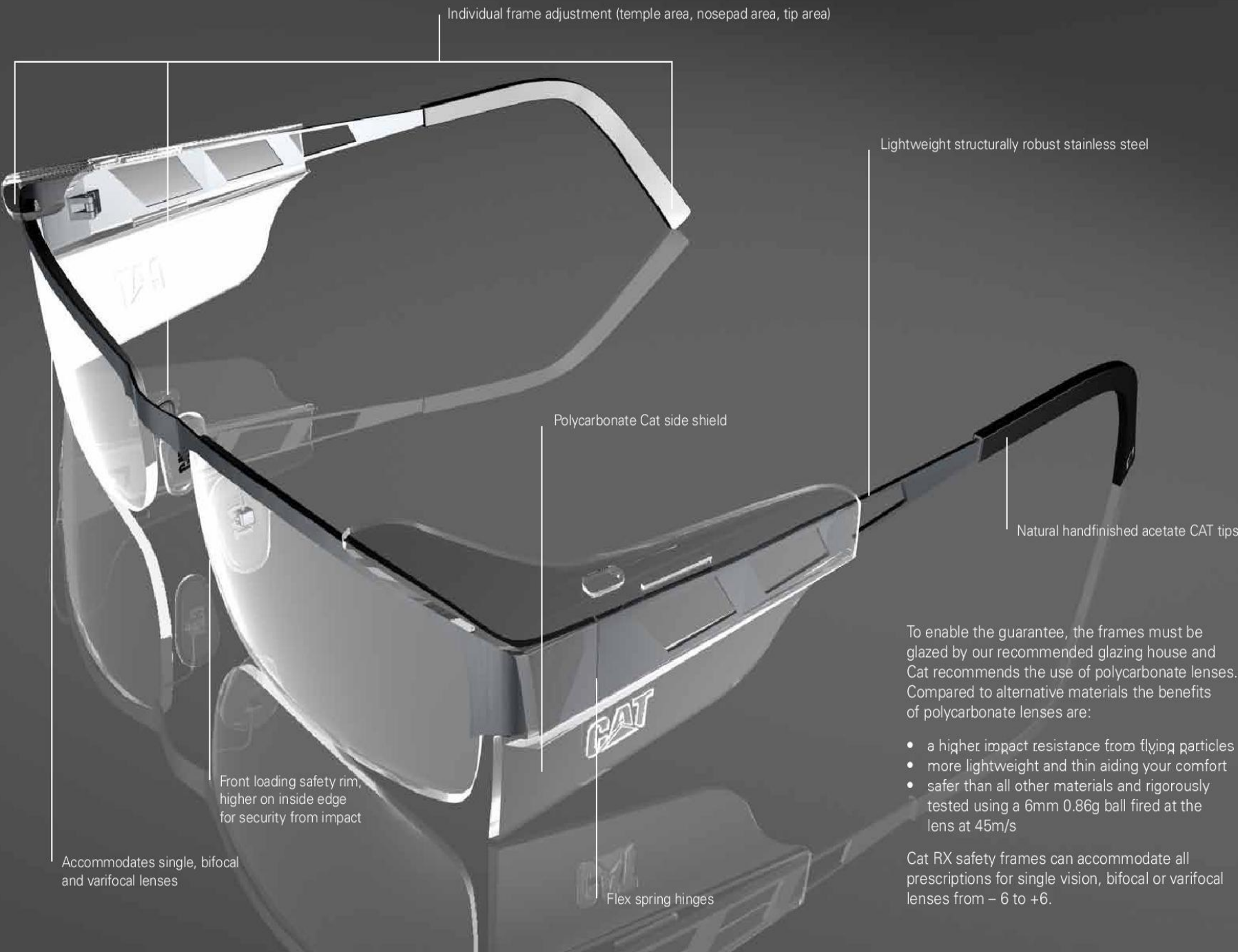
Option 2: Snap-lock side shields arrive separate to the frame, but on glazing the side shield is permanently locked to the frame.

Option 3: Removeable side shield can be taken off after work.

Meeting the legislation means ensuring frames are worn at all times, so it helps to choose stylish frames that you enjoy wearing. Catering for the bigger eyesize (up to 58) each frame is constructed from robust construction materials with industrial Cat signature details.

Each optical frame is CE marked and meets and exceeds the following international standards for safety:

- BS EN 166
- ANSI Z87.1:2003
- CSA Z94.3:2007
- BSEN 1811 Nickel Release
- BSEN 12870 General Standards for Ophthalmic Frames



To enable the guarantee, the frames must be glazed by our recommended glazing house and Cat recommends the use of polycarbonate lenses. Compared to alternative materials the benefits of polycarbonate lenses are:

- a higher impact resistance from flying particles
- more lightweight and thin aiding your comfort
- safer than all other materials and rigorously tested using a 6mm 0.86g ball fired at the lens at 45m/s

Cat RX safety frames can accommodate all prescriptions for single vision, bifocal or varifocal lenses from - 6 to +6.

BARRIER



full frame ■ stainless steel ■ integrated side shield

Frame Specification

- machinery inspired detail to temples
- durable stainless steel chassis
- precision laser engraved logo
- integrated side shield
- shatterproof PC side shields
- fully adjustable acetate tips
- silicone anti-slip nose pads

Frame Colours

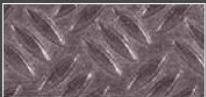
003 Matt Brown



004 Matt Black



005 Matt Gun



003 Matt Brown



005 Matt Gun

RESISTOR



full frame • metal • pop on shield

Frame Specification

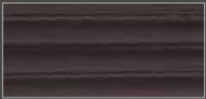
- integral monoblock spring hinges
- deboss temple design with precision laser engraved logo
- robust frame construction
- pop on side shield
- shatterproof PC side shields
- fully adjustable acetate tips
- silicone anti-slip nose pads

Frame Colors

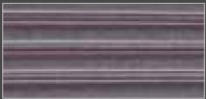
003 Matt Brown



004 Matt Black



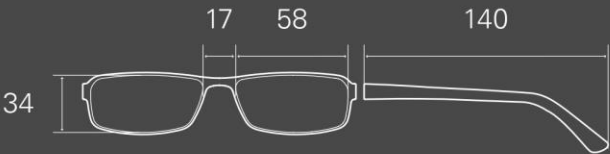
005 Matt Gun



003 Matt Brown



004 Matt Black



DEFENDER



full frame ■ metal ■ pop on shield

Frame Specification

- integral monoblock spring hinges
- deboss temple design with precision laser engraved logo
- robust double bridge design
- pop on side shield
- shatterproof PC side shields
- fully adjustable acetate tips
- silicone anti-slip nose pads

Frame Colours

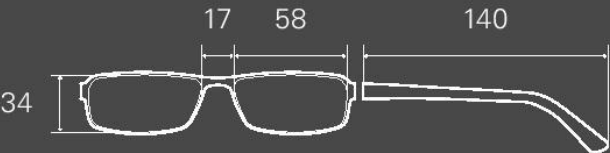
003 Matt Brown



004 Matt Black



005 Matt Gun



004 Matt Black



005 Matt Gun

INSULATOR



full frame ■ CP/PC ■ integrated side shield

Frame Specification

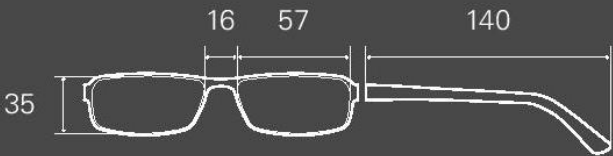
- non conductive - no metal parts
- integrated side shield
- shatterproof PC side shields
- ultra lightweight universal fit

Frame Colours

100 Crystal Clear / Black



104 Matt Black



104 Matt Black



103 Brown

CARRIER



full frame • CP/PC • integrated side shield

Frame specification

- non-conductive – no metal parts
- integrated side shield
- shatterproof PC side shields
- ultra lightweight universal fit



Front View



Top View



3.0 CAT Plano

... Cat® Protective Eyewear

Many eye injuries occur when glasses are lifted to get a closer look – that's why **clarity of vision** through your protective eyewear is crucial. Keep them on throughout the job!

Cat® safety eyewear eliminates the reasons why you'd remove the frame. Anti-fog coatings and ventilation systems, anti-scratch and easy clean are all features that **enhance your visual experience**. Single hand lens angle adjustment means you don't have to remove the frame to alter the inclination.

As **a frame is only as good as its fit** and no two faces are alike, Cat frames are ergonomically **designed to flex-fit your individual facial shape**. Temple lengths and angles can be **individually adjusted**, and snap lock into position for security.

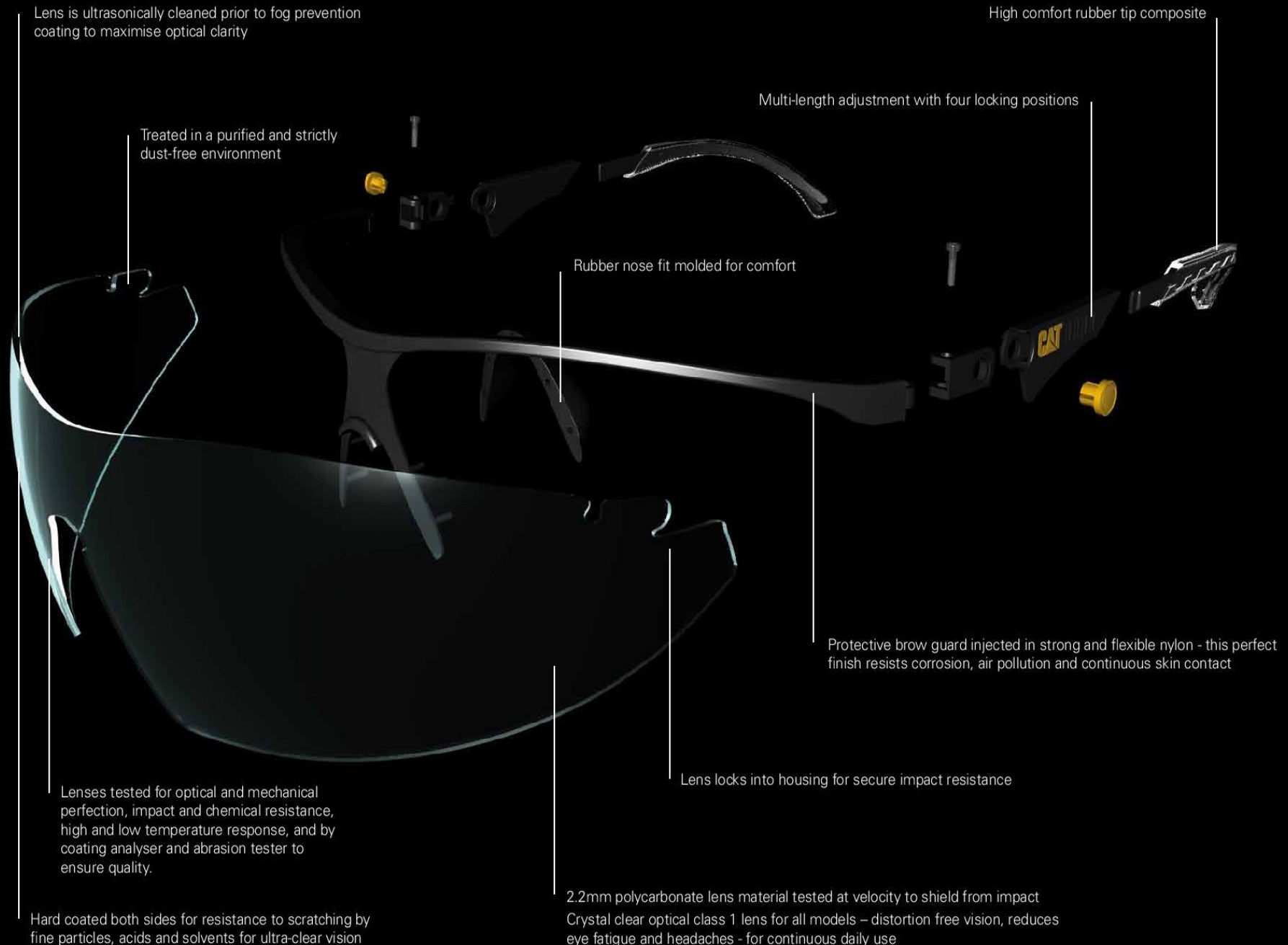
Cat frames offer **optimum protection**. Polycarbonate lenses provide the ultimate ocular shield, locked in three directions to **resist impact** from front or side. Frame materials are tested to resist chemicals and impact from particles.

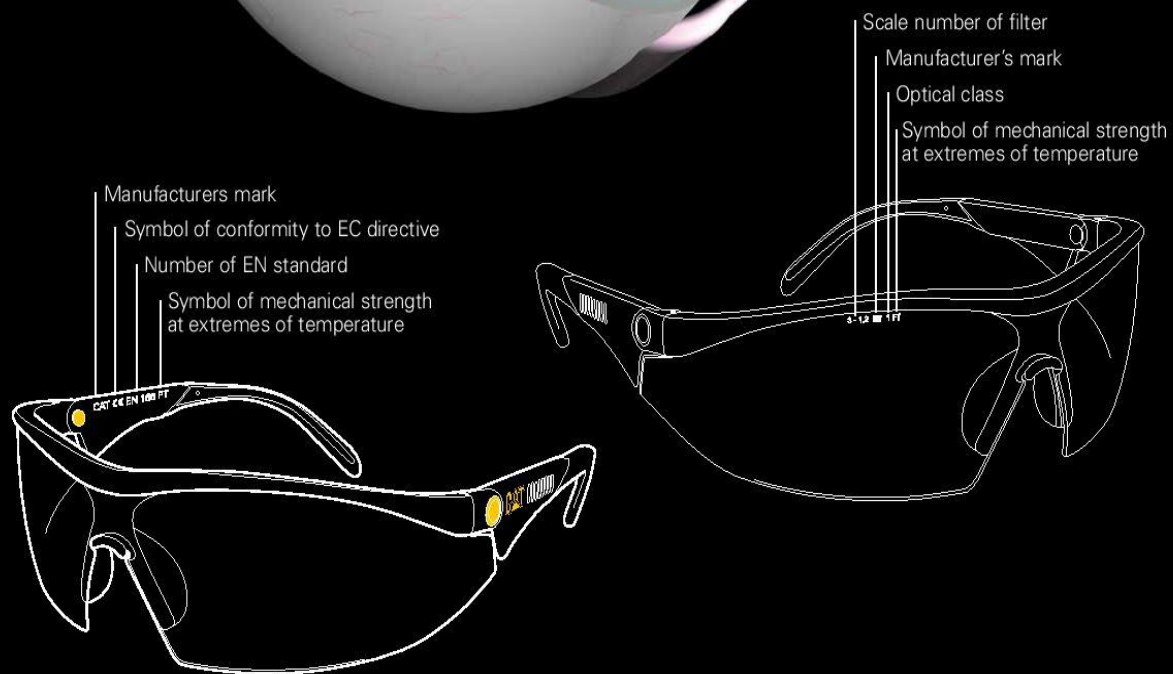
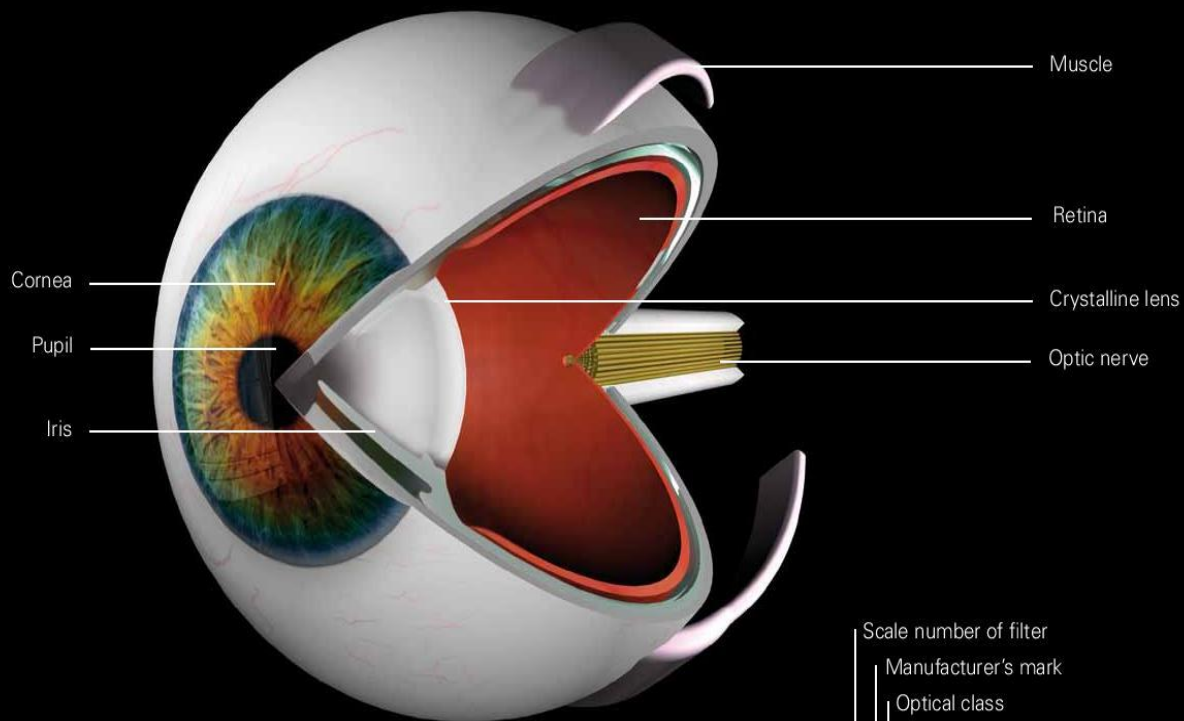
Cat has the **comfort and style** angle covered too. Looking good and feeling good in your eyewear increases wearability. Flexible materials offer a **pressure-free fit for continuous wear**. Tips and bridges are non-slip. Frames are lightweight.

Engineered to the core for total comfort, optimised reaction times and better risk assessment. Your clear vision ensures reduced risk of injury.

Cat protective eyewear meets and exceeds the following international standards for quality and safety:

CE EN 166:2001
ANSI Z87.1:2003
CSA Z94.3:2007
AS/NZS 1337



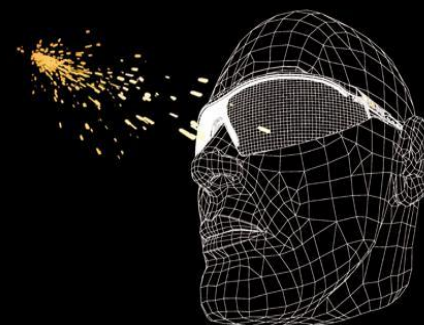


Cat protective eyewear meets and exceeds the following international standards for quality and safety:

CE EN 166:2001
ANSI Z87.1:2003
CSA Z94.3:2007
AS/NZS 1337

The standards scientifically prove that all Cat frames:

- Withstand extreme pressures of heat and cold
- Resist mass impact at velocity
- Shield against chemical splash
- Provide excellence in optical quality including resilience to UV and other harmful rays



... your eyes

The eye is a fragile organ – a small fleck of dust can cause conjunctivitis, a solid particle at high speed can cause a perforation of the eye, the detachment of the retina, or permanent loss of sight.

Acute irritation of the eye and burns from chemicals and solvents can also cause partial to total loss of sight.

In the UK the department of Trade and Industry reports 120,000 accidents involving eye injuries every year. In the US 1000 work-related eye injuries occur every day. Over 10% of these result in a missed day of work. The majority of these come from foreign objects, blows, chemicals and cuts to the eye – which are all preventable by wearing the correct safety eyewear.

DIGGER



Lens Specification

- lens inclination adjustment with snap-lock ratchet mechanism
- single wraparound 180 degree lens
- 2mm polycarbonate material tested at velocity to shield from impact
- crystal clear optical class 1 lens recommended for continuous wear
- fog prevention coating
- hard coated both sides for resistance to scratching

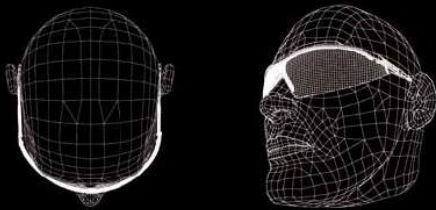
Frame Chassis

- protective brow guard injected in buff polished nylon
- multi-length temple adjustment with 4 locking positions
- high comfort PVC tip composite
- PVC nose fit moulded for comfort

Weight - 26g / 0.917oz

Lens Colours

- Digger -100**
Clear - filter category 2C-1.2
- Digger -103**
Brown - filter category 5-2.5
- Digger -104**
Smoke - filter category 5-2.5
- Digger -105**
Blue Mirror - filter category 5-2.5
- Digger -112**
Yellow - filter category 2-1.2
- Digger -116**
Orange - filter category 2-1.7



Universal wrap fit designed around different face shapes



DOZER



Lens Specification

- four lens inclination adjustments with snap-lock ratchet mechanism
- single wraparound 180 degree lens
- 2.2mm polycarbonate material tested at velocity to shield from impact
- crystal clear optical class 1 lens recommended for continuous wear
- fog prevention coating
- hard coated both sides for resistance to scratching

Frame Chassis

- multi-length temple adjustment with 4 locking positions
- high comfort PVC tip composite
- Rubber nose fit soft-moulded for comfort

Weight - 24g / 0.846oz

Lens Colours

Dozer -100
Clear - filter category 2C-1.2

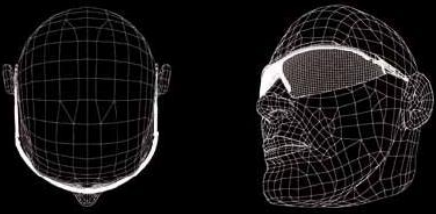
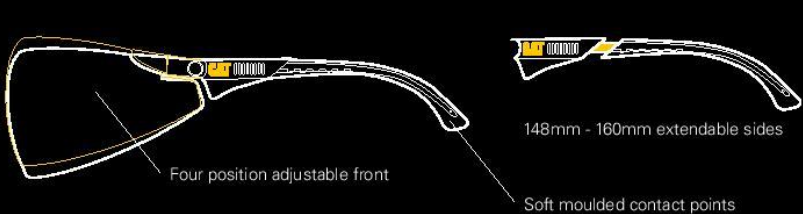
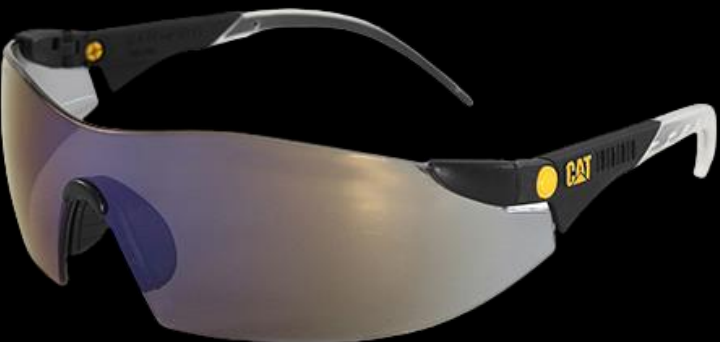
Dozer -103
Brown - filter category 5-2.5

Dozer -104
Smoke - filter category 5-2.5

Dozer -105
Blue Mirror - filter category 5-2.5

Dozer -112
Yellow - filter category 2-1.2

Dozer -116
Orange - filter category 2-1.7



Universal wrap fit designed around different face shapes

TREAD



Lens Specification

- three lens inclination adjustments with snap-lock ratchet mechanism
- 2.2mm polycarbonate material tested at velocity to shield from impact
- crystal clear optical class 1 lens recommended for continuous wear
- fog prevention coating
- hard coated both sides for resistance to scratching

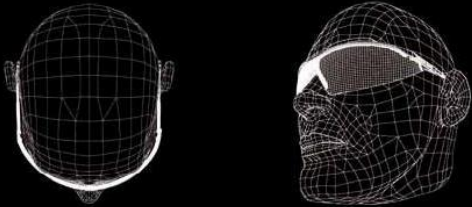
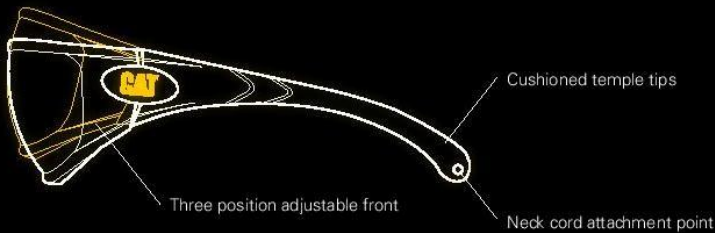
Frame Chassis

- flex temples with integrated cushioning system
- neck cord attachment facility
- upper and lower eye protection, vented for air flow and fog resistance
- soft touch vented nose piece

Weight - 29g / 1.02oz

Lens Colours

- Tread - 100**
Clear - filter category 2C-1.2
- Tread - 103**
Brown - filter category 5-2.5
- Tread - 104**
Smoke - filter category 5-2.5
- Tread - 105**
Blue Mirror - filter category 5-2.5
- Tread - 112**
Yellow - filter category 2-1.2
- Tread - 116**
Orange - filter category 2-1.7



Universal wrap fit designed around different face shapes



Titmus

4.0 Titmus SRx



Features

- TR90 nylon
- No metal content
- Removable/replaceable dust dam
- Adjustable nose pads
- Superior coverage
- 17° face form-wrap, integral shield design

SW06

57 x 16 x 125



**Clear
Body/Yellow/Black**



Black/Yellow



Orange/Yellow

Titmus Safety Eyeglasses

Titmus Optical started in Petersburg's, Virginia over 100 years ago. It is now recognized as the largest manufacturer of prescription protective eyewear in the world. Titmus is the leader in creating premium prescription safety eyeglass frames. Fashionable, superbly engineered, and flawlessly manufactured – people are happy to wear Titmus frames on the job – even without the mandate of safety regulations. Titmus combine functionally engineered design with contemporary good looks and thoroughly tested materials to make the highest quality of prescription safety eyewear.

SWRx Collection

The SWRx Collection, introduced in 2005, has aggressively out sold all of our other styles. Known for aggressive designs and superior coverage, this group of safety frame has set a new standard for “being in the right place at the right time”.

Pentax ZT200 Series



Gray and Yellow with Clear Carrier

- Brand *Pentax*
- Colours *Black, Blue, Gray, Yellow, Green*
- Frame Feature *Adjustable Nose pad, Brown Guard, Non-Conductive*
- Frame *Plastic*
- Prescription *Available*
- Safety Rating *ANSI Z87.1, ASTM D149-09*



Gray and Yellow with Smoke Carrier



BRIDGE
20mm



TEMPLE
126mm



LENS WIDTH
54mm



Black and Green with Clear Carrier



Black and Green with Smoke Carrier



Blue and Gray with Clear Carrier



Blue and Gray with Smoke Carrier

Pentax ZT35 Series



Matte Gray with Black



Shiny Black with Blue

- Brand *Pentax*
- Colours *Black, Blue, Gray*
- Frame Feature *Adjustable Temple, Foam Gasket, Non-Conductive*
- Frame *Plastic*
- Prescription *Available*
- Safety Rating *ANSI Z87.1, ASTM D149-09*



BRIDGE
20mm



TEMPLE
125mm



LENS WIDTH
57mm

Thank you



MBos
MB OPTICS SAFETY SDN. BHD



+6 011-6316 9899
+6 03-8926 9899



sales@mbos.com.my



No 1-15, Jalan Kajang Impian 1/11,
43650 Bandar Baru Bangi, Selangor



www.mbos.com.my