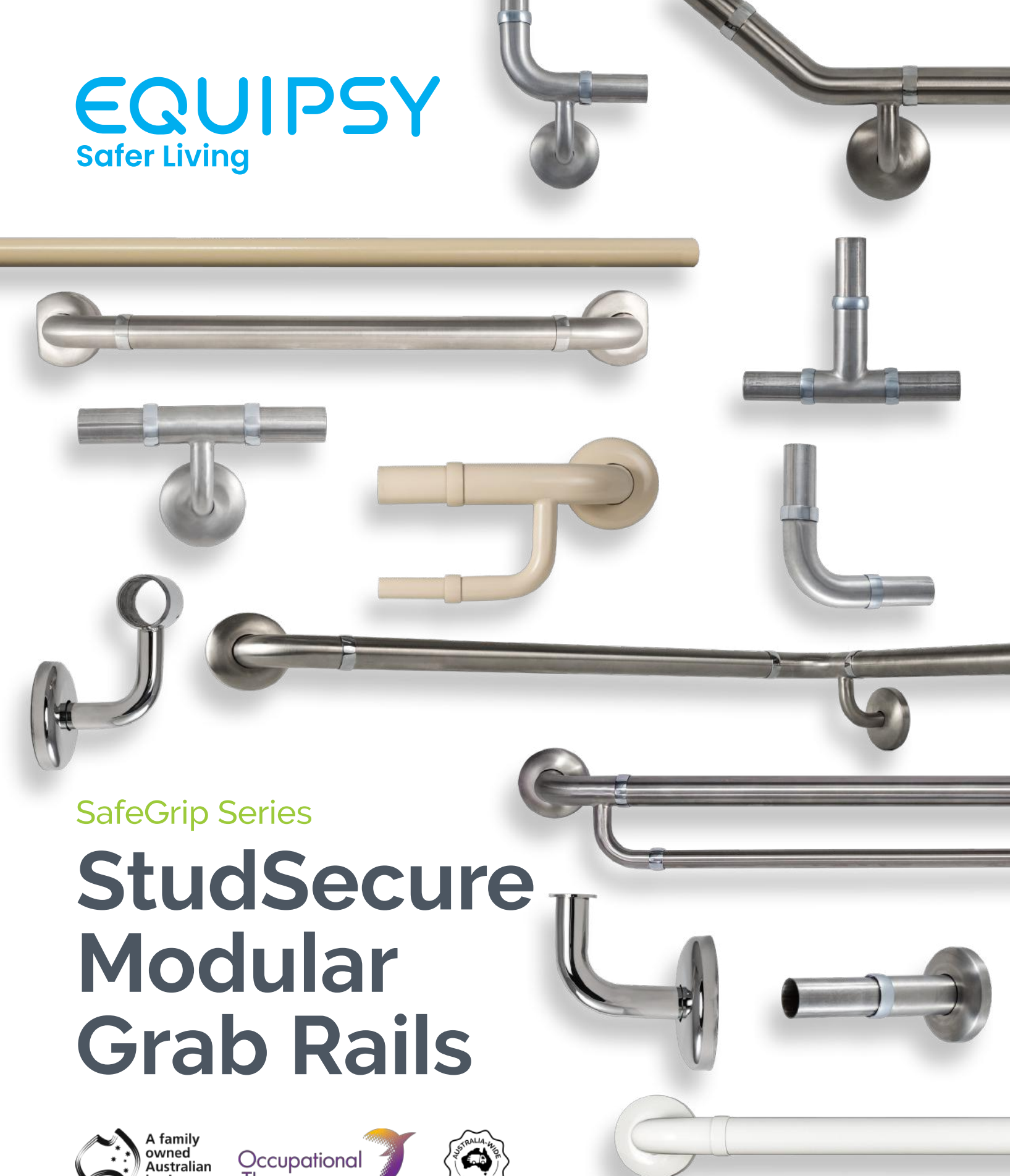


EQUIPSY
Safer Living



SafeGrip Series

StudSecure Modular Grab Rails



One Stop Shop



25 Years of
Building
Experience



Custom
Manufacturing



Quick
Turnaround

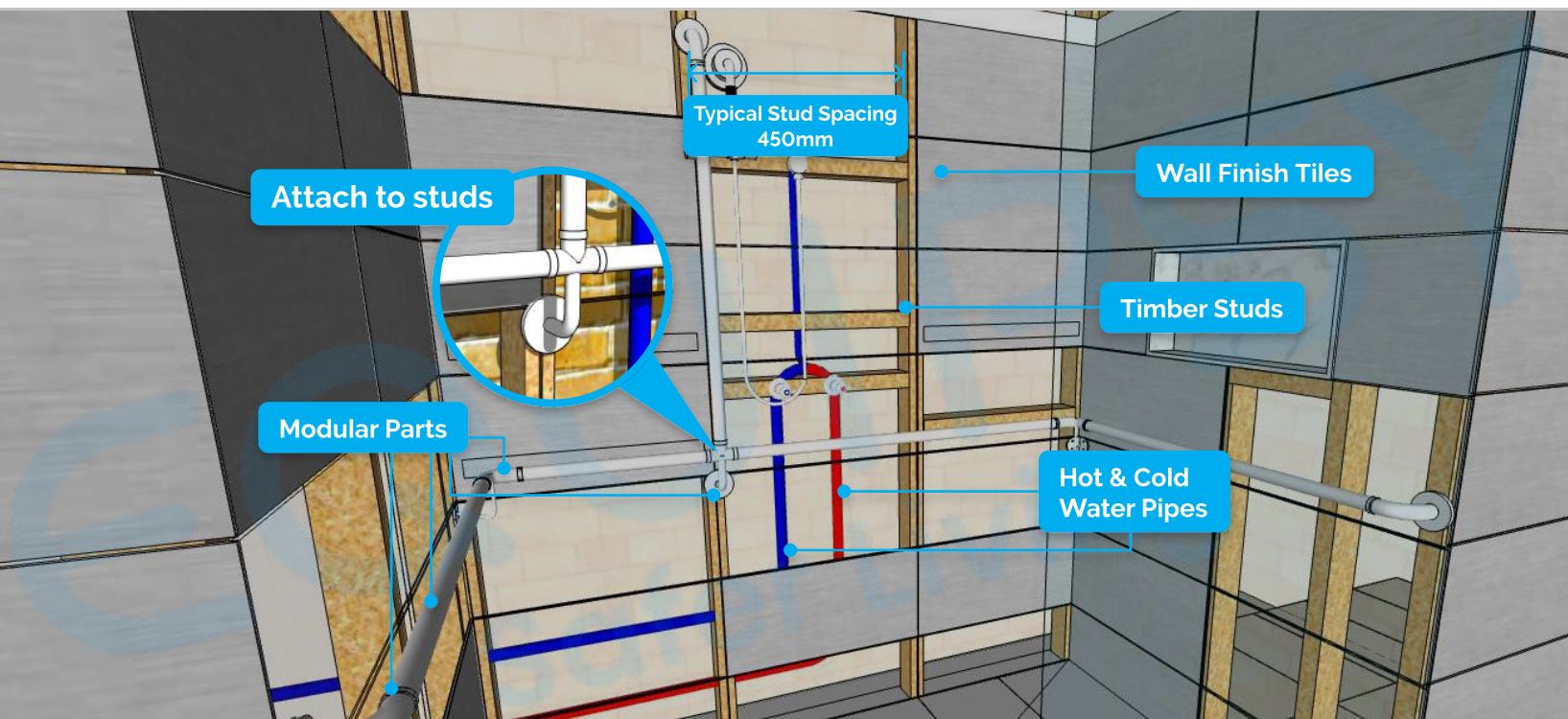


Tailored Service



Tested Safety
Products

StudSecure Modular Grab Rails



Our **StudSecure Modular Grab Rail** offers a versatile and effective solution for enhancing home accessibility and safety. Perfect for homeowners, builders, handymen, and occupational therapists, this rail system features:

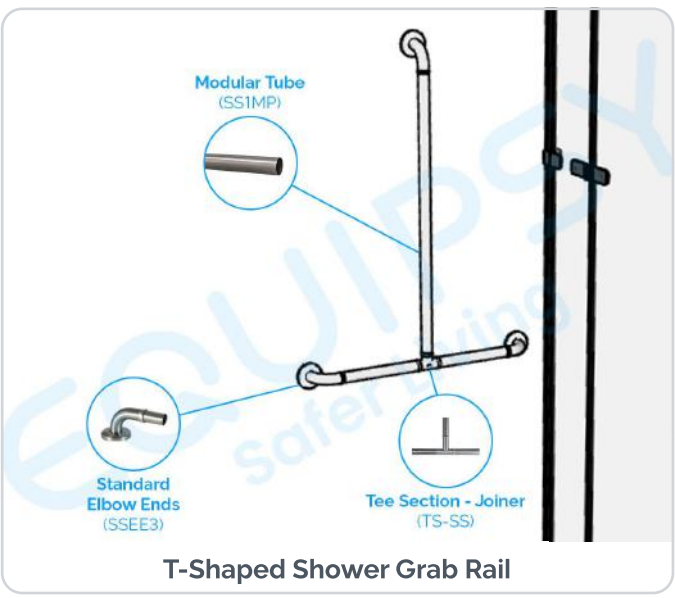
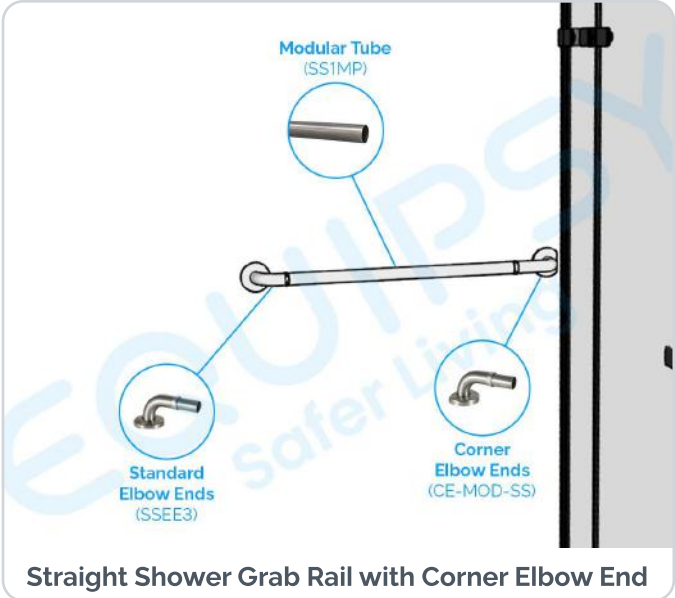
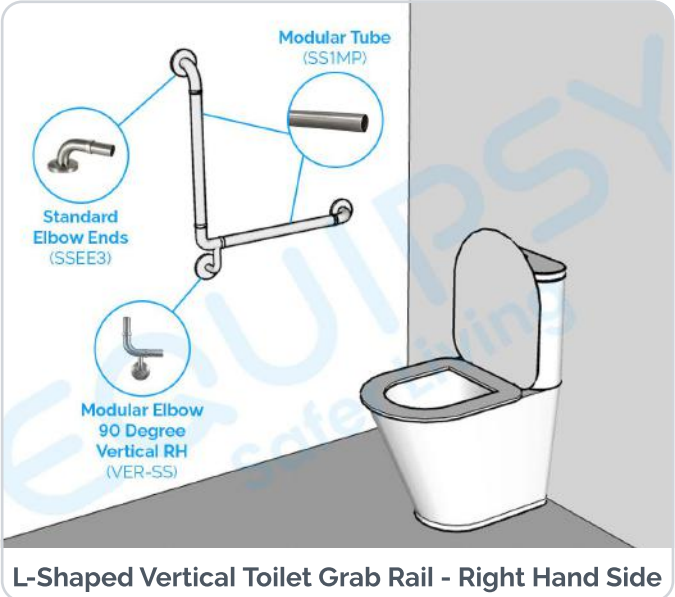
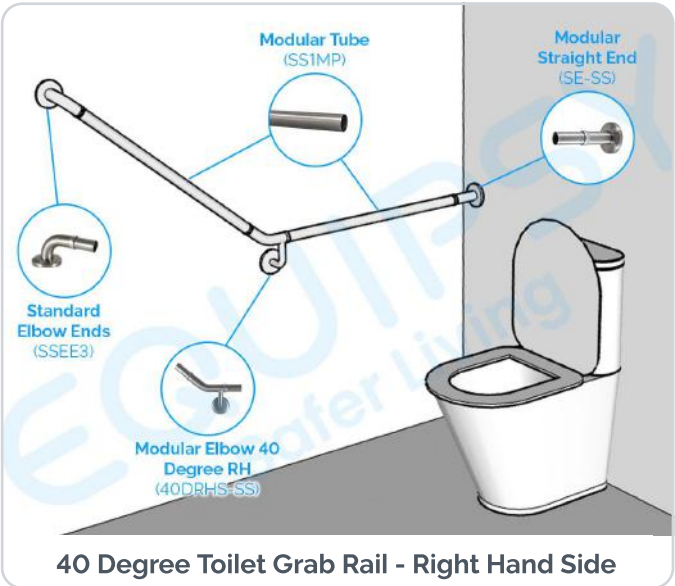
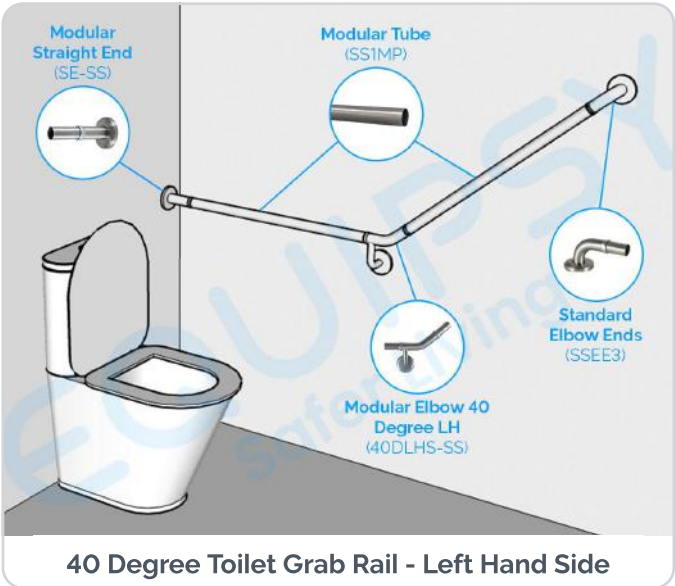
- **Secure Fit:** Pipes can be adjusted to align with wall studs, ensuring a sturdy and customised installation.
- **Adjustable Design:** Includes a variety of modular parts, allowing for flexible configurations based on the type of modification required to suit your requirements.
- **Simple Installation:** Quick and straightforward to set up and modify as needed.
- **Safety-Enhancing:** Provides added support to prevent falls and improve mobility.
- **Cost-Effective:** Practical solution without major renovations.

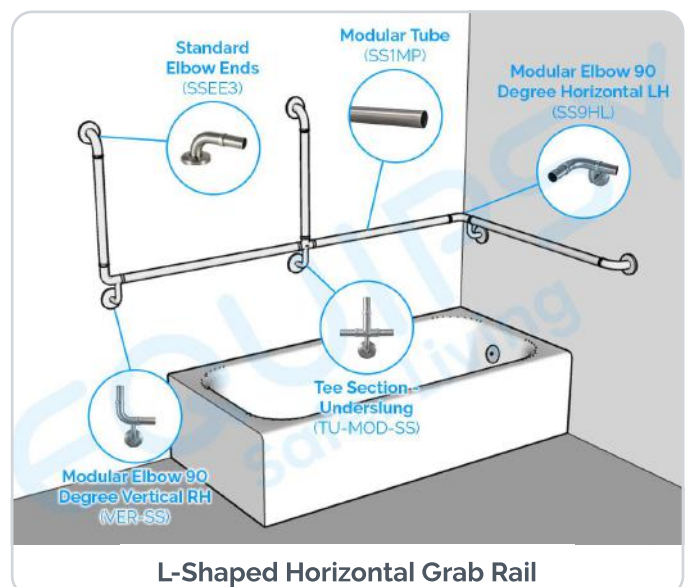
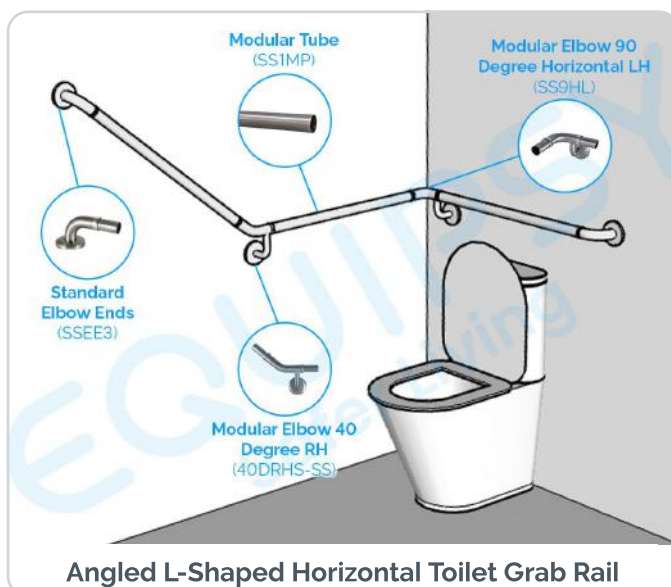
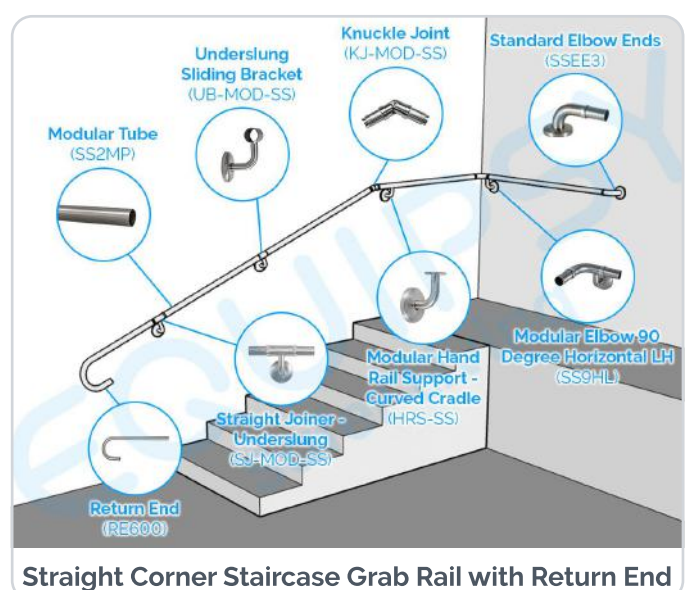
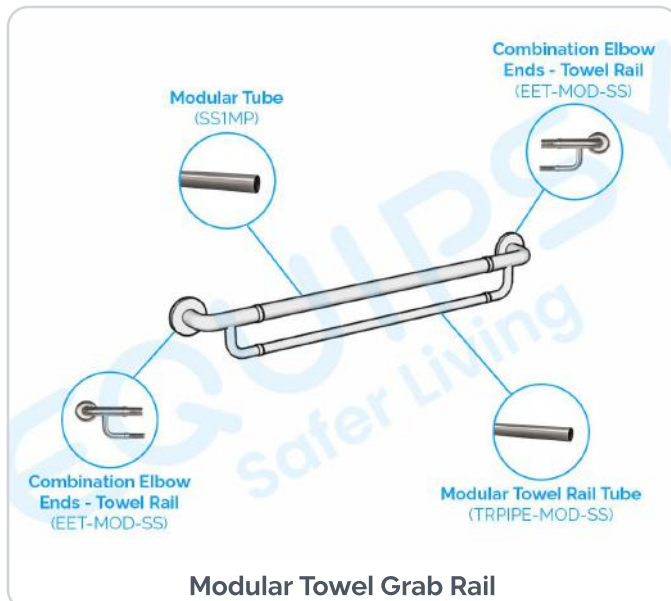
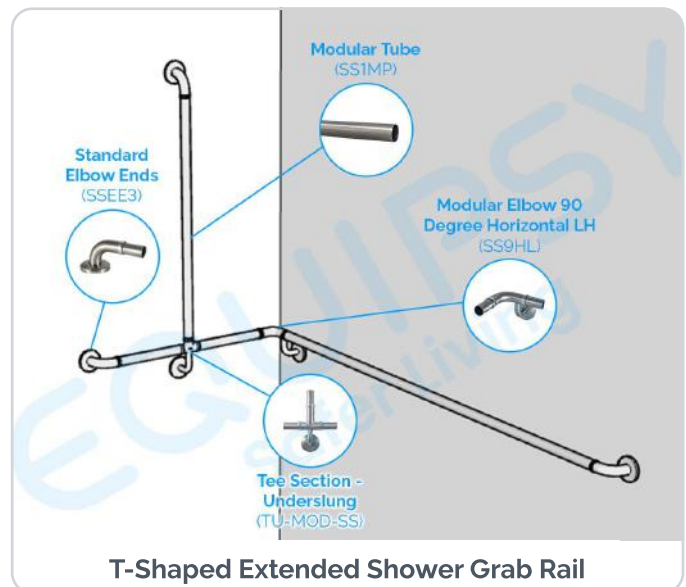
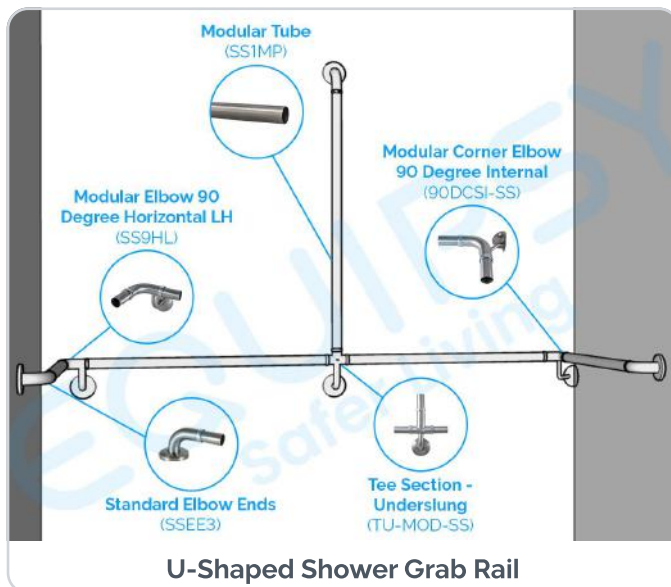
Choose **StudSecure Modular Grab Rail** for a reliable, adaptable, and effective home enhancement solution.

Completed Installs



StudSecure Modular Grab Rails Popular Assemblies





StudSecure Modular Grab Rails Product Range


Elbows & Ends



Standard Elbow Ends

- 90-degree elbow ends
- Round flange cover
- Five-hole fixing
- Concealed appearance
- Packaged as a pair

Finishes	SKU
Brushed Satin	SSE33
Polished Chrome	PSEE3
Smooth Ivory	IEE3
Smooth White	WEE3
Black Satin	BSEE3



Corner Elbow Ends

- 90-degree elbow ends
- Squared off flange
- Three-hole fixing
- Concealed appearance
- Packaged as a pair


Finishes	SKU
Brushed Satin	CE-MOD-SS
Polished Chrome	CE-MOD-PS
Smooth Ivory	CE-MOD-I
Smooth White	CE-MOD-W



Elbow Ends - Single Hold Fixing

- 90-degree elbow ends
- Narrow flange
- Single hole fixing
- Fits in tight spaces
- Packaged as a pair


Finishes	SKU
Brushed Satin	SHF-MOD-SS
Polished Chrome	SHF-MOD-PS
Smooth Ivory	SHF-MOD-I
Smooth White	SHF-MOD-W



Modular Elbow 90 Degree Horizontal LH

- 90-degree horizontal bend
- Underslung located on LHS when back facing wall
- Round flange cover
- Five-hole fixing


Finishes	SKU
Brushed Satin	SS9HL
Polished Chrome	PS9HL
Smooth Ivory	I9HL
Smooth White	W9HL
Black Satin	BS9HL



Modular Elbow 90 Degree Horizontal RH

- 90-degree horizontal bend
- Underslung located on RHS when back facing wall
- Round flange cover
- Five-hole fixing

Finishes	SKU
Brushed Satin	SS9HR
Polished Chrome	PS9HR
Smooth Ivory	I9HR
Smooth White	W9HR
Black Satin	BS9HR



Modular Elbow 90 Degree Vertical LH

- 90-degree vertical bend
- Underslung located on far LHS
- Round flange cover
- Five-hole fixing
- Concealed appearance

Finishes	SKU
Brushed Satin	VEL-SS
Polished Chrome	VEL-PS
Smooth Ivory	VEL-I
Smooth White	VEL-W



Modular Elbow 90 Degree
Vertical RH

- 90-degree vertical bend
- Underslung located on far RHS
- Round flange cover
- Five-hole fixing
- Concealed appearance

Finishes	SKU
Brushed Satin	VER-SS
Polished Chrome	VER-PS
Smooth Ivory	VER-I
Smooth White	VER-W



Modular Elbow 40 Degree LH

- 40-degree offset angle
- Underslung located on LHS
- Round flange cover
- Five-hole fixing
- Concealed appearance

Finishes	SKU
Brushed Satin	40DLHS-SS
Polished Chrome	40DLHS-PS
Smooth Ivory	40DLHS-I
Smooth White	40DLHS-W



Modular Elbow 40 DegreeRH

- 40-degree offset angle
- Underslung located on RHS
- Round flange cover
- Five-hole fixing
- Concealed appearance

Finishes	SKU
Brushed Satin	40DHRS-SS
Polished Chrome	40DHRS-PS
Smooth Ivory	40DHRS-I
Smooth White	40DHRS-W



Modular Elbow 40 Degree
Inverted LH

- 40-degree offset angle inverted
- Underslung located on RHS
- Round flange cover
- Five-hole fixing
- Concealed appearance

Finishes	SKU
Brushed Satin	40DLHSI-SS
Polished Chrome	40DLHSI-PS
Smooth Ivory	40DLHSI-I
Smooth White	40DLHSI-W



Modular Elbow 40 Degree
Inverted RH

- 40-degree offset angle inverted
- Underslung located on LHS
- Round flange cover
- Five-hole fixing
- Concealed appearance

Finishes	SKU
Brushed Satin	40DRHSI-SS
Polished Chrome	40DRHSI-PS
Smooth Ivory	40DRHSI-I
Smooth White	40DRHSI-W



Modular Corner Elbow 90
Degree Internal

- 90-degree horizontal bend
- Corner elbow bracket
- Right angled internal flange
- Three-hole fixing

Finishes	SKU
Brushed Satin	90DCSI-SS
Polished Chrome	90DCSI-PS
Smooth Ivory	90DCSI-I
Smooth White	90DCSI-W

Diameter Ø32mm



Finishes



Brushed
Satin



Polished
Chrome



Smooth
Ivory



Smooth
White



Black
Satin*

*Black satin is only available for selected products.



Modular Corner Elbow 90 Degree External

- 90-degree horizontal bend
- Corner elbow bracket
- Right angled external flange
- Three-hole fixing

Finishes	SKU
Brushed Satin	90DCSE-SS
Polished Chrome	90DCSE-PS
Smooth Ivory	90DCSE-I
Smooth White	90DCSE-W



Modular Straight End

- Overall 150mm length
- Round flange cover
- Five-hole fixing
- Concealed appearance

Finishes	SKU
Brushed Satin	SE-SS
Polished Chrome	SE-PS
Smooth Ivory	SE-I
Smooth White	SE-W



Knuckle Joint

- In-house design
- Adjustable elbow joint
- Allen key front fit design
- Joining piece 90-180 degree

Finishes	SKU
Brushed Satin	KJ-MOD-SS
Polished Chrome	KJ-MOD-PS
Smooth Ivory	KJ-MOD-I
Smooth White	KJ-MOD-W

Bends



Bend 90 Degree

- 90-degree bend
- Fits between tubes
- No screws required

Finishes	SKU
Brushed Satin	90-MOD-SS
Polished Chrome	90-MOD-PS
Smooth Ivory	90-MOD-I
Smooth White	90-MOD-W



Bend 40 Degree

- 40-degree bend
- Fits between tubes
- No screws required

Finishes	SKU
Brushed Satin	40-MOD-SS
Polished Chrome	40-MOD-PS
Smooth Ivory	40-MOD-I
Smooth White	40-MOD-W



Bend 30 Degree

- 30-degree bend
- Fits between two tubes
- No screws required

Finishes	SKU
Brushed Satin	30-MOD-SS
Polished Chrome	30-MOD-PS
Smooth Ivory	30-MOD-I
Smooth White	30-MOD-W

Diameter Ø32mm



Finishes



*Black satin is only available for selected products.

Straight & Tee Section Joiners



Straight Joiner - Underslung

- Straight joining piece
- Underslung support
- Round flange cover
- Five-hole fixing
- Concealed appearance

Finishes	SKU
Brushed Satin	SJ-MOD-SS
Polished Chrome	SJ-MOD-PS
Smooth White	SJ-MOD-I



Straight Joiner

- Straight joining piece
- Fits between two tubes
- No screws required

Finishes	SKU
Brushed Satin	SJ-SS
Polished Chrome	SJ-PS
Smooth Ivory	SJ-I
Smooth White	SJ-W



Tee Section - Underslung

- In house design
- T joining piece
- Round flange cover
- Five-hole fixing
- Concealed appearance

Finishes	SKU
Brushed Satin	TU-MOD-SS
Polished Chrome	TU-MOD-PS
Smooth Ivory	TU-MOD-I
Smooth White	TU-MOD-W

Diameter Ø32mm



Finishes



*Black satin is only available for selected products.

Hand Rail Supports



Modular Hand Rail
Support – Curved Cradle

- Cupped design
- Round flange cover
- Five-hole fixing
- Concealed appearance
- 19mm diameter
- 73mm center-to-wall

Finishes	SKU
Brushed Satin	HRS-SS
Polished Chrome	HRS-PS
Smooth Ivory	HRS-I
Smooth White	HRS-W
Black Satin	HRS-BS



Timber Hand Rail
Support – Curved Cradle

- Cupped design
- For round base timber handrails
- Round flange cover
- Five-hole fixing
- Concealed appearance
- 19mm diameter
- 80mm center-to-wall

Finishes	SKU
Brushed Satin	80HRSC-SS
Polished Chrome	80HRSC-PS



Timber Hand Rail
Support – Flat Cradle

- Flat support design
- For flat base timber handrails
- Round flange cover
- Five-hole fixing
- Concealed appearance
- 19mm diameter
- 80mm center-to-wall

Finishes	SKU
Brushed Satin	80HRSF-SS
Polished Chrome	80HRSF-PS

Underslung Sliding Bracket



Underslung Sliding Bracket

- Smooth bevelled edges
- Allen key front fit securing
- Round flange cover
- Five-hole fixing
- Concealed appearance
- 32mm diameter

Finishes	SKU
Brushed Satin	UB-MOD-SS
Polished Chrome	UB-MOD-PS



Sliding Inline Support Bracket

- Smooth bevelled edges
- Allen key front fit securing
- Top rail fitting system
- Two-hole fixing
- 32mm diameter

Finishes	SKU
Brushed Satin	J-MOD-SS
Polished Chrome	J-MOD-PS



Finishes



*Black satin is only available for selected products.

Other Modular Parts



4 Degree Bend

- Joining piece
- Fits between two tubes
- No screws required
- Suitable for 1:14 rampst

FinishBrushed Satin

Length & DiameterSKU

500mm x Ø32mm	ERR4DB
---------------	--------



Return End

- 180-degree return
- For stair rail or ramps
- No screws required

FinishBrushed Satin

Length & DiameterSKU

600mm x Ø32mm	RE600
1500mm x Ø32mm	RE1500
2000mm x Ø32mm	RE2000



90 Degree Bend Tube

Finish	SKU
Brushed Satin	90DB32

Accessories To Suit 32mm Rails



Adjustable Toilet Roll Holder to Suit 32mm Rail

- To suit 32mm grab rail
- Polished chrome finish

SKUATR32



1428.1 Sliding Shower Bracket

- To suit 32mm grab rail
- Brushed satin finish
- Suitable for use with hand showers

SKUSP-RS



Adjustable Sliding Bracket for 32mm Rails

- To suit 32mm grab rail
- ADA compliant design
- Suitable for use with hand showers

Size	SKU
138 x 100mm	SP-SBADA



304
STAINLESS STEEL

NCC
COMPLIANT

150KG
LOAD CAPACITY

Finishes



Brushed Satin



Polished Chrome



Smooth Ivory



Smooth White



Black Satin*

*Black satin is only available for selected products.

Modular Tubes



Modular Tube – Brushed Satin

Length & Diameter	SKU
1000 x Ø32mm	SS1MP
2000 x Ø32mm	SS2MP
3000 x Ø32mm	SS3MP



Modular Tube – Polished Chrome

Length & Diameter	SKU
1000 x Ø32mm	PS1MP
2000 x Ø32mm	PS2MP
3000 x Ø32mm	PS3MP



Modular Tube – Knurled Satin

Length & Diameter	SKU
1000 x Ø32mm	KS1MP
2000 x Ø32mm	KS2MP



Modular Tube – Peened (Firm Grip)

Length & Diameter	SKU
1000 x Ø32mm	FS1MP
2000 x Ø32mm	FS2MP



Modular Tube – Smooth Ivory

Length & Diameter	SKU
1000 x Ø32mm	IS1MP
2000 x Ø32mm	IS2MP



Modular Tube – Smooth White

Length & Diameter	SKU
1000 x Ø32mm	WS1MP
2000 x Ø32mm	WS2MP



Modular Tube – Ripple Ivory

Length & Diameter	SKU
1000 x Ø32mm	IR1MP
2000 x Ø32mm	IR2MP



Modular Tube – Ripple White

Length & Diameter	SKU
1000 x Ø32mm	WR1MP
2000 x Ø32mm	WR2MP



Modular Tube – Black Satin

Length & Diameter	SKU
1000 x Ø32mm	BS1MP
2000 x Ø32mm	BS2MP



Tube Thickness 0.9mm

Finishes



Brushed Satin



Polished Chrome



Smooth Ivory



Smooth White



Black Satin*

*Black satin is only available for selected products.

Modular Towel Grab Rail



Combination Elbow End – Towel Rail

- Towel rail component
- Round flange cover
- Five-hole fixing
- Concealed appearance
- Packaged as a pair

Finishes	SKU
Brushed Satin	EET-MOD-SS
Polished Chrome	EET-MOD-PS
Smooth Ivory	EET-MOD-I
Smooth White	EET-MOD-W



Modular Towel Rail Tube

- 19mm diameter
- 1.2mm tube thickness

Length & Diameter 1000 x Ø19mm

Finishes	SKU
Brushed Satin	TRPIPE-MOD-SS
Polished Chrome	TRPIPE-MOD-PS
Smooth Ivory	TRPIPE-MOD-I
Smooth White	TRPIPE-MOD-W

Accessories



Plastic Tube End Cap

- To suit 32mm modular tubes
- Black plastic end cap

SKU AP32



Modular Stainless Rings

- Dress rings
- Fits modular components

Finishes	SKU
Brushed Satin	MRSS
Polished Chrome	MRPS
Smooth Ivory	MRI
Smooth White	MRW
Black Satin	MRBS



Finishes



Brushed Satin



Polished Chrome



Smooth Ivory



Smooth White



Black Satin*

*Black satin is only available for selected products.

Compliance

These products should be installed as specified by AS1428.1. They are designed to safely support people requiring assistance to a minimum force of 1100 N, as per this standard.

Tools Required

- Stud finder
- Level
- Permanent marker
- Pop rivet gun
- Drill hardware
- Appropriate PPE
- Cordless drill driver

Step 1

Measure and plan your modular rail configuration and layout.

Step 2

Measure the length of completed rail required, minus elbow ends length* and cut the tube accordingly.

Step 3

Mark out your fixing holes with your permanent marker, using your level for horizontal/vertical alignment.

Step 4

Apply silicone inside the tube to ensure a secure and sealed connection.

Step 5

Insert the tube into the intended modular parts and connect them together. Wipe off any excess silicone.

Step 6

Use appropriate drill to drill the marked holes on the surface.

Step 7

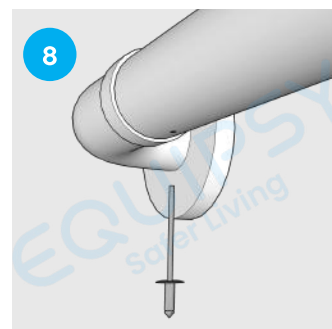
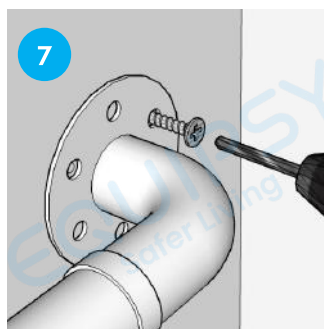
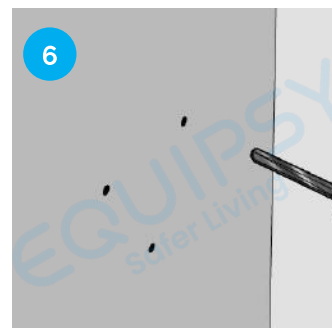
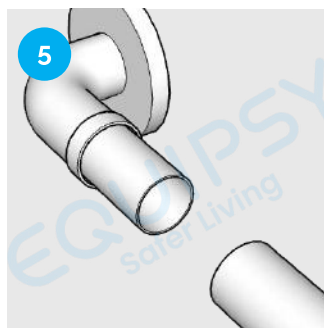
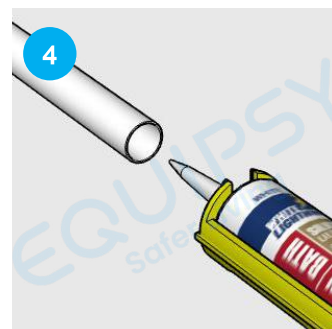
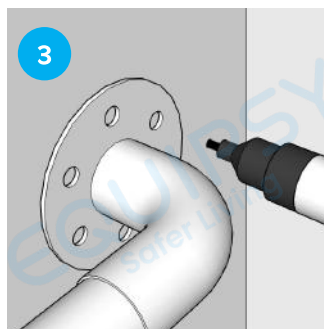
Position the assembled rails, aligning the flange holes with the drilled holes on the surface. Drill the screws into the holes to secure the grab rail into place.

Step 8

Drill a hole through the rail at the bottom of the junctions of the modular parts (30mm from the ring) then secure the connection using a pop rivet to ensure a firm hold. One rivet is required for each length of tube.

Step 9

Slide the cover plates over the flanges. Twist and lock into place.



*Elbow ends length differs according to where the rails are installed.

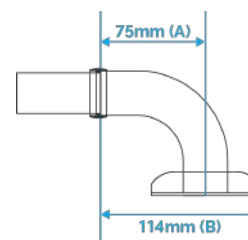
For modular ends installed to the middle of the wall, measure length A (from the centre of the flange to centre of the ring).

For modular ends installed to the edge of the wall, measure length B (from the end of the flange to the centre of the ring).

A = To the centre of timber studs

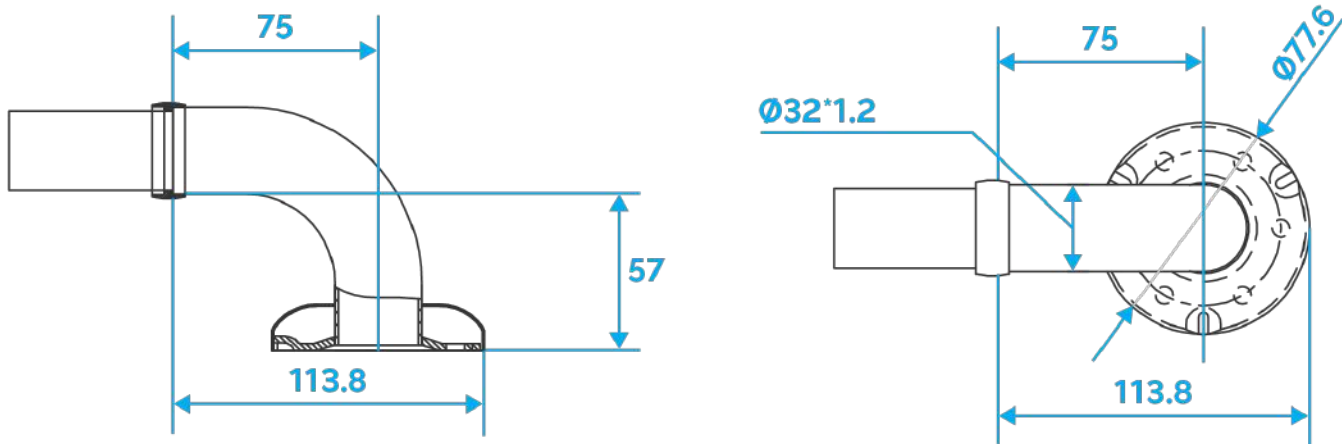
B = To the edge of the timber studs

Standard Size

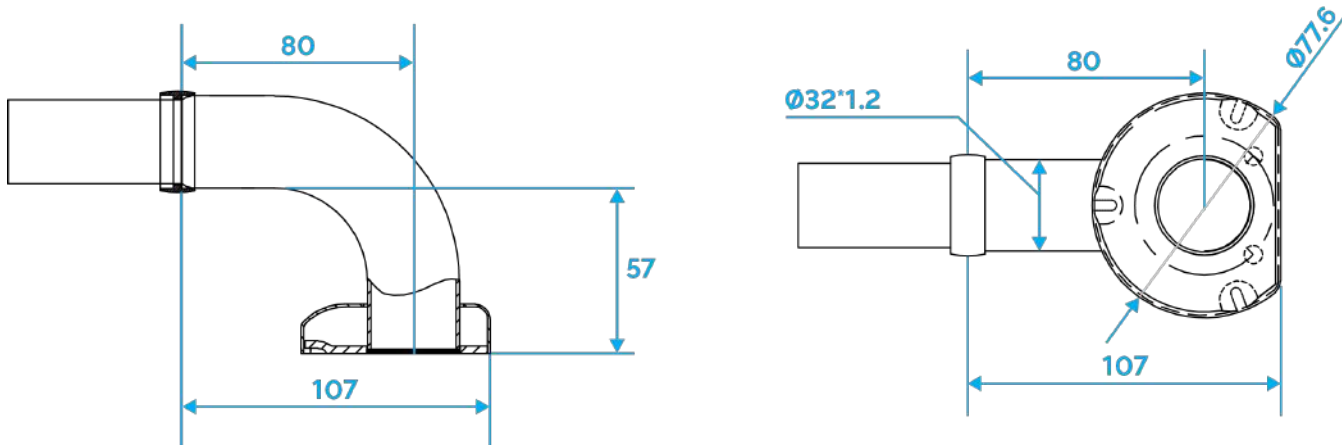


The information provided in this document is general in nature and should not be used as a substitute for expert advice in specific applications. All Equipsy products must be installed by qualified tradespeople. Equipsy is not responsible for any damage to products, walls, or fixtures resulting from improper installation or maintenance.

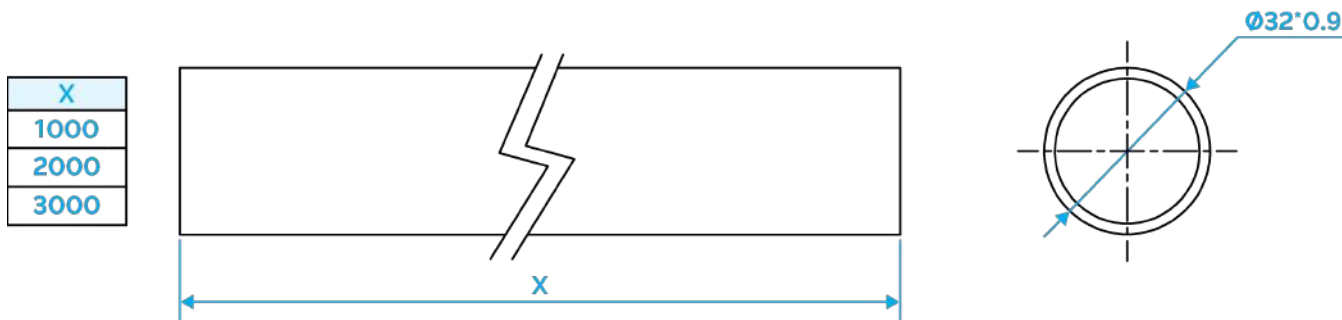
Standard Elbow Ends



Corner Elbow Ends

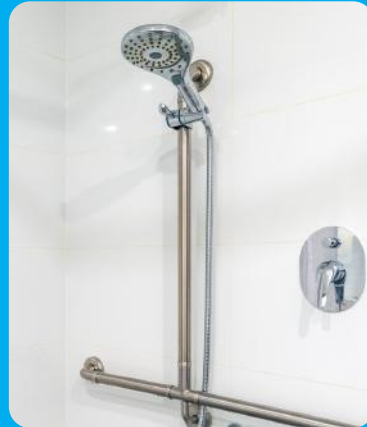


Modular Tubes



EQUIPSY

Safer Living



A family
owned
Australian
business

In Partnership with
Occupational
Therapy AUSTRALIA



ACCESS OUR
WEBSITE:



 (03) 9087 2199  sales@equipsy.com.au

 49a Quinn St, Preston VIC 3072  www.equipsy.com.au