

PLANTATIONS INTERNATIONAL

*Chom Beung,  
Ratchaburi*



# *The Idea*

We were actively searching for available land in the Kanchanaburi area when our respected Plantations Manager, "Bon," informed us about a plantation opportunity in Ratchaburi. The owner, whom Bon had a long-standing relationship with, was seeking someone to take over their property. Immediately, we consulted maps to pinpoint the plantation's location. Discovering that it boasted 3,000 Mango trees of various ages, our interest was piqued. Without hesitation, we prepared to embark on this promising venture, gassing the car, we were on our way...



# The Location

Ratchaburi is a lovely area for agriculture. Approximately 2 hours drive from Bangkok the plantation is located in Chom Beung. The capital of the province is Ratchaburi City which is 30 minute drive from Chom Beung.

At the west side of the province is the country border with Myanmar. There are a number of Mango growers here including

Mr. Ratchen “The Mango King” who we sourced our Siracha mango trees from and which are growing nicely! When it rains in Ratchaburi it tends to linger which is great for the trees and ponds we have there.



# Plan of Action

Up to 2023 the plantation has been primarily used for “In Season” Mango harvesting. Our plan was for “**Off Season**” **harvesting** which meant that we would have to give the trees a little more love and conditioning to get them ready for the “Off Season” harvesting, late August to late January.





Initially, there would be heavy pruning of both the **5 and 10 year old trees**, irrigation pipes were input all over the plantation at the same time whilst the trees received a welcome boost from quite a lot of fertilizer with most of it being the organic natural type.

We planted a further 1,500 new **Mango Nam Dok Mai** saplings as well which are now starting to look more like trees after 8 months of love and attention from our plantations staff at Chom Beung.

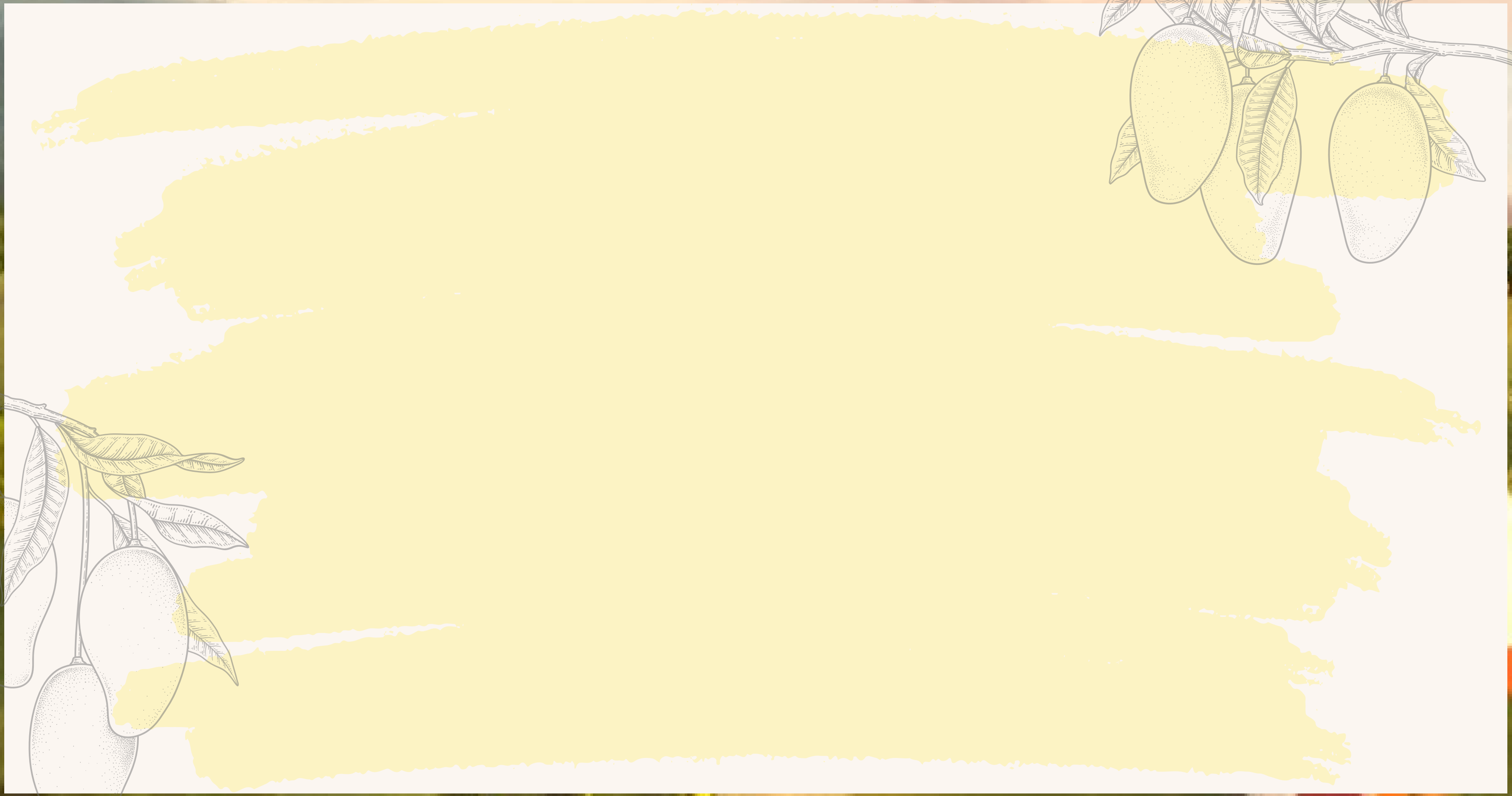
# Building Renovation & Wall Painting



There were a number of buildings at the plantation and it took a little planning to try and make the most of them without having to build anything else there. The main client room was a full renovation, organised by the Admin Team in Bangkok. The client room and outside area looked marvelous when the team had finished with it and along the way we managed to meet some art students from the **Silpakorn University Sanam Chandra Palace Campus** in Nakhon Pathom which is an hour drive from our plantation.

The students sent the Admin Team a draft picture of what they would create on the wall in the client room and we were delighted with the outcome. Please see the video, the students painted most of the weekend and completed the job ahead of time.





# Trees Growing & Info

Over the past few years our plantations manager and the plantations staff has been developing a special fertilizer for our trees. This fertilizer is a **fish fermentation** fertilizer and has helped the trees in the most natural of ways.

The chemical room in Chom Beung has now been completed enabling us to get ready for the certification of Global and Local GAP which are industry standard regulations for selling fruits.







# *Fully Planted Plantation*

By **mid-December 2023** we had planted all the available areas at Chom Beung. The plantation was now fully planted and the final parts of the irrigation would be input in January 2024. The timing of this was ideal and the plantation staff could focus on nurturing the trees and preparing for a harvest for 100 of the 10 year old trees during March, 2024.



# Chom Bueng

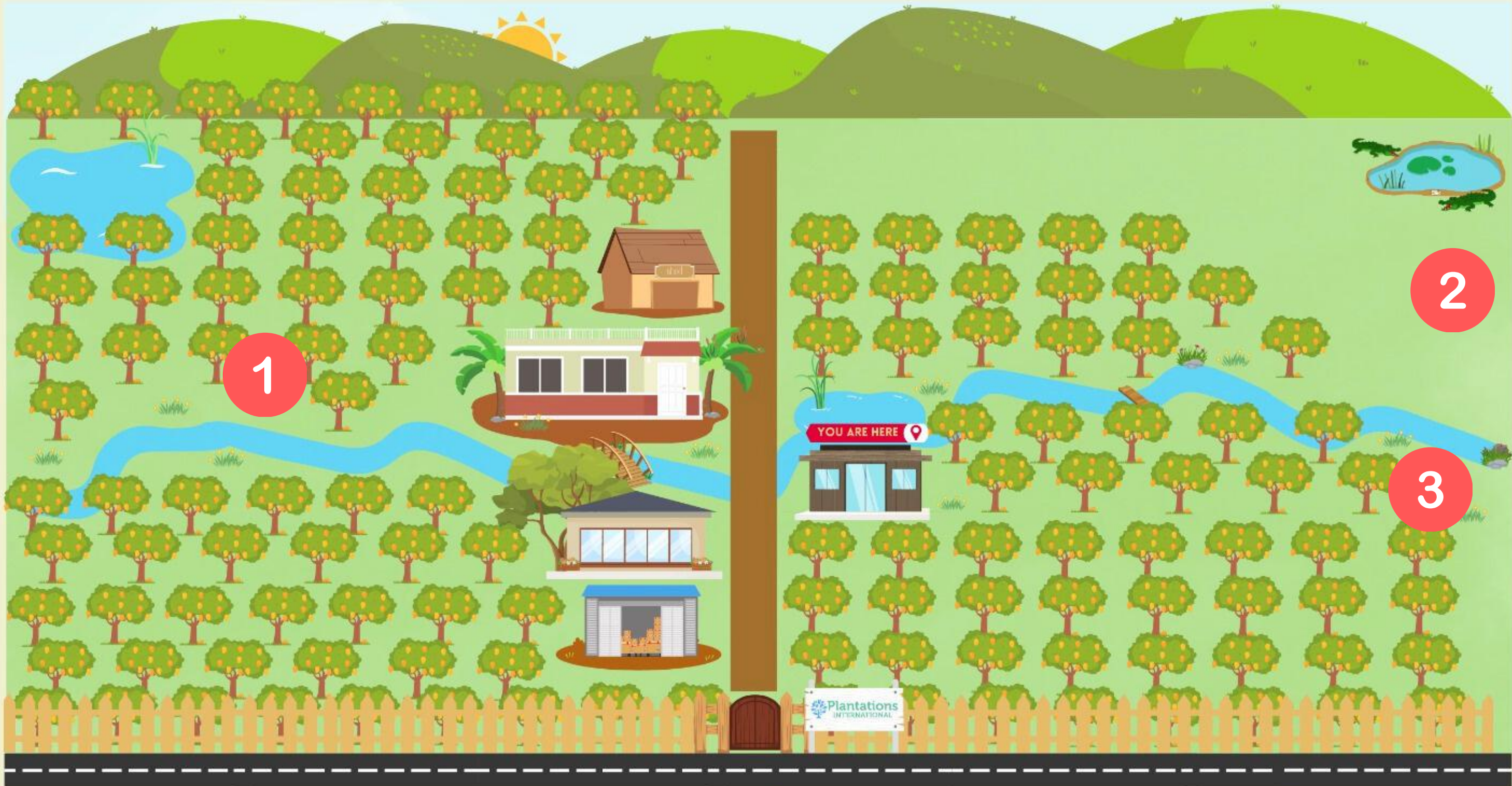


# Ratchaburi



P  
L  
A  
N  
T  
A  
T  
I  
O  
N  
S

I  
N  
T  
E  
R  
N  
A  
T  
I  
O  
N  
A  
L



# *Map of the Plantation*

Miss Jah from the admin team in Bangkok was the map designer and after a couple of practice attempts, the 3rd go was perfect. We were so pleased with this that we made a rather large map and put it on double floor to ceiling windows at the plantation for all our guests to review before heading around the plantation.



# *Drone*

Enjoy the trip around our Chom Beung plantation in Ratchaburi!



# *Uninvited Guests*

During our first year here in Chom Beung we have had some rather uninvited guests appear. So far this list is a Boa snake, monitor lizards and an alligator.

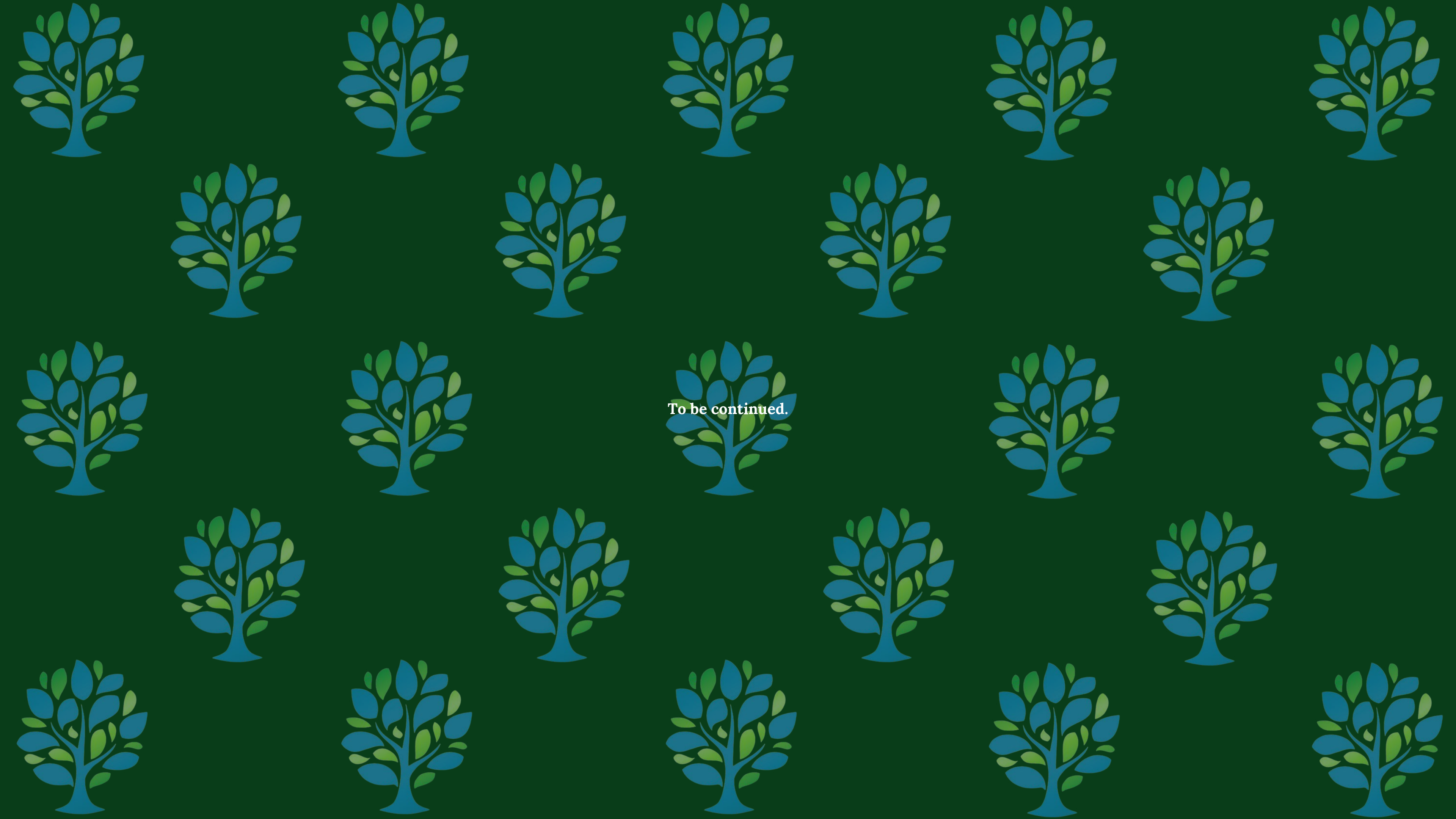
Year 2 should be interesting!!!



# ***Fruiting Trees***

**100 trees are fruiting soon, we will add  
the pictures in the very near future.**





To be continued.