

THE
VISION
IS PEOPLE & PRAISE

Building Strong and Sending Well



OUR MISSION

**TO LEAD PEOPLE
TO DISCOVER FULLNESS OF LIFE
BY HELPING THEM
FIND & FOLLOW
JESUS**

OUR VISION

**TO BE A LOCAL CHURCH WITH A
GLOBAL REACH,**

**MULTIPLYING AND
STRENGTHENING CHURCHES**

**BY RAISING LEADERS, RELEASING
MISSIONARIES, AND RESOURCING
PIONEERING.**

THE HEART

Apart from Jesus, it is likely I'd be a third generation alcoholic - following the pattern of the generations before me. I'd be living with all the brokenness that comes out of that, and perpetuating it. It would be a story of life 'stolen', 'killed' and 'destroyed' from the outset.

But that is not my story - it is one of redemption! I am learning to live more and more in the 'fullness of life' that Jesus promised. An abundant life that is not based on the abundance of things, popularity, power or prestige. An abundant life in and through every circumstance - trials and the terrific moments. A life that is like a wellspring of water welling up inside, that never leaves you thirsty.

This is what Jesus promises for his followers, and which I have 'tasted and seen'...and long for others to come to know for themselves. This 'fullness of life' comes from finding and following Jesus - living in the good of his rule and reign. Jesus said that when you find this life (Him), this 'kingdom', you realise how precious it is. It is like treasure found in a field that, in your joy, you go and sell everything you have, and buy that field (Matt 13v44). As John Piper puts it "Having the omnipotent, saving reign of Christ in our lives is so valuable that, if we lose everything, in order to have it, it is a joyful sacrifice". It is so precious that the only suitable response is to be all-in.

At the centre of God's kingdom purposes on the earth is The Church. We read in Ephesians 3v10 that God's purpose is that 'through the church, the manifold wisdom of God should be made known to the rulers and authorities in the heavenly realms, according to the eternal purpose that He accomplished in Christ Jesus our Lord.

It is through the church that Christ is uniquely displayed. The Church is His Body, His Bride, His Army, His Household ... and more. It is in the church we find our 'eternal family'. It is through the church that we are equipped, protected and guided by anointed servant-leaders. It is through the church that we are encouraged, built up and strengthened. There are many amazing organisations making a huge difference in the world, but there is nothing like the local church!

We have always carried a prophetic call to plant churches and look beyond our borders. From our earliest days, the prophetic chorus has been about pioneering and planting - including into the nations of the world. There are many good things a local church should give itself to, but trusted and repeated prophetic words give us a lane to run in. We are compelled to multiply churches.

This is our beating heart - planting churches to display the manifold wisdom of God as many people come to find and follow Jesus into fullness of life.

We believe Redeemer is to be a base church that raises leaders, releases pioneers and resources this mission. To do this fruitfully, we need to build strong and send well.

**This is your invitation to be part of the story.
Will you join us and be all-in?**

A handwritten signature in white ink that reads "Hugh". The signature is written in a cursive, flowing style with a long horizontal stroke at the end.



B.L.E.S.S



Build Strong

Leaders Raised

Evangelistic Advance

Serving Initiatives

Starting & Sending

*I will **ble**ss you and make you famous, and you will
be a **ble**ssing to others.*

Genesis 12:2



B.L.E.S.S



Redeemer's vision is to 'be a **growing** local church with a **global** reach, multiplying and strengthening churches by **raising** leaders, **releasing** missionaries and **resourcing** pioneering.'



To keep us in the 'right lanes' we have summarised our journey forwards with the acronym B.L.E.S.S - reflecting our focus on Building Strong through seeing Leaders raised and released, Serving initiatives to bless our communities, Starting sites and church plants as well as Sending leaders to strengthen other situations, all for Evangelistic advance.



FIND OUT MORE AT

redeemerchurchcolchester.org/bless

PROPHETIC WORDS

...it's in your DNA to raise up leaders within the house, as well as deployed beyond. I felt like there's this multiplication of leadership - that it's going to not just be within the church, but going to go over the wall.

The church (is) going to be a county church (like a county town). It'll be something regional. Plough the county.

As you go to Colchester there is going to be a big break out that will have a knock on to Asia.

I see high calibre troops coming out, I see specialist skills. In armies you have elite groups that protect the president ... I see there being high calibre troops emerging from Colchester in the years to come.



5 CHURCH PLANTS
STARTED AND SUPPORTED

5

2015



REDEEMER
CHURCH COLCHESTER

2023



Plant Nijmegen



CHELMSFORD
CHURCH PLANT

2024



SANCTUARY
CHURCH SAN FRANCISCO



RIVER
CHURCH BATH

...

**CELEBRATE WHAT GOD
HAS DONE**





WHAT'S NEXT?

Whilst always being open to new things and responding as God leads individuals, we are passionate about making an impact in our county - Essex.

Essex is one of the fastest-growing areas in the UK, with a population of 2 million people. Only something like 3% are engaged with a church, leaving many others not having even heard the gospel let alone experienced vibrant, healthy church life.

Just to keep up with these stats we'd need to plant numerous churches in the coming years - but our heart is to increase this % not just maintain it!

The work ahead of us is overwhelming when we look at the size of the crowds and the resources we have, but we sense Jesus saying 'You feed them!'. This is what he said to his disciples as thousands gathered to listen to him - it was getting late and his disciples said 'Send the crowds away so they can go to the villages and buy food for themselves.' Jesus' response? He turned to his disciples and said; "That isn't necessary - you feed them." (Mtt 14v15). He then showed them how - by using what they had, and 'looking to heaven' (v19). The result? The crowds were satisfied and there were leftovers.

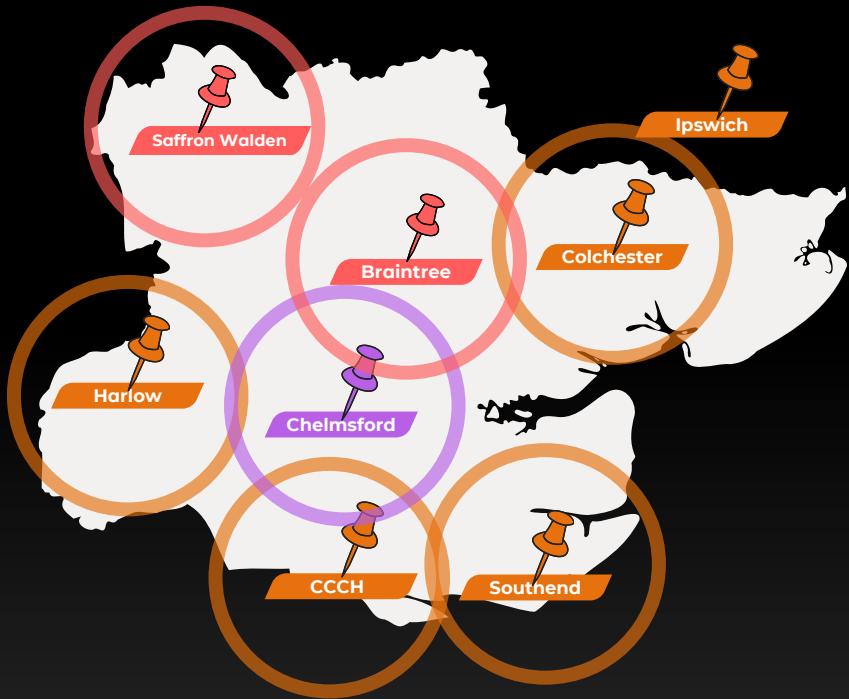
We labour with what we have and look to heaven in faith and dependence. God has abundant resources - we need to step out in faith.

And so, in faith, as a first step, we long for everyone in Essex, to be within 30 minutes of a Word and Spirit Community on Mission (A Relational Mission Church) by 2030.

We are calling this our Essex 30:30 vision.

ESSEX 30:30

Everyone in Essex within 30 minutes of
a Word & Spirit Community on Mission



Established Church



Existing Plant



Key Location

Pioneers needed



Resources needed

BUILDING STRONG

ESTABLISHING A BASE

Our prophetic words have compelled us to look beyond our immediate borders - to be caught up in God's global plan. Clearly the 'local' place God has put us is also part of his purpose for us, this is a given! We love Colchester and the surrounding area, and long to make an impact and be a blessing.

To do that, and to outwork our wider mission, **we dream of having a base that roots us in the city and resources our mission.**

We dream of a space we can call home. A space we rejoice and worship in. A space we call upon heaven and pray in. A space to welcome and serve others in. A space to raise the next generation in. A space to Dream with us!

To establish such a base takes many things,
particularly faith and finance!

To this end, we have stewarded and saved - and will continue to do so. Your generosity through Tithes and Special Offerings means we have been able to serve (through our ongoing, day-to-day mission), and to save (positioning ourselves to grasp opportunities as they come up or we are led to pursue). We will keep doing this, stretching our faith and sowing into our dreams.

Our GIFT DAYS fund is set aside to build up a resource pot towards our dreams of advancing the gospel, including buying premises for that purpose. We will continue to sow into this fund through special GIFT DAYS in faith and expectation...what might God do?!

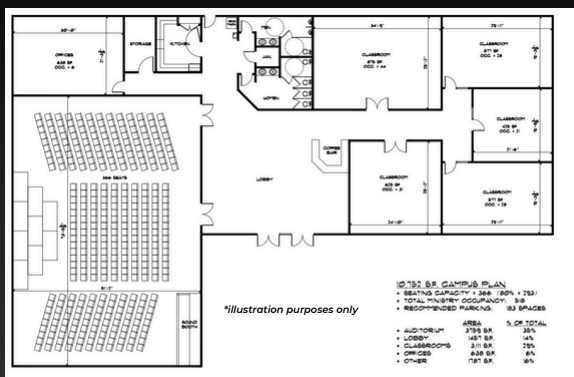
DREAM WITH US

**Belle-Vue Social Club
2016-'18**



**St. John's Green School
2018-'22**

**St. Benedict's College
2022 - '??**



DREAMING TOGETHER

PLAYING YOUR PART IN THIS TOGETHER

GIVING

We believe we can do more together than apart - never underestimate your contribution. When faced with thousands to feed, Jesus' disciples wanted to send them away to find their own food. Jesus however, turned to his disciples and told them to feed the thousands - crazy! Jesus then showed them how - by taking a packed lunch and, looking to heaven, he blessed it and fed the thousands (there were even leftovers).

A little, sown in faith and by 'looking to heaven' can bless thousands. You might feel like all you can offer is a packed lunch - do it in faith, then watch and see what the Lord does.

We will be receiving a special offering at various times in the year. **We would love you to pray about what you can give and, in faith and trust,** give as you are led. There is also the option to make a pledge over a period of time.

PRAYING

PRAYER MAKES ALL THE DIFFERENCE. IT IS POWERFUL AND EFFECTIVE. WILL YOU COMMIT TO PRAYING INTO OUR FUTURE, ESPECIALLY OUR DREAMS FOR A BUILDING TO CALL HOME?

GIVING

Online via Bank Transfer:

Redeemer Church Colchester

Account no: 00028965

Sort code: 40-52-40

Reference: **Gift Days**

Through our website:

redeemerchurchcolchester.org/give

*use the 'Gift Days' fund.



For any giving questions email us at
info@redeemerchurchcolchester.org

**NOW TO HIM WHO IS ABLE TO
DO IMMEASURABLY MORE THAN
ALL WE ASK OR IMAGINE,**

**ACCORDING TO HIS POWER
THAT IS AT WORK WITHIN US,**

**TO HIM BE GLORY IN THE
CHURCH AND IN CHRIST JESUS**

**THROUGHOUT ALL
GENERATIONS, FOR EVER AND
EVER!**

AMEN.

EPHESIANS 3:20-21



redeemerchurchcolchester.org