

Winchelsea Star

Price \$1



Your Weekly Community Newspaper

Since 1977

Vol 47 Ed 31

Tuesday 13 August 2024

winchelseastar.org.au

Local Support Helps Winchelsea Foodbank to Thrive

Now in its second month of operation, Winchelsea Community Foodbank is growing and thriving - thanks to local people with big hearts and generous spirits.
Page 6

PLUS

Winchelsea Kyokushin at the Nationals, Page 2



PLUS

John Davis' 50 years service, Page 8



Winchelsea Kyokushin at the Nationals

by Sempai's Michael & Jess Winn, Winchelsea Dojo

On Sunday the 4th of August, Winchelsea Kyokushin sent 9 students up to Sydney as part of the Victorian Team competing at the National Kyokushin Karate Championships. Results were:

No Contact:

- Rune D'Agostino (1st)
- Raina D'Agostino (1st)
- Charlie Wilson (1st)
- Summah Wilson (2nd)

Ava Woodford & Cooper Paterson also competed but just missed out on getting a place.

Padded Contact:

- Raina D'Agostino (1st) *double Champ!
- Rune D'Agostino (3rd)
- Summah Wilson (3rd)

Ava Woodford again missed out on a medal but should be proud of her first Nationals as she was the youngest (& smallest) in her division, as did Ollie Winn who lost a really close fight with the judges split 2 flags each and the referee siding against Ollie. Ollie just keeps getting better with every tournament, it won't be long until he gets that win he has been looking for.

Full Contact:

- Sempai Michael Winn (2nd)
- Charlie Wilson (2nd)
- Johanna Muller (2nd)
- Cooper Paterson (3rd)

Charlie's first go in the Open division and she didn't look out of place at all. Ended up in the final against a much more experienced fighter and lost on decision, but will be better for the experience.

Johanna got a bad leg injury in her fight but battled through to get to the final, however the leg was too banged up for Jo to continue. 2nd place for Jo at her first Nationals, unreal effort!

Cooper fought a much more experienced and heavier opponent, losing after some heavy low kicks. Cooper should be proud though as it takes a lot of courage to get up and compete at National level.





Sempai Michael fought another blackbelt from NSW in his first fight beating him on decision which got Michael straight to the final. There, unfortunately, Michael copped a strong knee to ribs which stopped him. This was Sempai's first Nationals since 2011, and he came home with 2nd place.

Very proud of Team Winch, on and off the Mat, the team stuck together and supported each other. Was unreal to be a part of.

Thank you to our awesome coach Sempai Jess who didn't miss any fights and helped organise everyone and made sure we were all ready to go.

A big thank you to our sponsors, Bakerland Developments, One Body Chiropractic and Impact Teamwear! Without their help, our team wouldn't be able to represent our small country town at National level.



Photography- Artificial Lighting

by Kathryn Hartley

As part of my photographic subject we were asked to set up a camera on a tripod with slow speed film and Still Life objects.

I selected a dark corner of my lounge room for this purpose. I then set up my spotlight to light up the corner of a room. I waited until it was dark outside so that it didn't interfere with my subjects

I chose my doll and part of a flokati rug and rocking chair, bringing textures and depth to my subjects

The rug brought different shades and textures to the foreground, the chair brought strong darks and smooth texture to the background areas to complement the rug and doll; the doll was highlighted using a background spotlight which cast shadows across the photograph

I used Ilford black & white film of ASA 200 speed film; I slowed the shutter speed down to F4 for 4 seconds.

I tried this exercise with other things in my home however I feel this was one of my best results.

The photograph was developed by myself in the school darkroom



VOTE TONY PHELPS

for
Winchelsea Ward

Focus on what matters

- * Better unsealed roads
- * Community asset upkeep
- * Mental health initiatives

tonyphelps.com



SIMCO
PLUMBING SERVICE

Domestic - Commercial - Rural

0400 643 976

- All general Plumbing and Gasfitting • Water tanks and Pumps
- Renovations and Extensions • Hot water and Heat pump
- Split system and Wood heaters • Roof and Gutter
- Septic and Treatment plants • Excavation, Bobcat and Tipper
- Driveways and Earthworks
- Blocked drains and CCTV Inspection

Simon McGillivray

Lic: 109610 Free Quotes, Fast & Friendly Service

WANT TO JOIN PROBUS?

Enjoy fellowship with other members

Enjoy trips & outings

Listen to guest speakers



Contact Lorraine
0417 467 927



parkrun 23

6 July 2024

Trebeck Reserve, Winchelsea

10th August 2024

This week we welcomed 3 first time parkrunners. 27 participants completed the course through Trebeck Reserve. Congratulations to Dale Atwell, Russell Johnson, Nathan F, John Greenslade and Murray Aisbett who completed their personal best time for Trebeck Reserve. We had visitors from Mernda, Dandenong, Lilydale, Lake Wallace, Kenning Reservoir, Balyang Sanctuary, Point Cook, Eastern Gardens, Jells Park and Portland. Well done everyone who walked, ran or volunteered.



This event was made possible by the following volunteers : Rob McDonald * Murray Aisbett * Neil McInnes * Ann Morsby * Helen Woodall * Russell Johnson * Liz Bennett * David Woodall *

A summary of this week's results can be found at trebeckreserveparkrun.com.au/results

Please check out our Facebook page for today's photos and further information.

It takes a minimum of six people each week to safely conduct an event. Please email trebeckreserve@parkrun.com if you are able to volunteer some of your time. Tasks are simple, sociable, fun and very much appreciated.

If you wish to join us any Saturday morning as a walker, runner or volunteer please complete the simple online registration at parkrun.com.au/register. This only needs to be done once and can be used worldwide.

Well behaved dogs on a short hand held leash are welcome (no waist harnesses please)

parkrun was conducted at 495 locations across Australia this week.



Winchelsea Foodbank Thriving

(from front page)

Since opening its doors to the public in June, residents from as far as Moriac and Deans Marsh have been benefitting from a boost in fresh veggies and household staples, donated by locals.

Winchelsea and surrounding businesses, together with community members, have supplied the foodbank with all kinds of donations, including shelving, a refrigerator, home-grown produce, canned goods and long-life milk.

“These generous donations from our community help ensure that no one has to come home to an empty fridge or pantry,” Hesse’s Health Promotion Officer, Hannah Walker said.

The Winchelsea Community Foodbank in an initiative of Hesse Rural Health and Winchelsea Community House with no eligibility requirements. It is open weekly, providing a range fresh fruit, vegetables, bread, milk and pantry staples.

“We are committed to delivering quality healthcare and community services to country people and Winchelsea Community Foodbank is another way we help support individuals and families living in this part of the world,” Ms Walker said.

“The foodbank feeds close to 90 people per week and is distributing over 300kg of food and household items to our

community. If you have excess veggies or additional pantry staples, we will gladly accept your donations.”



Healthy spine, Healthier life



Dr Joel Grist
B.App.Sci.(Clin.Sci), B.Chiro.Sci

Ph (03) 5231 5594

50 Murray St, Colac, 3250
www.colacchiro.com



Scott McDonald
0423 413 829



S.J.R AUTOMOTIVE
ABN 852 483 648 39
13 ALSCOR DRIVE, WINCHELSEA VIC 3841

eldersrealestate.com.au

Elders

You're in Safe Hands With Peter Lindeman *Delivering Exceptional Results for Over 20 Years*

If you're thinking of selling a Rural or Lifestyle acreage property on the Bellarine, the Greater Geelong region or beyond then think Peter Lindeman.

Peter spent 20 years managing farms before jumping the fence to sell them; and over the last 23 years he's helped over 350 vendors achieve extraordinary results, more often than not surpassing their expectations. Why not let Peter show you how he can help you achieve an outstanding result for your property.

Peter Lindeman - 0418 525 609
RURAL AND LIFESTYLE SALES MANAGER - ELDERS GEELONG

E: peter.lindeman@elders.com.au

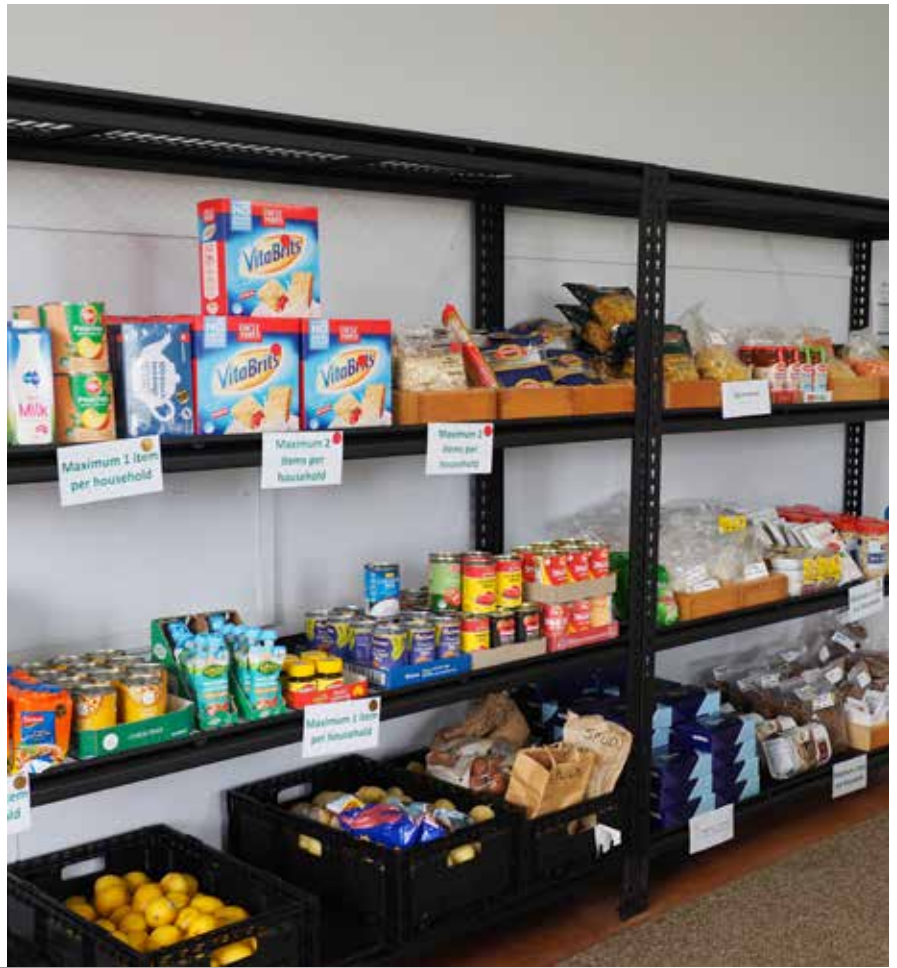


The Winchelsea Community Foodbank would once again like to thank the Geelong Community Foundation and the Give Where You Live Foundation for their support in making this initiative possible.

Donations can be dropped off to 30-32 Hesse Street every Friday between 9-10 or 12-2, or an agreed alternative arrangement made by contacting healthpromotion@hesse.vic.gov.au or 0417 848 292.

For more information on the Hesse Rural Health food bank, visit: hesseruralhealth.com.au/food-relief

For more about Hesse Rural Health and its services, visit: <https://hesseruralhealth.com.au/>



We'd love to see you!

WINCHELSEA PLAYGROUP

Each Thursday during school terms.
Come along between 10AM - 12PM.

Check out our Facebook Page for more information about the happenings of each session.

Playgroup Leader - Danni Menzies
Email: winchelseaplaygroup@gmail.com
St. Thomas's Hall,
27-29 Barwon Terrace,
Winchelsea VIC 3241

\$5 PER FAMILY
INCLUDES MORNING TEA & HOT DRINKS FOR CAREGIVERS

Scan to be part of our Facebook Group

Stay Well - Feel Well - Age Well

Health Matters Road Show *for*

Womens Health Week

Your Health Matters! GORH are here to help you improve and maintain a healthy lifestyle.

GORH Allied Health Team will be presenting:

- Nutrition guidance for **staying well and feeling well**
- Exercise tips to keep you **moving better**, for longer
- Guidance on **sleeping soundly and stressing less**

Cost: \$5
10am - 12noon
Morning tea provided

Date
Monday 9th September

Location
Deans March Community Hall

REGISTER OR EXPRESS INTEREST

 communityreception@gorh.vic.gov.au
(03) 5289 4360





John Davis 50 Years Service

John Davis recently achieved a remarkable milestone, marking 50 years of dedicated service at R.A.K. Davis & Sons Pty Ltd.

Congratulations John from the team!

His journey with the cartage business has been a testament to commitment and hard work. A small gathering of colleagues and family gathered recently to celebrate this significant achievement, honouring John's steadfast contributions to the company's success over the decades.

It was a heartfelt tribute to his unwavering dedication. There was lots of reminiscing and memories flowed freely about John's journey from his early days (see next page)



Free Prep Bag Books To Inspire Young Readers

The Government is making sure next year's Preppies get a great start to their education – giving every student starting at a government school a library bag full of fun and engaging story books.

Premier Jacinta Allan and Minister for Education Ben Carroll today visited Carlton Gardens Primary School to reveal the titles of next year's books – which will help around 65,000 students improve their reading skills at home.

To help build a love of reading and learning, each student will receive five specially chosen books:

A Crocodile in the Family – written by Kitty Black and illustrated by Daron Parton

Walk of the Whales – written and illustrated by Nick Bland

Bernie Thinks in Boxes – written by Jess Horn and illustrated by Zoe Bennett

Koala Ark – written and illustrated by Stephen Michael King

No Way Yirrikipayi! – by children from Milikapiti School, Melville Island, with Alison Lester

To make sure every young student can enjoy the stories, the books will also be produced in Braille, with tactile illustrations by the Statewide Vision Resource Centre – supporting students who are blind or have low vision.

Research has shown how important it is for parents and carers to regularly read aloud to young children, particularly as they prepare to move from kinder to primary school and adjust to the next important phase in their life.

By reading together, families can help kids to expand their vocabulary, make connections between spoken and written words, and strengthen the bond they share with their children.

Interested in becoming a councillor?



Surf Coast Shire Council is hosting a free information session for individuals who are considering running in the October 2024 Council election.

This session will be held at:

Council's Civic Office

1 Merrijig Drive, Torquay

6pm-8:30pm, Wednesday 4 September

This will be a combined session presented by Council and the Victorian Electoral Commission (VEC), with the agenda including:

- The VEC Election Manager will provide information on how to nominate as a candidate. Several processes have changed following the 2020 Council election, so prospective candidates are encouraged to attend even if they have attended sessions for previous elections.
- Council's CEO Robyn Seymour and members of the Executive Management Team will discuss the role of Council in the community including functions and priorities, and challenges facing Council during the next four years and beyond.
- Council officers will provide an overview of a councillor's conduct, integrity, and governance obligations, and information on recent legislative changes. Candidates will also be given information about the support that is available to councillors, an outline of the councillor induction process and time commitments.

To register for this session, visit surfcoast.vic.gov.au/Election2024 or scan the QR code.



In conversation with John Davis

by Judy Cameron

John Davis dreamed of being a driver as a boy. Perhaps an ambulance, maybe a fire truck, - appears it was in his DNA!

He got his tractor licence when he was 16 to help his share farmer / contractor father Russell Davis.

He joined his Uncle Keith (aka Bushy) at RAK Davis trucking business in April 1974 while still on his P plates. John's first job was driving a 5 gear, 120 horsepower AB International truck carting soil and clay from Little River to build the Little River overpass.



John had 4 bosses back then – Keith (Bushy) and his sons Raymond, Max and Geoffrey.

Trucks were underpowered and overloaded in those days and John describes the seats back then as like sitting on a spud box! There were no mobile phones and one had to carry 20 cent (or 2 shilling) pieces to use in the public phone boxes.

Davis's bought their first new 15-gear Kenworth T650 in 1988.

RAK Davis had the Winchelsea Shire work via tender.

There was plenty of work in the harvest seasons starting in Queensland then moving down into NSW then Victoria to move grain from farms to local silos. They also once carted grain from the Ouyen area to the Adelaide port and local silos - and there were many truck loads to the Geelong port from northern Victoria.

Other jobs over the years included moving ironstone out of the Steiglitz bush and gravel for

RAK DAVIS & SONS CARTAGE CONTRACTORS

the Bannockburn Shire roads and going to Wycheproof every summer when the Shire did road maintenance. John has taken aluminium to Brisbane, watermelons from Qld to SA, spuds to Brisbane and carted pig manure from Tooleybuc to farmers for fertiliser.

Once, during a drought year, they were called upon by a farmer up Ivanhoe way to cart grain to Balranald which had been grown in a dry lake bed.

John's reflections:

"Trucks are more pleasant to be in now with air-conditioning and much improved comfortable seats."


"I am concerned about the risk of being on the road now with drivers travelling too close to other vehicles. A fully loaded commercial truck needs at least twice the distance to stop than a normal passenger car. And from my height I see drivers on their phones – it is this inattention that leads to accidents."

"I do love my job with the variety in driving tippers, loaders and flat tops and doing maintenance inside the shed in the winter – and of course the workmates and the appreciative farmers."





Kyeema
Rural Fencing Pty. Ltd.
Jason Armstrong & Jay Hawker
1080 Prices Lane, Ombersley, Victoria 3241
0419 565085 (Jason)
0416 585817 (Jay)
kyeemafam@kyeemafam.com.au
Also incorporating domestic and rural tree trimming services.



mainly music
est. 1990

Fun, Interactive music sessions for pre-school children (0-4 y.o.) and parents/caregivers

When: Mondays from 10 to 11 am (runs during school terms)

Where: St Thomas' Hall
25 Barwon Tce.

To Enquire ring: 0407838256

CONCRETER
Alister Aitken

No job to big or small

- Driveways - Carports - Crossovers – Footpaths - Sheds Slabs - Colored Concrete – Concrete sealing - Exposed Aggregate – & more -

Call or text for a no obligation free quote

Servicing our local Winchelsea & Surrounding Areas

alaitken.aa@gmail.com or Alister - 0411 871 950

A.B.N 47 228 574 460



5234 6585 0417 385 984

For all your septic tank, grease traps and interceptor pits servicing.
Locally owned and operated

NO MATTER WHAT YOUR PROBLEM, DODDS ELECTRIX CAN DEFUSE THE SITUATION.

RURAL, INDUSTRIAL, COMMERCIAL DOMESTIC
PHONE 0438 887 360
EMAIL: DODDSY@FASTMAIL.FM
PO BOX 36 BIRREGURRA, VICTORIA 324
REC: 17520 ABN: 64 581 250 880

Knuckey's Winchelsea
Ph: 5267 2011

Knuckey's have in stock a complete range of batteries to suit tractor, heavy machinery, cars, utes

The largest range of the best oil for your vehicles—**CASTROL**—
'when only the best will do'

The largest range of V belts.
A, B, C, D M Sections
Bolts and nuts for all occasions
Steel cut to size

Winchelsea Star

send your stories
news@winchelseastar.org.au

LOCAL NEWS and ARTICLES WELCOME
Include name and address of the sender
Email news@winchelseastar.org.au
Leave hard copy at IGA Supermarket

DEADLINE 5pm Fridays
4pm Sundays - hard copy articles left at IGA
6pm Sundays - sports results and weekend events

ADVERTISING
advertising@winchelseastar.org.au 0408 102 802

free digital subscription
winchelseastar.org.au

FOLLOW US ONLINE
winchelseastar.org.au

FACEBOOK
facebook.com/TheWinchelseaStar

production

Editors: Cerrie Fogan, Yvonne Stevens, Judy Cameron
Advertising: Sasha Gauntlett, Neil McInnes
Design: Tony Phelps, Susan Corby
Printing: Winchelsea Community House
Website: winchelseastar.org.au

committee

President: president@winchelseastar.org.au
Neil McInnes

Treasurer: treasurer@winchelseastar.org.au
Cathy Cheadle

Secretary: secretary@winchelseastar.org.au
Tony Phelps

Members: Mick O'Mara, Linda Carter, Sasha Gauntlett, Judy Cameron, Yvonne Stevens, Cerrie Fogan

© Winchelsea Star Org. Inc. All rights reserved
Winchelsea Star Organisation Inc.
Reg. No. A0053999F ABN 75 941 529 279
winchelseastar.org.au PO Box 5 Winchelsea 3241
Views expressed are not necessarily those of the Winchelsea Star or its Committee.
The Winchelsea Star reserves the right to edit or not publish any article.



MEMBER 2023



Winchelsea Star COMMUNITY NOTICEBOARD

email editor@winchelseastar.org.au or
leave at Winchelsea IGA

OP SHOP AGM

The Hesse Op Shop Auxiliary Annual Meeting will be held on Monday 19th August, 2024 @ 2 p.m. at ADASS, 53 Hesse Street. Afternoon tea will follow.



Social Bridge is played

**EVERY TUESDAY
10.30 AM-1.00 PM**

**SENIOR CITIZENS CENTRE
36 Harding Street Winchelsea**

New players always welcome

Elaine Atkinson 0458 009 616

WINCHELSEA PICKLEBALL

Winchelsea Leisure Time Centre
(next to the Primary School)
Wed 7-830pm or Thurs 10-11.30am.
All equipment supplied,
wear suitable footwear.
Lesley Mathison 0438 672 197

WINCHELSEA GIRL GUIDES

Are you interested in joining an enthusiastic, self-motivated team working with girls, 5-15 years?

The Winchelsea Guides are seeking female adult volunteers.

We are losing our lovely Unit Helper Teresa, who is moving to Geelong, and to comply with adult child ratios we need more helpers.

Come and help us provide a stimulating program giving leadership development opportunities for girls, as well as providing fun and friendship.

You will need -

- Police Check clearance (provided by Guide Centre)
- Working with Children Check (free when working as a volunteer)

Phone Yvonne 0448 672630

Winchelsea Tennis Club

JUNIOR COACHING

Mondays from 3.30pm with experienced Nicole Mullen, \$10

SOCIAL TWILIGHT TENNIS

Monday evenings from 6.00pm.
All Welcome!



WINCHELSEA LIONS

Environmentally friendly compressed paper bricks for your fire. Save on the rising cost of wood. Pack 4 bricks \$5 - Roll small rolls \$2 Contact Alan 0476 475 422

FOR SALE

One large generator \$150
One small generator \$50
One large gazebo \$100
Items not used anymore
Phone Kaye 52672954

ROSES AT THE WINCHELSEA RAILWAY STATION

If you or someone you know is regarded as a "Rose Growing Guru" volunteers of the Station Precinct Project are seeking your advice, as we aim to upgrade the planter boxes on the platform.

With the grant from the Surf Coast Shire, a planter box prototype is in the making.

The rose bushes will be pruned, stored and replanted.

As we are aware the community holds these rose bushes close to their hearts, we seek to protect them as we enhance the platform.

If you know more about the story behind the roses we would love to hear that too.

Any advice is welcome.

Please contact secretary@growingwinchelsea.com



**Winchelsea
Community
Foodbank**
Fridays, 12 - 2PM
30-32 Hesse Street Winchelsea

Food relief for our community.

For more info, contact Hannah healthpromotion@hesse.vic.gov.au 0437 848 292

**Winchelsea
Community Market**
Shire Hall
9am - 1pm

FIRST SUNDAY OF THE MONTH

1 Sept 2024	6 January 2025
6 October 2024	3 February 2025
10 Nov 2024	3 March 2025
1 Dec 2024	7 April 2025
	5 May 2025
	2 June 2025

Snakes are out!

Photo & text by Judy Cameron

The unseasonably warm weather has confused the normally hibernating snakes and there have been sightings this week - including this handsome copperhead.



Come to the Winchelsea Singing Group!

When: Wednesday Afternoon 4.45pm -6pm

Where: Winchelsea Shire Hall Space

Cost: \$7.50 per session - Under 16 Free

Bookings: reception@winchouse.org.au

Winchelsea Star



**WINCHELSEA
GOLF CLUB**
45 Anderson Street
WinchelseaVIC3241
03 5267 2660

WINCHELSEA GOLF CLUB

THIS WEEK'S RESULTS

Women - Wednesday August 7 Stableford
Di Bartel (22) 35pts Elizabeth Alston (21)
34pts
NTP: Elizabeth Alston

Mens Midweek Comp - Stableford Stephen
Cole (14) 37pts Doug McLennan (21) 35pts
NTP: 2/11th - Nick Stone

Congratulations to Elizabeth Alston for
winning B Grade Nett at the Inverleigh La-
dies Open and Bowl with a score of
94 - 26 -68.

Sun's Shining Thanks To Solar Home Savings

The Victorian Government has helped thousands of families slash an annual \$279 million off their energy bills – with more than five million individual solar panels installed on rooftops, thanks to our Solar Homes program.

And as of this month, Solar Homes has delivered 2 gigawatts of power across Victoria – close to double the amount generated by Yallourn and nearly as much as Loy Yang A.

The program represents 13 per cent of the total renewable capacity installed in the state, with its solar panels having cumulatively generated 6.5 gigawatt hours of power – enough cheap renewable energy to power every fridge in Victoria for almost two years.

The program has seen 350,000 solar panel, hot water, and solar battery systems installed through rebates and interest-free loans.

The last 12 months have been Solar Homes' biggest, with 7,873 approved applications last month – including 4,435 rooftop solar approvals and 3,125 solar hot water approvals.

Eligible households can access a \$1,400 rebate to install solar panels, a further \$1,400 interest free loan and a further rebate of up to \$1,000 to replace their hot water system – cutting \$3,800 from upfront installation costs.

Customers who maximise their solar can save around \$1,000 each year on their energy bill. Combined with hot water, heat pump savings can be up to \$1,400 a year or at least \$1,600 with a battery.

Victorians are taking control of their energy bills with solar now installed on 30 per cent of Victorian homes – a significant increase from 14 per cent when the Solar Homes program started six years ago. Since then, the program has also supported 5,500 jobs and delivered free training for plumbers and electricians to upskill.

Kids Go Free For Footy Round 24

The Government is making tickets free for all kids 14 years and under for Round 24.

Secured by the Government in a Victorian-exclusive partnership with the AFL – the Kids Go Free in Victoria initiative will be supported alongside the time-honoured AFL Grand Final Parade and AFL Grand Final Footy Festival.

One of the tightest AFL seasons in history will all culminate in Round 24. The MCG will host two matches with Melbourne vs. Collingwood and Richmond vs. Gold Coast, while Carlton will clash with St Kilda at Marvel Stadium.

Kardinia Park will see Geelong Cats vs. West Coast Eagles and Mars Stadium in Ballarat will host the Western Bulldogs and GWS Giants.

Boost For Football And Netball Across Victoria

The Victorian Government is supporting local footy and netball clubs as they head towards the finals, with new grants to ensure more Victorians can play the sport they love close to home in regional Victoria.

Grants of up to \$250,000 are available for regional and outer metropolitan councils to apply for grants for sports infrastructure developments including court lighting upgrades, changeroom overhauls, new pavilions and more, to benefit their local clubs and communities.

Successful recipients in recent years include the Hepburn Shire Council which received \$250,000 for netball court and oval lighting upgrades at Daylesford Football Netball Club, and \$250,000 for Hindmarsh Shire Council to upgrade Nhill and District Sporting Club's home ground at Davis Park.

Developed in partnership with the AFL, AFL Victoria and Netball Victoria, the program has invested more than \$40 million and delivered more than 575 projects since 2005.

The Government's Country Football and Netball Program is part of more than \$23 million invested in this year's budget and more than \$2.3 billion invested since 2014 to deliver world class community sport infrastructure and programs that increase participation and improve accessibility for more Victorians.

Applications close on Monday, 30 September 2024. For more information on the program and to apply, visit sport.vic.gov.au/funding.

Supporting Breastfeeding

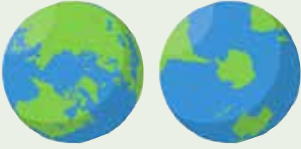
The Victorian Government is making sure new mums who choose to breastfeed their babies are getting the specialised support they need free of charge and close to home.

Breastfeeding does not always come easily, and it is important for new mums and their babies to have free support readily available to address any difficulties they may be having.

As part of the More Support for Mums, Dads and Babies initiative in \$4 million has been invested over four years to increase lactation support across the state.

The Victorian Budget 2024/25 also invested \$28.8 million over three years to meet increased demand for universally delivered MCH services, dedicated Aboriginal services and the enhanced MCH program which provides extra support for families facing challenges such as disability, mental health, family violence and housing instability.

Parents will also be able to call a qualified MCH nurse at the 24/7 MCH line to discuss any concerns about their child's health and nutrition, breastfeeding or parenting issues – with over 100,000 callers benefiting from this support every year.



The Climate Report

Judy Cameron

Massive disinformation campaign' is slowing global transition to green energy

Selwin Hart, the assistant secretary general of the UN says a global 'backlash' against climate action is being stoked by fossil fuel companies

He contrasted the perception of a backlash with the findings of the biggest poll ever conducted on the climate, which found clear majorities of people around the world supporting measures to reduce greenhouse gas emissions. The survey found 72% of people wanted a "quick transition" away from fossil fuels, including majorities in the countries that produce the most coal, oil and gas.....

Governments must take note, said Hart, who acts as special adviser on climate to the UN secretary general, António Guterres. "This should alert political leaders – those that are ambitious are not only on the right side of history, they're on the side of their people as well.

He warned that the consequences of inaction were being felt in rich countries as well as poor....., many thousands of people are finding it increasingly impossible to insure their homes, as extreme weather worsens."Ordinary people are having to pay the price of a climate crisis while the fossil fuel industry continues to reap excess profits and still receives massive government subsidies."

Full story: <https://www.theguardian.com/environment/article/2024/aug/08/fossil-fuel-industry-using-disinformation-campaign-to-slow-green-transition-says-un>

'Astonishing' Antarctica heat wave sends temperatures 50 degrees F above normal

A record-breaking heat wave unfolding at what should be the coldest time in Earth's coldest place has scientists concerned about what it could mean for the future health of the Antarctic continent, and the consequences it could inflict for millions of people across the globe.

Temperatures since mid-July have climbed up to 10 degrees Centigrade above normal over parts of Antarctica and unseasonable warmth could continue through the first half of August.....

Summerlike heat in the dead of winter – even if much of the continent is still below freezing – is an alarming development for a place more capable than any other of generating catastrophic sea level rise as fossil fuel pollution continues to drive global temperatures upward.

Most of the planet's ice is stored here, and were it all to melt, would raise average global sea levels by well over 150 feet (45 metres). Even smaller icy features, like the so-called Doomsday Glacier, could raise sea levels by 10 feet

(3 metres) if they were to melt – catastrophic amounts for the world's coastal communities.

In recent years the feeling was that the Arctic is the place where all the rapid change is happening and change was happening quite slowly in Antarctica. But this is just another event that's showing change can also happen quickly in Antarctica.

Full story: <https://www.cnn.com/2024/08/03/climate/antarctica-heat-wave-sea-level-rise>

Record Ocean Heat In 400 Years Means Great Barrier Reef is "In Danger"

Coral reefs thrive in a relatively narrow temperature range; after particularly hot summers reefs show extensive bleaching, which if maintained leads to coral death. This has been a major contributor to coral decline worldwide, including the GBR, the Earth's largest living structure. Although these facts are agreed, some doubt remains as to how well corals can adapt to higher temperatures..... Henley does not want his work to be used to justify despair. "We can never lose hope. Every fraction of a degree of warming we avoid will lead to a better future for the human and natural systems of our planet," he said. "We hope that our study equips policymakers with more evidence to pursue deeper cuts in greenhouse gas emissions internationally.

Full story: <https://www.iflscience.com/record-ocean-heat-in-400-years-means-great-barrier-reef-should-be-officially-in-danger-75482>

Fires in North America

USA August 9, 2024 As of now, 91 large active wildfires are being managed with full suppression strategies nationwide. Wildfires have burned 2,358,571 acres nationwide. About 27,013 wildland firefighters and support personnel are assigned to wildfires, including 28 complex and 4 Type 1 incident management teams, 608 crews, 1,576 engines, 169 helicopters, and six Modular Airborne Fire Fighting Systems, or MAFFS.

Canada August 9, 2024

891 Active fires (4,400 year to date)

Area burned 3.1 million acres YTD

Honest Government Ad by Juice Media

by Cathy Cheadle

There is a short video by The Juice Media which is a send-up of the government and Freedom of Information Laws - [youtube.com/watch?v=n6O7gHI5YKA](https://www.youtube.com/watch?v=n6O7gHI5YKA) Be warned, though, there is frequent swearing, and use of the "F" word.

Juice Media (www.thejuicemedia.com) points out how, before elected, Anthony Albanese criticised the Morrison government saying, "We don't need a culture of secrecy, we need a culture of disclosure. Protect whistleblowers, expand their protections and the public interest test." Now in government, it is a different story, with war crimes whistleblower David McBride currently in prison and ATO whistleblower Richard Boyle standing trial.

Before elected, Albanese promised to "reform freedom of information laws so they can't be flouted as they have been by this government." Yet, in the past five years costs of processing Freedom of Information (FOI) requests have gone up while more requests are being denied. There is a five year backlog of FOI requests of over 2,000 and when they are forthcoming they are heavily redacted and out-of-date. The Greens and Coalition united to force an inquiry into the FOI system, but Labor made every effort to block it.

There is a petition on www.stopsecrecy.com.au if you would like to sign it.



OZ TREES NURSERY & TREE PLANTING SERVICES

- Affordable seedlings—over 200 species
- Complete plantation service—farm forestry, shelter, aesthetics
- Deep ripping & mound ploughing. Rotary bed forming
- Our experienced staff will help you select species for your site conditions and needs

Also available—tree planting tools, milk cartons, plastic tree guards & bamboo stakes



OZ TREES

569 Warrowie Rd. Colac
 P: 5233 6280 F: 5233 6393
 E: info@oztrees.com.au
 W: www.oztrees.com.au
 Open Monday—Friday
 9am—4:30pm

Phone OzTrees for professional advice,



STS

ACCOUNTING GROUP

Your Taxation & Superannuation Specialists.

Winchelsea

5267 2673

www.surftax.com.au

winchelsea





Dance

ENROLMENTS NOW OPEN!

Winchelsea

Dance Classes

REGISTER NOW

JAZZ - THEATRICAL TAP - HIP-HOP
 CLASSICAL BALLET - CONTEMPORARY
 Pre-School - Adults
 Beginner - Advanced Levels

www.melsdancecentral.com.au

direct

TEMPORARY FENCING

FOR HIRE - SUPPLIED & ERECTED - 7 DAYS
 GEELONG - BELLARINE - COLAC - SURF COAST
 PHONE CAM 0417 310 800

DownRyte Excavations

- Excavations
- Drilling and Piling
- Rock Placement
- Tree and Stump Removal

Sean Hunwick

Mobile: 0409 447 288

Email: downryte@activ8.net.au

Winchelsea Churches



St John's Catholic Church

Father Joseph Panackal
0404598558

Harding St, Winchelsea 3241
MASS TIMES
5pm Sat. AUG. 3, 10, 17, 24 31,
5pm Sat. SEP. 7, 14, 21, 28

St Thomas' Anglican Church

Rev'd Phil Jacobson
0477 672 042
stthomaswac@gmail.com
Barwon Tce, Winchelsea
Service 10am

Winchelsea Uniting Church

0475 777 301
uca.winchelsea@gmail.com
Hesse St, Winchelsea 3241
Services 9.30am Sundays

Thought for the Week

"There is nobody else like you
The more you can quiet your own thoughts, fears, doubts and suspicious, the more will be revealed to you from the higher realms of imagination, intuition and inspiration."

**John Bader,
Former U/C Accredited
Lay Preacher**

"There's Nothing New Under The Sun"

How often have you heard it said that the number of people going to church is getting less and less? Compared with twenty years ago that's probably a very true statement!

For many people, the business of life doesn't leave a lot of room for much else, let alone getting out of bed on a Sunday to go to church. You know what it's like, young families to look after (and don't they take some looking after!!!) work commitments, sporting activities for all members of the family, friends, and relations to visit, holidays to squeeze in, the list goes on and on.

Yet there is still a keen sense of "spirituality" that flows through the community. There's a sense of "Wow!" as you play with a puppy or kitten. A sense of "Why me!" as you look at your children or grandchildren and realise what a great gift you've been given to help raise. A sense of "There's something bigger!" in so many things. All of these cause us to consider the big questions of life and how we fit into the scheme of things. This is part of today's spirituality because these experiences cause you to wonder about bigger things which often defy explanation.

Our church, St Thomas, does the same thing, but we do it in a particular style and fashion which is also slowly changing. Notwithstanding however, it seems that there is a timeless consistency with the "message" that lies beneath what we do.

In the first half of the 8th century BC the Old Testament prophet Amos and had something to say (on God's behalf) to the people at the time. He said that they needed to be much more concerned about injustice in the world and actually work towards doing something about it! He tied that reluctance to help others in with the way they were leading really self-centred, selfish lifestyles and how that was impacting on their society to the detriment of others! He also was really critical at the "church" of the time and said that they had

an almost 'pretend' religion without any true substance to back it up! People didn't "live out" the lives that they claimed to have!

Much the same thing is being said today. You see, a timeless message!

But beneath it is always an invitation to move away from such self-centredness whether its power, image, position, wealth, or selfishness, and to link in with that force behind the sense of "Wow" so that we can start to change the world for the better, beginning with ourselves. A lot of the things that bother us and inhibit us have already been dealt with (look up "Easter" on Google) so they no longer need to get in the way. Good News eh!

So, let me encourage you to not worry about what the world seems to think, but rather hold on to the God that you have experienced throughout your life through the "Wows," and continue to trust that sense that there's something there to care for you at every moment. By doing this you will continue to be part of what the church calls "the family of God" and you can enjoy the amazement that this brings every moment of your life.

We continue to get together at 10.00am each Sunday in a warm church hall seated on comfortable chairs as we continue to explore how the world sees us and why we're called to act in congruent ways within that world. This time together is actually really good, and it's now structured so that everyone who comes along can find something which has some significance for them. If you'd like to explore a bit more, feel free to ring 0419 322 385.



Jenny

Jenny is a Yorta Yorta woman from northern Victoria. She came to Winchelsea in 2009. Dr Jones has completed her thesis "Indigenous Families Beyond the Voids of Colonial History", a process of telling the story of her family. Stolen at 11 years of age, great grandmother Mollie was trained as a 'domestic', father growing up in a 'boys home', a story of tragic sadness at the hands of the 'colonists'. Jenny acquired a rich range of skills from her parents – woodworking, dressmaking, appreciation of art, and above all, a sense of her strength as a proud first nations woman. Dressmaking apprenticeship at The House of Franke Stuart led to her decision to take her skills and teach others. As a secondary school teacher Jenny was able to connect with her own painting style, one that has afforded her numerous exhibitions. As a highly regarded artist her paintings also tell the stories of her family. Jenny supports first nations students at Deakin University with the National Indigenous Knowledge Education Research and Innovation Institute (NIKERII). Winchelsea has strong connections for Jenny and she has found her space here.



This is part of the series of photos about Winchelsea locals from the 'Why I choose to live in Winchelsea' photographic exhibition at Winchelsea Shire Hall.

Grants To Modernise And Improve Kinders Across Victoria

The Victorian Government is making sure more kindergartens have the modern facilities and technology they need to help children thrive, with new funding available for upgrades and improvements across the state.

Early childhood education providers can now apply for a share of \$10 million to help upgrade and improve their facilities or access the latest IT equipment.

Grants of up to \$750,000 are available to eligible organisations for renovation and refurbishment projects that

modernise and improve kindergarten learning environments for children.

Funding for smaller-scale improvements is also available, with up to \$150,000 on offer for minor infrastructure projects that improve the quality of kindergarten services.

Up to \$2,000 is available to kinders and eligible service providers to purchase computers, televisions and other technology for use in educational programs and service administration, to help future-proof our kindergartens and blend play-based learning with the latest digital technology.

Applications for IT applications close on 4 September 2024 and grants for facility upgrades and minor works close on 2 October 2024. To apply for a grant or find out more, visit schoolbuildings.vic.gov.au/building-blocks-grants-improvement.



The A-Grade Team



A grade stars in action!



Ebony Berg

Casey Carroll and Hannah Garner



📍 WINCHELSEA BLUES

WINNERS!



80-27



New Grants Support Farmers To Plant More Trees For Bees

Bee Friendly Farming's popular Tree Grants are back for another round, with farmers across the country being supported to plant more trees for bees.

Grants of up to \$10,000 are available to farmers and land managers to plant pollinator-friendly trees that are indigenous to their farms, with Bee Friendly Farming providing farmers and land managers with \$1 for every tree planted, thanks to grant partner One Tree Planted.

The program is administered by When Bee Foundation, and CEO Fiona Chambers said the Tree Grants support pollinators while also benefitting farmers.

"The Bee Friendly Farming Tree Grants program is a great opportunity to give landholders an extra incentive to expand their tree planting and provide habitat and diverse floral resources to support pollinators," Ms Chambers said. "The grants are one way the Bee Friendly Farming program supports and empowers landholders to manage their land in a way that both supports pollinators and enhances yields from crops."

To receive a Tree Grant, farms must be certified with Bee Friendly Farming. The grants, which start at \$1,000, more than cover certification costs, making it both good for the environment and a sound business investment.

This is the third year the Tree Grants have been offered. So far, 33 Bee Friendly Farming Certified landholders across five states have been approved for grants totaling over \$81,000 to plant pollinator-friendly trees.

"The grant program has far exceeded our expectations in terms of area of certified land, coverage across Australia and the range of farmer enterprises signing up to be certified," Ms

Chambers said. "To date the grant funding is helping establish 92ha of pollinator habitat and that number continues to grow."

One Tree Planted Asia Pacific Regional Director Beth Dalglish said the organisation is keen to continue the partnership and help increase biodiversity on farms and beyond.

"We're happy to play a role in encouraging food producers to prioritise pollinators and support the planting of locally native trees to attract bees and other beneficial insects," Ms Dalglish said.

Successful applicants will receive a contribution of \$1 per tree planted, with grants between \$1,000 and \$10,000

available. Larger grant requests will be considered. Applications must be received on or before 5pm AEST on Tuesday, 10 September 2024.

To be eligible to apply for these Tree Grants, farms must either be a Bee Friendly Farming Certified farm or have a Bee Friendly Farming Certified application submitted and pending approval by the tree grant closing date.

Apply for Tree Grants at www.beefriendlyfarming.org.au/tree-grants-application

Apply to become Bee Friendly Farming certified at www.beefriendlyfarming.org.au/categories/bff-certified

For more information email info@beefriendlyfarming.org.au

TOMORROW

COPACC
Colac Otway Performing Arts & Cultural Centre
95-97 Gellibrand Street, Colac VIC 3250

14 August | 11AM

Gina Hogan in
A Country Girl at Heart
Complimentary Morning Tea
from 10am

Renowned for her self-devised shows like The Women of the 60's, The Belles of Broadway and The Christmas Belle, Gina, a singer, dancer, actress, and musician, captivates audiences nationwide. Now, with A Country Girl at Heart, she returns to her roots, celebrating hits from country greats like Dolly Parton and Patsy Cline. Gina's vocal versatility, endearing personality, and infectious humour promise a nostalgic, fun-filled trip down memory lane, ensuring that the show appeals to a diverse audience with its timeless appeal.

BOOK NOW at copacc.com.au,
at the Box Office and
on 03 5232 9418 (#2).
Single Ticket \$24,
Concession \$21.60,
COPACC Member \$19.20



Healthy Hectares Guide Launched For Corangamite Small Block Owners

A free, easy reference guide has been released to help small landholders in the Corangamite region create productive and environmentally sustainable properties.

Produced by Corangamite Catchment Management Authority (CMA) and launched in Colac last night during Landcare Week, The Small Blocks Big Dreams Healthy Hectares Guide is tailored to small-scale producers, bush block owners and those managing properties for horses and livestock in the region.

Full of practical tips and local contacts, the A5 glove-box friendly guide contains information on soils, water, biodiversity, pests, and pastures. Initially designed for participants of the Small Blocks Big Dreams (SBBDD) project, the Healthy Hectares Guide is relevant to all Corangamite small landholders who can access a complimentary hardcopy through their local Landcare networks, or digitally via the Corangamite CMA website.

Corangamite CMA Sustainable Agriculture Facilitator, Karen O'Keefe said, "The Corangamite region stretches from Ballarat to Geelong, around the Bellarine, and along the coast to Peterborough in the west of Victoria, and is one of Australia's fastest growing regions. With so many tree-changers new to the area, we want to empower small property owners to care for the biodiversity and health of their land and water - to teach them to farm more sustainably and think strategically."

The Small Blocks Big Dreams program, delivered by Corangamite CMA in partnership with Landcare networks and groups from early 2022 to April 2024, was conceived in 2021 due to the increase in small landholders moving to the Corangamite region since the start of the coronavirus pandemic. Supporting more than 150 small landholders across Corangamite better care for their properties and the environment, participants enjoyed six rounds of workshops and property tours; and afterwards received a visit from Corangamite CMA and Landcare staff who helped develop tailored land

stewardship action plans. Participants were also offered up to \$2000 to support the delivery of on-ground works on their properties.

"The Small Blocks Big Dreams Healthy Hectares Guide is a legacy document that supports existing participants and acts as a bridge for new participants, providing continuity of learnings and inspiring landholders in the future to begin their stewardship journey," Ms O'Keefe continued.

Clem Wetherall from the Southern Otway Landcare Network said, "The Healthy Hectares Guide captures in a really accessible way all the information you need as a landowner. It puts all the pieces together about water, soil, topography – all the things that make your property what it is."

Small Blocks Big Dreams participant Vicky Bosnar said, "Coming from the city, having just recently bought 80 acres and being a novice at everything, this is just empowering for us. The whole program has been so beneficial - we have learnt so much, I didn't want it to stop. When you've come from the city to the country you feel a bit overwhelmed that you don't have any machinery, you have no knowledge, and you're looking around for who can help you, and Small Blocks Big Dreams has been absolutely

fantastic to assist with this."

Small Blocks Big Dreams participant Emma Hobbs said, "to have all the information we need in one place for when we are out and about is going to be really helpful."

Small Blocks Big Dreams participant Peter Smolderen said, "It's amazing how everything is condensed within one book. We want to show this to friends who are thinking of getting land – this guide is such an easy reference to start."

The Small Blocks Big Dreams project is one of 11 Our Catchments, Our Communities regional on ground projects, funded by the Victorian Government to support catchment stewardship, health, and resilience. For more information visit ccma.vic.gov.au/projects/small-blocks-big-dreams/.

Landcare Week (August 5-11) is an annual celebration of Landcare during the first week of August that acknowledges the Australians who are actively restoring, enhancing and protecting the natural environment in their community. This year's theme is 'Landcare Is For Everyone (L.I.F.E.)'.





Café La Hoot

have you tried
'owl' coffee?

1 willis st cafelahooot@gmail.com 02407 528 999

TRENCHES & HOLES PTY LTD.



PHILLIP ROBERTSON

☎ **0427 672 945**

WINCHELSEA

- General Earth Works
- Driveways
- Trencher
- Kanga Loader
- Grader
- Excavator Work (3.5 & 6.5 Tonne)
- Tip Truck
- Rock Breaker
- Post Holes & Shed Footings

A.B.N 74006896898

Water Delivery



WAZZA'S
WATER CARTAGE

Stainless Tanker Up to 22,000 ltr loads
Barwon Water Registered

Domestic & Rural Water Supplies

Call Wazza

Mob: 0428 877 260

Email: wazza@wazzas.com.au Web: wazzaswater.com

M & L DRAYTON

PLUMBING SERVICES

REG No 24356 C/A No C02594

- Domestic and Rural Plumbing
- Roofing
- Sewerage & Septic
- LPG & Natural Gas Connections
- Motorised Drain Cleaning
- Backhoe Hire

Phone Mark 5288 7244

PO BOX 98 WINCHELSEA 3241

Mobile 0428 520 142



- DECKS - SAUNAS
 - FLOORING - PERGOLAS
 - WEATHERBOARDS
 - HORSE SHEDS
 - CLADDING - FENCES
- ALL THINGS TIMBER AND MORE...

INSTAGRAM guim_designs

CALL PAT ON

0401 232 674

Surf Coast Shire Council postal election

My council, my vote



Vote by post this October

Ballot packs will be mailed to voters enrolled in the Surf Coast Shire Council general election from Monday 7 October. Complete and return your ballot material ASAP. Ballot material must be in the mail or delivered to the election manager by **6 pm on Friday 25 October**.

If you will be away

If you will be away when ballot packs are mailed, or your address has changed since Wednesday 7 August, you can request for your ballot pack to be redirected by completing the online redirection form at vec.vic.gov.au/redirections, or call 131 832.

Requests for redirection must be received by 5 pm on Monday 9 September.

Large print and braille ballot papers

Large print or braille ballot papers are available for voters who are blind or have low vision – please register by 5 pm Tuesday 10 September. To register, call 03 8620 1314 during business hours.

Early votes

If you will be away during the voting period (7–25 October), you can go to your local election office to vote in person, from 10 am on Wednesday 18 September.

The Surf Coast Shire Council election office is at:

1/1 Haystacks Drive
Torquay

How to nominate as a candidate

To nominate as a candidate, you must:

- be an Australian citizen and enrolled on the voters roll for Surf Coast Shire Council AND
- be eligible to become a councillor should you be elected AND
- have completed the mandatory candidate training before lodging your nomination with the election manager.

To nominate, complete the nomination form and lodge it with the election manager together with the \$250 nomination fee. Nomination forms can be lodged by appointment during business hours from Monday 9 September until 12 noon on Tuesday 17 September at the election office.

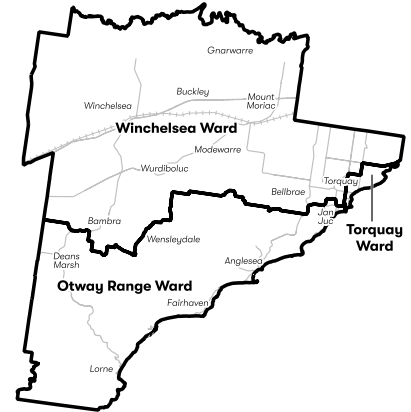
Visit vec.vic.gov.au for more information and to pre-complete your nomination form using the online Candidate Helper. The online Candidate Helper will be available from Tuesday 20 August.

If you use the online Candidate Helper, print your pre-completed form and make an appointment to lodge it with the election manager along with the nomination fee.

Call the election manager from Monday 9 September on 131 832 to make a nomination appointment.

Nominations close

12 noon Tuesday 17 September.



Candidate information session

6 pm Wednesday 4 September at Council Chambers, 1 Merrijig Drive, Torquay

Candidate information kits containing nomination forms and other electoral information will be available online and from the election manager.

State-enrolled voters can register for free VoterAlert SMS and email reminders at vec.vic.gov.au

For enquiries in languages other than English:
Arabic (Arabic) 9209 0100 • ܐܘܪܝܝܬܝܢܐ (Assyrian) 9209 0160 • ဗမာစာ (Burmese) 9209 0161 • 简体中文 (Mandarin) 9209 0106 • 廣東話 (Cantonese) 9209 0101 • Hrvatski (Croatian) 9209 0102 • ڊاري (Dari) 9209 0193 • Thujonjān (Dinka) 9209 01119 • Ελληνικά (Greek) 9209 0103 • ىگزرآ (Hazaragi) 9209 0162 • Italiano (Italian) 9209 0104 • ភ្នំពេញ (Khmer) 9209 0192 • 한국어 (Korean) 9209 0194 • македонски (Macedonian) 9209 0105 • नेपाली (Nepali) 9209 0163 • ىسراف (Persian) 9209 0195 • ภาษาไทย (Thai) 9209 0164 • Türkçe (Turkish) 9209 0110 • ڊورا (Urdu) 9209 0165 • Tiếng Việt (Vietnamese) 9209 0111 • All other non-English languages 9209 0112
vec.vic.gov.au | 131 832 @electionsvic

Authorised by S. Bluemmel, Electoral Commissioner, 530 Collins Street, Melbourne, Victoria.



MRP Steelworx

Matthew Partridge
p 0418 672 334
e mrpsteelworx@yahoo.com.au

Welding Service

- Onsite welding
- Farm maintenance
- Farm machinery & equipment repairs
- Cattle & sheep yards
- Custom built trailers
- Supply & install gates



5234 6585 0417 385 984
For all your domestic & stock water.
Also available for road and civil construction
Local owned and operated.

52672192 R & K Creative Framing
for all your framing needs

free quotes
pension discount
specialist in Age & Disability Modifications

Ray & Kim Jansen
10 Witcombe st
Winchelsea 3241

Ray The Home Maintenance HANDYMAN
abn 47929623462

0414672192



Winchelsea Supermarket

Trading Hours
Monday to Saturday
8.30am to 7.30pm
Sunday
10am to 7pm
Ph: 5267 2676
29 Main St, Winchelsea

Antique Repairs

By **Doug Burns** est. 1976

- All Furniture
- French polishing
- Carving
- Veneering
- Wood Turning
- Porcelain



Unusual Requests Welcome

180 Barwon Terrace, Winchelsea

0428 672 704

All About **Mowers & Chainsaws**

Repairs to all makes and models of ride on mowers, domestic mowers, pumps, chainsaws, brushcutters and small engines.

Trading Hours: Mon - Fri 8am - 5pm Saturday 8am - 12 noon

5267 2266 Cnr Princes Hwy & Lennox St Winchelsea

www.allaboutmowers.com.au
accounts@allaboutmowers.com.au

FERRIS COX STIHL BRIGGS & STRATTON VICTA



SOUTHERN GRAIN STORAGE PTY. LTD.

AG SUPPLIES FERTILISER GRAIN STORAGE SEED CLEANING

(03) 5267 2351

Winchelsea Men's Shed



For The Community
Men's Shed Kindling/Offcuts
Bags of Kindling/timber offcuts
are available for pick up from
the Men's Shed on Wednesday's
from 9.30 to 2.30.
If you need a delivery made you
can call Bill on 0438 083 373.
The price for a bag of kindling is
now \$7.00 (up from \$5.00).
Nesting Boxes
Bird or animal nesting boxes are
available from The Men's Shed.
These can be made to order.
Call in on any Wednesday
to have a chat.

SERVICES & ACTIVITIES IN WINCHELSEA

VLINE TRAIN SERVICES

TO MELBOURNE:

Mon - Fri 6:41 am, 7:57am, 11:14am, 2:08pm, 7:23pm
 Sat - Sun 9:26am, 1:30pm, 7:18pm

TO WARRNAMBOOL:

Mon - Fri 8:56am, 11:55am, 2:50pm, 5:27pm,
 6:45pm, 8:50pm
 Sat - Sun 8:47am, 2:46pm, 8:34pm



COUNTRY WOMEN'S ASSOCIATION

7pm second Wednesday of month
 Winchelsea Senior Citizens' Hall



WINCHELSEA GIRL GUIDES

Our Unit meets at the Catholic Church Hall,
 Harding St Winchelsea each Monday 4.30pm-6pm
 All girls 5yrs- 15yrs Welcome!
 Contact Yvonne Orchard 0448 672 630
 or Emily LaPorte Phone 0476 719 381



1st Modda & 1st Winchelsea SCOUT GROUP

Joys: Tuesdays of school term 5-6pm
Cubs: Mondays of school term 6:30-8pm
Scouts: Tuesdays of school term 6:30-8:30pm
 All at Modewarre Hall, Cape Otway Rd
Venturers: Wed at Walton's Rd Venturer Den
 Contact Marie McPadden 0409 330147



WINCHELSEA SES

Every Wednesday
 Visitors and inquiries welcome
 0408 102 802



BUS TO THE HUB

For reservations on the weekly bus
 to the Eastern Reserve Hub,
 please phone 52671202.

Winchelsea and District COMBINED PROBUS CLUB



Senior Citizens Rooms,
 Harding St, Winchelsea.
 New members always welcome.
 Enquiries Lorraine 0417 467 927

SURF COAST MOBILE LIBRARY

Hesse St, Fridays, 2pm-5pm
 Surf Coast Mobile Library
 parked in Hesse Street (outside Shire Hall)
 Fridays 2:00 and 5:00pm unless it is a Public Holiday.



SOCIAL BRIDGE

Every Tuesday 10.30 am - 1.00 pm
 Senior Citizens Centre
 36 Harding Street Winchelsea
 New players always welcome
 Contact Elaine Atkinson 0458009616

WINCHELSEA TAXI

0429 672 888 or 5267 2888
 Wheelchair accessible
 10 seater bus available.

WINCHELSEA TRANSFER STATION 55 Cressy Road, Winchelsea

Tuesday	2pm-4pm	Saturday	1.30-3.30pm
Thursday	2pm-4pm	Sunday	9.30-12.30pm

Closed on Christmas Day,
 but open on other public holidays
 that fall during their normal operating hours.
www.surfcoast.vic.gov.au/disposalsites

WINCHELSEA PLAYGROUP

Every second Thursday 10am-12pm
 St Thomas Anglican Church Hall
 cnr Barwon Tce and Hopkins St, Winchelsea
 Contact: Danni Menzies 0432019944
winchelseaplaygroup@gmail.com
 Facebook - Winchelsea Playgroup 2019
New families welcome





Winchelsea Community House Inc. A6247K

28 Hesse Street, PO BOX 75, WINCHELSEA, Vic. 3241

Phone: (03) 5267 2028

Email: manager@winchhouse.org.au

ABN: 48 932 340 254

Term 3 - 2024

Singing Group

When: Wednesday Afternoons
4.45pm - 6pm
(During School Terms)
Date: 14th August 2024
Where: Winchelsea Shire Hall Space
Cost: \$7.50 per session
Under 16 Free
Bookings: reception@winchhouse.org.au

Chatty Café

When: Friday Mornings
10.30am - 12 noon
Date: 16th August 2024
Where: Winchelsea Shire Hall Space
Cost: Free
Bookings: no bookings required
Chatty Café Volunteers will be present to welcome you!

Carer's Corner (NEW)

When: 30th August 2024
11.00am - 12 noon
And every last Friday of the month
Where: Winchelsea Shire Hall Space
Cost: Donation Tin
Come along and connect with other carer's and have a cuppa and a chat, and share useful resources.

Tai Chi

When: Friday Mornings
9.00am - 10.00am
(During School Terms)
Date: 16th August 2024
Where: Winchelsea Community House
Cost: \$10 per session

Crochet Group

When: Alternate Saturday Afternoons
1.30pm
Date: 24th August 2024
Where: Winchelsea Community House Space
Cost: \$5.00 per session
Bookings: reception@winchhouse.org.au

Knitting Group

When: Thursday Mornings
10.30am - 12 noon
(During School Terms)
Date: 15th August 2024
Where: Winchelsea Community House Space
Come along and learn to knit or bring your knitting project while having a chat with others!

Certificate III Early Childhood Education & Care

We are excited to be able to run this training which is scheduled to commence in Winchelsea **SOON!**
Bookings & Inquiries @ Winchelsea Community House

Sound Healing

When: 21st August 2024
Where: Winchelsea Shire Hall Space
Cost: \$40 per session
Book now: Vicki - 0400 149 749

Community Houses such as ours provide programs and activities to learn new skills, brush up on your existing skills and more than anything to connect with others in your community and reduce social isolation. New skills may help you with employment and build your confidence to in turn help others. Activities such as singing and sound healing help your mind and reduce any unwanted stresses.

Keeping Safe On The Train Network

The Victorian Government is urging Victorians to take care and pay attention when walking near trains or level crossings, with new data showing that thousands of passengers are putting themselves at risk each year.

Today marks the beginning of Rail Safety Week, which is focused on the themes of 'Pause your tunes. Looks for trains' and 'Phone down, look up'.

Last year there were 453 near misses across Metro's train network and 124 on V/Line's train network, each requiring train drivers to take emergency procedures to stop the train as quickly as possible – a train travelling at full speed of 110 kph takes more than 400 metres to come to a complete stop.

These incidents can also cause lasting trauma for everyone involved, including employees, their families, passengers, and members of the public who witness the incidents.

In 2023 there were almost 3,000 incidents of trespassing on the network, or more than eight per day.

Trespassers cause significant disruptions on the network, and delay thousands of passengers while operators check the line to ensure it is safe to resume services – just a single trespasser in the City Loop can cause delays for up to 50,000 people.

The Government continues to support public transport workers impacted by trauma from incidents across the network, as staff work to keep Victoria's public transport network safe and reliable.



V/Line Chief Executive Officer Matt Carrick; "Trains can come from either direction at any time, so always obey the signs, gates, booms and signals at level crossings, and only ever use authorised crossings."

Surf Coast Shire Youth Skills Training program empowers 75 young people.

The 2024 Youth Skills Training program has successfully concluded, empowering 75 young people from our community with valuable skills and certifications.

The Victorian Department of Families, Fairness and Housing (DFFH) funded Council to deliver the program which was held across June and July. The initiative offered participants the opportunity to engage in one of several free training programs designed to improve their employability, career readiness and skills.

The training programs included:

- White Card Certificate: A construction induction card, essential for those pursuing a career in the construction industry.
- Barista Training: Providing hands-on experience for those interested in making professional coffees and working in the hospitality industry.
- Food Handler's Certificate: Understanding safe food handling practices.
- Responsible Service of Alcohol (RSA) Certificate: Giving people working in liquor licensed venues the skills and knowledge to safely serve and supply alcohol.
- First Aid and CPR Training: Equipping participants with critical life-saving skills.

Jetaime Liberatore, a community member, attended the RSA course at the Kurrabee Myaring Community Centre, she said, "this was a very accessible program, which taught me valuable life skills."

Mayor Cr Liz Pattison said, "we are incredibly proud of the 75 young people in our community who participated in the Work Skills Program. These programs are designed to provide essential skills to boost employability and foster confidence and independence for our youth."

The success of the program would not have been possible without the expertise of our training partners, RSA for Schools and Eclipse Education, who delivered exceptional training and guidance to our participants.

As our community continues to grow, programs like Youth Skills Training are crucial in ensuring our young people are prepared for the workforce and future opportunities.

"We are very grateful to DFFH for their support through the entire Engage! Program," Mayor, Cr Liz Pattison concluded.

For more information about the Youth Skills Training program and upcoming opportunities, please contact youthdevelopment@surfcoast.vic.gov.au

DAVIC AG

CONTRACTING AND EARTHMOVING

For all your harvesting needs

Mowing, raking, round bailing, paddock prepping, spreading and sowing

Call Dave on **0417 579 973** Bambra



WINCHELSEA FACEBOOK

Non-profit community Groups and Pages



What's on in Winchelsea	facebook.com/WhatsoninWinchelsea
Winchelsea FREE	facebook.com/groups/winchelseafree
Winchelsea Community Information	facebook.com/groups/207538644446972
Winchelsea Classifieds 3241	facebook.com/groups/216942861684082
Winchelsea Lost and Found	facebook.com/groups/768187693217518
Winchelsea Op Shop	facebook.com/HospitalAuxiliaryOpShopWinchelsea
Winchelsea Shire Hall	facebook.com/WinchelseaShireHall
Winchelsea Community House	facebook.com/winchelseacommunityhouse
Winchelsea Coronavirus Community Support Group	facebook.com/groups/2676957719207927/
The Green Winchelsea Residents	facebook.com/groups/515322772623126
Growing Winchelsea Inc	facebook.com/growingwinch
Winchelsea Star	facebook.com/TheWinchelseaStar
Winchelsea Movie Club	facebook.com/winchelseamovies
Winchelsea Community Market	facebook.com/100083362387611
Winchelsea Land and River Care Group	facebook.com/envirowinchelsea/
Upper Barwon Landcare Network	facebook.com/UpperBarwonLandcare
Winchelsea & District Historical Society Inc	facebook.com/Winchelseaanddistricthistoricalsociety/
Winchelsea Wildlife Shelter	www.winchelseawildlifeshelter.com/
SCARS - Surf Coast Animal Rescue Service	facebook.com/groups/415211698950674
Winchelsea Gardeners	facebook.com/groups/779878518703025
Winchelsea & District Historical Society	facebook.com/Winchelseaanddistricthistoricalsociety/
Winchelsea Repertory Society Inc	facebook.com/winchrep/
Winchelsea Globe Theatre	facebook.com/Winchelsea-Globe Theatre-164790897641678
Winchelsea Uniting Church	facebook.com/winchelseaunitingchurch
St Thomas' Anglican Church	facebook.com/StThomasWinchelsea
St John the Baptist Catholic Church	facebook.com/pages/Winchelsea-Catholic-Church/101775670163180
Winchelsea Mainly Music	facebook.com/groups/668500343953191/
Winchelsea Health Club	facebook.com/WinchelseaHealthClub
Winchelsea Playgroup (School terms only)	facebook.com/groups/551663435367031
Winchelsea Girl Guides	www.guidesvic.org.au/
Winchelsea/Modewarre Scouts	facebook.com/1stModewarreScouts
Winchelsea Fire Brigade	facebook.com/winchelseafirebrigade/
Winchelsea SES	facebook.com/groups/WinchSES
Country Women's Association - CWA Winchelsea	facebook.com/pg/CWAWinchelsea/
Winchelsea Bowls Club	facebook.com/Winchelsea-Bowls-Club-533783333344345/
Winchelsea Blues Cricket Club	facebook.com/groups/8999049476/
Winchelsea Blues FC	facebook.com/WinchelseaFNC/
WYLD Winchelsea Youth Leisure and Drop in	facebook.com/groups/569737570027065/
Lions Club of Winchelsea	facebook.com/LionsWinchelsea
Winchelsea Probus	facebook.com/893535194971083
Winchelsea Golf Club	facebook.com/winchelseagc/ facebook.com/groups/1324943804676697

WINCHELSEA FLAX MILL



WINCHELSEA HISTORICAL SOCIETY

Hesse Street Cnr Princes Highway Winchelsea 3241

OPEN Wednesdays 1 - 4pm Fridays 10 - 3pm

by **Sandra Jones**

The Commonwealth Flax Mill of Winchelsea was officially opened on Friday November 20, 1942. It was located on the Princess Hwy where the Seed and Grain Store was. Flax was one of the first crops domesticated by man. It was used to make the linen cloth used to wrap mummies in early Egyptian tombs.

Flax mills were opened to cater for the many acres sown with flax during the war.

Due to cheaper flax being imported from abroad the mill did not stay open for long - despite a petition started by 40 workers as it would throw many local residents out of employment. There was a plentiful water supply available and brown coal could be obtained from Wensley Bray, only seven miles away, for it to continue on its system of dew retting but it was considered uneconomical to continue. The Housing Commission was active in building houses in the township for employees in order that labour could be retained for the mill.



R.A.K. DAVIS & SONS

CARTAGE CONTRACTORS

WINCHELSEA

SUPPLIER OF ALL QUARRY MATERIALS, TRUCK HIRE

CARTAGE OF GRAIN, LIME, GYPSUM & SUPER

LANDSCAPE & GARDEN SUPPLIES

56 WILLIS ST, WINCHELSEA

Ph – 5267 2094

Ryan – 0438 672 281

Email: rakdavissons@gmail.com

GREAT Bundle Deal on Bosch Hot Water... FROM **ELGAS**
Buy any Bosch Bluetooth continuous flow hot water model - 16Litre, 20Litre or 26Litre and Receive **\$100*** in Elgas bonus LPG gas credits



*For more details: www.elgas.com.au/appliances/bosch-aptiflow/16-20-26-lpg-bundle-sale

AND... for new customers, an additional \$80 WORTH OF LPG GAS CREDITS** when you open a new LPG Gas account with Elgas



**Further details can be viewed at www.elgas.com.au

Ask about the Elgas Easy Payment Plan - 12 months interest free*** on selected LPG appliances

***Further details can be viewed at: www.elgas.com.au/epp

Automatic tanker gas bottle refill **OR** gas bottle exchange refill is available for home or business....
Call today or visit our website for our many customer benefits and latest offers

131 161
www.elgas.com.au

ELGAS



SIMPLE STORAGE SOLUTIONS

- Personal & Business Storage
- Boat, Caravan & Vehicle Storage
- High Security Premises
- Individually Alarmed Units
- Electric Gate Access
- 7 Day Access & CCTV

YOUR STORAGE PROBLEMS SOLVED

5267 3116

6 ALSOP DRIVE, WINCHELSEA 3241



- ❑ LOG BOOK SERVICE
- ❑ AUTO ELECTRICAL
- ❑ TOWING
- ❑ AIR CONDITIONING
- ❑ CLUTCH & BRAKES
- ❑ TYRES
- ❑ WHEEL ALIGNMENT
- ❑ BATTERIES

CAR, TRUCK REPAIRS & Roadworthys

PH: 5267 3001

Mob: 0417 137 457

17 Alsop Drive

HESSE RURAL HEALTH

Volunteers Required

Volunteers are one of Hesse's greatest assets, playing a vital role to enhance the quality of Hesse services & client experiences.



- Bus Driver
- Outings Assistant
- Resident Visitor
- Events & Activities Assistant
- Group Wheelchair Walkers
- Appointment Escort
- Social Support Activities
- Gardening - Winchelsea
- Hospital Auxiliary Member
- Consumer Advisory Committee
- Marketing & Fundraising Committee

For more information please contact Hesse on (03) 5267 1200 or via email reception@hesse.vic.gov.au

Wightons Lawyers

Dispute Resolution & Litigation
Debt Collection
Property Law
Wills & Estates
Powers of Attorney
Business Law
Family Law

By appointment only

22 Willis Street, Winchelsea
ph. 5221 8777

www.wightons.com.au



Netball News



Melody Philpott

U13s - Bell Post Hill 22 def Winchelsea 9

Our team put up a very strong fight against a tall Bell Post Hill side, in a competitive game with many great passages of play. The team has improved out of sight and should be so proud of their season, but we unfortunately didn't come away with the win.

Best: Harper and Archie.

U15s - Bell Post Hill 20 def by Winchelsea 26

After a slow start, the U15's ignited the fire in them to deliver a phenomenal comeback. After being down by 6 goals at quarter time, a whole team effort led to a 6 goal win over Bell Post Hill. Reani Mawson, Lexi Cerniawski and Elle Chittenden provided strength and power in the second quarter to lift the intensity of the game. Another clean performance for Mila Tute returning to the goal circle, with shooting accuracy at 85.71%.

U17s - Bell Post Hill 22 def by Winchelsea 37

A massive win for the 17s today cementing our spot in 2024 finals.

The girls never looked like losing with everyone firing and playing their part.

Our goaling partnership is working so well, Reani working and doing her job to open Millie up for an easy feed. Millie has strengthened up incredibly this season playing senior competition and leads her peers well at the 10:15 time slot.

Monet was again outstanding in defence.

A tough game next week against ladder leaders East, but it will be a good lead into finals for us.

I am very proud of this group. Bring it

on!

U19s - Bell Post Hill 37 def Winchelsea 21

The Winchelsea U19s faced a tough challenge against the second-placed Bell Post Hill. Despite the pressure, Kalarni Boddington and Emily Caldicott worked hard to keep the scoreline tight. Kelsey Lewry's strong drives added a new dimension to the attacking end, helping to slow the opposition's momentum. The team has shown tremendous improvement over the season, and they're eager for one final showdown next week against a strong East Geelong side.

D grade - Bell Post Hill 6 def by Winchelsea 68

The D grade Blues put on a strong display of netball to kick off a clean sweep of wins in the senior netball this week. The Panthers' hopes for their first win of the year were extinguished by the Blues in a dominant 0-16 first quarter. Britt Hercus (WD) was cracking in stalling the Panthers attack, and orchestrating intercept opportunities for the circle defenders. Next week, D grade get the opportunity to test themselves against a top placed East Geelong side. Morale is high amongst these Blues; bring it on!

C grade - Bell Post Hill 17 def by Winchelsea 61

C grade Blues continued their strong march home against an opposition with plenty of determination. An injury to goaler Anna Smart during the warm up saw the chance for junior development star Reani Mawson to join the starting seven. The Panthers couldn't maintain their first quarter energy as the Blues powered to a 10-30 lead at half time. The Blues showcased their seamless depth as the game progressed,

bringing usual wing defender Ieisha Brown to goal attack. Ultimately a fun win for the girls, eyes ahead to a challenging game next weekend!

B grade - Bell Post Hill 35 def by Winchelsea 52

Characteristic of our B grade side, the girls opened their match against the Panthers with their highest scoring quarter. Truly uncatchable from the start, the girls won the game all over the court this week. Sophie Lehmann was a go-to target in attack for the Blues, making magic of some wayward passes into the goal ring. Connie Royal and Izzie Ryan interchanged as goal defence, and together created numerous turnovers. The Panthers were challenged by the sizzling ball speed through the Blues attack; the Blues leaving the Panthers in their dust. Looking ahead - these girls must win next week to keep a fearsome East Geelong side out of finals contention.

A grade - Bell Post Hill 21 def by Winchelsea 68

It was a wholesome win for our A grade Blues this weekend. The Panthers' first centre pass was shut down by the Blues, who were first to the scoreboard in the opening minutes. Casey Carroll was launching rocket passes early to goaling partnership Liv Paatsch and Ebony Berg. These goalers deserve a standing ovation for their performances this week - both soaring to new heights of shooting accuracy. The Panthers had opportunities to keep in touch, but struggled to find the goal ring over the Blues defence. In a nostalgic and strategic move, Kat Biscan was brought on at goal defence in the second half. Hannah Garner also entered the game in the second half, for her first A grade minutes of the year. The final result was a dominant win by the Blues. Could this be a glimpse of form good enough to take down East Geelong next week?



- Domestic and Commercial hire equipment • Industrial welding gas
- Digging and Earthmoving equipment • New trailers and trailer repairs
 - Firewood • Stockists of Royal Oil Lubricants products
 - LPG for domestic and commercial requirements

Give Chris and the Team a call on **5232 1177** or email info@colachire.com.au

www.colachire.com.au

101 Wallace St Colac 3250



Green Lead Electrical
Connecting you to a greener future
REC 23618

0467 097 101



Servicing Geelong & the Surf Coast

Specialising in all residential electrical work including:

- Switch board & lighting upgrades
- Outdoor lighting
- Electrical safety checks
- Energy efficient LED lighting
- Ceiling sweep fans & ventilation
- Energy saving advice

Phone Martin Wilkinson:
0467 097 101
greenlead@outlook.com

1132288-CG18-14



Water Supply Specialists
WATER SOLUTIONS

74 Dennis Street, Colac
5231 1861




ALL THINGS WATER:

- PUMPS - PIPES
- FITTINGS - TANKS
- POOL CHEMICALS
- IRRIGATION
- WATER PURIFICATION
- SOLAR - REPAIR

Funeral Planning
Working out what is best for you

Prepaid Funerals, Funeral Bonds, Pay-by instalments...There are many options and it's important to make the right choice



Alyson Burchell will be available by appointment to answer any questions about funerals and planning ahead

For more information or to make an appointment contact Sue on 5221 4788

Tuckers Community Office,
Surf Coast Taxation Services, 22 Willis Street,
Winchelsea

First Tuesday of the Month,
By appointment 10.00am – 12.00pm

Tuckers
Funeral & Bereavement Service
...for a life worth celebrating

Caring for families since 1883
5221 4788 www.tuckers.com.au

TREE WORKS & STUMP GRINDING



COLAC TREES

Fully insured and qualified climbing arborists.

Slashing and fire preparation.

FREE QUOTES
0488 553 650
Mathieu Vaupres

www.colactrees.com.au

Lupton BUILDERS



SPECIALISING IN QUALITY




REGISTERED Building Practitioner

- NEW HOMES
- ALTERATIONS
- GARPORTS
- BATHROOMS
- EXTENSIONS
- DECKS
- VERANDAHS
- WINDOW REPLACEMENTS
- RENOVATIONS
- PERGOLAS
- RE-GLADS

LEIGH LUPTON
0438 840 104

CHRIS LUPTON
0407 681 514

LEIGHLUPTON17@GMAIL.COM Est. 1977



Casuarina Counselling Therapy
Time For You

Counselling to help find clarity, understanding and new ways forward for relief from distress of all kinds, including anxiety, depression, addiction, relationship issues.



13 11 14





Located at 36 Main Street, Winchelsea 3241

For any enquires or bookings please contact the clinic on 5292 8028.
Or visit our website: www.winchmc.com.au

Opening Hours:

Monday - Friday 8:00am - 5.00pm
(Monday Evening Clinics available and selected Saturdays)



Our clinic accepts online bookings via the app called HotDoc.
Download the app on the App Store or Google Play or head to our website.

NATURAL GAS CONNECTIONS

M. & L DRAYTON PLUMBING SERVICES

YOUR LOCAL LICENSED

- PLUMBERS (24356)
- GAS FITTERS
- GAS CONVERTERS
- CARBON MONOXIDE TESTING

MARK 0428 520 142



Winchelsea and District

Ebony knows banking

If you need help with yours, you need to meet Ebony.

Ebony shares her knowledge of banking so you can achieve what you want from life.

And, she can meet you when and where it suits you; at the branch, over the phone, or via video call.

If you need help with your banking, call Ebony Berg, Loan Specialist on 5267 3189 or search Bendigo Bank Winchelsea.

bendigobank.com.au



Bendigo and Adelaide Bank Limited ABN 11 068 049 178, AFSL/Australian Credit Licence 237879. A1415950 OUT_33710515

Winchelsea Men's Shed



For The Community

51 Hesse Street

Every Wednesday from 9:30am

New members always welcome

**For more detail contact:
Ray Atkinson (Co-ordinator)
0407 839 139**

or

winchmensed@gmail.com

**Need a job done?
Woodworking jobs,
furniture repairs, small jobs.
Drop in and talk to us.**

HESSE RURAL HEALTH



- Acute Care*
- Urgent Care*
- Residential Aged Care*
- Community Nursing
- Dietetics
- Physiotherapy
- Occupational Therapy

- Diabetes Education
- Social Support Groups
- Counselling
- Home Care
- Health Promotion

* services from Winchelsea only

www.hesseruralhealth.com.au

P: (03) 5267 1200 E: reception@hesse.vic.gov.au





WINCHELSEA LIONS CLUB
 ARE SELLING ENVIRONMENTALLY FRIENDLY SHREDDED PAPER COMPRESSED BRICKS FOR YOUR FIRE
 SAVE ON THE RISING COST OF WOOD BY INCLUDING PAPER BRICKS AS WELL

PACKET OF 4 ROARS (BRICKS) **\$5**
 ROLL OF PURRS (SMALL ROLLS) **\$2**

AVAILABLE AT LIONS PAPER SHED
 36 HARDING STREET
 SATURDAY MORNINGS
 10AM - 12 NOON
 FROM 4TH MAY UNTIL SOLD OUT

EFTPOS AVAILABLE
 CASH ACCEPTED



Charles Stewart & Company are leading livestock and real estate service providers covering Victoria's south west

	LIVESTOCK
Jamie McConachy	0418 522879
Peter McConachy	0408 522878
Matt Nelson	0428 315400
Gerard Bohan	0400 005541
Lachie Barclay	0438 346291
John Thornton	0408 526367
Dougal McIntyre	0439 675612
Ross Spitty	0419 539717
	REAL ESTATE
Michael Stewart	0418 520467
Daryl Osborne	0419 388341
Anthony McDonald	0418 593597
Gerard Bohan	0400 005541
Stephen Lugg	0417 556098
Josh Lamanna	0417 586032

Office
 56 Bromfield Street, Colac
www.charlesstewart.com.au




HF RICHARDSON

PROPERTY

Servicing all your real estate needs
 Ken McDonald **0418 524 150**



Residential | Rural Lifestyle | Agricultural Farms




Moriac Veterinary Clinic
0447 781 089
 PHONE 24 HOURS
 784 Hendy Main Road Moriac
info@moriacvet.com
www.moriacvetclinic.com.au
 HOURS // Monday - Friday: 8am - 5pm

Commercial | Industrial | Domestic

HAMILTONS
 Truck & Bobcat Hire
 Give Aaron a Call
0438 438 623

MGT BUILDING & CONSTRUCTION

NEW HOMES | EXTENSIONS | RENOVATIONS **Ph: 0409 433 687**



Chiropractic - Remedial Massage - Myotherapy - Sound Healing - Breathwork

Chiropractic care for:

Stress & Anxiety	Pain Management
Body Aches & Tension	Family Wellbeing
Poor Sleep	Health Longevity

03 5267 2240 Shop 4/21 Hesse St Winchelsea




<https://onebodychiropractic.com.au/>






Blues News

Janet Fletcher

ROUND 17

Welcome to Blue's News:

Last weekend had the Winchelsea Football & Netball Club Inc. travel to Bell Post Hill for some very mixed results.

RESERVES:

Winchelsea Blues 11.12.78 defeated Bell Post Hill Panthers 5.5.35

Last Saturday was a stark contrast weather wise to the previous 2 weeks, pouring rain and icy cold conditions. Myers Oval was bathed in sunshine and surprisingly little or no wind on Saturday and the players from both sides noticed the lift in temperature as the games wore on.

The Reserves started strongly and finished off the first quarter in fine form having kicked 6.3 to 1.1

The Blues were never headed and took the 4 points with a solid and convincing win over the BPH Panthers.

GOALS:

Bailey Forssman 3, Dan Jones 2, Aaron Cooke 1, Jarrod Winzer 1, Coby Eagle 1, Jaiden Eagle 1, Luke Foot 1.

BEST:

Rueben James, Luke Foot, Jack Todd, Dougall Robb, Tom Kennedy, Baxter Bodington

SENIORS:

Winchelsea Blues 7.7.49 were defeated by Bell Post Hill Panthers 19.12.126

Set the previous game in reverse and you have the result. BPH Panthers came to play and completely dominated the first quarter. Try as the Blues might with changes and different tactics the Bell Post Hill outfit were too strong on the day, they were never really challenged.

Congratulations to 2 Senior Blues on playing their 50th game last week, Vice Captain Lachie Gemmill who wears the

No. 1 along with Tom Rouget who wears the No. 30. Lachie put in his usual solid performance, while Tom's game was unfortunately cut short by injury.

GOALS:

Jordan Gould 3, Dustin Baker 2, Fin Parish 1, Leigh Ellis 1

BEST:

Fin Parish, Caleb Brown, Leigh Ellis, Adam Walsh, Dustin Baker, Jordan Gould.

This Saturday will see the rounding out of the home and away games in the 2024 season, the W.F.N.C. will be hosting League ladder leaders East Geelong at Eastern Reserve, games are at the usual times with the Reserves kicking off at 12pm.

This Saturday will also see the continuation of the Winchelsea Blues Community Day where the canteen will be closed apart from the usual 50 salad rolls for the Footballers and Netballers. there will be the famous "Chuck Wagon" run by the Winchelsea Lions Club offering Hamburgers and Sausages in bread. The Mexican food truck is making an appearance by popular demand, the Coffee van will be at the Netball courts as usual, the Bar will be open from midday and there will also be games for the kids to keep them entertained.

The President's afternoon tea will run as usual.

Everyone is welcome to come and mingle at Eastern Reserve while watching the footy and some seriously good netball just before the Finals campaign begins for our Netballers. At the time of going to print every Senior Netball side will play in the Finals series at St. Albans Park.

COACHING APPOINTMENT:

By now news of Ben Moloney's Coaching appointment for 2025 has reached far and wide with so many favourable comments and good wishes

coming to the Club. Originally from Kolora-Noorat in the Warnambool League Ben joined Werribee after graduating from the Geelong Falcons he then went on to play 147 VFL games with Geelong, Werribee Tigers, and including 74 for Collingwood. Ben is respected for his work ethic and his attention to detail. He is also a 3 time Premiership player with St. Joesph's and St. Marys respectively in the Geelong Football League.

Welcome to the Winchelsea Blues Ben Moloney!

JUNIORS:

Last Saturday our Under 10's travelled to Teesdale for the last of their home and away games. The team has been very competitive this season and had a great win to finish off.

Many thanks to Mark McDonald and Byron Mathison for all their time and encouragement for the Winchelsea Blue's Under 10 Team. Huge thanks to those parents who do all the other "stuff" as well. The re build of the Juniors at Winchelsea is up and running – the aim is to have more teams on the board for next season! Well done everyone!

THE BLUE'S BISTRO:

Well we are back again this week and will continue to operate until the 26th September. MENU for this week - Flathead tails, Curried sausages, Roast Chicken. All served with vegetables or salad & chips

Chicken Nuggets & chips for the Kids - no ice cream again this week due to our Volunteers having no access to the Freezer. Hopefully the repair work to the pantry, cool room and the freezer will be completed soon.

Dessert – Apple Crumble.

GO BLUES!!



Winchelsea Taxis is now Surfcoast Taxis

Our fleet of vehicles are growing to all late models and we are covering an extended area including Winchelsea, Colac, Bannockburn, Inverleigh, Great Ocean Road and Geelong.

We have a fleet of 10 seater Maxi Vans, all with capacity to carry wheelchairs.

Surfcoast Taxis Pty Ltd
All Bookings: 0408 325 992
Fax: 5267 2699
Email: bannotaxis@gmail.com
 (Admin or Stan 0429 672 888)
 66A Batson Street
 Winchelsea 3241



Accounts NDIS provider. TAC, DVA etc

NDIS provider number 4050001044
 NDIS provider number 4050001048

Winchelsea Star

ISSN 2202-6851



Since 1977

917722021685002

WINCHELSEA LIONS CLUB

PAPER RECYCLING

Paper depot rear of Senior Citizens Rooms
 Harding Street
NEWSPAPERS, MAGAZINES, PHONE BOOKS WANTED



RAISING FUNDS FOR OUR TOWN & DISTRICT
 5267 2011 or 0408 520 606

M&B WOOD PLUMBING

Call Matt - 0418 319 357
mbwoodplumbing.au

Servicing Winchelsea & surrounds

- General maintenance & blocked drains
- Gas fitting & hot water service upgrades
- New homes & renovations

DEFIBRILLATORS IN WINCHELSEA

Accessible to the public 24 hours a day

The Winchelsea Lions Club has compiled a list of public access defibrillators in Winchelsea. Four more have been installed at Winchelsea Primary School, Winchelsea Bowls Club Hesse St, the netball courts Eastern Reserve Hopkins St and at the Globe Theatre near the side entrance. If anyone knows any others that have 24 hour public access, please let Linda Carter know on 0439 817 263.



Bendigo Bank
11 Main Street



Ambulance Victoria
33 Willis Street



Uniting Church
33 Hesse Street



Senior Citizens
36 Harding Street



Men's Shed
51 Hesse Street



Winchelsea Golf Club
13 Anderson Street



Hesse Rural Health
8 Gosney Street



Wurdale Memorial Hall
220 Wurdale Road

