



Airfields // Highways // Off-Highways // Civils & Maintenance

# DELIVERING EXCELLENCE

---

Innovative Solutions for Airfields, Highways  
and Off-Highways Infrastructure



Safely Marking  
The Way Ahead  
[jointline.co.uk](http://jointline.co.uk)



# A Leading Force in Civil Engineering, Highways, Off-Highways and Airfield Infrastructure with Over 30 Years of Expertise

Jointline's commitment to quality, safety, and innovation has established it as a trusted partner for both public and private sectors across the UK and internationally. Our extensive portfolio showcases successful projects that leverage cutting-edge technology, a highly skilled workforce, and an unwavering dedication to excellence.

With multidisciplinary expertise and specialist capabilities, Jointline can efficiently manage every aspect of a project. Whether it's highways, airfields, off highways, or civils, the divisions work seamlessly together to deliver integrated solutions. This collaborative approach ensures that all components of a project are executed to the highest standards, providing clients with a streamlined and cohesive service from conception to completion. By combining resources and expertise, Jointline offers comprehensive, tailored solutions that meet the unique demands of each project, enhancing both efficiency and outcomes.





# INDEX

- About Jointline Limited 2
- Airfields 4
- Highways 6
- Off-Highways 8
- Civils & Maintenance 10
- Quality, Safety, Health and Environment (QSHE) 12
- Social Value 14
- Work With Us 16
- Portfolio 18



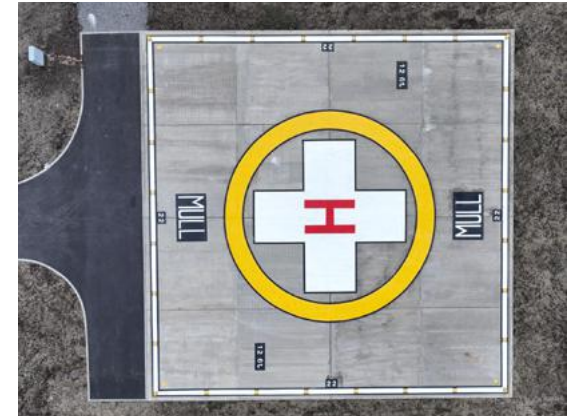
# AIRFIELDS



# PRECISION AND SAFETY FOR EVERY FLIGHT

The Airfields Division excels in providing specialised services for commercial and defence airfields. We offer civils, precision line marking, joint sealing, and grooving, adhering to EASA, CAP168, and MADS regulations. Our services are tailored to ensure minimal disruption to airfield operations, maintaining the highest standards of safety and efficiency.

- > **Airfield Line Marking:** Implementing full runway markings, taxiway delineation, and hazard identification markings with materials that enhance friction values and reduce foreign object debris (FOD) risks.
- > **Hydroblasting:** Hydroblasting services for airfields ensure efficient and precise removal of rubber deposits, markings, and surface contaminants, enhancing safety and compliance with aviation standards while minimising environmental impact.
- > **Runway and Taxiway Grooving:** Installing anti-skid grooving to improve water dissipation, reduce aquaplaning risks, and enhance surface friction for safer take-offs and landings.
- > **Joint Sealing:** Applying hot and cold applied sealants to maintain and repair joints in concrete and asphalt surfaces, protecting against water and fuel damage.
- > **Concrete Slab Construction and Repairs:** Replacing and repairing concrete pads and slabs to ensure the longevity and safety of airfield surfaces.



# HIGHWAYS



# PAVING THE WAY TO SAFER, SMOOTHER JOURNEYS



Jointline's Highways Division is dedicated to ensuring safety and efficiency on the roads through advanced line marking, high friction surfacing, and grooving services. We employ state-of-the-art technology and materials to provide durable, reflective, and skid-resistant road markings and surfaces that enhance road safety and durability.

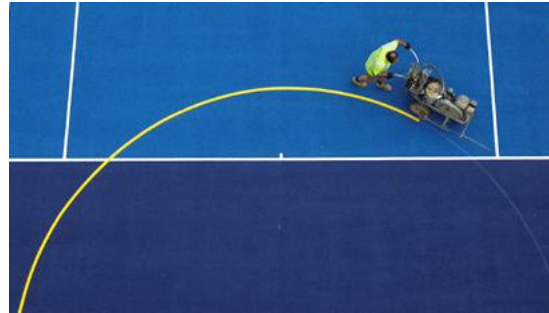
- > **Thermoplastic Line Marking:** Utilising screed, extrusion, and raised rib techniques for highly durable and visible road markings.
- > **Painted Line Marking:** Application of epoxy paint, chlorinated rubber paint, MMA, and water-based systems for versatile road marking solutions.
- > **High Friction Surfacing:** Installing high friction surfacing to improve skid resistance and safety in high-stress areas.
- > **Road Stud Installation and Removal:** Implementing permanent milled road studs, surface bonded studs, and pedestrian delineation studs to enhance visibility and safety.
- > **Surface Grooving:** Cutting precise grooves into asphalt and concrete surfaces to improve water displacement and increase surface friction.
- > **Joint Sealing and Overbanding:** Sealing cracks and joints in road surfaces to prevent water ingress and surface degradation.
- > **Concrete Repairs and Road Reconstruction:** Conducting concrete patch repairs, reinforcement, road reconstruction, and asphalt repairs to maintain and improve road infrastructure.
- > **Hydroblasting:** Hydroblasting services for highways and precise removal of line marking, rubber deposits, and surface retexturing, enhancing safety and compliance with aviation standards while minimising environmental impact.

# OFF-HIGHWAYS





# INNOVATIVE LINING SOLUTIONS



Jointline's Off-Highways Division specialises in internal and external line marking. Our solutions are designed to enhance safety, visibility, and functionality in a variety of environments, including warehouses, distribution centres, cold stores, sports facilities, and racing circuits.

- > **Internal Line Marking:** Providing high-performance line marking solutions for warehouses, factories, cold stores and other indoor facilities to enhance safety and organisation. We utilise advanced materials like Instant UV Cure, one and two pack epoxy paints, and MMA for durable and long-lasting markings.
- > **External Line Marking:** Offering a range of marking solutions for distribution hubs, retail, car parks, walkways, and other outdoor areas to improve safety and navigation. Our services include thermoplastic, painted systems, and anti-slip paint systems.
- > **Circuit Line Marking:** Specialising in precise and durable line marking for racing circuits, ensuring clear demarcation and enhanced safety for track users.
- > **Sports Pitch Marking:** Delivering high-quality line marking for sports pitches, including football, rugby, and athletics tracks, using materials that ensure durability and visibility under various weather conditions.
- > **Anti-Slip Coatings:** Applying anti-slip coatings to increase surface grip on stairs in stadiums, car parks, and the built environment. These coatings are also ideal for wet areas such as behind pub bars and in kitchens, enhancing safety and reducing slip hazards.



# CIVILS & MAINTENANCE

Jointline's Civils Division delivers comprehensive civil engineering and maintenance solutions, managing projects from minor repairs to major infrastructure developments. We handle every aspect with precision, ensuring compliance with regulatory standards and client specifications.

- > **Groundworks and Drainage:** Executing groundworks, drainage installations, and flood mitigation projects to manage water flow and prevent flooding.
- > **Concrete Slab Construction and Repairs:** Constructing and repairing concrete slabs for various applications, including roadways, airfields, and industrial facilities.
- > **Asphalt and Pothole Repairs:** Using HAPAS approved materials to perform durable asphalt and pothole repairs, extending the lifespan of surfaces.
- > **Utility Installation and Section 278 Works:** Installing utilities and performing Section 278 works to support infrastructure development and compliance.
- > **Public Realm Schemes and Landscaping:** We take public realm projects from conception to completion, transforming community spaces with our comprehensive services. Our expertise includes groundworks and drainage, paving, kerbing, and landscaping, along with street furniture installation, fencing, and soft landscaping.



# BUILDING FOUNDATIONS FOR THE FUTURE



- > **Specialist Surfacing:** Delivering high-quality surfacing solutions, including resin bound, resin bonded, and tar and chip surfacing. Our surfacing services are ideal for both functional and decorative applications, providing durable, aesthetically pleasing finishes.
- > **Resin Bound Surfacing:** Creating smooth, porous, and durable surfaces using natural and recycled aggregates, suitable for driveways, paths, and public spaces.
- > **Resin Bonded Surfacing:** Applying decorative aggregates to a resin layer for a hard-wearing, non-porous finish, perfect for gradients, ramps, and heritage sites.
- > **Tar and Chip Surfacing:** Offering a cost-effective alternative to asphalt, with a natural appearance and improved skid resistance, suitable for driveways, footpaths, and cycle lanes.
- > **Utility Reinstatement:** Providing expert surfacing reinstatement services for utility contractors, ensuring minimal disruption and seamless integration with existing surfaces.
- > **Sourcing and Installing Materials:** Matching existing surfaces in carriageways, footways, and domestic applications to maintain consistency and quality.
- > **Stakeholder Coordination:** Working closely with clients and local authorities to secure necessary permits and minimise impact on stakeholders and local residents.

# QUALITY, SAFETY, HEALTH & ENVIRONMENT

Jointline places paramount importance on Quality, Safety, Health, and Environment (QSHE) across all operations. Our QSHE policies are designed to ensure that every project is executed with the highest standards of safety and environmental stewardship.

We are committed to:

- > **Quality:** Adhering to industry best practices and standards, ensuring that our projects meet or exceed client expectations. Our certifications and accreditations, including BBA and ISO standards, reflect our dedication to maintaining excellence.
- > **Safety:** Promoting a safety-led culture where all employees are empowered to check, challenge, and change unsafe practices. Our safety protocols are designed to protect the public or those local to our schemes as well as our own workforce, ensuring a secure working environment.
- > **Health:** Implementing robust health management systems to protect the well-being of our workforce. We prioritise health and safety through regular training, risk assessments, and proactive initiatives.
- > **Environment:** Minimising environmental impact through sustainable practices and responsible resource management. Our projects incorporate environmentally friendly materials and methods, reducing our carbon footprint and promoting ecological balance.



# SOCIAL VALUE

We believe in making a positive impact on the communities we serve by fostering economic, social, and environmental well-being.

- > **Community Engagement:** Actively involving local communities in our projects to ensure that their needs and concerns are addressed. We work closely with community stakeholders to enhance public spaces and support local development.
- > **Local Employment:** Prioritising the hiring of local talent and suppliers to boost the local economy and create job opportunities. We are committed to providing training and apprenticeship programs to develop skills within the community.
- > **Sustainable Practices:** Implementing environmentally sustainable practices in all our projects to protect and enhance the natural environment. We focus on reducing waste, conserving resources, and using eco-friendly materials.
- > **Charitable Support:** Supporting local charities and community initiatives through donations, sponsorships, and volunteer efforts. We encourage our employees to participate in charitable activities and give back to the community.
- > **Education and Outreach:** Partnering with local schools and educational institutions to promote STEM (Science, Technology, Engineering, and Mathematics) education. We offer site visits, workshops, and work experience to inspire the next generation of engineers and civils professionals.



We are dedicated to creating social value through our operations and projects.



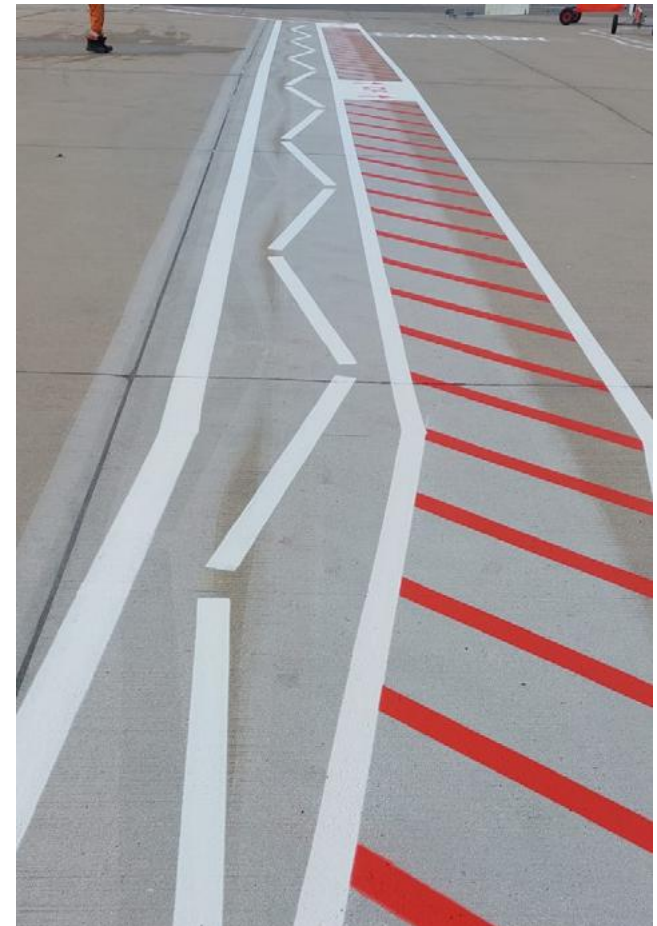
# WORK WITH US

At Jointline, we are always looking to collaborate with clients, partners, and talented professionals who share our commitment to excellence and innovation.

Working with us means becoming part of a culture that values quality, safety, and sustainability.

- > **Clients:** We provide bespoke, end-to-end solutions tailored to meet your specific project needs. Our multidisciplinary expertise ensures that we can handle all aspects of your project, delivering exceptional results on time and within budget.
- > **Partners:** We believe in building strong, collaborative relationships with our partners. Whether you are a supplier, subcontractor, or consultant, we work together to achieve shared goals and deliver superior outcomes.
- > **People:** Join our dynamic team and be a part of a company that values professional growth and development. We offer competitive benefits, ongoing training, and opportunities for career advancement. Explore our current job openings and apply to become part of the Jointline family.



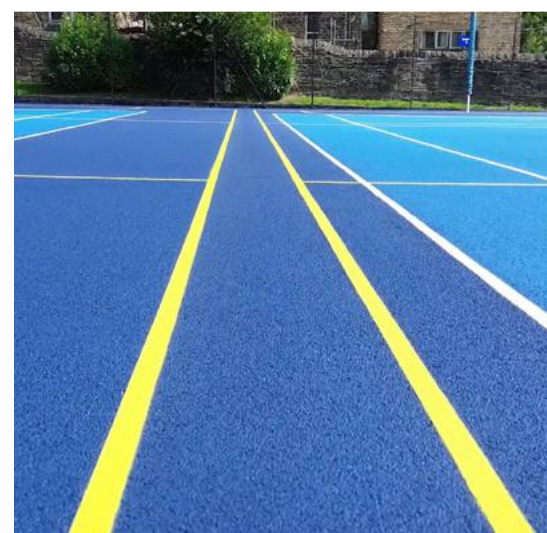
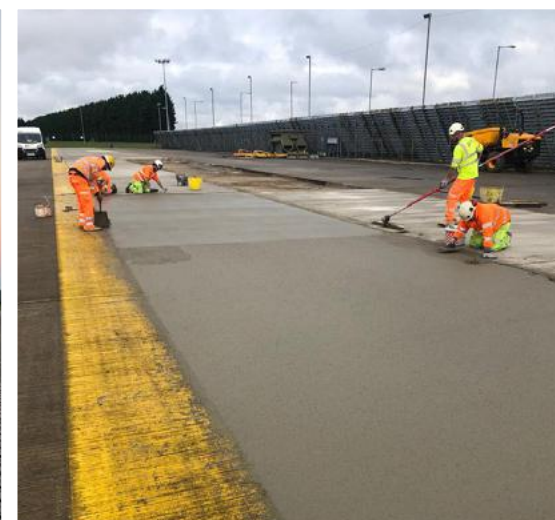
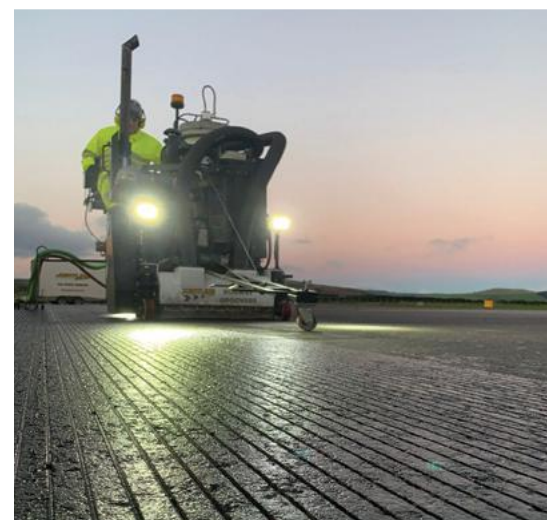


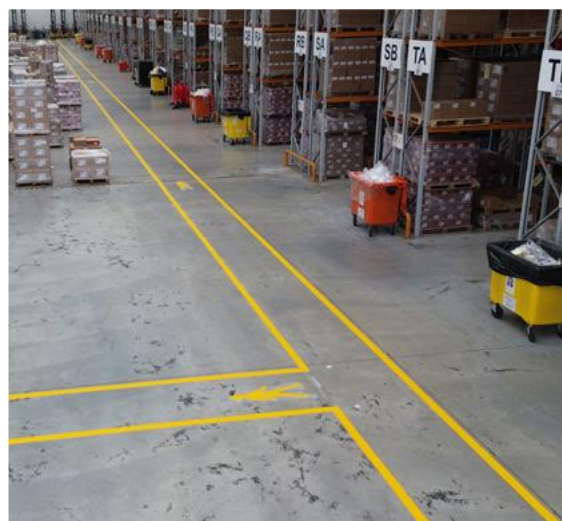
For more information on working with us, please contact us at:

Jointline Limited  
Airfield View, Camp Road  
Witham St Hughs  
Lincoln, LN6 9TW

01522 868 636  
info@jointline.co.uk  
jointline.co.uk









Safely Marking  
The Way Ahead

[jointline.co.uk](https://jointline.co.uk)

Midlands Depot: Airfield View, Camp Road, Witham St Hughs, Lincoln, LN6 9TW - 01522 868636

Northern Depot: Spartan Road, Low Moor, Bradford, BD12 0RY - 01274 736 504

[info@jointline.co.uk](mailto:info@jointline.co.uk) | <https://jointline.co.uk>

