

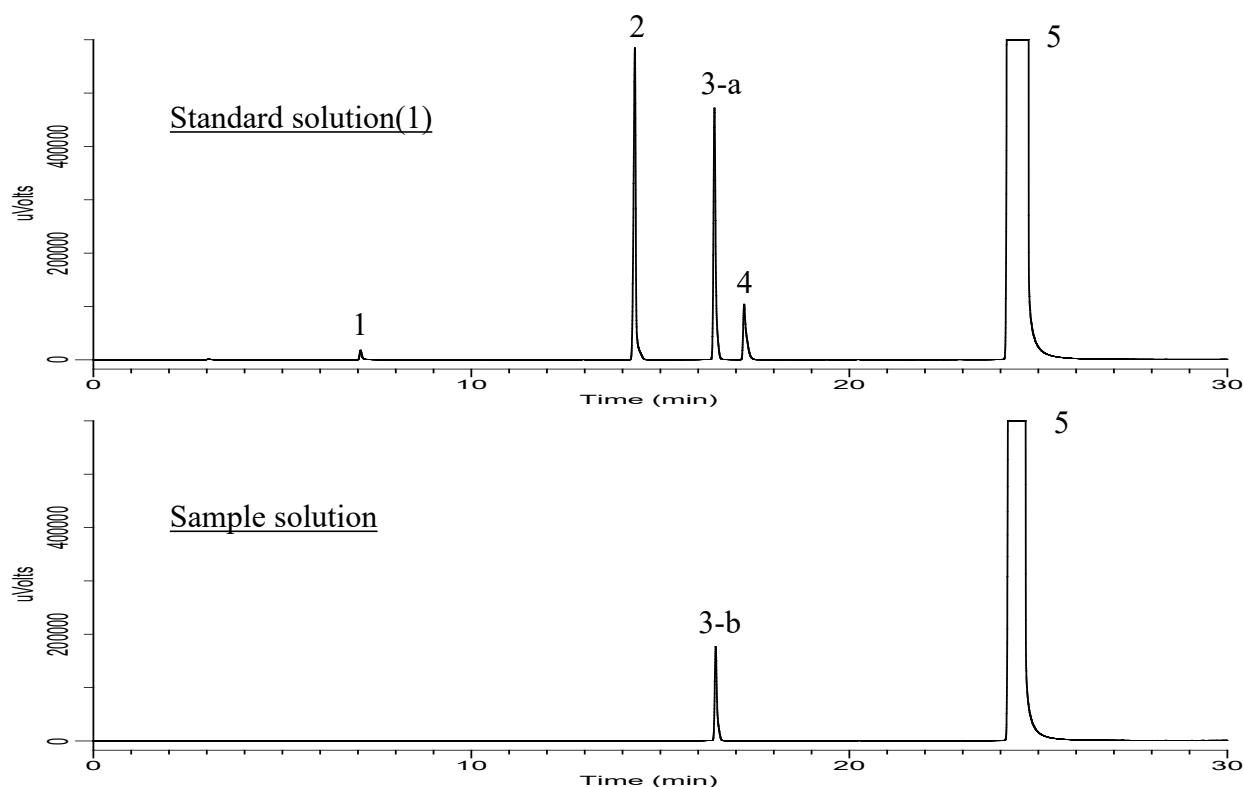
InertSearch for GC

InertCap Applications

Analysis of Benzyl Alcohol

(Under the condition of the Japanese Pharmacopoeia 18)

Data No. GA 335-1087



Conditions

System : GC4000 Plus-FID
Column : InertCap Pure-WAX
0.32 mm I.D. × 30 m df= 0.5 μm
Col. Cat. No. : 1010-68244
Col. Temp. : 50 °C - 5 °C/min - 220 °C (35 min)
Carrier Gas : He 1.21 mL/min (25 cm/sec)
Injection : Splitless
200 °C
Detection : FID Auto Range
310 °C
Sample Size : 0.1 μL
Analyte : 1. Ethylbenzene
2. Dicyclohexyl
3. Benzaldehyde
4. Cyclohexanemethanol
5. Benzyl Alcohol

System suitability

Resolution (3-a, 4) : 6.79 (≥ 3.0)
Relative retention time (1 to 5) : 0.29 (about 0.28)
Relative retention time (2 to 5) : 0.58 (about 0.59)
Relative retention time (3-a to 5) : 0.67 (about 0.68)
Relative retention time (4 to 5) : 0.70 (about 0.71)