

Aye Swe
interior design

Amalgamating a range of influences
and sensorial imagery for a
nourishing and calming environment.
///

...king serenity and
...to nature with gentle hues
...ctility, each space has its
...rhythm.



portfolio

/// A visual feast for the senses,
instilling life and vibrancy. A sensorial
atmosphere. The layered interplay
foster a seamless connection
between artistic vision and enriching
experience.

Fueled by fiery passion, adventure
and charisma, paying tribute through
a spirited approach. \\



twenty - twenty - four

Aye Swe

A recent graduate Interior Designer, driven by curiosity and positive change. Bringing a holistic approach in curating bespoke concept ideations, meaningful design narratives and promotional content.

I strive towards forward-thinking solutions and lasting impact. Committed to positive social, environmental and cultural change, I approach challenges with an adaptable and perceptive mindset. I find fulfillment in working across a dynamic range of projects, from community-driven initiatives to experimental design concepts.

Ready to embark on new challenges and transformative experiences.

Education

BA Interior Design
Australian College of the Arts
2022-2024

Cert IV Interior Decoration
Sydney Design School
2021

Highschool
International School of
Yangon
2018

Soft Skills

Lateral Thinking
Unconventional solutions to address complex challenges.

Adaptability
Flexible & resourceful in addressing unforeseen challenges.

Attention to Detail
Ensuring every aspect of a project is carefully considered.

Versatility in Work Dynamics
Able to work autonomously or collaboratively.

Interests

Graphic Design
Visual Storytelling

Performance Arts
Creative Expression & Teamwork

Film / Cinematography
Spatial Composition

Contact

(Email): athadarswe@outlook.com
(Linktree): <https://linktr.ee/huidesignstudio>

(Instagram): [hui_designstudio](#)
(LinkedIn): [Aye Swe](#)

Work Experience

Interior Design Intern
Doh Eain (Yangon, Myanmar)
Jun 2024- Jul 2024

- Doh Eain is a multidisciplinary organisation dedicated to preserving heritage, fostering placemaking and community engagement through user-centred, participatory approaches. Insights gained include heritage conservation methodologies, cross-disciplinary discussions, sustainability and capacity building strategies, ethical and social responsibilities, and impact assessments. I assisted in community events, site visits, client meetings, and project proposal decks.

Project - Based Experience

Graduate Showcase for Collarts
Nov 2024 - Dec 2024

- Curated a showreel & presentation boards for the Graduate Showcase event through promotional content creation and creative decision-making under tight deadlines.

Salvation Army Upton Road Youth Refuge
Oct 2024 - Ongoing

- Pro-bono collaboration on Upton Road's interior renovations, focusing on creating practical and compassionate design solutions. Contributed to technical documentation and the specification of cost-effective strategies.

End-to-End Services for a Commercial Project
Jul 2024 - November 2024

- Designed the interior of a retail store, including documentation, material and furnishing specifications. Curated the store's brand identity through signage, graphic design, social media presence, and marketing strategies. Liaised with stakeholders to ensure seamless project execution.

References
Reference letters available upon request.

Technical Proficiencies

Revit D5 Render Adobe InDesign Canva Clipchamp
Enscape SketchUp Adobe Photoshop Procreate Wondershare Filmora

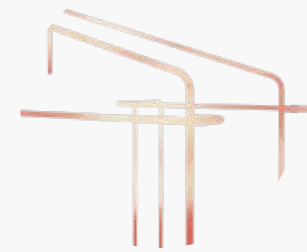


Project One

In Bloom

Youth Accommodation
St Kilda, South Melbourne

page 1-5

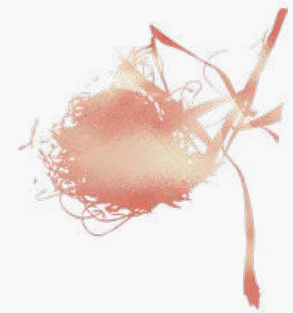


Project Two

Casa Cálido

Warehouse Conversion
Coventry, South Melbourne

page 6-12

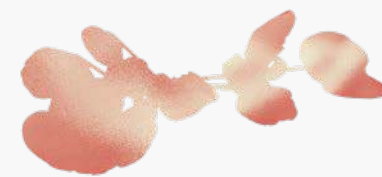


Project Three

Casis Living (Group)

Temporary Emergency Pod
Australia, Global

page 13-16



Project Four

Origins 80 Collins

Restaurant and Bar
Collins, Melbourne CBD

page 17-24



Project Five

Ace Hotel

Hotel Design
Collingwood, East Melbourne

page 25-29



Project Six

Emerge Exhibit

Virtual Exhibition
Collarts Interior Design

page 30-33

in bloom



Project
Location
Software
Project Partners

Youth Accommodation
St. Kilda, South Melbourne
Revit, D5 Render, Filmora
Lisa Le, Emily Jane Castle

Objective:

Seeking to provide a safe, inclusive, and supportive accommodation environment for young individuals facing homelessness, a highly considerate environment is needed for both the staff and youth at Salvation Army's Upton Rd. Refuge.

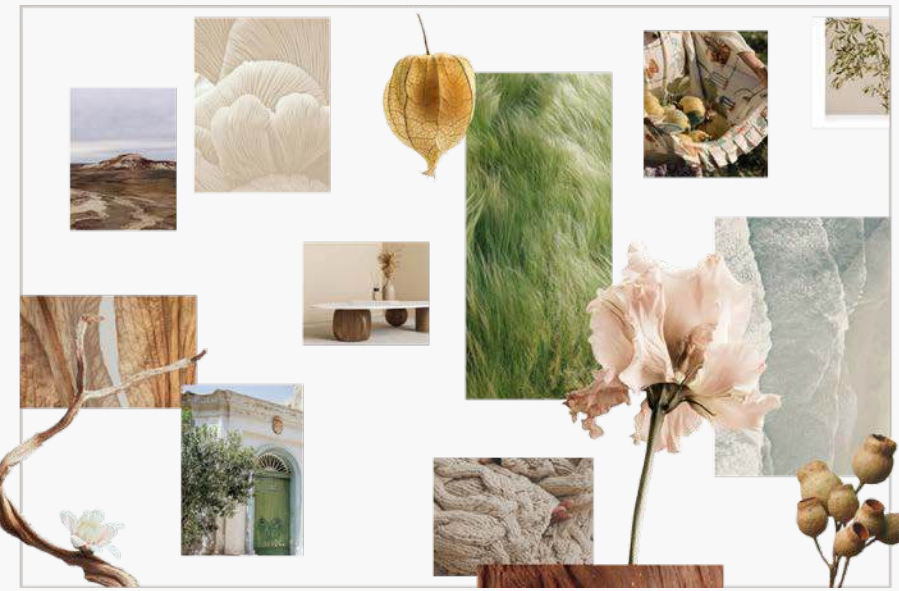
Response:

Holistically embracing the community's Psychologically Informed Environment (PIE) principles, the design mirrors this through emphasising intention and vision. The intention is to inspire a deeper sense of belonging and purpose while the vision is to support the community in their daily routines and evolving needs for years to come.

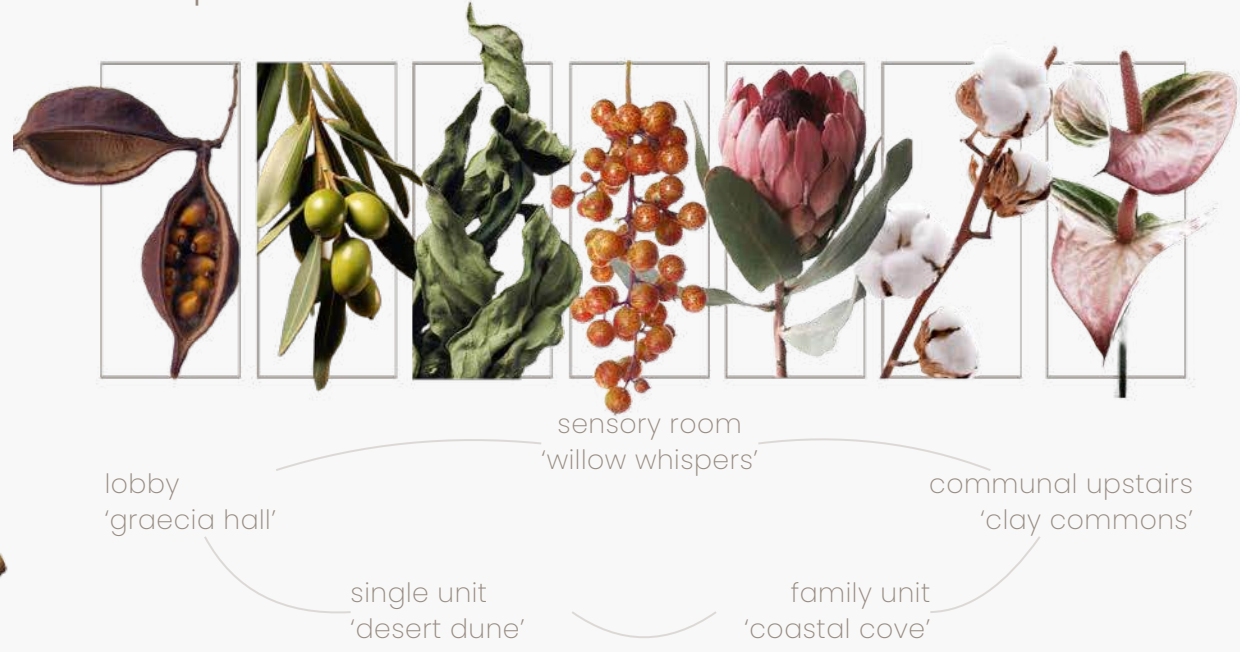
in bloom board one

Amalgamating a range of influences from the clients themselves and Australia's extraordinary landscapes, the vision for the scope of works is depicted through sensorial imagery and materiality. As the clients expressed their preferences towards nourishing and calming environments, every design element has been thoughtfully curated to evoke serenity and connection to nature while addressing practical needs. With gentle hues and warm tactility, each space has its own soothing rhythm. The lobby boasts a waiting area and cork walls for posters, while the sensory room boasts cosy seating and a functional study/water refill station.

the journey



scope of works



materials board

- M1. Acoustic Wood Panels, Wood Veneer Hub
- M2. Flexible Wood Paneling, Woodflex
- M3. Bamboo Artico Cork Wall, Market Timbers
- M4. Mocha Firwood Velour Joinery, Laminex
- M5. Silver Strata Velour Splashback, Laminex
- M6. Calacatta Gold Velour Benchtop, Laminex
- M7. Mocha Block-Out Blinds Fabric, Warwick
- M8. Taree Sand Sheer Drapery, Warwick
- M9. Ramsey Sky Upholstery, Warwick
- M10. Victory Mink Drapery, Warwick
- M11. Nimes Vinyl Flooring, Signature Flooring



- M12. Newport Gloss Subway Tile, Tile Cloud
- M13. Terrazzo Porcelain, Temple and Webster
- M14. Casper White Ceiling, Dulux
- M15. Antique White Wall Paint, Dulux
- M16. Shetland Ice Wall Paint, Dulux
- M17. Terracotta Wall Paint, Dulux
- M18. Green Spruce Wall Paint, Dulux
- M19. Preschool Quarter Wall Paint, Dulux
- M20. EchoPanel® 349 Vineyard, Woven Image
- M21. Pico Embossed 495 Duck, Woven Image
- M22. Pico Embossed 501 Chalk, Woven Image

graecia hall selections



F1. Magnus Console, GlobeWest. F2. Artie Coffee Table, GlobeWest. F4. Custom Benchseat, Norsu Interiors. F5. Potted Plant, Upton Rd. Garden.

floorplan: graecia hall



floorplan: willow whispers



willow whispers selections



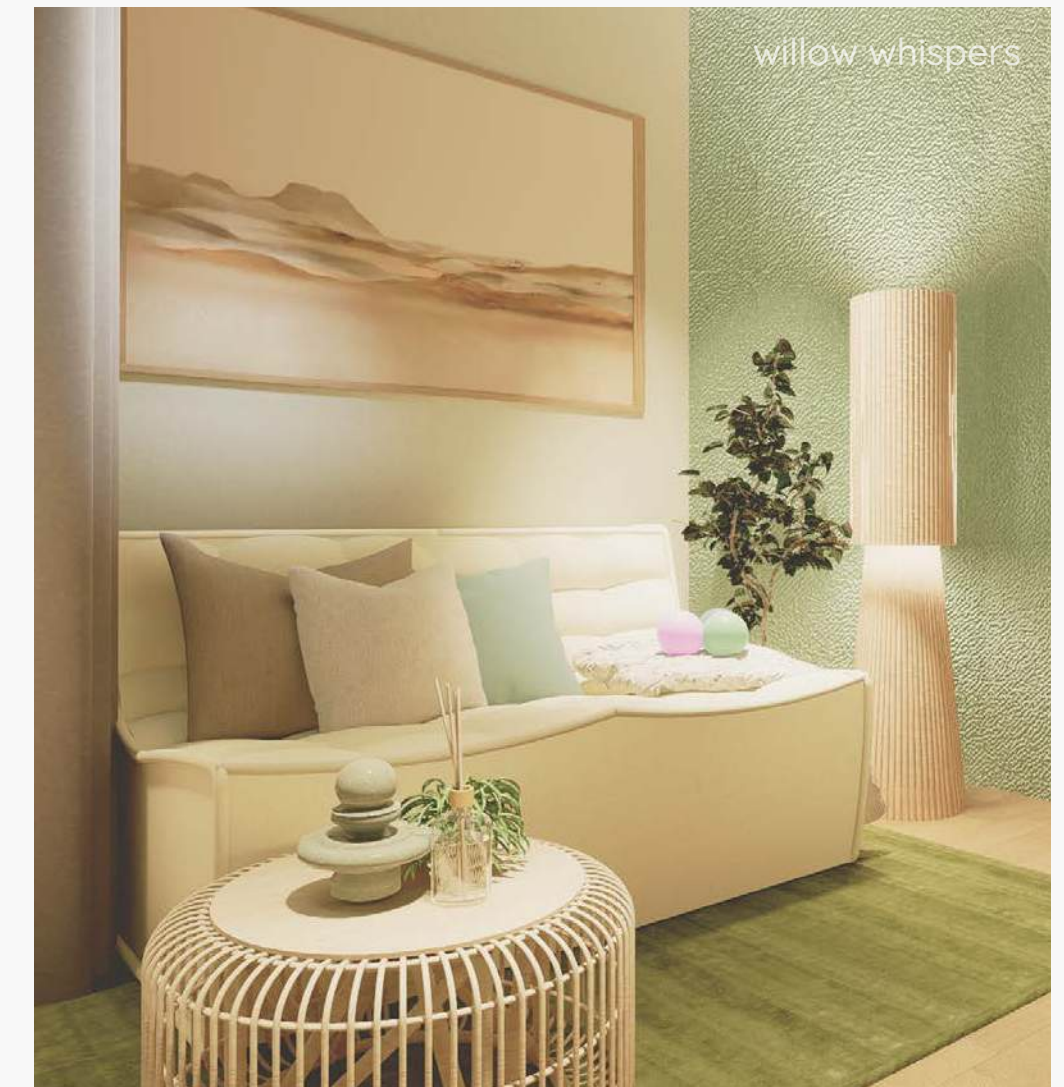
F6. Theo Chair, GlobeWest. F7. Custom Desk with Storage and Shelving. F8. Home by Roberto Moro Artwork, Gioia Art. F9. Raffia Floor Lamp, Lighting Collective. F10. Ethnicraft 22 Seater Sofa, Trit House. F11. NDIS Sensory Foam Beanbag, BAHA. F12. Bubble Round Rug, Rug Culture. F13. Willow Olive Highland Rug, Double. F14. Bamboo Side Tables, Temple and Webster. S5. PBIG Zip Water Tap, Water People.



graecia hall seating area



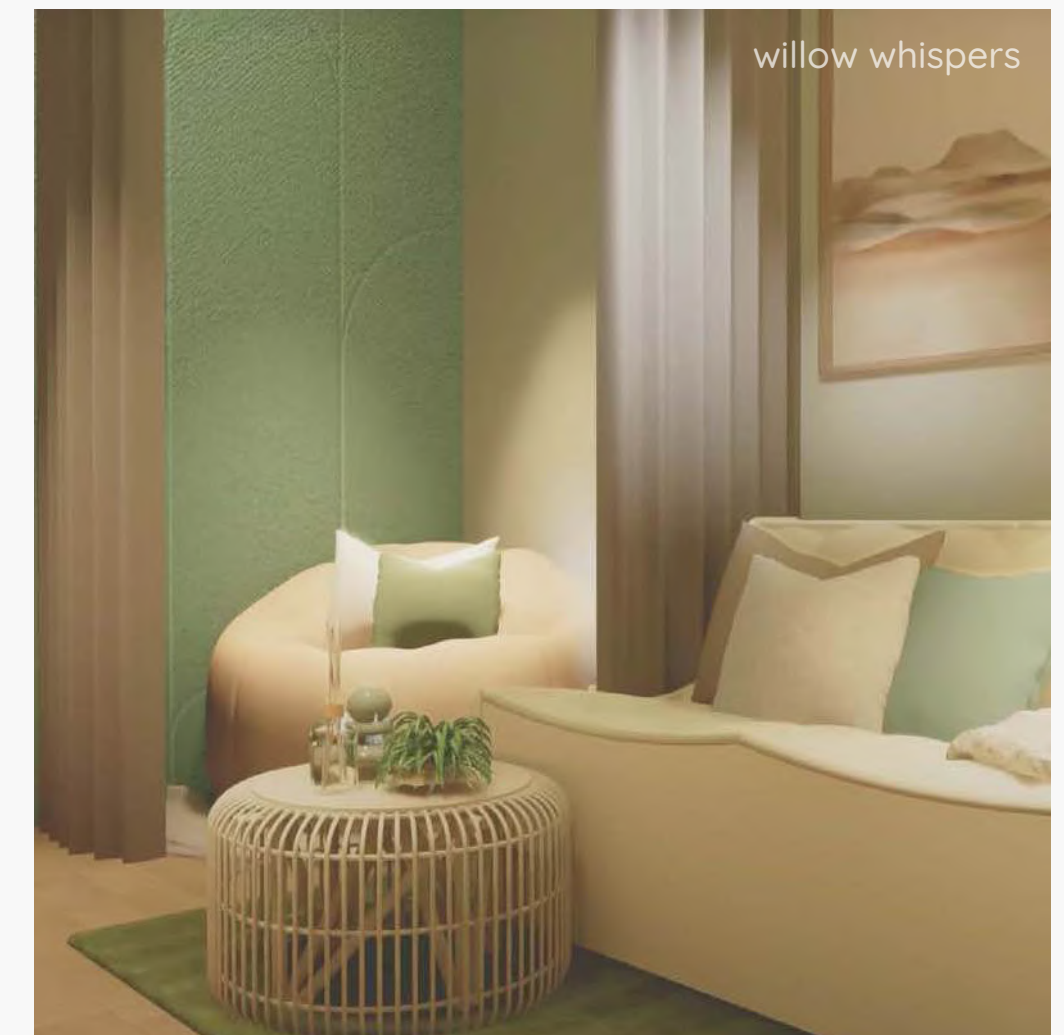
graecia hall



willow whispers



willow whispers



willow whispers

in bloom board two

The communal space upstairs caters to preparing meals together, hosting meetings, socialising and lounging. As a visual metaphor for a 'grounding' environment, the design elements are influenced by terracottas and flowing rivers. With abundant storage options for housing entertainment and equipment, creativity and connection is encouraged. The single unit accommodates immediate accommodation needs, including a living space, kitchen and dining, bedroom and a bathroom. The colour palette and materiality consist of muted tones and soft furnishings, bringing instant comfort and tranquility.

floorplan: clay commons



clay commons selections



floorplan: desert dune



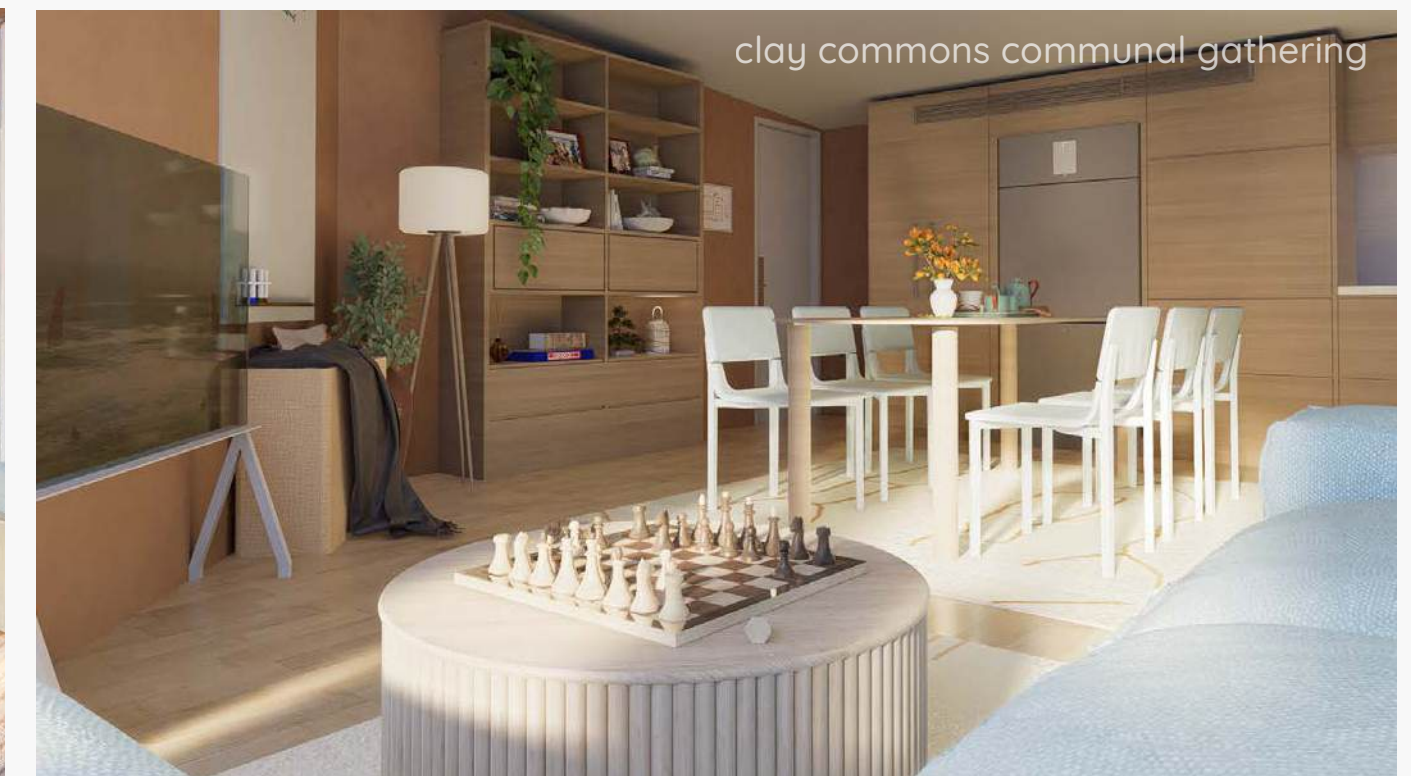
desert dune selections



overall floorplan of ground level



section of communal, lobby, single unit



in bloom board two

The family unit takes strong influences from coastal coves around Australia. The color palette draws from the serene hues of the ocean and sand, creating an environment that is both refreshing and calming. In consideration of family and children needs, safety is highly prioritised with child-proofing measure, multi-functional selections and flexible storage options. With carefully curated art from Adam Leng, depicting the connection between past, present and future, the intention is to provide a quiet yet lively sanctuary for growing families. Supporting wellbeing through attention to detail, every selection ensures the space remains a cherished haven for all who reside within.



F23. Nessa Rug, Missmara. F85. Etta Sideboard, Life Interiors. F86. Console Table Walnut, Cooper and Co. F87. Brass Arched Wall Mirror, Shine Mirrors. F88. Jude 3 Seater Sofa, Temple and Webster. F90. Samson Wood Floor Lamp, Lighting and Living. F91. Merrett Dining Chair, RJ Living. F92. Elliot Round Dining Table, RJ Living. F94. BL 18 - Adam Leng, HAKE. F95. Custom Storage Unit with Benchseat. F97. Byron Bearbag Chair, Fibre by Auskin. F98. Little One Play Mat, MIKRO. F99. Faux Fur Rug, Pottery Barn. F100. Blue Highland Rug, Double. F101. Elio Marble Coffee Table, Castlery.

F69. Storage Ottoman, Temple and Webster. F70. Scalloped Narrow Changing Table, West Elm. F71. Rocking Chair, IKEA. F72. Remi Bedside Rocker, Sacred Bundle. F73. MarcParc Yoga Sleep, Swaddle Shop. F74. Florence Lamp, Paola & Joy. F75. Wellard Natural Double Bed Frame, BedShed. F76. 'Together we grow' Original Artwork, Freestone. F77. Arched Mirror, Temple and Webster. F86. PAX TONSTAD Wardrobe, IKEA. F80. Cream Highland Rug, Double. F81. Happyymess Hand-Woven basket, Amazon. F82. Pluto Bedside Natural Ash, GlobeWest.

coastal cove selections



F43. Skogsviken Shower Rail, IKEA. F44. Otti Bondi Medicine Cabinet, The Blue Space. F45. Hemp Shower Curtain, Rowganique. F48. Kobe Wooden Stool, Pillow Talk. F105. HORNEN Shower Curtain Rod, IKEA. PB3. Asher Wall Hung Toilet, ABI Interiors. PB4. Ivy Basin Sink, ABI Interiors. PB5. Elysian Mixer & Spout, ABI Interiors. PB6. Finley Shower Rail, ABI Interiors. PB7. Elysian Mixer, ABI Interiors. PB8. Zaaha Toilet Button, ABI Interiors.

coastal cove family unit



dining vignette



coastal cove kitchen and dining

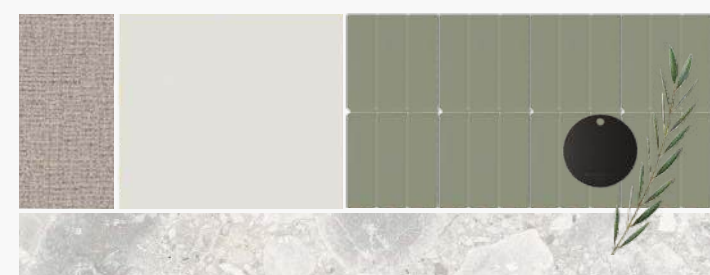
willow whispers



play space vignette



coastal cove living area



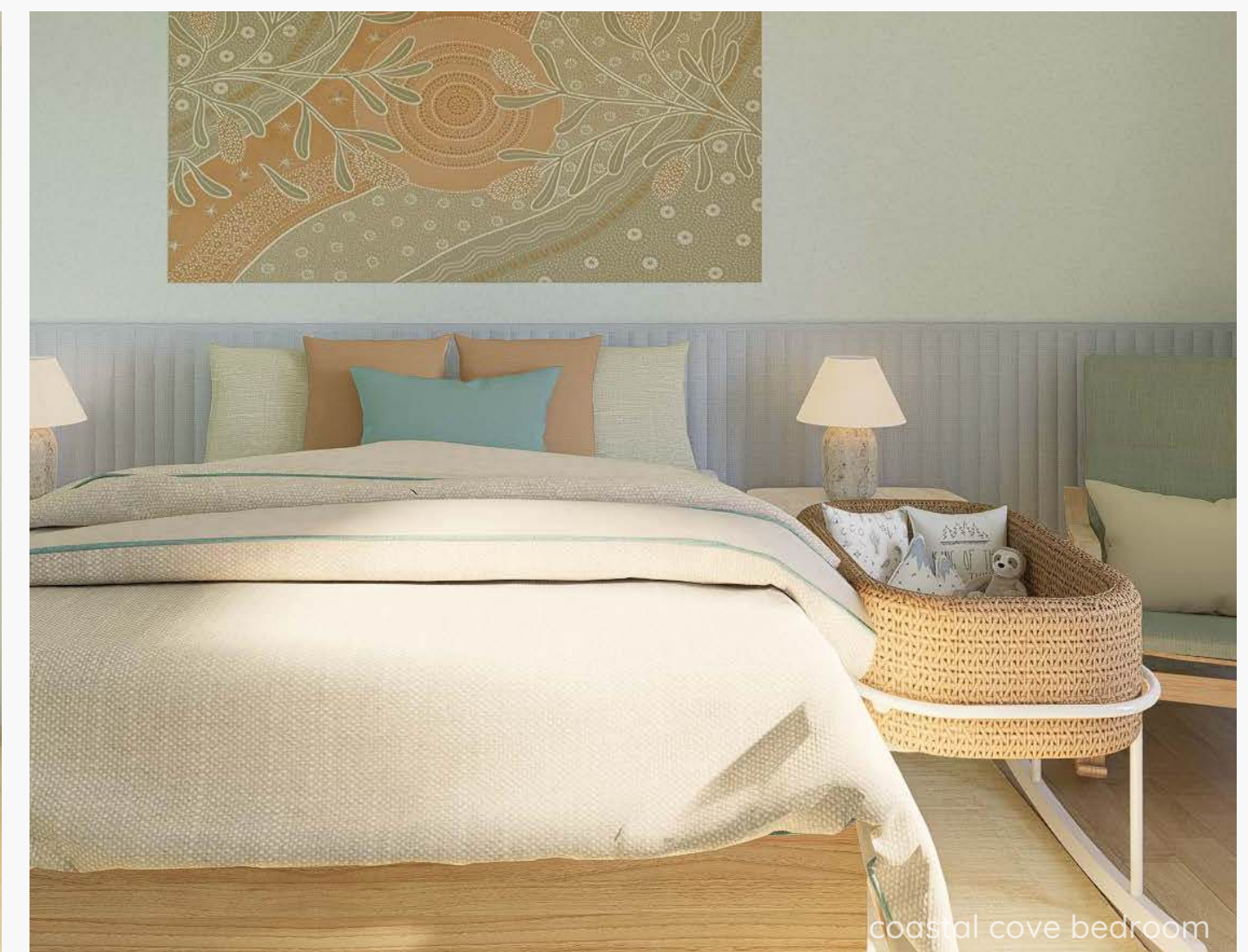
coastal cove bathroom



coastal cove bathroom



bedroom entry

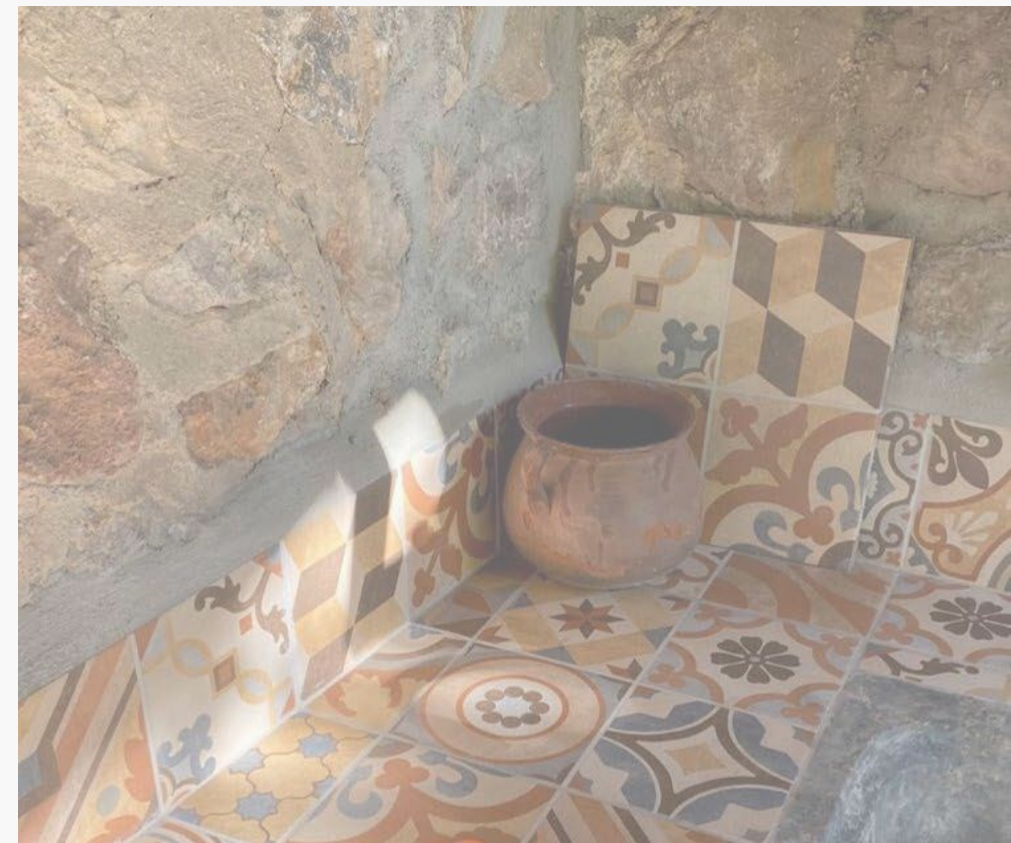


coastal cove bedroom



WALKTHROUGH





Casa Cálido



Project
Location
Software

Warehouse Conversion
Coventry, South Melbourne
Procreate, Revit, Enscape

Objective:

Blending heritage charm with forward-thinking solutions, the goal was to breathe life into a traditional warehouse, transforming it into a bespoke residence tailored for a well-traveled and active couple.

Response:

Located on the historic and bustling Coventry Street, the design honours the building's industrial past while embracing the clients' Brazilian and Spanish roots. The design proudly showcases the building's distinctive architectural features, creating a sense of comfort and interconnectedness throughout the space.

Site Analysis

South Melbourne History:

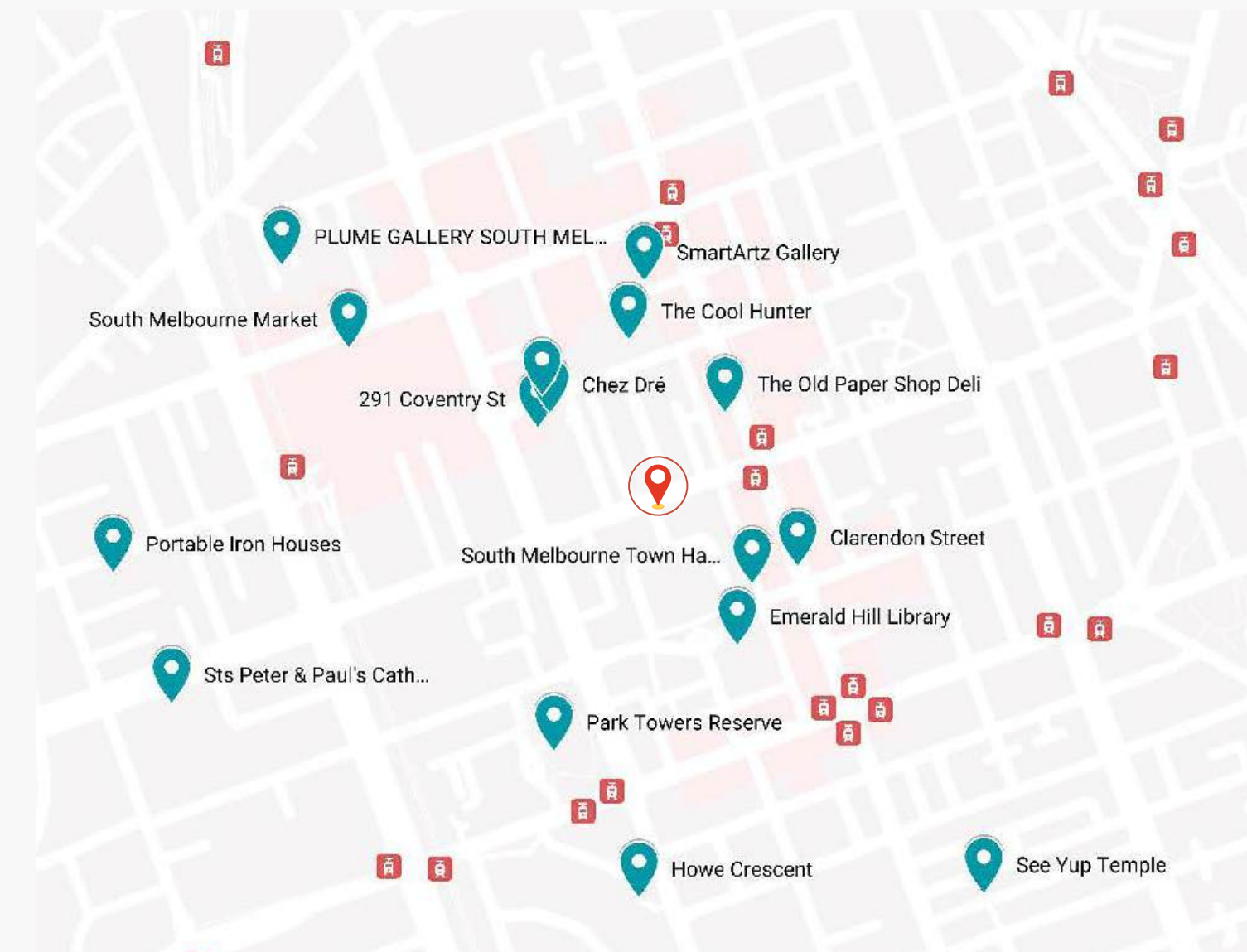
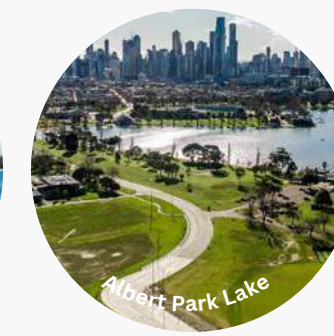
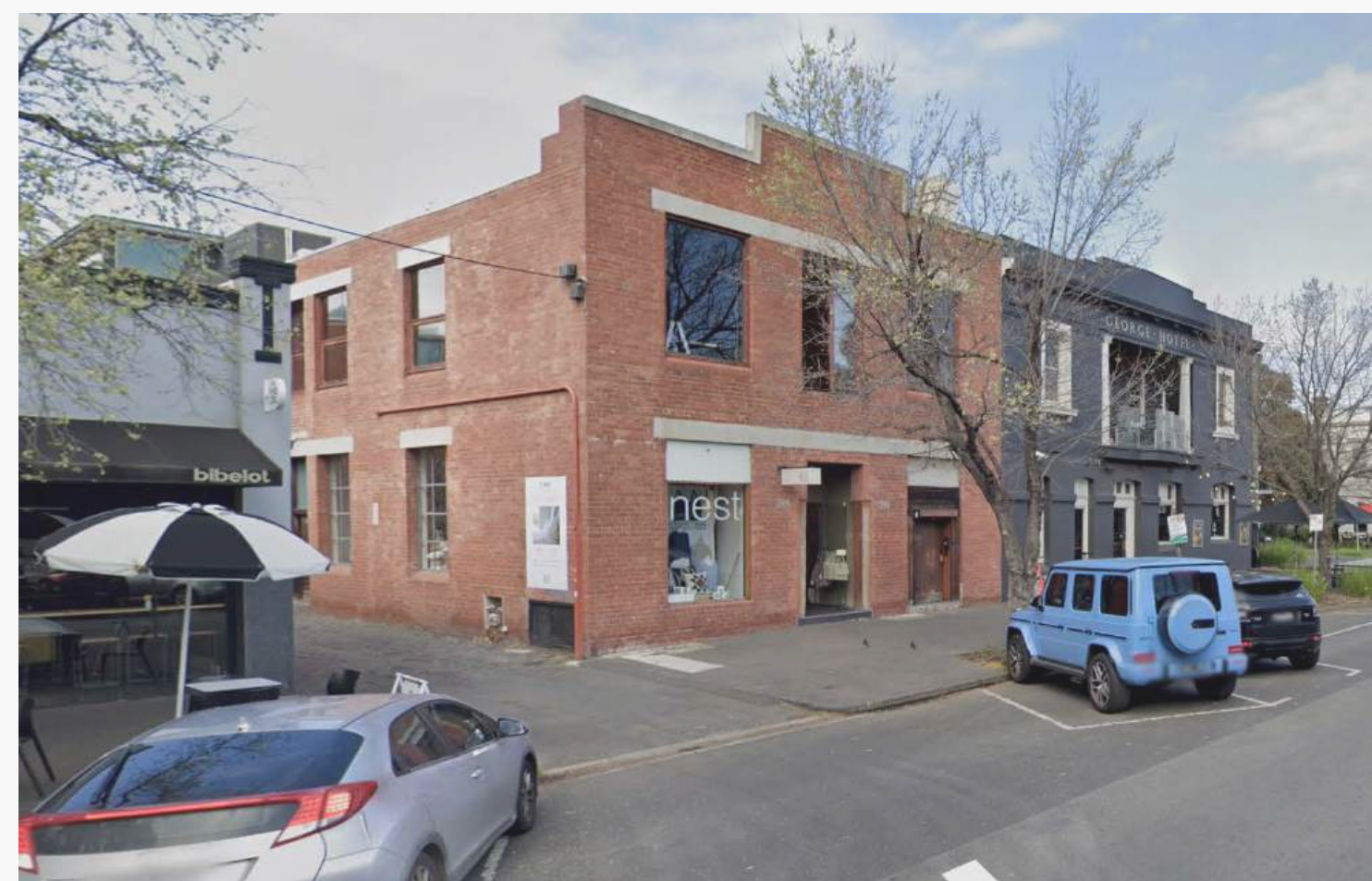
Originally inhabited by the Wurundjeri and the Boonwurrung peoples of the Eastern Kulin nation, South Melbourne was known as Emerald Hill for its lush green landscapes and began to develop as a residential and industrial hub following the establishment of Melbourne in 1835. The region attracted early settlers for its close proximity to the CBD, Yarra River and Port Phillip.

During industrialization, Coventry St. was a prominent thoroughfare, home to various residences, factories, public buildings, churches, and schools, including the South Melbourne Town Hall (1879) and the South Melbourne Market (1867).

The 20th century witnessed urban decay and industrial decline due to significant economic and suburbanization shifts, resulting in inadequate investment in urban renewal projects. However, efforts were made to revitalize the area and preserve heritage. In recent years, initiatives in urban planning, cultural and arts scenes, retail and hospitality development and community engagement have restored its historical charm and vibrancy.

The Building:

- Originally a weatherboard 2-roomed house and shop
- Early 20th century: occupied by John Smith, a furniture dealer, and later George Kingston, a carpenter
- Early 1920s: owned by Robert Williams, who constructed a brick factory in 1930
- 1930s: home to National Cake Cone Company, then Neon Electric Signs until late 1950s
- 1960s: H.C. Bancroft & Sons engineering firm with Gaggia Espresso Coffee Percolator Importers
- 1970s: Aristocrat Sportswear



Custom Google Earth Project Local Attractions Link:

<https://earth.google.com/earth/d/iUDBW4ULTkKFWgxk3eZ4xVn-2mdaFIQ4H?usp=sharing>

A prime location near prominent cultural landmarks, vibrant urban surroundings, and excellent accessibility, the area undergoes ongoing urban renewal, providing a rich and diverse environment for residents, businesses, and visitors. As part of the heritage overlay planning scheme, historical, cultural, and architecturally significant places in Coventry Street are protected, with limitations on exterior alterations and adherence to specific design guidelines.

There is a unique blend of historic charm and contemporary energy. Victorian architecture, heritage-listed buildings, and wide tree-lined streets create a picturesque atmosphere throughout the neighbourhood.

An array of commercial establishments, restaurants, cafés, South Melbourne market and hotels is within walking distance. The area also boasts art galleries, artisanal workshops, and creative spaces that contribute to a vibrant artistic scene. In addition to the urban setting, there are ample green spaces, lake reserves, jogging tracks, and sporting facilities for recreational activities.

Site Analysis

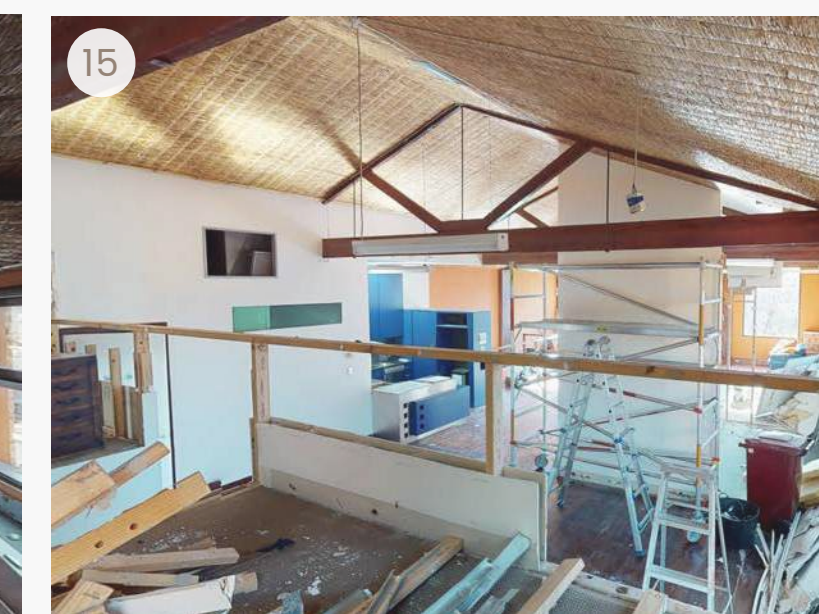
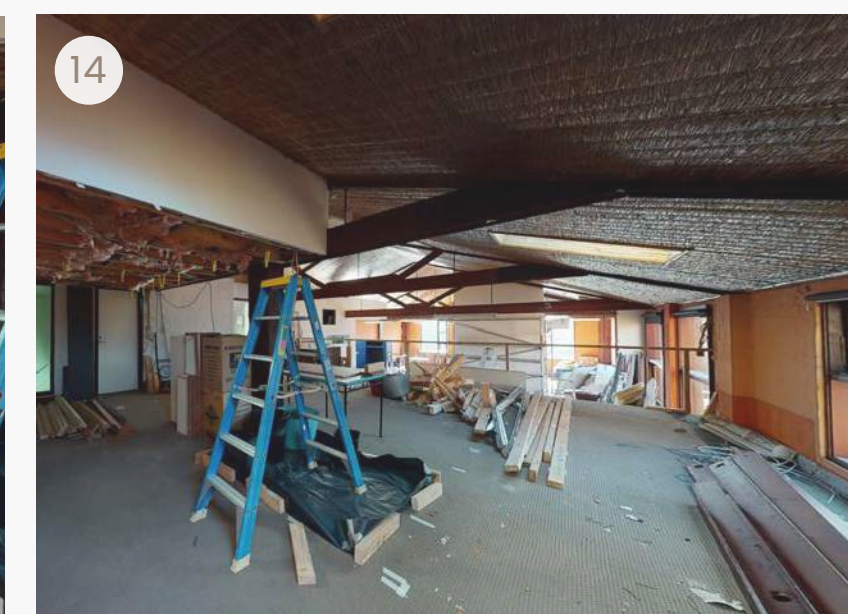
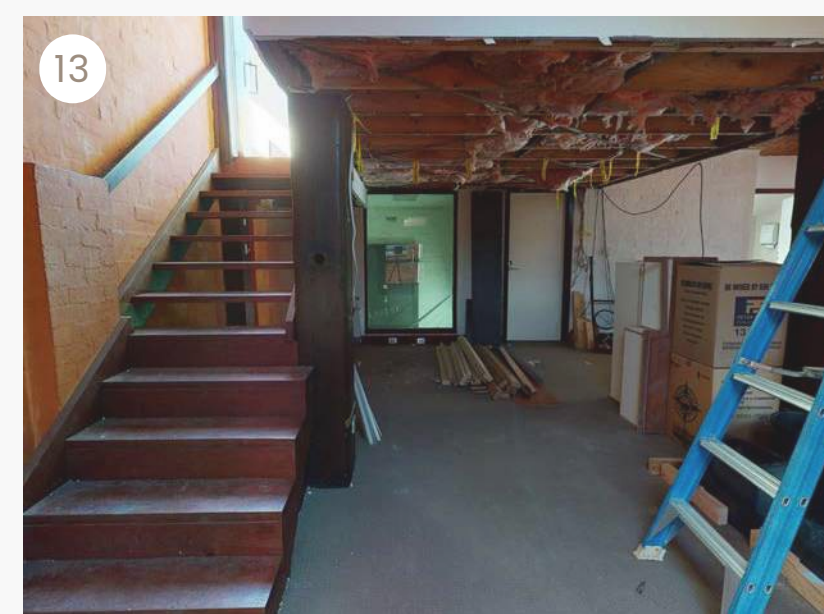
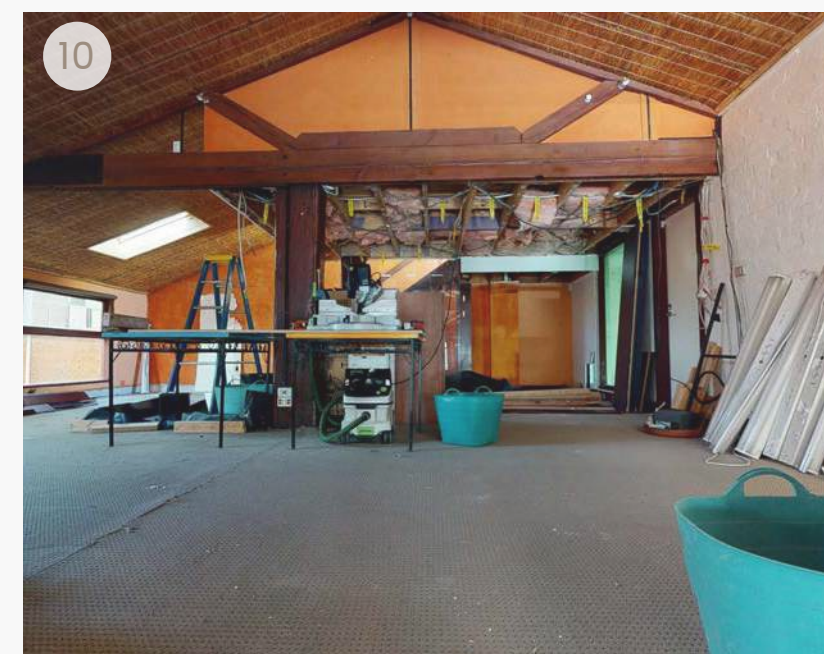
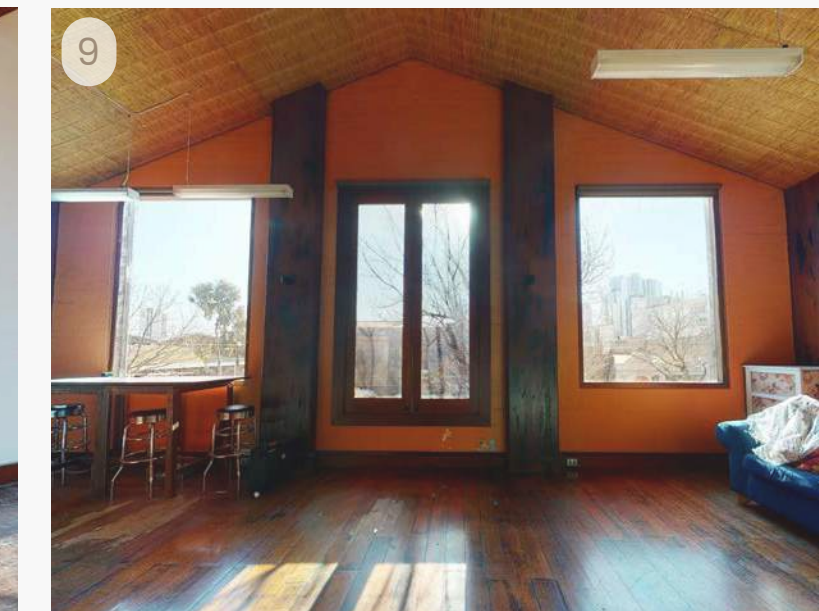
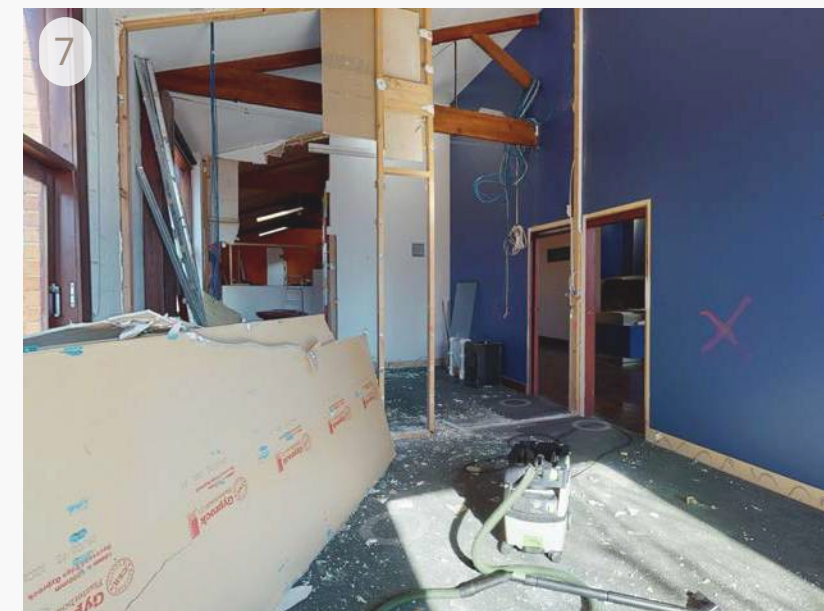
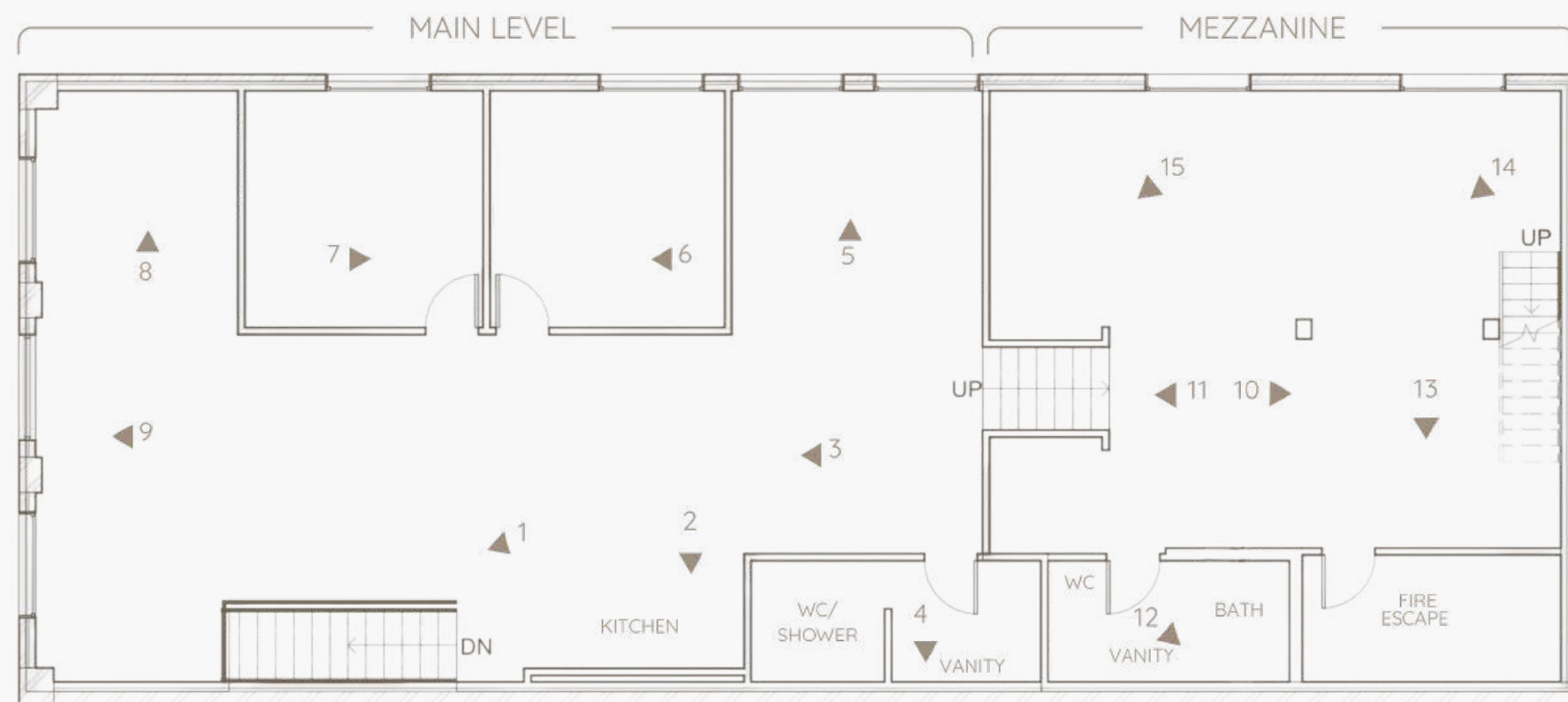
Project Considerations (Main Level):

- Restore existing timber floors, retain skylights, timber trusses, columns, plumbing and GPO locations.
- The front façade facing north maximizes natural light with less direct sunlight in the summer minimizing heat gain while maximizing direct sunlight in the winter maximizing heat gain.
- Pitched ceilings are comprised of stramit/thatching with grilles, while the shell of the space is painted brick walls.
- Fixed windows in the North side and East, skylights are installed in the kitchen, bathroom, and existing lighting fixtures include pendants, task lights and downlights.
- Kitchen must be placed between the West wall & centerline of trusses.
- Built-in joinery can be seen in the kitchen cabinetry, shower enclosures and vanity shelving. There are wall niches in the bathrooms.

Project Considerations (Mezzanine):

- Restore the existing timber floors, retain skylights, timber trusses, columns, plumbing and GPO locations.
- If stairs are to be relocated, must be 1m away from Eastern wall.
- Main sewage & plumbing on West wall.
- Fixed windows in the East, skylights are in the bathroom and mezzanine, and existing lighting fixtures include pendants and downlights.
- Bulkhead is higher than it seems, enough head height.
- Tenancy below, noise may transfer.
- No built-in joinery on mezzanine level, wall niches in bathroom.

Floorplan 1:100



Design Ideation



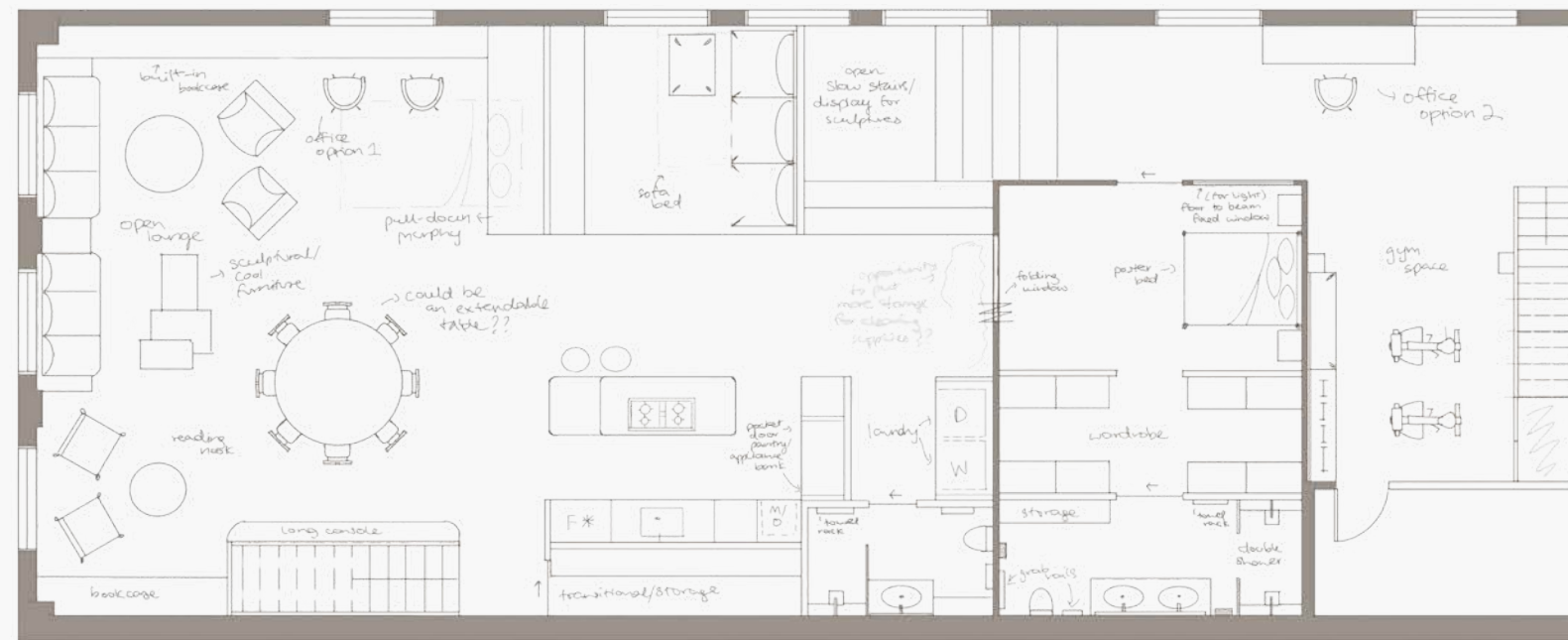
Spatial:

Exploring diverse spatial arrangements, communal areas are strategically positioned on the main level, while more private areas are situated on the mezzanine. Guided by the existing trusses and window placements, the goal was to accentuate spaciousness while maintaining a harmonious flow and balance throughout.

Selections:

The curated materials, fittings and fixtures are meticulously selected with sustainability and energy-efficiency as a priority. The eclectic mix encompasses a unique blend of the past and the present and reflects the clients' adventurous spirit.

Floorplan Sketch



Procreate Floorplan



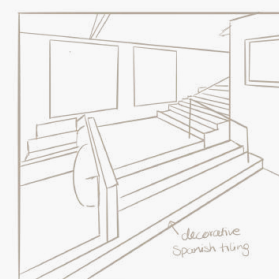
kitchen

dining

lounge

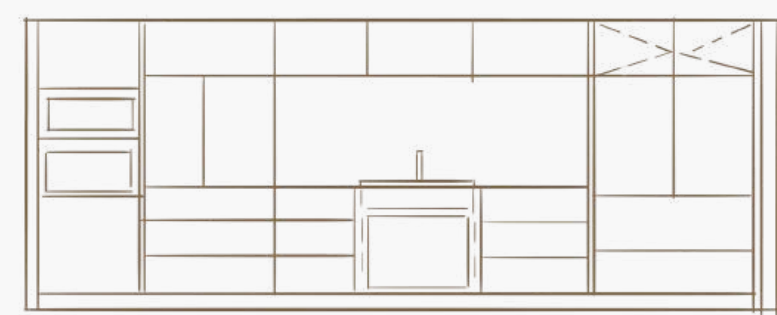


lounge cabinetry

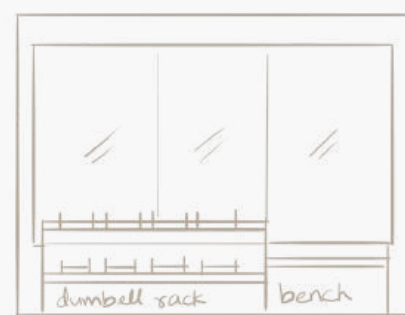


staircase

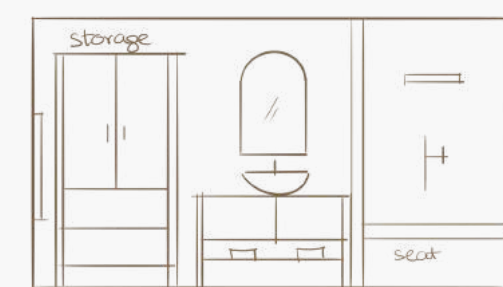
study & storage



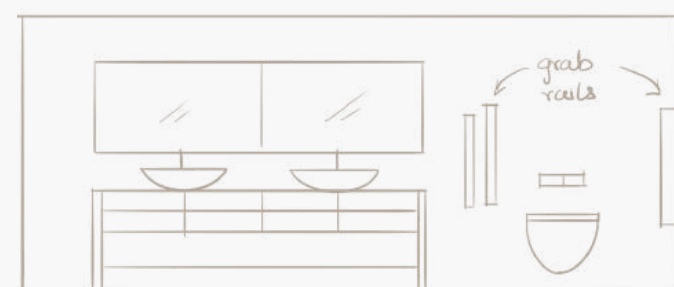
kitchen cabinetry



gym elevation



guest bathroom



ensuite bathroom

East Section



West Section



window from bedroom overlooking main level?

elevated lounge?



L-shaped stairs

fixed window for light transfer?



bed between trusses

walk-in wardrobe



A Contemporary Spin on
warm industrialism

Exploring the passage of time and culture, the materials and furniture have been carefully selected to facilitate a sustainable and sensible way of living.

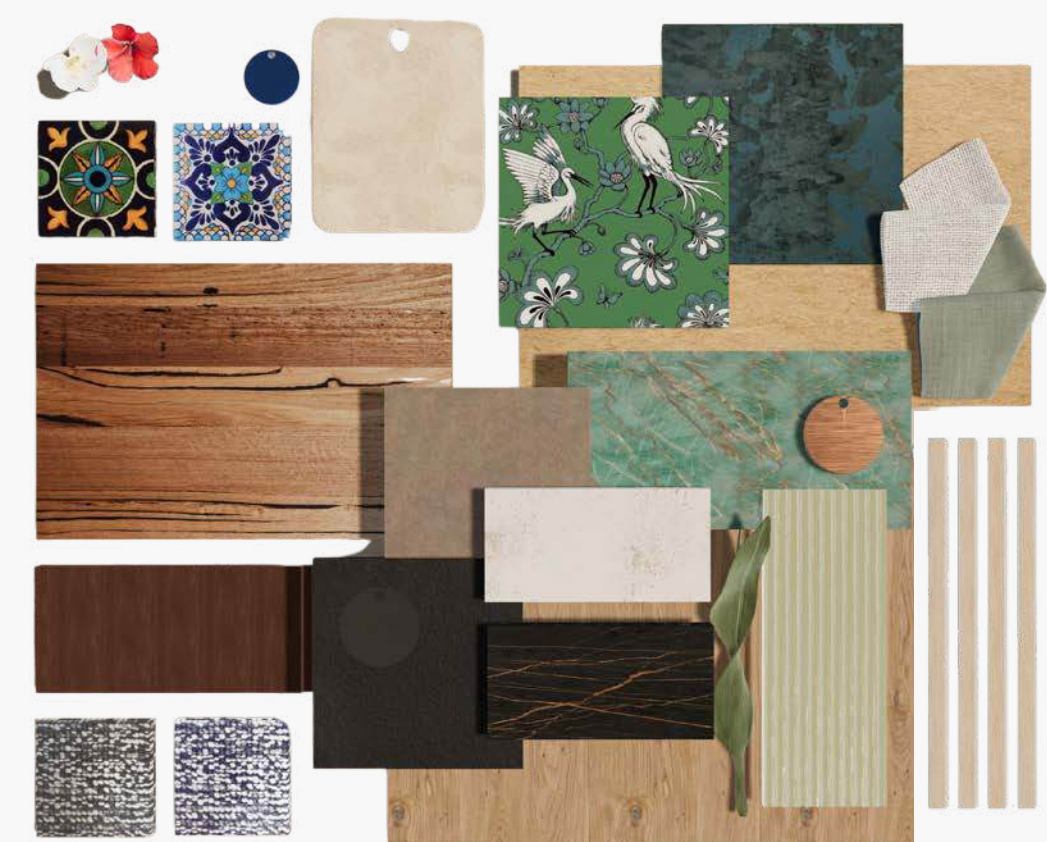
The path of travel from the entry to the rooftop embraces the same pattern as the bespoke L-shaped staircase leading up to the mezzanine. With lighter finishes as the base, distinctive wood graining and tactile wallpaper are paired with bronze, deep blue and gunmetal metallic finishes.

Rich hues of blues and greens help bring character and vitality into the space together with the warmth of timber and soft limewashed walls.

Floorplan 1:100



Materials Board

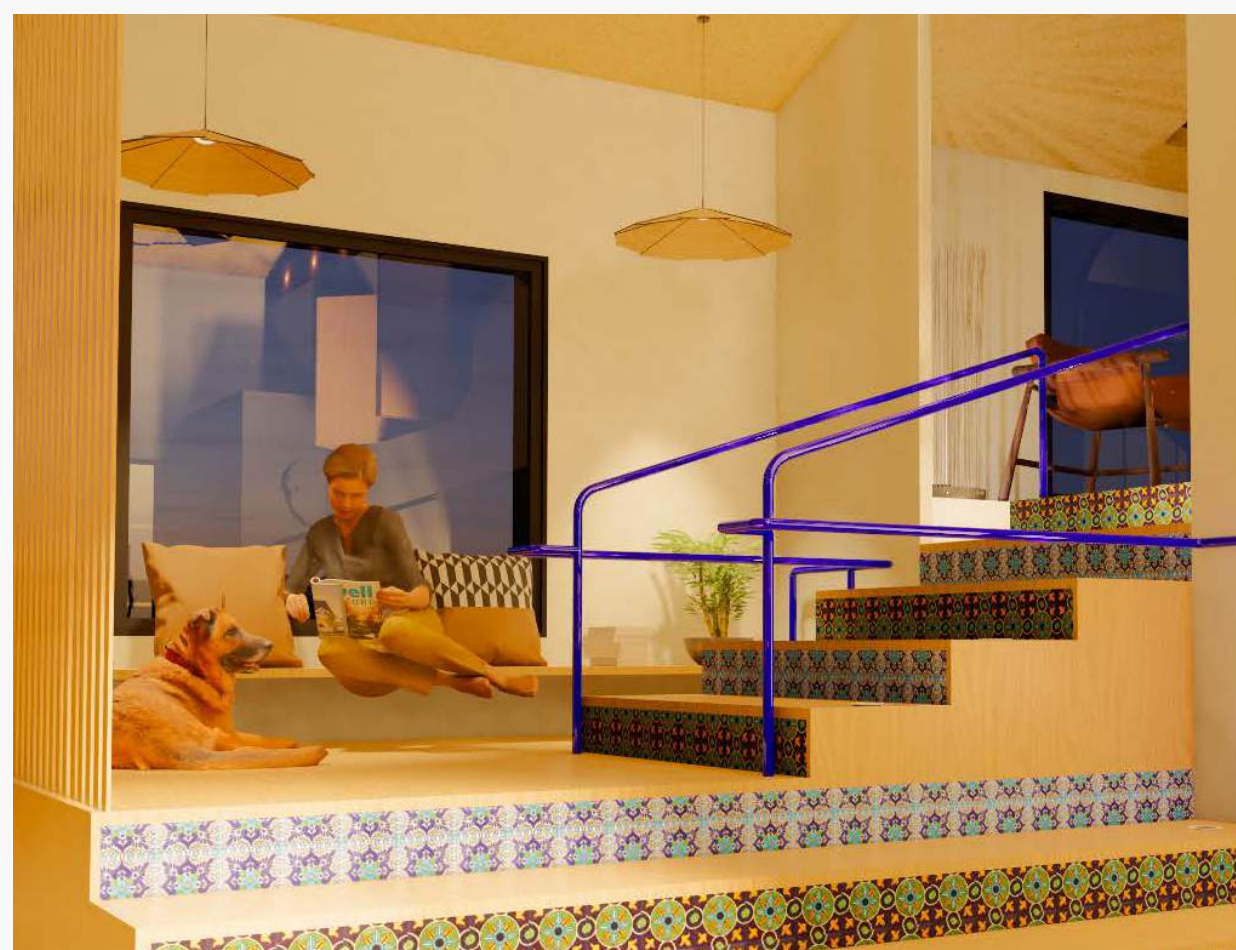




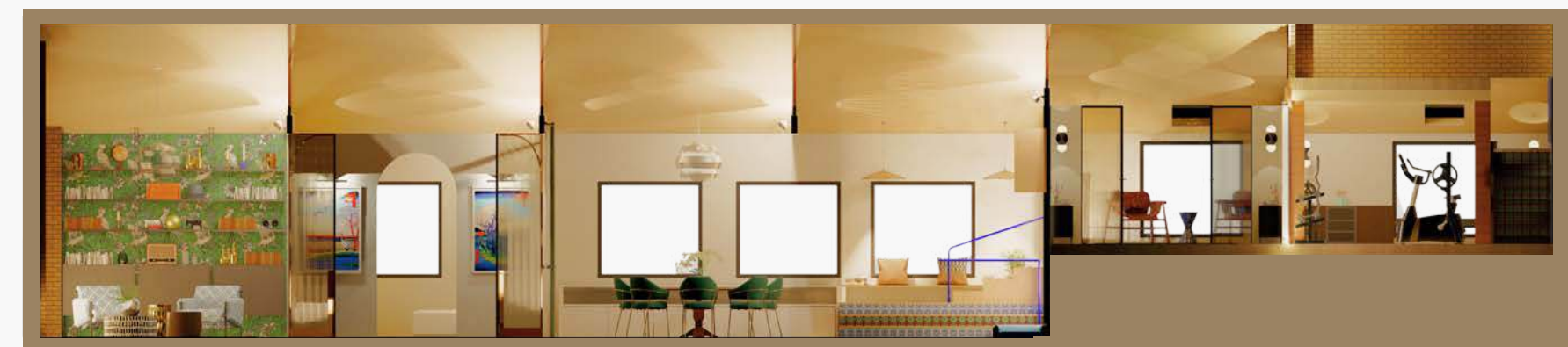
Designed for
lasting memories

Sense of difference is brought out by soft furnishings, upholstery prints, furniture and tiling. Seamlessly meeting the trusses, the fluted glass partitions and arched double doors help delineate spaces without compromising the flow of light and connectivity.

From the cosy reading nook to the expandable dining table, every corner of the home is thoughtfully curated for both large gatherings and intimate moments. More than just a place to live, the home is to be cherished for years to come.



East Section 



West Section 





Casis Living

Project Temporary Emergency Pods
Location Australia, Global
Software SketchUp, Enscape, Photoshop
Project Partner Anton Nestor Kolman

Objective: The goal is to propose an innovative and empathetic design catered towards communities affected by bushfires in Australia. Considerations include sustainability and accessibility, meeting physical and emotional needs, assembly and transportation.

Response: Casis intends to enhance community resilience with sustainable, adaptable and empathetic considerations. Rapidly deployable and demonstrating long-term livability, Casis promotes safety, dignity and sense of belonging with the potential to be deployed worldwide to aid communities facing various natural disasters and challenges.

Design Ideation

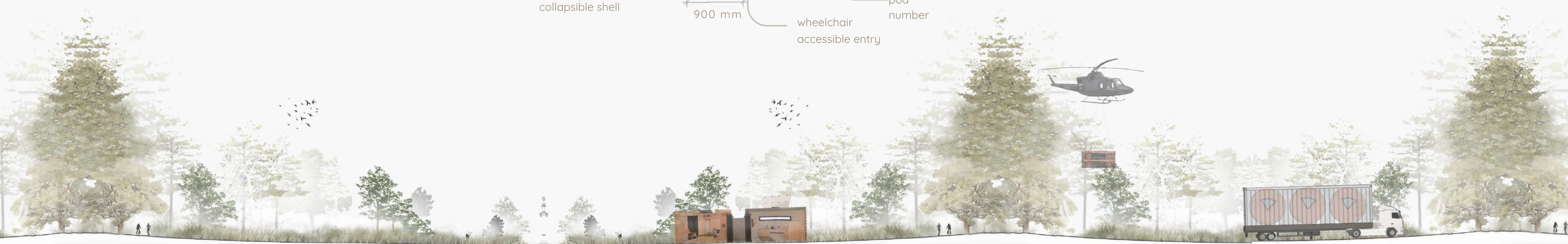
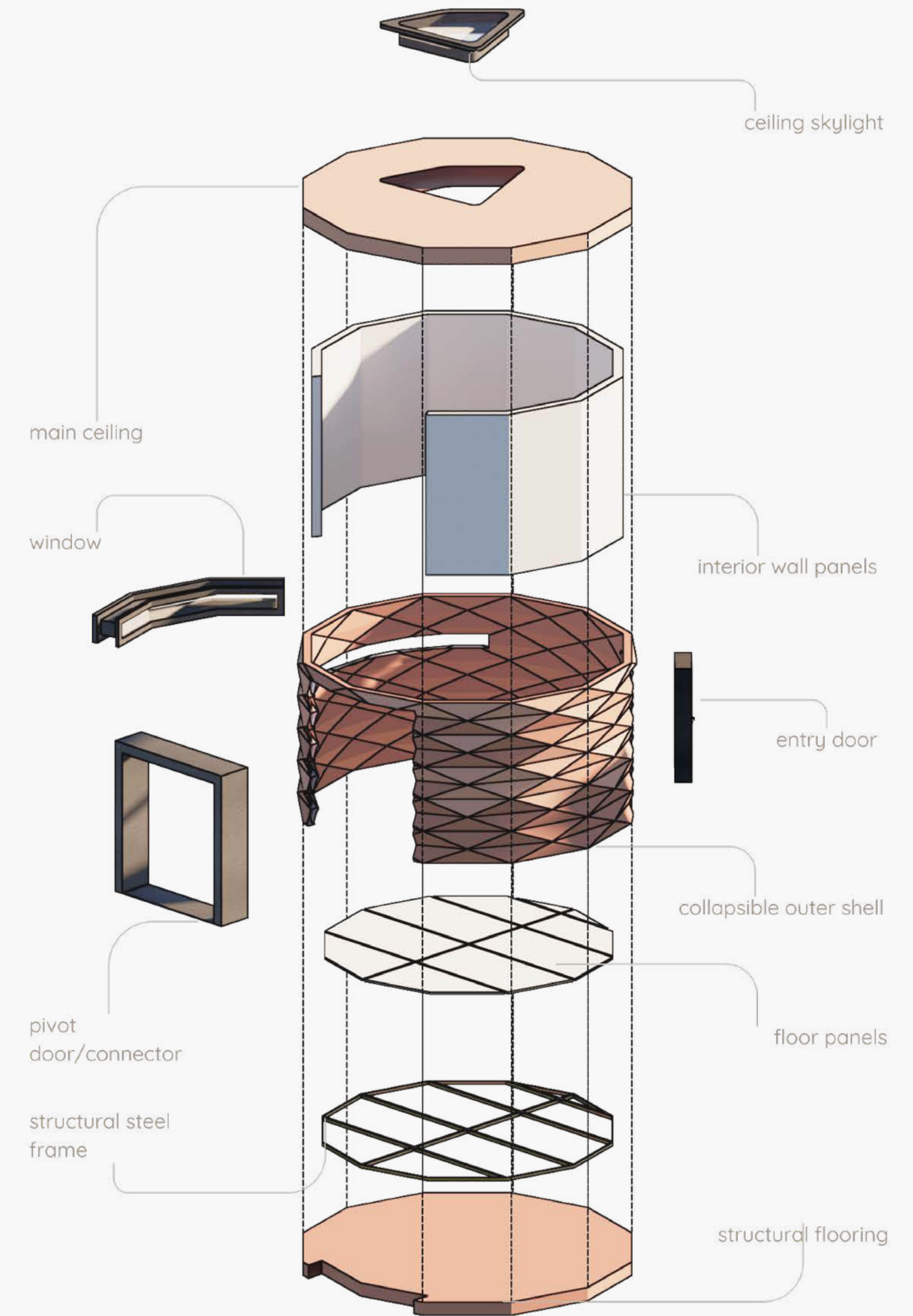
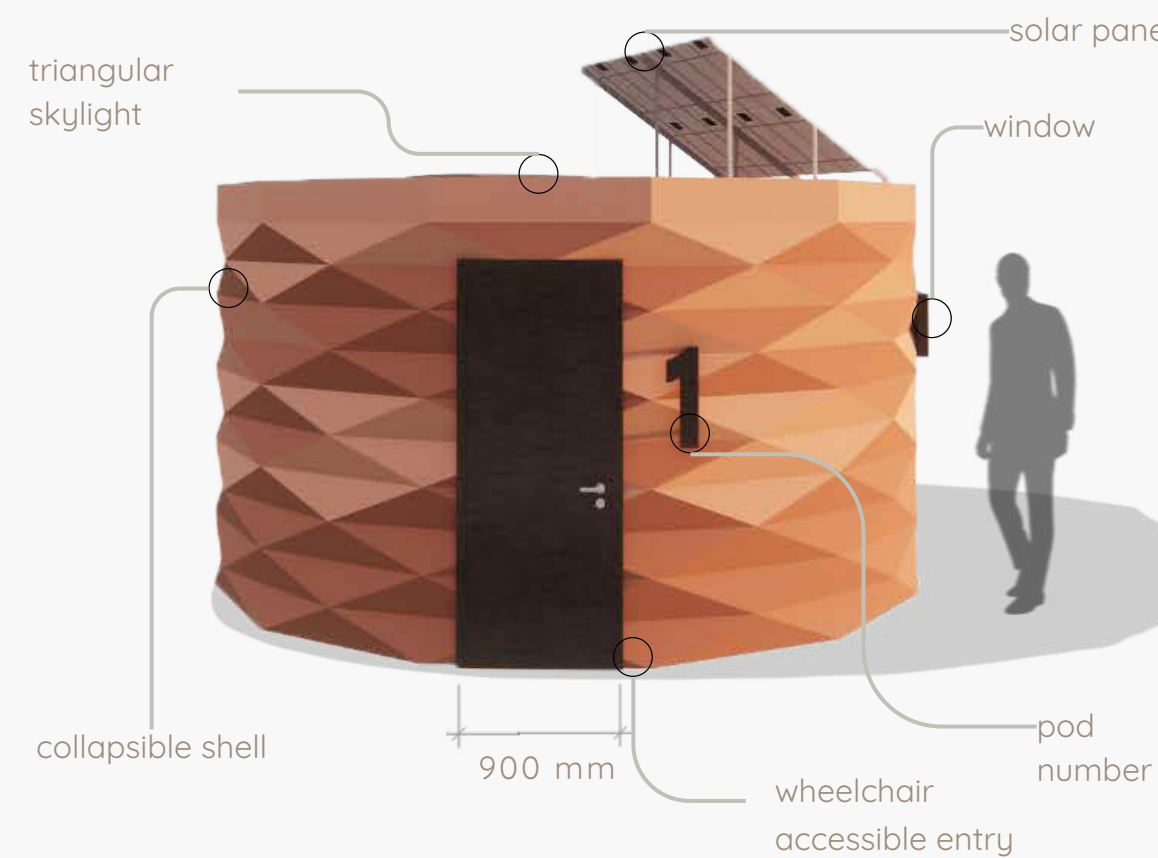


Concept: Driven by biomimetic design, the structure unfurls, unfolds and can be collapsed for transport. The colour palette is inspired by the deep bond Aboriginal Peoples share with all living beings and how plants tell stories of cultural connection.

Assembly: A majority of the construction and interior parts and elements will come prefabricated and allocated within the collapsed model to be assembled on-site.

Afterlife: The pods can be used as a shelter for the homeless and disaster relief for displaced communities. The sustainable materials being used can be biodegraded or shipped back to the manufacturer for them to be recycled or repurposed.

- Materials:**
1. BioMass Acoustic Flooring, Tarkett
 2. Painted Inner Wall Panels, Durranel
 3. Custom Collapsible Shell, Plaspanel
 4. Stainless Steel Flooring Frame, Atlas
 5. Black Steel Door Frame, Atlas
 6. Shou Sugi Laminate, Laminex
 7. Natural Plywood Joinery, Maxipanel
 8. TrueScale Benchtop, Laminex



Design Process



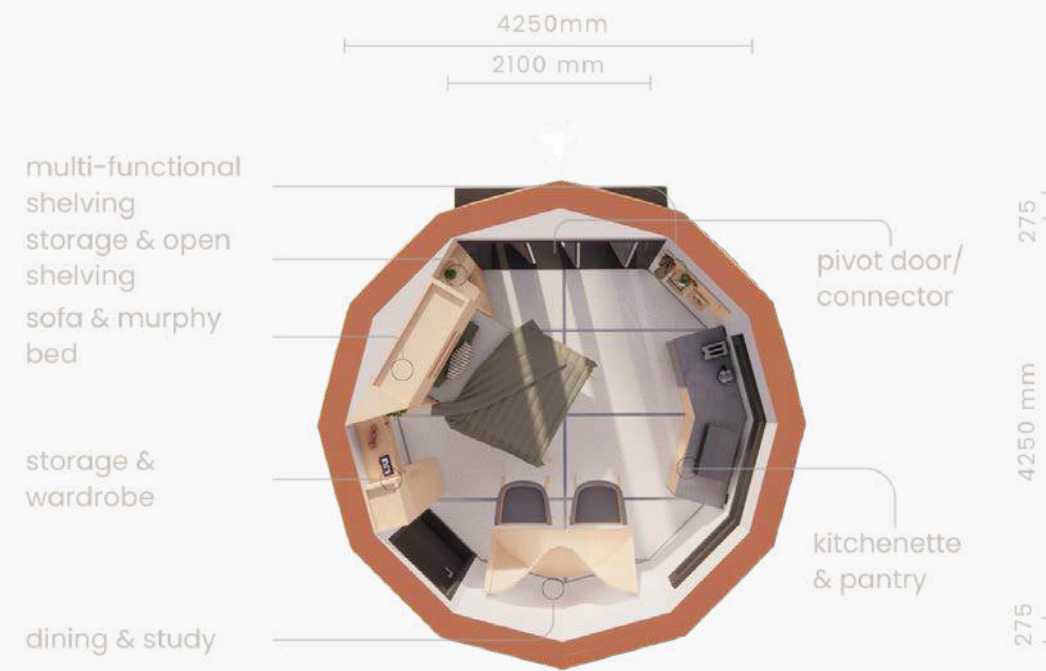
Concept:

Casis, derived from the word encase, aims to embrace and cocoon its occupants. The pivot doors can be modified into an external connector to attach one pod to another to accommodate three or more occupants. Clever storage, modular furniture and dry kitchenettes provide flexibility and adaptability to the needs of occupants and their lifestyles.

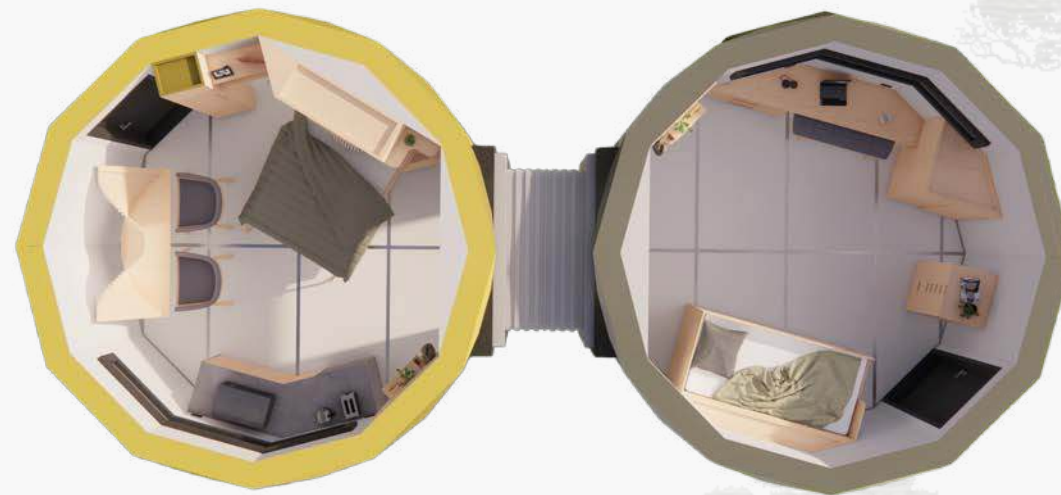
Elements:

Interior fit-outs highlight the beauty of natural, durable materials, placing emphasis on recyclable and recycled content, as well as weather-resistance. Natural lighting and ventilation are maximised to provide a bright and welcoming environment.

Central Pod Floorplan



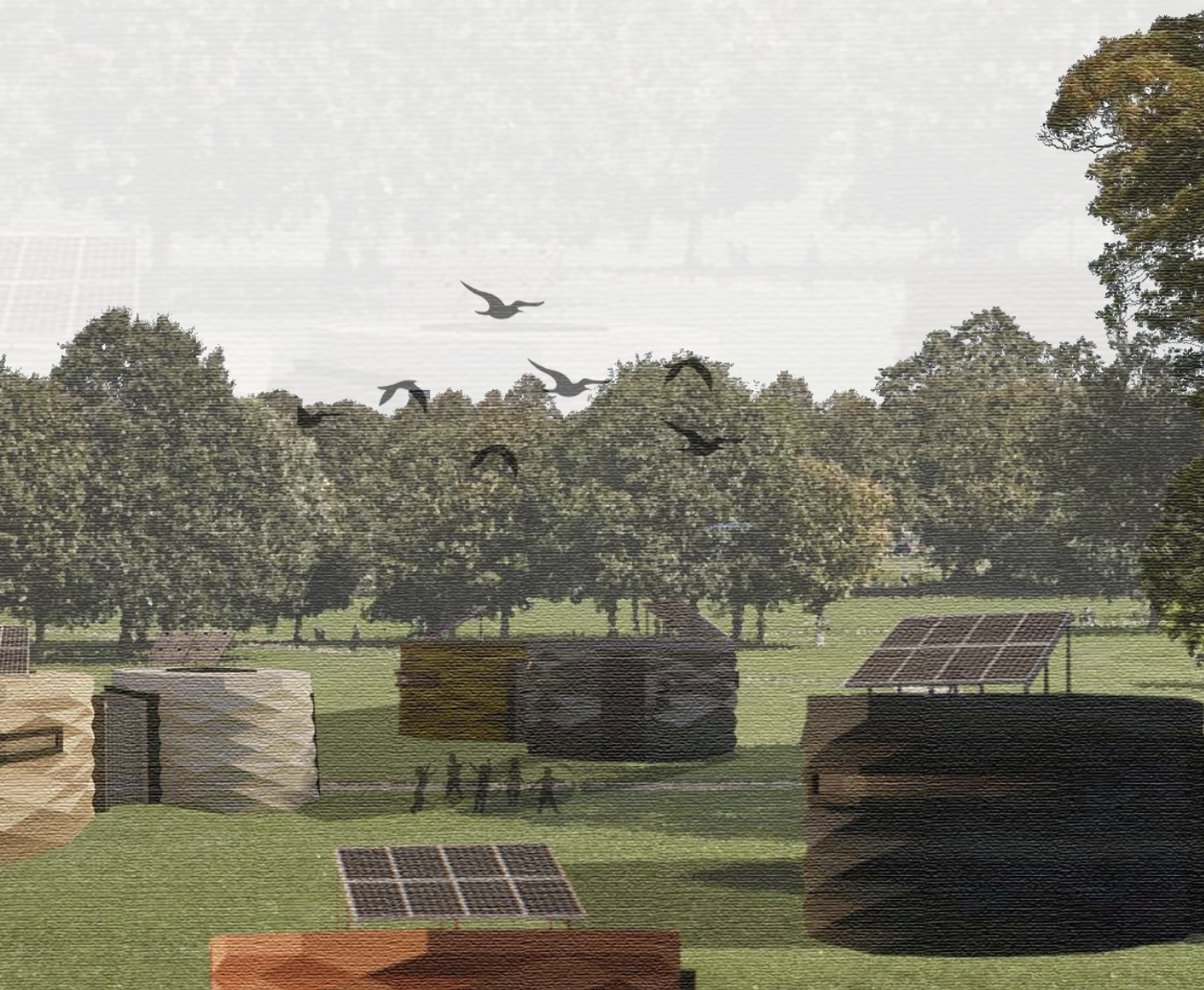
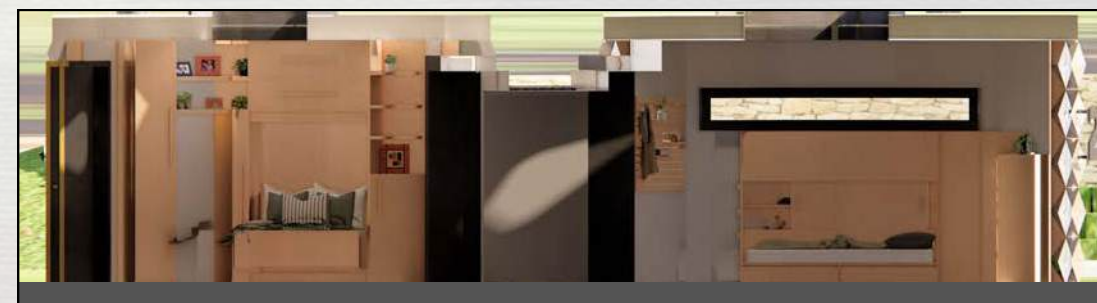
Family of Four Variation



Family of Six Variation



Family of Six Section





origins

80 COLLINS

Project

Location

Software

Restaurant and Bar

80 Collins, Melbourne CBD

Revit, D5 Render, Filmora

Objective:

Following a new venue concept for the Scott Pickett Group, the objective is to commemorate the client's culinary journey and the Group's established venues. The Scott Pickett Group prides themselves on their respect for local growers and producers and fostering connection between the art of gastronomy and people.

Response:

Embracing the essence of culinary heritage and a shared passion for exceptional dining experiences, Origins intertwines rich culinary traditions with a contemporary edge. Inviting patrons on a sensory journey, the design takes a daring yet purposeful approach to offer an upscale yet relaxed ambiance. Representing a new chapter of the Group's culinary journey, Origins aims to respectfully reflect the Group's values of authentic hospitality.



Design Ideation

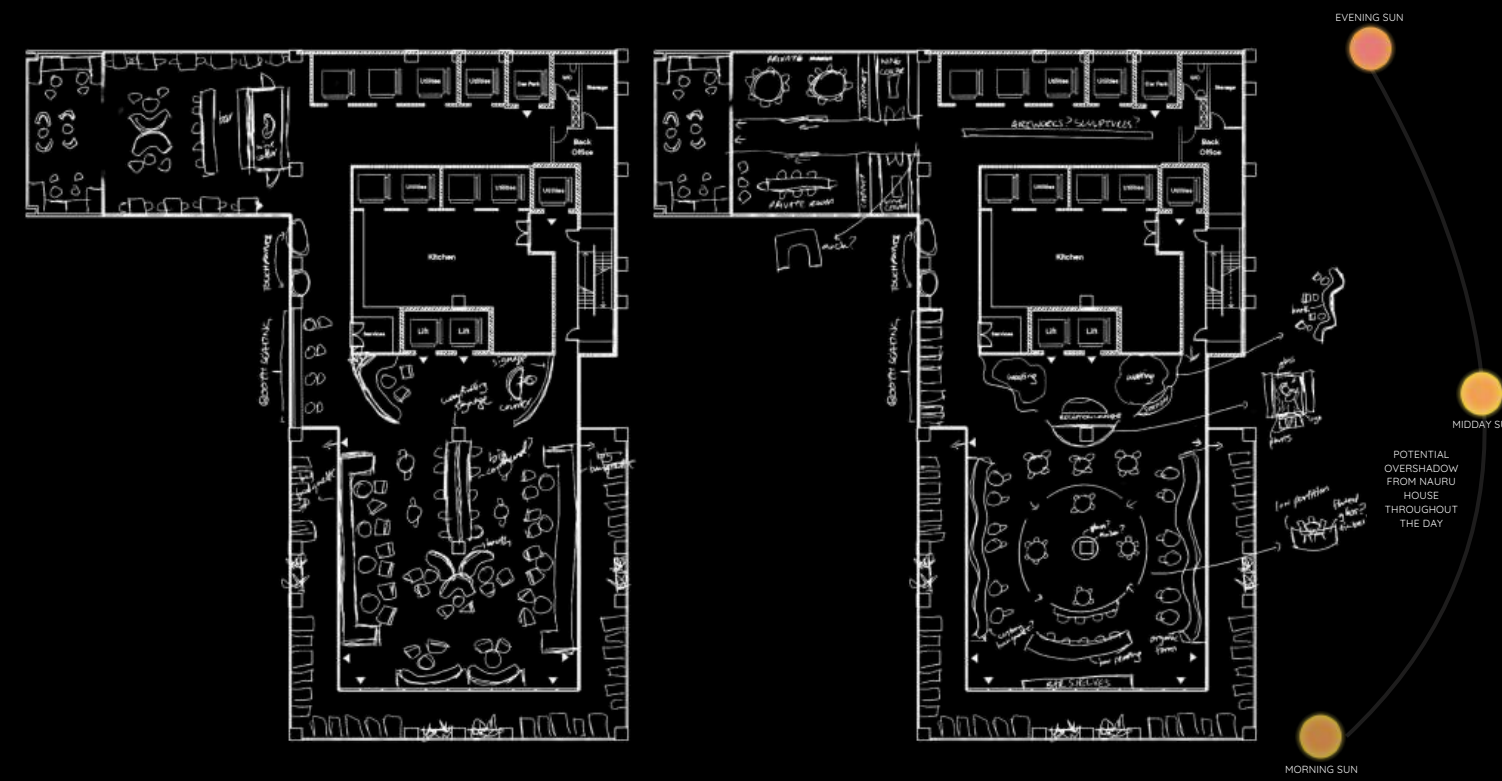
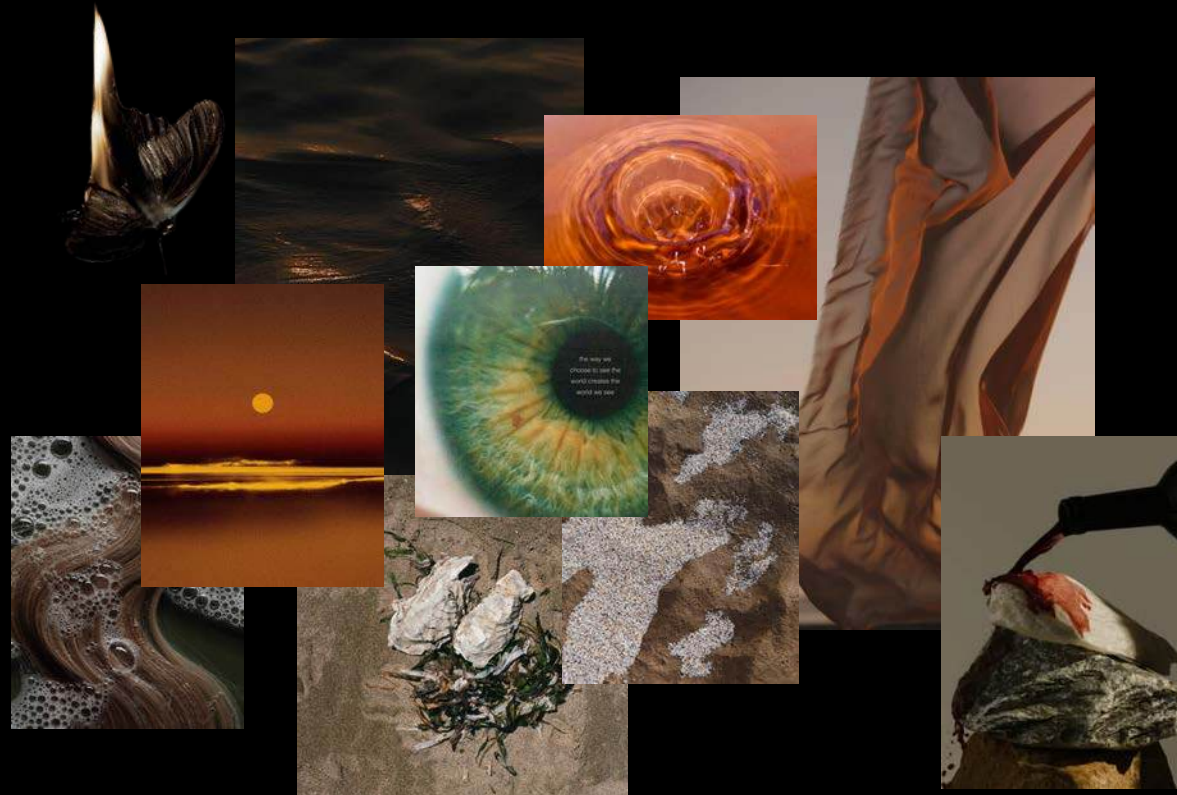
As patrons are seeking dining destinations that prioritise memorable experiences, the design is heavily influenced by Pickett Group's deep connection to the environment and local growers and producers. Infused with experiential and ethereal touches, the design aims to exude warmth, vibrancy and energy.

Characterised by floor-to-ceiling glazed walls and an impressive ceiling height, the spatial planning explores concentric, organic and symmetrical forms. There is a symbiotic interplay between floor finishes, seating arrangements and bespoke ceiling features to ensure a captivating and meaningful experience.

Fueled by fiery passion, adventure and charisma, the branding and graphics for the venue pays tribute to the Group's spirited approach. While the interwoven logo captures the artistry of diverse culinary inspirations, a sumptuous and rich orange serves as the primary colour.

Mood & Colour Story:

"The food we cook has a sense of purpose and place and is inextricably linked to our environment."



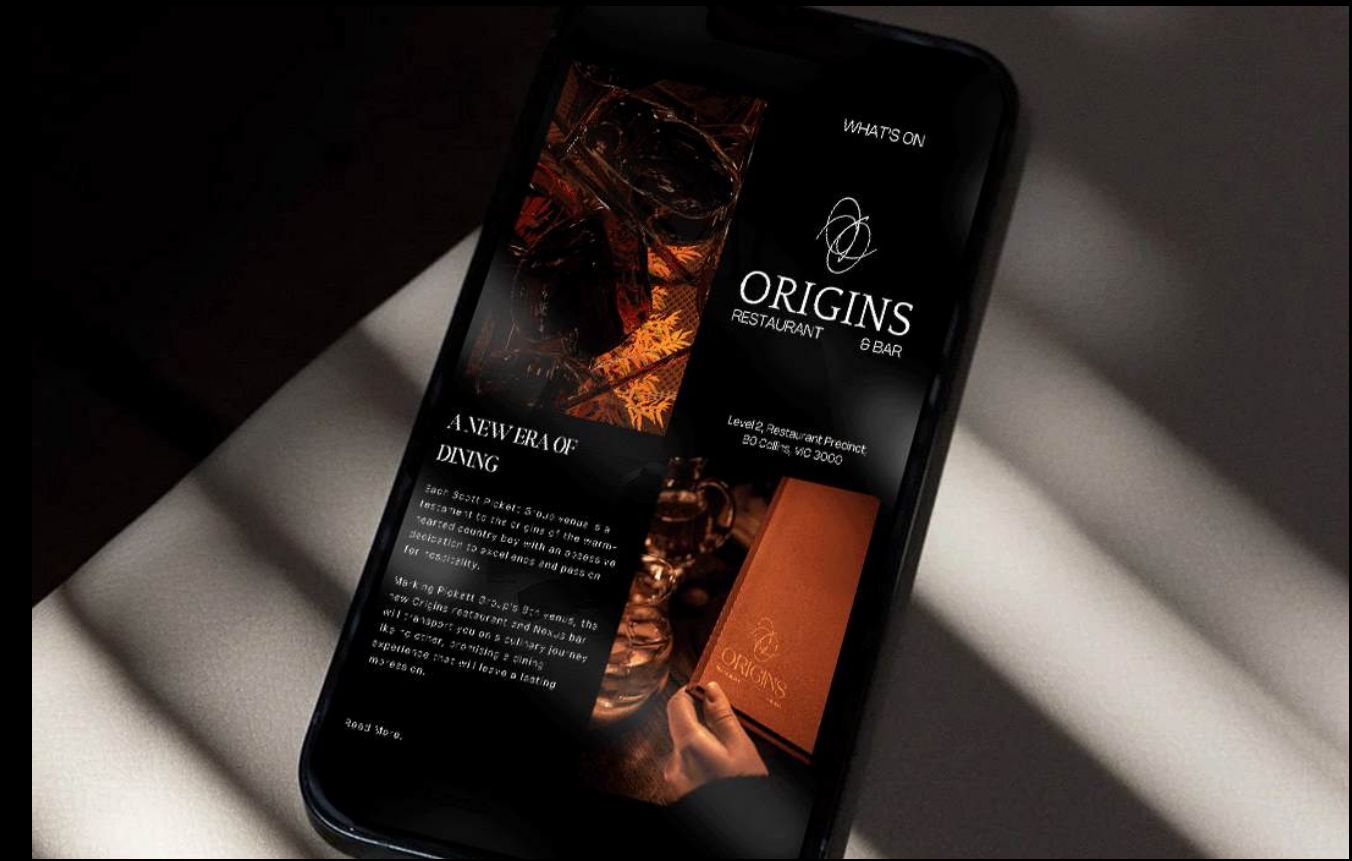
Floorplan 1:200



Elevation: Retail, Reception & Restaurant



wine cellar | retail | reception | restaurant



Reception

Aiming to provide an alluring atmosphere, patrons are welcomed into a warm cocoon. Maintaining a sense of spaciousness and grandeur, patrons are able to wait comfortably. The spatial planning provides a seamless connection between the retail and restaurant, minimising traffic congestion for both patrons and service staff, ensuring accessibility and circulation.

Materiality consist of bespoke finishes with textural interest and durability. Underscoring a commitment towards quality over quantity, the selections allow for ease of maintenance and longevity without compromising on quality or aesthetics. Difference in floor finishes facilitate subtle wayfinding throughout the venue.



Reflective Ceiling & Custom Installations
Microcement Render
Wood Laminate
Vinyl Flooring
Terrazzo Furniture
Velvet & Faux Leather Upholstery

Retail & Wine

Serving as both a retail and meaningful transition between the restaurant and bar, the dedicated space honours the team behind the culinary magic. Strategically designed, Pickett Group's specialty and gourmet food products and Scott Pickett's cookbooks are showcased to foster a deeper appreciation for gastronomy and connection to the Group's culinary world.

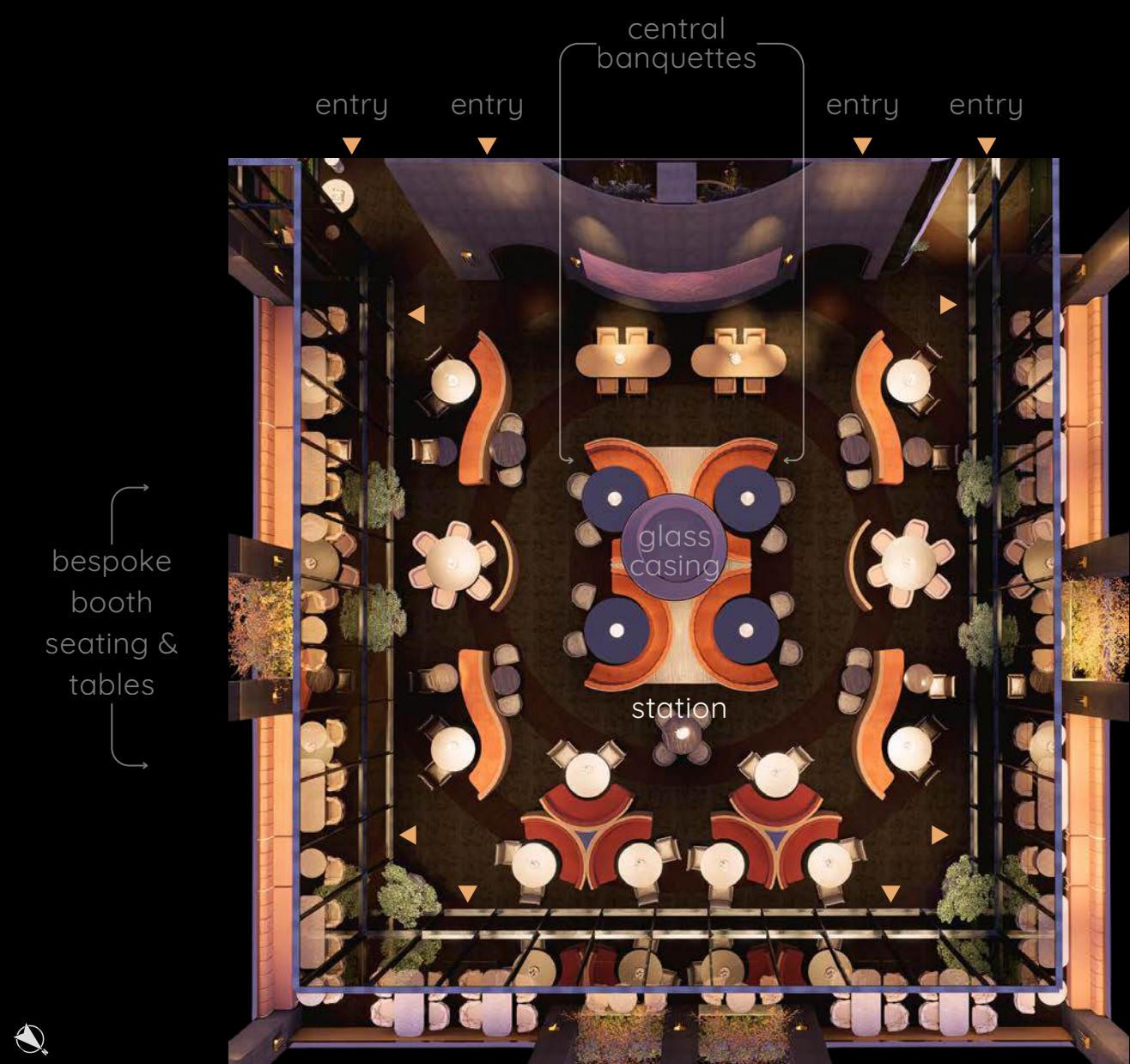
From the carpark entry, patrons are welcomed through the wine cellar. To prevent a corridor-like atmosphere, a coved ceiling design with curved lighting strips has been incorporated. The reflection of these lights on the ceiling creates the illusion of expanded space, enriching the overall ambience.

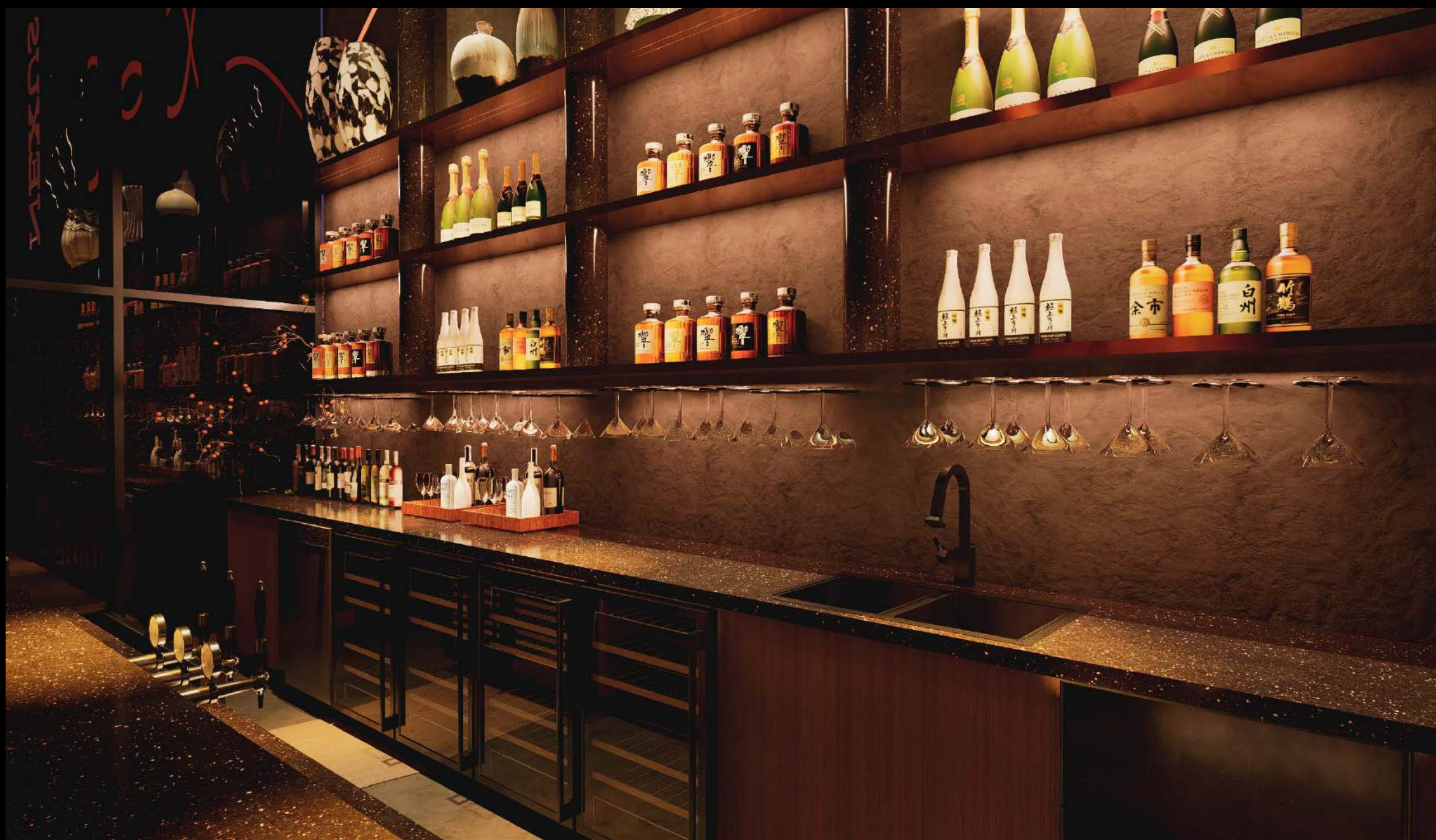


Restaurant

Able to seat more than 100 patrons comfortably, the main dining space consists of a variety of seating arrangements echoing the rhythmic rippling out effect of the floor finishes. Fluidity, softness and grace is translated through materiality, colours, textures, curved forms and ambient lighting.

The anchor of the space is the glass casing feature for the existing column. The ceiling hosts levitating glass-blown and blossoming pendants, as well as bespoke Indigenous woven panels which will be made in partnership with the Tjanpi Desert weavers. Bespoke banquettes and floor finishes are carried out onto the terrace.

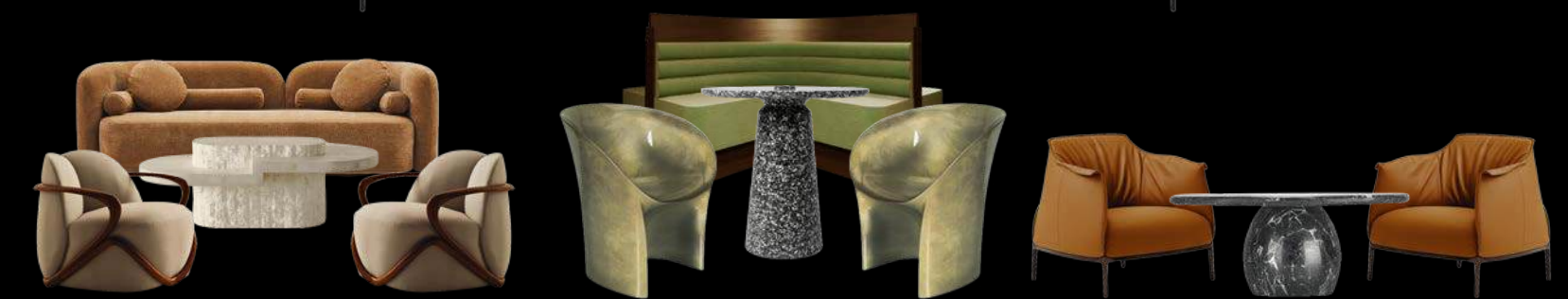
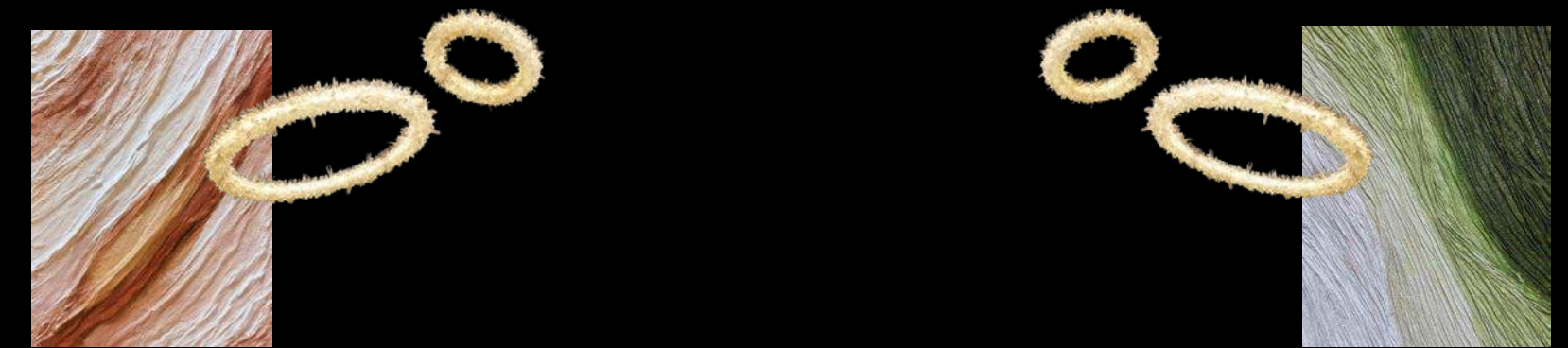




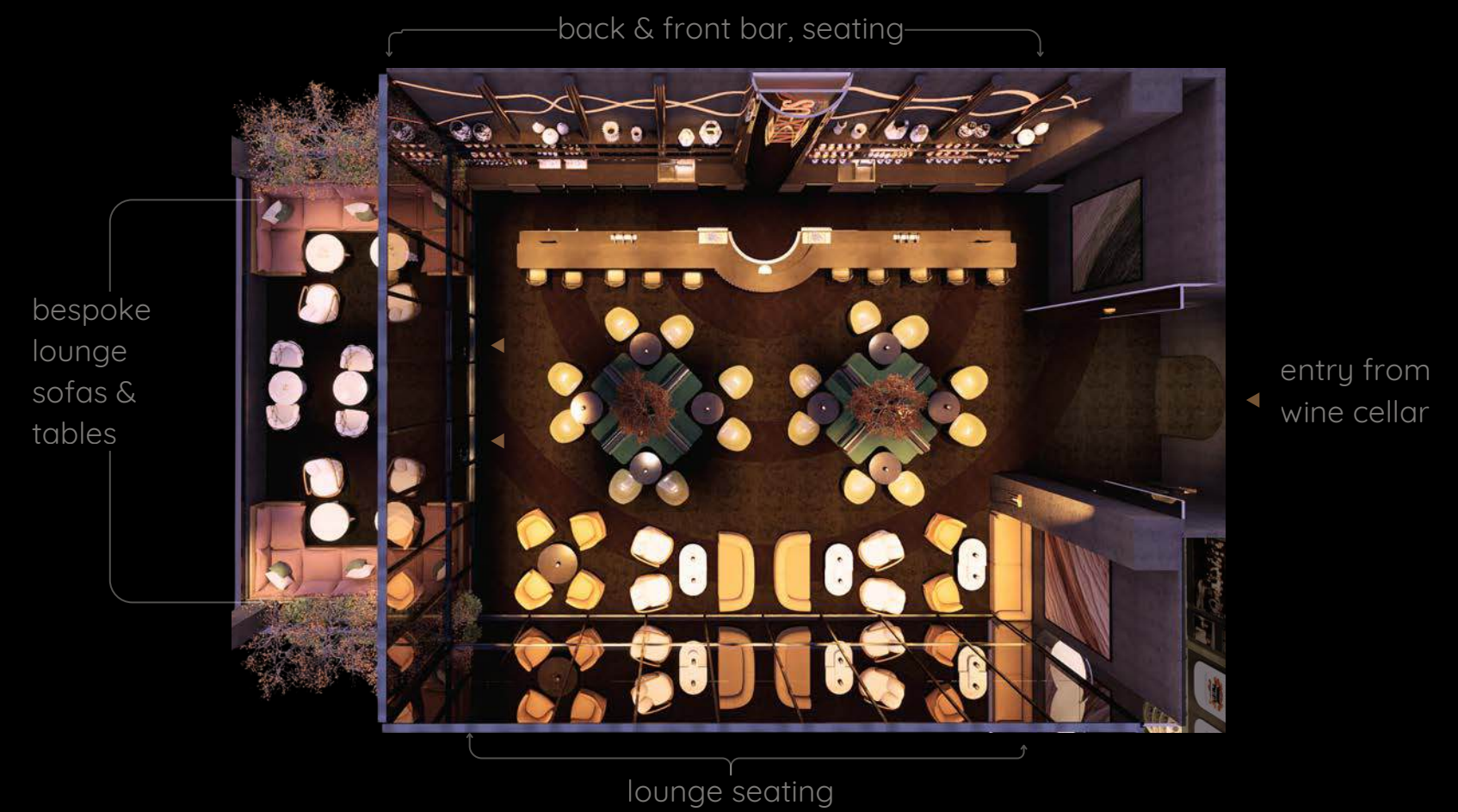
Bar & Lounge

Taking a more extra-terrestrial approach with earthly inspirations, pools of warm lighting, illuminated signage, striking alcohol displays and bespoke seating characterise this space. With an emphasis on layers of texture and organic forms, Nexus Bar plays on the concept of a pivotal gathering spot.

Enhancing the ethereal feel of the space, the furniture and lighting selections encapsulate a glowing energy, with pearlescent finishes, playful terrazzo, sculptural seating and handcrafted tables. The oversized highly textured artwork creates an illusion of movement, adding onto the sensory experience.



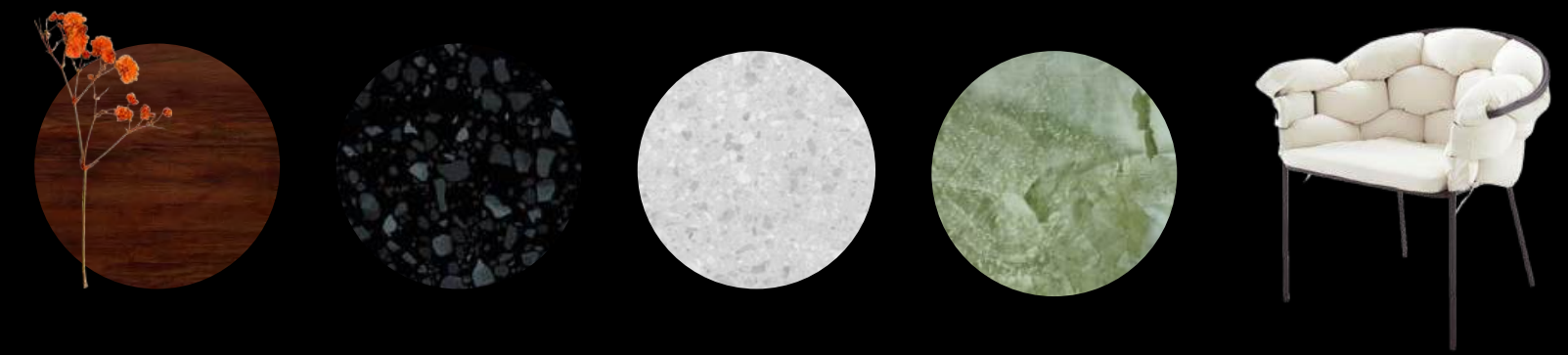
Floorplan 1: 100



The Terraces

The outdoor spaces are designed to accommodate more patrons. While the restaurant terrace spaces offer more dining arrangements, the bar terrace offers a place to unwind.

Carrying the floor finishes, lighting design and selections through to the outdoor terraces, the design is a holistic approach in reflecting the lively energy of the cityscape.





WALKTHROUGH



Ace Hotel

MELBOURNE

Project

Location

Software

Hotel Design

Collingwood, East Melbourne

Revit, Enscape

Objective:

Taking cues from the Ace Hotel Group's emphasis on hyper-localism, the objective is to capture the essence of Collingwood and the broader Melbourne community. Melbourne's diverse culinary, artistic, and multicultural landscapes are integral in authentically fostering a sense of belonging and connection for both locals and visitors alike.

Response:

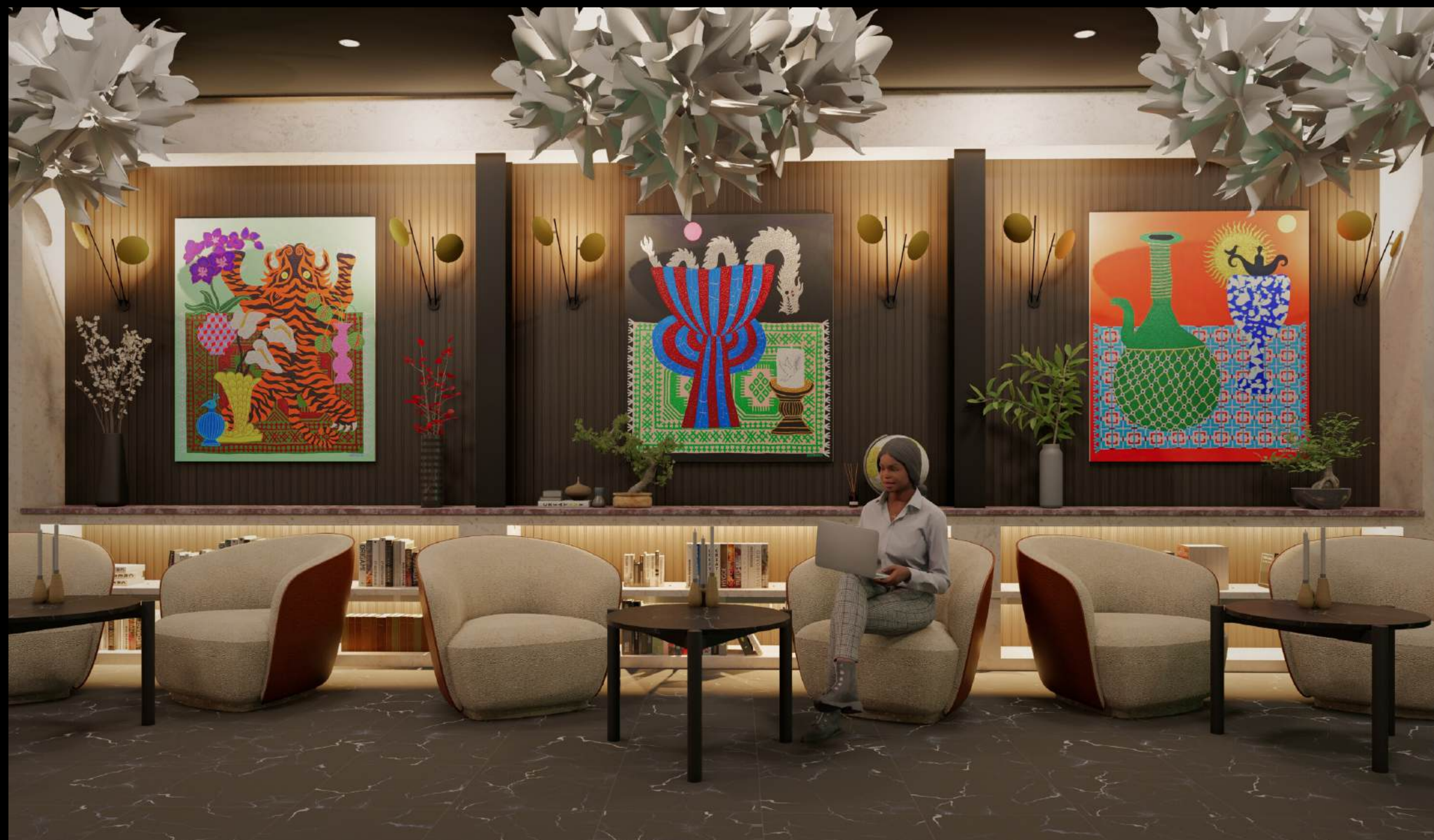
The new boutique hotel is poised to become a cherished gem in Collingwood in celebration of Melbourne's East and Southeast Asian diaspora. Drawing parallels from bustling streets of Asia and lively energy of Melbourne, the boutique hotel design promises an unforgettable and impactful experience.



Hotel Lobby

Setting the tone for the hotel, the lobby design sets a captivating first impression, reflecting the Collingwood area. The layout promotes an effortless flow of movement, guiding guests intuitively towards the reception and lounge. Art covers the walls and ceilings, infusing energy and character to the space.

The mix of ambient and statement lighting fixtures create a welcoming atmosphere, while furniture and material selections foster relaxation and ease. All the selections are curated with guest comfort and experience in mind, providing a lively prelude to the journey that lies ahead.



- Ceiling & Wall Murals
- Graphic Wallpaper
- Stone & Marble
- Renewable Cork Surfaces
- Timber Slats
- Linen Upholstery
- Sheer & Velvet Drapery
- Dulux Wall Paint



Reception Elevation 1:100



Lounge Elevation 1:100



Floorplan 1:100



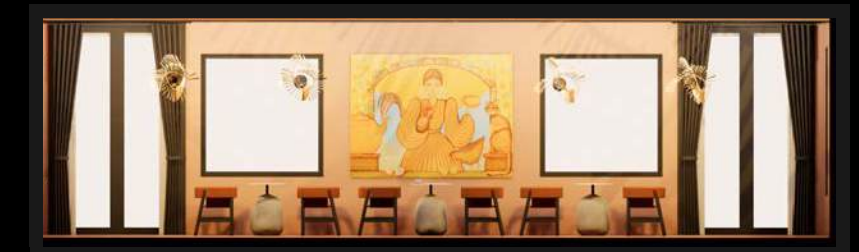
Tea and Art

The teahouse and art gallery serves as a gathering place for cultural exchange and creative workshops and community engagement. With a focus on celebrating shared experiences and contemporary works of East and Southeast Asian artists, the space aims to foster a deeper understanding and appreciation of East and Southeast Asian cultures and their influence on Australia's cultural landscape.

The space is characterised by rich terracotta hues, bespoke wooden joinery and expressive furniture pieces. These design elements help create a rejuvenating environment, enhancing overall guest experience and promoting community engagement.



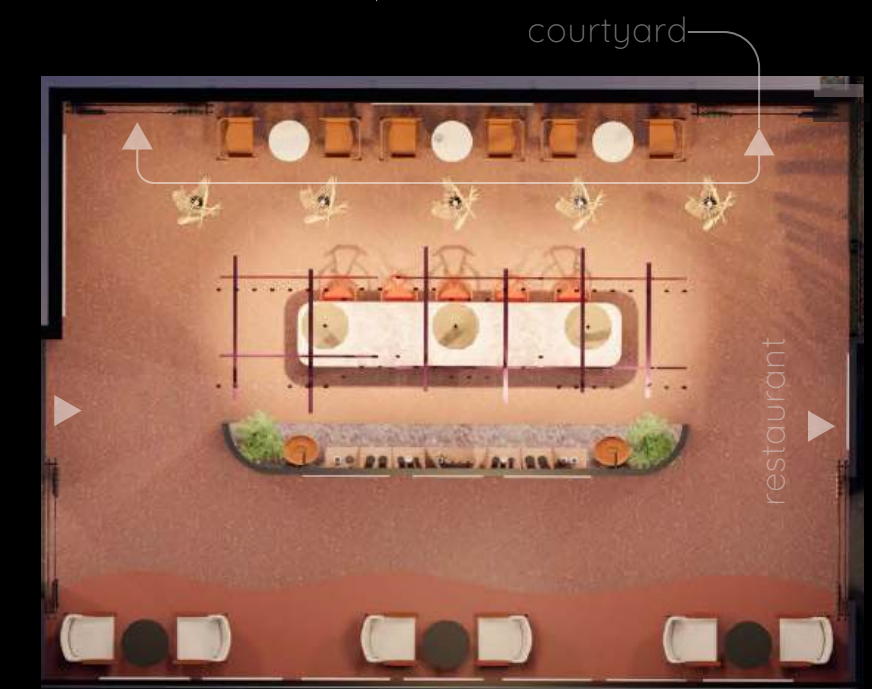
Seating Elevation



Teahouse Elevation



Floorplan 1:100



Dine & Drink

Inspired by the natural elements of water and fire, the Asian fusion restaurant encapsulates the rhythmic streetscapes of East and Southeast Asia and Melbourne. A visual feast for the senses, the resident of the Artist in Residence program, Creature Creature Studios' works are the driving force behind the design.

The murals by Creature Creature Studios instill life and vibrancy into the space, while the selected materials, furniture and lighting accentuate the sensorial atmosphere. The layered interplay of the design elements foster a seamless connection between the artistic vision and enriching experience.

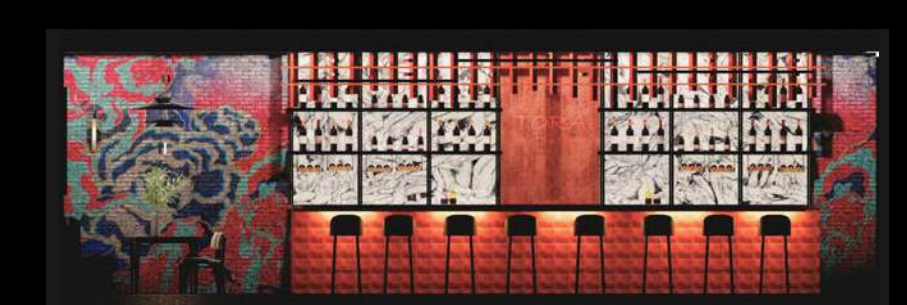


- Wall & Ceiling Murals
- Chidori Joinery
- Marble & Stone
- Wood Laminate
- Sheer & Velvet Drapery
- Graphic Tiling
- Dulux Wall Paint

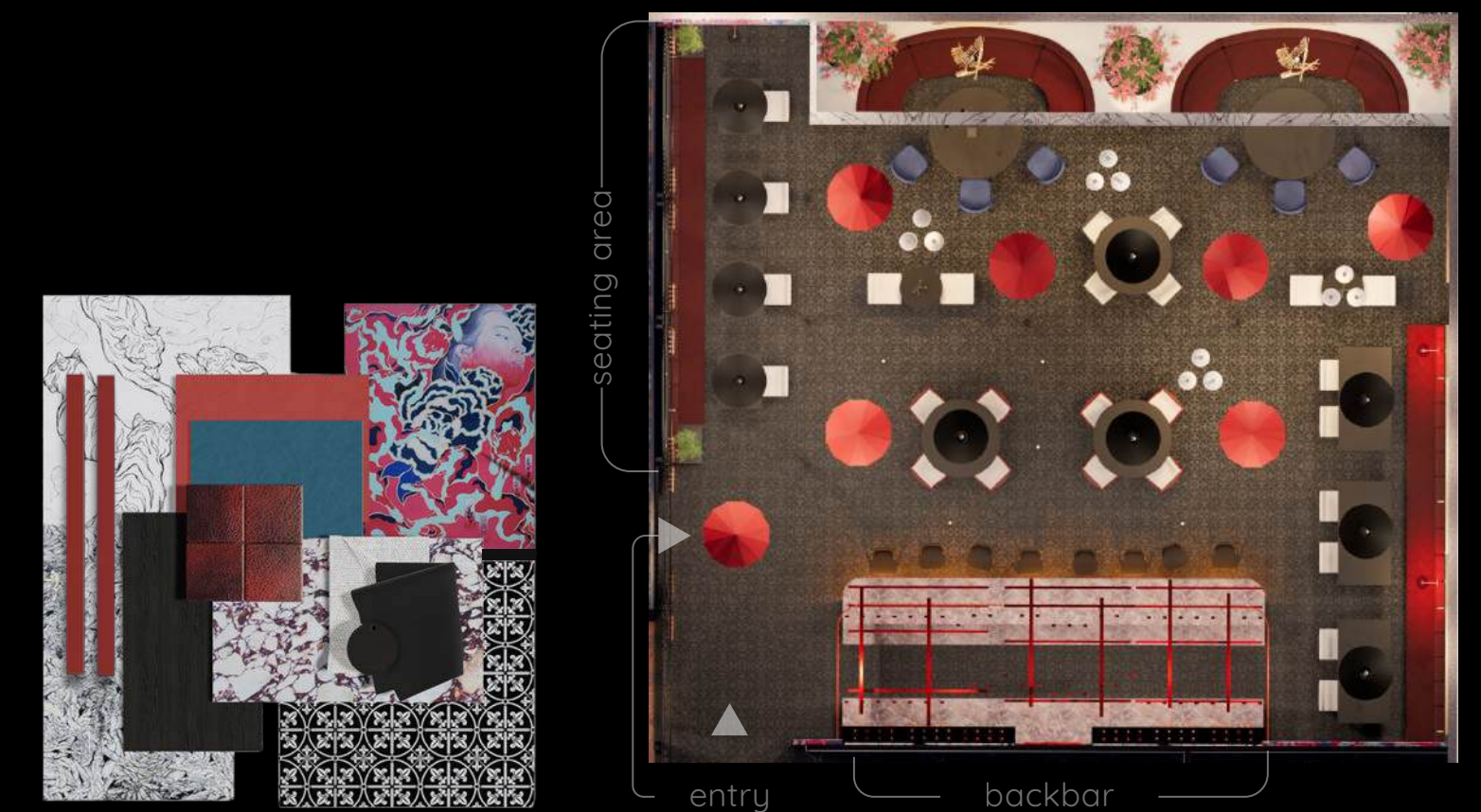
Seating Elevation



Bar Elevation



Floorplan 1:100





WALKTHROUGH



ACE HOTEL

Emerge Exhibit



Project Virtual Exhibition
Location Collarts Interior Design
Software Revit, D5 Render, Photoshop, Filmora

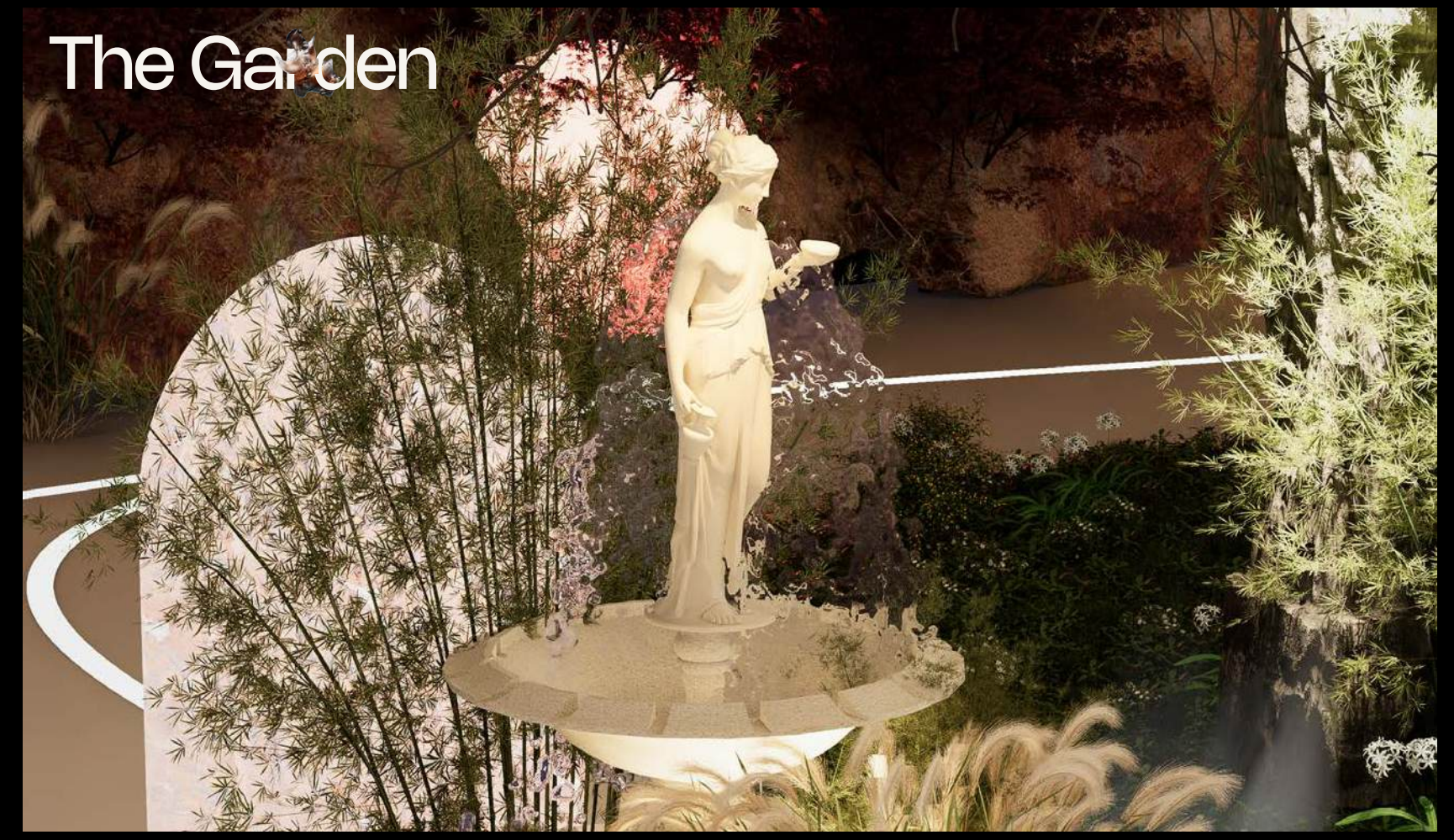
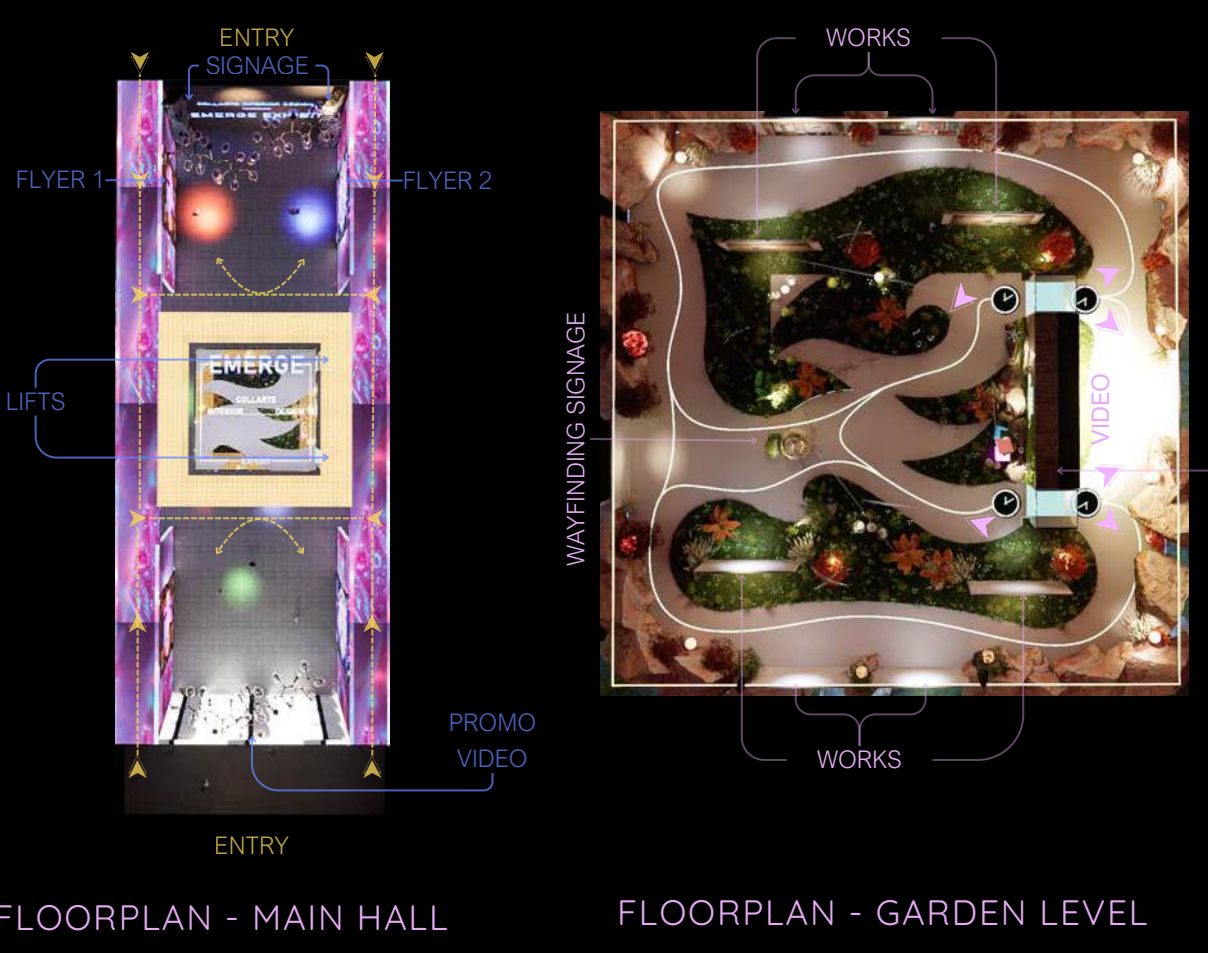
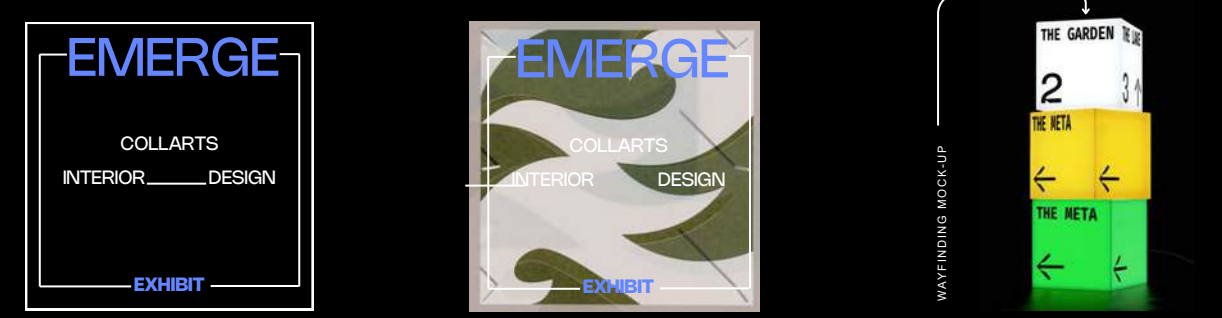
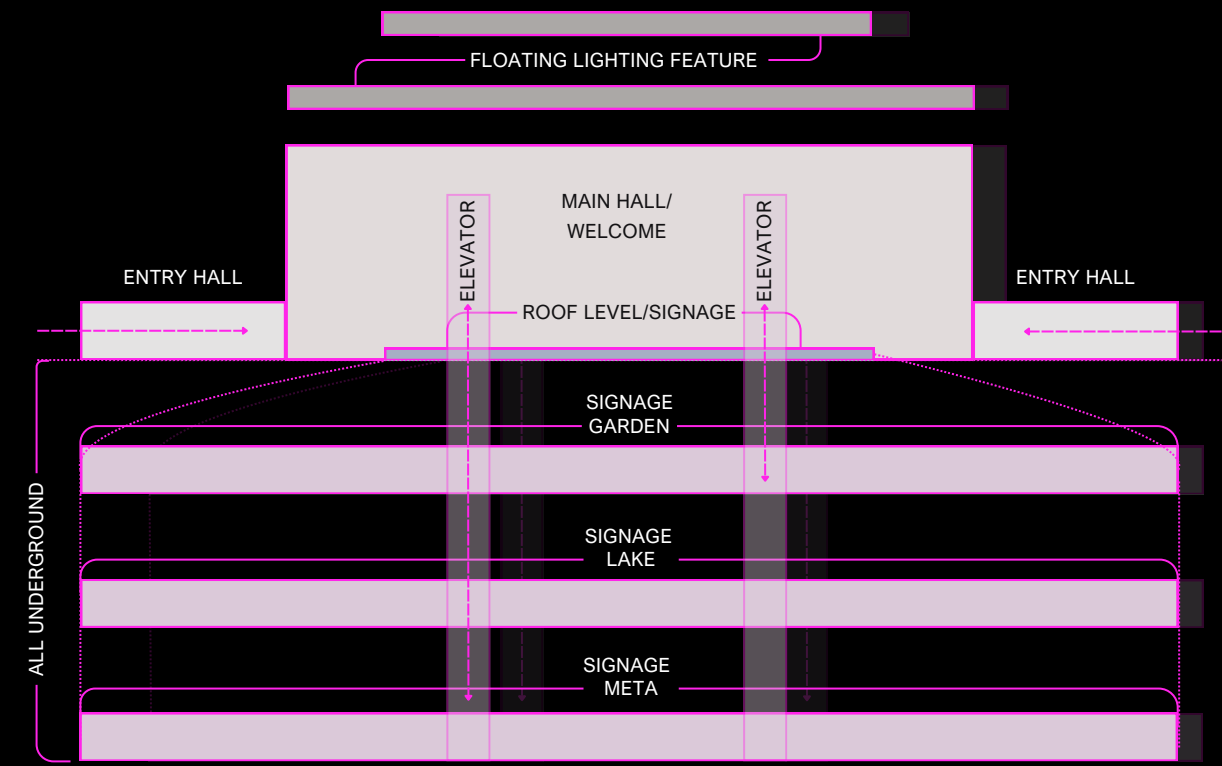
Objective: Exploring emerging technologies and their impact on the design industry, the objective was to curate an engaging virtual exhibition tailored to showcase the works of Collarts's Interior Design students.

Response: Emerge Exhibit is a VR showcase of cutting-edge work by emerging interior designers from Collarts. With 4 levels of varied experiences, the exhibit also represents Collarts's ethos of community and creative expression. Since the launch of Emerge, it has proudly served as promotional content for a Portfolio Review Event in April 2024. Emerge Exhibit promises to inspire and ignite wonder through an immersive and multi-sensory approach.

EMERGE Exhibit

EMERGE Exhibit is a VR showcase of cutting-edge work by emerging interior designers from Collarts. IN LINE WITH Collarts' brand identity, EMERGE explores the duality of physical and digital realms, embracing the metaverse to blur traditional boundaries.

With 4 levels of varied experiences showcasing the interplay of nature and technology, visitors enter through the Main Hall and descend to the levels below.



Emerge Exhibit

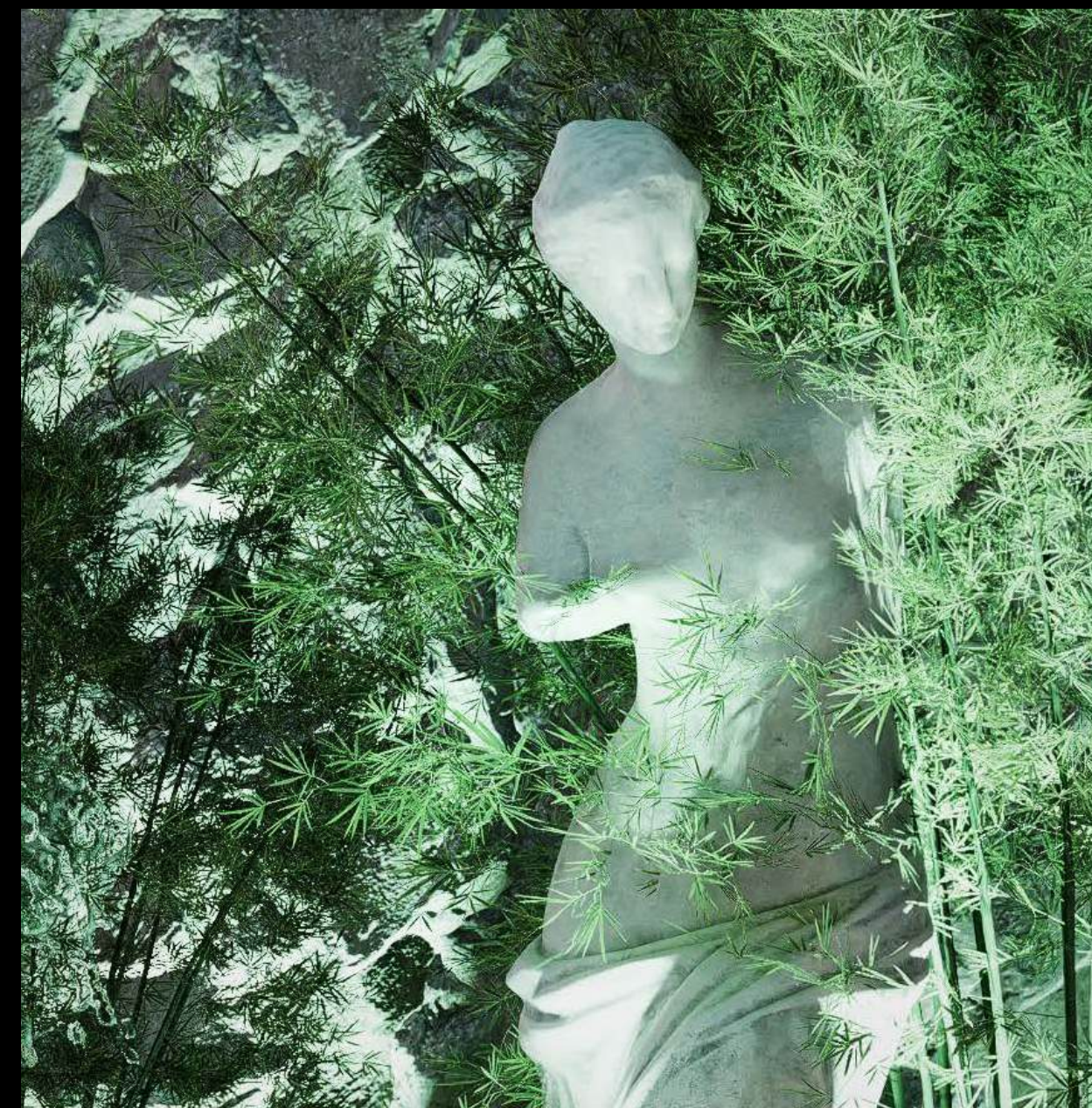
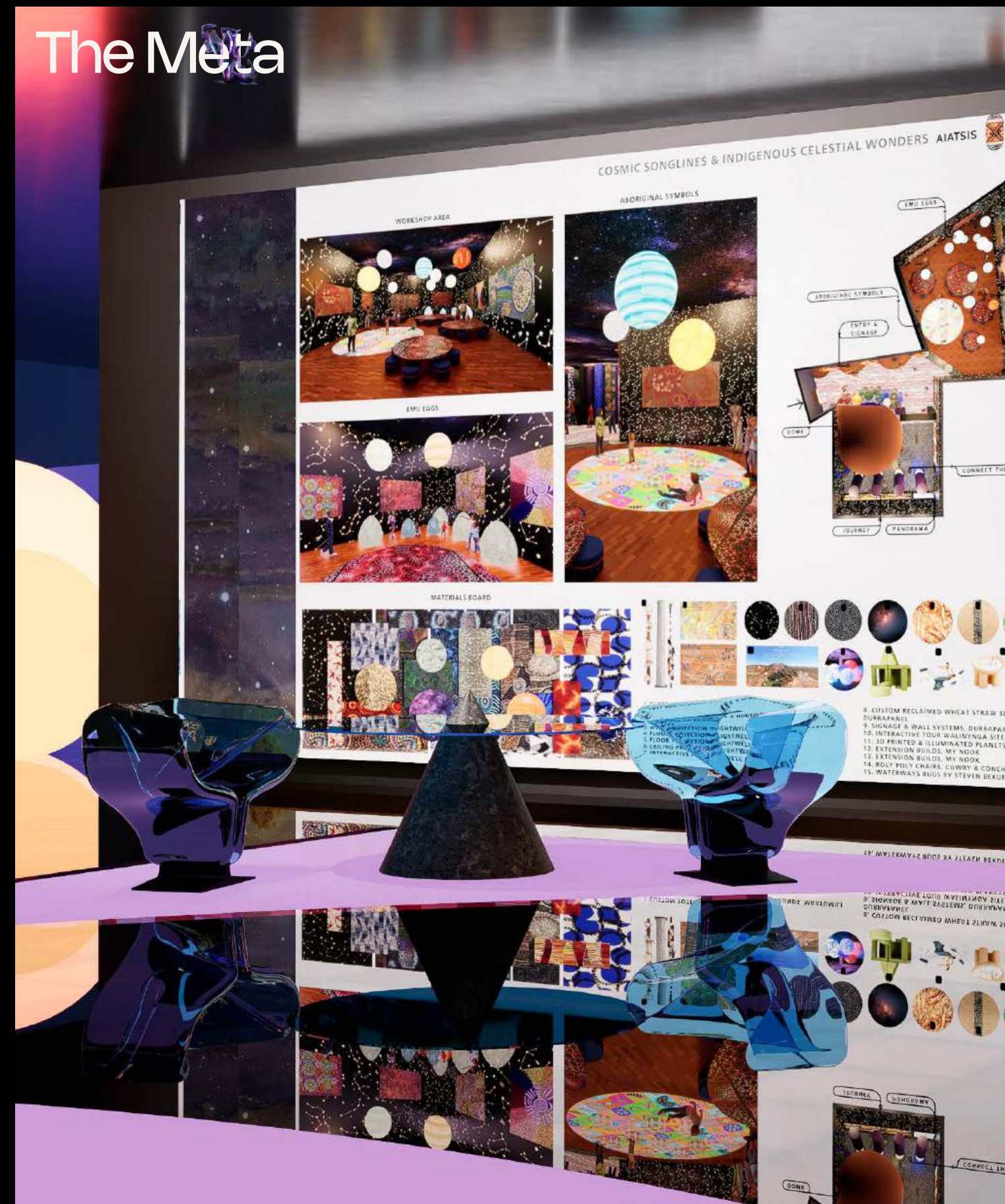
Emerge Exhibit is a VR showcase of cutting-edge work by emerging interior designers from Collarts. IN LINE WITH Collarts' brand identity, EMERGE explores the duality of physical and digital realms, embracing the metaverse to blur traditional boundaries.

With 4 levels of varied experiences showcasing the interplay of nature and technology, visitors enter through the Main Hall and descend to the levels below.

FLOORPLAN - LAKE LEVEL

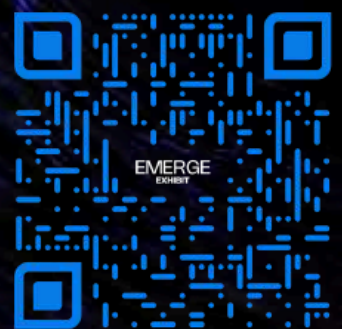


FLOORPLAN - META LEVEL



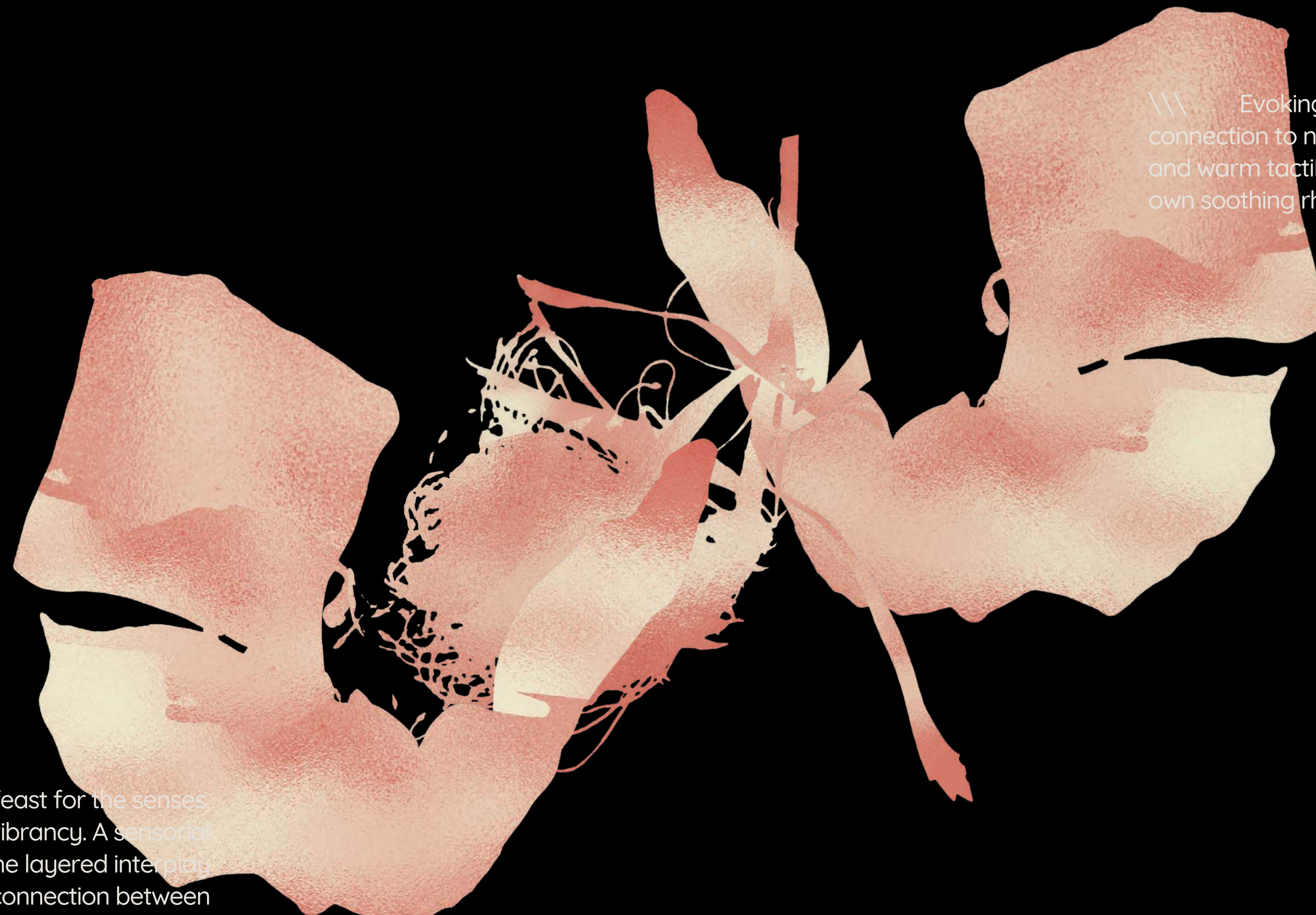


WALKTHROUGH



Amalgamating a range of influences and sensorial imagery for a nourishing and calming environment. ///

\\ Evoking serenity and connection to nature with gentle hues and warm tactility, each space has its own soothing rhythm.



/// A visual feast for the senses, instilling life and vibrancy. A sensorial atmosphere. The layered interplay fosters a seamless connection between artistic vision and enriching experience.

Fueled by fiery passion, adventure and charisma, paying tribute through a spirited approach. \\

