



PRIOR'S EDGE
TAKELEY

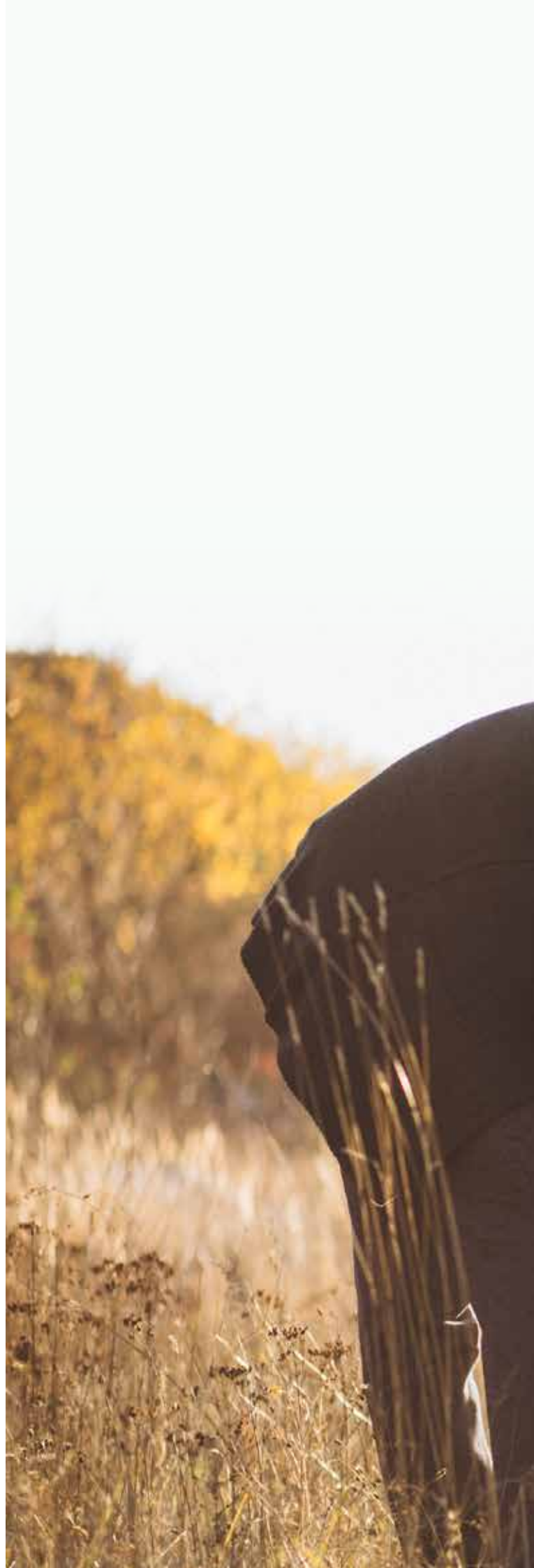
> dandara

ABOUT DANDARA

At Dandara we create award-winning homes which combine innovative design with the highest standards of quality. We build in the best locations and always with the customer in mind.

We work with local communities in order to ensure the developments we build enhance and complement the local surroundings and are designed with longevity so our customers will love living in them for years to come.

Our high standards are reflected in our dedication to our customers and the service they receive, cementing our position as one of the UK's most respected private housebuilders.



WELCOME TO
PRIOR'S EDGE

Surrounded by the picturesque Essex countryside and located in the charming village of Takeley, Prior's Edge offers the best of rural tranquillity with outstanding connectivity. This superb collection of contemporary new homes is designed to deliver the style, comfort and quality that you deserve – now and in the future.



VILLAGE LIVING

Set within the beautiful north-west Essex countryside, Takeley is a charming village that offers a peaceful rural lifestyle with exceptional connectivity. Surrounded by green fields and close to the National Trust's Hatfield Forest, it's a place where you can slow the pace, enjoy nature and still stay well connected to everything you need.

For everyday essentials, Takeley provides a selection of local amenities including a convenience store, pharmacy and friendly village pubs, while nearby Great Dunmow and Bishop's Stortford offer a wider range of shops, cafés, restaurants and leisure facilities. From countryside walks and cycling along the Flich Way, to days out at Mountfitchet Castle or Audley End House, there's plenty to explore right on your doorstep.

Commuters benefit from excellent transport links via the A120 and M11, offering direct routes to London, Cambridge and Chelmsford, while Stansted Airport and its train station are just over two miles away, providing regular express services to London Liverpool Street.

Takeley combines tranquillity with modern convenience – a welcoming village that offers the best of both worlds for families, professionals and anyone seeking a more balanced way of life.

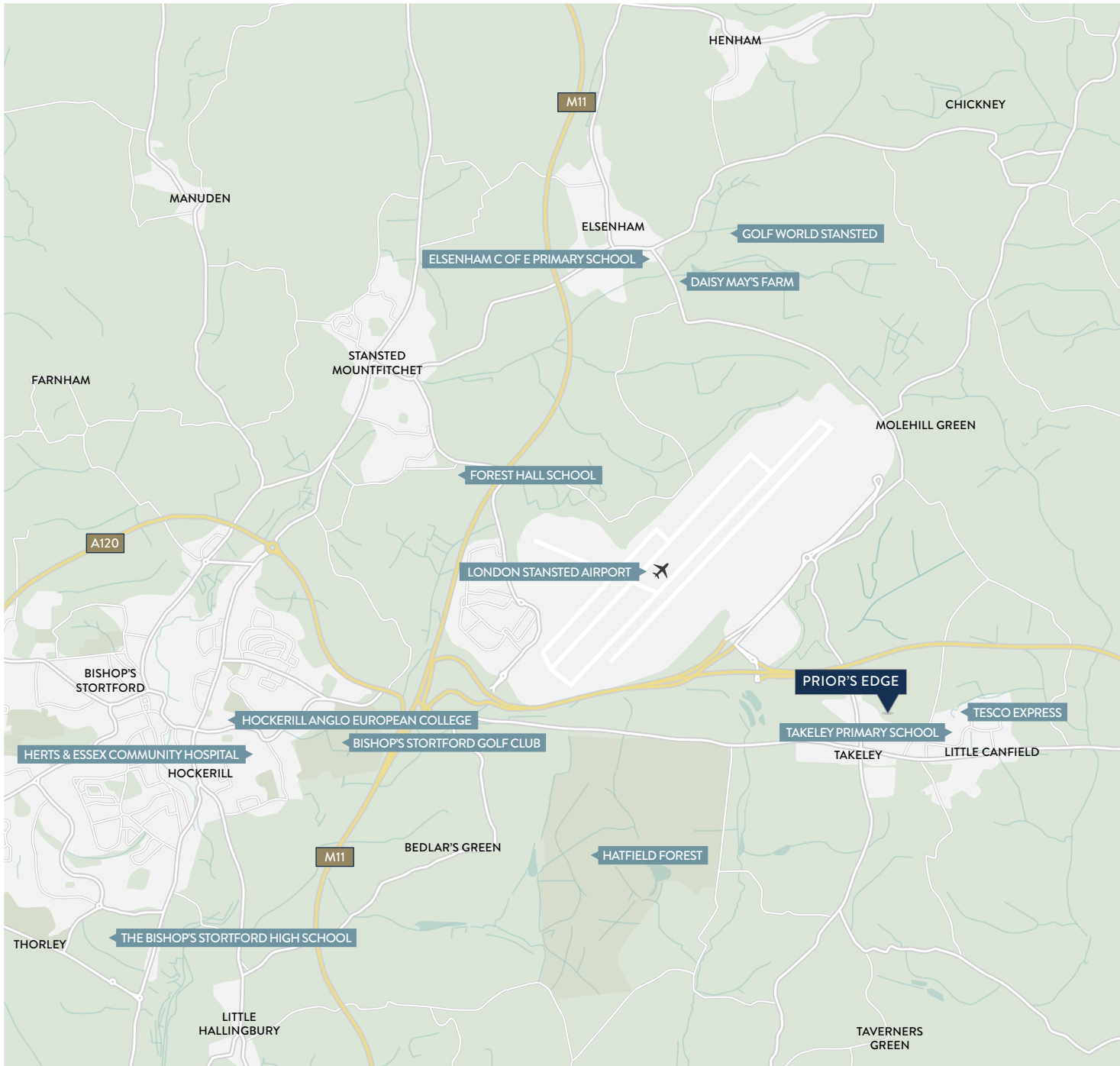


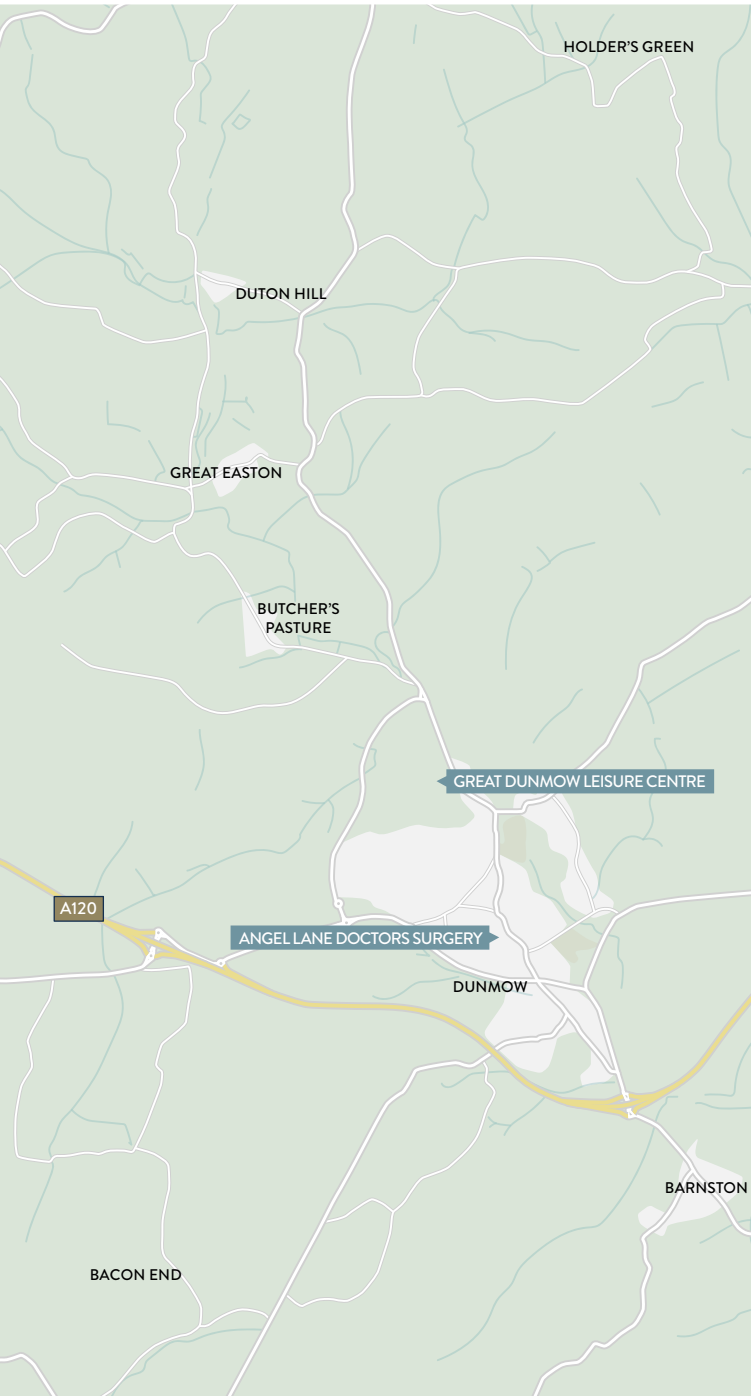


This Computer Generated Image of Prior's Edge is indicative only.









THE PERFECT LOCATION

EDUCATION

Roseacres Primary School.....	1 mile
Takeley Primary School.....	2 miles
St Mary's C of E Primary School Hatfield Broad Oak.....	4 miles
Elsenham C of E Primary School	4 miles
Birchwood High School	5 miles
Great Dunmow Primary School	5 miles
Dunmow St Mary's Primary School.....	5 miles
Forest Hall School, Stansted Mountfitchet	5.2 miles
Hockerill Anglo-European College	5.5 miles
The Hertfordshire & Essex High School.....	6 miles
Helena Romanes School, Great Dunmow.....	6.4 miles
The Bishop's Stortford High School	8.4 miles
Leventhorpe.....	10 miles

LOCAL AMENITIES

Flitch Way.....	2 miles
The Lion and Lamb	2 miles
Hatfield Forest	3 miles
Daisy May's Farm.....	4 miles
Golf World Stansted	4 miles
Bishop's Stortford Golf Club	5 miles
Angel Lane Doctors Surgery.....	5 miles
John Tasker Doctors Surgery	5 miles
Nuffield Health.....	5 miles
Stansted Doctors Surgery.....	6 miles
Mountfitchet Castle & House on the Hill Toy Museum.....	6 miles
Great Dunmow Leisure Centre	7 miles
Audley End House and Gardens.....	13 miles

TRAVEL

Stansted Airport Station	2 miles
Bishop's Stortford Station.....	6 miles
Stansted Airport.....	2 miles
A120	0.3 miles
M11.....	3 miles





HIGH QUALITY SPECIFICATION

At Dandara, we believe the difference between simply building a house and creating a home is attention to detail. From the initial design stage, right through to the final finishing touches, quality is built-in as standard.

SPECIFICATION DETAILS

KITCHENS

Choice* of high-quality fully fitted contemporary kitchen with stylish laminate or quartz worktops.** Equipped with appliances including: stainless steel recirculatory hood, integrated single or double oven,** ceramic hob with glass splashback, integrated fridge freezer, dishwasher, washing machine,** and a stainless steel 1 ½ bowl sink with chrome tap.

BATHROOMS

Quality white suite comprising bath,** basin, WC, heated towel rail. Porcelanosa floor and wall tiles.

ENSUITES**

The stylish ensuites feature a high quality contemporary white basin with polished chrome taps, enclosed thermostatically controlled shower with polished chrome fittings, WC and a heated towel rail. Porcelanosa floor and wall tiles.

WC

All feature high quality white sanitaryware comprising WC, basin with tiled splash back and polished chrome taps.

INTERNAL JOINERY

High quality white panelled internal doors with contemporary chrome door handles.

INTERNAL FINISH & DECORATION

Walls and ceilings painted with white emulsion. All woodwork is finished in white satin finish.

WARDROBES

Four and five bedroom homes include stylish fitted wardrobes with sliding doors in bedroom one.

RENEWABLE TECHNOLOGIES

Waste water heat recovery installed to selected homes.**

HEATING & HOT WATER

Provided by air source heat pump and domestic hot water storage cylinder. Steel panel radiators with thermostatic radiator valves.

ELECTRICAL

White sockets and switches throughout. Telephone and data sockets in lounge and study (where applicable). TV/Satellite outlets to lounge and bedroom one.** USB sockets to each habitable room.

LIGHTING

Recessed LED down lighting to kitchen/dining, bathrooms, ensuites and WC. Pendants to lounge, dining area, bedrooms, hallway, landing and study (where applicable). Under cabinet LED lighting to wall units in kitchen.

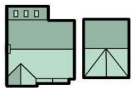
WINDOWS AND DOORS

Pre-finished front and back door set complete with multi-point locking mechanism and chrome door lever. Double-glazed uPVC casement windows.

EXTERNAL

Block pavior to driveway, paved slabs to paths and patios. External tap. Front gardens are turfed/landscaped. Rear gardens are fenced and turfed. Pre-finished garage door (where applicable). Electric vehicle charging points to all homes.

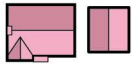
* Subject to build stage. ** Subject to house type and plot.



The Blenheim
5 bed



The Whitton
3 bed



The Kingston
5 bed



The Belmont
2 bed



The Chartwell
4 bed



The Lime
2 bed



The Chawton
4 bed



The Vyne
2 bed



The Goodwood
4 bed



Shared
Ownership



The Frogmore
3 bed



Affordable
Rent



The Gosford V1
3 bed

VP Visitor Parking



The Gosford V2
3 bed

ss Sub Station

Proposed Future
School Land

Existin
Home

Priors Wood



Existing Homes



The Blenheim

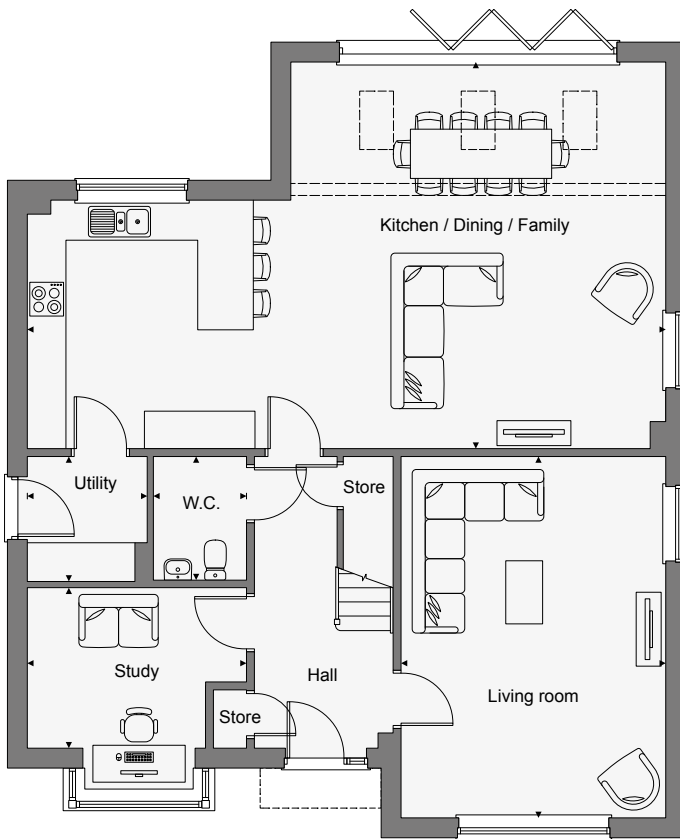
FIVE BEDROOM DETACHED HOME WITH A DOUBLE GARAGE



This Computer Generated Image is indicative only to give an impression of the house design, it is not plot specific.

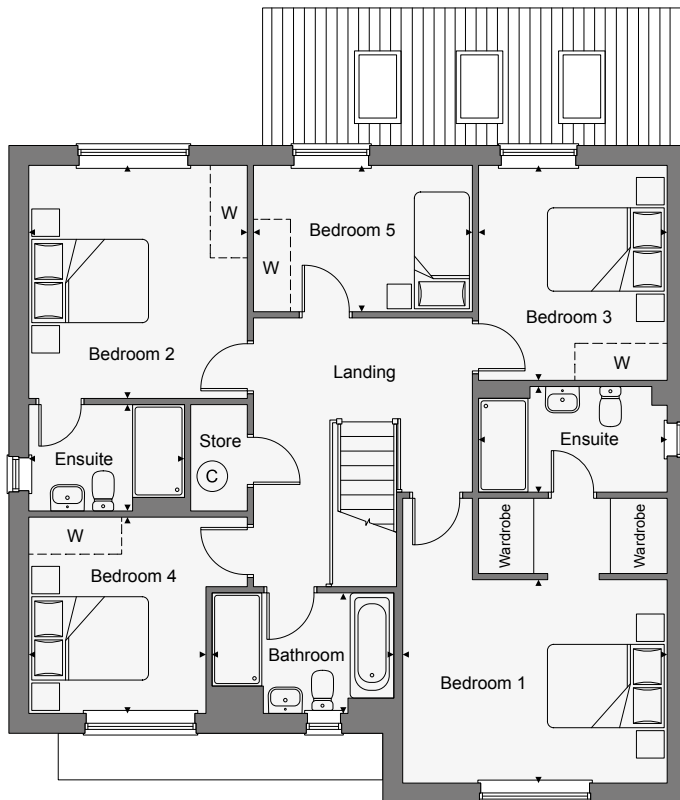
This generous five bedroom detached home features a spacious living room at the front of the property, with a superb open-plan kitchen-dining-family room at the rear, with bi-fold doors to access the garden. There is also a separate study, a utility room and a W.C. on the ground floor.

Upstairs, there are four double bedrooms, a single bedroom and a stylish family bathroom. Bedrooms one and two both benefit from an ensuite shower room with walk-in wardrobes included in bedroom one.



GROUND FLOOR

Kitchen / Dining / Family	10.36m x 6.72m	34'0" x 20'7"
Living room	5.86m x 4.29m	19'3" x 14'1"
Study	3.54m x 2.59m	11'7" x 8'6"
Utility	2.05m x 1.95m	6'9" x 6'5"
W.C.	2.05m x 1.50m	6'9" x 4'11"



FIRST FLOOR

Bedroom 1	4.29m x 3.32m	14'1" x 10'11"
Ensuite 1	3.05m x 1.70m	10'0" x 5'7"
Bedroom 2	3.81m x 3.54m	12'6" x 11'7"
Ensuite 2	2.52m x 1.72m	8'3" x 5'8"
Bedroom 3	3.51m x 3.05m	11'6" x 10'0"
Bedroom 4	3.20m x 2.89m	10'6" x 9'6"
Bedroom 5	3.54m x 2.38m	11'7" x 7'10"
Bathroom	2.95m x 1.93m	9'8" x 6'4"

 - suggested space for wardrobe

Floorplans shown for plots 1, 50, 52 & 57. Plot 49 is handed.

Energy Band Rating - B

The Kingston

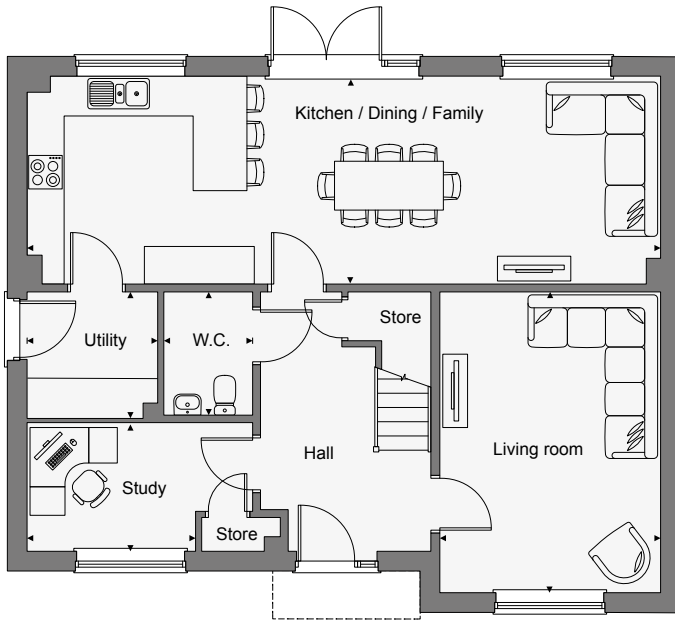
FIVE BEDROOM DETACHED HOME WITH A DOUBLE GARAGE



This Computer Generated Image is indicative only to give an impression of the house design, it is not plot specific.

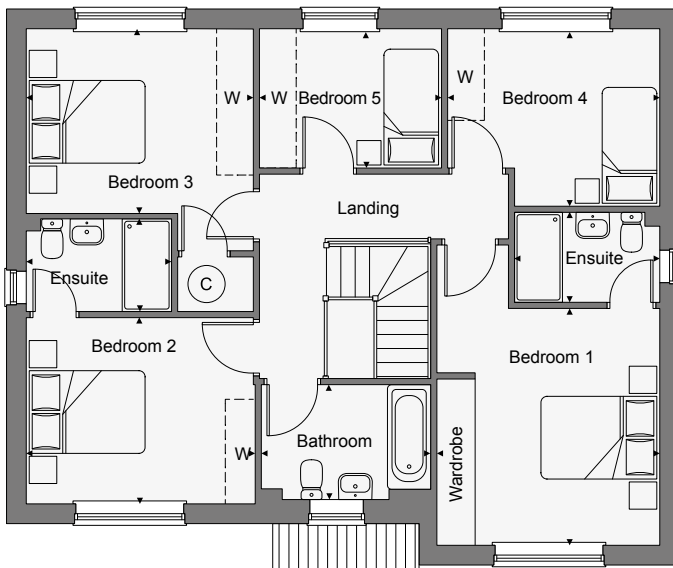
This generous five bedroom detached home features a spacious living room at the front of the property and a superb open-plan kitchen-dining-family room at the rear, with French doors providing access to the garden. There is also a separate study, utility room and W.C. on the ground floor.

Upstairs, there are three double bedrooms, two single bedrooms and a stylish family bathroom. Bedrooms one and two both benefit from an ensuite shower room with fitted wardrobes included in bedroom one.



GROUND FLOOR

Kitchen / Dining / Family	10.37m x 3.38m	34'1" x 11'1"
Living room	4.92m x 3.62m	16'2" x 11'11"
Study	2.75m x 2.08m	9'1" x 6'10"
Utility	2.13m x 2.08m	7'0" x 6'10"
W.C.	2.05m x 1.50m	6'9" x 4'11"



FIRST FLOOR

Bedroom 1	3.87m x 3.61m	12'8" x 11'10"
Ensuite 1	2.37m x 1.49m	7'9" x 4'11"
Bedroom 2	3.74m x 3.08m	12'3" x 10'1"
Ensuite 2	2.36m x 1.50m	7'9" x 4'11"
Bedroom 3	3.70m x 3.03m	12'2" x 9'11"
Bedroom 4	3.47m x 2.92m	11'5" x 9'7"
Bedroom 5	2.96m x 2.28m	9'9" x 7'6"
Bathroom	2.74m x 1.87m	9'0" x 6'2"

 - suggested space for wardrobe

Floorplans shown for plot 93. Plots 54, 56 & 58 are handed.

Energy Band Rating - B

The Chartwell

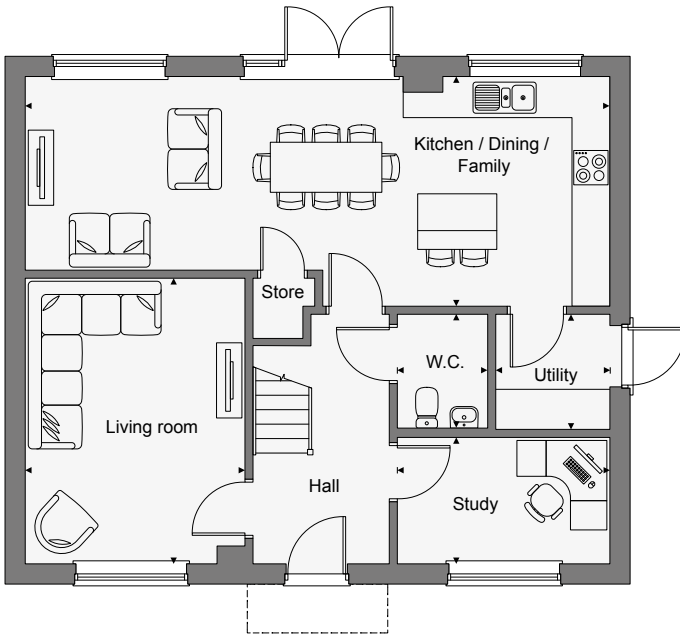
FOUR BEDROOM DETACHED HOME WITH A GARAGE



This Computer Generated Image is indicative only to give an impression of the house design, it is not plot specific.

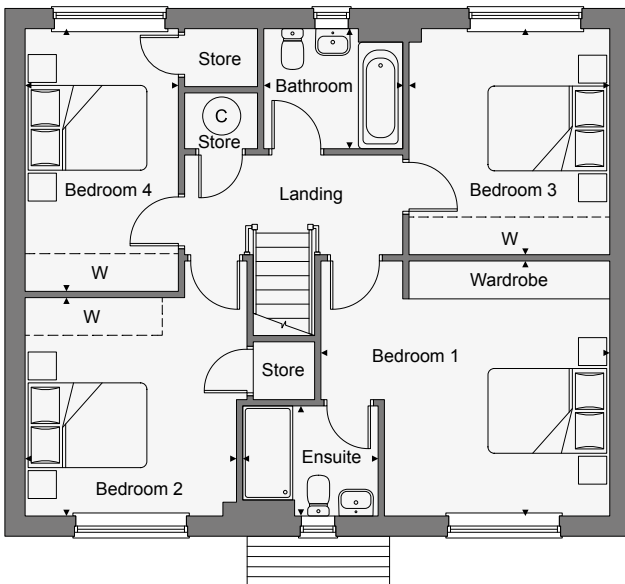
This spacious four bedroom detached home features a generous living room and study at the front of the property, with a superb open-plan kitchen-dining-family room at the rear with French doors to access the garden. There is also a utility room and W.C. on the ground floor.

Upstairs, bedroom one includes fitted wardrobes and an ensuite shower room. There are three further double bedrooms, a stylish family bathroom and storage cupboards.



GROUND FLOOR

Kitchen / Dining / Family	9.35m x 3.65m	30'8" x 12'0"
Living room	4.56m x 3.52m	15'0" x 11'7"
Study	3.39m x 2.05m	11'1" x 6'9"
Utility	1.85m x 1.83m	6'1" x 6'0"
W.C.	1.85m x 1.50m	6'1" x 4'11"



FIRST FLOOR

Bedroom 1	4.64m x 4.10m	15'3" x 13'5"
Ensuite 1	2.15m x 1.70m	7'0" x 5'7"
Bedroom 2	3.51m x 3.41m	11'6" x 11'2"
Bedroom 3	3.59m x 3.23m	11'9" x 10'7"
Bedroom 4	4.18m x 2.48m	13'9" x 8'2"
Bathroom	2.21m x 1.86m	7'3" x 6'1"

 - suggested space for wardrobe

Floorplans shown for plots 53, 59 & 94. Plots 48, 51 & 55 are handed.

Energy Band Rating - B

The Goodwood

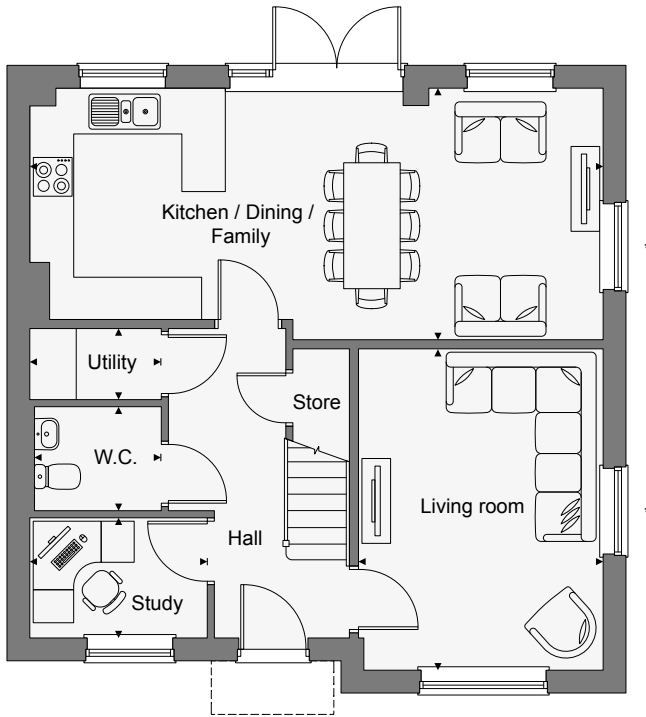
FOUR BEDROOM DETACHED HOME WITH A GARAGE



This Computer Generated Image is indicative only to give an impression of the house design, it is not plot specific.

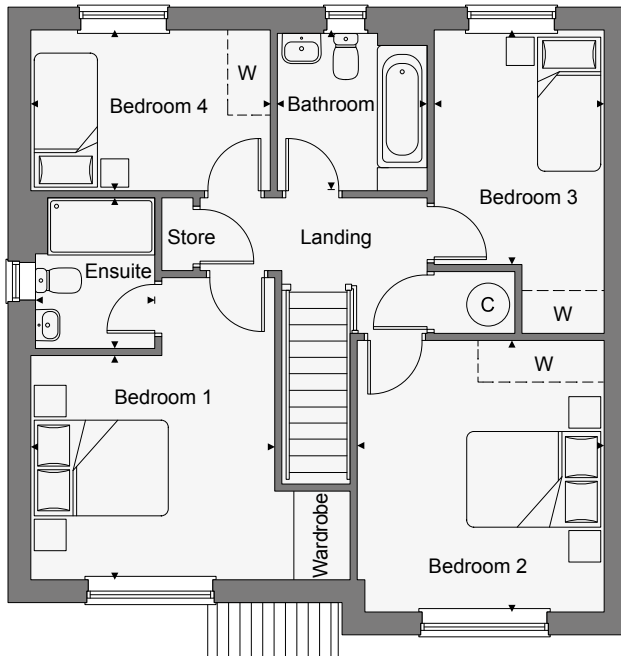
This comfortable four bedroom detached home features a generous living room and study at the front of the property, with a superb open-plan kitchen-dining-family room to the rear, from which French doors provide access to the garden. There is also a separate utility room and W.C. on the ground floor.

Upstairs, bedroom one includes fitted wardrobes and benefits from its own ensuite shower room. There is a further double bedroom, two single bedrooms, a stylish family bathroom and additional storage.



GROUND FLOOR

Kitchen / Dining / Family	8.16m x 3.54m	26'9" x 11'7"
Living room	4.54m x 3.50m	14'11" x 11'6"
Study	2.50m x 1.69m	8'2" x 5'6"
W.C.	1.80m x 1.50m	5'11" x 4'11"
Utility	1.80m x 1.01m	5'11" x 3'4"



FIRST FLOOR

Bedroom 1	3.46m x 3.19m	11'4" x 10'5"
Ensuite 1	2.15m x 1.70m	7'1" x 5'7"
Bedroom 2	3.86m x 3.51m	12'8" x 11'6"
Bedroom 3	3.30m x 2.43m	10'10" x 8'0"
Bedroom 4	3.37m x 2.27m	11'1" x 7'5"
Bathroom	2.27m x 2.15m	7'5" x 7'1"

 - suggested space for wardrobe

Floorplans shown for plots 43 & 90. Plots 17, 18, 47 & 65 are handed. *Window to plots 43, 47 & 90 only. Please ask your sales consultant for full details.

Energy Band Rating - B

The Chawton

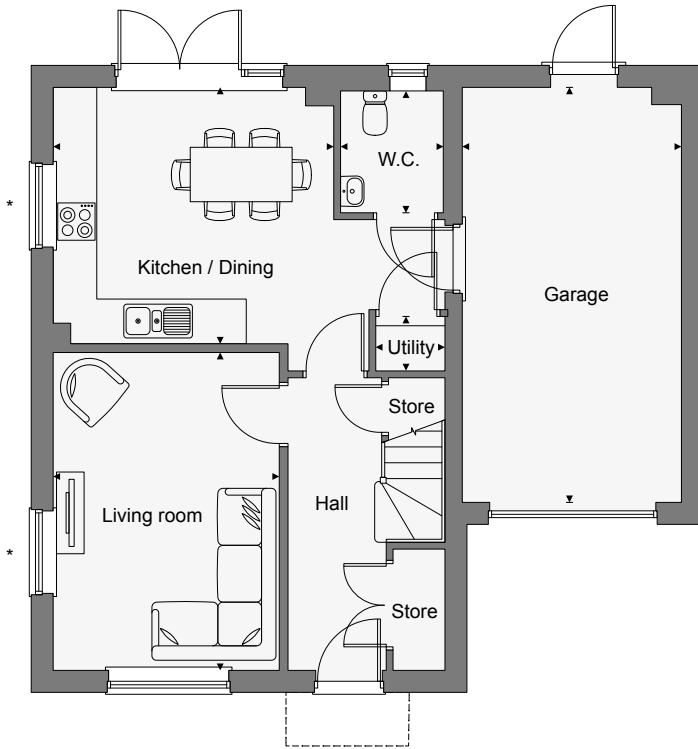
FOUR BEDROOM DETACHED HOME WITH AN INTEGRAL GARAGE



This Computer Generated Image is indicative only to give an impression of the house design, it is not plot specific.

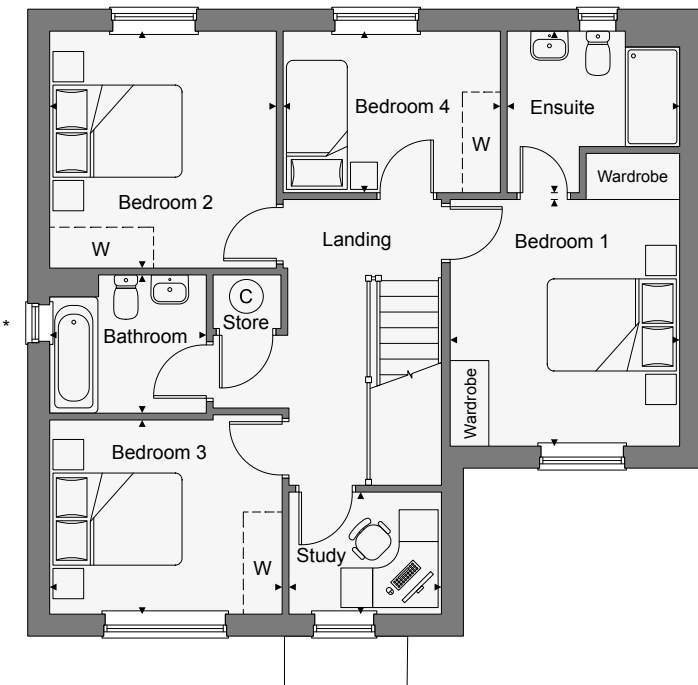
This comfortable four bedroom detached home features a living room at the front of the property, with an open-plan kitchen-dining room to the rear, from which French doors provide access to the garden. There is also a utility and W.C. on the ground floor.

Upstairs, bedroom one includes fitted wardrobes and benefits from its own ensuite shower room. There are a further two double bedrooms, a single bedroom, study, and stylish family bathroom.



GROUND FLOOR

Kitchen / Dining	4.11m x 3.78m	13'6" x 12'5"
Living room	4.67m x 3.31m	15'4" x 10'10"
Utility	0.98m x 0.83m	3'3" x 2'9"
W.C.	1.80m x 1.50m	5'11" x 4'11"
Garage	6.14m x 3.32m	20'2" x 10'11"



FIRST FLOOR

Bedroom 1	3.65m x 3.42m	12'0" x 11'2"
Ensuite 1	2.50m x 1.65m	8'2" x 5'5"
Bedroom 2	3.48m x 3.35m	11'5" x 11'0"
Bedroom 3	3.44m x 2.85m	11'3" x 9'4"
Bedroom 4	3.22m x 2.38m	10'7" x 7'10"
Study	2.23m x 1.82m	7'4" x 6'0"
Bathroom	2.25m x 2.05m	7'4" x 6'9"

 - suggested space for wardrobe

Floorplans shown for plot 21. Plot 16 is handed. *Windows to plot 21 only. Please ask your sales consultant for full details.

Energy Band Rating - B

The Frogmore

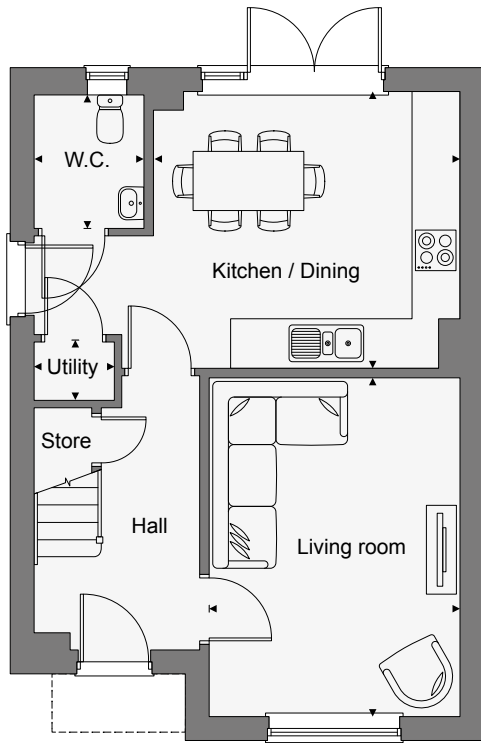
THREE BEDROOM DETACHED HOME WITH DRIVEWAY PARKING



This Computer Generated Image is indicative only to give an impression of the house design, it is not plot specific.

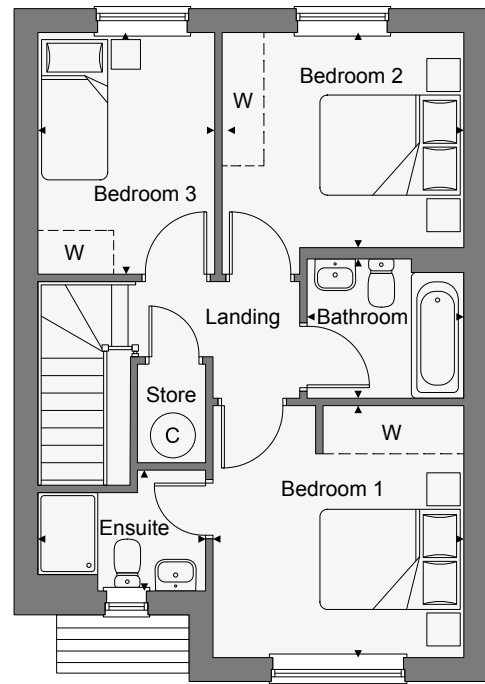
This three bedroom detached home features a living room at the front of the property, with an open-plan kitchen-dining room to the rear, from which French doors provide access to the garden. There is also a separate utility and W.C. on the ground floor.

Upstairs, bedroom one has its own ensuite shower room. There is a further double bedroom, single bedroom, a stylish family bathroom and additional storage on the landing.



GROUND FLOOR

Kitchen / Dining	4.17m x 3.73m	13'9" x 12'3"
Living Room	4.58m x 3.39m	15'0" x 11'2"
W.C.	1.79m x 1.44m	5'11" x 4'9"
Utility	1.05m x 0.81m	3'5" x 2'8"



FIRST FLOOR

Bedroom 1	3.42m x 3.39m	11'3" x 11'2"
Ensuite	2.30m x 1.59m	7'7" x 5'3"
Bedroom 2	3.32m x 2.93m	10'11" x 9'7"
Bedroom 3	3.29m x 2.34m	10'10" x 7'8"
Bathroom	2.13m x 1.85m	7'0" x 6'1"

 - suggested space for wardrobe

Floorplans shown for plots 2, 6, 10, 14, 19 & 42. Plots 5, 9, 13, 15, 22 & 64 are handed.

Energy Band Rating - B

The Gosford V1

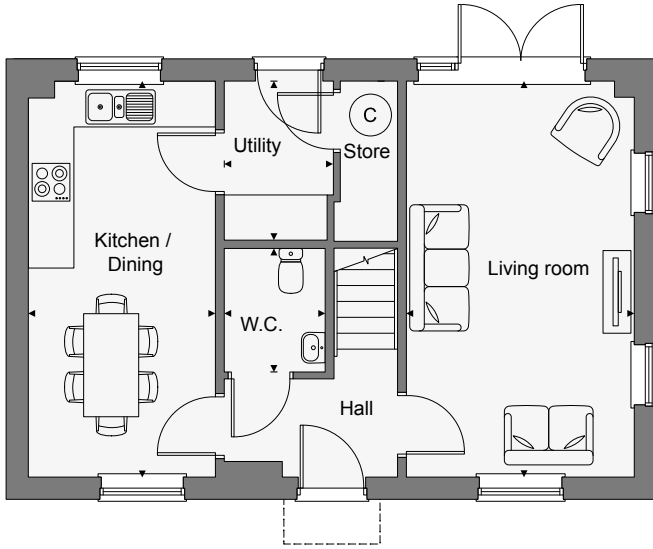
THREE BEDROOM DETACHED HOME WITH DRIVEWAY PARKING



This Computer Generated Image is indicative only to give an impression of the house design, it is not plot specific.

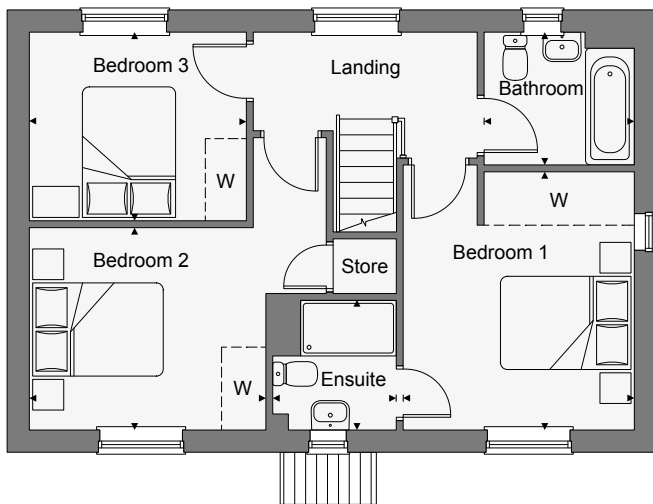
This charming three bedroom double-fronted detached home features a spacious living room with French doors opening onto the garden. The stylish open-plan kitchen-dining room runs along the opposite side of the home. There is also a utility space, large store cupboard and a W.C.

Upstairs, bedroom one has an ensuite shower room. There are a further two double bedrooms and a stylish family bathroom, along with additional storage in bedroom two.



GROUND FLOOR

Kitchen / Dining	5.75m x 2.70m	18'10" x 8'10"
Living room	5.75m x 3.31m	18'10" x 10'10"
Utility	2.31m x 1.58m	7'7" x 5'2"
W.C.	1.80m x 1.50m	5'11" x 4'11"



FIRST FLOOR

Bedroom 1	3.76m x 3.37m	12'4" x 11'1"
Ensuite	1.81m x 1.80m	5'11" x 5'11"
Bedroom 2	3.44m x 2.92m	11'3" x 9'7"
Bedroom 3	3.18m x 2.75m	10'5" x 9'0"
Bathroom	2.18m x 1.90m	7'2" x 6'3"

 - suggested space for wardrobe

Floorplans shown for plot 89.

Energy Band Rating - B

The Gosford V2

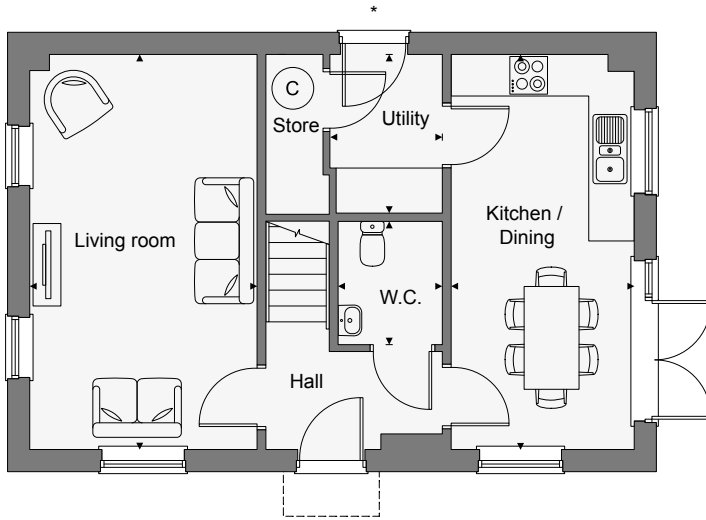
THREE BEDROOM DETACHED HOME WITH DRIVEWAY PARKING



This Computer Generated Image is indicative only to give an impression of the house design, it is not plot specific.

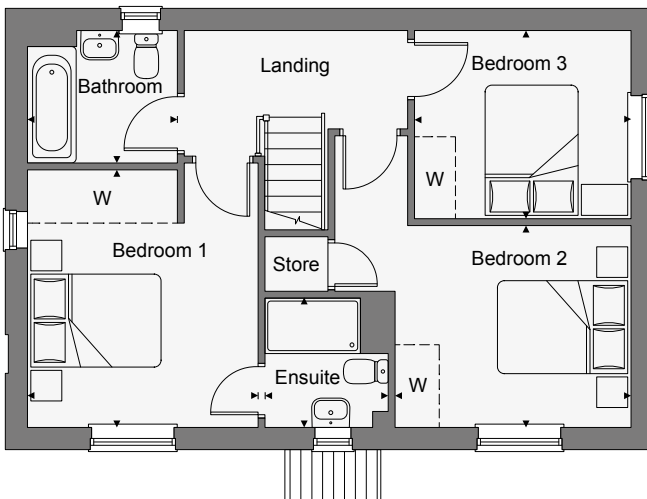
This charming three bedroom double-fronted detached home features a spacious dual-aspect living room. The stylish open-plan kitchen-dining room runs along the opposite side of the home, with French doors to access the garden. There is also a utility space, large store cupboard and a W.C.

Upstairs, bedroom one has an ensuite shower room. There are two further double bedrooms and a stylish family bathroom, along with additional storage in bedroom two.



GROUND FLOOR

Kitchen / Dining	5.75m x 2.65m	18'10" x 8'8"
Living room	5.75m x 3.31m	18'10" x 10'10"
Utility	2.31m x 1.64m	7'7" x 5'4"
W.C.	1.80m x 1.50m	5'11" x 4'11"



FIRST FLOOR

Bedroom 1	3.76m x 3.37m	12'4" x 11'1"
Ensuite	1.81m x 1.80m	5'11" x 5'11"
Bedroom 2	3.44m x 2.92m	11'3" x 9'7"
Bedroom 3	3.18m x 2.75m	10'5" x 9'0"
Bathroom	2.18m x 1.90m	7'2" x 6'3"

 - suggested space for wardrobe

Floorplans shown for plots 12, 20 & 38. Plots 11 & 39 are handed. *Door to plot 20 only. Please ask your sales consultant for full details.

Energy Band Rating - B

The Whitton

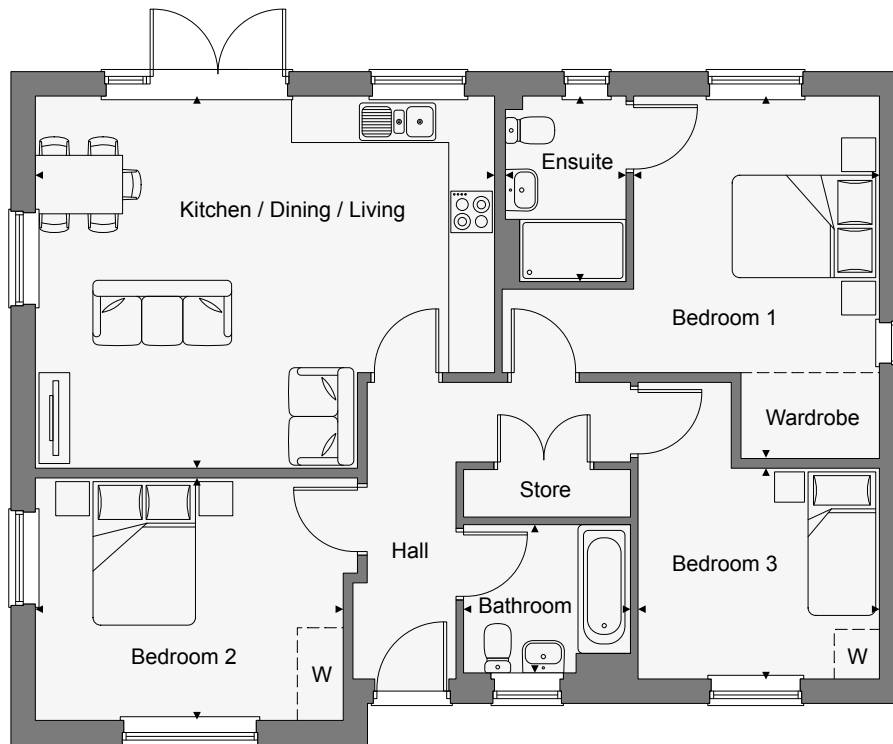
THREE BEDROOM DETACHED BUNGALOW WITH A GARAGE AND DRIVEWAY PARKING



This Computer Generated Image is indicative only to give an impression of the house design, it is not plot specific.

This three bedroom spacious bungalow features an open-plan kitchen-dining-living room from which French doors provide access to the garden.

Bedroom one benefits from an ensuite shower room. There is a further double bedroom, a single bedroom, stylish family bathroom and additional storage.



GROUND FLOOR

Kitchen / Dining / Living	6.06m x 4.91m	19'11" x 16'1"
Bedroom 1	4.77m x 3.25m	15'8" x 10'8"
Ensuite	2.42m x 1.59m	7'11" x 5'3"
Bedroom 2	4.24m x 3.18m	13'11" x 10'5"
Bedroom 3	3.19m x 2.74m	10'5" x 8'11"
Bathroom	2.21m x 1.95m	7'3" x 6'5"

 - suggested space for wardrobe

Floorplans shown for plot 61. Plot 60 is handed.

Energy Band Rating - B

The Lime

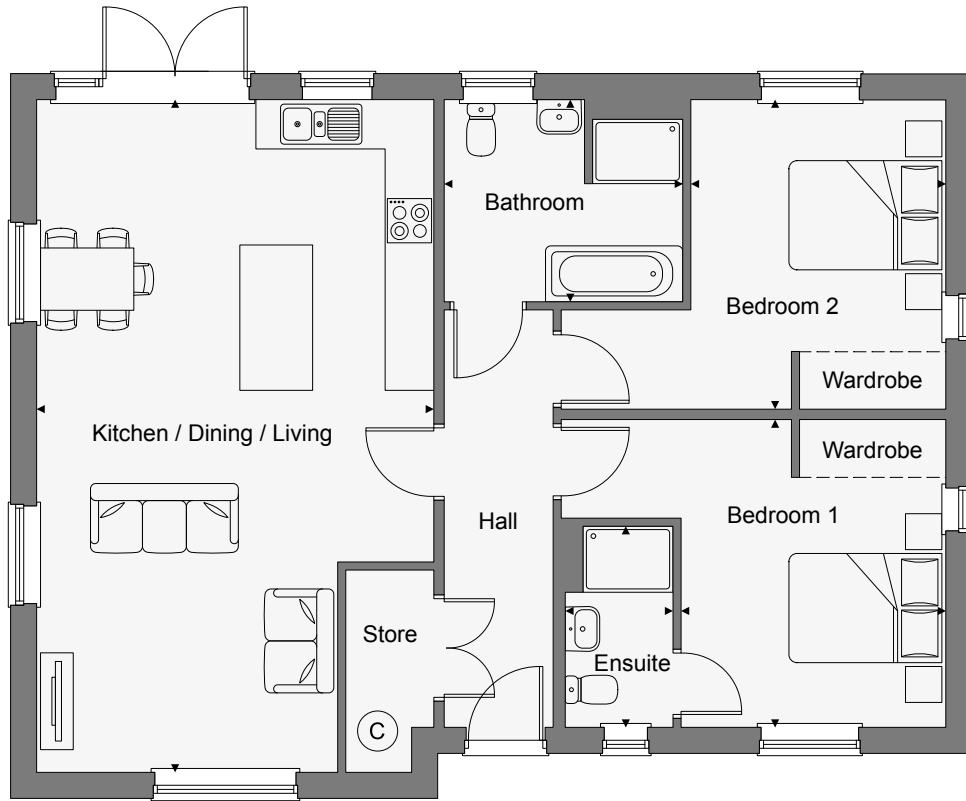
TWO BEDROOM DETACHED BUNGALOW WITH DRIVEWAY PARKING



This Computer Generated Image is indicative only to give an impression of the house design, it is not plot specific.

This classic two bedroom bungalow features an open-plan kitchen-dining-living room from which French doors provide access to the garden.

There are two spacious double bedrooms. Bedroom one benefits from an ensuite shower room. There is a stylish family bathroom, and additional storage off the hallway.



GROUND FLOOR

Kitchen / Dining / Living	8.34m x 4.91m	27'4" x 16'1"
Bedroom 1	3.83m x 3.16m	12'7" x 10'4"
Ensuite	2.47m x 1.33m	8'1" x 4'4"
Bedroom 2	3.80m x 3.28m	12'5" x 10'9"
Bathroom	2.98m x 2.45m	9'9" x 8'0"

 - suggested space for wardrobe

Floorplans shown for plot 63. Plot 62 is handed.

Energy Band Rating - B

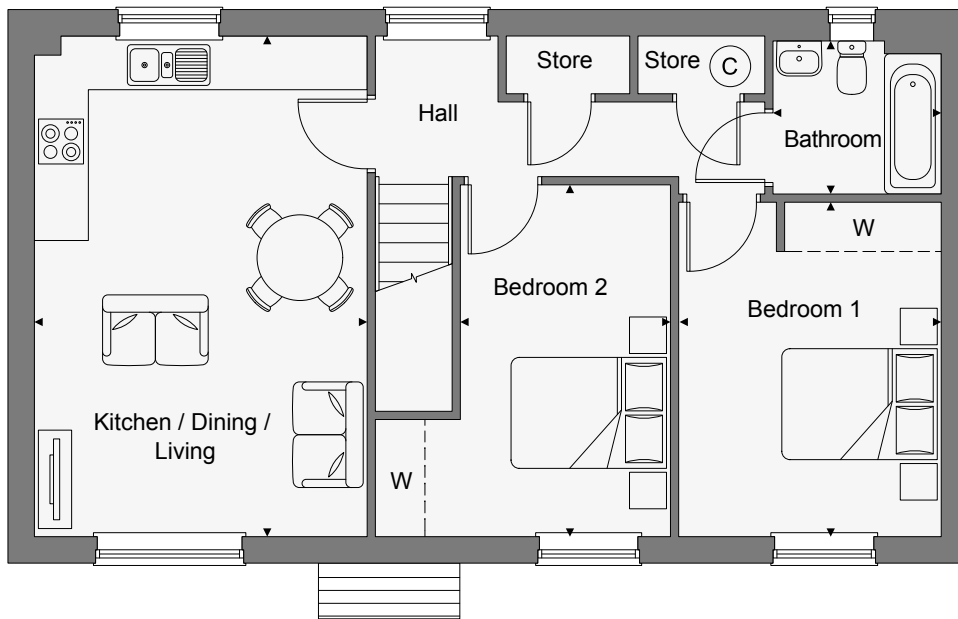
The Belmont

TWO BEDROOM COACH HOUSE WITH ALLOCATED PARKING



This Computer Generated Image is indicative only to give an impression of the house design, it is not plot specific.

This contemporary coach house features a spacious open-plan kitchen-dining-living room. There are two double bedrooms, a stylish family bathroom and storage cupboards along the hallway.



FIRST FLOOR

Kitchen / Dining / Living	6.09m x 4.04m	20'0" x 13'3"
Bedroom 1	4.08m x 3.17m	13'5" x 10'4"
Bedroom 2	4.30m x 2.61m	14'1" x 8'7"
Bathroom	2.06m x 1.87m	6'9" x 6'2"

 - suggested space for wardrobe

Floorplans shown for plot 66.

Energy Band Rating - B

The Vyne

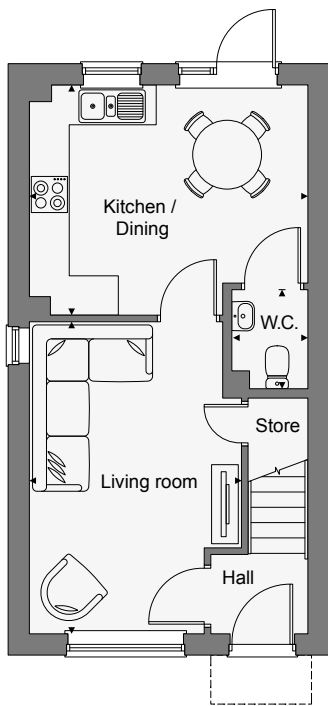
TWO BEDROOM HOME WITH DRIVEWAY PARKING



This Computer Generated Image is indicative only to give an impression of the house design, it is not plot specific.

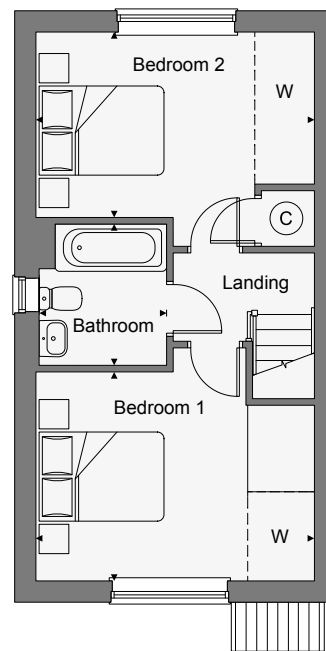
This classic two bedroom home features a living room at the front of the property with an open-plan kitchen-dining room to the rear with access to the garden. There is also a W.C. on the ground floor.

Upstairs, there are two double bedrooms and a stylish family bathroom.



GROUND FLOOR

Kitchen	4.22m x 3.52m	13'10" x 11'7"
Living room	4.72m x 3.22m	15'6" x 10'7"
W.C.	1.50m x 1.13m	4'11" x 3'8"



FIRST FLOOR

Bedroom 1	4.22m x 3.17m	13'10" x 10'5"
Bedroom 2	4.22m x 2.84m	13'10" x 9'4"
Bathroom	2.15m x 1.97m	7'1" x 6'6"

 - suggested space for wardrobe

Floorplans shown for plots 4, 8, 25, 27 & 86. Plots 3, 7, 26, 28, 87 & 88 are handed.

Energy Band Rating - B

WHY BUY NEW?

'Old vs new' is a long-running debate. But with a Dandara home, you'll find all the benefits of new beats an older home every time. Because then you can look forward to less maintenance and lower running costs, improved safety and security and not having the hassle of being in a chain. And don't forget, you'll have an entire blank canvas to put your own stamp on.

EVERY NEW DANDARA HOME INCLUDES

A 10 year guarantee for your peace of mind, provided by a third party.



INCLUDED AS STANDARD IN EVERY DANDARA HOME

All Dandara homes come complete with quality fitted kitchens and stylish contemporary bathrooms.



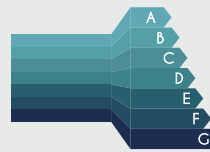
THEY CAN HELP YOU SAVE MONEY

Your energy bills could be up to 50% cheaper than an older equivalent which means you could save you hundreds per year on your household bills.*



THEY CAN HELP THE ENVIRONMENT

86% of new build homes are rated A-B for energy efficiency, while under 5% of existing properties reached the same standard.* The average new home generates 65% less carbon emissions than older properties of their type.*



IT'S LOWER MAINTENANCE

From higher building standards to improved energy efficiency, we invest in quality so you can enjoy lower maintenance living.



IT'S BRAND NEW AND READY FOR YOU

From the day you move in, everything in your new Dandara home is bright and brand new - ready for you just to add your own personality and style.



*According to HBF figures published January 2025.

HERE TO HELP

It's an exciting time when you're buying a new home. It can, however, be a little stressful. But with Dandara, our dedicated sales consultants and customer care teams are with you every step of the way, from your initial enquiry to moving day to beyond. So when we say we're here to help, we really do mean it.



MOVING MADE EASY

We could take care of selling your current home for you. Leaving you to think about loving life in your brand new, thoughtfully-considered Dandara home. We could even pay your estate agent fees up to £5,000.*



REFER A FRIEND

It's a real compliment when you recommend us to people you know, and we'd like to say 'thank you'. When your colleagues, friends or family buy a new Dandara home, you'll both receive £500.*



PART EXCHANGE

Want to buy a new Dandara home, but prefer a hassle-free and chain-free move. With Part Exchange, we could buy your current home when you buy one of ours.* Ask your sales consultant to tell you more.

SUSTAINABILITY & SOCIAL RESPONSIBILITY

Our approach to Environmental, Social and Governance (ESG) means we consider the wider impact of how and where we build, from reducing our own carbon footprint to supporting local communities.

We believe that better homes help create a better future — for you, your neighbourhood, and the environment. That’s why we’re working to improve the energy-efficiency of our new homes and reduce their environmental impact compared to many older properties.

Many of our new homes have features designed to help improve comfort, reduce energy bills, lower carbon emissions and support a more sustainable way of living. They also help support our alignment with the UK’s Future Homes Standard, and may include:



High-Performance
Wall Insulation



LED
Lighting



Solar panels
(photovoltaics)*



Energy-Efficient
Kitchen Appliances



Water-saving kitchen
& bathroom fittings



Mechanical Ventilation
Systems



Wastewater Heat
Recovery Systems*



Electric Vehicle (EV)
Charging Points*



Double-Glazed
Windows



Access to Cycle Lanes
& Local Amenities*



Air Source
Heat Pump*

* Subject to the housing development. To find out which features are included in homes at this development, please speak with your Dandara sales consultant.

SUPPORTING LOCAL COMMUNITIES

As well as creating great places to live, our developments help support the wider community – from investing in schools and local facilities to working with nearby businesses.

Here are some of the ways we add Social and Local Value:



SUPPORTING LOCAL JOBS

Where possible, we employ locally and work with tradespeople who live in the local area.



WORKING WITH LOCAL BUSINESSES

We partner with suppliers and services based in the local area, where we can, to help boost the regional economy.



CREATING CAREER OPPORTUNITIES

We offer apprenticeships and training to help young people build careers in construction.



GIVING BACK

We support local charities, voluntary groups and social enterprises through donations and hands-on help.



FUNDING LOCAL INITIATIVES

From sports teams to community events, we provide sponsorships and support to projects that bring people together.

We're proud to support the communities around our developments, and we're always looking for ways to create lasting benefits for residents and neighbours alike.

To learn more about our approach to sustainability and community investment, visit dandara.com/about-us/sustainability

CUSTOMER SERVICE

At Dandara we're committed to putting our customers first. From the first interaction with our sales team, to the day you move in, we're dedicated to providing the best possible service. But it doesn't end there, even after you've moved in, we will still be on hand to answer any questions you may have. In fact, over 90% of our customers would recommend us to friends and family which has earned us 5 stars for customer service from the Home Builders Federation's annual New Homes Survey.

We will keep you updated with the progress of your property and invite you to visit and attend a home demonstration so our on-site team can explain how various aspects of your new home will work.

We will also ensure move in day runs as smoothly as possible and will provide you with a comprehensive information pack that details all the working aspects of your new home. Our Customer Service team will be in touch to see how you have settled in and answer any questions you may have. You can find out more in our Customer Charter which describes our commitment to our customers and outlines the warranties and guarantees we provide with every home we build.

Please visit our website for further information.





DANDARA.COM



DISCLAIMER: The information and images contained in this document are intended to convey the concept and vision for the 'Prior's Edge' development. They are for guidance only, may alter as work progresses and do not necessarily represent a true and accurate depiction of the finished product. This brochure does not form part of any contract nor does it form any representation or warranty in relation to the Developer, its Employees, Agents or to the 'Prior's Edge' development or any of their related developments. This brochure has been published before construction work has been finalised and is designed to be illustrative of the development. Whilst these particulars are believed to be correct, their accuracy cannot be guaranteed and during the course of construction there may be some variation to them. Purchasers are given notice that: 1. These particulars do not constitute any part of an offer or contract. 2. All statements made in these particulars are made without responsibility on the part of the agent or the developer. 3. None of the statements contained in these particulars are to be relied upon as a statement or representation of fact. 4. Any intended purchaser or tenant must satisfy him/herself by inspection or otherwise as to the correctness of each of the statements contained in these particulars. 5. The developer does not make or give, nor any person in their employment has any authority to make or give any representation or warranty whatever in relation to Dandara Eastern Limited or any part of it. 6. The selling agent does not make or give, nor any person in their employment has any authority to make or give any representation or warranty whatever in relation to Dandara Eastern Limited or any part of it. 7. All photography and computer generated images are indicative only. 8. Bathroom and kitchen layouts are indicative only. 9. Floorplans and dimensions are taken from architectural drawings and are for guidance only and are subject to change. Dimensions stated are within a tolerance of plus or minus 100mm. 10. Homes are available for open market sale to purchasers, who could be private individuals or another type of purchaser (for example local authorities, housing associations or other commercial landlords), and, therefore, the mix of tenures on a development may change. Please ask a sales consultant for specific plot details.

MAR26