

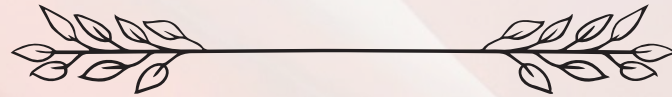


# Pembekelebek's<sup>®</sup>

*Luxury Kids Fashion*

**THE SPRING/SUMMER '26 EDIT**

*A Journey Through Timeless Elegance*



[www.pembekelebeks.com](http://www.pembekelebeks.com)

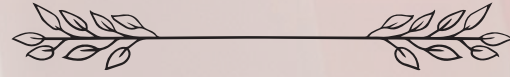


Niřanca Mah. Trkeli Cad. No:83/A Fatih İstanbul / Trkiye

*Pembekelebek's*<sup>®</sup>  
*Luxury Kids Fashion*



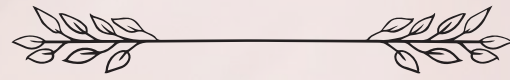
***WELCOME TO  
OUR ENCHANTED JOURNEY***



[www.pembekelebeks.com](http://www.pembekelebeks.com)

Niřanca Mah. Trkeli Cad. No:83/A Fatih İstanbul / Trkiye

## A PARTNERSHIP IN ELEGANCE



*As your partner in luxury children's fashion,  
we curate exclusive collections blending  
timeless elegance with premium craftsmanship.*

*We build lasting partnerships—ensuring  
consistent quality and reliable sizing  
to elevate your boutique's reputation.*

*From a streamlined ordering process to dedicated support,  
we guarantee a seamless experience.*



*Pembekelebek's*<sup>®</sup>  
Luxury Kids Fashion

Pembekelebek's®  
Luxury Kids Fashion

# The Parisian Promenade Collection



## THE PARISIAN PROMENADE

Embodying the grace of a bygone era,  
The Parisian Promenade Collection  
reimagines classic French sophistication  
with delicate pearls, playful bows,  
and refined silhouettes.



THE PASSAGE PROMENADE  
Galerie de Grâce



THE GARDEN PROMENADE  
Avenue des Citronniers



THE GRAND SALON  
Château de Rêves

“A whimsical stroll  
through timeless elegance.”

# The Lola

Parisian Bow & Pearl Embellished  
Satin Dress



Nostalgic Parisian elegance  
in every bow and pearl.



## The Lola Parisian Bow & Pearl Embellished Satin Dress

Model Code | 3387

Meet Lola, the true embodiment of timeless Parisian chic from our exclusive The Parisian Promenade capsule collection. Meticulously designed for little dreamers, this signature dress blends vintage charm with modern elegance for unforgettable special occasions.

### Design Details

- **Signature Fabric:** Specially produced satin featuring an elegant, all-over bow print.
- **Organza Accents:** Delicate organza ruffle collar, matching ruffled cuffs, and a voluminous tiered skirt.
- **Pearl Embellishments:** Intricate rows of pearls defining the collar edge, sleeve ruffles, and the waistline transition.

### Comfort & Structure

- **Premium Lining:** Fully lined with breathable, 100% cotton for ultimate softness against delicate skin.
- **Natural Volume:** Built-in hoopless tarlatan over the lining provides a perfectly full silhouette without restricting movement.
- **Seamless Finish:** Hidden rear zipper for easy dressing and a refined look.

### Size & Fit Info

- **Available Sizes:** 3 - 8 Years
- Model is 5 years old.
- **Colors:** Available in 6 sophisticated colorways.



### Complete The Look

Elevate the style with our perfectly coordinated accessories, including a charming organza bow headband and a printed satin handbag featuring a delicate pearl handle.



# The Belle

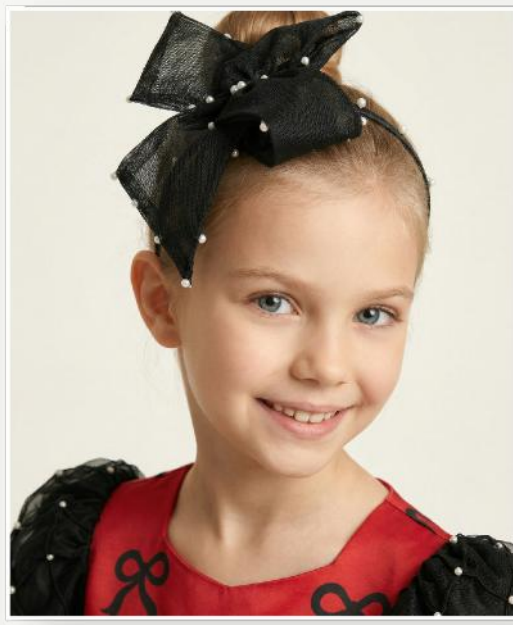
Hand-Embellished Puff Sleeve  
Satin Dress



Model Code | 3386



Bold Parisian charm woven with  
handcrafted pearl elegance.



## The Belle Hand-Embellished Puff Sleeve Satin Dress

Model Code | 3386

Meet Belle, a striking masterpiece from our exclusive The Parisian Promenade capsule collection. Meticulously designed for older girls who love a touch of drama, this signature dress blends bold vintage charm with exquisite handcraftsmanship for unforgettable special occasions.

### Design Details

- **Fabric:** Specially produced satin with an elegant all-over bow print.
- **Organza Accents:** Voluminous black puff sleeves and a detachable bow belt (hook-and-eye closure).
- **Handcrafted Details:** 100% handmade diamond-quilted pearl embroidery on the sleeves.

### Comfort & Structure

- **Premium Lining:** 100% breathable cotton lining for ultimate comfort.
- **Natural Volume:** Built-in hoopless tarlatan for a perfectly full silhouette.
- **Seamless Finish:** Hidden rear zipper for a clean, refined look.

### Size & Fit Info

- **Available Sizes:** 5 - 10 Years
- Model is 9 years old.
- **Colors:** Available in 6 sophisticated colorways.



### Complete The Look

Elevate the style with our perfectly coordinated accessories, including a handcrafted organza bow headband adorned with pearls, and a matching printed satin handbag featuring a delicate pearl handle.



# The Coco

Chic Empire Waist & Bow Printed  
Satin Baby Dress



Model Code | 3385



Petite Parisian elegance crafted  
for her sweetest moments.



## The Coco Chic Empire Waist & Bow Printed Satin Baby Dress

Model Code | 3385

Meet Coco, the epitome of innocent elegance from The Parisian Promenade capsule collection. Featuring a classic empire waist silhouette meticulously designed for your little one, this signature dress blends vintage charm with striking monochrome beauty for unforgettable moments.

### Design Details

- **Signature Cut:** Empire waist bow-printed satin bodice with a layered plain satin and transparent organza skirt.
- **Organza Accents:** Delicate collar, ruffled cuffs, and a detachable bow belt.
- **Handcrafted Details:** 100% handmade pearl rows edging the collar, cuffs, and waist bow.

### Comfort & Structure

- **Premium Lining:** 100% breathable cotton lining for ultimate comfort.
- **Natural Volume:** Built-in hoopless tarlatan for a perfectly full silhouette.
- **Seamless Finish:** Hidden rear zipper for a clean, refined look.

### Size & Fit Info

- **Available Sizes:** 1 - 5 Years
- Model is 3 years old.
- **Colors:** Available in 6 sophisticated colorways.



### Complete The Look

Elevate the style with our perfectly coordinated accessories, including a handcrafted organza bow headband adorned with pearls, and a matching printed satin handbag featuring a delicate pearl handle.



Pembekelebek's®  
Luxury Kids Fashion

The  
Floral  
Reverie  
Collection



Pembekelebek's®  
Luxury Kids Fashion

# THE FLORAL REVERIE COLLECTION

*A Poetic Awakening of Spring*

*The Floral Reverie collection captures the ethereal beauty of a sunlit garden.*



*Each piece interweaves hand-painted watercolor florals, luxurious feather trims, and sparkling crystal drops into wearable art.*



*Ultimately, it is a graceful celebration of pristine innocence and timeless French sophistication.*



*“Where vintage romance blooms into timeless grace....”*

# The Juliette

Signature Rose Print & Crystal Drop  
Organza Dress



Model Code | 3402

A poetic masterpiece of  
vintage romance and  
ethereal sparkling grace.



## The Juliette Signature Rose Print & Crystal Drop Organza Dress

Model Code | 3402

Meet Juliette, the endlessly romantic silhouette of The Floral Reverie. Featuring hand-painted watercolor roses, an organza overlay with hanging crystal drops, and a floral waist trim, this gown is meticulously crafted for enchanting garden celebrations and cherished moments.

### Design Details

- **Artistic Overlay:** Scalloped pudra-pink organza overlay detailed with hanging pear-shaped crystal drops.
- **Sculptural Sleeves:** Voluminous sheer puff sleeves in matching organza for romantic sophistication.
- **Refined Accents:** A detachable floral waist trim, tailored bow, and crystal drops complete the look.

### Comfort & Structure

- **Premium Lining:** Fully lined with 100% breathable cotton, ensuring all-day comfort against delicate skin.
- **Natural Volume:** A built-in hoopless tarlatan creates a beautifully full silhouette while allowing effortless movement.
- **Seamless Finish:** A hidden rear zipper and tailored bodice ensure a refined couture finish.

### Size & Fit Info

- **Available Sizes:** 5- 10 Years
- Model is 5 years old.
- **Colors:** Available in 2 signature watercolor rose prints.



### Complete The Look

Elevate the look with matching accessories: a layered 3D flower headband and a rose-print pearl-handle bag for a custom, refined appearance.



# The Odette

Watercolor Floral & Feather Trim  
Organza Dress



Model Code | 3401

A romantic masterpiece of  
blooming watercolor florals and  
ethereal grace.





## The Odette Watercolor Floral & Feather Trim Organza Dress

Model Code | 3401

Meet Odette, the artistic and breathtaking silhouette of The Floral Reverie. Featuring hand-painted watercolor florals, delicate feather trims, and scattered 3D petals, this exquisite gown is meticulously crafted for enchanting garden parties and cherished moments.



### Design Details

- **Artistic Overlay:** An airy organza overlay featuring watercolor florals and scattered 3D petals for a poetic effect.
- **Sculptural Sleeves:** Voluminous sheer puff sleeves adding romantic sophistication to the silhouette.
- **Refined Accents:** A luxurious feather trim, pearl-lined hem, and detachable flower brooch complete the look.



### Comfort & Structure

- **Premium Lining:** Fully lined with 100% breathable cotton, ensuring all-day comfort against delicate skin.
- **Natural Volume:** A built-in hoopless tarlatan creates a beautifully full silhouette while allowing effortless movement.
- **Seamless Finish:** A hidden rear zipper and tailored bodice ensure a refined couture finish.



### Size & Fit Info

- **Available Sizes:** 5- 10 Years
- Model is 5 years old.
- **Colors:** Available in 2 signature watercolor tones



### Complete The Look

Elevate the charm with matching accessories: a layered floral headband, an organza bag, and a detachable feather belt and flower brooch for a custom, refined look.



# The Chloé

Whimsical Bow-Print & Organza  
Puff Sleeve Dress



Model Code | 3400

A soft breeze of  
pastel elegance with  
playful charm.





## The Chloé Whimsical Bow-Print & Organza Puff Sleeve Dress

Model Code | 3400

Meet Chloé, the playful yet endlessly elegant silhouette of The Floral Reverie. Featuring enchanting pastel bow motifs and an airy organza overlay, this beautiful dress is meticulously crafted for graceful twirls, sunny garden strolls, and joyful celebrations.

### Design Details

- **Signature Overlay:** An airy organza overlay gracefully veiling pastel bow motifs for a magical, multi-dimensional effect.
- **Elegant Sleeves:** Voluminous sheer puff sleeves adding playful sophistication to the silhouette.
- **Refined Accents:** A tailored satin sash bow and delicate pearls complete the whimsical look.

### Comfort & Structure

- **Premium Lining:** Fully lined with 100% breathable cotton, ensuring all-day comfort against delicate skin.
- **Natural Volume:** A built-in hoopless tarlatan creates a beautifully full silhouette while allowing effortless movement.
- **Seamless Finish:** A hidden rear zipper and tailored bodice ensure a refined couture finish.

### Size & Fit Info

- **Available Sizes:** 5- 10 Years
- Model is 5 years old.
- **Colors:** Available in 3 ethereal pastel colorways.



### Complete The Look

Elevate the charm with matching accessories: a pearl-adorned fabric headband, a bow-print pearl-handle bag, and detachable bow brooches for a custom, refined look.



# The Elodie

Signature Fairy Illusion & Stardust  
Organza Dress

Model Code | 3399

Ethereal magic for her  
unforgettable moments.





## The Elodie Signature Fairy Illusion & Stardust Organza Dress

Model Code | 3399

Meet Elodie, the star piece of The Floral Reverie. Blending ethereal charm with fairy-tale magic, this breathtaking masterpiece is meticulously crafted for her birthdays and most cherished milestones. A silhouette designed not just to be worn, but to be remembered forever.

### Design Details

- **Signature Overlay:** An ethereal organza overlay gracefully veiling an exclusive fairy illustration.
- **Architectural Sleeves:** Diamond-lattice sheer puff sleeves offering a touch of modern, structural elegance.
- **Stardust Embellishments:** Meticulously placed pearls and sequins create a magical "stardust" effect with every twirl.

### Comfort & Structure

- **Premium Lining:** Fully lined with breathable, 100% cotton for ultimate softness against delicate skin.
- **Natural Volume:** Built-in hoopless tarlatan over the lining provides a perfectly full silhouette without restricting movement.
- **Seamless Finish:** Hidden rear zipper for easy dressing and a refined look.

### Size & Fit Info

- **Available Sizes:** 5- 10 Years
- Model is 5 years old.
- **Colors:** Available in our signature Cappuccino Blush.



### Complete The Look

Elevate the magic with perfectly coordinated accessories: an iridescent, tonal sequin headband and a matching fairy-print organza handbag with a signature pearl handle.



# The Pearlescent Soirée Collection



Pembekelebek's®  
Luxury Kids Fashion

# THE PEARLESCENT SOIRÉE COLLECTION

*A Luminous Twilight Celebration*

*The Pearlescent Soirée collection captures the luminous magic of a twilight mansion.*



*Each piece interweaves shimmering floral jacquards, delicate pearl accents, and voluminous organza layers into wearable poetry..*



*Ultimately, it is a graceful celebration of joyful innocence and the exquisite charm of quiet luxury.*



*“Where twilight magic shimmers with pearlescent grace..”*

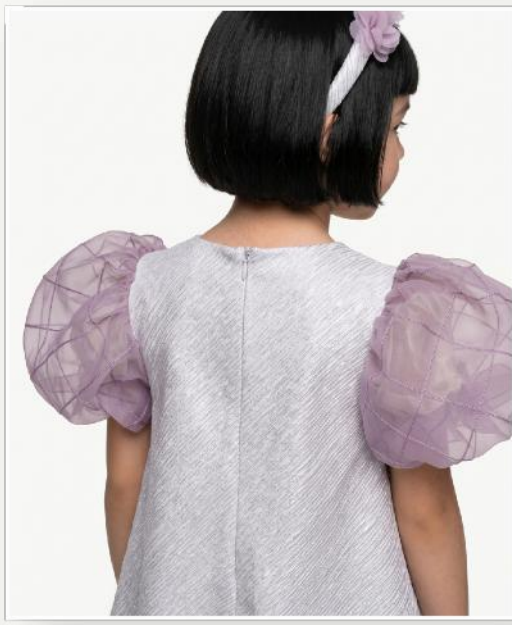
# The Liana

Shimmering Textured Jacquard  
A-line Gown

Model Code | 3393

A modern masterpiece of  
textured shimmer, woven with  
delicate blooms and modern grace.





## The Liana Shimmering Textured Jacquard A-line Dress

Model Code | 3393

Meet Liana, the modernly poised silhouette of The Pearlescent Soirée. Featuring a textured shimmering jacquard A-line body with intricate patterned short puff sleeves, a diagonal cascade of soft lavender petals, and a minimalist sheath back, this dress is meticulously crafted for refined celebrations and sophisticated moments.

### Design Details

- **Luminous Jacquard:** Shimmering plissé jacquard bodice with a diagonal vine of lavender fabric petals.
- **Ethereal Skirt:** Voluminous short puff sleeves with intricate lattice-quilted patterns in lavender thread.
- **Refined Accents:** Minimalist shift silhouette with a hidden rear zipper for a sleek, modern finish.

### Comfort & Structure

- **Premium Lining:** Fully lined with 100% breathable cotton, ensuring all-day comfort against delicate skin.
- **Natural Structure:** Tailored A-line jacquard creates an elegant silhouette while allowing effortless movement.
- **Seamless Finish:** A hidden rear zipper and tailored inner seams ensure a refined, couture-quality finish.

### Size & Fit Info

- **Available Sizes:** 5-10 Years
- Model is 5 years old.
- **Colors:** Available in shimmering silver and lavender.



### Complete The Look

Elevate the look with matching accessories: a padded shimmering headband and a delicate chain-strap purse for a custom, refined appearance.



# The Elara

Pearlescent Jacquard & Organza  
Bolero Dress Set



Model Code | 3395

A luminous vision of modern elegance,  
woven with pearlescent innocence and  
twilight grace.





## The Elara Pearlescent Jacquard & Organza Bolero Dress Set

Model Code | 3395

Meet Elara, the endlessly elegant silhouette of The Pearlescent Soirée. Featuring a luminous jacquard bodice with a pearl-trimmed bolero, an airy organza skirt, and a signature 3D floral waist detail, this set is meticulously crafted for twilight celebrations and magical moments.

### Design Details

- **Luminous Jacquard:** Pearlescent bodice and matching bolero with delicate pearl collar trims.
- **Ethereal Skirt:** A multi-layered organza skirt provide a romantic, airy silhouette.
- **Refined Accents:** A detachable 3D floral waist trim and an elegant organza back bow complete this haute couture look.

### Comfort & Structure

- **Premium Lining:** Fully lined with 100% breathable cotton, ensuring all-day comfort against delicate skin.
- **Natural Volume:** A built-in hoopless tarlatan creates a beautifully full silhouette while allowing effortless playtime movement.
- **Seamless Finish:** A hidden rear zipper and tailored inner seams ensure a refined, couture-quality finish.

### Size & Fit Info

- **Available Sizes:** 4- 9 Years
- Model is 5 years old.
- **Colors:** Available in 2 signature pearlescent shades.



### Complete The Look

Elevate the look with a layered 3D flower headband, a textured pearlescent bag with a pearl handle, and delicate embroidered shoes for a custom, refined appearance.



# The Aurina

Golden Floral Jacquard & Ruffled Bib  
Tulle Gown

Model Code | 3317

A celestial masterpiece of  
vintage romance, woven with  
golden blooms and lilac mist.





## The Aurina Golden Floral Jacquard & Ruffled Bib Tulle Gown

Model Code | 3317

Meet Aurina, the endlessly romantic silhouette of The Pearlescent Soirée. Featuring a golden floral jacquard bodice with a pearl-lined tulle ruffle, a voluminous lilac tulle skirt, and a dramatic back bow, this gown is meticulously crafted for magical twilight celebrations.



### Design Details

- **Luminous Jacquard:** Floral jacquard bodice with puff sleeves and a pearl-trimmed tulle ruffle.
- **Ethereal Skirt:** Voluminous, multi-layered lilac tulle skirt for a dreamy, airy silhouette.
- **Refined Accents:** A dramatic oversized jacquard back bow completes this couture look.



### Comfort & Structure

- **Premium Lining:** Fully lined with 100% breathable cotton, ensuring all-day comfort against delicate skin.
- **Natural Volume:** A built-in hoopless tarlatan creates a beautifully full silhouette while allowing effortless playtime movement.
- **Seamless Finish:** A hidden rear zipper and tailored inner seams ensure a refined, couture-quality finish.



### Size & Fit Info

- **Available Sizes:** 1- 5 Years
- Model is 5 years old.
- **Colors:** Available in signature cappuccino-lilac palette.



### Complete The Look

Elevate the look with matching accessories: a golden floral jacquard headband, a delicate chain-strap purse, and an elegant bow brooch for a custom, refined appearance.



# The Dahlia

Golden Floral Jacquard Flared  
Pleated Gown

Model Code | 3382

A poetic masterpiece of  
golden blooms and timeless elegance.





## The Dahlia Golden Floral Jacquard Flared Pleated Gown

Model Code | 3382

Meet Dahlia, the beautifully aristocratic silhouette of The Pearlescent Soirée. Featuring a structured floral jacquard bodice, a voluminous pleated skirt, a 3D floral waistline, and an organza back bow, this gown is meticulously crafted for elegant twilight celebrations.

### Design Details

- **Luminous Jacquard:** Fully tailored floral jacquard bodice featuring delicate short puff sleeves.
- **Ethereal Skirt:** A voluminous, sharply pleated jacquard skirt designed for a majestic, structured silhouette.
- **Refined Accents:** A signature 3D floral waist belt and an oversized sheer organza back bow complete this couture look.

### Comfort & Structure

- **Premium Lining:** Fully lined with 100% breathable cotton, ensuring all-day comfort against delicate skin.
- **Natural Volume:** A built-in hoopless tarlatan creates a beautifully full silhouette while allowing effortless playtime movement.
- **Seamless Finish:** A hidden rear zipper and tailored inner seams ensure a refined, couture-quality finish.

### Size & Fit Info

- **Available Sizes:** 5-10 Years
- Model is 7 years old.
- **Colors:** Available in signature cappuccino-lilac palette.



### Complete The Look

Elevate the look with matching accessories: a golden floral jacquard headband and a delicate chain-strap purse for a custom, refined appearance.





Le  
**Rêve**  
Blanc

# LE RÊVE BLANC

*A Poetic Finale to the Spring Symphony*



*As the golden hour approaches and the sun dips below the horizon, Le Rêve Blanc emerges as the ultimate symbol of purity and rebirth.*



*Designed as a standalone masterpiece to close our spring collection, this ecru gown captures the fleeting, magical light of twilight.*



*From the grand marble pillars of a timeless château to a whimsical studio blooming with giant paper florals, our journey concludes in the sculpted shadows of a sun-kissed courtyard, embracing the unpredictable magic of spring.*

*It is a wearable poem, a sculpted dream of tulle and flora, marking the graceful close of an unforgettable journey.*

# The Celeste

Jacquard Bodice & Floral Adorned  
Tulle Ballgown

*Pembekelebek's*<sup>®</sup>  
Luxury Kids Fashion

Model Code | 3300

Sculpted from light and tulle,  
for the moments she'll cherish forever.





## The Celeste Jacquard Bodice & Floral Adorned Tulle Ballgown

Model Code | 3300

Meet Celeste, the breathtaking finale of our collection. Embodying ethereal grace under Le Rêve Blanc, this ecru masterpiece features dimensional floral appliqué, a sweeping tulle silhouette, and a poetic charm that turns every step into a graceful dance.

### Design Details

- **Signature Bodice:** Premium jacquard-textured bodice adorned with dimensional, handcrafted floral appliqué along the neckline.
- **Ethereal Sleeves:** Delicate, voluminous sheer tulle sleeves that add a touch of whimsy.
- **Versatile Accents:** Detachable floral waist brooch and scattered pearls. Restyleable across the gown.

### Comfort & Structure

- **Premium Layering:** Fully lined with 100% breathable cotton for ultimate softness against delicate skin.
- **Architectural Volume:** Masterful layering of a hoopless tarlatan, silky satin, and soft inner tulle.
- **Sculpted Hem:** Finished with a structured crinoline braid to maintain a flawless bell silhouette.

### Size & Fit Info

- **Available Sizes:** 6 - 10 Years
- Model is 7 years old.
- **Colors:** Exclusive in Ethereal Ecru.



### Complete The Look

Elevate this dreamy silhouette with our perfectly coordinated handcrafted accessories, including detachable floral brooch, a floral appliqué headband and a matching tulle handbag featuring an elegant pearl handle.



# *Pembekelebek's*<sup>®</sup>

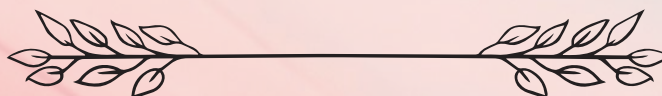
*Luxury Kids Fashion*

## A Note on Editorial Imagery



The visual atmospheres and modeling in this catalog are digitally crafted to showcase the artistic vision of our physical garments.

While every effort is made to accurately represent our designs, slight variations in color, texture, or fit may occur in actual production.



Art Direction & Digital Production by Nova Solai

[www.novasolai.com](http://www.novasolai.com)



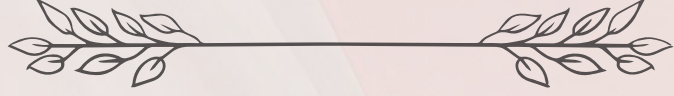
**NOVA SOLAI**

DIGITAL GROWTH & CREATIVE AGENCY

# Pembekelebek's®

*Luxury Kids Fashion*

## Contact Us



pembekelebeks@hotmail.com

+90 534 770 29 79

## Follow Us



www.pembekelebeks.com

@pembekelebeks

## Visit Us



Nişanca Mah. Türkeli Cad. No:83/A Fatih  
Istanbul / Türkiye



© 2026 Pembekelebek's  
All rights reserved.

No part of this catalog, including images, texts, and designs, may be reproduced or used without prior written permission.