



**MARCO  
INDUSTRIES™**

**Roofing Ventilation & Accessories**

**PRODUCT CATALOG**



# KEEPING YOUR ROOF AND EVERYTHING UNDERNEATH SAFE

**M**arco Industries has demonstrated its value-based commitment to its customers, from the products we offer to the service we provide. Put simply, it drives everything we do.

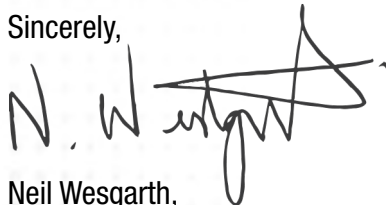
We take seriously our brand promise to customers, which is, value through the roof. By focusing on value-added solutions and services we've been able to grow the breadth of our product offering to an industry leading level.

Our product catalog contains the Marco Weather-Tite Roof System™, a comprehensive line of quality products offering easy installation, remarkable building ventilation resulting in lower energy costs and outstanding warranties. From superior material characteristics to overall product quality, convenient installation and packaging, the Weather-Tite Roof System™ focuses on the business solutions our customers' seek.

Our dedication to customer service and product excellence has resulted in Marco being awarded Rural Builders Gold Key awards year-after-year, plus multiple Top 10 Product Awards.

Your business is valued at Marco. Thank you for joining us on our continuous journey to develop and deliver value-added products and services for the Metal Roofing Industry.

Sincerely,



Neil Wesgarth,  
President

## Investing in Quality

For more than 30 years, we have made the best ventilation and accessories for all roofs. This competitive advantage allows us to use specially formulated polyester in our ventilation products - manufactured from recycled material - to prevent moisture absorption and to help keep dust, dirt, and bugs out of your attic. Marco's ventilation line offers several options when it comes to ridge vents or static vents. Our full and innovative line offers venting solutions that are environmentally friendly while offering superior performance and easy installation.

## Tested Tough

We invest heavily in testing to ensure our products are safe, reliable and consistently high quality. Our ongoing partnership with one of the nation's leading materials and product qualification testing labs augments Marco's own internal quality control measures and performance testing. Accredited by A2LA/ISO 17025 and others, the lab tests Marco against competitive products to validate performance, durability, quality and additional important measures. This data is not only used by our engineers in product development, it provides third-party confirmation of our products' superior performance. Which is why Marco products always come with a little something extra: peace of mind.

## Perfectly Positioned to Deliver

Our corporate headquarters and almost 220,000 square feet of made in the USA manufacturing and warehousing are centrally located in Tulsa, Oklahoma. From here, and through several distribution facilities across North America, we deliver Marco quality coast to coast.

# PRODUCT TABLE OF CONTENT

## VENTILATION

**LP2 Ridge Vent**  
pages 6-7



**Flexpro Ridge Vent**  
Profile Venting Material  
pages 8-11



**Flex-O-Vent**  
Universal Venting Material  
pages 12-13



**Metal Gooseneck Vent**  
pages 14-15



**Python Weather-Tite Roll Ridge Vent**  
pages 16-17



**High Profile Dryer Vent**  
pages 18-19



**PythonPro 4ft. Ridge Vent**  
pages 20-21



**45 Intake Vent**  
page 22-23



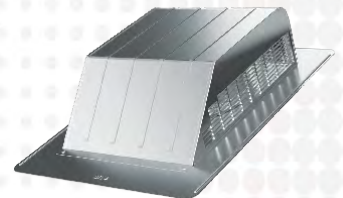
**Shingle Gooseneck**  
pages 24-25



**Shingle Off-Ridge Vent**  
pages 26-27



**50 Slant Back Vent**  
page 29



**50 Square Vent**  
pages 30-31



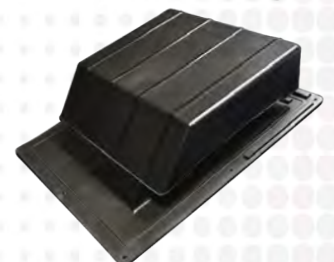
**Weather-Tite 60 Square Vent**  
pages 32-33



**150 Round Vent**  
pages 34-35



**65 Slant Back Vent**  
pages 36-37



**Low Profile Dryer Vent**  
pages 38-39



# PRODUCT TABLE OF CONTENT

**Standing Seam Vent**  
pages 46-47



**Universal Tile Ridge Vent**  
pages 40-41



**Tile Gooseneck Vent**  
pages 42-43



**Tile Off-Ridge Vent**  
pages 44-45



## CLOSURE

**Closure Foam**  
pages 48 - 49



**Anglekut Beveled Closure System**  
pages 50-51

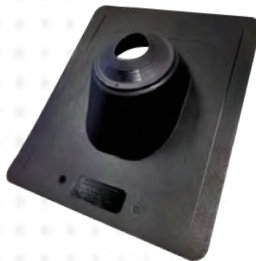


## FLASHING

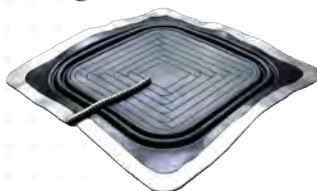
**Valley Cap**  
pages 52 - 53



**Bathroom Pipe Flashing**  
pages 54



**Metal Roof Multi-Flash Sealing Vent Adapter**  
pages 55



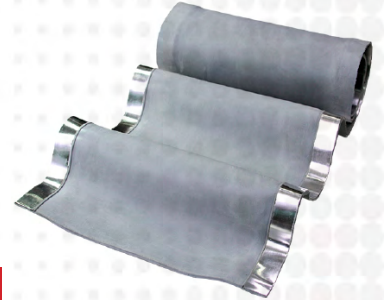
**Universal RoofBoots**  
pages 56-57



**Master-Flex**  
page 58 - 59



**Box Gutter Expansion Joint**  
page 60



## ACCESSORIES

**Universal Foam**  
page 61



**X-Seal Expandable Foam Tape**  
page 62- 63



**RE2 Polyethylene Foam Spacer System**  
page 64- 65



**Mastix Butyl Tape**  
page 66 - 67



**Weather-Tite Metal Roof Sealant**  
page 68 - 69



**MarcoFlex Weather-Tite Gunnable Butyl**  
page 70



**Hydrashell Underlayment**  
page 72- 85



1.800.800.8590 / Marcoindustries.com





Roofing Ventilation & Accessories



# LP2™ LOW PROFILE RIDGE VENT

## ECO-FRIENDLY INVISIBLE RIDGE VENT

It fits in almost all major metal roofing pitches and profiles because of its unique shape.



### Features:

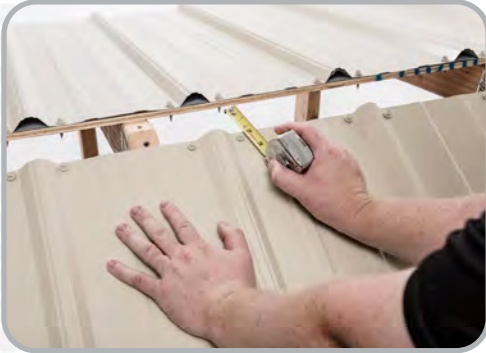
- ▶ Can be made at any angle, it will fit any metal roof profile.
- ▶ Made from crosslink polyethylene foam the same as M-Cell closures.
- ▶ Closures doesn't bleed, dry out, or dissolve with weather and UV exposure.
- ▶ 1-1/2" thick foam increases the strength of the belveled closure.
- ▶ Closures are an easy replacement for caulking and polyuethane strips.
- ▶ Anglekut Easy Order Form.

**EXPAND YOUR ROOFING SYSTEM PERFORMANCE**  
**PREVENT LEAKS • PROTECT PROPERTY • ASSURE VENTILATION**

# INSTALLATION INSTRUCTIONS

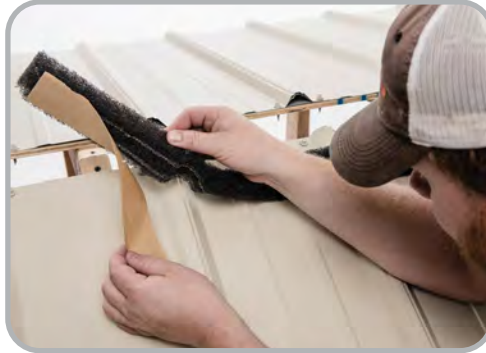
## VALUE DRIVES EVERYTHING WE DO

Value drives everything we do. That's why we developed a comprehensive line of ventilation products that offer easy installation, remarkable building ventilation, lower utility costs, extended roof deck life, extreme durability, and outstanding warranties. Get more quality, more performance, and more value...from Marco Industries.™



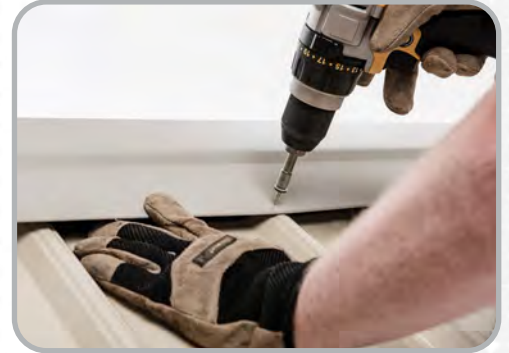
### Step 1:

Allow a 2" slot at the ridge of the metal roof for ventilation. apply the LP2 ridge vent to metal roof by removing the backing paper.



### Step 2:

Align LP2 1/2"-1" up-slope from the edge of the ridge cap. Place onto metal roof with adhesive side down. Be sure LP2 Ridge Vent is in place the first time, the adhesive makes it hard to move.



### Step 3:

To attach consecutive LP2 Vents, butt fit pieces together, sealing with Marco's Weather-Tite Metal Roof Sealant. Place ridge cap over LP2. Secure with Marco QuickGrip/QuickDrill fasteners through metal roof ridge locations, using screw bed locations to avoid penetrating the LP2 insert material.

## Specs\*

### Overall

**Net Free Area:** Varies with profile based on 17 square inches per linear foot of ventilation material

**Dimensions:** Varies with profile

**Air Permeability:** >760 cubic feet per minute

**Cold Cracking:** -25° F

**Tear & Tensile Strength:**

Machine 25 ppi / Counter 25 ppi

**Compressive Strength:** 1.8 psi at 75%

**Rain:** No leakage

### Closure Material

**Nominal Density-Skin/Skin (BS ISO 7214 1998):** 24 kg/m<sup>3</sup>

**Compression Stress-Strain (BS ISO 7214 1998)**

10% compression: 34 kPa

25% compression: 53 kPa

40% compression: 85 kPa

50% compression: 118 kPa

**Shore Hardness 00 Scale, 10 mm Cell/ Cell Thickness (ISO 868 1985):** 50 00

**Thermal Conductivity — Mean Temp of 10° C (ISO 8302 1991):** 0.0392 W/m.K

**Flammability — Automotive (FMVSS.302-Burn Rate):**

Pass 12 mm & thicker <100mm/min

**Flammability — Horizontal Burn Rate (ISO 7214 1998):** 5 mm thick, 2.1 mm/sec and 13 mm thick, 1.5 mm/sec

### Python Material

**Net Free Area:** Varies with profile based on 17 square inches per linear foot of ventilation material

**Dimensions:** Varies with profile

**Cold Cracking:** -25° F

**Compressive Strength:** 1.8 psi at 75%

**Rain:** No leakage

**Air Permeability:** (ASTM D737)

760 cubic feet per minute

**Tear & Tensile Strength:** (Tear: ASTM D1294-86, Tensile: ASTM D2261-83

Machine 25 ppi / Counter 25 ppi

**Self-Ignition Temperature:** (ASTM D1929) 963° F



1.800.800.8590 / Marcoindustries.com





# FlexPro

## PROFILE-CUT VENTING MATERIAL

Save on energy costs while protecting your building from moisture, pests and dust with FlexPro™ exclusively from Marco.

# Ridge Vent



### Features:

- ▶ Effective rib-cut profile fits most metal roofs.
- ▶ High density ensures quick, full material recovery after installation.
- ▶ Eliminates condensation and prevents moisture, pest and dust from entering the structure.
- ▶ Easy, one-person installation.
- ▶ Reduces utility bills through added attic ventilation.
- ▶ 2 beads of M63 Marco proprietary adhesive for superior hold.
- ▶ Available in box or roll quantities.
- ▶ A profile-cut strip or roll designed to fit most roof panels.
- ▶ Green Product.

**EXPAND YOUR ROOFING SYSTEM PERFORMANCE**  
**PREVENT LEAKS • PROTECT PROPERTY • ASSURE VENTILATION**

# INSTALLATION INSTRUCTIONS

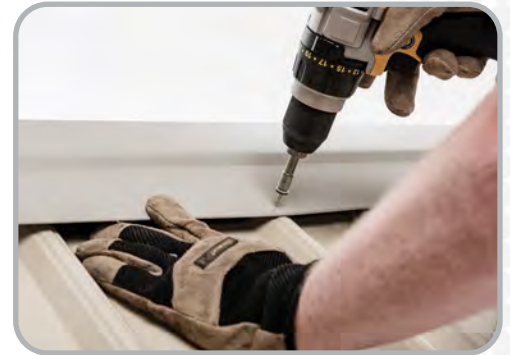
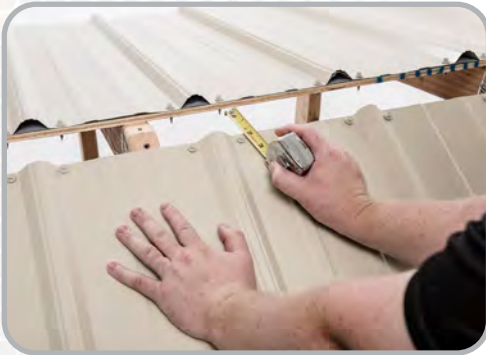
## VALUE DRIVES EVERYTHING WE DO

Value drives everything we do. That's why we developed a comprehensive line of ventilation products that offer easy installation, remarkable building ventilation, lower utility costs, extended roof deck life, extreme durability, and outstanding warranties. Get more quality, more performance, and more value...from Marco Industries.™

## EASY INSTALL

See our installation online at [marcoindustries.com](http://marcoindustries.com)

To install FlexPro, simply peel and stick the product to the metal roof, careful to match the custom-cut contours to roof ridges. Next put the ridge cap in place and fasten down-slope from the FlexPro product (shown below):



### Step 1:

Flexpro comes in various panel configurations, roll and stick package options. apply the Flexpro ridge vent to metal roof by removing the backing paper.

### Step 2:

Align the FlexPro Ridge Vent 1/2"-1" up-slope from the edge of the ridge cap. Place onto metal roof with adhesive side down. Note that the adhesive is strong and once put in place it will be hard to move. Be sure the FlexPro Ridge Vent is in place the first time.

### Step 3:

When attaching consecutive FlexPro Vents, butt fit the pieces together. Marco Weather-Tite Metal Roof Sealant can be used to seal the butt joint. Place ridge cap over FlexPro. Secure in place with Marco QuickGrip/QuickDrill fasteners; fasten through the metal roof ridge locations, avoiding penetrating the FlexPro material, using a min. 3300 rpm screw gun.

### SPECS:

**Net Free Area:** FlexPro Panel Fit - 1-1/8" free-standing product, NFA 26 sq. in.\*

**Available in:** 3' stick, 20' and 50' rolls

**Air Permeability:** >800 cubic feet per minute

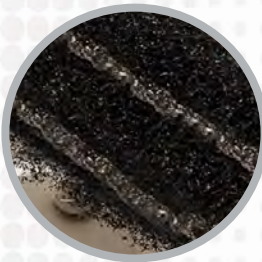
**Tear Strength:** 3.5 ppi

**Tensile Strength:** 16 psi – Elongation 175%

**Compressive Strength:** 1.8 psi at 75%

**ASTM Testing:** D1929, D737

\*Effective Net Free Area varies based on product height, panel profile, and installation methods.



Marco's proprietary M63 continuous double-bead adhesive is key to quick, easy FlexPro installation.



1.800.800.8590 / [Marcoindustries.com](http://Marcoindustries.com)





Roofing Ventilation & Accessories



# FlexPro Ridge Vent

## PROFILE-CUT VENTING MATERIAL

Save on energy costs while protecting your building from moisture, pests and dust with FlexPro,™ exclusively from Marco.

**NEW 3" INCH  
PRODUCT PROFILE**



### Features:

- ▶ Effective rib-cut profile fits most metal roofs.
- ▶ High density ensures quick, full material recovery after installation
- ▶ Eliminates condensation and prevents moisture, pest and dust from entering the structure.
- ▶ Easy, one-person installation.
- ▶ Reduces utility bills through added attic ventilation.
- ▶ 2 beads of M63 Marco proprietary adhesive for superior hold.
- ▶ Available in box or roll quantities.
- ▶ A profile-cut strip or roll designed to fit most roof panels.
- ▶ Green Product.

**EXPAND YOUR ROOFING SYSTEM PERFORMANCE**  
**PREVENT LEAKS • PROTECT PROPERTY • ASSURE VENTILATION**

# INSTALLATION INSTRUCTIONS

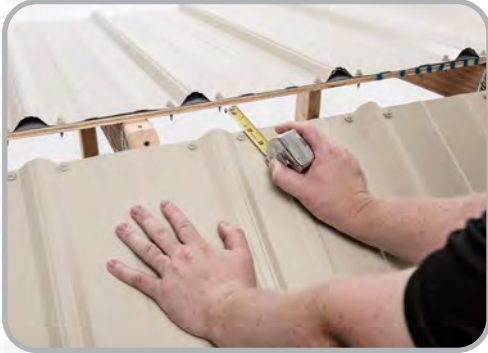
## VALUE DRIVES EVERYTHING WE DO

Value drives everything we do. That's why we developed a comprehensive line of ventilation products that offer easy installation, remarkable building ventilation, lower utility costs, extended roof deck life, extreme durability, and outstanding warranties. Get more quality, more performance, and more value...from Marco Industries.™

## EASY INSTALL

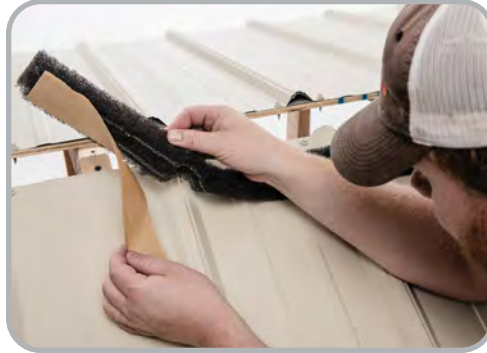
See our installation online at [marcoindustries.com](http://marcoindustries.com)

To install FlexPro, simply peel and stick the product to the metal roof, careful to match the custom-cut contours to roof ridges. Next put the ridge cap in place and fasten down-slope from the FlexPro product (shown below):



### Step 1:

Flexpro comes in various panel configurations, roll and stick package options. apply the Flexpro ridge vent to metal roof by removing the backing paper.



### Step 2:

Align the FlexPro Ridge Vent 1/2"-1" up-slope from the edge of the ridge cap. Place onto metal roof with adhesive side down. Note that the adhesive is strong and once put in place it will be hard to move. Be sure the FlexPro Ridge Vent is in place the first time.



### Step 3:

When attaching consecutive FlexPro Vents, butt fit the pieces together. Marco Weather-Tite Metal Roof Sealant can be used to seal the butt joint. Place ridge cap over FlexPro. Secure in place with Marco QuickGrip/QuickDrill fasteners; fasten through the metal roof ridge locations, avoiding penetrating the FlexPro material, using a min. 3300 rpm screw gun.

### SPECS:

**Net Free Area:** FlexPro Panel Fit - 3" free-standing product, NFA 26 sq. in.\*

**Available in:** 3' stick, 20' and 50' rolls

**Air Permeability:** >800 cubic feet per minute

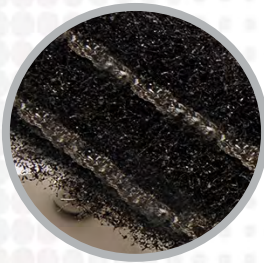
**Tear Strength:** 3.5 ppi

**Tensile Strength:** 16 psi – Elongation 175%

**Compressive Strength:** 1.8 psi at 75%

**ASTM Testing:** D1929, D737

\*Effective Net Free Area varies based on product height, panel profile, and installation methods.



Marco's proprietary M63 continuous double-bead adhesive is key to quick, easy FlexPro installation.



1.800.800.8590 / [Marcoindustries.com](http://Marcoindustries.com)





Roofing Ventilation & Accessories



# Flex-O-Vent



## PROTECTS & LAST LIKE NO OTHER

Flex-O-Vent is a long-term air flow solution, that lowers utility costs, complies with building codes, and decreases the damage that improper ventilation can do to buildings.



### Features:

- ▶ Won't absorb moisture, which can freeze and block all ventilation
- ▶ M63 Marco proprietary adhesive for superior hold
- ▶ Prevents moisture, pest and dust from entering the structure
- ▶ Easy, one-person installation.
- ▶ ASTM testing: D1929, D737
- ▶ Most economical polyester-based ventilation product.
- ▶ Available in 10' and 20' rolls and multiple packaging options
- ▶ 40-year limited warranty
- ▶ Green Product

**EXPAND YOUR ROOFING SYSTEM PERFORMANCE**  
**PREVENT LEAKS • PROTECT PROPERTY • ASSURE VENTILATION**

# INSTALLATION INSTRUCTIONS

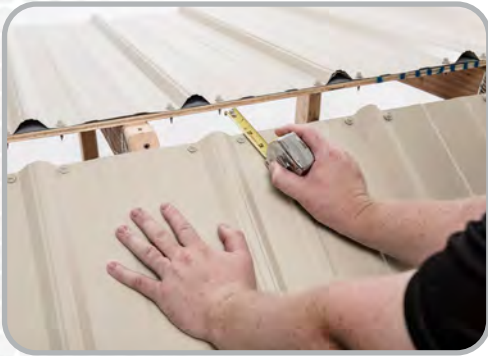
## VALUE DRIVES EVERYTHING WE DO

Value drives everything we do. That's why we developed a comprehensive line of ventilation products that offer easy installation, remarkable building ventilation, lower utility costs, extended roof deck life, extreme durability, and outstanding warranties. Get more quality, more performance, and more value...from Marco Industries.™

## EASY INSTALL

See our installation online at [marcoindustries.com](http://marcoindustries.com)

With Flex-O-Vent, one size fits most panels. Installation is a simple three-step process easily handled by one installer. Flex-O-Vent comes in easy-to-handle 10-foot rolls (mirroring most ridge cap lengths) or larger 20-foot rolls if you prefer. It is easily cut with scissors or utility knife and a double bead of M63 adhesive holds Flex-O-Vent securely in place until the ridge cap is installed.



### Step 1:

Make sure panel is free of dust and debris. If not pre-cut, cut 2" slot at ridge. Measure and mark where the ridge cap will sit on the panel.



### Step 2:

Start from the end of the ridge, rolling out Flex-O-Vent along the length of the ridge (both sides), making sure the vent sits "up-slope" from the edge of the ridge cap.



### Step 3:

Apply ridge cap, compressing material between the ridge cap and major rib. Fasten at the major rib using a screw gun set to at least 2700 rpm.

## SPECS:

**Net Free Area:** FOV - 1" free-standing product, NFA 23 sq. in.\*

1-1/2" x 3" x 10': Rib heights up to 1-1/4"

1-1/2" x 2" x 10': Rib heights up to 1-1/4"

1" x 3" x 10': Rib heights up to 3/4"

1" x 2" x 10': Rib heights up to 3/4"

**Air Permeability:** >760 cubic feet per minute

**Cold Cracking:** -55° C (-130° F)

**Compression Strength:** 1.8 psi at 75%

**Tensile Strength:** 16 psi – Elongation 175%

**Tear Strength:** 3.5 ppi

**Abrasion:** No Damage

\*Effective Net Free Area varies based on product height, panel profile, and installation methods

Marco's proprietary M63 continuous double-bead adhesive is key to quick, easy Flex-O-Vent installation.



**FLEX-O-VENT**



1.800.800.8590 / [Marcoindustries.com](http://Marcoindustries.com)

**MARCO INDUSTRIES**  
Roofing Ventilation & Accessories

# Metal Roofing Gooseneck Vent

## EXCELLENT VENTILATION

Built with durability, reliability  
and passed the Standard TAS  
100 Wind-Driven Rain Test



**X** Not to be Used as a Laundry Vent.

### Features:

- ▶ Built in water-tight damper duct that is fast to open and close.
- ▶ Suitable for metal roofs.
- ▶ Keeps rodents and birds out.
- ▶ Promotes superior airflow and makes it ideal for kitchen or bathroom exhausts.
- ▶ Marco's Metal Gooseneck Vent is made with rugged 26 gauge galvalume metal.
- ▶ Suitable for any roof pitch from 3/12 to 12/12.
- ▶ High Quality & Durability - Reduces customer call-backs.

**EXPAND YOUR ROOFING SYSTEM PERFORMANCE**  
**PREVENT LEAKS • PROTECT PROPERTY • ASSURE VENTILATION**

# INSTALLATION INSTRUCTIONS

## VALUE DRIVES EVERYTHING WE DO

Value drives everything we do. That's why we developed a comprehensive line of ventilation products that offer easy installation, remarkable building ventilation, lower utility costs, extended roof deck life, extreme durability, and outstanding warranties. Get more quality, more performance, and more value...from Marco Industries.™

## EASY INSTALL

See our installation online at [marcoindustries.com](http://marcoindustries.com)

- 1 Location of vent: It is recommended to position the vent on roof deck directly above location of the exhaust tube or opening in roof deck.
2. Position and Secure: Fasten vent over sub roofing membrane with 1 ¼" galv. Roofing nails or pan head screws through the vent flanges at provided holes spaced no more than 4" apart.
3. Seal flanges to sub roofing membrane as recommended by membrane manufacturer.
4. Cut metal roof panel to fit tightly around body of vent and test fit before applying sealant. Once satisfied with the way the panel fits around the vent, remove panel in preparation for final install.
5. Apply a liberal amount of tripolymer sealant or other approved metal roof sealant on flanges around body of the vent in a manner as to insure a complete bond of sealant to the underside of the roof panel. It is preferable to use a sealant with a color that matches the panel color.
6. Cut tile to fit around vent and install per tile manufacturer recommendations.
6. Install precut metal roof panel and press into the sealant so that the panel and sealant create a complete bond. There will be some ooze out of sealant at the body of the vent. Tool in the sealant at the body of the vent to cover the edge of the panel cut out. You may need to add some sealant to accomplish this task. It is important to be consistent with this tooling process for a neat and aesthetically pleasing finish.

*Note: Some metal roof mechanics may want to use an alternative attachment method such as mechanical fasteners or cleating the panel. These methods are acceptable as long as proper sealing is incorporated in the process.*

**Metal  
Gooseneck  
Vent**



### SPECS:

**Dimensions:** Width 16 1/2" x Height 9 1/2"

**Material:** 26 - gauge galvalume

**Codes & Standards:** FL Building Code, patents pending

**Roof Pitch:** Conforms to any pitch from 3/12" to 12/12"

**Color:** Galvalume and other colors available

**Sizes:** 4", 6" and 10"



**X Not to be Used as a Laundry Vent.**

# Python Weather-Tite™ Rolled Ridge Vent

**KEEPING YOUR ATTIC  
COOL, DRY & VENTILATED**

The Rolled Ridge Vent is economical, quick to install and will keep out insects, dust and moisture, extending the life of your roof.

**NAILS  
INCLUDED**

**LIMITED  
LIFETIME  
WARRANTY**

## Features:

- ▶ Resists damage from ice, hail, and other weather. No warping and less loosening problems
- ▶ Installer friendly, its light flexible and comes in 20' and 50' rolls
- ▶ No waste. Cut and use what you need
- ▶ Effectively Blocks - Insects, bats, birds, and wind borne debris, dust and dirt
- ▶ No clogs, deterioration, or dirt and snow snow trapping
- ▶ Prevents mold and mildew
- ▶ Reduces air conditioning maintenance costs
- ▶ Eliminates damaging ice dams in winter
- ▶ Extend shingle and roof deck life

**EXPAND YOUR ROOFING SYSTEM PERFORMANCE**  
**PREVENT LEAKS • PROTECT PROPERTY • ASSURE VENTILATION**

# INSTALLATION INSTRUCTIONS

## VALUE DRIVES EVERYTHING WE DO

Value drives everything we do. That's why we developed a comprehensive line of ventilation products that offer easy installation, remarkable building ventilation, lower utility costs, extended roof deck life, extreme durability, and outstanding warranties. Get more quality, more performance, and more value...from Marco Industries.™

## EASY INSTALL

See our installation online at [marcoindustries.com](http://marcoindustries.com)

1. Use on a minimum 3/8" (10 mm) plywood or OSB decking.
2. Cut a 2" (51 mm) slot along the ridge, 1" (25.4 mm) on each side. Leave uncut (closed) sheathing area of 6" (152 mm) at each end of the ridge. Cut through sheathing only, avoiding roof trusses. (In houses with a ridgeboard, cut 3 1/2" (89 mm) slot, 1 3/4" on each side.
3. Where short ridges (dormers, ridge intersections) are used, mark and cut the slot and make sure that the end of the opening stops at least 12" (305 mm) from the ridge intersection.
4. Uncoil Python Single Layer Vent along the entire length of the ridge, covering uncut 6" (152mm) sheathing area on both ends. Shorter lengths can be joined by caulking and butting the end.
5. Install cap shingles directly over Python Single Layer Vent. Use included 1 3/4" (44.4mm) coil nails. Python Single Layer Vent has a 3/4" (19.1mm) nominal thickness. Be sure not to crush or compress the vent during installation.

## SPECS:

**Net Free Venting Area:** 3/4" thick: 17.5 sq. in. per lineal foot of ridge

**Ridge Vent Roll Sizes:** 3/4" x 8" x 20', 3/4" x 10.5" x 20' 3/4" x 11.75" x 20', 3/4" x 10.5" x 50', 3/4" x 11.75" x 50'

**Material:** Highly durable and high performing non-woven, non-wicking modified polyester. Made with over 90% recycled plastic and 30% post-consumer content

**Codes & Standards:** FBC, and CSA approvals

**Color:** Dark Grey

**Nails:** Coil of 1 3/4" Nails (Nails included)

**Roof Pitch:** Conforms to any pitch from 2/12 to 20/12

**Pack Unit of Measurement:** 1 per bag

**Air Permeability:** (ASTM D737) 760 cubic/minute

**Tear Strength:** ASTM D1294-86

**Tensile Strength:** ASTM D2261-83, Machine 25 ppi / Counter 25 ppi

**Cold Crack Resistance:** (GLIT C115) -25°F

**Snow Infiltration:** (CRL 5704) Zero

**Self-Ignition Temperature:** (ASTM D1929) 963°F

**Weathering:** UV stable, polyester composite

**Maintenance:** Properly installed, maintenance free



1.800.800.8590 / [Marcoindustries.com](http://Marcoindustries.com)



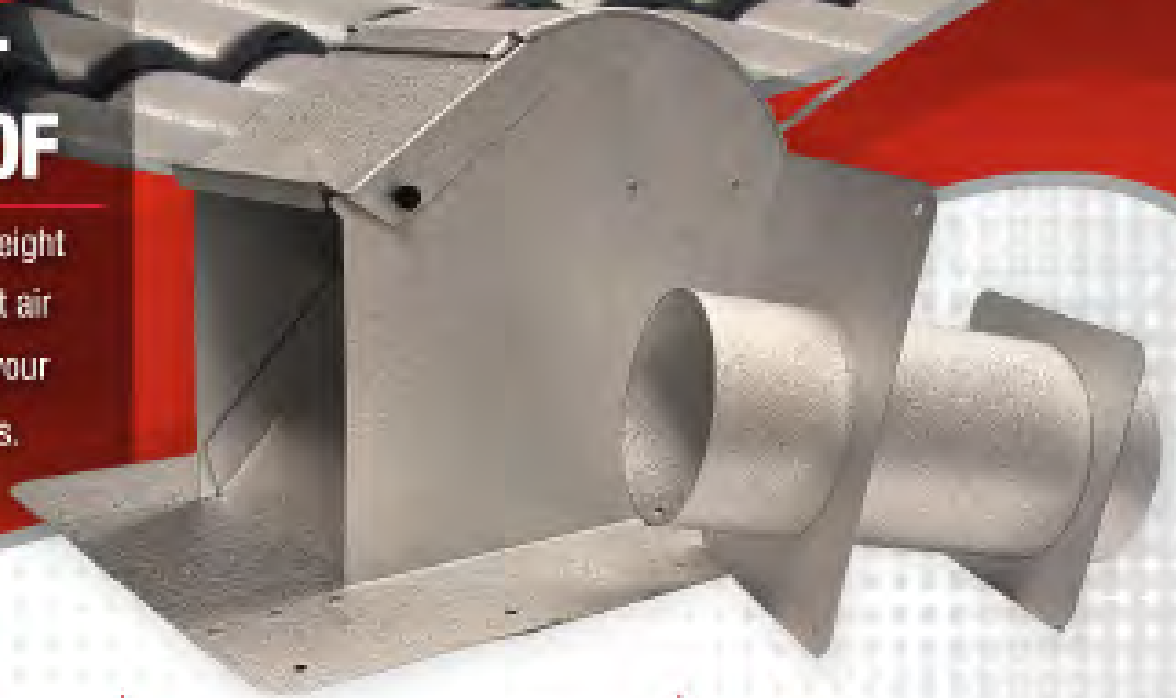


Roofing Ventilation & Accessories

# HIGH PROFILE Dryer Vent

## PROTECT YOUR ROOF

and everything underneath  
by removing hot, moist air  
and lint buildup from your  
dryer to the outdoors.



### Features:

- ▶ Removeable Cap for Easy Cleaning
- ▶ 110MPH Wind Driven Rain Tested
- ▶ Eliminate Call Backs From Leaks
- ▶ Dryer Vent Collar Included
- ▶ Easy to Install
- ▶ Keeps out insects, critters and rain

**EXPAND YOUR ROOFING SYSTEM PERFORMANCE**  
**PREVENT LEAKS • PROTECT PROPERTY • ASSURE VENTILATION**

## 1. DETERMINE THE VENT LOCATION

- Choose a location on the roof that is directly above the dryer's exhaust line. The vent should be placed between two rafters for proper support.
- Ensure the dryer vent is positioned typically in the second or third course below the ridge, ensuring it's not in an area of concentrated water runoff.
- Turn up a minimum of 1" to create a water diverter, ensuring water-shedding capabilities.

## 2. PREPARE THE ROOF OPENING:

- From the attic, use a drill bit to mark the center of the desired vent location. This will give you a reference point on the roof's exterior.
- On the roof, use the vent's collar as a template to trace a circular opening (4" round). The opening should be slightly larger than the vent pipe's diameter to allow for a snug fit.

## 3. INSTALL THE DRYER VENT:

- Place vent so that inner tube attaches to attic tube.
- Lower the galvanized steel vent into the prepared opening, ensuring the vent pipe passes through the hole.
- Orient the vent so that the flashing's highest point is "uphill" and the flange rests flat against the tile.

## 4. SECURE THE FLASHING:

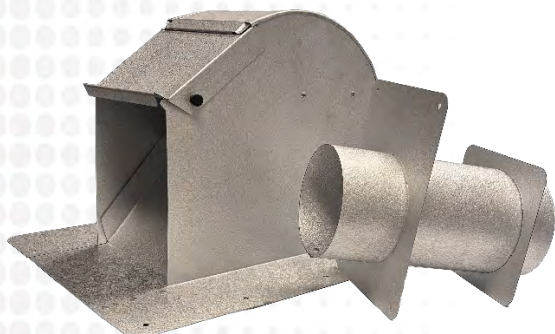
- Once the vent is properly seated, secure the flashing to the roof deck using galvanized roofing nails.
- Place a nail in each corner and then space additional nails every 6 inches along the perimeter of the flashing.
- **Crucial Step:** Apply a generous amount of roofing sealant.

## 5. TILE INTERGRATION:

- **Place the tiles:** Install the roof tiles around the vent, leaving a space for the vent's top cover. The top cover is designed to take the place of two field tiles.
- **Trim tiles if necessary:** You may need to trim the tiles to ensure a proper fit around the vent. This is often the case with tile battens or lugs.
- For metal roof applications, consult the metal panel manufacturer flashing specifications.

## 6. TOP COVER AND FINAL SECURING:

- **Install the top cover:** Slide the vent's top cover into position. The lower lip of the top cover should slide under the adjacent tiles.
- **Secure the cover:** Secure the top cover to the roof deck using approved fasteners. Some vents have fastening straps or wind clips that you'll need to secure.
- **Seal:** Use proper safety equipment, including harness and fall protection, when working on a roof.



### Specs

**Dimensions:** 11.75" long x 6.25" wide x 7.25" high (body) 18.25" long x 13" wide (flange)

**Material:** 26ga galvalume steel

**Codes & Standards:** FL Building Code, Miami-Dade

**Color:** Black, Galvalume, Weatherwood

**Nails:** Coil of 13/4" Nails

**Roof Pitch:** Conforms to any pitch from 2/12

**Patents:** Pending

**Included in Box:** One dryer vent and collar per box

**Features:** Removable hood panel for cleaning interior front baffles that divert wind driven rain



**PATENT  
PENDING**



## IMPORTANT CONSIDERATIONS:

- **Local Codes:** Check local building codes for specific requirements related to roof ventilation and materials.
- **Safety:** Use proper safety equipment, including harness and fall protection, when working on a roof.



Roofing Ventilation & Accessories

# Python Pro™ 4 ft. Ridge Vent

## SUPERIOR ATTIC VENTILATION

Our top-performing shingle over ridge vent. Provides maximum airflow in all wind conditions.

**NAILS  
INCLUDED**

### Features:

- ▶ Meets or exceeds the industry's toughest standards for ventilation performance.
- ▶ Built-in self-closing end caps, no additional parts or labor required.
- ▶ Prevents mold and mildew.
- ▶ Includes 30 - 3" roofing nails attached to each piece for installation.
- ▶ Extends shingle and roof deck life.
- ▶ Suitable for any pitch from 3/12 to 16/12.
- ▶ 18 Square Inches of Net Free Venting Area per lineal foot.
- ▶ Eliminates damaging ice dams in winter.

**EXPAND YOUR ROOFING SYSTEM PERFORMANCE**  
**PREVENT LEAKS • PROTECT PROPERTY • ASSURE VENTILATION**

# INSTALLATION INSTRUCTIONS

## VALUE DRIVES EVERYTHING WE DO

Value drives everything we do. That's why we developed a comprehensive line of ventilation products that offer easy installation, remarkable building ventilation, lower utility costs, extended roof deck life, extreme durability, and outstanding warranties. Get more quality, more performance, and more value...from Marco Industries.™

## EASY INSTALL

See our installation online at [marcoindustries.com](http://marcoindustries.com)

1. Using a chalk line, mark 1" on both sides of the ridge (1" beyond ridge pole) as a guide for cutting a slot in the decking.
2. Cut a slot in the roof ridge using a circular saw with the blade set at a depth to cut through the roof decking only—avoid cutting trusses and rafters.
3. Center the FlexFit™ 3-IN-1 Ridge Vent over the slot that has been cut in the ridge, ensuring that the Ridge Vent support pegs sit flat on the roof. To ensure proper alignment along the ridge, run a chalk line down both sides of the ridge.
4. Using roofing nails provided, install the vent starting from the outer edge moving inward. Properly secure by using the 12" nail holes.
5. As you install more pieces of the Ridge Vent, ensure that each piece is joined together using the male/female connectors.
6. Cut the final piece to a length long enough so that it is flush with the edge of the roof. Ensure that the self-closedend cap is facing out to prevent weather infiltration. Interlocking feature will not be used on the final piece.
7. Install the cap shingles using the nails provided in the "shingle nail line" area for cap shingle installation as indicated on the FlexFit™ 3-IN-1 Ridge Vent. Visit [MarcoIndustries.com](http://MarcoIndustries.com) for 10" and 9" Cap Shingle Installation.

## SPECS:

**Net Free Area:** 84 Square Inches of NFVA

**Dimensions:** Width 15-1/2" x Length 48"

**Material:** No break polypropylene

**Codes & Standards:** CSA

**Roof Pitch:** Conforms to any pitch from 2/12 to 12/12

**Color:** Black

**Nails:** Bag of 30 - 3" nails

**Patents:** US Pat No. 7,662,037, US Pat No. 9,175,480,  
US Pat No. D694,394, Canada Pat No. 2,776,653

**Pack Unit of Measurement:** 10 per carton

**Construction Details:** Closed external baffles with self closing end caps

**Installer Detail:** Shingle nail lines for easy installation

**Nail Holes:** Reinforced to prevent deformation and crushing

**Approvals:** FBC FL38704, TDI RV-125



PROUDLY MADE IN NORTH AMERICA



1-800-800-8590 / [Marcoindustries.com](http://Marcoindustries.com)

**MARCO INDUSTRIES™**  
Roofing Ventilation & Accessories

# 45 Intake Vent



## INNOVATION IN VENTILATION

The 45 Intake Vent is made of high impact virgin polypropylene with heat stabilizers and UV inhibitors throughout the vent.



### Features:

- ▶ Offers 45 Square Inches of Net Free Area per piece
- ▶ Closed External Baffle
- ▶ Molded Nail Holes for Easy Installation
- ▶ Bag of 30 - 3" Roofing Nails attached to each piece of 451V
- ▶ Molded in Nail Line Indicators for Easy Installation
- ▶ Patented Design with Internal and External Baffles

**EXPAND YOUR ROOFING SYSTEM PERFORMANCE**  
**PREVENT LEAKS • PROTECT PROPERTY • ASSURE VENTILATION**

# INSTALLATION INSTRUCTIONS

## VALUE DRIVES EVERYTHING WE DO

Value drives everything we do. That's why we developed a comprehensive line of ventilation products that offer easy installation, remarkable building ventilation, lower utility costs, extended roof deck life, extreme durability, and outstanding warranties. Get more quality, more performance, and more value...from Marco Industries.™

## INSTALLATION

See our installation online at [marcoindustries.com](http://marcoindustries.com)

All requirements specified in the International Residential Code (IRC) and the International Building Code (IBC) must be satisfied and manufacturer's installation instructions followed, unless otherwise specified by this product evaluation.

**Roof Deck:** The roof deck must be minimum nominal 7/16" thick OSB wood structural panels.

**Attachment of Vent to Roof Deck:** The vent is secured to a minimum 7/6" OSB roof deck and has a 1-1/2" by 46" hole cut out. The base of the vent (flashing) is fastened to the roof deck using minimum 11-gauge x 2-1/2" long galvanized smooth shank nails with a minimum 3/8" diameter head. Refer to manufacturer's instructions for fastener locations. The fasteners are not required to penetrate the roof framing. Fasteners must be long enough to penetrate completely through the roof deck.

**Note:** Keep the manufacturer's installation instructions available on the job site during the installation. Use corrosion resistant fasteners as specified in the IRC and the IBC.

### SPECS:

**Net Free Area:** 45 square inches  
**Width:** 11 3/4"  
**Length:** 48"  
**Vent Weight:** 1 1/8  
**Material:** No Break Polypropylene  
**Color:** Black

### LIMITATIONS:

**Roof Slope:** The roof vent may be installed on roofs with a minimum slope of 3:12 and any slope up to a maximum slope of 16:12.  
**Design Pressure:** -75 psf

### CODE & STANDARDS:

U.S. Pat. No. 11,746,531  
 Texas Department of Insurance RV-131  
 Florida Building Code PENDING  
 Miami-Dade County NOA No.24-0313.04  
 Screened & Filtered version are also available.



*Note: \*It is the contractors' responsibility to use the appropriate roofing underlayment for the region of install.*



1-800-800-8590 / [Marcoindustries.com](http://Marcoindustries.com)





Roofing Ventilation & Accessories

# Shingle Gooseneck Vent

## OUTSTANDING PERFORMANCE

The only Gooseneck  
Vent of its kind to pass  
the Standard TAS  
100 Wind-Driven  
Rain Test



### Features:

- ▶ High Quality & Durability - Reduces customer call-backs.
- ▶ Internal baffle offers a third line of defense against wind-driven rain.
- ▶ Promotes superior airflow and makes it ideal for kitchen or bathroom exhausts.
- ▶ Interior louver panel captures any moisture directing it to vent pan away from the attic.
- ▶ Suitable for any roof pitch from 3/12 to 12/12.
- ▶ Keeps insects and critters out.
- ▶ High Quality & Durability - Reduces customer call-backs.

**EXPAND YOUR ROOFING SYSTEM PERFORMANCE**  
**PREVENT LEAKS • PROTECT PROPERTY • ASSURE VENTILATION**

# INSTALLATION INSTRUCTIONS

## VALUE DRIVES EVERYTHING WE DO

Value drives everything we do. That's why we developed a comprehensive line of ventilation products that offer easy installation, remarkable building ventilation, lower utility costs, extended roof deck life, extreme durability, and outstanding warranties. Get more quality, more performance, and more value...from Marco Industries.™

## EASY INSTALL

See our installation online at [marcoindustries.com](http://marcoindustries.com)

1. When installing vents on an existing shingle roof: remove shingles immediately around sides and top of opening to provide space to install vent as per instructions below.
2. Shingle courses should be installed close to the deck opening so that the front flange of the vent completely covers exposed section of shingle.
3. Position the vent to cover the last course of shingles at the sides and bottom of the opening. Center the vent over the opening in the deck. Apply an industry approved sealant under front flange of vent.
4. Fasten side and top flanges securely with minimum 1.25" standard roofing nails spaced 4" on center and 1.5" from outer edge of flange.
5. Apply roof cement on side and top flanges. Completely cover flanges 2" beyond flange onto underlayment with 1/4" thick bed of plastic roof cement or equal.
6. Install shingles, cut to fit so flanges are completely covered. Press into place to ensure a complete bond of cement to the shingles. Fasten shingles with nails as per shingle manufacturer's instructions.

*Tip: Pre-cut shingles to fit prior to applying roof cement.  
Then remove cut pieces, apply roof cement, and install shingles per above.*

### SPECS:

**Dimensions:** Width 19-3/16" x Height 7 1/2"

**Material:** 26 - gauge galvalume

**Codes & Standards:** FL Building Code

**Roof Pitch:** Conforms to any pitch from 3/12 to 12/12

**Color:** Black, Weather Wood, Galvalume

**Patents:** Pending

**Sizes:** 4", 6" and 10"

**Vent Hood:** Mini louvers in lower portion of hood block water.

**Interior Louver Panel:** Acts as second water barrier.

**Internal Baffle:** Placed at the top of the vent pan, the internal baffle is the third line of defense against water intrusion.



**X Not to be Used as a Laundry Vent.**



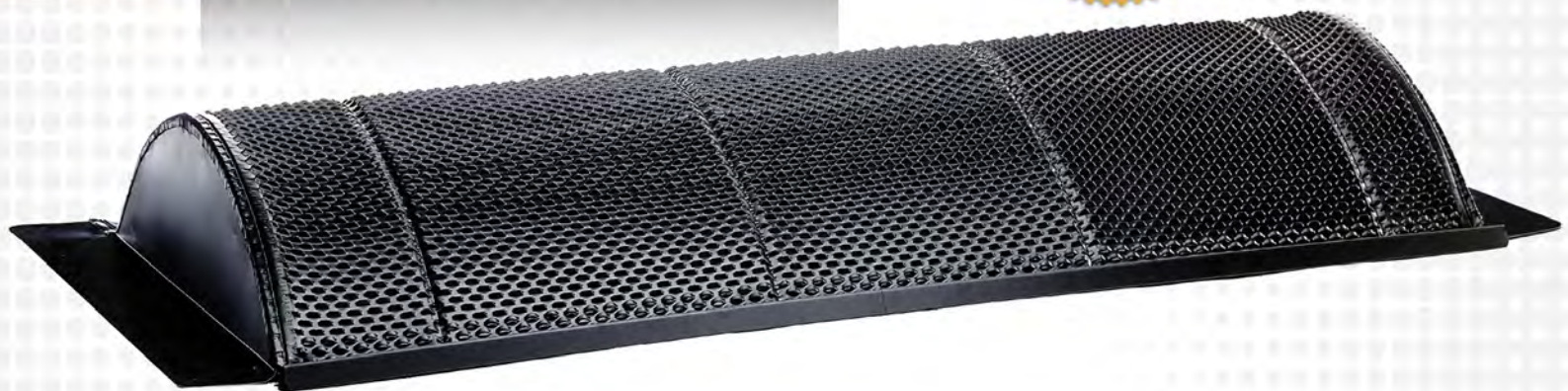
1.800.800.8590 / [Marcoindustries.com](http://Marcoindustries.com)



# Shingle Off-Ridge Vent

## BUILT TO LAST

Eliminating water infiltration while providing 100 square inch Net Free Venting Area per 4' unit.



## Features:

- ▶ Zero water entry at 110 MPH wind-driven rain.
- ▶ No additional external baffle is needed in the front of vent, saving time and money.
- ▶ Reduces air conditioning maintenance and utility costs.
- ▶ High Quality & Durability - Reduces customer call-backs.
- ▶ Suitable for any roof pitch from 3/12 to 12/12.
- ▶ Keeps insects and critters out.

**EXPAND YOUR ROOFING SYSTEM PERFORMANCE**  
**PREVENT LEAKS • PROTECT PROPERTY • ASSURE VENTILATION**

# INSTALLATION INSTRUCTIONS

## VALUE DRIVES EVERYTHING WE DO

Value drives everything we do. That's why we developed a comprehensive line of ventilation products that offer easy installation, remarkable building ventilation, lower utility costs, extended roof deck life, extreme durability, and outstanding warranties. Get more quality, more performance, and more value...from Marco Industries.™

## EASY INSTALL

See our installation online at [marcoindustries.com](http://marcoindustries.com)

1. Space vent openings evenly across ridge. The opening size should be a minimum of a 2½" by 46" cut between two sets of rafters. Note: Do not cut into rafters.
2. If shingle have previously been installed on the roof, remove the shingles around sides and top of opening to provide space to install vent as per instructions.
3. Shingle courses should be installed close to deck opening so that the front flange of the vent completely covers unexposed section of shingle.
4. Position the vent to cover the last course of shingles, leaving the proper exposed section of shingle at the side flanges of vent. Center vent over the opening of the deck. Apply approved sealant under front flange of vent.
5. Fasten side and top flanges securely with minimum 1¼" standard roofing nails. Space nails approximately 4" on the center and approximately 1½" from outer edge of flange.
6. Secure the bottom flange with provided wood screws. Space screws evenly no more than 18" apart. A 4 ft. vent will require a minimum of 2 screws.
7. Apply roof cement on side and top flanges. Completely cover flanges 2" beyond flange onto underlayment with ¼" thick bed of plastic roof cement.
8. Cut shingles to fit so flanges are completely covered. Press shingles into place to ensure they are bonded to the cement. Fasten shingles with nails per shingle manufacturer's instructions.



### SPECS:

**Dimensions:** Width 23 1/2" - x Height 3 1/4"

**Material:** 26 - gauge galvalume

**Codes & Standards:** FL Building Code

**Roof Pitch:** Conforms to any pitch from 3/12" to 12/12"

**Color:** Black, Weatherwood, Galvalume

**Patents:** Pending

**Nominal Lengths:** 4'

**Screws:** 1 3/4" Wood Type for Bottom Flange (not included)

**Vent Hood:** Mini louvers in lower portion of hood block water.

**Interior Louver Panel:** Mini louvers in opposite direction to louvers on lower portion of hood as second water barrier

**Internal Baffle:** Placed at the top of the vent pan, the internal



1.800.800.8590 / [Marcoindustries.com](http://Marcoindustries.com)



# YOU CAN'T STOP THE STORMS... BUT YOU CAN STOP THE LEAKS

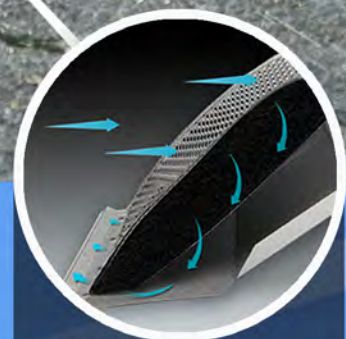
Keep your attic cool and dry with Marco's never-seen-before Weather-Tite technology!



The upward-facing baffles on the front of the vent prevent wind-driven rain from entering.



If water does enter the vent, our proprietary Weather-Tite non-woven material acts as a barrier between the upward-facing baffles and interior baffles.



If the wind is extra strong and water somehow gets past the non-woven barrier, the water will be caught in the interior drip pan and will run out the front – keeping your attic dry!



1-800-800-8590 / [Marcoindustries.com](http://Marcoindustries.com)





# 50 Metal Slant Back Vent™

## ALLOW YOUR ATTIC TO BREATHE

With a Net Free Area of 50 square inches, this low profile, galvanized static vent will provide optimal attic ventilation.



### Features:

- ▶ Designed with three side louvers to provide superior airflow to your attic while keeping water, insects, and critters out.
- ▶ Available in multiple colors
- ▶ Keeps your attic cool and dry – prevents ice damming, mold, and roof deterioration
- ▶ Meets or exceeds industry standards

### Specs:

- ▶ Dimensions: 16" width x 20" length x 5" height
- ▶ Material: Made from galvanized steel
- ▶ Net Free Area: 50 square inches
- ▶ Roof Pitch: Suitable for any pitch from 3/12 to 12/12

**EXPAND YOUR ROOFING SYSTEM PERFORMANCE**  
**PREVENT LEAKS • PROTECT PROPERTY • ASSURE VENTILATION**

# 50 Square Vent

## EXCEPTIONAL PERFORMANCE

The only static vent on the market with a turned down baffle.

This creates wind turbulence and keeps wind-driven rain, insects, vermin and debris out of the attic.



## Features:

- ▶ A square vent made with no-break polypropylene material that provides 50 square inches of NFA (Net Free Area) per vent.
- ▶ The turned down baffle is made possible with living hinge technology, meaning the baffle is molded and then folded into place during vent assembly.
- ▶ Can be installed over standard size holes on re-roofs and its low profile design makes it more discreet and enhances curb appeal.

**EXPAND YOUR ROOFING SYSTEM PERFORMANCE**  
**PREVENT LEAKS • PROTECT PROPERTY • ASSURE VENTILATION**

# INSTALLATION INSTRUCTIONS

## VALUE DRIVES EVERYTHING WE DO

Value drives everything we do. That's why we developed our Steep Slope Ventilation Division. This comprehensive line of products offer easy installation, remarkable building ventilation, lower utility costs, extended shingle and roof deck life, extreme durability, and outstanding warranties. Get more quality, more performance, and more value... from Marco Industries™

## EASY INSTALL

See our installation online at [marcoindustries.com](http://marcoindustries.com)

1. Locate the roof vents toward the rear or side of the house spaced evenly over the width of the roof.
2. Mark the location of all roof vents before cutting holes. Cut the hole in the roof deck to closely match the hole in the vent. Center the holes between the rafters down two feet (24") from the peak of the roof. When installed as an intake vent, position vent at two feet (24") from the eave or edge of the roof. Ensure that attic insulation does not block intake vent.
3. Install shingles until the bottom of the hole is covered. Cut the excess shingles away. Apply an approved sealant around the edge of the hole.
4. The top of the vent has an arrow at the top of the flashing to install facing the ridge. Ensure that the vents are installed to the up-arrow position.
5. Secure the vent base with a minimum of 6 galvanized nails. Nails should be a minimum of 1 1/4" long and should penetrate the vent, shingle, and decking. Secure a nail in each corner of the vent flashing and along the middle of each side of the vent.
6. For proper sealing, use a plastic-friendly roofing sealant. All nails should receive a dab of sealant.
7. Install shingles around the vent ensuring that the shingles butt up against the throat of the vent.
8. Pre-cut the top shingle to fit around the top side of the vent throat and nail in place. Install shingles as normal.

### SPECS:

**Net Free Area:** 50 square inch per vent

**Material:** No break polypropylene

**Codes & Standards:** CSA

**Roof Pitch:** Conforms to any pitch from 3/12 to 12/12

**Color:** Black, Brown, Weather Wood

**Patents:** Pending

**Height:** 4.45 inches

**Flashing Size:** 17.75" x 17.75"

**Hood Dimensions:** 13" x 13"



1.800.800.8590 / [Marcoindustries.com](http://Marcoindustries.com)



# Weather-Tite™ 60 Square Vent

## EXCEPTIONAL PERFORMANCE

The only static vent on the market with a turned down baffle.

This creates wind turbulence and keeps wind-driven rain, insects, vermin and debris out of the attic.



### Features:

- ▶ A square vent made with no-break polypropylene material that provides 60 square inches of NFA (Net Free Area) per vent.
- ▶ The turned down baffle is made possible with living hinge technology, meaning the baffle is molded and then folded into place during vent assembly.
- ▶ Can be installed over standard size holes on re-roofs and it's low profile design makes it more discreet and enhances curb appeal.

**EXPAND YOUR ROOFING SYSTEM PERFORMANCE**  
**PREVENT LEAKS • PROTECT PROPERTY • ASSURE VENTILATION**

# INSTALLATION INSTRUCTIONS

## VALUE DRIVES EVERYTHING WE DO

Value drives everything we do. That's why we developed our Steep Slope Ventilation Division. This comprehensive line of products offer easy installation, remarkable building ventilation, lower utility costs, extended shingle and roof deck life, extreme durability, and outstanding warranties. Get more quality, more performance, and more value... from Marco Industries™

## EASY INSTALL

See our installation online at [marcoindustries.com](http://marcoindustries.com)

1. Locate the roof vents toward the rear or side of the house spaced evenly over the width of the roof.
2. Mark the location of all roof vents before cutting holes. Cut the hole in the roof deck to closely match the hole in the vent. Center the holes between the rafters down two feet (24") from the peak of the roof. When installed as an intake vent, position vent at two feet (24") from the eave or edge of the roof. Ensure that attic insulation does not block intake vent.
3. Install shingles until the bottom of the hole is covered. Cut the excess shingles away. Apply an approved sealant around the edge of the hole.
4. The top of the vent has an arrow at the top of the flashing to install facing the ridge. Ensure that the vents are installed to the up-arrow position.
5. Secure the vent base with a minimum of 6 galvanized nails. Nails should be a minimum of 1 1/4" long and should penetrate the vent, shingle, and decking. Secure a nail in each corner of the vent flashing and along the middle of each side of the vent.
6. For proper sealing, use a plastic-friendly roofing sealant. All nails should receive a dab of sealant.
7. Install shingles around the vent ensuring that the shingles butt up against the throat of the vent.
8. Pre-cut the top shingle to fit around the top side of the vent throat and nail in place. Install shingles as normal.

### SPECS:

**Net Free Area:** 60 square inch per vent  
**Material:** No break polypropylene  
**Codes & Standards:** CSA, CCMC  
**Roof Pitch:** Conforms to any pitch from 3/12 to 12/12  
**Color:** Black, Brown, Weather Wood  
**Patents:** Pending  
**Height:** 4.45 inches  
**Flashing Size:** 17.75" x 17.75"  
**Hood Dimensions:** 13" x 13"



PATENT  
PENDING



1.800.800.8590 / [Marcoindustries.com](http://Marcoindustries.com)



# 150 Round Vent

## A HIGHLY EFFICIENT AIR VENT

That offers 150 square inches of net free venting area, for use on larger roofs. The 150 will not rust, dent or break.



## Features:

- ▶ Suitable for any pitch from 2/12 to 16/12.
- ▶ Higher NFA means fewer roof penetrations.
- ▶ Requires a square cut out which is easier to cut on a roof.
- ▶ No sharp edges - safer to handle.
- ▶ Comes in three colors: Black, Brown, and Weatherwood.
- ▶ Made of high impact Polypropylene with heat stabilizers and UV inhibitors throughout.
- ▶ 26" x 26" size - easy to install.
- ▶ Virtually indestructible. No flange bending or denting of dome.
- ▶ Green Product.

**EXPAND YOUR ROOFING SYSTEM PERFORMANCE**  
**PREVENT LEAKS • PROTECT PROPERTY • ASSURE VENTILATION**

# INSTALLATION INSTRUCTIONS

## VALUE DRIVES EVERYTHING WE DO

Value drives everything we do. That's why we developed a comprehensive line of ventilation products that offer easy installation, remarkable building ventilation, lower utility costs, extended roof deck life, extreme durability, and outstanding warranties. Get more quality, more performance, and more value...from Marco Industries.™

## EASY INSTALL

See our installation online at [marcoindustries.com](http://marcoindustries.com)

1. Locate the roof vents on the rear or side of the house evenly spaced on the width of the roof.
2. Mark the location of all roof vents before cutting holes. Center the holes between the rafters down at least two feet (24") from the peak of the roof.
3. Holes should be cut 17½" High x 15½" Wide. 150 Round Vent box has a template for error proof installation. Using the template mark the outline for the hole on the roof. The hole in the roof cannot be larger than the hole in the bottom of the vent.
4. Shingle up until shingles cover the bottom of the hole. Cute the excess shingles away. Because shingles are part of a porous system applying an approved sealant around the edge of the hole is required.
5. The top of the 150 Round Vent has a molded in peak. Ensure that the vents are installed with the peak at the UP position.
6. Secure the vent base with a minimum of 8 galvanized nails. Nails should be a minimum of 1¼" long and must penetrate the vent, shingle, and decking. Secure a nail in the each corner of the vent flashing and along the middle of each side of the vent.
7. To seal the vent, use a plastic friendly roofing sealant. All nails must also receive a dab of sealant.
8. Shingle up and around the vent ensuring that the shingles butt up against the throat of the vent.
9. Pre-cut the top shingle to fit around the cricket of the vent and nail in place. Shingle up as normal to complete installation.

### SPECS:

**Dimensions:** Width 26" x Length 26"x Height 6.97"

**Patents:** US Pat No. 7,544,124, US Pat No. 7,780,510, US Pat No. 10,415,252

**Contruction Details:** With heat stabilizers and UV inhibitors throughout

**Durability:** Will not dent or rust, UL 2218: Class 4 Impact Resistance

**Codes & Standards:** TDI, FL Building Code, CSA

**Roof Pitch:** Conforms to any pitch from 2/12 to 16/12

**Color:** Black, Brown, Weather Wood

**Material:** No-break polypropyolene

**Vent Weight:** 4.34 lbs per piec

**Pack Unit of Measurement:** 1 per carton



1.800.800.8590 / [Marcoindustries.com](http://Marcoindustries.com)





Roofing Ventilation & Accessories

# 65 SLANT BACK VENT

**STAYS SOLID. BUILT TO LAST.**

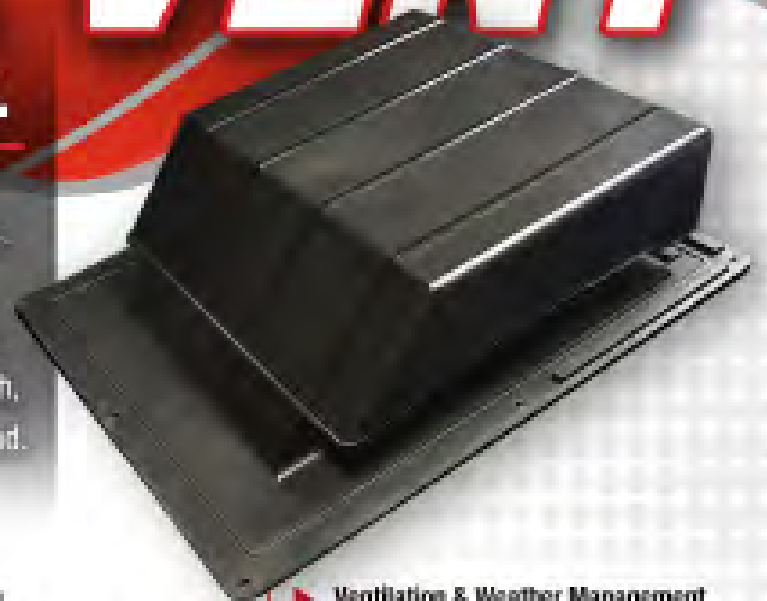
A compact, square-top static roof vent that's built for the long-term protection of asphalt shingle roof systems.

Engineered for durability, installer confidence, and dependable ventilation performance, the 65 slant back incorporates structural ribs that enhance rigidity and strength, reinforcing structural integrity and providing peace of mind.

## Features:

- ▶ **Structural Ribbed Hood Design**  
Engineered ribs enhance rigidity and reinforce durability.
- ▶ **Built for Strength & Reliability**  
Rigid construction holds shape during installation and maintains durability over time.
- ▶ **Installer-Friendly Design**  
Delivered fully assembled and ready to install. Fastens securely to the roof deck beneath shingles using standard roofing practices.
- ▶ **Compact Footprint & Clean Roofline Appearance**  
Square-top profile supports efficient placement and a clean finished look after installation.
- ▶ **Ventilation & Weather Management**  
Supports balanced attic airflow to help reduce heat and moisture buildup. Watershedding geometry helps manage wind-driven rain while maintaining reliable performance. Provides 65 sq. in. net free area (NFA).

**EXPAND YOUR ROOFING SYSTEM PERFORMANCE**  
**PREVENT LEAKS • PROTECT PROPERTY • ASSURE VENTILATION**



# INSTALLATION INSTRUCTIONS

## VALUE DRIVES EVERYTHING WE DO

Value drives everything we do. That's why we developed a comprehensive line of ventilation products that offer easy installation, remarkable building ventilation, lower utility costs, extended roof deck life, extreme durability, and outstanding warranties. Get more quality, more performance, and more value...from Marco Industries.™

## EASY INSTALL

See our installation online at [marcoindustries.com](http://marcoindustries.com)

1. Identify the roof vent locations toward the rear or sides of the home. Space vents evenly across the width of the roof.
2. Before cutting any openings, mark all vent locations. Holes should be centered between rafters and positioned 24 inches down from the roof peak. When installing the vent as an intake, place it 24 inches up from the eave or roof edge. Make sure attic insulation does not obstruct the intake opening.
3. Cut an opening measuring 11 inches high by 10 inches wide. Do not cut the roof opening larger than the vent's bottom opening.
4. Install shingles up to the point where they cover the lower edge of the opening, then trim away excess material. Since shingles are part of a porous roofing system, apply an approved sealant around the perimeter of the opening.
5. The top of the Slant Back Vent is angled. Be sure the vent is installed with the slanted peak facing upward.
6. Attach the vent base using at least eight galvanized nails. Nails must be a minimum of 1¼ inches long and penetrate the vent, shingles, and roof decking. Place one nail in each corner of the flashing and one centered along each side.
7. For watertight seal, use a roofing sealant that is safe for plastic materials. Apply a small amount of sealant over each nail head.
8. Shingle up and around the vent ensuring that the shingles butt up against the throat of the vent.
9. Continue shingling up and around the vent, ensuring the shingles fit snugly against the vent throat.
9. Cut the top shingle to match the slope of the vent, secure it in place, and continue shingling normally to finish the installation.

### SPECS:

**Dimensions:** 16.5" x 19.5"

**Construction Details:** High Wind Deflector prevents wind driven rain from entering vent.

**Durability:** Holds shape and maintains performance due to structural reinforcement. Corrosion-resistant and built for long-term exposure.

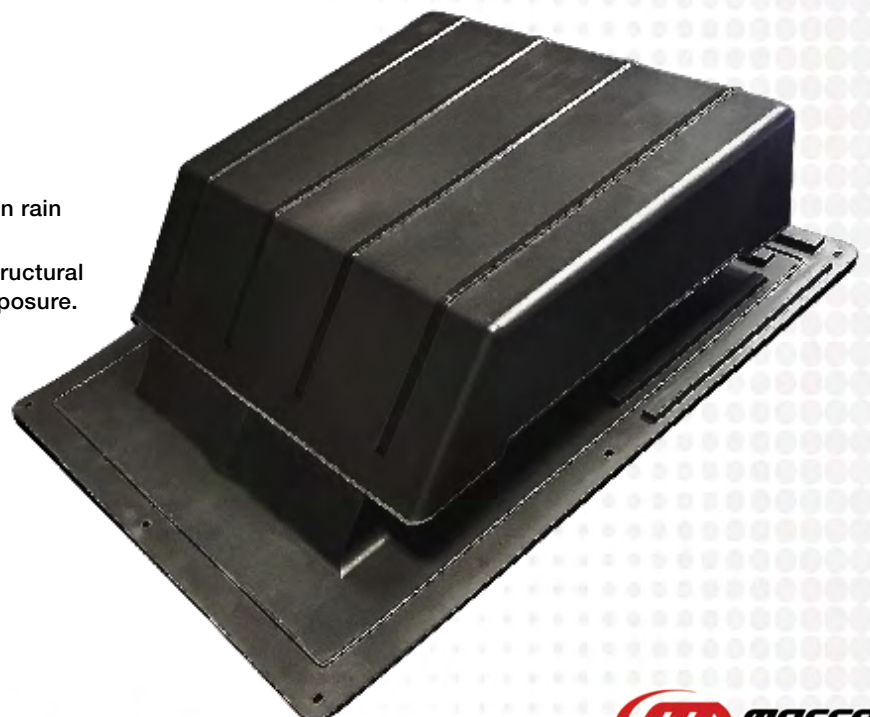
**Codes & Standards:** TDI (pending)

**Roof Pitch:** Conforms to any pitch from 3/12 to 12/12

**Color:** Black, Brown, Weatherwood

**Material:** UV-stabilized, high-impact engineered resin

**Net Free Venting Area:** 65 sq. in. per vent



**TDI** (pending)



1.800.800.8590 / [Marcoindustries.com](http://Marcoindustries.com)

**MARCO INDUSTRIES**  
Roofing Ventilation & Accessories



Roofing Ventilation & Accessories

# LOW PROFILE **Dryer Vent**

## PROTECT YOUR ROOF

and everything underneath  
by removing hot, moist air  
and lint buildup from your  
dryer to the outdoors.



### Features:

- ▶ Removeable Cap for Easy Cleaning
- ▶ 110MPH Wind Driven Rain Tested
- ▶ Eliminate Call Backs From Leaks
- ▶ Dryer Vent Collar Included
- ▶ Easy to Install
- ▶ Keeps out insects, critters and rain

**EXPAND YOUR ROOFING SYSTEM PERFORMANCE**  
**PREVENT LEAKS • PROTECT PROPERTY • ASSURE VENTILATION**

# INSTALLATION INSTRUCTIONS

## LOCATION OF DRYER VENT

1. It is recommended to position dryer vent on roof deck directly above location of the dryer or as close as possible for most efficient exhaust of lint.
2. Once location is determined cut hole in roof deck (5"x5" hole or 5" round).
3. Insert the collar into hole and fasten to roof deck with at least 4 nails.
4. Apply roof cement on the side and top flanges of the collar. Completely cover flanges and approximately 2" beyond flanges onto underlayment with 1/4" thick bed of plastic roof cement.
5. Attach dryer duct to collar on attic side of roof deck.

## POSITION AND SECURE

1. Place vent so that inner collar attaches to the dryer ducting in the attic.
2. Install shingles so that the bottom flange on vent covers over the unexposed portion of the shingle.
3. Apply an industry approved sealant under the front flange of the vent.
4. Using the holes provided on the flanges, fasten side and top flanges securely with minimum 1.25" standard roofing nails.

## SHINGLE INSTALLATION

1. Apply roof cement on the side and top flanges. Completely cover flanges and approximately 2" beyond flanges onto the underlayment with 1/4" thick bed of plastic roof cement.
2. Install shingles, cut to fit so flanges are completely covered. Press into place to ensure a complete bond of cement to shingles. Fasten shingles with nails as per shingle manufacturer's instructions. However, do not place any nails within 3" of the body of the vent.



### Specs

**Dimensions:** 11.75" long x 6.25" wide x 7.25" high (body) 18.25" long x 13" wide (flange)

**Material:** 26ga galvalume steel

**Codes & Standards:** FL Building Code, Miami-Dade

**Color:** Black, Galvalume, Weatherwood

**Nails:** Coil of 13/4" Nails

**Roof Pitch:** Conforms to any pitch from 2/12

**Patents:** Pending

**Included in Box:** One dryer vent and collar per box

**Features:** Removable hood panel for cleaning interior front baffles that divert wind driven rain



**PATENT  
PENDING**



## NOTES

- Installers may want to pre-cut shingles to fit prior to applying roof cement. Once the shingles have been pre-cut remove cut pieces, apply roof cement, and install shingles as described above.
- It is highly recommended that the dryer duct be attached to the collar and the vent attached to the cover for the most efficient exhaust lint. However, some re-roof situations may not accommodate the use of the collar, using the collar is optional where duct is exiting through the roof deck.

# Universal Tile Ridge Vent

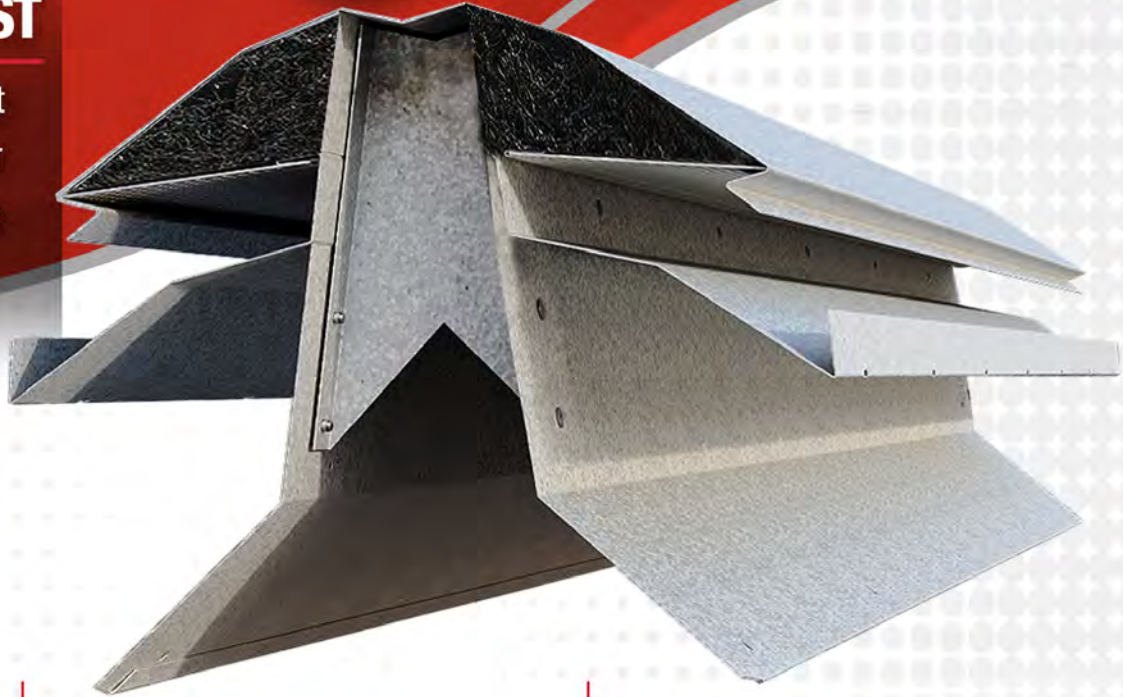
## AN INDUSTRY FIRST

With the Universal Ridge Vent homeowners can enjoy better attic ventilation and a simple installation process for you.



### Features:

- ▶ Provides 20 square inches of Net Free Venting Area.
- ▶ Fits any pitch from 3/12 to 12/12.
- ▶ Keeps out leaks and wind-driven rain.
- ▶ Delivers optimal ventilation with installation at the ridge of roof.
- ▶ Offers pleasing aesthetics as it is concealed under the ridge cap.
- ▶ Made with rugged 26-gauge galvalume steel.
- ▶ TAS-100(a)-approved to meet the most stringent hurricane testing requirements.
- ▶ Keeps out insects, critters and rain.
- ▶ Reduces customer call-backs with quality build and durable design.



**EXPAND YOUR ROOFING SYSTEM PERFORMANCE**  
**PREVENT LEAKS • PROTECT PROPERTY • ASSURE VENTILATION**

# INSTALLATION INSTRUCTIONS

## VALUE DRIVES EVERYTHING WE DO

Value drives everything we do. That's why we developed a comprehensive line of ventilation products that offer easy installation, remarkable building ventilation, lower utility costs, extended roof deck life, extreme durability, and outstanding warranties. Get more quality, more performance, and more value...from Marco Industries.™

### SPECS:

**Net Free Area:** Over 20 sq. in. per Lineal ft, 80 sq. in per unit

**Material:** 26 - Gauge Galvalume and non-woven composite polyester

**Nominal Lengths:** 4'

**Heights:** 5" available

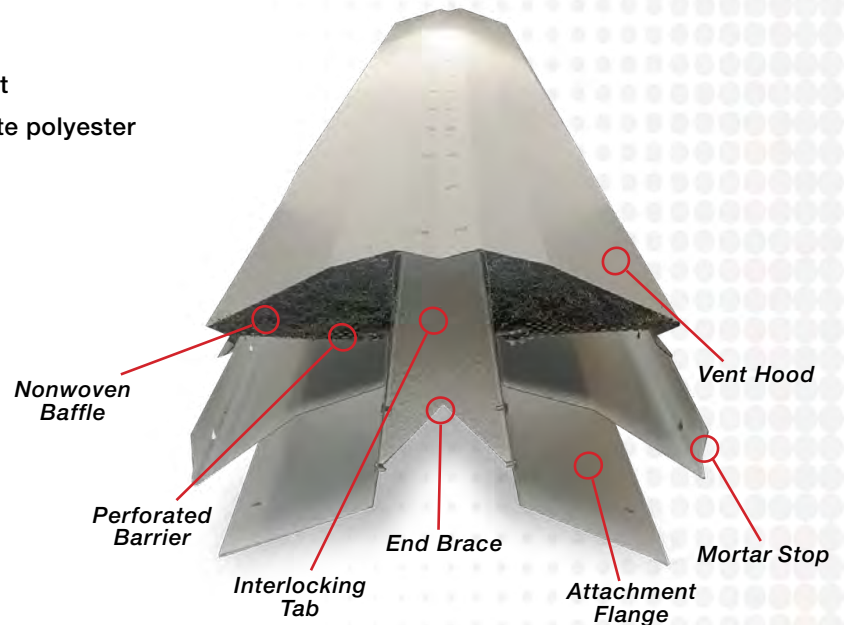
**Codes & Standards:** FL Building Code

**Roof Pitch:** Conforms to any pitch from 2/12 to 16/12

**Color:** Mill

**Roof Pitch:** Conforms to any pitch from 3/12

**Patents:** Pending



## EASY INSTALL

See our installation online at [marcoindustries.com](http://marcoindustries.com)

1. Install tile roof components; roofing underlayment, battens (if used), and field tiles up to the row just below the ridge where the Universal Tile Ridge Vent will be installed. All components should be installed per the Tile Roof Institute installation manual observing specific regional climate requirements.
2. Using a chalk line, mark 1" on both sides of the ridge for truss construction (1" beyond ridge pole) as a guide for cutting a slot in the decking. The slot should be no closer than 12" to the end of the ridge.
3. Cut a 2" slot in the roof ridge on the bottom of the decking using a circular saw - avoid cutting trusses and rafters.
4. To ensure proper alignment along the ridge, run a chalk line down both sides of the ridge.
5. Center the Universal Tile Ridge Vent over the ridge slot. Use sealant recommended by the underlayment manufacturer between the vent flange and the roof deck. Place the first vent with the male end facing inwards. The vent flanges have a built in 6:12 pitch; for shallower roof pitches, simply press the vent downwards to flatten the flanges against the roof deck. For steeper pitches, press the vent body against the deck and bend the flanges against the deck while nailing in place.
6. Fasten the vent to the roof deck on approximately 12" centers using a nail gun, or hand nail using the existing pre-punched holes.
7. Apply a generous bead of Marco Weathertite™ Sealant along the circumference of the male end flange, including the deck flanges. Lower the female end of the next vent into place over the male end of the first vent, ensuring the sealant fills any gaps. Hold the vent down while nailing it into place. Repeat for all subsequent vents. Vents are self-centering to each other when sleeved together.
8. Cut the ridge anchor accessory to a length long enough so that it is flush with the edge of the roof. Place the ridge anchor adjacent to the Universal Tile Ridge Vent and seal with mastic and/or sealant. Fill end of ridge anchor with mortar to seal.
9. Install the cap tiles with mortar, adhesive, or fasteners.



1.800.800.8590 / [Marcoindustries.com](http://Marcoindustries.com)





# Tile Gooseneck Vent

## OUTSTANDING PERFORMANCE

The only Gooseneck  
Vent of its kind to pass  
the Standard TAS  
100 Wind-Driven  
Rain Test



### Features:

- ▶ Quiet - no noisy damper opening and closing.
- ▶ Marco's Tile Gooseneck Vent is suitable for tile, synthetic, cedar, shake, and slate roofs.
- ▶ Promotes superior airflow and makes it ideal for kitchen or bathroom exhausts.
- ▶ Interior louver panel captures any moisture directing it to vent pan away from the attic.
- ▶ Suitable for any roof pitch from 3/12 to 12/12.
- ▶ Keeps insects and critters out.
- ▶ High Quality & Durability - Reduces customer call-backs.

**EXPAND YOUR ROOFING SYSTEM PERFORMANCE**  
**PREVENT LEAKS • PROTECT PROPERTY • ASSURE VENTILATION**

# INSTALLATION INSTRUCTIONS

## VALUE DRIVES EVERYTHING WE DO

Value drives everything we do. That's why we developed a comprehensive line of ventilation products that offer easy installation, remarkable building ventilation, lower utility costs, extended roof deck life, extreme durability, and outstanding warranties. Get more quality, more performance, and more value...from Marco Industries.™

## EASY INSTALL

See our installation online at [marcoindustries.com](http://marcoindustries.com)

- 1 Select required vent size; 4" Vent, 6" Vent, or 10" Vent
2. When installing vents on an existing tile roof: remove tiles immediately around sides and top of opening to provide space to install vent as per instructions below.
3. Position vent over opening in deck.
4. Fasten side and top flanges securely with minimum 1 1/4" standard roofing nails spaced 4" on center and 1 1/2" from outer edge of flange.
5. Seal flanges to sub-roof membrane as per substrate manufacturer recommendations.
6. Cut tile to fit around vent and install per tile manufacturer recommendations.



*High Profile  
Tile Gooseneck Vent*



*Low Profile  
Tile Gooseneck Vent*

### SPECS:

**Dimensions:** Width 19-3/16" x Height 10 1/4"

**Material:** 26 - gauge galvalume

**Codes & Standards:** FL Building Code, patents pending

**Roof Pitch:** Conforms to any pitch from 3/12" to 12/12"

**Color:** Galvalume and other colors available

**Sizes:** 4", 6" and 10"

**Vent Hood:** Mini louvers in lower portion of hood block water.

**Interior Louver Panel:** Acts as second water barrier.

**Internal Baffle:** Placed at the top of the vent pan, the internal baffle is the third line of defense against water intrusion.



**X Not to be Used as a Laundry Vent.**



1.800.800.8590 / [Marcoindustries.com](http://Marcoindustries.com)



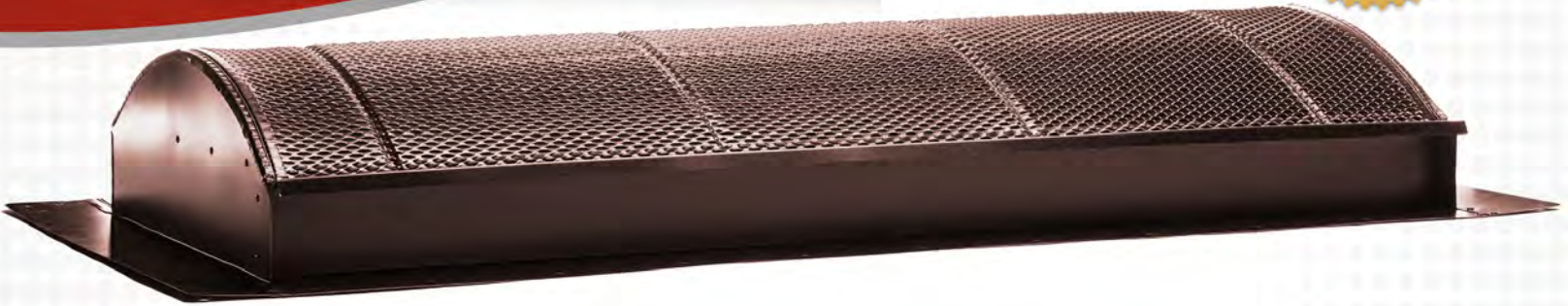


Roofing Ventilation & Accessories

# Tile Off-Ridge Vent

## A INNOVATIVE OFF-RIDGE VENT

Designed with a higher lift to make it suitable for tile, synthetic, cedar, shake, and slate roofs.



### Features:

- ▶ Zero water entry at 110 MPH wind-driven rain.
- ▶ No additional external baffle is needed in the front of vent, saving time and money.
- ▶ 25 square inches of Net Free Venting Area per lineal foot and 100 square inches per 4 ft. unit.
- ▶ Reduces air conditioning maintenance and utility costs.
- ▶ No additional external baffle is needed in the front of the vent saving time and money.
- ▶ Reduces air conditioning maintenance costs and prevents wood rot which extends shingle and roof deck life.
- ▶ Suitable for any roof pitch from 3/12 to 12/12.
- ▶ Keeps insects and critters out.
- ▶ High Quality & Durability - Reduces customer call-backs.
- ▶ Made from durable 26-gauge galvaume steel.

**EXPAND YOUR ROOFING SYSTEM PERFORMANCE**  
**PREVENT LEAKS • PROTECT PROPERTY • ASSURE VENTILATION**

# INSTALLATION INSTRUCTIONS

## VALUE DRIVES EVERYTHING WE DO

Value drives everything we do. That's why we developed a comprehensive line of ventilation products that offer easy installation, remarkable building ventilation, lower utility costs, extended roof deck life, extreme durability, and outstanding warranties. Get more quality, more performance, and more value...from Marco Industries.™

## EASY INSTALL

See our installation online at [marcoindustries.com](http://marcoindustries.com)

1. Space vent openings evenly across ridge. The opening size should be a minimum of a 2½" by 46" cut between two sets of rafters. Note: Do not cut into rafters.
2. If tiles have previously been installed on the roof, remove the tiles around sides and top of opening to provide space to install vent as per instructions.
4. Position vent over opening in deck.
5. Fasten side and top flanges securely with minimum 1¼" standard roofing nails. Space nails approximately 4" on the center and approximately 1½" from outer edge of flange.
5. Seal flanges to sub roof membrane as per substrate manufacturer recommendations.
6. Cut tile to fit around vent and install per tile manufacturer recommendations.



### SPECS:

**Dimensions:** Width 23 1/2" - x Height 6"

**Material:** 26 - gauge galvalume

**Codes & Standards:** FL Building Code

**Roof Pitch:** Conforms to any pitch from 3/12" to 12/12"

**Color:** Black, Weatherwood, Mill

**Patents:** Pending

**Nominal Lengths:** 4'

**Net Free Area:** 25 sq. in. per Lineal ft

**Screws:** 1 3/4" Wood Type for Bottom Flange (Not included)

**Vent Hood:** Mini louvers in lower portion of hood block water.

**Interior Louver Panel:** Mini louvers in opposite direction to louvers on lower portion of hood as second water barrier

**Internal Baffle:** Placed at the top of the vent pan, the internal baffle is the third line of defense against water intrusion.



1.800.800.8590 / [Marcoindustries.com](http://Marcoindustries.com)





# STANDING SEAM VENT

## SUPERIOR VENTILATION

The SSV is the only vent tested and proven to deliver 18 square inches of Net Free Area per linear foot. The added exclusive non-woven material won't break down over time and is reliable, and built to last. The pre-applied butyl tape makes installation quick and easy — so you can install the next SSV without missing a beat.

### Features:

- ▶ Pre-cut lengths for a variety of different metal panels.
- ▶ Fast, easy installation.
- ▶ Exclusive Nonwoven, fabric won't deteriorate over time.
- ▶ Includes a strip of Marco's proprietary Weather-Tite™ non-woven material for superior protection against the elements.
- ▶ Pre-applied butyl tape and fastener holes.
- ▶ Built with long lasting quality and durability.
- ▶ Superior Net Free Area at 18 square inches per linear foot.
- ▶ Keeps moisture, insects and critters out.

**EXPAND YOUR ROOFING SYSTEM PERFORMANCE**  
**PREVENT LEAKS • PROTECT PROPERTY • ASSURE VENTILATION**

# INSTALLATION INSTRUCTIONS

## VALUE DRIVES EVERYTHING WE DO

Value drives everything we do. That's why we developed a comprehensive line of ventilation products that offer easy installation, remarkable building ventilation, lower utility costs, extended roof deck life, extreme durability, and outstanding warranties. Get more quality, more performance, and more value...from Marco Industries.™

## EASY INSTALL

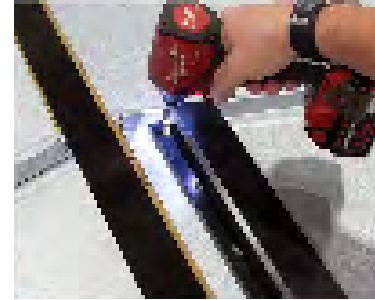
See our installation online at [marcoindustries.com](http://marcoindustries.com)



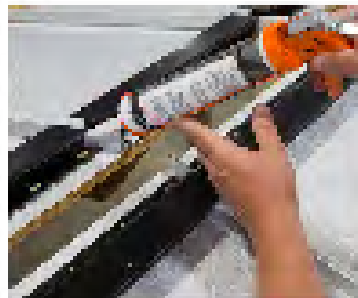
**STEP 1:** Snap a chalk line about one-eighth to one-sixteenth of an inch above the position where the ridge cap will be installed.



**STEP 2:** Peel away the backing from the butyl tape. Allow the over-stuffed foam to expand so it completely fills the gap between the top of the rib and the SSV. Align the SSV along the chalk line.



**STEP 3:** Secure the SSV using type 410 fasteners, ensuring at least one-half inch of penetration into the decking. Space the fasteners no more than three inches apart.



**STEP 4:** Apply sealant at the points where the SSV meets the panel ribs.



**STEP 5:** Install the open hem ridge cap by locking both bottom sides over the top and side of the SSV. Secure and finish installing the ridge cap by following the steel manufacturer's installation instructions and detail.



### SPECS:

**Height:** 1", 1.5", 1.75", 2"

**Length:** Custom cut

**Testing:** Passed TAS-100(A)



1.800.800.8590 / [Marcoindustries.com](http://Marcoindustries.com)





# Closure Foam

## DESIGNED TO STAY PUT

Marco's M63 industrial adhesive eliminates blow away problems with an adhesive bead applied to either the flat or the ribbed side of Closure-Foam.



**CLOSURE**  
**FOAM**

### Features:

- ▶ Full bead (once installed) of adhesive applied.
- ▶ Thickness variety.
- ▶ Adheres in subfreezing temperatures and on wet surfaces.
- ▶ Profiles for every application.
- ▶ No excess scrap for easier cleanup.
- ▶ Eliminate gaps and ensure a snug end-to-end fit.
- ▶ Better UV resistance/longer lasting than competition
- ▶ 40-year limited warranty
- ▶ Economically priced without sacrificing quality.

**EXPAND YOUR ROOFING SYSTEM PERFORMANCE**  
**PREVENT LEAKS • PROTECT PROPERTY • ASSURE VENTILATION**

# INSTALLATION INSTRUCTIONS

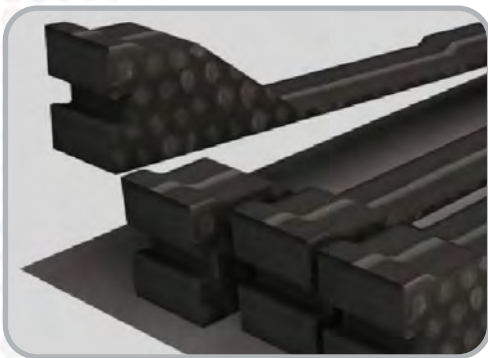
## VALUE DRIVES EVERYTHING WE DO

Value drives everything we do. That's why we developed a comprehensive line of ventilation products that offer easy installation, remarkable building ventilation, lower utility costs, extended roof deck life, extreme durability, and outstanding warranties. Get more quality, more performance, and more value...from Marco Industries.™

## EASY INSTALL

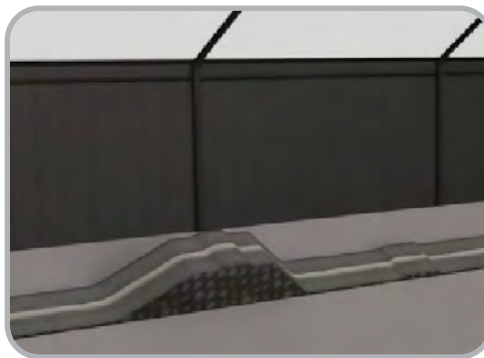
See our installation online at [marcoindustries.com](http://marcoindustries.com)

Closure-Foam can be installed by a single person in just three easy steps shown below.



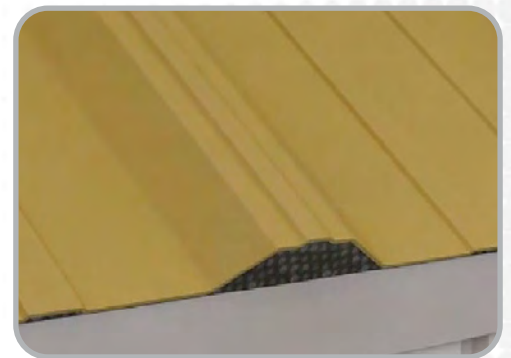
### Step 1:

Ensure the self-adhesive closure configuration fits the roof panel used.



### Step 2:

The inside Closure fits the underside of the panel.



### Step 3:

Place the roof panel over pre-cut closure configuration for a snug fit. Attach panel over closure with fasteners.

## SPECS:

Nominal Density-Skin/Skin (BS ISO 7214 1998): 24 kg/m<sup>3</sup>

Cell Size, Typical Diameter: 0.3mm

Shore Hardness 00 Scale, 10 mm cell/cell thickness (ISO 868 1985): 50 00

Recommended Operating Temp. Range: +100° C/-70° C (+212° F/-97° F)

Thermal Conductivity – Mean Temp of 10° C/ 50° F (ISO 8302 1991): 0.0392 W/m.K

Flammability – Automotive (FMVSS.302-Burn Rate): Pass 12 mm & thicker <100mm/min

Flammability – Horizontal Burn Rate (ISO 7214 1998): 5 mm thick, 2.1 mm/sec & 13 mm thick, 1.5 mm/sec

Compression Stress-Strain (BS ISO 7214 1998)

10% Compression: 34 kPa

25% Compression: 53 kPa

40% Compression: 85 kPa

50% Compression: 118 kPa

Durometer (50): Shore 00

Water: 5% lbs/ft<sup>3</sup>

Compression Set: 25% comp, 22hr, 23° C/73° F

1/2 hr recovery (25 mm cell-cell): 27% set

24 hr recovery (25 mm cell-cell): 19% set

Tensile Strength (ISO 7214 1998): 320 kPa

Tensile Elongation: 130%

Tear Strength (BS EN ISO 8067 1995): 495 N/m



**CLOSURE-FOAM™**



1.800.800.8590 / [Marcoindustries.com](http://Marcoindustries.com)



# AngleKut™ Beveled Closure System

## A SUPERIOR BEVELED CLOSURE

That effectively seals metal roof panels, preventing water from entering the roof's hips and valleys



### Features:

- ▶ Can be made at any angle, it will fit any metal roof profile.
- ▶ Made from crosslink polyethylene foam the same as M-Cell closures.
- ▶ Closures doesn't bleed, dry out, or dissolve with weather and UV exposure.
- ▶ 1-1/2" thick foam increases the strength of the beveled closure.
- ▶ Closures are an easy replacement for caulking and polyuethane strips.
- ▶ Anglekut Easy Order Form.

**EXPAND YOUR ROOFING SYSTEM PERFORMANCE**  
**PREVENT LEAKS • PROTECT PROPERTY • ASSURE VENTILATION**

**VALUE DRIVES EVERYTHING WE DO**

Value drives everything we do. That's why we developed a comprehensive line of ventilation products that offer easy installation, remarkable building ventilation, lower utility costs, extended roof deck life, extreme durability, and outstanding warranties. Get more quality, more performance, and more value...from Marco Industries™

**ANGLEKUT™ Easy Order Form**

It's fast and easy to order Angle-Kut. Just call 1-800-800-8590 and we'll walk you through each step in minutes!

Date \_\_\_\_\_ Customer P.O.# \_\_\_\_\_ Job # \_\_\_\_\_

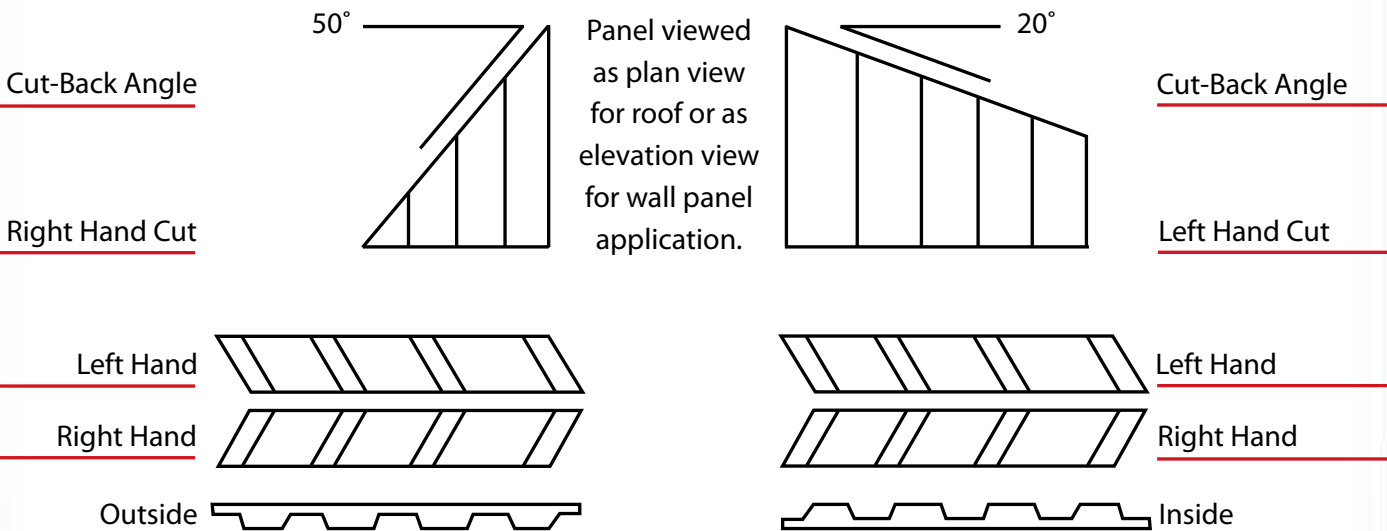
**Complete the following information for each separate closure configuration and beveled angle:**

- 1. Panel Name: \_\_\_\_\_
- 2. Application: End Wall \_\_\_\_\_ Hip \_\_\_\_\_ Valley \_\_\_\_\_
- 3. Cut-back Angle: \_\_\_\_\_
- 4. Roof Slope (Rise/Run) \_\_\_\_\_ / \_\_\_\_\_
- 5. A. Number of Panels - Inside: Left Hand \_\_\_\_\_ Right Hand \_\_\_\_\_  
 Outside: Left Hand \_\_\_\_\_ Right Hand \_\_\_\_\_

**OR**

- 6. A. Number of Panels - Inside: Left Hand \_\_\_\_\_ Right Hand \_\_\_\_\_  
 Outside: Left Hand \_\_\_\_\_ Right Hand \_\_\_\_\_

**Key to Order Entry Information:**



# Valley Cap™

## DESIGNED TO PREVENT LEAKS

Where primary and secondary roofs intersect with valleys.



### Features:

- ▶ Eliminates bulge and maintains straight ridge line.
- ▶ Adaptable base designed to fit most roof pitches and valley conditions.
- ▶ One piece construction allows for easy on-site installation.

Advanced Ozone Resistance tested to...	EPDM 70 hour @ 500 pphm
High Temperature Resistance tested to...	Intermittent: +135°C (+275°F) • Continuous: +100°C (+212°F)
Low Temperature Resistance tested to...	-55°C (-67°F)
Compression Set Maximum...	25%

Available in Two Sizes		
Opening	12-1/4" (311mm)	16-1/2" (419mm)
Inner Depth	3" (76mm)	
Overall Height	1-1/4" (31mm)	
Base	11-3/4" x 20-1/8" x 11-3/4" (298x511x298mm)	



## AG INSTALLATION

1. Prepare the W Valley trim. Make mirror images of each W Valley panel, notching 1" from the outside across the center valley peak, leaving a 1" offset.
2. Take about 9"-10" of the reverse hook, which catches water if it splashes back up under the other side. The points of the center valley peak are critical in terms of alignment. When these are overlapped, the two points will be lined up in the center of the ridge of secondary ridge line.
3. Lay the Valley Cap right over the top securing it with roof sealant and fasteners. Once in place, water will be channeled away from valley and will not get beneath the roof substrate.



## STANDING SEAM INSTALLATION

Typically, the difference between a AG Panel Roof and a Standing Seem Snap-Lock Panel Roof are the clips that must be installed on the W Valley.

1. When using a Valley Cap, you must use a separate clip. (That's because you will not be able to place the cleat over the top of the Valley Cap, but you can run this clip over the top of the Valley Cap).
2. When the panel comes in, it hooks over the metal clips and forms a complete water shed, from panel, to Valley Cap into the W Valley.



## SECONDARY RIDGE LINES

When a roof has a secondary ridge line that is parallel to the primary ridge line, it may be difficult to install a Ridge Cap since it will be impeded by the secondary roof. A common construction method is to divide the Ridge Cap, fan it out, and press it under the roof panels, which can result in a big bubble beneath the panels that is above the Ridge Cap. The best way to remedy this issue is to install a Valley Cap.

### Secondary Ridge Line Installation

1. Place the Valley Cap atop and between both valleys of the roof.
2. Notch the Ridge Cap to accommodate the Valley Cap.
3. Ensure that the Primary Ridge Line is perfectly straight.
4. Place the Secondary Ridge Cap over the Valley Cap.



## DETERMINING WHICH VALLEY CAP SIZE TO USE

There are two sizes of valley caps, a 12 1/4" and 16 1/2" throat. To determine which size you need, start at the ridge line of the the secondary ridge, measure out 4", then measure from the center of the valley straight across, 4" out. If that measurement is 12 1/4" or less, you will use the 12 1/4" throat. If that measurement is more than 12 1/4", you will use the larger Valley Cap which has a 16 1/2" throat.



### SPECS:

Advance Ozone Resistance tested to: EPDM 70 hours @ 500 pphm

High Temperature Resistance tested to: Intermittent: +135C (+275F)  
Continuous: +100C (+212F)

Low Temperature Resistance tested to: -55C (-67F)

Compression Set Maximum: 25%

Available in Two Sizes		
Opening	12-1/4" (311mm)	16-1/2" (419mm)
Inner Depth	3" (76mm)	
Overall Height	1-1/4" (31mm)	
Base	11-3/4" x 20-1/8" x 11-3/4" (298x511x298mm)	



1-800-800-8590 / Marcoindustries.com





Roofing Ventilation & Accessories

# Bathroom Pipe Flashing

## PROTECT YOUR HOME TODAY

The Bathroom Roof Top  
Pipe Flashing that  
works as a barrier and  
a path for water to  
flow down and off  
your roof effectively.



### Features:

- ▶ Slides over pipe - for pitch to 45 degrees.
- ▶ Non-fading and non-cracking, rigid black thermoplastic base.
- ▶ Non-fading, sealing collar
- ▶ Rated 180°F continuous heat.
- ▶ Do not use petroleum-based products on plastic bases or rubber collars.
- ▶ Approved for Type B installations.

### Installation:

Installed over a 3 inch to 4 inch plumbing vent stack to seal the roof opening. Press fit application, no sealant needed. The flashing will be secured to the roof and shingled around as part of the roofing application. Features a rigid plastic base.

**EXPAND YOUR ROOFING SYSTEM PERFORMANCE**  
**PREVENT LEAKS • PROTECT PROPERTY • ASSURE VENTILATION**

# Metal Roof Multi-Flash Sealing Vent Adapter

## Weather Protection Made of EPDM

These ashings are compounded specifically for maximum resistance to weathering due to ozone and ultraviolet light.

## Ribbed Canals

The ribbed canals allow for maximum flexibility, without affecting performance.

## Standard or Retrofit Application

Turn the standard application into a retrofit by cutting down the center and adding the stainless steel gripper.

## Sleeve Flexibility

Sleeve flexibility absorbs vibration and movement caused by expansion/contraction.

## Stainless Steel Gripper & Aluminum

Termination strips for retro applications included.

## Adaptable Base

The base is designed to mold to most panel configurations and roof pitches regardless of pipe location.

## Applications:

- Turbine Vents • Roof Exhaust Fans
- Metal Roof Vents • Roof Caps
- Goose Neck Air Vent

## Available in Three EPDM Colors:

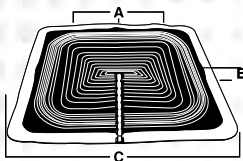
- Black • Gray • Dark Gray

## For Roof Vents With A:

Pre-installed metal base for the metal roofing industry.

Roof Vent Sealing Adapter Multi-Flash Flashing Details

A-Top Opening	Closed
B-Overall Height	1/4" (6mm)
C-Base	24" (609mm)



Name	Part Number	Compound	Closed Top	Height	Base
Metal Roof Vent Sealing Adapter	RVA101BA-MF	Black EPDM	Square or Rectangle	1/4" (6mm)	24" (609mm)
Multi-Flash	RVA101GA-MF	Black EPDM	Closed - 12" (0-355mm)		
	RVA101NG-MF	Dark Gray EPDM			

Advanced Ozone Resistance tested to...	EPDM 70 hour @ 500 pphm
High Temperature Resistance • Intermittent	+135°C (+275°F)
Tested to • Continuous	+100°C (+212°F)
Low Temperature Resistance tested to...	-55°C (-67°F)
Compression Set Maximum...	25%

\*Complete specification data and testing methods are available upon request.



Roofing Ventilation & Accessories

# RoofBoots™

## GET A SUPERIOR SEAL, IN A FLASH

Get the roof flashing you need quickly, and rest easy knowing you're getting industry-leading warranties and Weather-Tite performance.



**ROOFBOOTS™**



### Features:

- ▶ Easy, on-site customization for superior fit
- ▶ Sleeve flexibility absorbs vibration and pipe movement caused by expansion/contraction.
- ▶ Maximum resistance to ozone weathering
- ▶ Available in black or grey EPDM, red or grey silicone, or colors upon request
- ▶ The first ICC-listed flashing in the metal building industry with a 35-year warranty (available on black EPDM only)
- ▶ Square or circular flexible sleeve

**EXPAND YOUR ROOFING SYSTEM PERFORMANCE**  
**PREVENT LEAKS • PROTECT PROPERTY • ASSURE VENTILATION**

## VALUE DRIVES EVERYTHING WE DO

Value drives everything we do. That's why we developed a comprehensive line of ventilation products that offer easy installation, remarkable building ventilation, lower utility costs, extended roof deck life, extreme durability, and outstanding warranties. Get more quality, more performance, and more value...from Marco Industries.™

### UNIVERSAL ROOFBOOT FLEXIBLE SLEEVE



- Easy, on-site customization for superior fit
- Sleeve flexibility absorbs vibration and pipe movement caused by expansion/contraction
- Maximum resistance to ozone weathering
- Available in black or grey EPDM, red or grey silicone, or colors upon request
- The proven choice with a 20-year warranty

#### Specs

**Ozone Resistance:** 70 hrs @ 500pphm (EPDM and RS)

**High Temp. Resistance:**

**Intermittent:** +135°C/+275°F (EPDM), +260°C/+500°F (RS)

**Continuous:** +100°C/+212°F (EPDM), +225°C/+437°F (RS)

**Low Temp. Resistance:** -55°C/-67°F (EPDM), -74°C/-101°F (RS)

**Compression Set:** 25% (EPDM), 50% (RS)

\*RS = Red Silicone

	PIPE RANGE	BASE
MINI	0" - 3/4"	4" (101 mm)
#1	1/4" - 2 1/2"	3 1/4" (82 mm)
#2	1 3/4" - 3"	6 1/4" (158 mm)
#3	1/4" - 5"	7 3/4" (234 mm)
#4	3" - 6 1/4"	9 1/4" (234 mm)
#5	4 1/4" - 7 3/4"	10 1/2" (266 mm)
#6	5" - 9"	13" (330 mm)
#7	6" - 11"	14" 1/2" (368 mm)
#8	7" - 13"	16" 1/2" (412 mm)
#9	9" - 19"	25" 1/4" (641 mm)

### RoofBoots Colors

Our Universal and Standard RoofBoots are available in black or grey EPDM, red or grey silicone, or these custom colors upon request. \*Call for availability.



### STANDARD ROOFBOOT SQUARE FLEXIBLE SLEEVE



- Easy, on-site customization for superior fit
- Sleeve flexibility absorbs vibration and pipe movement caused by expansion/contraction
- Maximum resistance to ozone weathering
- The first icc-listed flashing in the metal building industry with a 35 - Year Warranty (Available on black EPDM only)
- Available in black or grey EPDM, red or grey silicone, or colors upon request
- Standard 20-year warranty. 35-year warranty available

#### Specs

**Ozone Resistance:** 70 hrs @ 500pphm (EPDM and RS)

**High Temp. Resistance:**

**Intermittent:** +135°C/+275°F (EPDM), +260°C/+500°F (RS)

**Continuous:** +100°C/+212°F (EPDM), +225°C/+437°F (RS)

**Low Temp. Resistance:** -55°C/-67°F (EPDM), -74°C/-101°F (RS)

**Compression Set:** 25% (EPDM), 50% (RS)

\*RS = Red Silicone

	PIPE RANGE	BASE
MINI	1/8" - 3/4"	2 1/4" (57 mm)
#1	1/4" - 2 3/4"	4 1/2" (114mm)
#2	7/8" - 4"	6" (152 mm)
#3	1/4" - 5 3/4"	8" (203 mm)
#4	2 3/4" - 7"	10" (254 mm)
#5	4" - 8 1/4"	11" (279 mm)
#6	4 3/4" - 10"	12" (279 mm)
#7	5 1/2" - 11 1/2"	14" (355 mm)
#8	6 3/4" - 13 1/2"	17" (431 mm)
#9	9 1/2" - 20 1/2"	25" (635 mm)
MAXI	12" - 28 1/2"	34" (863 mm)

# Master-Flex

## SELF-ADHESIVE FLASHING TAPE

Master-Flex Master Flash® was created to seal roof seams and areas that are tough to waterproof, such as around chimneys, dormer windows, and adjoining walls.



STICKY ROLL FLAT

STICKY ROLL WAVE

### Features:

- ▶ 4 different sizes (Width x Length):  
200mm x 5metres · 300mm x 5metres.  
450mm x 5metres · 600mm x 5metres.
- ▶ Completely self-supporting and stable.
- ▶ Soft, lightweight and easy to layout.
- ▶ Available in 5 colours: black, graphite, light grey, terracotta red and chocolate brown.
- ▶ Can be applied to various surfaces, i.e. metal, plastic or ceramic.
- ▶ Extends shingle and roof deck life.
- ▶ Environmentally friendly - can replace lead in any kind of roof covering applications.
- ▶ Obtainable in two types: Flat for Standard applications and Wave for increased shaping capabilities where more stretch is needed.

**EXPAND YOUR ROOFING SYSTEM PERFORMANCE**  
**PREVENT LEAKS • PROTECT PROPERTY • ASSURE VENTILATION**

# INSTALLATION INSTRUCTIONS

## VALUE DRIVES EVERYTHING WE DO

Value drives everything we do. That's why we developed our Steep Slope Ventilation Division. This comprehensive line of products offer easy installation, remarkable building ventilation, lower utility costs, extended shingle and roof deck life, extreme durability, and outstanding warranties. Get more quality, more performance, and more value... from Marco Industries™

## MASTER-FLEX MASTER FLASH®

- Specifically for: Abutments, Step Flashings, Chimneys and more!
- Easy to form in valleys and peaks by hand or steel roller.
- Made of EPDM rubber reinforced with stretchable aluminum mesh core for better profiling and shaping on roof tiles or metal roofs with peaks and valleys.
- Environmentally friendly can replace lead in any kind of roof covering applications

## STORAGE AND APPLICATION

- Obtainable in two types Flat for standard applications and Wave with increased shaping capabilities for applications where more stretch is needed
- To ensure proper adhesion surfaces must be clean of dust and grime.
- Sticky Roll should be applied at temperatures above 5 °C.
- After applying flashing to the surface press firmly with roller or rubber mallet.
- Do not store Sticky Roll in open sunlight as it can negatively affect butyl adhesive properties. The product should be stored in its original packaging until use.

## SPECS

PARAMETER	UNIT	VALUE	PARAMETER	UNIT	VALUE
Visible Flaws	-	No	Hail Resistance Soft Base • Hard Base	m/s	≥33 ≥22
Length	M	5 or 10 (0% to +5%)	Tearing Resistance Longitudinal • Traverse	N	≥80 ≥140
Width	M	from 0,15 to 0,60 (from 0,5% to +1%)	Peel-Off Resistance Longitudinal • Traverse	N/50mm	≥1,2 ≥1,1
Straightness	mm	≤50/10	Shear Resistance Longitudinal Overlap Traverse Overlap	N/50mm	≥60 ≥45
Thickness w/o Butyl Layer	mm	1,5 (± 5%)	Dimensional Stability Longitudinal • Traverse	%	0,0
Grammage w/o Butyl Layer	kg/mm <sup>2</sup>	1,690 (± 5%)	Low Temperature Bending	°C	≤40
Fire Resistance	Class	E	UV Resistance	1000h	Requirement met
Watertightness	10k Pa Method B	Watertight	Artificial Aging in High Temperature	8h 100 °C	Requirement met
Tensile Strength Longitudinal • Traverse	N/50mm N/50mm	≥200 ≥350			
Elongation Longitudinal • Traverse	% %	≥50 ≥29			
Static Load	kg	≥20			
Impact Durability	mm	≥500			



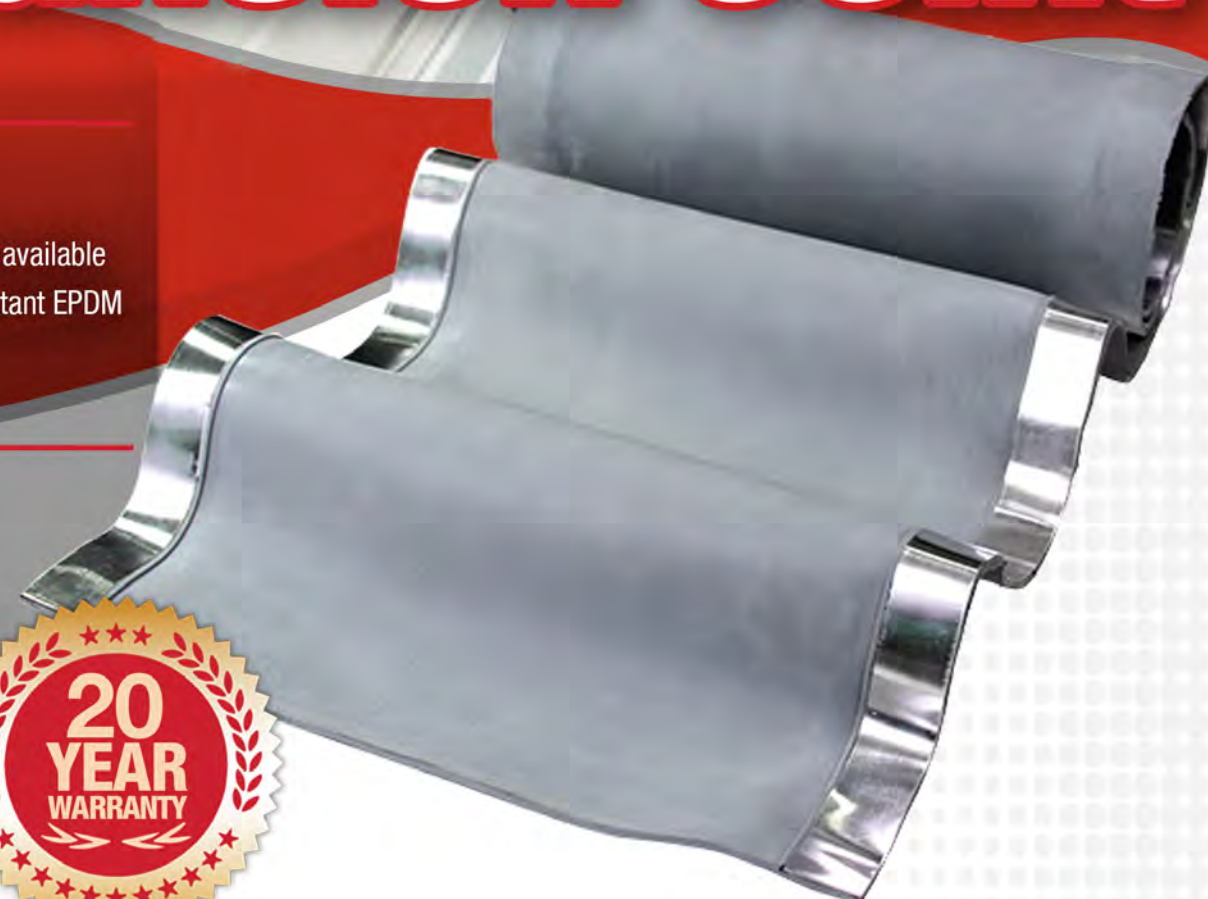
# Box Gutter Expansion Joint

## Product Details

- 9" (228mm) width
- 059 mm thick
- 12', 33', and 50' lengths available
- Made of grey ozone resistant EPDM
- 20-year warranty

## Applications

- Transition Walls
- Parapet Walls
- Stepped Roofs
- Corrugated Metal Roofs
- Roof Penetrations
- Expansion Joint
- Skylights



## Box Gutter Expansion Joint

Compound	Part No.	Flashing Details
Grey EPDM	MFBGE912	9" wide 12' long (9" x 12')
Grey EPDM	MFBGE933	9" wide 33' long (9" x 33')
Grey EPDM	MFBGE950	9" wide 50' long (9" x 50')



# Universal Foam



## A VERSATILE SOLUTION

- ▶ Designed to fit a wide range of panel configurations and sizes.
- ▶ 25 feet per roll, providing ample material for multiple uses.
- ▶ Adhesive included on one side of foam for easy application.
- ▶ Flexible polyurethane foam, semi-close cell.

PART NUMBER	DESCRIPTION	ROLL PER BAG	BAGS PER PALLET
12-112-25P	1 1/2" x 1 1/2" x 25' W/PSA	20 per bag	10 bags per pallet
10-100-25P	1" x 1" x 25' W/PSA	20 per bag	14 bags per pallet
11-200-25P	1 1/2" x 2" x 25' W/PSA	20 per bag	6 bags per pallet



1-800-800-8590 / [Marcoindustries.com](http://Marcoindustries.com)



# X-SEAL™ Expandable Foam Tape

## CREATE A BREATHABLE EXPANDABLE SEAL

A hermetic seal that allows the absorption of moisture and when conditions permit, the slow release of moisture through evaporation.



### Features:

- ▶ Follows, flexes, expands, compresses to fit.
- ▶ Expands from 1/4" to 1".
- ▶ Highly resistant to bugs and vermin.
- ▶ Universally adaptable to most roof panels, including hips and valleys.
- ▶ Expands from 3/8" to 1 1/2".
- ▶ Maintains seal in heat and cold.
- ▶ Holds the exterior out and the interior in, yet allows vapors to move through.
- ▶ Will not leech out or stain.
- ▶ A economical alternative to conventional sealants.

**EXPAND YOUR ROOFING SYSTEM PERFORMANCE**  
**PREVENT LEAKS • PROTECT PROPERTY • ASSURE VENTILATION**

# INSTALLATION INSTRUCTIONS

## VALUE DRIVES EVERYTHING WE DO

Value drives everything we do. That's why we developed a comprehensive line of ventilation products that offer easy installation, remarkable building ventilation, lower utility costs, extended roof deck life, extreme durability, and outstanding warranties. Get more quality, more performance, and more value...from Marco Industries.™



Before Expansion



Expansion



X-Seal Roll

**X-Seal's versatility makes it perfect for sealing gaps in so many construction projects, between similar and dissimilar materials:**

- Joints and seams in metal construction
- Around doors and windows
- For control joints, expansion joints and isolation joints in concrete construction
- Civil and underground construction (highway and airport runways)
- Log and prefabricated homes

## Specs

**Color:** Base foam is black, other colors available

**Density:** 10 lbs./cu Ft. (150kg/m3)

**Flammability:** UL 94 HF1, Self-extinguishing, DIN 4102, B1 compression at 50%, B2 compressed Temperature Stability

**Range:** -40° F to 212° F Manufacturer's Lab: -40°C to 120° C

**Weather Resistancy:** Excellent

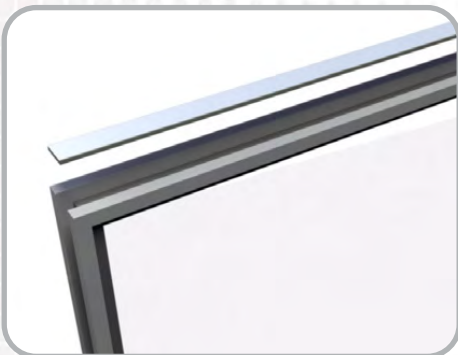
**Compression Set:** Maximum 2%

**Tensile Strength:** 21.8 psi

**Thermal Conductivity:** 12,106 BTU (hr.) (ft2) (\*F/ft)

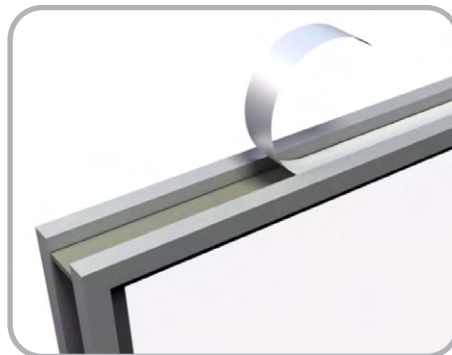
## EASY INSTALL

See our installation online at [marcoindustries.com](http://marcoindustries.com)



### Step 1:

Cut the desired length of X-Seal.



### Step 2:

Place X-Seal into the gap opening—even one with irregular hips and valleys—and remove the protective release paper.



### Step 3:

X-Seal slowly expand up to 1" to completely fill and seal the gap.



Roofing Ventilation & Accessories

# RE2™ Polyethylene Foam Spacer System

## SOLVING A COMMON RE-ROOFING PROBLEM

RE2 acts as a spacer between the old shingles and the new metal roof, providing air flow and ventilation.



**NAILS INCLUDED**

### Features:

- ▶ Cost comparable to wood, increases profitability.
- ▶ Eliminate tear-off.
- ▶ Will not decay, corrode or crease metal.
- ▶ RE2 is Sold in two 150-foot, easy-to-handle rolls.
- ▶ No more warped wood furring.
- ▶ Roll it across the old shingled roof, tack it down and install the metal roof on top.
- ▶ Easy to handle and install. Increased installation efficiency.
- ▶ Does not require heavy tools.
- ▶ One box of RE2 is equivalent to 40 furring strips.

**EXPAND YOUR ROOFING SYSTEM PERFORMANCE**  
**PREVENT LEAKS • PROTECT PROPERTY • ASSURE VENTILATION**

# INSTALLATION INSTRUCTIONS

## VALUE DRIVES EVERYTHING WE DO

Value drives everything we do. That's why we developed a comprehensive line of ventilation products that offer easy installation, remarkable building ventilation, lower utility costs, extended roof deck life, extreme durability, and outstanding warranties. Get more quality, more performance, and more value...from Marco Industries™

## EASY INSTALL

See our installation online at [marcoindustries.com](http://marcoindustries.com)



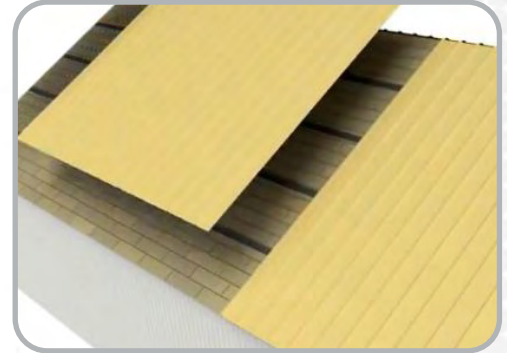
### Step 1:

Unroll across existing shingle roof.



### Step 2:

Tack with staple gun or nails.



### Step 3:

Install the metal roof on top.

**Compressive Strength - Vertical direction** (psi) (astm d3575-00) 3.8

**Surface resistivity (anti-static grade)** (EIA std. 541, Section 4.3)  $1.0 \times 10^9 - 1.0 \times 10^{12}$  thermal

**Compression Set (%)** (ASTM d3575-00) >30

**Tensile strength (psi)** (ASTM d3575-00, suffix t (md / cmd), 58, 30

**Elongation** (ASTM d3575-00, suffix t (md / cmd), 86, 60

**Tear resistance (lb/in)** (ASTM d3575-00, suffix g (md / cmd), 11, 17

**Density range (lb/ft<sup>2</sup>)** (ASTM d3575-00) 1.5-1.9

**Water absorption (lb/ft<sup>2</sup>)** (ASTM d3575-00, suffix l) >0.1

**Thermal stability** (ASTM d3575-00, suffix s) >5%

**Contact corrosivity (alum. Plate)** (Method 3005 fed std. 101) None

**Static decay (anti-static grade)** (EIA std. 541, Appendix f) >2 sec.

**conductivity k-value (btu-in / hr-ft<sup>2</sup>-°f)** (ASTM c518-91) 0.35-0.42

**Thermal resistance r-value (hr-ft<sup>2</sup>-°f / btu)** (ASTM c518-91) 1.30-1.60



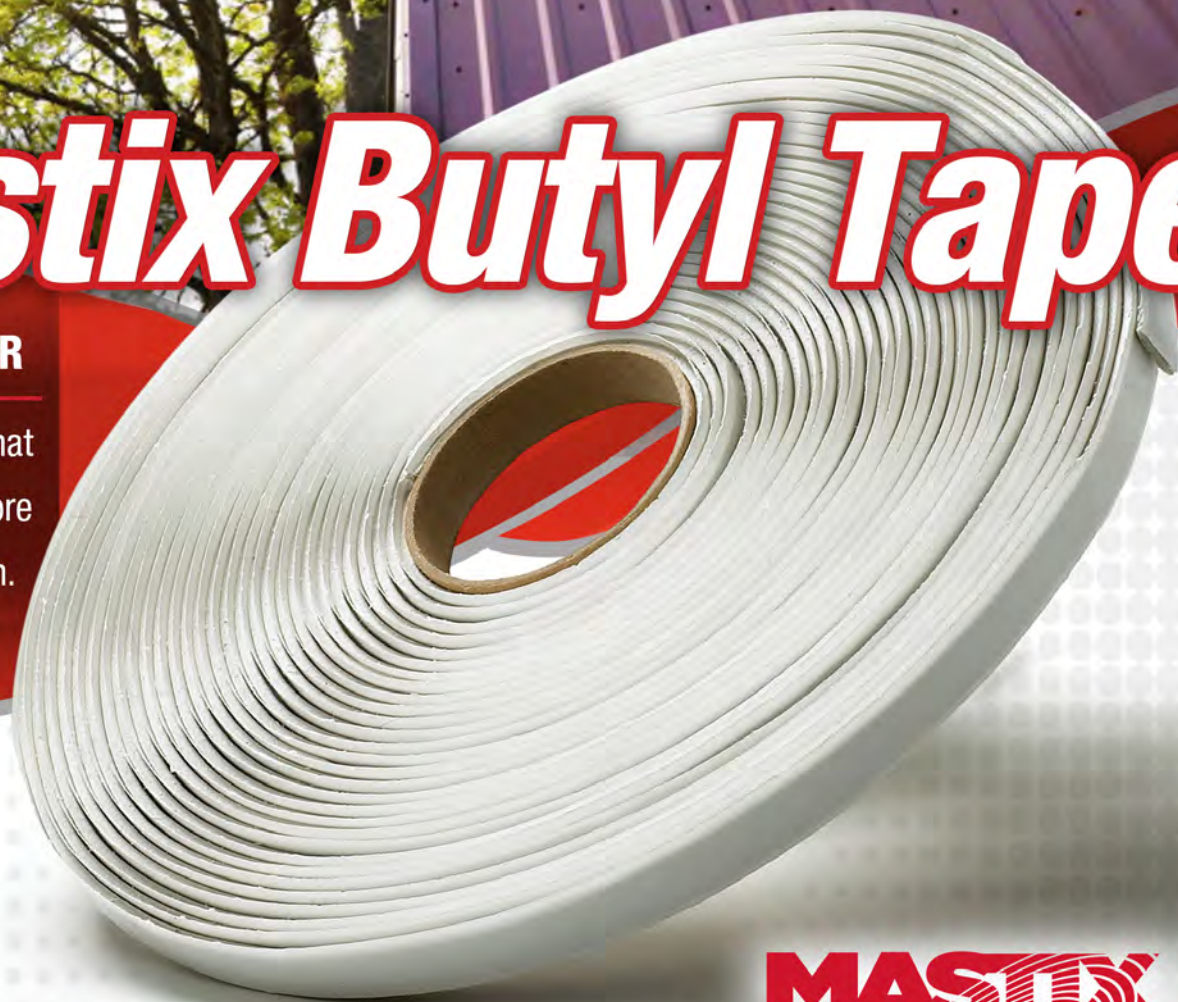
1.800.800.8590 / [Marcoindustries.com](http://Marcoindustries.com)



# Mastix Butyl Tape

## STAYING POWER

Choose the sealant that will stick around before and after installation.



**MASTIX**

### Features:

- ▶ Trimmable joint and end lap sealing tape.
- ▶ Non-staining, permanently flexible.
- ▶ Seals around windows, doors, roof vents, and more.
- ▶ Keeps even hot metal roofing panels in place—no melting or oozing.
- ▶ High quality adhesive.
- ▶ Adhesive prevents the product roll from “telescoping.”
- ▶ Superior adhesive which is end-to-end fit.
- ▶ Joins metal to metal roofing panels.
- ▶ Made in North America

**EXPAND YOUR ROOFING SYSTEM PERFORMANCE**  
**PREVENT LEAKS • PROTECT PROPERTY • ASSURE VENTILATION**

# INSTALLATION INSTRUCTIONS

## VALUE DRIVES EVERYTHING WE DO

Value drives everything we do. That's why we developed a comprehensive line of ventilation products that offer easy installation, remarkable building ventilation, lower utility costs, extended roof deck life, extreme durability, and outstanding warranties. Get more quality, more performance, and more value...from Marco Industries.™

## EASY INSTALL

See our installation online at [marcoindustries.com](http://marcoindustries.com)

Mastix requires no tools for installation. It comes in an easy-to-handle roll and the adhesive is quickly exposed with a simple peel-back.



### Step 1:

Roll Mastix Butyl tape out on through-fastened and standing seam panels, removing the release paper to expose adhesive.



### Step 2:

Position panel over Mastix.



### Step 3:

When positioned, press panel down on Mastix and fasten in place with Quik-Drill™ or QuikGrip™ fasteners.

### SPECS:

**3/32" x 3/8" x 45':** 16 rolls/carton, 30 carton/pallet

**3/32" x 1/2" x 45':** 16 rolls/carton, 30 carton/pallet

**3/32" x 3/4" x 45':** 16 rolls/carton, 30 carton/pallet

**3/32" x 1" x 45':** 12 rolls/carton, 30 carton/pallet

**Chemical Name:** Isobutylene

**Chemical Family:** Butyl Mixture

**Health Hazard:** 0-Minimal

**Flammability Hazard:** 0-Minimal

**Reactivity Hazard:** 0-Minimal

**Volatile (WL)%:** 0

**Solubility in Water:** Insoluble

**Specific Gravity:** (H2O=1) 1.59-1.64

**Evaporation Rate:** Not Applicable

**Appearance:** Soft, pliable gum

**Color:** Q-126 (off-white to gray), Q126BB (black), Q-126-10 (off-white to gray)

**Odor:** None



1.800.800.8590 / [Marcoindustries.com](http://Marcoindustries.com)





# ***Weather-Tite™ Metal Roof Sealant***



**SPECIFICALLY FORMULATED TO OUT PERFORM  
ALL OTHER SEALANT TECHNOLOGIES.**

## **Features:**

- ▶ Waterproof seal against water, wind, dust, dirt or other filtrations.
- ▶ Adheres to almost any common building substrate or material.
- ▶ Extrudes in extreme weather conditions (down to 0° F) and is UV-resistant.
- ▶ 18 month shelf life.
- ▶ Chemically curing <1% VOC
- ▶ Tack-free in 40 minutes
- ▶ 14 standard colors

**EXPAND YOUR ROOFING SYSTEM PERFORMANCE**  
**PREVENT LEAKS • PROTECT PROPERTY • ASSURE VENTILATION**

# INSTALLATION INSTRUCTIONS

## VALUE DRIVES EVERYTHING WE DO

Value drives everything we do. That's why we developed our Steep Slope Ventilation Division. This comprehensive line of products offer easy installation, remarkable building ventilation, lower utility costs, extended shingle and roof deck life, extreme durability, and outstanding warranties. Get more quality, more performance, and more value... from Marco Industries™

## EASY INSTALL

See our installation online at [marcoindustries.com](http://marcoindustries.com)

Marco's Weather-Tite Metal Roof Sealant comes in a variety of colors and goes on easily. If touch-ups are necessary, it may be painted (excluding translucent) with a water-based paint after one hour of application.



**Step 1:**



**Step 2:**



**Step 3:**

### SPECS:

**Water Clean-Up:** Yes

**Non-Toxic:** Yes

**Non-Flammable:** Yes

**VOC-Compliant:** <1% VOC

**Cold Weather Extrusion:** 0° F

**Waterproof:** Yes

**Tensile Strength:** 225 psi

**Conforms to ASTM C920:** Yes

**Tack-Free:** Tack-Free in 1 Hour @ 77° F / 50% RH\

**Gap Filling:** 1"

**Service Temperature:** -75° to 300° F for short periods of time

**UV Rating:** Conforms to ASTM G26

**Elongation:** 275%

**Cartridge:** Plastic – 10.1 oz.

**Warranty:** Limited

**Hazardous Ingredients:** None

### SAMPLE COLORS:



White



Bright White



Tan



Sandstone



Cocoa Bean



Bronze



Pebble Gray



Gray



Charcoal



Black



Forest Green



Red



Ultra Clear



Translucent



1.800.800.8590 / [Marcoindustries.com](http://Marcoindustries.com)





Roofing Ventilation & Accessories



# MarcoFlex™

## WEATHER-TITE™ • GUNNABLE BUTYL

**A NON-SKINNING / NON-HARDENING BUTYL SEALANT THAT PROVIDES EXCELLENT ADHESION**



MarcoFlex is a versatile ever-flexible sealant suitable for metal roofing, architectural panels, window glazing, expansion joints, flashing, and other bonding applications.

### Features:

- ▶ Excellent Chemical Resistance
- ▶ Permanently Flexible
- ▶ Non-Corrosive to Metals
- ▶ Excellent Adhesion to Oily Metal Surfaces and Other Materials
- ▶ Low Shrinkage
- ▶ Ideal for use as Seam Sealant in Roll Forming Applications
- ▶ Safe for use on Kynar 500, Zinalume, Galvalume, Aluminum, and most other Metals

### Technical Information:

PROPERTIES	VALUE-RESULT	TEST METHOD
Weight:	12-13 lbs./gal.	ASTM D71-72
Color:	Tan or Light Gray	Internal Lab
Order:	Light Solvent	Internal Lab
Solids Content:	90% +/- 2%	ASTM C771-74
Vaper Transfer:	<1 gram/day	ASTM D96
Flashpoint:	>102f - non-red label	ASTM D93-79
Slump:	Max 3/16" @ 210f	ASTM D2202
Water Absorption:	None	GSTM 21
Weathering:	None at 1000 hrs.	UV Light / Sunlamp
Service Temps:	-40°F/-40°C to 249°F/120°C	
Storage Temps:	0°F/-18°C to 100°F/38°C	*store in clean, dry area
Shelf Life:	18 months	

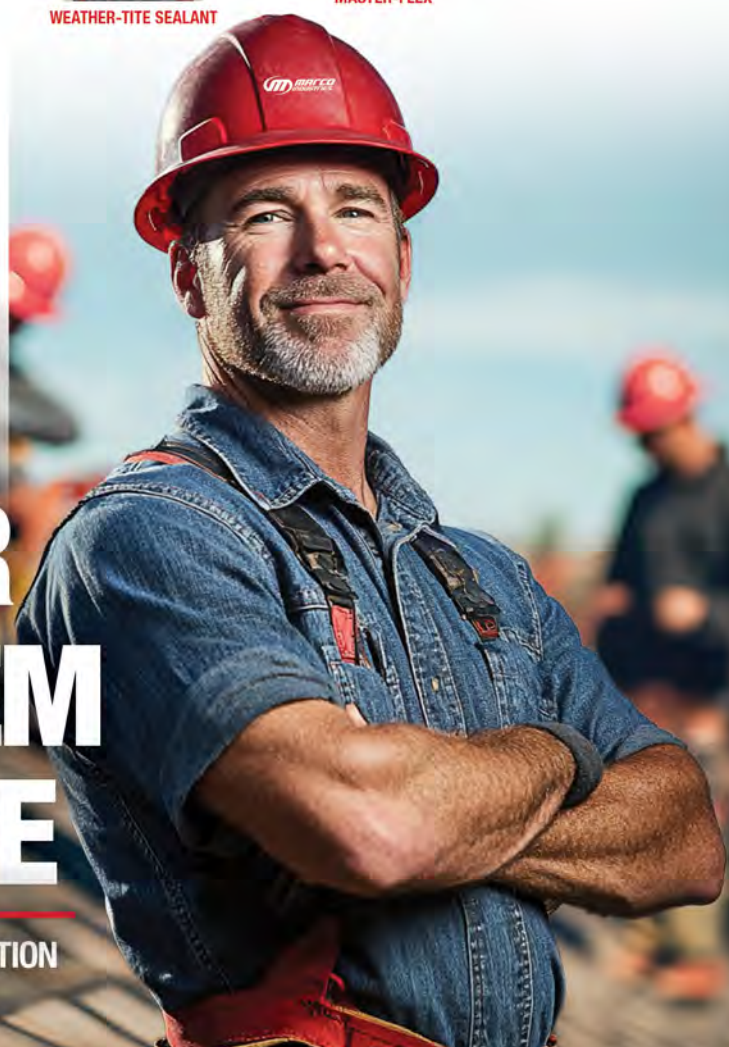
**EXPAND YOUR ROOFING SYSTEM PERFORMANCE**  
**PREVENT LEAKS • PROTECT PROPERTY • ASSURE VENTILATION**

**QUALITY MADE ROOFING PRODUCTS ... YOU CAN ALWAYS COUNT ON.**



Roofing Ventilation & Accessories

# EXPAND YOUR ROOFING SYSTEM PERFORMANCE



PREVENT LEAKS • PROTECT PROPERTY • ASSURE VENTILATION  
1-800-800-8590 / [www.marcoindustries.com](http://www.marcoindustries.com)



Roofing Ventilation & Accessories

# HydraShell™ Max

## SUPERIOR SYNTHETIC PROTECTIVE UNDERLAYMENT

When you need a high strength light weight synthetic roof underlayment, HydraShell™ Max is the choice for you. water resistance, a wrinkle-free surface, and resistance to UV-breakdown.



### Features:

- ▶ 25 times stronger than Type 15 felt and 12 times stronger than type 30 felt.
- ▶ Requires fewer fasteners and provides a tough, durable deck cover.
- ▶ Stays flexible in cold weather
- ▶ It installs quickly, easier and with less risk. It's lighter and stronger with a larger covering area.
- ▶ Cool gray surface to reduce heat build-up.
- ▶ Won't wrinkle or absorb water.
- ▶ 30 year limited warranty applies to Max. Contact Marco for more details.
- ▶ Designed for use under all types of roofing materials; including: asphalt shingles, synthetic shingles, cedar shakes, and metal

**EXPAND YOUR ROOFING SYSTEM PERFORMANCE**  
**PREVENT LEAKS • PROTECT PROPERTY • ASSURE VENTILATION**

## MAX UNDERLAYMENT

### VALUE DRIVES EVERYTHING WE DO

Value drives everything we do. That's why we developed a comprehensive line of ventilation products that offer easy installation, remarkable building ventilation, lower utility costs, extended roof deck life, extreme durability, and outstanding warranties. Get more quality, more performance, and more value...from Marco Industries™



### SPECS:

Roll Dimensions: 40"/300"  
 Permeability: 0.1 perms  
 Water Transmission: Pass  
 Tear Strength: 33lbs MD/24 lbs CD  
 Tensile Strength: 95 lbs MD/85 lbs CD  
 Burst Strength: 160 psi  
 Elongation: 20%  
 Weight Per Square: 1.96 lbs  
 Nominal Thickness: 6.2 mils  
 Temp. Range (Internal): -70° F to 240° F



### You May Also Need:

Roof Boots™ / Weather-Tite™ Metal Roof Sealant

### EASY INSTALL

See our installation instructions online at [MarcoIndustries.com](http://MarcoIndustries.com). HydraShell Max is lighter than felt so its easier to handle. It offers more coverage per roll, and is pre-printed with a nailing pattern for easier installation.



#### STEP 1:

Lay out horizontally on the eave, printed side up, with 3" horizontal laps and 6" vertical laps.



#### STEP 2:

Fasten with 1" diameter plastic cap roofing nails or cap staples according to the pre-printed nail pattern.

1.800.800.8590 / [Marcoindustries.com](http://Marcoindustries.com)



Roofing Ventilation & Accessories

# HydraShell™ Premium

## SUPERIOR SYNTHETIC PROTECTIVE UNDERLAYMENT

Premium offers superior strength and durability, dynamic steep-slope traction for a variety of weather conditions, water resistance, a wrinkle-free surface, and resistance to UV-breakdown.

### Features:

- ▶ **STRONGER:** than Type 15 or 30 felt and easier to handle during installation.
- ▶ **LIGHTER:** Up to four times lighter than competitive products, making it easier to handle during all installation stages.
- ▶ **RATED FOR:** commercial & residential applications using plastic caps & roofing nails (3/8" head) for a variety of roofing materials.
- ▶ **SIMPLER TO APPLY:** installs quickly, easier and with less risk. It's lighter and stronger with a larger covering area.
- ▶ **WON'T BUCKLE, WARP OR CRACK:** superior lay-flat properties and water resistance keeps Premium from warping, wrinkling, and cracking in cold weather.
- ▶ **WARRANTY:** Lifetime limited warranty applies to Premium. Contact Marco for more details.
- ▶ **SAFER:** skid-resistant polymer coating and proprietary Fiber Claw™ walking surface offers dynamic traction.
- ▶ **Exposure:** 180-day UV exposure rating.

**EXPAND YOUR ROOFING SYSTEM PERFORMANCE**  
**PREVENT LEAKS • PROTECT PROPERTY • ASSURE VENTILATION**

## PREMIUM UNDERLAYMENT

### VALUE DRIVES EVERYTHING WE DO

Value drives everything we do. That's why we developed a comprehensive line of ventilation products that offer easy installation, remarkable building ventilation, lower utility costs, extended roof deck life, extreme durability, and outstanding warranties. Get more quality, more performance, and more value...from Marco Industries.™

PROPERTY	STANDARD	UOM
Thermal Stability	ASTM D 882	MD 41/CD 37
Tear Resistance	ASTM D 4533	MD 41/CD 37
Rupture Resistance	ASTM D 3462-02 (LBF)	87
Beach Puncture	ICC AC-08	Pass
Long Term Sag	ICC AC-08	Pass
Liquid Water Transmission	ASTM D 4869-02	Pass
Ultra Violet Aging	ICC-ES AC 188	Pass
Accerlerated Aging	ICC-ES AC 188	Pass

### SPECS:

Roll size: 48" x 250' (1.22m x 76.20m)  
 ASTM D 226, Type 1 & 2: Standard Specification for Asphalt-Saturated Organic Felt Used in Roofing and Waterproofing.

CSA A123.3 Type I & II: Asphalt Saturated Organic Roofing Felt  
 ASTM E 108 – Class A: Standard Test Methods for Fire Tests of Roof Coverings

CSA A 220.1: Acceptance Criteria for Concrete Roof Tile



LIFETIME  
LIMITED WARRANTY



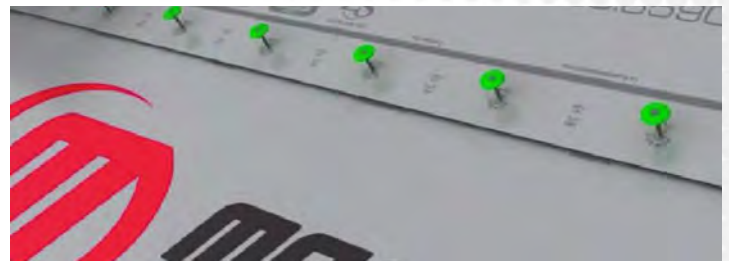
### EASY INSTALL

See our installation instructions online at [MarcoIndustries.com](http://MarcoIndustries.com). HydraShell Premium is lighter than felt so its easier to handle. It offers more coverage per roll, and is pre-printed with a nailing pattern for easier installation.



#### STEP 1:

Lay out horizontally on the eave, printed side up, with 3" horizontal laps and 6" vertical laps.



#### STEP 2:

Fasten with 1" diameter plastic cap roofing nails or cap staples according to the pre-printed nail pattern.

1.800.800.8590 / [Marcoindustries.com](http://Marcoindustries.com)



# HydraShell™ Supreme

## DESIGNED TO USE ON STEEPER SLOPE ROOFS

HydraShell™ Supreme has a non-woven walking surface and specially formulated low slip bottom side coating offering a safer installation process.

### Features:

- ▶ 20 times stronger than #30 felt. and 12 times stronger than type 30 felt.
- ▶ Less weight per roll. Each 10 square roll weighs less than 26 lbs.
- ▶ Stays flexible in cold weather.
- ▶ It installs quickly, easier and with less risk. It's lighter and stronger with a larger covering area.
- ▶ Cool gray surface to reduce heat build-up.
- ▶ 90-day UV exposure rating.
- ▶ Nonwoven walking surface and specially formulated, low-slip, bottom-side coating.
- ▶ Superior lay-flat properties: won't wrinkle or absorb water.
- ▶ Class A fire rating.

**EXPAND YOUR ROOFING SYSTEM PERFORMANCE**  
**PREVENT LEAKS • PROTECT PROPERTY • ASSURE VENTILATION**

# SUPREME UNDERLAYMENT

## VALUE DRIVES EVERYTHING WE DO

Value drives everything we do. That's why we developed a comprehensive line of ventilation products that offer easy installation, remarkable building ventilation, lower utility costs, extended roof deck life, extreme durability, and outstanding warranties. Get more quality, more performance, and more value...from Marco Industries.™



### SPECS:

Roll Dimensions: 40"/300"

Permeability: 0.1 perms

Water Transmission (ASTM D4869): Pass

Tear Strength: 38 lbs MD/37 lbs CD

Tensile Strength: 120 lbs MD/115 lbs CD

Burst Strength: 160 psi

Elongation: 20%

Weight Per Square (ASTM D5261): 2.46 lbs

Nominal Thickness (ASTM D1777): 7.5 mils

Temp. Range (Internal): -70° F to 240° F



## You May Also Need:

Roof Boots™ / Weather-Tite™ Metal Roof Sealant

## EASY INSTALL

See our installation instructions online at [MarcoIndustries.com](http://MarcoIndustries.com). HydraShell Supreme is lighter than felt so its easier to handle. It comes 10 squares to a roll, offering more coverage per roll, and is pre-printed with a nailing pattern for easier installation.



### STEP 1:

Lay out horizontally on the eave, printed side up, with 3" horizontal laps and 6" vertical laps.



### STEP 2:

Fasten with 1" diameter plastic cap roofing nails or cap staples according to the pre-printed nail pattern.

1.800.800.8590 / [Marcoindustries.com](http://Marcoindustries.com)

# HydraShell™ Supreme SA

**THE BEST CHOICE IN  
HIGH-TEMP, EASY TO HANDLE,  
SELF-ADHERING UNDERLAYMENT.**

Supreme SA helps to protect a building's deck or internal structure against leaks caused by ice and water damming and wind-driven rain.

## Features:

- ▶ Split-back release film peels offer easy installation.
- ▶ Exceptionally durable high tensile/tear strengths.
- ▶ Adheres to a variety of substrates.
- ▶ Polymer-modified asphalt gives excellent pliability.
- ▶ Cool gray surface to reduce heat build-up.
- ▶ 90-day UV exposure rating.
- ▶ Helps to protect structures against leaks caused by ice and water damming and wind-driven rain.
- ▶ Provides superior leak protection for all areas of a standard roof.
- ▶ 30-year limited warranty.

**EXPAND YOUR ROOFING SYSTEM PERFORMANCE**  
**PREVENT LEAKS • PROTECT PROPERTY • ASSURE VENTILATION**

# SUPREME SA UNDERLAYMENT

## VALUE DRIVES EVERYTHING WE DO

Value drives everything we do. That's why we developed a comprehensive line of ventilation products that offer easy installation, remarkable building ventilation, lower utility costs, extended roof deck life, extreme durability, and outstanding warranties. Get more quality, more performance, and more value...from Marco Industries.™



### SPECS:

Roll Dimensions: 36"/67'  
 Roll Weight: 55lbs  
 Area Per Carton: 201 ft<sup>2</sup>  
 Cartons Per Pallet: 25  
 Permeability(ASTM E96): .067 perms  
 Nail Sealability(D1970): Pass  
 Adhesion To Plywood @ 75° F (D903): >12 lbs/ft  
 Adhesion To Plywood @ 40° F (D903): >2 lbs/ft  
 Mill Thickness (ASTM D5147): .44  
 Flexibility at -20° F (D1970): Pass  
 High Temperature Rating: 240° F  
 ASTM D 1970 | ASTM D4869 | CSA A 123.22



### You May Also Need:

Roof Boots™ / Weather-Tite™ Metal Roof Sealant

## EASY INSTALL

See our installation instructions online at [MarcoIndustries.com](http://MarcoIndustries.com). HydraShell Supreme SA features a split-back release film that peels off for easy installation. The clean, easy-to-handle, self-adhering application makes installation quick and efficient.



### STEP 1:

Tack/secure the end of the roll with a nail.  
 Unroll the membrane 3-6 feet.



### STEP 2:

Carefully remove the upper release liner, align the membrane and continue to peel the release liner from the membrane in place with **heavy hand or roller pressure**.



### STEP 3:

When finished with the desired length, repeat the process at the starting point by removing the remaining poly release film and pressing the membrane in place with heavy hand or roller pressure. Slide laps (horizontal laps) must be a minimum of 3" and end laps a minimum of 6".

1.800.800.8590 / [Marcoindustries.com](http://Marcoindustries.com)



Roofing Ventilation & Accessories



# HYDRASHELL™ MAX-GRIP

## A DURABLE UNDERLAYMENT WITH MAXIMUM SURFACE GRIP

MAX-GRIP is a high-performance, self-adhesive roofing underlayment, designed for superior protection against ice and water intrusion.

Engineered with a granulated surface that provides enhanced traction and a firm, confident feel underfoot. The under surface is an easily detachable silicon based release film covering a highly adhesive layer of asphalt.

### Features & Benefits

- ▶ **Conforms to** CSA A123.22-08 and ASTM D1970.
- ▶ **Excellent** adhesion to multiple substrates.
- ▶ **Product performance** tear and puncture resistant, rot resistant.
- ▶ **Moisture** vapour barrier.
- ▶ **Size Structor** good dimensional stability.
- ▶ **High** flexibility.
- ▶ **Split** release film for easy application.
- ▶ **Standards** complies with the standards of ASTM D1970 and CSA A123.22-08.
- ▶ **Protects Against** ice and water intrusion that may damage the roofing system.

**EXPAND YOUR ROOFING SYSTEM PERFORMANCE**  
**PREVENT LEAKS • PROTECT PROPERTY • ASSURE VENTILATION**



# HYDRASHELL™ MAX-GRIP

## HydraShell Max-Grip

**MAX-GRIP** is a self-adhesive roofing underlayment constructed of a glass mat carrier coated with our popular blend of SBS polymers, premium asphalt, and additives that gives the membrane the perfect combination of durability and flexibility. **MAX-GRIP** top surface is a sanded layer, and the under surface is an easily detachable siliconbased release film covering a highly adhesive layer of asphalt. **MAX-GRIP** is used as an underlayment on high-sloped roof decks to protect against ice and water intrusion that may damage the roofing system. The sheet is highly effective against possible ridge build-up of ice dams on rakes, eaves, and valleys of steep roofs.

### PHYSICAL PROPERTIES

Dimensions	36" x 65'
Nominal Thickness	1.1 mm    43 mils
Nominal Weight	25 kg    55 lbs
No. on Pallet	30 Rolls

Top Surface	Sand
Bottom Surface	Split Release Film
Gross Coverage	18 m <sup>2</sup>    (197 sqft)
UV Exposure	17m <sup>2</sup> (179 sqft)

### TEST STANDARDS

TEST PROPERTY	REQUIREMENTS	TEST METHOD
Maximum Load (L, T)	4.4 KN / m	ASTM D2523
Elongation at Break (L, T)	10%	ASTM D2523
Adhesion to Plywood at 4°C, min	0.92 kg/30.5 cm	ASTM D903
Adhesion to Plywood at 23°C, min	5.44 kg/30.5 cm	ASTM D903
Thermal Stability	3 mm	ASTM D1204
Flexibility Temperature	-29 °C	ASTM D1970
Tear Resistance (L, T)	89 N	ASTM D4073
Waterproof Integrity of Lap Seam	Pass	ASTM D1970
Sealability Around Nail	Pass	ASTM D7349
Moisture Vapour Permeance, max	5.7 ng/Pa.S.M <sup>2</sup>	ASTM E96
Slip Resistance	Pass	ASTM D1970



### Roll/Pallet Specs

Length per roll: 65'  
 Width per roll: 36"  
 Weight per roll: 55 lbs  
 Roll size: 36" x 65'  
 Rolls per pallet: 30  
 Weight per pallet: 1650 lbs

This Technical Data is the average result of tests, measurements, and trials carried out by MARCO's own laboratory in accordance to international standards such as ASTM, BS, and UEAtc. acceptable deviation according to UEAtc. Nothing contained within the technical tables is represented by a warranty or guarantee for which MARCO can be held legally responsible.

**Switch to MAX-GRIP**  
**and experience better**  
**roofing safety with**  
**your underlayment.**  
**Contact us today!**

1-800-800-8590 / [marcoindustries.com](http://marcoindustries.com)





Roofing Ventilation & Accessories

# HYDRASHELL™ WEATHER-TITE HT



**EXPERIENCE SUPERIOR  
DURABILITY AND PROTECTION  
IN ALL WEATHER CONDITIONS**

Weather-Tite HT is specifically formulated for high-temperature roofing applications, making it the perfect underlayment for metal roofs, asphalt shingles, and other steep-slope roofing systems. It is particularly effective in regions with high solar exposure or where metal roofing is preferred.

**DOUBLE SIDED  
ADHESIVE  
LAP SEAL**

## Features & Benefits

- ▶ **Conforms to:** CSA A123.22-08 and ASTM D1970.
- ▶ **Superior Adhesion** exceptional bitumen-to-bitumen adhesion for watertight seams.
- ▶ **Product performance:** tear and puncture resistant, rot resistant.
- ▶ **High-Temperature Resistance:** Capable withstanding temperatures up to 125°C (257°F) ideal for metal roofing systems.
- ▶ **Split release film** for easy application.
- ▶ **Slip-Resistant Surface:** The anti-slip film provides a safer working surface, even in challenging conditions.
- ▶ **UV Resistant Surface:** Enhanced UV-resistant formulation allows for prolonged exposure to sunlight for up to 12 months without degradation.
- ▶ **Weather-Tite HT Lap Seal:** Engineered over-lap seal, that ensures a superior leak proof seal that will protect the life of your roof.

**EXPAND YOUR ROOFING SYSTEM PERFORMANCE**  
**PREVENT LEAKS • PROTECT PROPERTY • ASSURE VENTILATION**

## HydraShell Weather-Tite HT

**Weather-Tite HT** is a premium-grade, high-temperature self-adhering roofing underlayment engineered for superior durability and performance. Designed to withstand extreme conditions, this underlayment provides robust protection beneath metal roofs and asphalt shingles. The advanced anti-slip top surface ensures safe and efficient application, while the bottom layer features a high-tack, asphalt-based adhesive with a split-release liner for easy installation.

### PHYSICAL PROPERTIES

Dimensions	0.915x20m    36" x 65'
Nominal Thickness	1.2 mm    48 mils
Nominal Weight	26.5 kg    58 lbs
No. on Pallet	30 Rolls

Top Surface	Anti-Slip
Bottom Surface	Split Release Film
Gross Coverage	18.3 m <sup>2</sup>    197 sqft
UV Exposure	12 months

### TEST STANDARDS

TEST PROPERTY	REQUIREMENTS	TEST METHOD
Compound Stability	> 125°C (257°F)	ASTM D36
Maximum Load (L, T)	4.4 KN / m	ASTM D2523
Elongation at Break (L, T)	10%	ASTM D2523
Adhesion to Plywood at 4°C, min	0.92 kg/30.5 cm	ASTM D903
Adhesion to Plywood at 23°C, min	5.44 kg/30.5 cm	ASTM D903
Thermal Stability	3 mm	ASTM D1204
Flexibility Temperature	-29° C (20°F)	ASTM D1970
Tear Resistance (L, T)	89 N	ASTM D4073
Waterproof Integrity of Lap Seam	Pass	ASTM D1970
Sealability Around Nail	Pass	ASTM D7349
Moisture Vapour Permeance, max	5.7 ng/Pa.S.M <sup>2</sup>	ASTM E96
Slip Resistance	Pass	ASTM D1970

### Roll/Pallet Specs

Length per roll: 65'  
 Width per roll: 36"  
 Weight per roll: 55 lbs  
 Roll size: 36" x 65'  
 Rolls per pallet: 30  
 Weight per pallet: 1650 lbs

This Technical Data is the average result of tests, measurements, and trials carried out by MARCO's own laboratory in accordance to international standards such as ASTM, BS, and UEAtc. acceptable deviation according to UEAtc. Nothing contained within the technical tables is represented by a warranty or guarantee for which MARCO can be held legally responsible.

**Switch to **Weather-Tite HT**  
 and experience superior  
 durability in extreme weather  
 conditions and robust  
 protection for your roof.  
 Contact us today!**



Roofing Ventilation & Accessories

# HYDRASHELL™ AIRX-30

*with Sahara Technologies*

## BREATHABLE SYNTHETIC ROOF UNDERLAYMENT

HydraShell AIRX-30 is a premium multi-layered structure with a slip-resistant textured top surface combined with our advanced breathable Moisture Release Technology (MRT). MRT actively assists in drawing trapped moisture from within the roof system and releasing it to the outside air.

### Features & Benefits

- ▶ **All temp.** All weather performance; remains flexible and easy to install in freezing or extremely hot conditions (-40°F to 240°F)
- ▶ **Minimizes stretching** around fasteners with no blow-offs!
- ▶ **Meets the performance** requirements of CAN/CSA A220.1 and CAN/CSA A123.3 synthetic underlayment.
- ▶ **Meets ASTM D226 Type I and II and ASTM D4869 Types II & IV.**
- ▶ **Class A Fire Rating** - ASTM E108
- ▶ **Moisture Release Technology**
- ▶ **Excellent water resistance**
- ▶ **High strength to weight ratio**
- ▶ **Minimizes stretching** around fasteners with no blow-offs!
- ▶ **Limited Lifetime Warranty**

**EXPAND YOUR ROOFING SYSTEM PERFORMANCE**  
**PREVENT LEAKS • PROTECT PROPERTY • ASSURE VENTILATION**



## HydraShell AIRX-30

Using AIRX-30™ breathable underlayment allows roof decks that have been exposed to rain or snow during construction to dry after the primary roof has been installed. Breathability is key to preventing mold, mildew and possible structural damage. Specifying AIRX-30™ breathable underlayment gives you the competitive edge by providing your clients the confidence and security they are looking for to compliment their premium lifetime warranty roofing system. AIRX-30's textured slip-resistant walking surface provides superior steep-slope walkability, productivity, comfort and increased safety for roofers. AIRX-30™ is designed for use under asphalt shingles, concrete and clay tiles, all metal panels, synthetic shingles and primed cedar shakes. AIRX-30™ meets all the code requirements including ASTM D226, ASTM D4869 and AC 188 as required by ICC-ES.

### Test/Standard\*

### Typical Value

Tensile Strength ASTM D5034	MD 85 lbs (38.5kg)   CD 70 lbs (31.7 kg)
Tear Strength ASTM D4533	MD 32 lbs (14.5 kg)   CD 25 lbs (11.3 kg)
Liquid Water Transmission ASTM D4869	Pass
Fire Rating ASTM E108	Class A
Puncture Resistance ASTM D751	150 Psi
Permeability (MVTR) ASTM E96	8 Perms
UV Exposure Period ASTM G154	6 Months
Temperature Range	-40° F to 240° F

### Roll/Pallet Specs

Length per roll: 250' / 76.2 m  
 Width per roll: 48" / 1.2 m  
 Weight per roll: 28 lbs / 12.7 kg  
 Roll size: 10 sq / 93 m<sup>2</sup>  
 Rolls per pallet: 25  
 Weight per pallet: 1230

\*Test data is based on average taken over several production runs and should not be considered or interpreted as minimum or maximum values. Values are typical data and not limiting specifications. All values ± 10 %. This product is manufactured in accordance with national standards which allow for non-critical variances in weights and measures.  
 †When correctly installed as per installation instructions. All product installation instructions are available to download or view from our website.



**Switch to AIRX-30  
and start saving on  
labor, time & money.  
Contact us today!**



800.800.8590 - [marcoindustries.com](http://marcoindustries.com)

