



# ***RHINOCO TRADE SPECIALS***

***WE ARE HERE TO SUPPORT YOU***

***CAMERAS - ALARMS - INTERCOMS - ACCESS - LIGHTING  
SOLAR - BATTERY STORAGE - DISPLAYS - ELECTRICAL***

## **BRANDS BACKED LOCALLY**

**AUSTRALIAN EXPERTISE TO SUPPORT YOUR INSTALLS**



***BUY ONLINE NOW: VISIT RHINO.AU***

***CALL (02) 9671 6711 - SALES@RHINO.AU  
SAME DAY SHIPPING - VISIT US IN STORE***



**We're dedicated to winning you more business.**

**RhinoCo Technology** is your premier **wholesale and distribution** company, specialising in CCTV, security, alarms, lighting, electrical and battery systems.

We have branches located across Sydney for local pickups, and with fast Australia-wide shipping, RhinoCo always has you covered.

We are dedicated to your business' success and, by becoming a RhinoCo Technology customer, we promise to share our **over 48 years experience** to help you achieve that success.



### **RhinoCo Technology Locations:**

**McGraths Hill Head Office & Support**  
9 Hannabus Place McGraths Hill, NSW 2756

**Haberfield Showroom & Sales Office**  
223-225 Ramsay Street Haberfield, NSW 2045

**Guildford Showroom & Sales Office**  
577 Woodville Road Guildford, NSW 2161

**Thomastown Showroom & Sales Office**  
2 Inglewood Drive Thomastown, VIC 3074





## Before you buy, ask: Who backs this brand in Australia?

At RhinoCo Technology, it is our responsibility to secure the planet, making communities safer and improving standard of living. We believe the best way to do so is to support your installations with our own Australian, locally backed brands.

### Our promise - what backed locally means

- Australian support of our brands for the life of the product
- Clear warranty pathway and local support escalation
- Secure setup guidance and best practice configuration
- Firmware management and technical guidance
- In-house electronics & software expertise for your project
- Custom solutions with our deep product understanding
- Brands that protect the value of your installations
- Locally built knowledge base technical support portal
- RhinoCo tested systems that work for you and your customers

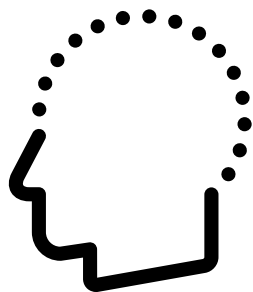


**Security isn't in the camera. It is who stands behind it.**

Offer brands that are backed locally - grow your trade business with RhinoCo today.

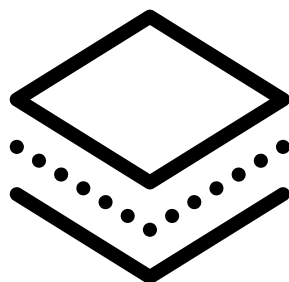
# We help trade professionals solve real-world problems.

From idea to outcome, RhinoCo Technology has helped industry professionals solve technical challenges in their installations using Australian brands and in-house expertise. We help you build winning bespoke solutions.



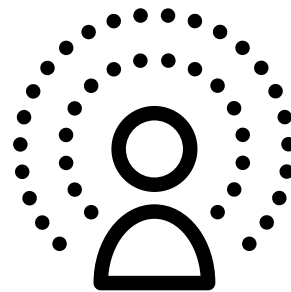
## Deep Product Understanding

We offer a deep product range with comprehensive understanding across surveillance, access control, networking, IoT and power technologies.



## Cloud, Mobile and AI Capabilities

We specialise in building solutions with cloud backend and AI integration for remote management and automation, simplifying deployment and improving efficiency.



## In-house Electronics & Software Expertise

Our local team can develop bespoke firmware and hardware, glue-code for system integration and custom infrastructure to bring your solution to life.

## Do your customers require outside the box thinking?

We're here to help solve your technical challenges - contact RhinoCo Technology today.





# Let us help bring your next installation challenge to life

## Multi-Platform Integration for Surveillance Trailer Deployment

A fleet operator needed real-time status and event alerts for their deployable CCTV trailers. We built a system that integrates GPS, power levels, motion events and live feed snapshots into a single cloud dashboard with on-demand reporting.



## Off-grid Green Waste Recycling Access Management Solution

Using our solar gear, 4G routers and access systems, we helped a customer create a self-contained, remotely managed access gate with real-time alerts and AI-based number plate recognition — even with no permanent power or internet.



## Development of AI Bird Detection Cameras at Communications Towers

We built a system using our IP cameras + custom cloud backend + OpenAI's image APIs to identify bird species nesting on telco towers. The system sends alerts when protected species are detected, helping contractors stay compliant without needing physical inspections.



# Take advantage of our over 48 years experience

At RhinoCo, we will do whatever it takes to help you deliver incredible installations that earn you more and bring value to your business.

Leverage our 48 years of industry experience and let us show you how we can inspire your trade business.



Frank Ferrara, Director



## The best Australian brands.

Succeed using our market leading Australian brands. Choose our well known, unique & protected brands to add value to your installations.



## Industry leading warranty.

RhinoCo backs our brands and products with a leading 4 year or greater warranty on our professional CCTV, alarm, access control and intercoms.



## Providing excellent support.

Save time and effort and get the answers you need with our Australian-based expert technical support team and detailed online knowledge base (Visit <http://help.c5k.info>).



Scan to visit our knowledge base





# Ready to supply you for your next installation



## Same day shipping.

We ship nationally within one day from our 4000m<sup>2</sup> distribution centre, with same day delivery for the Sydney Metro area.



## Here to save you time.

Get to your next job or finish the day earlier - save time on your next install with pre-configured systems in CCTV, WiFi, intercoms, access control & more.



## Price matching & more.

Share your competitor quote & we will match or beat comparable product prices to support you. Leverage our marketing materials to support your quotes and win jobs - business cards, custom brochures, posters, demo stands & more.



## Unique winning solutions.

We custom engineer solutions to your creative installation problems to achieve a winning solution. Ask us how we can support you in your next project.





Alarms & Surveillance

## The latest AI NVRs from VIP Vision & Watchguard



# AI Network Recorders

## The latest NVRs with built-in AI functionality

Add amazing AI features to new installs and upgrade existing IP CCTV to AI



**AI People  
& Vehicle  
Detection**

### NVR Powered AI

Built-in AI People & Vehicle Detection via NVR. Upgrade an NVR for AI or use AI detection without AI cameras. Up to 6m person; 9m vehicle detection (2.8mm lens). Capacity varies per NVR.



**Face Recognition**

### FR as Standard

All AI NVRs now feature face database support and video-stream face detection/recognition, so even small CCTV implementations can utilise Face Recognition technology.



**AI Quick  
Search**

### AI Quick Search

When paired with a Pro AI Series camera, your NVR enables footage search via clothing or vehicle colour when using AI motion detection. Zero in on all key playback events.



# Recorders for every job size



## Compact AI Series 4 - 16 Channel NVRs

- Record beyond Ultra HD up to 16.0MP (4920 x 3264)
- AI human/vehicle motion detection by NVR up to 4 channels
- AI human/vehicle tripwire/intrusion by NVR up to 2 channels
- AI face recognition and AI face database up to 1 channel
- Supports ANPR and people counting cameras
- Decodes 4CH@4K/25fps, up to 256Mbps network bandwidth
- Up to 2 x SATA ports for up to 20TB HDD storage



**NVR4COM-I**  
(4CH, 4 PoE, 1 HDD)

**NVR8COM-I**  
(8CH, 8 PoE, 1 HDD)

**NVR16COM-I**  
(16CH, 16 PoE, 2 HDD)



## Pro AI Series 8 - 64 Channel NVRs

- Record beyond Ultra HD up to 32.0MP (4920 x 3264)
- AI human/vehicle motion detection by NVR up to 8 channels
- AI human/vehicle tripwire/intrusion by NVR up to 4 channels
- AI face recognition & AI face database up to 2 channels
- Supports ANPR, fisheye dewarp\*, people counting cameras
- Decodes up to 8CH@4K/25fps, up to 384Mbps bandwidth
- Up to 8 x SATA (16TB/bay), ePoE, alarm I/O, HDMI/VGA, eSATA
- \*Some features differ for NVR8PRO-I, see datasheet for detail



**NVR8PRO-I**  
(8CH, 2 HDD, PoE)

**NVR16PRO16P-I3**  
(16CH, 4 HDD, PoE)

**NVR32PRO16P-I3**  
(32CH, 4 HDD, 16 PoE)

**NVR32PRO-I3**  
(32CH, 4 HDD)

**NVR64PRO-I3**  
(64CH, 8 HDD)



## Ultimate AI Series 64 & 128 Channel NVRs

- Record beyond Ultra HD up to 32.0MP (4920 x 3264)
- AI human/vehicle motion detection by NVR up to 32 channels
- AI human/vehicle tripwire/intrusion by NVR up to 24 channels
- AI face recognition & AI face database up to 4 channels
- AI video metadata (people and vehicle) up to 8 channels
- Decodes up to 8CH@4K/25fps, up to 1024Mbps bandwidth
- Supports ANPR, fisheye dewarp, people counting cameras
- 8 x SATA (16TB/bay), 2.5Gbps Ethernet, alarm I/O, eSATA, RS232
- 4 x HDMI, 2 x VGA with up to 4 multi-source display output



**NVR64ULT-I**  
(64CH, 8 HDD)

**NVR128ULT-I**  
(128CH, 8 HDD)



Alarms & Surveillance

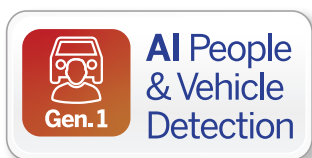
**Watchguard CCTV  
kits now with AI  
detection built-in**



# AI Network Packages

## Affordable AI Security Camera kits with HDDs

Watchguard CCTV kits now include AI cameras for human/vehicle detection



### AI Subject Detection

Up to 97% AI detection accuracy of people and vehicles when using AI motion detection or video rules. AI detects people up to 6m and vehicles up to 9m (2.8mm lens).



SKYHAWK

### Surveillance HDDs

Watchguard uses SkyHawk by Seagate, CCTV surveillance grade storage in all CCTV kits for superior reliability and long runtime under 24/7 recording conditions.



### 4-Year Warranty

The most affordable Watchguard IP CCTV systems also come with RhinoCo's industry leading 4-year warranty, backing the continued performance of Watchguard systems.



# LA-Series AI surveillance kits



## 6.0MP AI CCTV Kits with 4 Cams (2TB)

- 1 x Watchguard NVR, PoE, 1 x HDD bay, 80Mbps
- 1 x Pre-installed 2TB SkyHawk surveillance HDD
- 4 x AI human/vehicle detection turrets, 6.0MP@20fps, 2.8mm (105°), 30m IR, full metal IP67 housing, PoE/12VDC

4 Channel

NVRKIT-LA462-4C  
(4CH, 4CAMS, 2TB)

8 Channel

NVRKIT-LA862-4C  
(8CH, 4CAMS, 2TB)



## 6.0MP LA-Series AI Turret Dome Camera

- AI human/vehicle detection via tripwire & intrusion rules, or smart motion detection
- Stream 6.0MP@20fps (3072 x 2048)
- 2.8mm lens (105°), 30m infrared
- Starlight, true WDR 120dB
- IP67 rated metal chassis

VSIPL-6DIRG-I  
(6MP, 105°)

VSIBKT204W (wall)

VSIBKTA139 (box)



## SECURVIEW

### Pre-terminated CAT5e Data Leads

- Available in 10m, 20m & 30m for small IP installs
- Choose to complete your L-Series CCTV kit
- See full data cable range later in this brochure

NETCABLE10 (10m)  
NETCABLE20-Z (20m)  
NETCABLE30-Z (30m)





Professional IP Solutions

# AI security lighting built into every VIP Vision camera



**AI People  
& Vehicle  
Detection**  
Gen. 2



**AI Scene  
Adaptive**



**AI Smart  
Dual Light**



**AcuPick  
search**

**4.0  
MEGAPIXEL**

**6.0  
MEGAPIXEL**

**4K  
ULTRA HD**



## Smart Illumination Pro AI Series Cameras

- Available in 3 resolutions: 4.0MP, 6.0MP and 8.0MP/4K models
- Fixed lens or motorised varifocal lens bullet/dome/turrets
- Discreet infrared at night; AI person (12m)/vehicle detection (18m) turns on white LEDs to deter intruders & capture colour footage
- AcuPick search finds person/vehicle subjects across all cameras
- IP67 professional metal chassis across range (+IK10 domes)

- 1. Infrared for Discreet Night Operation**
- 2. AI Detection of Person or Vehicle**
- 3. White LED Security Light Activates**
- 4. Colour video with Security Light Deterrent**



**Models available in:**

**Fixed | Varifocal**

**4MP | 6MP | 8MP**

**Bullet | Vandal Dome | Turret**

### Fixed Bullets

VSIPP-4BIRG-I3 (4MP)  
VSIPP-6BIRG-I3 (6MP)  
VSIPP-8BIRG-I3 (8MP)

### Varifocal Bullets

VSIPP-4BIRMG-I3 (4MP)  
VSIPP-6BIRMG-I3 (6MP)  
VSIPP-8BIRMG-I3 (8MP)

### Fixed Vandal Domes

VSIPP-4DIRD-I3 (4MP)  
VSIPP-6DIRD-I3 (6MP)  
VSIPP-8DIRD-I3 (8MP)

### Fixed Wedge Dome

VSIPP-4DIRF-I2 (4MP)

### Varifocal Vandal Domes

VSIPP-4DIRMD-I3 (4MP)  
VSIPP-6DIRMD-I3 (6MP)  
VSIPP-8DIRMD-I3 (8MP)

### Fixed Turret Domes

VSIPP-4DIRG-I3 (4MP)  
VSIPP-6DIRG-I3 (6MP)  
VSIPP-6DIRG-I3-B (Black)  
VSIPP-8DIRG-I3 (8MP)  
VSIPP-8DIRG-I3-B (Black)

### Varifocal Turret Domes

VSIPP-4DIRMG-I3 (4MP)  
VSIPP-6DIRMG-I3 (6MP)  
VSIPP-8DIRMG-I3 (8MP)



# Deter intruders with VIP Vision Active Deterrence



## VIP Vision 180° AI Active Deterrence

### Capture & Deter Intruders Across Large Areas

- 180° panoramic lens with 2 x 4MP for 8MP combined footage
- Siren & red/blue LED light & customisable speaker message
- Customisable siren tones or voice messages & two way talk
- Trigger alerts for AI detection, including people and vehicles
- IP67 rated and professional metal chassis across range

**VSIPP-8BD-ID3 (8.0MP, Bullet)**

**VSIPP-8DD-ID3 (8.0MP, Turret)**

**Models available in Black (-B)**



## VIP Vision AI Active Deterrence Cameras

### Deter Intruders with Siren, Red/Blue Strobe

- Available in 6MP & 8MP models, each with 2.8mm wide lens
- Siren & red/blue LED light & customisable speaker message
- Customisable siren tones or voice messages & two way talk
- Trigger alerts via AI; AcuPick finds person/vehicles detected
- IP67 rated and professional metal chassis across range

**VSIPP-6DG-ID4  
(6.0MP Turret)**

**VSIPP-8DG-ID4  
VSIPP-8DG-ID4-B  
(8.0MP, (-B) Black)**



## VIP Vision AI Low Light Pro Cameras

### The best in low light with AI colour image processing

- Pro low light colour for the best in night surveillance performance
- Large 1/1.8" image sensor, F1.0 max. aperture and AI low light ISP
- In 5MP turret or 8MP deterrence turret, each with 2.8mm wide lens
- White LED light (5MP) or full active deterrence turret camera (8MP)
- Trigger alerts for AI functions, including people and vehicles
- IP67 rated and professional metal chassis across range

**VSIPP-5DIRG-I2-P  
(5.0MP White LED  
Turret)**

**VSIPP-8DG-ID4-P  
(8.0MP, Active  
Deterrence Turret)**





Professional IP Solutions

# Capture wide angle and PTZ details with Multi Vision



## Pro AI Series Multi Vision PTZ + 180° Turret

- Complete site coverage via 8MP 180° turret; detail via 4MP PTZ
- Stream 8.0MP@25fps (Turret) and 4.0MP@25fps (PTZ)
- Receive alerts and search footage by AI vehicle/person detection
- PTZ auto tracking via AI people/vehicle detection, 25x optical zoom
- AI triggers deterrence spotlight, flashing red/blue lights and siren
- 24/7 Colour low light footage as low as 0.005lx
- IP67 rated, fully metal housing; PoE+ powered for easy install
- Requires 2 available channels when recording to an NVR

VSIPPTZ-4P8X  
(4.0MP + 8.0MP)



## Pro AI Series 4.0MP Compact PTZ Dome

- Only Ø168 x 171mm, compact size
- 25x optical zoom, 360° panning
- Stream up to 4.0MP at 25fps
- 5~125mm PTZ lens (53~3.3°)
- 6 x IR LEDs for 100m distance
- AI people & vehicle detection; AI auto-tracking people only
- IP66/IK10 rated; metal mount plate

VSIPPTZ-4IRC-1  
(4.0MP, 25x Zoom)



## Pro AI Series 4.0MP Mini PTZ Dome

- 4.0MP@25fps; 2.8~12mm (97~32°)
- 4x lossless optical zoom, 355° pan and -5~90° tilt
- AI people & vehicle detection
- Starlight; min. colour at 0.005lx
- 20m LED infrared, true WDR
- MicroSD, IK08/IP66 rated housing
- Mini dome only Ø128 x 65mm

VSIPPTZ-4IRM-I2  
(4.0MP PTZ)



## Pro AI Series 2.0MP Recessed PTZ Dome

- 32x optical zoom, endless 360° panning and 0°~90° tilt
- Ultra fast preset PTZ speeds
- 2.0MP at 50fps, 4.9~156mm lens
- AI face capture, people counting, person/vehicle detect & auto track
- MicroSD slot, H.265+, true WDR
- IK10 vandal resistant housing

VSIPPTZ-2C-1  
(2.0MP, 32x Zoom)



# Updated Pro AI Series PTZ with superior performance



## Pro AI Series PTZ Dome Cameras

- 25x and 32x optical zoom, endless 360° panning, -15°~90° tilt
- AI people & vehicle detection (tripwire and intrusion rules)
- Search playback by person and vehicle detection events
- AI PTZ auto tracking detects and tracks people & vehicles
- Stream up to 8.0MP at 25fps (4.0MP@25fps, 2.0MP@50fps)
- Starlight performance in low-light (colour 0.005lx@F1.35)
- LED infrared illumination system up to 150m IR distance
- 1/1 audio interface and 2/1 alarm interface (input/output)
- MicroSD slot, H.265+, true WDR (120dB), IP67 weather rated
- Incl. bracket for wall mount; ceiling drop mount sold separately

VSIPPTZ-2IRP-I2  
(2.0MP, 25x Zoom)

VSIPPTZ-4IRP-I2  
(4.0MP, 32x Zoom)

VSIPPTZ-8IRP-I2  
(8.0MP, 25x Zoom)



AI Auto Tracking



Starlight Camera



AI People & Vehicle Detection



Full HD  
1080

4.0  
MEGAPIXEL

4K  
ULTRA HD



AI Auto Tracking



Starlight Camera



AI People & Vehicle Detection

Full HD  
1080



## Pro AI Series 2.0MP Positioning Camera

- Endless 360° pan -90° ~ +90° tilt
- Stream Full HD 2.0MP@50fps
- 4.8 ~ 120mm lens (59.2~2.4°)
- Starlight; min. illumination 0.005lx,
- 150m distance LED infrared
- AI human/vehicle detection via motion & tripwire/intrusion rules
- AI auto tracking people & vehicles
- True WDR, audio/alarm I/O, IP67
- Junction box included, wall mount sold separately (VSBKTB730W)



VSIPPTZ-2IRW-I2  
(2.0MP PTZ)

VSBKTB730W  
(Wall mount)



AI Auto Tracking



AI People & Vehicle Detection



Starlight Camera

4K  
ULTRA HD



## Ultimate AI Series 8.0MP 40x PTZ Dome

- 8.0MP (3840 x 2160) at 25fps
- 40x optical zoom, endless 360° panning, -30°~90° tilt
- 500m long range LED infrared
- AI face capture & face recognition performed in-camera; AI people & vehicle detection & tracking
- Optical defog + smart IR/lens wiper
- Alarm, audio RS485, BNC out
- MicroSD slot, H.265+, true WDR (120dB), IP67 rated, HiPoE/36VDC PSU incl.



VSIPPTZ-8IRU-I2  
(8.0MP, 40x Zoom)



Professional IP Solutions

# Don't settle for underpowered 4G site surveillance



## Private pole quick-deploy CCTV

### 4G + Solar Standalone Camera Systems

- Add any 12V IP camera to private poles with our preconfigured kit that includes 12V power, storage and 4G connectivity\*
- Avail. in small size (fixed/VF dome) or large size (PTZ) models
- Standard 4.0MP Mini PTZ with infrared or choose from our wide range of IP cameras (180° dome shown above)
- 256GB surveillance grade microSD and industrial 4G router
- 12VDC 5A power supply, 10m lead, full pole mount kit

Add Cameras to Private Power Poles, Sheds, etc.



**For small camera applications:**

**VSIPKIT-1804G**  
(Incl. 180° Turret)

**For large camera applications:**

**VSIPKIT-P4G**  
(Incl. 4.0MP PTZ)

\*Storage MicroSD card included; 4G SIM card sold separately



## Rapid deployment for your site

### 4G + Solar Standalone Camera Systems

- Bring AI surveillance to areas without power or data access
- Available in 4.0MP bullet or 3.0MP Multi-Vision PTZ dome
- No NVR connectivity; completely managed via app only
- Always-On Video (AOV) provides continuous video recording at 1fps with low power consumption; AI wakes camera on event detection & boosts image capture to 15fps
- Integrated solar panel and 64Wh LiFePO4 battery
- Activates LED spotlight & siren in response to AI detection
- Includes 128GB microSD for 2 weeks of event recording\*
- White LED illumination on each model; IP67 weather rated



**VSIPSLR-B41**  
(4.0MP Bullet)

**VSIPSLR-3P3F**  
(3.0MP Fixed + 3.0MP PTZ)

\*Storage MicroSD card included; 4G SIM card sold separately



# Specialty IP surveillance for your next project



## The best in perimeter protection

### Hybrid Thermal Series Bullet & Turret Domes

- Thermal Series combines visible light & thermal imaging
- Features siren & white LED strobe for thermal event alerts
- Thermal intruder detection; fire and smoking detection
- Hybrid vision modes for thermal image information overlay
- 4.0MP visible light sensor with 4mm lens (71° view angle)
- Stream up to 4.0MP (2336 x 1752) at 25fps, 0.05lx low light
- 30m infrared range, microSD slot, alarm & audio interface
- Uncooled VOx thermal (256 x 192), 8~14μm wavelength
- 3.5mm fixed lens for thermal camera (50° view angle)
- Two-channels used for thermal and visible light channels
- Adjustable modes & alarm output for fire detection
- IP67 rated full-metal housing, power by PoE/12VDC

**VSIPTC-4DIRG (4.0MP Thermal Turret)**

**VSIPTC-4BIRG (4.0MP Thermal Bullet)**



## Superb ANPR for your next project

### Traffic Series Varifocal AI ANPR Bullet Cameras

- Capture number plates for vehicles going up to 80km/h\*
- Stream up to 4.0MP@25fps; superb low light at 0.002lx
- In 2.7 ~ 12mm lens (standard) or 8~32mm lens (long-range)
- 4 x infrared illuminators; in ANPR detection/video monitoring: 10m/30m (-I3 model), 30m/60m (-I3-Z model)
- Highlight compensation dampens headlight glare at night
- Edge enhancement for number plate detail and legibility
- White/blacklist control; automatically open gates via ANPR
- Export and share vehicle access reports via .CSV and email
- Red & blue flashing LEDs; siren for intrusion, loitering detect
- External alarm I/O and RCA audio output support
- IP67 weather rated housing; includes junction box

**VSIPTNP-4BIRM-I3**  
(2.7~12mm, 4.0MP)

**VSIPTNP-4BIRM-I3-Z**  
(8~32mm, 4.0MP)



Professional HDCVI Surveillance

# Upgrade existing coax installs to AI with Securview



## Compact Series AI HDCVI DVRs

- Face recognition up to 2 channels (via BNC only)
- AI person/vehicle detection via IVS (2CH) & SMD (8CH)
- Records 8.0MP@7fps, 5.0MP@12fps and 2.0MP@25fps
- Supports HDCVI, HDTVI, AHD, Analogue & IP inputs
- H.265 compression, HDMI/VGA, remote view

**CVR8COM3**  
(8CH, 1 HDD)

**CVR16COM3**  
(16CH, 1 HDD)



## Pro Series AI HDCVI DVRs

- Face recognition up to 2 channels (via BNC only)
- AI person/vehicle detection via IVS (2CH) & SMD (8CH)
- Records 8.0MP@7fps, 5.0MP@12fps and 2.0MP@25fps
- Supports HDCVI, HDTVI, AHD, Analogue & IP inputs
- Up to 2 x HDD bays (20TB total), H.265, alarm I/O

**CVR8PRO5**  
(8CH, 2 HDD)

**CVR16PRO5**  
(16CH, 2 HDD)



## Pro 2.0MP Fixed Lens HDCVI Cameras

- 2.0MP, 2.8mm lens (109°), 30m infrared illumination
- 0.001lx colour, true WDR, HDCVI/AHD/TVI/SD switchable
- Built-in microphone, 12VDC, IP67 weather rated

**VSCVI-2DIRG**  
(Turret)

**VSCVI-2BIRG**  
(Bullet)



## Pro 2.0MP Motorised VF HDCVI Cameras

- 2.0MP, 2.7~13.5mm (108° ~ 30°), up to 80m infrared
- 0.001lx colour, true WDR, HDCVI/AHD/TVI/SD switchable
- Built-in microphone, 12VDC/24VAC, IP67 (IK10 dome)

**VSCVI-2DIRMD**  
(Dome)

**VSCVI-2BIRMG**  
(Bullet)



# Cameras support dual power & interface with all coax DVRs



## Pro 5.0MP Fixed Lens HDCVI Cameras

- 5.0MP, 2.8mm lens (111°), up to 30m infrared
- 0.001lx colour, true WDR, HDCVI/AHD/TVI/SD
- Audio I/O, 12VDC, IP67 (IK10 dome)

VSCVI-5BIRG2  
(Bullet)

VSCVI-5DIR2.8D  
(Dome)

VSCVI-5DIRG2  
(Turret)



## Pro 5.0MP Motorised VF HDCVI Cameras

- 5.0MP, 2.7~13.5mm (113°~31°), up to 80m IR
- 0.001lx colour, true WDR, HDCVI/AHD/TVI/SD
- Audio I/O, 12VDC/24VAC, IP67 (IK10 dome)

VSCVI-5BIRMG2  
(Bullet)

VSCVI-5DIRMD  
(Dome)

VSCVI-5DIRMG2  
(Turret)



## Pro Series 8.0MP HDCVI Cameras

- 8.0MP, 2.8mm (111°), 3.7~11mm (112~46°)
- Huge 1/2" sensor, ultra low light 0.005lx
- True WDR (120dB), 2D/3D DNR, (PIR detect)
- HDCVI/AHD/TVI/SD switchable, IP67, 12VDC

VSCVI-8BIRG  
(Bullet)

VSCVI-8BIRP  
(PIR Bullet)

VSCVI-8DIRMG  
(VF Turret)



## Ultimate Series 8.0MP HDCVI Cameras

- 8.0MP, 3.7 ~ 11mm (112°~46°), auto iris
- 0.005lx, 50m/100m IR (dome/bullet), true WDR
- Audio/alarm I/O, HDCVI/SD, 12VDC/24VAC
- On-camera zoom adjustment, IP67 (IK10 dome)

VSCVI8MPFBIRM  
(Bullet)

VSCVI8MPVDIRM  
(Dome)



# ENSA™

Solar LED Lighting

## Power & Illuminate Your Next Install with ENSA™



### ENSA™

#### Solar Powered Lighting & Battery Systems

- Solar systems to power your next installation
- Pre-configured & ready for implementation
- Use for lighting, CCTV, WiFi, access & more
- High conversion rate monocrystalline panels
- Large capacity lithium batteries (LiFePO4)
- Fully adjustable LED lighting modules
- 180lm/W with microwave motion sensor
- Set parameters with included remote
- Optional bird spike strip included
- Ø50~60mm diameter pole mount



*Configure Use  
with Included  
Remote*



\*Pole/base not included with SSL-B units, sold separately

#### 56W Solar System

- 56W Monocrystalline Panel
- 218Wh LiFePO4 Battery
- 20W 180lm/W Area Light
- 145 x 75° Beam Angle
- 12.8VDC Output Voltage

SSL-B20MC

#### 80W Solar System

- 80W Monocrystalline Panel
- 320Wh LiFePO4 Battery
- 30W 180lm/W Area Light
- 145 x 75° Beam Angle
- 12.8VDC Output Voltage

SSL-B30MC

#### 120W Solar System

- 120W Monocrystalline Panel
- 500Wh LiFePO4 Battery
- 50W 180lm/W Area Light
- 145 x 100° Beam Angle
- 12.8VDC Output Voltage

SSL-B50MC

#### 180W Solar System

- 180W Monocrystalline Panel
- 1200Wh LiFePO4 Battery
- 60W 180lm/W Area Light
- 145 x 100° Beam Angle
- 25.6VDC Output Voltage

SSL-B60MC





Professional IP Solutions

# Professional AI Solar CCTV with 24/7 Recording



Complete  
site coverage  
with variety of  
models

Solutions for  
high power  
or multiple  
cameras



## Solar Powered CCTV Surveillance

- 120W & 180W Solar Systems + AI surveillance
- Fully configured and ready for installation
- Remote view via 4G\* or 5GHz wireless links
- 4.0MP IR PTZ included, other options available\*
- Surveillance grade microSD storage included
- 500Wh or 1200Wh high capacity batteries

\*SIM sold separately, camera changes may increase cost. Built pole & base delivery dependent on area, contact your sales rep for details.

SLR-B120-4G/4W      SLR-B180-4G/4W  
(120W Panel, 4G/WiFi)      (180W Panel, 4G/WiFi)



## Heavy Duty Octagonal Hinged Poles

- 4.0m & 6.0m octagonal galvanised steel hinged poles
- Street lights, CCTV surveillance and solar systems
- Ø60mm top diameter for light or panel mounting
- 1000kg concrete base optionally available
- Each pole includes 350 x 350mm template & J-bolts
- Request quote for delivery; pickup available

\*Cage not included

SLR-POL4-3  
(4m Pole)

SLR-POL6-2  
(6m Pole)

SLR-POLCONC3  
(1000kg Base)

Base supports 4m and  
6m hinged poles

# Secure your CCTV and alarm installs with SECCAB



*Fits up to  
2RU Sized  
NVR*



## SECCAB: The all-in-one vertical security cabinet for CCTV & alarms installations

- Lockable wall mounted storage of CCTV & alarm systems
- Fit up to 24" monitor, with 50/75/100 VESA mounts\*
- Capacity: 2RU, 240~480mm width, 465mm depth
- Integrated 4 x outlet powerboard & 2 x cabinet locks
- Cable management knockouts from all cabinet sides
- SPCC steel construction and white powder coating
- Suits vertical port input monitors (HDMI adapter available)
- USB fans included (monitor & NVR sold separately)

**SECCAB**  
(2RU Cabinet)



## FLASHVIEW™

### 4K HDMI Extender over CAT6 with KVM

- Transmit HDMI video/audio with USB keyboard/video/mouse
- Extend over distances up to 100m via CAT6 network cable
- Supports up to Ultra HD/4K resolution (3840 x 2160 pixels)
- Transmit HDMI signal over 60m via CAT6 (4K@60Hz HDCP2.2)
- Transmit HDMI signal over 100m via CAT6 (4K@30Hz HDCP1.4)
- KVM (keyboard-video-mouse) support via USB
- Infrared emitter and receiver for IR remote control use
- Includes 5VDC 1A power supplies for transmitter & receiver
- Ideal for extending CCTV video out, AV installations and more

**HDMI-XK**  
(Splitter & KVM)



# FLASHVIEW™

Visual Sensation Delivered

## Professional CCTV grade monitors and accessories

VESA Mounts  
2 x 1.5W Speakers  
Vertical Inputs



### FLASHVIEW™ Full HD CCTV Monitors

- Full HD 1080p (1920 x 1080)
- Made for 24/7 CCTV operation
- 1 x HDMI and 1 x VGA inputs
- VESA 75 (22") / 100 (24") mounts
- Vertical power/display inputs

LCDFL22G2  
(22" 1080p)

### FLASHVIEW™ 2-way 4K HDMI Splitter

- 1 x HDMI input, 2 x HDMI output
- Supports up to 4K Ultra HD & 3D
- Easy plug-and-play installation
- Includes 5VDC power supply

LCDFL24G2  
(24" 1080p)

### FLASHVIEW™ HDMI Extender Over CAT6

- Transmit HDMI via CAT6 up to 50m
- Supports up to Full HD 1080p & 3D
- Up to 225MHz/2.5Gps bandwidth
- Incl. 2 x 5VDC 1A PSUs

HDMI-EXT50M  
(HDMI over CAT6)

### FLASHVIEW™ 4K Copper/Fibre HDMI Cables

- 4K@60Hz, 18Gbps; also in easy-install cables



HDMI-1C (1m)  
HDMI-2C (2m)  
HDMI-5C (5m)  
HDMI-10C (10m)  
HDMI-10F (Fibre, 10m)  
HDMI-20F (Fibre, 20m)



HDMI-10FC (Fibre, 10m)  
HDMI-20FC (Fibre, 20m)  
HDMI-30FC (Fibre, 30m)  
HDMI-50FC (Fibre, 50m)

Easy-run  
HDMI  
Connector

### Wall and Ceiling Monitor Brackets



LCDBKT-A15F (13~30" Fixed Wall Mount)  
LCDBKT-A15T2 (13~30" Tilt Wall Mount)  
LCDBKT-A25T (17~42" Tilt & Swivel Wall Mount)  
LCDBKT-A50T2 (37~70" Television Wall Mount)  
LCDBKT-A35C (23 - 42" Tilt & Swivel Ceiling Mount)

# Build impressive video walls using up to 9 displays



## 4K Network Video Decoder 2 x HDMI

- Deploy spot monitors anywhere with network access
- Aggregate and display cameras across a network
- 2 x HDMI outputs and up to 36 display split per monitor
- Split screen control with zoom, merge, roam and overlay
- Switch between standard and high definition streams
- Decode up to 2CH 4K, 10CH 1080p or 32CH D1
- Support for audio and multi-video split display
- Manage via web browser or VIP Vision™ SmartPSS



NVD-A2  
(2x HDMI)



NVD-A6  
(6x HDMI)

NVD-B9  
(9 x HDMI)



## Large Network Video Decoders

- Network-roaming decoder displays all video feeds
- Video wall splicing for up to 36 channels per monitor
- Split screen control with zoom/merge/roam/overlay
- Support for audio, alarm, two-way talk, RS232, RS485
- Fisheye dewarp & multi-video split display
- Manage via web browser or VIP Vision™ SmartPSS
- **NVD-A6:** Decode 8CH 4K / 32CH 1080p / 128CH D1
- **NVD-A9:** Decode 12CH 4K / 48CH 1080p / 144CH D1



## Pro Network PTZ Keyboard

- RS232, RS485, USB, RJ45 connection
- Control PTZ and NVR/DVRs
- Joystick, 3.2" LCD, presets keyboard

VSIPTZKB3



## SECURVIEW

### LED Infrared Illuminators

- Flood light style illuminators, IP66 rated
- Models with beam angle & range:
- 11W: 30° (90m) / 60° (50m) / 120° (20m)
- 28W: 30° (170m) / 60° (100m) / 120° (50m)
- 60W: 30° (280m) / 60° (150m) / 120° (75m)

All wattages  
in 30/60/120°: VSIR11W VSIR28W VSIR60W





# Centrally managed systems with VIP Vision and DSS



## VIP Vision Security Management Centre

- Group, manage and display multiple security systems across multiple sites using the NVR-SMC1 management centre
- DSS GUI makes large system management simple
- Centralised CCTV, access control & intercom management
- Set different access rights hierarchies per user/group
- Pre-activated 256 video channels, cost effective licensing
- Manage building access w/ RFID tag & fingerprint scan
- Event & alarm logging, searching, timestamp & overlay
- Create impressive live video walls displays
- Intelligent functions + ANPR, AI & face recognition
- PTZ control/tour, fisheye dewarp, audio, alarm, etc.
- Manual and automatic system backup/restore
- Built-in 1TB HDD - supports 3x 2.5" HDDs for storage
- High reliability with hot standby & hot swapping HDDs

**NVR-SMC1**  
(Incl. 256 Video Channels)



## Manage combined systems:

UP TO **256**  
VIDEO CHANNELS

UP TO **1000**  
INTERCOM DEVICES

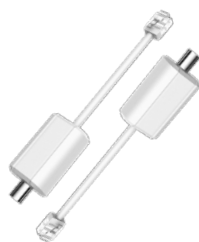
UP TO **64**  
CONTROLLED DOORS

\*Surveillance grade monitors sold separately to NVR-SMC1



## Ethernet over Coax Extenders

- Data/Power (via PoE switch) over coax
- 400m@100Mbps, 1000m@10Mbps\*
- Combine converter pair and transmitter/receiver; (\*RG59 coax)



Extend  
Up to  
1000m

**VSEOCPAIRV2**  
(Converter Pair)

**VSEOC-ATX**  
(Transmitter)

**VSEOC-ARX**  
(Receiver)



## High Fidelity CCTV Microphones

- 12VDC microphones for use with CCTV cameras
- Up to 150m² pickup range omni-directional
- Digital noise reduction and voice enhancement
- Available in plastic or aluminium alloy housing

**VSAMICA2**  
(Plastic)

**VSAMICB2**  
(Metal)



## CCTV & Alarm Warning Signs

- Quality corflute signs & stickers for visual deterrence
- Available in A3 (sign only) and A4 sizes
- VSCDSCS: Small stickers 100 x 130mm size

### Corflute Portrait Signs:

**VSA24** (A4 size)  
**VSA24A3** (A3 size)

### Warning Landscape Stickers:

**VSCDSC** (4 x A4 CCTV)  
**VSCDSA** (4 x A4 alarm)  
**VSCDSCS** (4 x Small CCTV)



Professional IP Solutions

# Make every install look great with our compact cabinets

4U/6U 300  
Depth and  
6U/9U 250  
Depth



## 19" Data Cabinets 300mm Depth

- 19" width, 4U/6U models, 300mm total depth
- Easy installation wall-mount bracket system
- Tempered swing glass door with cabinet lock
- Quick-removable cabinet side panels
- Includes earthing cable and cage nuts/washers
- Welded frame with powder coated finish
- Assembled for convenience & quick install

**RMC-B4U300W**  
(19", 4RU, 300mm)

**RMC-B6U300W**  
(19", 6RU, 300mm)



## 10" Comms Cabinets 250mm Depth

- 10" width, 6U/9U models, 250mm total depth
- Easy installation wall-mount bracket system
- Includes pre-fitted 135mm rackmount shelf
- Tempered swing glass door with cabinet lock
- Quick-removable cabinet side panels
- Includes earthing cable and cage nuts/washers
- Welded frame with powder coated finish
- Assembled for convenience & quick install

**RMC-B6U250W**  
(10", 6RU, 250mm)

**RMC-B9U250W**  
(10", 9RU, 250mm)



# Deliver a great result & save time on your next installation



## 19" Rackmount Data Cabinets

- In wall & floor mount designs
- 4RU to 18RU; 450mm & 600mm depths
- Lockable, 5mm tempered glass door, fixed shelf incl.\*
- Removable side panel; holes for cable management

### Pre-assembled Wall Mount Cabinets:

RMC-B4U450W2 (4RU 450mm)

RMC-B6U450W2 (6RU 450mm)

RMC-B6U600W2 (6RU 600mm)

RMC-B9U450W2 (9RU 450mm)

RMC-B9U600W2 (9RU 600mm)

RMC-B12U450W2 (12RU 450mm)

RMC-B12U600W2 (12RU 600mm)



*\*Fixed shelves included in some cabinets only*

RMC-B15U450W (15RU 450mm)

RMC-B15U600W (15RU 600mm)

RMC-B18U450W2 (18RU 450mm)

RMC-B18U600W2 (18RU 600mm)

**Need a bigger cabinet? Just ask your sales rep! We can special order cabinets up to 47RU size.**



### Cantilever / Rack Shelves:

RMC-BS250 (250mm)

RMC-BS350 (350mm)

RMC-BS450 (450mm)



### Power Rail & 24 Port Patch Panels:

RMC-PB8 (8 Port Power Rail)

RMC-PP24-5-T (CAT5 Patch Panel)

RMC-PP24-6-T (CAT6 Patch Panel)



### Fans & Cable Managers:

RMC-CM1 (Fascia Style)

RMC-CM2 (Clips Style)

RMC-FN2P-T (Fan 2-Pack)



Western Digital.

### Western Digital Purple HDDs

- Surveillance grade built for 24/7 use
- Available in capacities up to 20TB
- Up to 550TB/year workload rating
- 1.5M hrs MTBF, 3 year warranty

Ask us about our best deals on WD Purple HDDs



SEAGATE

### Seagate SkyHawk HDDs

- Surveillance grade built for 24/7 use
- Available in capacities up to 20TB
- Up to 550TB/year workload rating
- 1.5M hrs MTBF, 3 year warranty

Ask us about our best deals on Skyhawk HDDs



Western Digital.

### Surveillance MicroSD Cards

- Built for continuous data writing
- Ideal for edge recording applications
- Available in capacities up to 1TB
- Can be rewritten over 1000 times

Ask us about our best deals on WD microSD cards



Professional IP Solutions

# Scalable IP intercom solutions perfect for apartments



Connect up to 200 indoor monitors



Full HD 1080



## Apartment Series IP Door Station

- 1/2.9" 2.0MP camera with wide 158° view angle
- Dial to call each residence individually
- NFC card reader; access up to 10,000 cards
- Supports IP PoE or 2-wire installations
- Backlit interface & night-time white light
- Power over Ethernet (12VDC, 802.3af)
- IP55/IK08 weather & vandal resistant front plate
- Avail. with flush or surface box (sold separately)

INTIPADSD2 (Door Station)      Mounting Boxes  
INTIPADSDFB (Flush)  
INTIPADSDB2 (Surface)



## Multi-Button IP Intercom Door Station

- Configure door station to call monitor banks
- Call up to 10 monitors per button (40 total)
- 2.0MP wide camera (125°), NFC card unlock, PoE/12VDC, alarm I/O, RS485,
- Aluminium chassis, surface mount design
- IK08/IP65\* rated intercom door station
- Add door unlock module (INTIPDM) to control a second strike via intercom monitor

\*Weather rated as per standard install guide

INTIPDDS4W (4-Button)

Full HD 1080



## 7" Touchscreen IP PoE Indoor Intercom Monitors

- Compatible with all IP door stations

INTIPMONKW/B (White/Black)



# We can help pre-configure your large intercom project



## 2-Wire Plug & Play Residential Intercom Kit

- New hybrid intercom system for intercom upgrades using existing 2-wire infrastructure
- Plug and play intercom setup, zero configuration
- Up to 200m cable run from door station to monitor
- WiFi connection via network controller and intercom monitor enables app control and intercom call alerts
- **Kit includes:** 7" touchscreen indoor monitor, 2.0MP outdoor door station with surface mount box, 2-wire network controller to connect multiple devices

- **Door Station:** Auto IR illumination, SD card slot for video messages\*, IP65/IK07 aluminium construction
- **Indoor Monitor:** 7" touchscreen, WiFi for app control, 6 channel alarm input and 1 output, SD card slot\*

\*SD card sold separately, smartphone not incl.

INTKIT-H  
(2-Wire Kit)

INTRDS-H (Door Station)  
INTMON-H (White Monitor)  
INTCON-H (Controller)



## 2-Wire IP Residential Intercoms

Choose a 2-wire supported IP door station, then combine the 2-wire indoor monitor and 2-wire network controller for a complete IP intercom system with remote view over 2-wire cable.

- Upgrade existing intercoms using existing 2-wire cabling; Add remote view via phone app capability
- See door stations for 2-wire support

INTIPMON2W2  
(7" Monitor)

INTIPPOE2W2  
(Network Controller)



## 4-Wire Intercom Kit

Quick replacement for 4 & 6 core systems. Slim door station, monitor, 12VDC PSU; Add up to 3 monitors  
\*Local only, no remote view possible

INTKIT-A1  
(Monitor, door station, PSU)

INTKIT-A1-MON  
(Additional monitor)



Professional IP Solutions

# New PoE intercom kits to save you time and money



## Residential Complete IP Intercom Kit (J Series)

INTIPRKITJ2  
(Complete Kit)

- Surface mount intercom kit with door station, monitor & switch
- 1 x 1MP intercom door station
- 1 x 7" black indoor monitor
- 1 x 4-port 100M PoE switch
- Remote view via devices/app

Switch to white monitor at no extra charge



## Residential Complete IP Intercom Kit (G Series)

- Surface mount intercom kit with door station, monitor & switch
- 1 x 2MP intercom door station
- 1 x 7" white indoor monitor
- 1 x 4-port 100M PoE switch

INTIPRKITG-P  
(Complete Kit)



## Door Unlock Module

- Unlock a 2nd door via RS485  
\*Cannot trigger independently

INTIPDM  
(Expander)



# Single residence IP door stations call up to 10 monitors



## G Series Door Station

- 2.0MP wide angle camera (160°)
- Supports IP PoE or 2-wire installs
- 12VDC / PoE, alarm I/O, RS485
- Flush or surface mount (incl. surface),
- IP65 (as per standard install guide)

INTIPRDSG3 (2.0MP)  
INTIPRDSGSB2 (Surface)  
INTIPRDSGFB (Flush)



## J Series Door Station

- 1.0MP wide angle camera (122°)
- Supports IP installations only
- 12VDC / PoE, alarm I/O, RS485,
- NFC card reader to control access
- Surface mount installation
- IP65 (as per standard install guide)

INTIPRDSJ  
(1.0MP)



## D Series Door Station

- 2.0MP wide angle camera (158°)
- Supports IP PoE or 2-wire installs
- 12VDC / PoE, alarm I/O, RS485,
- NFC card reader to control access;
- configure code unlock via keypad
- IP65 (as per standard install guide)

INTIPRDS2 (Door Station)  
INTIPADSDFB (Flush)  
INTIPADS2SB2 (Surface)



## IP PoE Indoor Monitors

7" touchscreen (1024 x 600), PoE / 12VDC, microSD storage (inside unit, sold separately), alarm integration, flush wall bracket included

INTIPMONKW(White)  
INTIPMONKB (Black)



## IP PoE Handset Monitors

7" touchscreen (1024 x 600), wall or desktop mount, PoE / 12VDC, microSD storage, flush wall bracket included

INTIPMONDWH2 (White)  
INTIPMONDBH2 (Black)  
INTIPMON-BKT (Desk Mount)



## Residential & Apartment IP Monitor

7" TFT capacitive touchscreen (800 x 480 pixels), add microSD card for up to 32GB storage, record / snapshot video calls/messages; DND

INTIPMON  
(White)



Professional IP Solutions

# Flexible, browser based access control systems



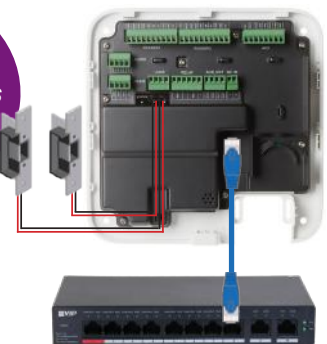
## Professional Web Access Control Systems

- Network-based access control management via your web browser
- Real-time monitoring of status, events and remote door control
- 2 doors per web controller; up to 40 doors total (20 controllers)
- PoE powered controller with 12V output to power strikes & readers
- Controller supports 2 door sensors, 2 exit buttons, 2 alarm outputs
- Lockable controller cabinet for power backup and electrical protection
- Lift controller integration available by request for your next project

**AC-WCM**  
(2-Door Controller)

**AC-WSB**  
(Controller Cabinet)

*PoE Controller  
powers readers  
and strikes*



## Access Control Readers

- 3 styles in card (-C) or card+keypad (-CK)
- Slim1 style includes Bluetooth (-CB) reader for phone unlock via application
- LED indicators and backlit buttons, tamper & overvoltage/current protection
- Mifare NFC card readers (13.56MHz)
- IP66 weather rated readers (with recommended installation guidelines)



**Square Style**  
**AC-WRA-C**  
**AC-WRA-CK**

**Slim1 Style**  
**AC-WRB-C**  
**AC-WRB-CK**  
**AC-WRB-CB**

**Slim2 Style**  
**AC-WRC-C**  
**AC-WRC-CK**



# Watchguard access: Perfect for standalone installations



## Standalone Access Control Systems

- 125KHz card & code access, setup via reader
- Door chime relay, tamper switch & vandal lockout
- Data I/O bus for multi-station systems
- Add up to 3 x slave ACRDR100 access readers
- Add split decoded controllers for additional security
- Units include 2 x access control key cards; 12VDC

## Split-Decoder for Standalone Systems

- Splits unlock signal from reader, prevents sabotage
- Terminals for alarm integration, 3 output relays
- Connect up to 3 keypads/readers; incl: 2 x keyfobs
- Power input: 12~24VDC auto-adjusting



ACRDR100  
(IP55 rated)



ACRDR102  
(IP55 rated)



ACRDR103  
(IP65 rated)



ACRDR101  
(incl. 2 keyfobs)

\*125KHz cards  
also available



## Electric Strikes and Electromagnetic Door Locks

\*MAGLOC brackets also available



Steel body,  
mortise-mount,  
fail-secure,  
12VDC

ACLOC100



Steel body,  
surface-mount,  
fail-secure,  
12VDC

ACLOC101



Chrome body,  
surface-mount,  
fail-secure,  
12VDC

ACLOC104



Stainless steel,  
mortise, fail-  
safe/secure,  
monitored,  
12VDC

ACLOC102



Stainless steel,  
mortise, fail-  
safe/secure,  
monitored,  
12/24V AC/DC

ACLOC105



Aluminium-zinc,  
surface-mount,  
fail-safe, 270kg  
holding force,  
12V/24VDC

MAGLOC100S



Aluminium-zinc,  
mortise-mount,  
fail-safe, 270kg  
holding force,  
12V/24VDC

MAGLOC100M



ACDSW100



ACDSW101



ACDSW102



## Door Release Switches

- Door releases, 500,000 MTBF
- **ACDSW100:** Heavy duty, sandblasted aluminium, 3 outputs (N.O, N.C, COM)
- **ACDSW101:** Slim, stainless steel, 2 outputs (N.O, COM)
- **ACDSW102:** Touch button, aluminium, 3 output (N.O, N.C, COM), red/green status LEDs, adjustable output timer 1~40s



13.56  
MHz



## 13.56MHz RFID Card/Keyfobs

For VIP Vision Access Control systems  
Mifare NFC chip, read-only memory

ACKEY103  
(Card, 1pc)

ACKEY104M-2  
(Keyfob, 1pc)

# Connect and power your installations with VIP Vision



*Fast  
Device Ports  
(-SWA)*

*Gigabit  
Device Ports  
(-SWB)*



## Unmanaged Desktop PoE+ Switches

- 4 and 8 port switches with 100M or 1000M device ports
- 2 x Gigabit 1000M RJ-45 uplink ports (\*100M -SWA4U)

- Unmanaged PoE switches for plug and play operation
- Up to 30W per port PoE, total of 60W(4 port)/90W (8 port)
- Extend mode: run 250m via CAT5e/6 at 10Mbps bandwidth

**VSPOE-SWA4U**  
(100M, 4 port)

**VSPOE-SWA8U**  
(100M, 8 port)

**VSPOE-SWB4U**  
(1000M, 4 port)

**VSPOE-SWB8U**  
(1000M, 8 port)



## L2 Managed Rackmount Hi-PoE Switches

- 16 and 24 port switches with 100M or 1000M device ports
- 2 x Gigabit 1000Mbps Base-T (RJ-45) uplink ports
- 2 x Gigabit SFP Base-X uplinks for use mini GBIC modules
- L2 Managed switch for security & switch customisation
- 30W PoE+ per port with 2 x 90W red IEEE802.3bt ports
- Total PoE load up to 240W (16 ports) or 375W (24 ports)

- PoE Watchdog monitors port status and can perform restarts automatically to improve IP camera uptime
- Extend mode: run 250m via CAT5e/6 at 10Mbps bandwidth (via easy DIP switches on 24 port models)
- Easily switch between managed & unmanaged modes
- Includes rackmount tabs for cabinet mounting

**VSPOE-SWA16C**  
(100M, 16 port)

**VSPOE-SWA24C2**  
(100M, 24 port)

**VSPOE-SWB16C**  
(1000M, 16 port)

**VSPOE-SWB24C2**  
(1000M, 24 port)



# PoE switches & accessories in 100M fast & 1000M gigabit



## Fast Hi-PoE Switches

- 4 & 8 port fast switches 100M
- Supports DIN rail mounting
- 1000M RJ45 & SFP uplinks
- 30W load per port (60W HiPoE)
- Total 60W (-4H) / 96W (-8H)
- -30°~65°C operating temp.



VSPOE-SW4H (4 Port) VSPOE-SW8H (8 Port)



## Fast Hi-PoE Desktop Switches

- 100M desktop switches with HiPoE in 4 and 8 ports
- 2 x Gigabit 1000M RJ-45 uplink ports across range
- 30W per port (60W HiPoE); total 60W (-4C), 110W (-8C)



Extend up to 250m at 10Mbps

VSPOE-SWA4C (4 Port) VSPOE-SWA8C (8 Port)



## Gigabit Hi-PoE Switch

Desktop PoE switch, 1000M gigabit PoE ports, 30W per port & 1 x HiPoE port, 96W total

VSPOE-SWB8G (8 Port, 96W)



## Gigabit Fibre PoE Switch

4 x 1000M gigabit PoE ports, 4 x SFP fibre ports, 1000M uplink port, 30W per port & 1 x HiPoE port 90W

VSETH-SW9GF2 (9 Port, 120W, SFP)



## Mini GBIC Fibre Adapters

LC connector single mode & multi-mode fibre adapters for use with switch SFP ports, supports OM1/2/3/4 (-MM1); SMF (-SM1)

SFPMM1 (Multi-mode):  
SFPSM1 (Single-mode):



## Extended PoE Switch

- Extends PoE up to 800m to supported ePoE cameras
- Extends to 300m@100Mbps and up to 800m at 10Mbps
- Total PoE load up to 120W
- 8 x 100M PoE device ports
- 30W/port, 2 x 60W HiPoE
- RJ45 & SFP 1000M uplinks
- DIN rail mountable
- -30°~65°C operating temp.



VSPOE-SW8E (8 port, ePoE)



## PoE Midspan, Injector & Extender

**PoE Midspan & Extender:** 60W midspan, Delivers PoE to IP cameras up to 300m (<8W per cam) via 3 x PoE extenders

**PoE Injector:** 30W PoE+, 1000Mbps, 240VAC

VSPOE-IN30 (Injector) VSPOE-MS (Midspan) VSPOE-EX (Extender)

## 5G/4G networking solutions for your off-grid install



### 4G Wireless Router with Battery Backup

- 4G LTE: 150/50Mbps down/up
- Broad 4G band support, nano SIM card sold separately
- 1 x Fast (100M) LAN/WAN port
- 2.4GHz WiFi 6 up to 574Mbps
- 2x2 MIMO 2.4GHz antennas
- 2600mAh router backup battery
- Includes LTE antennas

RTR-ZS (SIM sold separately)



### 4G Commercial Dual Band Wireless Router

- 4G LTE: 300/50Mbps down/up
- Broad 4G band support, nano SIM card sold separately
- 4 x Gigabit (1000M) LAN ports
- 2.4/5GHz WiFi 5 up to 1167Mbps
- 2x2 MIMO WiFi antennas
- 2 x SMA antenna input; external antennas sold separately

RTR-ZM (SIM sold separately)



### 5G/4G Pro Dual Band Wireless Router

- 5G: 3800/900Mbps down/up
- 4G LTE: 300/50Mbps down/up
- Broad 5G/4G band support, nano SIM card sold separately
- 2 x Gigabit (1000M) LAN ports
- 2.4/5GHz WiFi 6 up to 2882Mbps
- 2x2 MIMO WiFi antennas
- Snapdragon X62 chipset

RTR-ZL (SIM sold separately)



### Industrial 4G/WiFi Modem Router

- 4G/LTE (Cat 4) support with mini-SIM tray (2FF)
- 2 x 100M Ethernet ports (1 x LAN, 1 x LAN/WAN)
- Antennas: 2 x SMA 4G input, RP-SMA WiFi input
- -40~75°C operating temperature, 9~30VDC
- Supports DIN rail mounting
- SIM card and eSIM sold separately

RUT241



# WiFi & Ethernet accessories to integrate with surveillance



## 5 Port Gigabit Switch

- 1000M gigabit Ethernet switch
- Unmanged switch plug & play
- 5VDC, -10~50°C working temp.

VSETH-SW5G2  
(5 port)



## 16 and 24 Port Gigabit Ethernet Switches

- 1000M gigabit Ethernet switches in professional full metal enclosure
- Unmanged switch, overvoltage protection up to 6kV
- 100~24VAC, includes rackmount tabs for cabinet mounting

VSETH-SW16G2  
(16 port)

VSETH-SW24G2  
(24 port)



## Indoor Wireless APs

- 2.4/5GHz dual band access points
- Throughput up to 600/2400Mbps (2.4/5GHz)
- Gigabit uplink port (Pro: 2 x GBe uplink)
- **Plus:** 140m<sup>2</sup>, WiFi 6, PoE, 2x2 MIMO
- **Pro:** 122m<sup>2</sup>, WiFi 5, PoE / PoE+, 3x3 MIMO
- **LR:** 162m<sup>2</sup>, WiFi 7, PoE, 3x3 MIMO
- PoE injector / PoE switch are sold separately
- Variety of other indoor access points available for special order, subject to availability



WT5-U6P (Plus)



WT5-UAPACPROV2 (Pro)



WT5-U7LR (Long Range)



## Outdoor Wireless AP

- 2.4/5GHz (573Mbps/4800Mbps)
- Gigabit uplink port, PoE powered
- Create mesh with multiple units
- **Bracket:** Also supports WT5-ULB

WT5-UAPU6MESH (AP)  
UB-AM (Bracket)



## 5GHz Wireless Links

- 5GHz point to point links
- 2x2 MIMO technology
- 120°, 25dBm, 1000M

WT5-ULB (Litebeam)  
WT5-ULB-PACKA (2pc PtP)  
WT5-ULB-PACKB (3pc PtMP)



## PowerBeam AC Antenna

- Mechanical ±20° up/down tilt
- 5GHz, 25dBi gain, up to 450Mbps
- Range >25km in ideal conditions
- Includes radome shield

WT5-UPBAC52  
(5.8GHz, 25dBi)

# SECURVIEW

Professional Vehicle Surveillance

## New Hybrid HDCVI Mobile DVRs for Vehicle CCTV

Full HD  
1080



Supports  
HDCVI and  
analogue  
cameras



### Professional Mobile Surveillance with GPS, 4G and WiFi

- Robust chassis mobile HDCVI DVRs with included GPS, 4G and WiFi modules
- Supports HDCVI (and TVI, AHD) and analogue cameras via 4-pin M12 aviation connectors
- Mobile PoE switch & cables required for up to 4 channels IP camera support, sold separately
- 4G modem for remote view (SIM sold separately) and 2.4GHz WiFi module for remote access
- Precision GPS (GPS/GLONASS) module with GPS coordinates overlay, includes external antenna



#### 4CH Mobile Series HDCVI DVR

- Records 4 x HDCVI/analogue channels at 2.0MP@25fps
- 1 x 2.5" SATA HDD/SSD bay & 256GB SD card storage
- VGA (M16, 10-pin) & composite (M12, 4-pin) display out
- 6~36VDC, audio, alarm, RS485 and RS232 inputs
- Single DIN, vibration-dampening chassis

##### Mobile DVRs

MXVR-GPS4GW (4CH, 1HDD)  
MXVR-GPS8GW (8CH, 2HDD)



#### 8CH Mobile Series HDCVI DVR

- Records 8 x HDCVI/analogue channels at 2.0MP@25fps
- 2 x 2.5" SATA HDD/SSD bay & 256GB SD card storage
- VGA (M16, 10-pin) & composite (M12, 4-pin) display out
- 6~36VDC, audio, alarm, RS485 and RS232 inputs
- Single DIN, vibration-dampening chassis

##### M12 Camera Leads

MCVR-CABLE3M (3m)  
MCVR-CABLE6M (6m)

MCVR-CABLE12M (12m)

MCVR-CABLE18M (18m)

MCVR-VGACABLE3M (0.3m, VGA)



# Securview mobile CCTV for your next vehicle installation



## Mini Dome Camera

- Stream 2.0MP (1920x1080)
- 2.8mm lens (H: 101° view)
- Built-in mic & 20m infrared
- IP67 rated metal body
- Auto day/night (IR cut filter)
- Heavy duty M12 connector

VSCVIM-2DIR  
(Mini Dome)



## Bumper Camera

- Stream 2.0MP (1920x1080)
- 2.8mm lens (H: 106° view)
- Built-in mic & 20m infrared
- IP67 rated metal body
- Auto day/night (IR cut filter)
- Heavy duty M12 connector

VSCVIM-2CIR  
(Bumper)



## Twin Dash Camera

- Stream 2.0MP@25fps
- Rear:** 2.1mm (164° view)
- Front:** 2.8mm (127° view)
- Built-in mic & 3m infrared
- Auto day/night (electronic)
- Adhesive adjustable mount

VSCVIM-2TT  
(Dash Cam)



## Bumper Bullet

- Stream 2.0MP (1920x1080)
- 2.8mm lens (H: 106° view)
- Built-in mic & 20m infrared
- IP67 rated metal body
- Auto day/night (IR cut filter)
- Heavy duty M12 connector

VSCVIM-2BT  
(Bumper Bullet)



7SD3

Wide input support for mobile or desktop devices



10FHD



10SD3

SECURVIEW

## 7" and 10" LCD Vehicle Monitors

- Avail in 7" and 10" models
- 12VDC input, incl. brackets
- HDMI / VGA / AV / BNC\* (\*excludes LCD7SD3)

LCD7SD3 (7" 480p)

LCD10SD3 (10" 720p)

LCD10FHD (10" 1080p)



## Mobile Wedge Dome

- 2.0MP@25fps, 2.8mm (111°)
- 20m IR, 0.005lx low light
- Auto day/night (IR cut)
- IP67 / IK10, M12 connector
- Optional shield bracket



Full HD  
1080

VSCV12MPVDIRFTV3  
(Vandal Dome)

VSBKTA201W (Shield)



## 1TB Capacity 2.5" SSD for Mobile DVRs

- 2.5" suits DVRs
- SATA 3.0 speeds
- 550MB/s, 500MB/s read/write

SSD1TB2.5  
(1TB)



Professional Vehicle Security

# Wide range of mobile safety and security for vehicle installs



**Auto-Arm  
2-point Cut  
Valet Mode**



## Advanced Car Alarm & Immobiliser

- Top quality Australian Standards Approved car alarm
- Door, bonnet and boot protection
- Integrated central locking relays, keyless entry
- 1 x AU standards approved 3-point immobiliser
- 2 x Water resistant rolling code keyfobs
- 1 x Mini coded backup battery siren
- 1 x Intelligent glass break sensor

RAV3



## Two-point Keypad Immobiliser

- 70% of vehicle thefts are due to stolen keys
- Code must be entered before ignition
- 3min lock after 3 incorrect attempts
- Vehicle protection against key theft
- Automatic arm; less disruption to normal use
- High security all-black wiring harness
- Valet mode: temporary auto arming bypass

IM007



## Heavy Duty Central Locking Kits & Door Motors

- Superior quality central locking kits, in 2 door and 4 door kits
- High torque motors ideal for use with rigid door locking mechanisms
- Individual door locking motors & cable lock adapters available

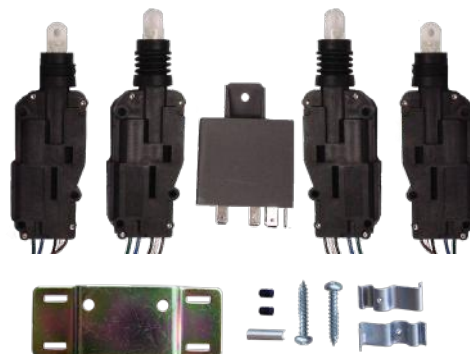
CLKHD  
(4-door kit)

CLKHD2D  
(2-door kit)

DLHD101  
(Master motor)

DLHD102  
(Slave motor)

CLKHDCABLE  
(Lock adapter)





# Mobile safety, GPS tracking, vehicle cameras & accessories



## 4G GPS Vehicle Tracker

- GPS and 4G\* / GSM antennas
- for 11 ~ 36VDC vehicles
- Real-time speed & location tracking
- <200g lightweight, 105 x 65mm
- Online platform management including historical reports, visit [www.rhinotracks.com.au](http://www.rhinotracks.com.au)



**RHINOTRACKS-ST5**  
(\*SIM not incl.)

Full HD  
**1080**



## 1080p Dash Cam (16GB)

- 3" LCD, 1080p camera with WDR
- LED light, time/date/number plate footage overlay, incl. mount bracket, charge cables, 16GB microSD



**MDVR-HDV7**



## 2.4GHz Reverse Kit

- Connects in seconds,
- 12m transmission distance
- 7" LCD, 2 AV channels
- 420TVL 2.8mm lens (120°)
- 30m infrared, IP67 rated
- 12V/24VDC, incl. remote

**MSKIT-WRC**



## Reversing Sensor Kit

- Four sensor reverse kit
- 40KHz ultrasonic sensors
- 2.5m detect distance
- Includes siren, sensors, control box and hole saw
- 12VDC 20~200mA

**MSKIT-RV4**



## 4.3"/7.0" LCD Monitors

- 4.3" (flip up display) & 7.0" (incl. stand), 480 x 234 (16:9)
- Triggered on reverse
- 2/4 video inputs (4.3"/7.0")
- Includes mounting kits
- 12VDC power input

**MSMON-4 (4.3")**  
**MSMON-7 (7.0")**



## Relays & Pin Switches

- 40A, 12VDC, 5 pin relay
- PINSW: metal pin switch, 5 x 65mm, screw adjust
- 409: 35x53mm straight
- 410: 45x60mm right angle

**40ARELAY (Relay)**  
**PINSW (Metal)**  
**PIN409 (Straight)**  
**PIN410 (Right angle)**



## Vehicle safety and reversing assist cameras



Bracket/  
flush (18mm),  
400TVL, IP67



Flush (18mm),  
420TVL, 5m IR,  
IP67



Bracket (28mm),  
420TVL, 5m IR,  
IP67



Screw mount  
(28mm),  
420TVL, IP67



Number Plate  
camera, 420TVL,  
5m IR, IP67



Bumper mount,  
420TVL, 5m IR,  
IP68



Mini dome  
mount, 420TVL,  
5m IR, IP67



Mini dome with  
audio, 420TVL,  
5m IR, IP67

**MSCAM-B18**

**MSCAM-FI18**

**MSCAM-BI28**

**MSCAM-S28**

**MSCAM-NPI**

**MSCAM-TI**

**MSCAM-MD**

**MSCAM-MDA**

Compatible for use with HDCVI mobile DVRs (requires connector change to M12 aviation connector).



# AVOL

Professional Installation Supplies

## Best value deals on essential AVOL data cabling



### Data Cable 305m Pullboxes

- 305m unterminated network cable
- Supports Power over Ethernet
- ACMA approved
- 100% bare copper conductor
- Easy-pull with plastic reel
- Available in various colours (while stocks last)

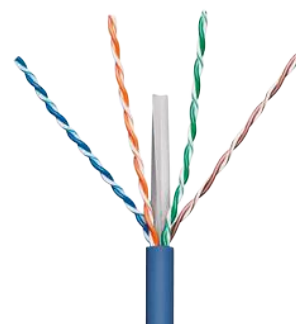
CAT5e 305m  
Pullboxes From

CAT6 305m  
Pullboxes From

Price subject to change - Ask us  
about our best deals on data cable



**Modular RJ45 Plugs**  
RJ45PLUG-C5 (CAT5)  
RJ45PLUG-C6 (CAT6)



### SECURVIEW

### CAT5/6 Pre-terminated Leads

- CAT5E and CAT6 patch leads in variety of colours
- Ask us about custom colour leads in CAT5 or CAT6
- Also available in ultra-thin CAT6A varieties

**CAT5E Leads (Blue)**  
NETCABLE20-Z (20m)  
NETCABLE30-Z (30m)

**CAT6 Patch Leads (Various Colours)**  
NETCABLE025X6 (0.25m)  
NETCABLE050X6 (0.50m)





# Cable rolls for alarm, CCTV and access control installs



**Watchguard**

## 100m 4-Core and 6-Core Alarm Cable

7 / 0.20mm

D4CC (4-Core)

D6CC (6-Core)

14 / 0.20mm

D4CC2 (4-Core)

D6CC2 (6-Core)



**Watchguard**

## 100m Figure 8 Cable Rolls

White, blue or red/black

DF8C (14/0.20, white)

DF8C2 (24/0.20, blue)

DF8C4RB (24/0.20, R/B)

DF8C4W (24/0.20, W)

DF8C3 (48/0.20, R/B)



**SECURVIEW**

## 100m Power/Coax Cable

- 100% copper conductor; 95% braiding; 75Ω RG59 coax cable
- 24/0.20mm figure 8 cable

DCOAXPWR24FCBP  
(100m roll)



**SECURVIEW**

## 200m 6-Core Access Cable

- Shielded cable for access control
- 6-core 7/0.20mm, tinned copper
- Aluminium foil shielded, grey PVC

AC200G  
(200m roll)



**SECURVIEW**

## 200m 4-in-1 Access Cable

- 6-core 7/0.2mm shielded cable, 24/0.2mm figure 8, 14/0.2mm 4-core and 6-core all-in-one spool

APAC200G  
(200m roll)



**SECURVIEW**

## 100m RG59 Coax Cable

- Solid copper core with 98% braid shield and solid PE dielectric

DCOAXFC  
(100m)



**SECURVIEW**

## 20m Power and 4K BNC Video Lead

- Preterminated; for HDCVI CCTV
- Unable to be daisy-chained

VIDPWR20RG59  
(20m)



**SECURVIEW**

## 30m Power and 4K BNC Video Lead

- Preterminated; for HDCVI CCTV
- Combine 2pcs for 60m@4K

VIDPWR30RG59  
(30m)



Alarms & Surveillance

# Hardwired business security systems up to 64 Zones



## Complete Hardwired WGAP864 Alarm System

- 8 zone expandable up to 64 zones
- 8 partitions, up to 5 programmable outputs (expandable up to 25)
- Dedicated panic zone
- Monitored siren output
- Kit includes 864 panel, choice of white/black keypad, 12V7A backup battery, 3 x dual-tech PIRs, 2 x reed switches, outdoor siren/strobe, indoor piezo siren, 24VDC PSU
- Expand for more zones, app control, wireless TX/RX & more



**WGAP864PACK**  
(8 Zone Alarm Kit)

**WGAP864PW2**  
(Panel + White Keypad):  
**WGAP864KPW/B**  
(White or Black Keypad):

**WGAP864EXP816** (8 zone expander, 8-16)  
**WGAP864EXP1664** (8 zone expander, 16+)  
**WGAP864WRX2** (2CH wireless RX & keyfobs)  
**WGAP864WRX16V2** (16CH wireless RX)



## Wi-Fi / IP Module for 864

- 864 alarm control via HYYP app
- Support RJ45 or WiFi connection
- Arm, disarm, trigger outputs & more

**WGAP864IPMW**  
(Phone not incl.)



## Hardwired Siren and Strobes

- **W24SIREN**: Euro-style siren, 115dB piezo siren, blue strobe, tamper
- **COS**: Complete outdoor siren, AC/DC 115dB siren, tamper, strobe
- **WGSIR-500**: Polycarbonate, battery backup, 120dB, tamper, strobe, IP55 rated
- **WGSIR-900**: Polycarbonate, battery backup, 120dB, tamper, strobe, IP54 rated

**W24SIREN**

**COS**

**WGSIR-500**

**WGSIR-900**

\*Internal sirens also available (flush & surface)



# Wide range of hardwired sensors to support your install



## TAKEX

### Wide Angle & Curtain PIRs

- PIR detectors, 11m range, 84° beam
- Pet immune: Immune up to 20kg
- Curtain: Vertical beam up to 16.5m

PIR-T45WP (Pet Immune)

PIR-T46C (Curtain PIR)

PIR-T4BKT (Bracket)



## Honeywell <sup>PSA</sup>

### Smoke Detectors

- Photoelectric, 9V backup, NO/NC
- Interconnects up to 24 smoke alarms
- Certified to AS3786:2014 standard

SMODET4-N (4-Wire)

#### Standalone Models

SMODET240V (Mains Power)

SMODET9V1 (Wireless)



## Watchguard™

### Heavy Duty Reed Switches

- Heavy duty, install with up to 50mm gap, NC reed switch output, 10W rated, 250mm leads, zinc alloy
- 106 x 16 x 16mm dimensions

RSW-M1 (Grey)

RSW-M1W (White)

RSW-M1B (Brown)



## Watchguard™ Hardwired PIR Detectors

- PIRHDWT2: 15m PIR sensor, dual pyro, tamper, N.C, incl. brackets
- ALH-PIRMW: 15m PIR/microwave sensor, N.C, tamper, wall mount
- ALH-PIRGS: 15m PIR+glass/shock sensor, N.C, 10m glass break dist.
- ALH-PIR360: 360° N.C/N.O PIR sensor, Ø8m range (at 4.5m height)

PIRHDWT2

ALH-PIRMW

ALH-PIRGS

ALH-PIR360

## Watchguard™ Hardwired Reed Switches and Accessories



N.C reed switch, 19mm gap, also in grey or brown

RSW-P1 (White)

Compact white N.C wired reed switch

DSRLW

Large ROLA style N.C wired reed switch

DSRHDW2

Concealed N.C/ N.O wired reed switch (white)

DCRW

Heavy duty roller shutter door N.C wired reed switch

DRSR

Supervised wireless reed switch for 864 panel, 100m LoS

WGAP864WDCV2

Door loops, stainless steel tube, metal box or plastic clip

DLW (plastic)  
DLB (metal)

# Wireless alarms that interface with your CCTV installation



*Integrate alarm system with CCTV video link*



## Watchguard D1 Series 4G / WiFi Alarm System

- Supports up to 150 wireless peripherals (6 sirens, 64 keyfobs)
  - WiFi (2.4GHz) and 4G connectivity for app control & alerts
  - 433MHz, code hopping, AES128 encrypted wireless tx
  - Utilise app to arm/disarm, monitor & check battery status
  - Calls and/or SMS up to 5 phone numbers on alarms
  - Built-in lithium battery up to 12hrs standby uptime
  - Wide range of additional accessories sold separately
- \*SIM card sold separately



ALMKIT-D1  
(Alarm kit)

**Kit includes:**  
Alarm hub, PIR, reed switch & keyfob



## Wireless Accessories for Watchguard D1 Series 4G/WiFi Alarm System

- Remote Control Keyfob (-RC), Panic Button (-PNB), Smoke Alarm (-SMK), Door & Window Sensor (-RSW)
- Outdoor Strobe & Siren (-SRX), PIR Detector (-PIR), Wireless Control Keypad (-KPD), Indoor Siren (-SIR)

ALM-D1-RC ALM-D1-PNB ALM-D1-SMK ALM-D1-RSW ALM-D1-SRX ALM-D1-PIR ALM-D1-KPD ALM-D1-SIR



# Prevent footage loss and protect equipment



## PE Series Tower UPS - Step Wave

- Line interactive uninterruptible power supply
- Step wave, standard AU sockets, LED or LCD display
- Auto-voltage regulation, RJ45 over-voltage protection

UPS650VA (360W, 2 inputs, 28min@72W)

UPS850VA (480W, 2 inputs, 26min@95W)

UPS1000VA (600W, 4 inputs, LCD, 44min@120W)

UPS1500VA (900W, 4 inputs, LCD, 32min@180W)

UPS2000VA (1200W, 4 inputs, LCD, 24min@240W)



## PR Series Tower UPS - Sine Wave

- Pure sine waveform for greater stability and compatibility
- Connect devices easily via IEC320 sockets
- AVR stabilises output voltage
- RJ45 protection against line overvoltage for LAN/ADSL

UPS1000VA-S (1000W, 4 inputs, LCD, 44min@120W)

UPS1500VA-S (1500W, 4 inputs, LCD, 32min@180W)

UPS2000VA-S (2000W, 4 inputs, LCD, 24min@240W)



**Add Battery  
Pack to Extend  
Uptime**



## PR Series Rackmount UPS - Sine Wave

- Line interactive uninterruptible power supply (2U size)
- Pure sinewave for greater stability & device compatibility
- IEC sockets (up to 8 x 10A, 1 x 16A), LCD info display
- Auto-voltage regulation, RJ45 over-voltage protection

UPS1700VAXCRM (1350W, 8 input, 30min@270W)

UPS2200VAXCRM (1800W, 8 input, 47min@360W)

UPS3300VAXCRM (2700W, 9 input, 31min@540W)



**Only 330mm  
Depth - Fits in  
450mm Deep  
19" Racks**



## Compact Rackmount UPS - Sine Wave

- Online UPS for zero-delay power supply switching (2U)
- Pure sinewave for greater stability & device compatibility
- IEC sockets (up to 6 x 10A, LCD info display)
- Auto-voltage regulation, RJ45 over-voltage protection
- USB port & HID protocol interfacing with Windows PCs
- RS232 for PSU management & local/remote shutdown

UPS1100VA-ORM (900W, 6 input, 32min@180W)





# AVOL

Professional Electrical Supplies

## AVOL Genius Solar and Battery Energy Storage Solutions



Batteries



Panels



Hybrid inverter integrates with existing solar systems



### Genius On/Off-grid Battery Storage System

- 5kW Hybrid Inverter with LFP Battery
- Expand up to 20kWh battery storage
- Retrofit to existing solar power system
- Connect up to 4 battery modules
- Mobile app - access anytime, anywhere
- Peak load shifting
- Battery priority
- Easy set-up and install
- AC/DC surge protection
- IP65 weather rated



### 440W Tiger Neo Satin N-Type Solar Panels

- All-black 420-440W panel units
- N-type monocrystalline cells
- Up to 16 panels at 7kW in a single kit
- Includes all hardware and connectors
- Anodized alu. frame & mounting rails
- Maximum voltage: 32.99V
- Maximum current: 13.34A
- Module efficiency: 22%
- Comes with mounting kit
- SMBB & HOT2.0 Technology





# Deliver battery storage and panels to Australians



Up to 20kWh battery storage



Premium CATL battery cells



Durable & robust solar panels



Easy monitoring with phone app

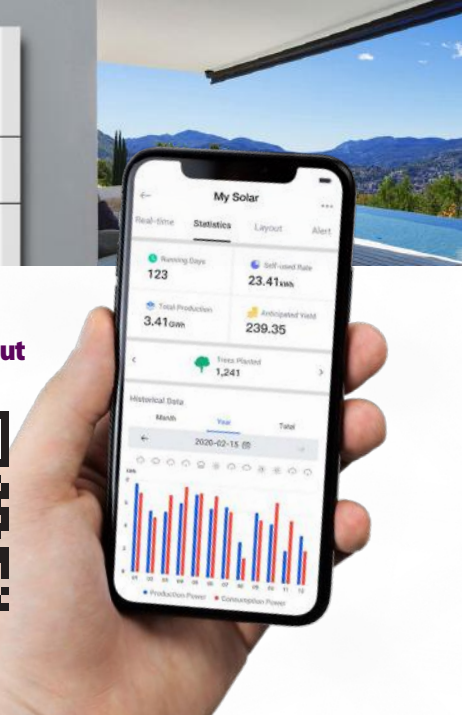
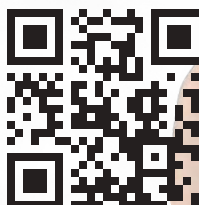


Streamline modular design



New or retrofit with existing PV system

Find out more about AVOL Genius:



## AVOL Genius Solar Power and Battery Kits

- AVOL 5kW Hybrid inverter with 5kWh modular LFP battery modules
- JinkoSolar 440W all-black monocrystalline solar panels
- Full set of install components incl. rails, cable, MC4 connector, etc.
- Mobile app monitoring of power generation, usage and grid feed-in

PWRSLR-J3P5B (3.5kW Panels, 5kWh Battery Kit)

PWRSLR-J7P5B (7kW Panels, 5kWh Battery Kit)

PWRSLR-J7P10B (7kW Panels, 10kWh Battery Kit)

PWRSLR-J7P15B (7kW Panels, 15kWh Battery Kit)

PWRSLR-J7P20B (7kW Panels, 20kWh Battery Kit)



Our kits include panel rails, end clamps, grounding lugs, earth/solar cable, isolator switch, MC4 connectors, PV/ES labelling and your choice of tile/tin roof mounts



## Genius Battery Kits

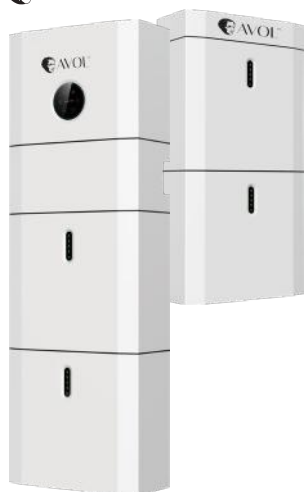
- 5Wh LiFePO4 Battery
- 5kW Hybrid Inverter
- Add AVOL battery storage to existing solar installations; keep your existing system in tact, use as AC coupled battery storage inverter system
- Power & communication connection cables incl.

AVOL-GENIUS5 (5kWh)

AVOL-GENIUS10 (10kWh)

AVOL-GENIUS15 (15kWh)

AVOL-GENIUS20 (20kWh)



## Genius Solar Power Kits

- AVOL inverter & panel kits
- AVOL 5kW hybrid inverter
- 440W Tiger Neo solar panels
- N-type monocrystalline cells
- Mounting rails and accessories for tin and tile roofs included
- Necessary cables and hardware included
- Durable against salt, wind, and other environmental factors

PWRSLR-J3P (3.5kW)

PWRSLR-J7P (7kW)



# ENSA™

LED Lighting & Energy Saving

## High power LED flood lighting for large projects



## Ask how we can assist you with your next project

Advice, resources and lighting simulations for your LED project submission

### ENSA™

#### LFL-F Series High Power LED Floods

- Available in 480W, 720W and 960W models
- Lumileds LEDs exceptional light output (+165lm/W)
- 60° beam angle, >80 CRI, 6500K cool white, IP66
- Customise lighting for large areas perfectly with 360° rotate & 140° tilt individually adjustable LED modules
- Ask us about lighting simulation & project assistance

LFL-F480-C (480W, 79,200lm)    LFL-F720-C (720W, 118,800lm)    LFL-F960-C (960W, 158,400lm)



**360° Rotate  
& 140° Tilt  
Modules**





# ENSA™

LED Lighting & Energy Saving

## Performance LED lighting for your next project



### ENSA™

#### LSL-B Series: LED Area/Street Lights

- Built in photocell models for dusk/dawn switching
- Available in 150W and 200W models
- Versatile mounting with 5 adjustable light brackets
- Slip fit, fixed/adjust pole, trunnion & yoke wall mounts
- 135lm/W, 5000K cool white, >70 CRI, 50,000hrs lifespan
- 155 x 85° beam angle, 1~10V / PWM dimmable
- IP66/IK08 weather/vandal rated, 20KV surge protection



LSL-B150-CP  
(150W, 20,250lm)

LSL-B200-CP  
(200W, 27,000lm)



LSL-BKTS  
(Slip Fitter)



LSL-BKTT  
(Trunnion)



LSL-BKTY100 (150W)  
LSL-BKTY200 (200W)  
(U-Wall Mount)



LSL-BKTP  
(Fixed Pole)

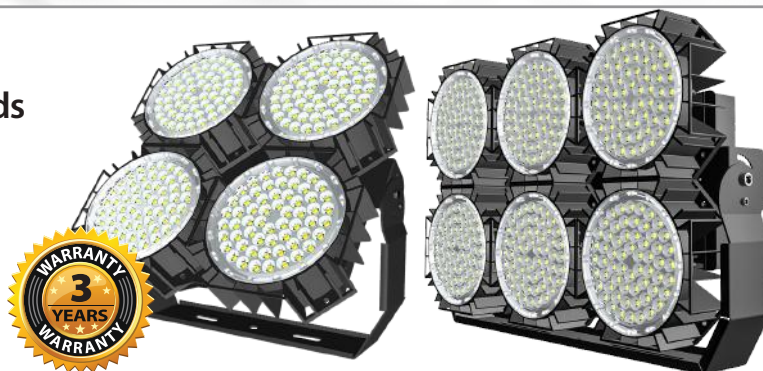


LSL-BKTA  
(Adjust. Pole)

### ENSA™

#### LFL-G2 Series: High Power LED Floods

- Superb 160lm/W luminous efficacy, >80 CRI
- Available in 240W, 360W, 480W, 720W & 960W
- 180° adjustable U-bracket to direct luminaires
- Incredible 100,000hrs rated LED lifespan
- 5000K cool white colour temperature
- Wide 60°x100° beam angle models (30° optional)
- IP67 weather rated; ideal for sporting grounds



LFL-G240-C2  
(240W, 38,400lm)

LFL-G360-C2  
(360W, 57,600lm)

LFL-G480-C2  
(480W, 81,600lm)

LFL-G720-C2  
(720W, 115,200lm)

LFL-G960-C2  
(960W, 153,600lm)

# ENSA™

LED Lighting & Energy Saving

## Deliver efficiency and security with ENSA Lighting



### ENSA™

#### LFL-B2 Series Pro LED Flood Lights

- Superb 150lm/W luminous efficacy, >70 CRI
- Built with high performance Lumiled LEDs
- Wide 120° beam angle, circular light distribution
- 3000K/5000K warm/cool white colour temp.
- Outstanding 50,000hrs rated LED lifespan
- Aluminium & toughened glass construction
- IP65 weather rated, 5 year warranty

LFL-B20-W2 (20W, 3000K)  
LFL-B20-C2 (20W, 5000K)

LFL-B30-W2 (30W, 3000K)  
LFL-B30-C2 (30W, 5000K)

LFL-B50-W2 (50W, 3000K)  
LFL-B50-C2 (50W, 5000K)

LFL-B80-C2  
(80W, 5000K)

LFL-B100-C2  
(100W, 5000K)

LFL-B150-C2  
(150W, 5000K)

LFL-B200-C2  
(200W, 5000K)

### ENSA™

#### LFL-C3 Series LED Sensor Flood Lights

- 140lm/W luminous efficacy, >80 CRI
- Effective light distribution with 120° beam angle
- Adjustable PIR detection up to 8m with a 140° arc
- Adjustable on-time delay (5s ~ 5min)
- 5000K cool white, 50,000hrs rated LED lifespan
- 240° adjustable U-bracket & PIR bracket for flexibility
- IP66 weather rated, 3 year warranty



LFL-C20-CS3  
(20W, 2400lm)

LFL-C30-CS3  
(30W, 3600lm)

LFL-C50-CS3  
(50W, 6000lm)



# ENSA™

LED Lighting & Energy Saving

## Commercial high bays with superior energy efficiency

9-in-1  
LED High Bay  
Lights

IP69K rated  
for food prep  
facilities



### ENSA™

#### LHB-G Series Adjustable LED High Bays

- **MULTI Power:** 80W, 120W or 150W power adjustable
- **MULTI Beam:** 60°, 90° or 110° beam angle adjustable
- **MULTI CCT:** Warm, natural or cool white adjustable
- High efficiency lighting 170lm/W with 5 year warranty
- Add retrofit motion sensor, configurable via Bluetooth

LHB-G150-A  
(High Bay)

LHB-G-BM  
(Motion Sensor)

LHB-G-BD  
(Wall Dimmer)



### ENSA™

#### LHB-F Series: Food Grade High Bays

- Available in 100W, 150W or 200W models
- 135lm/W, >80 CRI, 50,000hrs rated LED lifespan
- IP69K rated for pressure cleaning in food prep facilities
- In 4000K & 5700K natural or cool white, 120° beam angle
- NSF, ETL, DLC, SAA, IPART, VEET certifications

LHB-F100-C/N  
(100W)

LHB-F150-C/N  
(150W)

LHB-F200-C/N  
(200W)

# ENSA™

LED Lighting & Energy Saving

## Intelligent lighting to improve security & energy savings



### ENSA™

#### IP65 LED Sensor Batten Lights

- 2ft/4ft models, microwave sensor, set on-time duration
- **S2/SE Series:** Adjustable 2 stage dim (100% -> Dim -> Off), +80lm/W, 120° beam angle, 35,000hrs LED lifespan, IP65
- **SE Series:** 2hrs up-time backup battery, AS2293.3
- **S Series:** On/off mode only (100% -> Off), +75lm/W, 140° beam angle, 50,000 LED lifespan, IP65 rated

**S2 - Sensor, SE - Sensor/Battery**

LEDBT18WS2 (2ft, 18W)

LEDBT36WS2 (4ft, 36W)

LEDBT18WSE (2ft, 18W)

LEDBT36WSE (4ft, 36W)

**S - Sensor Batten**

LEDBT18WS (2ft, 18W)

LEDBT36WS (4ft, 36W)

### ENSA™

#### 16W LED Oyster Light Series

- In standard, sensor & sensor+battery backup
- 1200lm, 120° beam angle, 30,000hrs lifespan
- 3000K warm (-W) or 5000K cool (-C) colour temp.
- Frosted diffuser, IP66 & IK10 weather/vandal rated
- **Sensor:** Adjustable on-time delay / standby modes
- **Battery:** 3.7V 1500mAh NiMH >5hr uptime at 1.2W

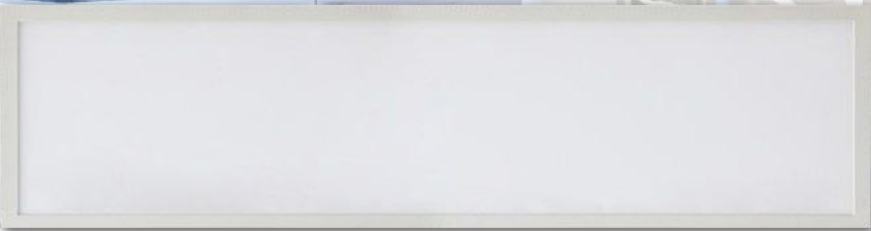

LOL-A16-W/C  
(Standard)

LOL-A16-WS2/CS2  
(Sensor Light)

LOL-A16-WSE/CSE  
(Sensor & Battery)



# Commercial LED lighting for new fitouts or LED upgrades

**ENSA™**

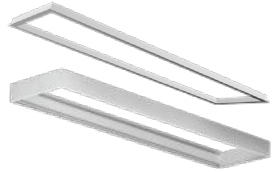
## LPL-C Series LED Panel Lights

- 40W, 4800lm (120lm/W), 110° beam angle
- 5000K cool white colour temperature
- Frosted diffuser, 3 different mounting options
- UGR <22, 300 x 1200mm hole cut size

**LPL-C40-C (40W, 4800lm)**

**Mounting Kits**

- LPL-C-S (Surface)
- LPL-C-R (Recessed)
- LPL-C-H (Hanging)



## ENSA™ Intelligent Motion Sensor & Dusk/Dawn Switches



- |                 |                 |                 |                 |               |                 |              |                  |              |
|-----------------|-----------------|-----------------|-----------------|---------------|-----------------|--------------|------------------|--------------|
| • 12m 180°      | • 4m x 20m      | • Ø6m 360°      | • Ø20m 360°     | • Ø8m 360°    | • Ø16m 360°     | • 15m 180°   | • 2 ~ 100 Lux    | • 5 ~ 50 Lux |
| • Wall mount    | • Corridors     | • Recessed      | • Ceiling mount | • Concealed   | • Ceiling mount | • Wall mount | • DIN rail/probe | • Wall clip  |
| • PIR detection | • PIR detection | • PIR detection | • PIR detection | • Microwave   | • Microwave     | • Microwave  | • Dusk/dawn      | • Dusk/dawn  |
| • IP65 rated    | • IP20 rated    | • IP20 rated    | • IP65 rated    | • Indoor only | • IP20 rated    | • IP65 rated | • IP65 rated     | • IP65 rated |

ENSA-PS1    ENSA-PS2    ENSA-PS3    ENSA-PS4    ENSA-MS1    ENSA-MS2    ENSA-MS6    ENSA-LC3    ENSA-LC1W

## ENSA™

### 18W PIR Sensor Tube Lights

- 4ft / 1212mm, T8 size, 6000K
- 18W, 120lm/W, 120° beam angle
- 8m PIR motion detection
- 60s on-time, dims to 30% on standby
- Includes LED starter for upgrades

**LTU-C18-CS2 (1800lm)**

## ENSA™

### 13.5W LED Linkable Cabinet Light

- 1050lm output, 3000K warm white
- Connect up to 3 LED lights together
- 10 year rated lifespan (30,000hrs)
- Incl. end-to-end connectors, surface and right angle mounting clips

**LED BR13W3K (13.5W, 3000K)**



# AVOL

Professional Electrical Supplies

## Excellent value for performance with AVOL lighting



### H Series LED Flood Lighting

- Available in 50W, 100W, 150W and 200W models
- 80lm/W, 6000K, 120° beam, IP66 rated, pre-terminated AC plug
- **Sensor Flood (-CS):** 12m arc PIR motion sensor, in 50W, IP65

LFL-H50-C  
(50W, 4000lm)

LFL-H100-C  
(100W, 8000lm)

LFL-H150-C  
(150W, 12000lm)

LFL-H200-C  
(200W, 16000lm)

LFL-H50-CS  
(50W, Sensor)



### LHB-E Series LED High Bays

- High 100lm/W light output in 100W and 150W
- 90° beam angle, >80 colour rendering index
- 35,000hrs rated LED lifespan
- 6000K cool white colour temperature
- IP65 rated, neat integrated driver design
- Pre-terminated 3-pin AC plug, mounting eyelet

LHB-E100-C  
(100W)

LHB-E150-C  
(150W)







# Superb WiFi air conditioning with 6 year warranty

World's largest residential AC manufacturer



## Inverter WiFi R32 Air Conditioner Systems

- Manufacturer 6-year parts and labour warranty
- Full inverter air con systems with indoor & outdoor unit
- Ideal for homes, offices and small businesses
- Up to 7.1kW cooling & heating; air flow up to 375L/sec
- Control via WiFi for iOS/Android (local IR remote incl.)

AC4201-(I/O)  
(2.7kW, 153L/s)

AC4204-(I/O)  
(5.2kW, 236L/s)

AC4207-(I/O)  
(7.1kW, 375L/s)



## Pre-insulated Pair Coil

- Available in 3 gauges
- Pre-insulated pair coil
- 410A rated; 20m rolls



ACA-PC01 (1/4 ~ 3/8", 6.35 ~ 9.53mm)

ACA-PC02 (1/4 ~ 1/2", 6.35 ~ 12.70mm)

ACA-PC03 (1/4 ~ 5/8", 6.35 ~ 15.88mm)



## AC Unit Wall Mounts

- Adjustable feet and position
- **-WB01:** 450 x 350 x 700mm
- **-WB02:** 550 x 450 x 850mm
- **-WB03:** 550 x 375 x 780mm



ACA-WB01 (120kg rated)

ACA-WB02 (150kg rated)

ACA-WB03 (200kg rated)



## 100mm Air Conditioning Ducting

- 100mm split ducting, 2m lengths (103x68mm)
- Flame retardant PVC, durable finish UV rated



DUCAC100DT  
(2m length duct)

100CC (Ceiling cap)

100CJ (Cover joint)

100FE (Flat elbow)

100FJ (Flex joint)

100TJ (Tee joint)

100VE (Vertical elbow)

100WC (Wall corner)



# Electrical range by AVOL



## Three Phase Round Pin Plugs (250V, 500V)

- 3, 4 & 5 Round Pin
- Available from 10A - 50A
- IP66 weather rated



## Angled Electrical Pin Plugs (250V, 500V)

- 3, 4 & 5 Round Pin
- Available from 10A - 50A
- IP66 weather rated



## Extension Sockets (250V, 500V)

- 3, 4 & 5 Round Pin Sockets
- Available from 10A - 50A
- IP66 weather rated



## Industrial Sockets

- 3, 4 & 5 Round Pin, 3 Flat Pin Sockets
- Available from 10A- 50A, IP66 rated



## Industrial Switch & Socket

- Surface mounted sockets with hinged lids and rotary switch
- 3, 4 & 5 Round Pin, 3 Flat Pin Sockets
- Available from 10A - 50A, IP66 rated



## 3 Flat Pin Plug & Extension Socket (250V)

- Available in 10A & 15A
- IP66 weather rated



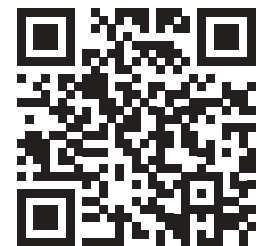
## 3 Pin Flat Appliance Inlet (250V)

- Available in 10A and 15A
- IP66 weather rated



## Round Pin Appliance Inlets (250V, 500V)

- Available in 3, 4 & 5 Round Pin
- Available from 10A - 50A, IP66 rated



Hundreds of AVOL electrical models  
available for your installation, see  
them all on our website



# AVOL complete electrical & comms conduit (AS/NZ2053)



## Orange Heavy Duty Rigid Conduit (4m)

- UV resistant PVC-U, 5 year warranty
- Electrical; complies to AS/NZS2053

CON140 (Ø20mm)  
CON141 (Ø25mm)  
CON142 (Ø32mm)  
CON143 (Ø40mm)  
CON144 (Ø50mm)  
CON145 (Ø63mm)



## Medium Duty Rigid Conduit Grey (4m)

- UV resistant PVC-U, 5 year warranty
- Electrical; complies to AS/NZS2053

CON100 (Ø20mm)  
CON101 (Ø25mm)  
CON102 (Ø32mm)  
CON103 (Ø40mm)  
CON104 (Ø50mm)  
CON105 (Ø63mm)



## Medium Duty Rigid Conduit White (4m)

- UV resistant PVC-U, 5 year warranty
- Telecom; complies to AS/NZS2053

CON120 (Ø20mm)  
CON121 (Ø25mm)  
CON122 (Ø32mm)

### Heavy Duty for Solar Cabling

CON161 (Ø25mm, Grey HD)



## Orange HD Corrugated Conduit

- UV resistant PVC-U, 5 year warranty
- Electrical; complies to AS/NZS2053

CCN140 (Ø20mm, 25m)  
CCN141 (Ø25mm, 25m)  
CCN142 (Ø32mm, 25m)  
CCN143 (Ø40mm, 25m)  
CCN144 (Ø50mm, 25m)  
CCN151 (Ø25mm, 25m, Grey, Solar)



## Grey MD Corrugated Conduit

- UV resistant PVC-U, 5 year warranty
- Electrical; complies to AS/NZS2053

CCN100 (Ø20mm, 50m)  
CCN101 (Ø25mm, 25m)  
CCN105 (Ø25mm, 50m)  
CCN102 (Ø32mm, 25m roll)  
CCN103 (Ø40mm, 25m roll)  
CCN104 (Ø50mm, 25m roll)



## White MD Corrugated Conduit

- UV resistant PVC-U, 5 year warranty
- Telecom; complies to AS/NZS2053

CCN120 (Ø20mm, 50m)  
CCN121 (Ø25mm, 25m)  
CCN122 (Ø32mm, 25m)  
CCN123 (Ø40mm, 25m)  
CCN124 (Ø50mm, 25m)



## Wide range of Electrical & Conduit Accessories

- UV resistant PVC-U, 5 year warranty

Junction boxes  
Deep Junction boxes  
Terminal Block Boxes

90° Sweep Bends  
Inspection Elbows  
Girder Clips Jars

Conduit Couplings  
Locating Flanges  
GPO C-Clips

Gal. Steel Half Saddles  
Saddle Spacers  
Screw Connector Jars



# New electrical range by AVOL



## Single & Double Pole GPOs

- Polycarbonate, UV resistant, 250VAC, AS/NZS3133, 3112, 3110
- Available in Single Pole and Double Pole, 10A and 15A models

### Single GPO

ESW161 (DP, 15A, White)

### Twin GPO

ESW150 (SP, 10A, White)  
ESW150B (SP, 10A, Black)  
ESW162 (DP, 10A, White)  
ESW162B (DP, 10A, Black)  
ESW165 (DP, R15A, L10A, White)  
ESW182 (DP, 15A, White)

### Twin GPO + Light Switch

ESW151 (SP, 10A, White)  
ESW164 (DP, 10A, White)

### Quad GPO

ESW184 (DP, 10A, White)  
ESW169B (DP, 10A, Black)

### Twin GPO with 2.4A USB Type A&C

ESW168 (DP, 10A, White)



## 10A Light Switches

- Polycarbonate, UV resistant, 250VAC, AS/NZS3133, 3112, 3110

### Horizontal Light Switches (White/Black)

ESW140 (Blank Plate, White)  
ESW141 / ESW151B (1-Gang)  
ESW142 / ESW152B (2-Gang)  
ESW143 / ESW153B (3-Gang)  
ESW144 / ESW154B (4-Gang)  
ESW145 / ESW155B (5-Gang)  
ESW146 / ESW156B (6-Gang)

### Vertical Light Switch (White)

ESW130 (DP, 15A, White)

### Architrave Light Switch (White)

ESW120 (1-Gang)  
ESW122 (3-Gang)  
ESW123 (4-Gang)



## Outdoor GPOs, Isolator Switches and Single Surface Plug Bases

- Single pole, IP53 rated outdoor GPOs in 10A and 15A models
- Variety of conduit entries (side and front, Ø25mm conduit size)
- SAA approved and complies with AS/NZS3123
- Double pole 35A isolator switch 35A IP66 weather rated
- Surface plug & quick-fit connector models, 10A rated

### Outdoor GPOs

WGPO110 (Single, SP, 10A)  
WGPO115 (Single, SP, 15A)  
WGPO210 (Twin, SP, 10A)  
WGPO215 (Twin, SP, 15A)  
WGPO2X (Twin + Switch, SP, 10A)

### Isolator Switch

ISM100 (DP, 35A, IP66)

### Surface Plug & Quick Connector

ELA130 (Surface Plug, 10A)  
ELA131 (Quick-Connect, 10A)



# AVOL complete electrical & comms conduit (AS/NZ2053)



## Wall Plates, Brush Plates and GPO Accessories

- Polycarbonate, UV resistant, wall plates suit Clipsal & AVOL mechs
- Nylon standard and bull nose brush plate (inlet size: 52x58mm)
- Insulation shroud, screw fit (polycarbonate, 98 x 55 x 51)
- Recessed mount box, screw fit (polycarbonate, 98 x 64 x 44mm)

### White Wall Plates

ESW100 (Blank)  
ESW101 (1-Gang)  
ESW102 (2-Gang)  
ESW103 (3-Gang)  
ESW104 (4-Gang)  
ESW105 (5-Gang)  
ESW106 (6-Gang)

### Brush Plates

ESW190 (Brush, White)  
ESW190B (Brush, Black)  
ESW191 (Bull Nose, White)  
ESW192 (Reverse Bull, White)

### GPO Accessories

ELA125 (Insulation Shroud)  
ELA126 (Recessed Box)



## Switch Mechanisms

- Suits AVOL & Clipsal wall plates
- Data mechs incl. wiring clip

### Switch Mechs (250V AC)

ELM140 (SP, 10A, White)  
ELM141 (SP, 16A, White)  
ELM150 (DP, 16A, White)  
ELM150B (DP, 16A, Black)  
ELM151 (DP, 35A, White)

### Data Mechs (incl. Wire Clip)

ESW120 (CAT5e)  
ESW121 (CAT6)



### USB Mechs (5V)

ELM160 (2.1A, 1 x Type A)  
ELM161 (2.1A, 2 x Type A)  
ELM162 (2.4A, Type A & C)

### AV Mechs

ELM100 (Red, RCA)  
RCA also in White & Yellow  
ELM122 (HDMI-HDMI)

ELM101 (F-F Type)  
ELM104 (F Type Right Angle)  
ELM102 (BNC to F-Type)  
ELM103 (BNC to Block)



## Electrical Switchboards with Enclosure

- 240~415V, up to 63A rated, UV/fire resistant HIPS/ABS housing, indoor or outdoor (IP66), SAA/IEC certification

FMS-8 (8-Pole, Flush)  
SMS-8 (8-Pole, Surface)

SMS-12  
(12-Pole, Surface)

SMS-18  
(18-Pole, Surface)

SMS-12W (IP66,  
(12-Way, Surface)

# We have the power supplies to suit your alarm or CCTV job



**SECURVIEW**

## Heavy Duty CCTV PSUs

- 18 individually fused outputs; compact metal case
- Thermal cutoff, short circuit, high voltage & over current

PS12VDC10A18CHB (12VDC 10A output)

PS24VAC10A18CH (24VAC 10A output)



## DIN Rail Adjustable Voltage PSUs

- 12VDC 7.5A and 24VDC 4A models; 88~264VAC input
- Current limiting on overload, auto-shutdown on over voltage/temperature; free air convection cooling

PSDR12V7A2 (12VDC 7.5A)

PSDR24V4A2 (24VDC 4.0A)

**Rhino**

## 4 Port 12VDC PSU

- Isolated power outputs
- 4 x 12VDC at 0.7A outputs
- 100~240VAC input voltage
- 4 x DC plug terminated



PS12VDC700-4

**SECURVIEW**

## 4 Channel 12V PSU

- 4CH 12VDC 5A supply
- Adjustable output 12~13.8V
- 100~240VAC input voltage
- High voltage & overcurrent protection



PS12V5A4CH



**Rhino**

## 12VDC PSUs

- 2A and 5A models

PS2000SM (2A)

PS5000SM (5A)



**Watchguard**

## 12VDC Lead Acid Batteries

- Available in 7A and 1.2A
- Sealed lead acid batteries

D12V7A

D12V1.2

**SECURVIEW**

## DC Power Converters

- Convert DC 12V~24V or 24V~12V
- Wide input and stable output voltage
- 18~35V to 12V; 11~16V to 24V
- Overcurrent & overvoltage protection
- IP68, anti-vibration, dustproof



VSPWCONVERTER1 (12 to 24V)

VSPWCONVERTER2 (24 to 12V)

**SECURVIEW**

## Leads & Connectors

- BNC, Power and RJ45 plugs and cable connectors
- Contact us for our full range and bulk pricing



DC4CHLOOM (4-way DC splitter)

DC5CHLOOM (5-way DC splitter)

DC8CHLOOM (8-way DC splitter)

VSDCPFTB/MTB (DC to Term. block)

VSFBNCTWIST (BNC twist connect.)

VSFBNC59 (RG59 BNC connector)





# RhinoCo Runout

Brand new, run out models with full warranty at great prices



## Ultimate AI 4.0MP Bullet Cameras

- Stream 4MP@25fps
- 2.7~12mm lens; 8~32mm long range zoom (-IZ)
- 50m IR distance (100m -IZ)
- AI people & vehicle detection, face capture, people counting
- IP67, ePoE, heater

**VSIPU-4BIRM-I**  
**VSIPP-4BIRM-IZ**



## Ultimate AI 4.0MP Vandal Domes

- Stream 4MP@25fps
- 2.7~12mm lens; 8~32mm long range zoom (-IZ)
- 40m IR distance (80m -IZ)
- AI people & vehicle detection, face capture, people counting
- IP67, IK10, ePoE, heater

**VSIPU-4DIRM-I2**  
**VSIPP-4DIRM-IZ**



## Pro Low Light 6.0MP Active Deterrence

- Stream 6MP@25fps
- Low light, 1/1.8" sensor
- Wide fixed 2.8mm lens
- 30m infrared distance
- AI people & vehicle detection, face capture, people counting
- IP67 rated housing

**VSIPP-6DG-ID4-P**  
**(Limited stock available)**



## IP Intercom Indoor Monitor

- 7" TFT capacitive touchscreen (800x480)
- Supports residential and apartment door stations
- MicroSD slot for storage
- Record, take snapshot, video message, DND
- 12VDC power input

**INTIPMON**  
**(Limited stock available)**



## 128CH Ultimate NVR with 8 HDD Bays

- Supports 12MP cameras
- 384Mbps inc. bandwidth
- Decode 16CH@1080p
- 8 x SATA HDD bays
- AI-by-camera support only, no AI-by-NVR
- 2 x HDMI (4K), VGA display
- 2 x 1000M RJ45 output

**NVR128ULT**  
**(Limited stock available)**



## Fumagalli 2.5m Black Surface Pole

- Galvanised pole with UV resistant resin layer to prevent colour fading
- 60mm diameter spigot
- Mount cameras or lights
- Made in Italy
- Modern design
- Incl. cage, bolt template

**FU-EKT-25B**  
**(Limited stock available)**



## Fumagalli 6W LED Bollard Lights (Grey)

- 600lm light output
- Switchable colour temp.
- Surface (floor) mount
- UV and shock resistant light housing
- Made in Italy
- IP55 weather rated
- Incl. GU10 bulb

**FU-CAR-6G**  
**(Limited stock available)**



## Fumagalli 7W LED Recess Lights (Black)

- 850lm light output
- Switchable colour temp.
- Recessed wall mount
- UV and shock resistant light housing
- Made in Italy
- IP55 weather rated
- Incl. R7 118mm bulb

**FU-NIN-7B**  
**(Limited stock available)**

# Connect with RhinoCo online for more

Gain access to tools and resources to help you win your next install job



## Price Match Support

We are committed to ensuring your price competitiveness to help you win your next job. Request a price match for any new orders at:

**[go.rhino.au/pricematch](https://go.rhino.au/pricematch)**

Conditions and exclusions apply, visit the website above or scan the QR code below for full details



## Custom Marketing Material

Generate custom product brochures & business cards on our Portal, featuring your own business logo and details.



## Quote with your Branding

Save your product selection as a quote for easy reordering & export equipment schedules using your branding.



## Online Tools & Tech Support

Calculate CCTV system HDD storage with the Disk Calculator, and access our helpful online support database.



## Exclusive Trade Deals

Gain access to trade customer pricing and exclusive special offers, with new products and offers added regularly.

For online sales & quick fulfilment, purchase online at **[www.rhino.au](https://www.rhino.au)**



**Over 48 Years | Since 1978**

M/L: 407530935

**Get in touch with us or visit our Sydney branches:**

(02) 9671 6711 | [sales@rhino.au](mailto:sales@rhino.au) | [www.rhino.au](https://www.rhino.au)

### McGraths Hill

Head Office & Distribution  
9 Hannabus Place  
McGraths Hill, NSW 2756

### Haberfield

Showroom & Sales Office  
223-225 Ramsay Street  
Haberfield, NSW 2045

### Guildford

Showroom & Sales Office  
577 Woodville Road  
Guildford, NSW 2161

Exclusive Trade Only Specials. Released 2026, supersedes all past offers, prices valid while stocks last. Pricing & product availability may be subject to change without notice; all prices exclude GST. Some offers may commence or extend beyond the promotional period. Errors & omissions excepted.