

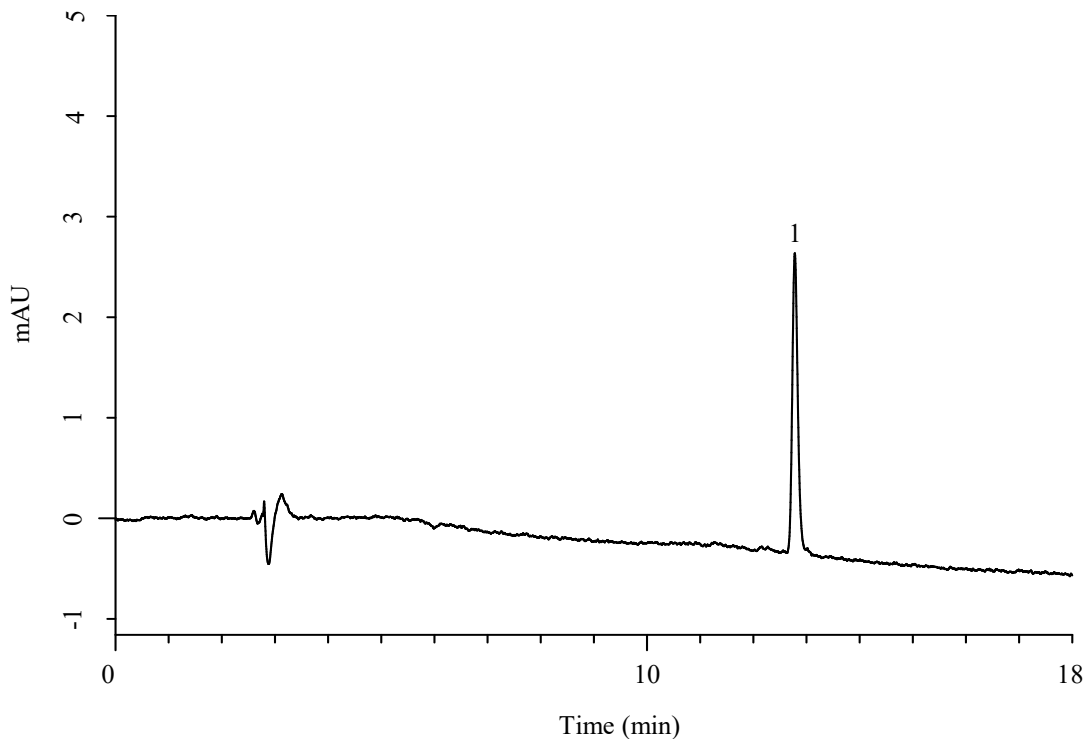
# InertSearch for LC

Inertsil Applications

## Analysis of Lutein

(Under the Condition of GB5009.248-2016)

Data No. LB747-1087



### Conditions

**System** : Primaide HPLC system (HITACHI)

**Column** : InertSustain C30 (GL Sciences Inc.)  
(5  $\mu$  m, 250 x 4.6 mm I.D.)

**Column Cat. No.** : 5020-17145

**Eluent** : A) 0.1 % BHT in (CH<sub>3</sub>OH/H<sub>2</sub>O = 88/12, v/v)  
B) 0.1 % BHT in *tert*-Butyl methyl ether

**Analyte:**

1. Lutein

0.1  $\mu$  g/mL

Time (min)	A (vol%)	B (vol%)
0.0	100	0
18.0	10	90
18.1	100	0
28.1	100	0

**Flow Rate** : 1.0 mL/min

**Col. Temp.** : 30 °C

**Detection** : VIS 445 nm

**Injection Vol.** : 50  $\mu$  L

**Sample** : Standard