



# THE DREAM SCHOOLYARD

Jambette.com

# Dream Big

The schoolyard is both the heart of the primary school and at the heart of child development. In fact, it is a common area where children spend several hours a week learning how to live together.

The schoolyard fosters the learning of many personal and social skills: communication, cooperation, mutual aid, excelling, negotiation, respecting differences, etc. Therefore, it is essential to create a schoolyard layout that offers children spaces that will be stimulating and inspiring.

At Jambette, we see an opportunity to let our creative juices flow and innovate to do more and do it better.





WOW!

To foster the overall development of youth, there should be a variety of activity zones in the schoolyard. Creating different zones allows youth to have access to a variety of equipment and surfaces, which helps strengthen all dimensions of their development.<sup>1</sup>

It should be noted that one activity zone can be found in more than one area of the yard, just like a zone can serve several purposes. For example, the outdoor classroom zone could also be used as a rest zone or a zone for arts and shows.

## ZONES

- 1 Welcome
- 2 Socialization • Rest
- 3 Creation
- 4 Kindergarten
- 5 Physical play
- 6 Group play – Grades 1-2
- 7 Group play – Grades 3-4 and Grades 5-6
- 8 Play structures
- 9 Arts and shows • Outdoor classroom
- 10 Individual or small group play
- 11 Calm play



<sup>1</sup> Guide to creating a primary schoolyard



4

10

3

10

7

5

10

6

10

10

6

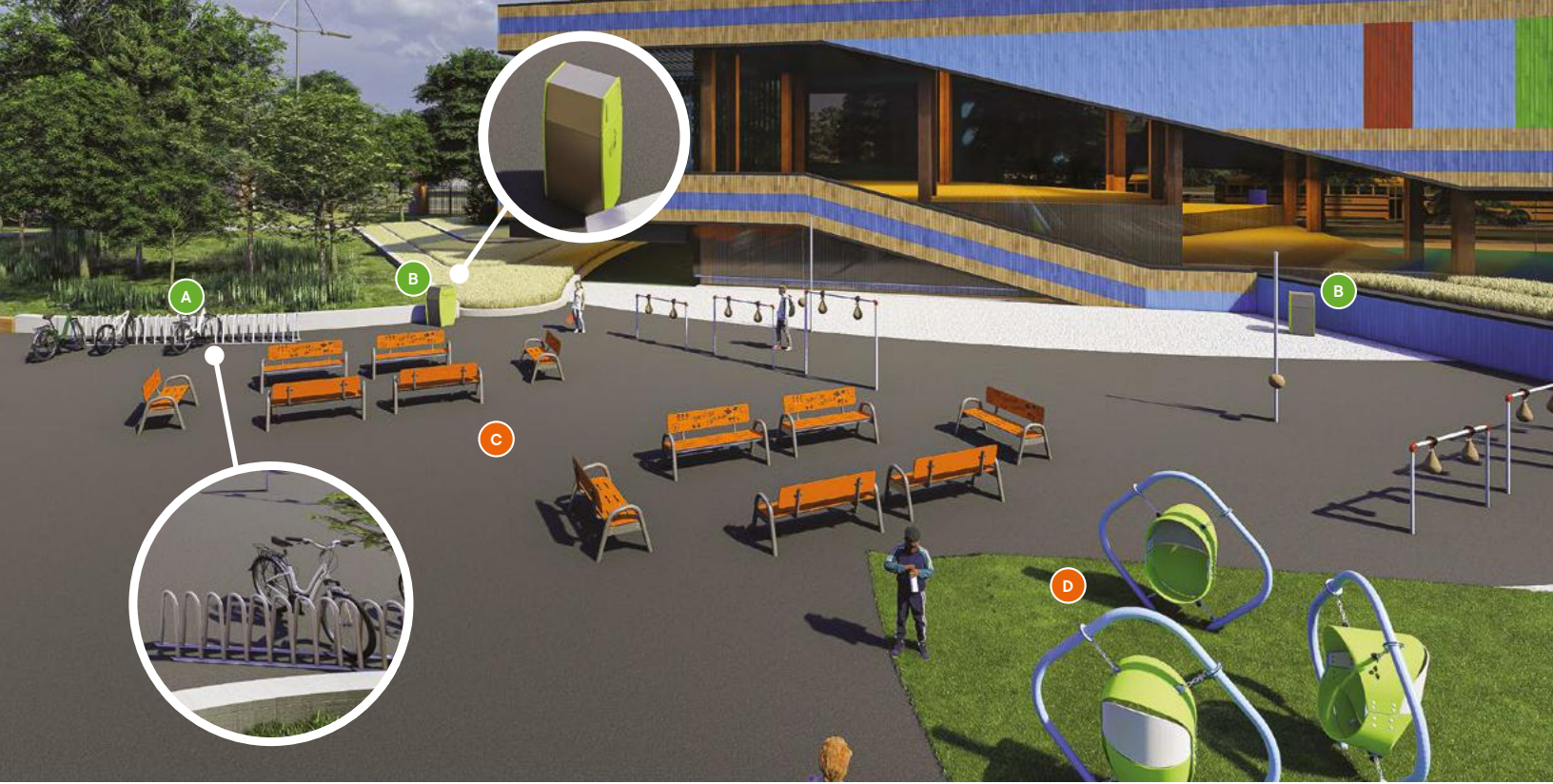
10

6

9

8

10



ZONE 1

## Welcome

- A** H-13019  
The bike rack 7 places
- B** H-13013  
The waste basket  
Closed model  
(with swing door)

ZONE 2

## Socialization Rest

- C** H-14000  
The benche with back
- D** L-19080  
The suspended nest

ZONE 3

## Creation

- E** L-18043  
The spinning chair
- F** L-19038-A  
The creative space
- G** A-16000  
The villa

ZONE 4

## Kindergarten

- H** J3-18050-A  
The play structure





ZONE 5

## Physical play

- A** **J2-19085-5B**  
The play structure
- B** **G-18012**  
The Tree
- C** **L-09001**  
The spinner Xyrä-35
- D** **L-19046-B**  
Double modslide hill slide
- E** **J6-17006-5BP**  
The manta climber





ZONE 6

## Group play – Grades 1-2

- A L-06013**  
The arched swing sets 8 places
- B J-18004**  
The toddler sports unit

ZONE 7

## Group play – Grades 3-4 and Grades 5-6

- C MU-16008-B**  
The Müel multisport
- D J-18004**  
The toddler sports unit
- E H-14000**  
The benche with back







ZONE 8

## Play structures

**A** CX-19002-5B  
The CitipleX

**C** L-13004  
The standing Teeter Totter

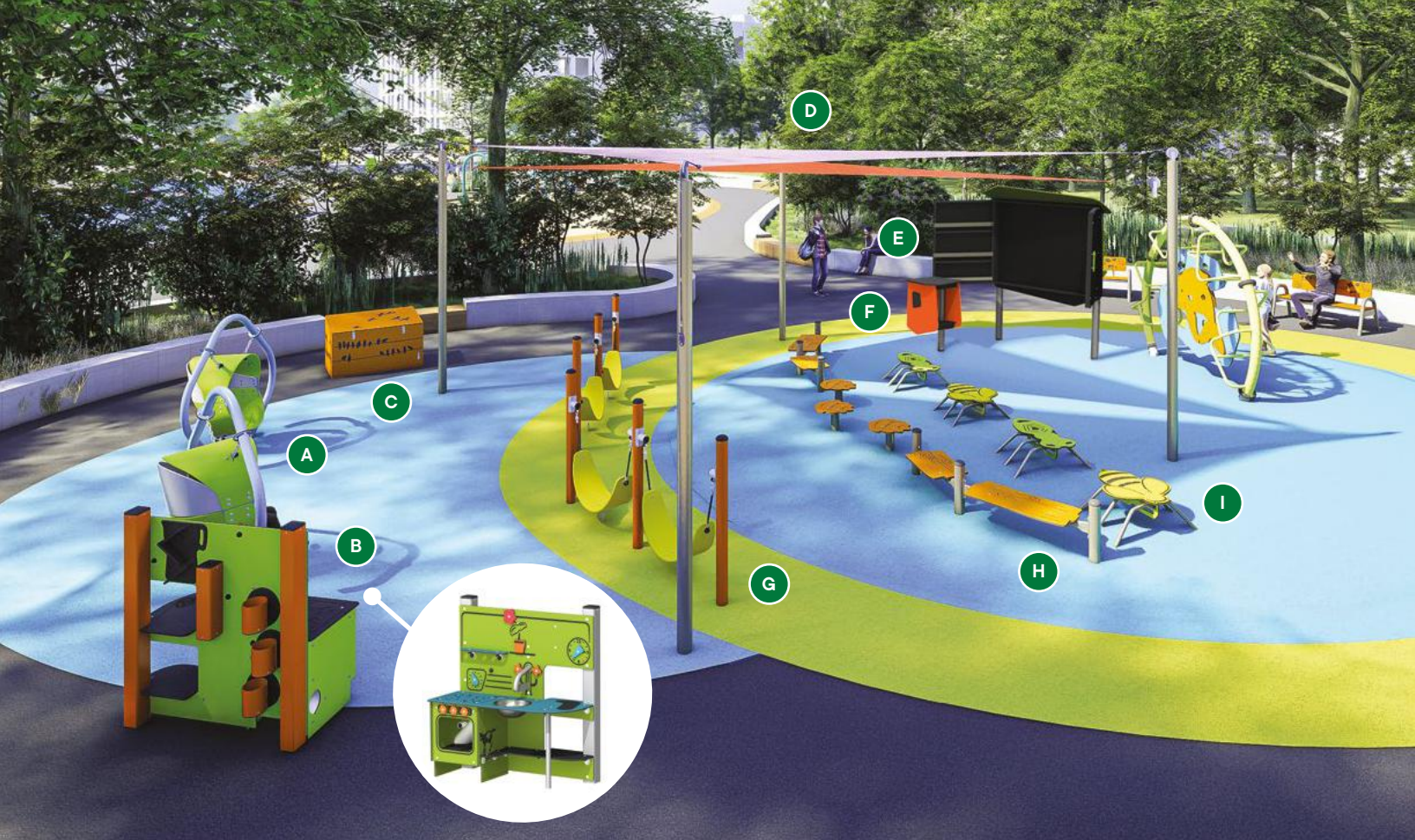
**B** J6-19001-5B  
The manta climber

**D** J6-19001-5B  
The manta climber



Arts and shows •  
Outdoor classroom

- A** L-19080  
The suspended nest
- B** A-18000  
The kitchenette
- C** C-17000  
The toy box
- D** S-5000  
The shade sails
- E** A-20000  
The chalkboard panel with doors
- F** A-20002  
The side table
- G** L-19090-B  
The double freestanding hammock
- H** L-19082-A  
The benches
- I** G-20000  
The worker bee on the ground
- J** G-14006  
The whale iris
- K** L-09001  
The spinner Xyrä-35
- L** LA-16006  
The eco-mobile spring rider





ZONE 10

## Individual or small group play

**A** Individual or small group play

ZONE 11

## Calm play

**B** L-9210-B2  
6' punching balls

**D** L-99212  
5' punching balls

**C** LA-8601  
The tetherball





**SWEET!**



**Jambette**.com

700, rue des Calfats  
Lévis, Québec  
G6Y 9E6  
Canada  
Tel: 418-837-8246  
Toll-free: 1-877-363-2687  
Fax: 418-837-2916

[jambette.com](http://jambette.com)

PRINTED IN CANADA