

INTRODUCING



ACE

Fibre-based innovation in the
world of visual communications.

FROM SPICERS



ACE THE GAME.

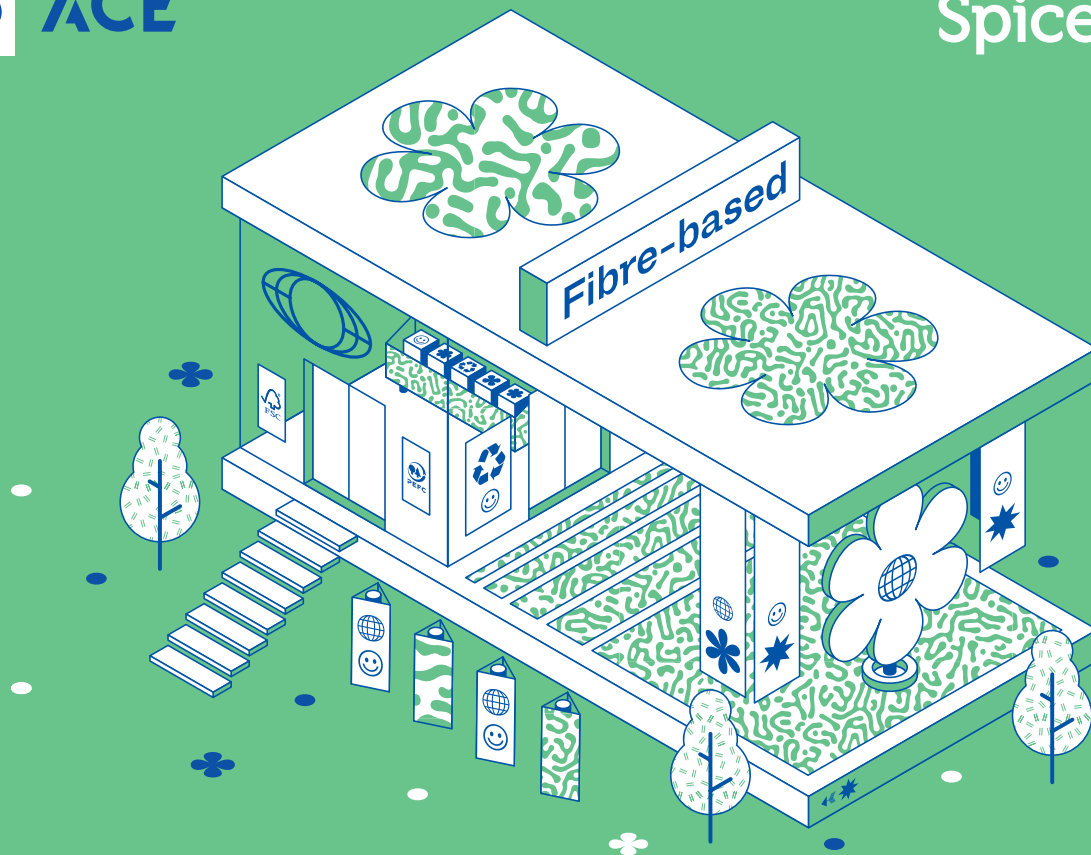
Where performance meets sustainability



1300 132 644

| spicers.com.au |

Spicers



INTRODUCING ACE FROM SPICERS

Fibre-based innovation in the world of visual communications.

With Ace, you're not just raising the stakes; you're reshuffling the game entirely. Imagine a material that combines the finesse of a royal flush with the durability of a diamond-hard hand.

Crafted with precision and reinforced with the strength of a winning strategy, Ace is the wildcard you need to outplay, outlast, and outbuild the competition.

With its CoC Certifications and complete recyclability, Ace is not merely a product; it embodies our commitment to sustainable excellence.

Ace from Spicers offers a variety of sustainable solutions tailored to meet your diverse applications. Whether you seek eye-catching point of sale displays, elegant indoor displays, or resilient outdoor signage, the Ace range delivers unparalleled quality and eco-consciousness. Its versatility extends to retail spaces, events, wayfinding solutions, and more, ensuring your message resonates effectively.

Experience the seamless blend of sustainability, quality, and versatility with Ace.

ACE THE RANGE

-  **ACE SCREENBOARD**
-  **ACE OUTDOOR**
-  **ACE HIGH WHITE**
-  **ACE KRAFT**
-  **ACE HIGH BULK**
-  **ACE MATT ART**
-  **ACE BLOCKOUT**
-  **ACE GREYBACK**
-  **ACE ICB**
-  **ACE HCB**
-  **ACE FLUTE**



ACE THE RANGE

ACE SCREENBOARD

Available in 1mm, 1.5mm, 2mm & 2.9mm

Ace Screenboard is a premium coated display board ideally suited for large format digital printing.

FEATURES & APPLICATIONS

- Coated both sides with high white surface
- Super smooth surface
- Outstanding cutting results
- High bulk & stiffness
- Ideally suited for hanging signage, POS displays, aisle fins, header cards, category signage, promotional signage, shop window promotions, exhibition stands & mounting
- Print Compatibility: Latex & UV Curable Inks



The mark of responsible forestry
FSC® C010628

ACE HIGH WHITE

Available in 1.5mm, 2mm & 2.9mm

Ace High White is a premium coated display board ideally suited for large format digital printing.

FEATURES & APPLICATIONS

- Coated both sides with high white surface
- Super smooth surface
- Outstanding cutting results
- High bulk & stiffness
- Ideally suited for hanging signage, POS displays, aisle fins, header cards, category signage, promotional signage, shop window promotions, exhibition stands & mounting
- Print Compatibility: Latex & UV Curable Inks



The mark of responsible forestry
FSC® C010628

ACE OUTDOOR

Available in 0.9mm, 1.25mm, 1.5mm & 2.2mm

Ace Outdoor is a 100% fibre-based coated display board designed for short-term wet & moisture sensitive environments.

FEATURES & APPLICATIONS

- Coated both sides with white surface
- Ideal for moisture sensitive indoor applications: chiller signage, door entrance signage, mop trays, horticultural POS
- Short-term outdoor applications: A-frames, bollard covers, election signage, petrol station pump toppers, sign on a fence
- Promotions and events: event signage, ice buckets, directional signage
- Print Compatibility: UV Curable Inks & Offset Printing



The mark of responsible forestry
FSC® C010628

ACE KRAFT

Available in 1mm, 1.5mm, 2mm & 2.9mm

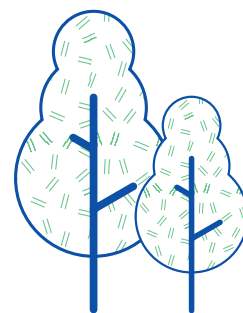
Ace Kraft is an uncoated display board with a natural, kraft surface on both sides that is ideally suited for large format digital printing.

FEATURES & APPLICATIONS

- Natural kraft look & feel
- Clean, pure centre
- Outstanding stay flat properties
- Ideally suited for hanging signage, POS displays, aisle fins, header cards, category signage, promotional signage, shop window promotions, exhibition stands & mounting
- Print Compatibility: UV Curable Inks



The mark of responsible forestry
FSC® C010628



ACE ICB

Ace ICB is an innovative and versatile carton board crafted using an inverted corrugated board design, providing strength and stability for a wide range of interior applications. The surface and core is FSC® Certified, recyclable, & made from recycled content.

FEATURES & APPLICATIONS

- Ideal for short to medium structural applications. POS displays, shop fitouts, exhibition stands, mounting boards, header cards and many more
- Suitable for shape cut, v-notch, curve & laminate
- Print Compatibility: Latex & UV Curable Inks

PRODUCT RANGE

- **ACE ICB KRAFT CORE**
Available in 10mm & 16mm
- **ACE ICB WHITE CORE**
Available in 10mm & 16mm
- **ACE ICB BLACK CORE**
Available in 10mm & 16mm



The mark of responsible forestry
FSC® C010628

ACE HCB

Ace HCB is an innovative lightweight carton board, its honeycomb core is engineered for exceptional structural integrity. Its smooth and flat surface is ideal for high-resolution printing. The surface and core is FSC® Certified, recyclable, and made from recycled content.

FEATURES & APPLICATIONS

- Ideal for short to medium structural applications. POS displays, shop fitouts, exhibition stands, mounting boards, header cards and many more
- Suitable for shape cut, v-notch, curve & laminate
- Print Compatibility: Latex & UV Curable Inks

PRODUCT RANGE

- **ACE HCB WHITE CORE**
Available in 5mm
- **ACE HCB BLACK CORE**
Available in 5mm



The mark of responsible forestry
FSC® C010628

ACE HIGH BULK 1/S

Available in 295gsm, 325gsm, 350gsm & 380gsm

Ace High Bulk is a dependable 1/sided bleach board with a premium coated print surface and light-coated reverse side. Economical without compromising on quality, Ace High Bulk is crafted using PEFC certified virgin fibres to hit sustainability targets and is recyclable, biodegradable and compostable.

FEATURES & APPLICATIONS

- High White
- Made from high quality primary fibre
- Direct food contact safe
- Coated ultra smooth surface
- Reverse side 'lick' coated
- Light weight & durable
- Ideally suited for cards, covers, multimedia products, POS displays, posters, header cards, fragrance, cosmetics, toiletries and premium packaging
- Print Compatibility: Latex & UV Curable Inks



ACE HIGH BULK 2/S

Available in 300gsm, 350gsm & 400gsm

Ace High Bulk, the economically priced, double-sided artboard that consistently delivers outstanding press performance. This premium 2/S Artboard features a double-coated, bright white surface that is smooth to the touch and offers exceptional bulk.

FEATURES & APPLICATIONS

- Premium double coated surface
- Clean ultra smooth surface
- Bright white smooth surface
- Excellent rigidity
- Uniform ink absorption
- Exceptional bulk
- Economically priced
- Ideally suited for luxury goods packaging, cosmetics packaging, gift cards, presentation folders, business cards, menus, POS displays, promotional material, direct mail & swing tags
- Print Compatibility: Latex & UV Curable Inks



ACE MATT ART

Available in 200gsm & 250gsm

Ace Matt Art is a matt coated art paper that provides an excellent surface for colour reproduction. High whiteness & opacity with excellent bulk.

FEATURES & APPLICATIONS

- Quality matt coating provides excellent surface for colour reproduction
- High whiteness & opacity with excellent bulk
- Ideally suited for poster and point of sale applications
- Print Compatibility: Latex, UV Curable Inks & Offset Printing



ACE BLOCKOUT

Available in 260gsm

Ace Blockout is the ultimate solution for high-impact visual communication, offering exceptional performance and versatility. This premium 2-sided, 100% opaque, black-centred artboard is designed to ensure your creative vision is displayed with maximum clarity and zero interference from unwanted show-through.

FEATURES & APPLICATIONS

- Premium European 2 sided, 100% opaque, black-centred artboard
- Perfect for jobs where no show through is required
- 1320 & 1600 wide reels available for sheeting & rewinding to bobbin rolls
- Specifically designed for point of purchase displays, posters, hanging window displays
- Print Compatibility: Latex & UV Curable Inks

**Available FSC® Certified upon request*



ACE GREYBACK

Available in 350gsm

Ace Greyback is a high quality duplex board with a smooth white clay coated top surface, and natural grey shade sealed reverse. Fully recyclable, biodegradable and FSC® Certified.

FEATURES & APPLICATIONS

- Clay coated smooth surface
- Natural grey sealed reverse side
- Excellent rigidity
- Food contact safe to FDA standards
- Ideally suited for food packaging, fast moving consumer goods, pet food packaging, detergent packaging, folders, CD wallets, cards & confectionary
- Print Compatibility: Latex & UV Curable Inks



ACE FLUTE

Available in 5.3mm

Ace Flute is three-layer 5mm fibre-based sheet consisting of 1EB corrugated cardboard sheeting, sandwiched between two solid sheets of Ace High Bulk. Ace Flute is a new generation fibre based, corrugated structured, smooth 2-sided surface. Light weight, rigid sheet especially manufactured for sign and display applications.

FEATURES & APPLICATIONS

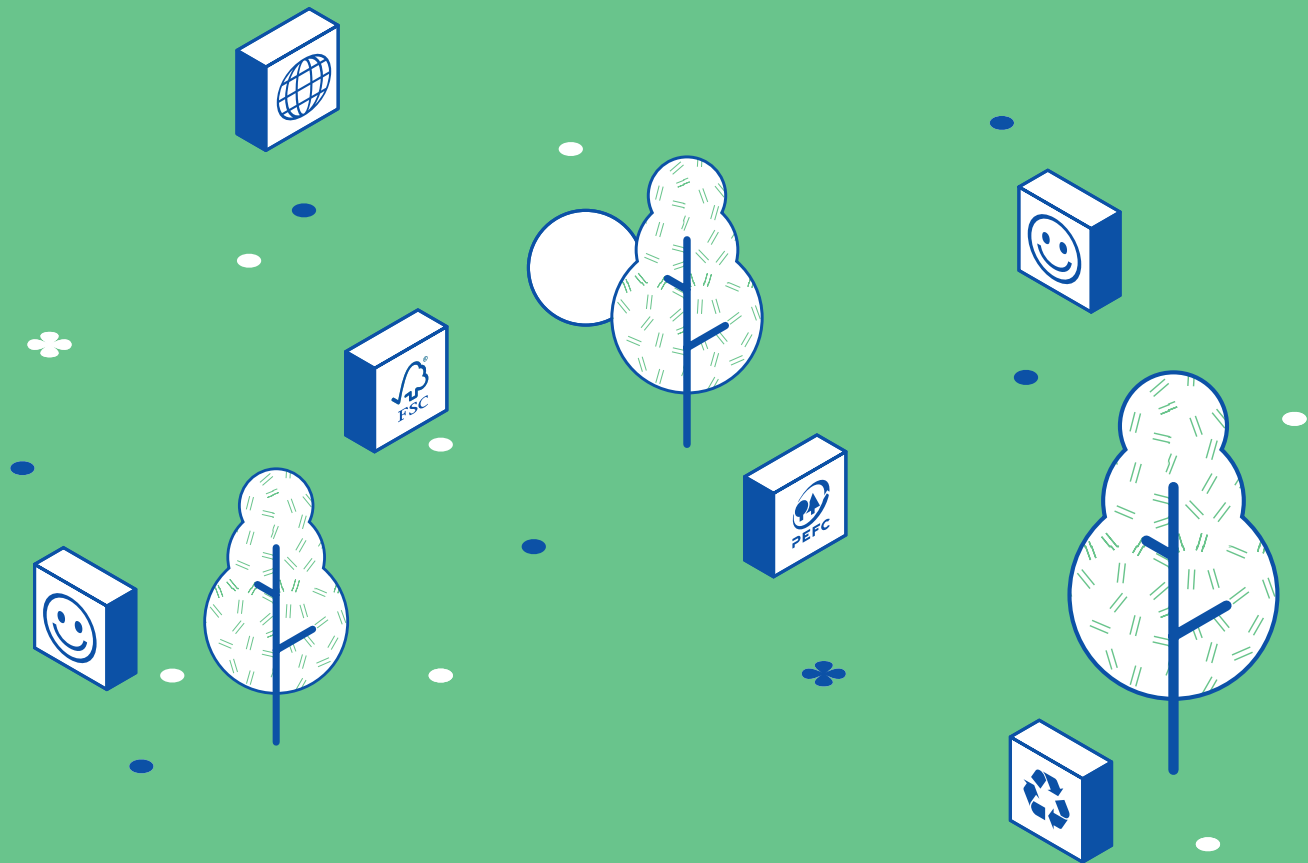
- High white coated and ultra smooth print surface
- Suitable replacement to foamed PVC, foamed polystyrene, and polypropylene boards
- Lightweight rigid, economical and long lasting
- Suitable for indoor applications, POS, posters and header cards
- Materials used in manufacturing Ace Flute are CoC Certified
- Print Compatibility: Latex & UV Curable Inks



Contact your local Spicers representative for enquiries and stock availability.

1300 132 644 | spicers.com.au | @spicersaus

ACE THE GAME.
Where performance meets sustainability



For product queries please contact your Spicers representative directly, or your local branch from the list below.

VIC

155 Logis Boulevard
Dandenong South VIC 3175

T (03) 9768 8400

F (03) 9768 8401

info.vic@spicers.com.au

NSW

Unit 2/100 Lockwood Road
Erskine Park NSW 2759

T (02) 9735 2666

F (02) 9735 2600

salesnsw@spicers.com.au

QLD Brisbane

75 Tradecoast Drive
Eagle Farm QLD 4009

T (07) 3084 5200

F (07) 3084 5297

info.qld@spicers.com.au

QLD Townsville

28A Casey Street
Aitkenvale QLD 4818

T (07) 3084 5200

F (07) 3084 5297

info.qld@spicers.com.au

WA

19 Milly Court
Malaga WA 6090

T (08) 6310 4300

F (08) 9248 6515

info.wa@spicers.com.au

SA

113 Ledger Road
Beverley SA 5009

T (08) 8243 9393

F (08) 8243 9397

info.sa@spicers.com.au

NT

57 Winnellie Road
Winnellie NT 0820

T (08) 8947 0188

F (08) 8947 1366

info.nt@spicers.com.au

TAS

4-8 Sunmont Street
Derwent Park TAS 7009

T (03) 6272 5333

F (03) 6272 8103

info.tas@spicers.com.au

Printed on Pacesetter Satin 200gsm – April 2025