

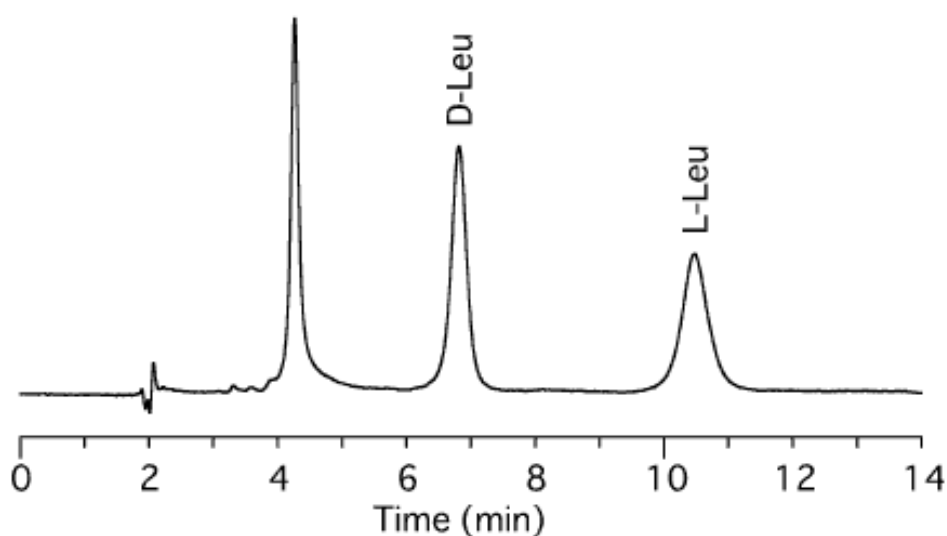
InertSearch™ for LC

Inertsil® Applications

Analysis of OPA-Leucine (Leu)

Data No. LA375-0000

OPA-Leu



Column : Bioptic AV-1
5µm
150 × 4.6 mmI.D.

Solutes : 1. OPA-D-Leu
2. OPA-L-Leu

Column Cat. No. : 5020-02511

Eluent : Methanol / 50mM phosphate buffer (pH6.6) = 8 / 92 (w / w)

Flow rate : 1.0 mL/min.

Col. Temp. : 40°C

Detection : UV 340nm

Injection Vol. : 5µL

Sample : 10uL Amino acid sol.(10mg/mL 50%MeOH)+ 40uL
OPA sol.
L 2-mercaptoethanol in 10mL borate buffer
pH9.2)mixing