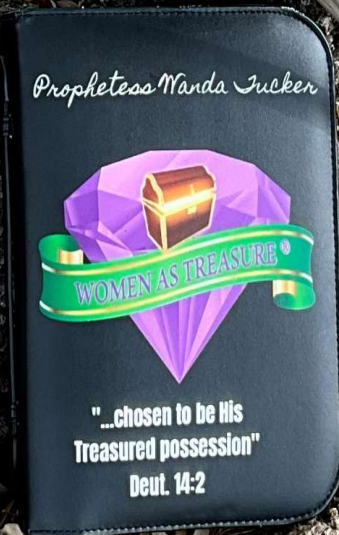


# THE SWORD OF THE SPIRIT SERIES

MARCH  
2026

FAITH IS THE  
GATEWAY  
TO EVERY  
PROMISE  
OF  
GOD



# **We Are All Systems Go On The SWORD OF THE SPIRIT SERIES**

We hope that you are availing yourself to the Sessions as well as our Deeper Dives that are being presented for your benefit.

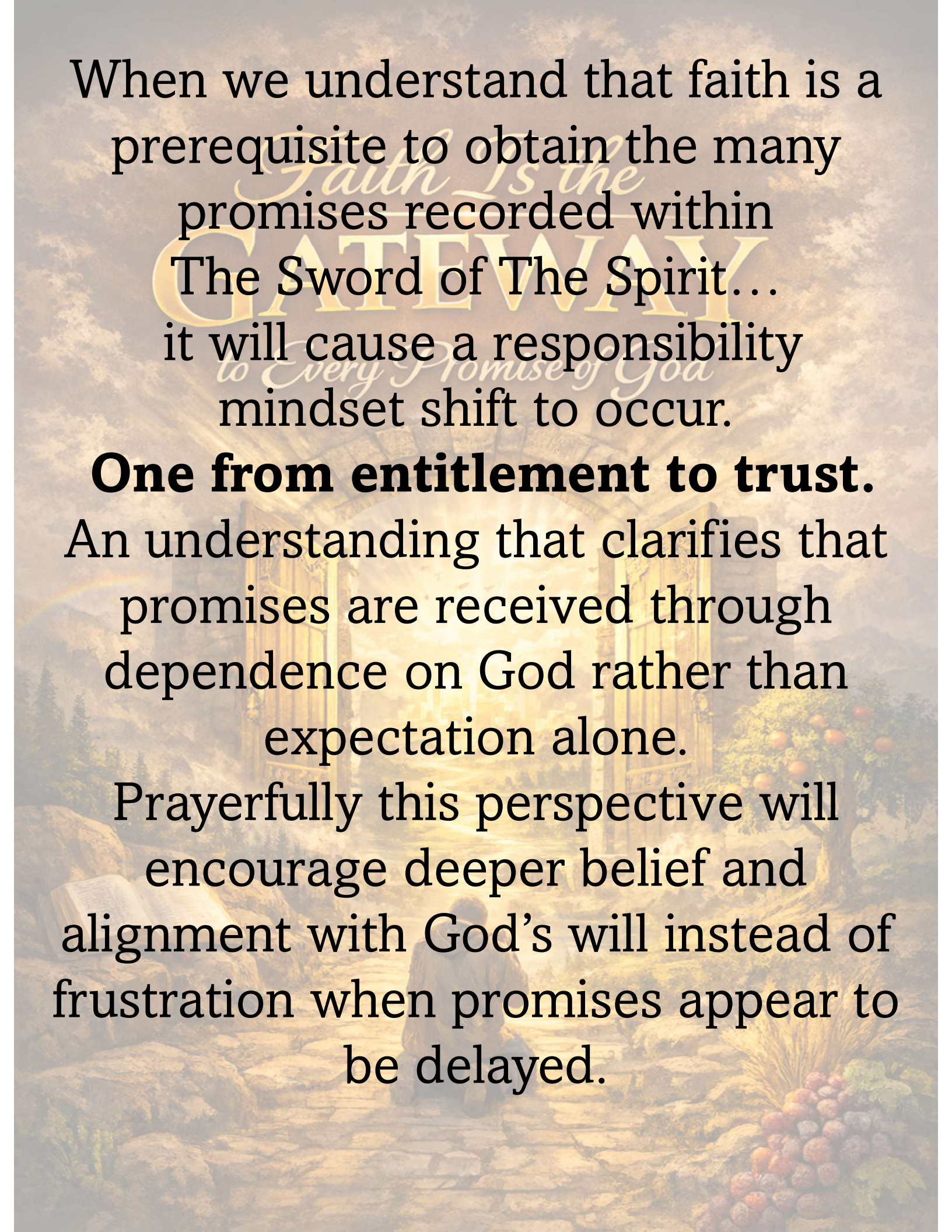
Our intent is to foster a favorable atmosphere where participants feel welcomed to study, learn and grow at their own pace.

Thank you for taking this journey along with us here at  
Women As Treasure ®

## **Now for Session Three**

*Faith Is the*  
**GATEWAY**  
*to Every Promise of God*



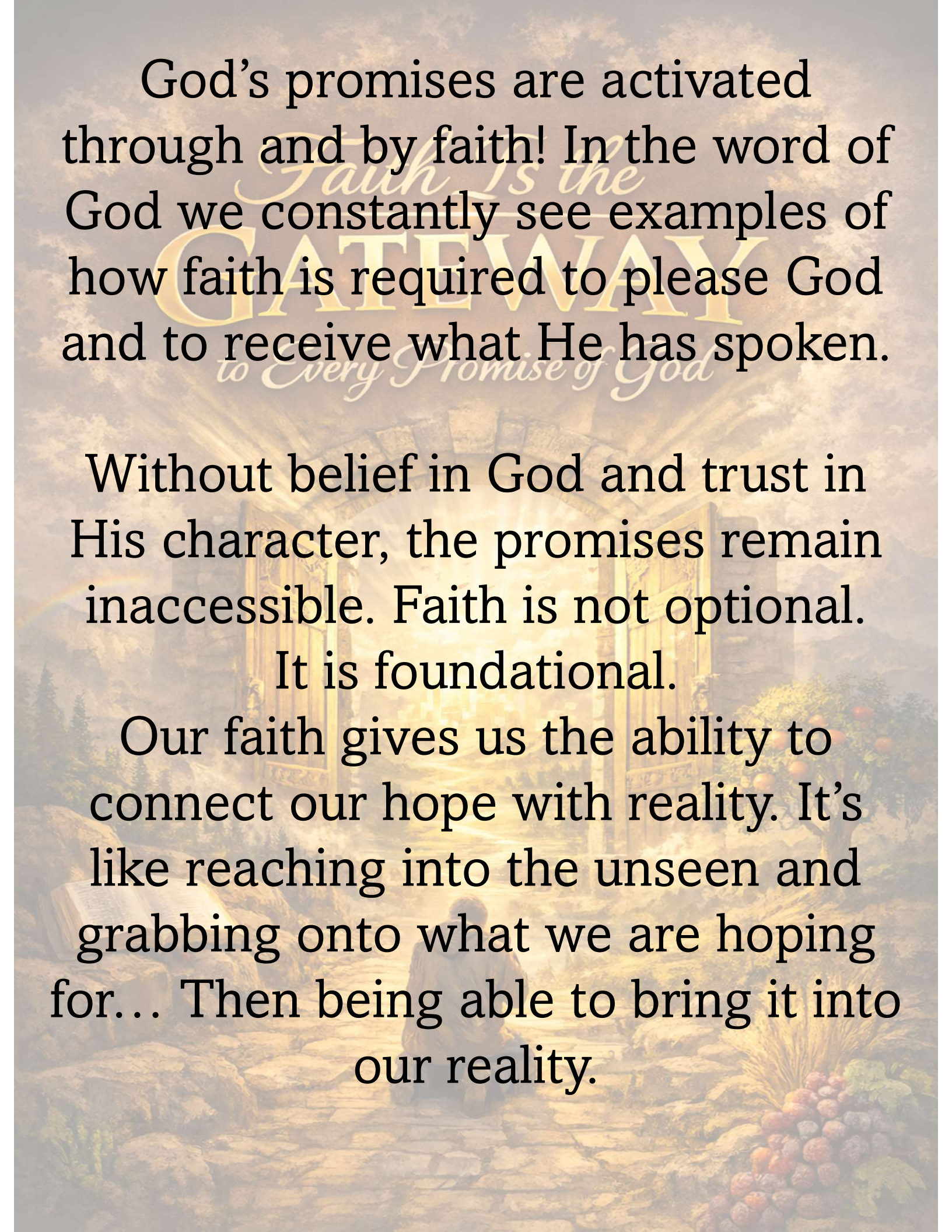


When we understand that faith is a prerequisite to obtain the many promises recorded within *Faith Is the* **GATEWAY** *to Every Promise of God* The Sword of The Spirit... it will cause a responsibility mindset shift to occur.

**One from entitlement to trust.**

An understanding that clarifies that promises are received through dependence on God rather than expectation alone.

Prayerfully this perspective will encourage deeper belief and alignment with God's will instead of frustration when promises appear to be delayed.



God's promises are activated through and by faith! In the word of God we constantly see examples of how faith is required to please God and to receive what He has spoken.

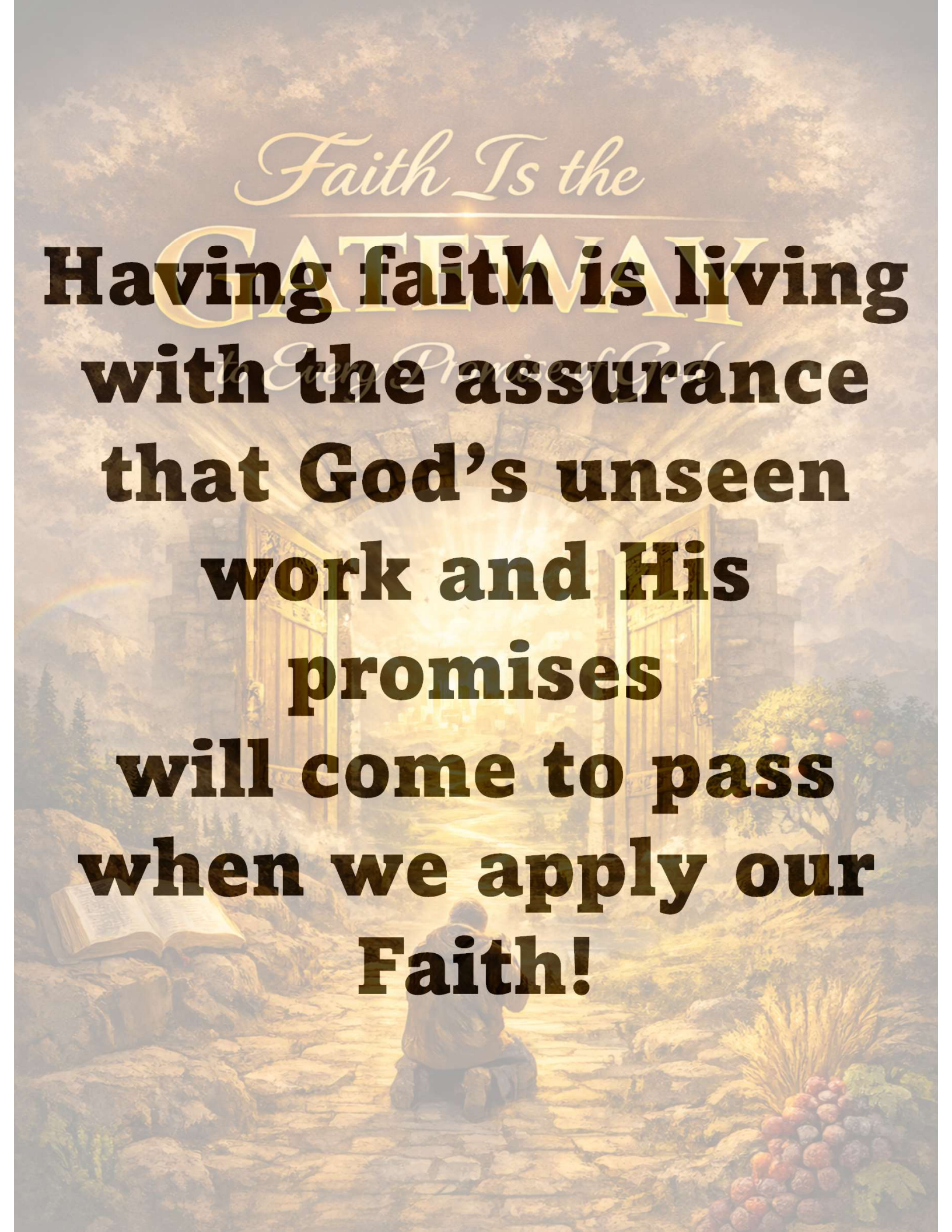
Without belief in God and trust in His character, the promises remain inaccessible. Faith is not optional.

It is foundational.

Our faith gives us the ability to connect our hope with reality. It's like reaching into the unseen and grabbing onto what we are hoping for... Then being able to bring it into our reality.

*Faith Is the*

**GATEWAY**  
*to Every Promise of God*  
**Having faith is living  
with the assurance  
that God's unseen  
work and His  
promises  
will come to pass  
when we apply our  
Faith!**



# **REFLECTION QUESTION**

In your own words answer this question...

How does understanding faith as a prerequisite change the way you view the promises of God in your own life?

---

---

---

# ***This Month's Quiz***



1. When you face a situation that feels bigger than you, what does it look like for you to turn your attention to God instead of trying to solve it on your own? \_\_\_\_\_

---

---

2. King Jehoshaphat said, “We do not know what to do, but our eyes are on you.” Can you identify an area in your life where you need to shift your focus back to God and trust Him fully? \_\_\_\_\_

---

---

3. How do you respond when God asks you to wait instead of act, especially when everything around you is pressuring you to do something? \_\_\_\_\_

---

4. What does it mean to you to worship and thank God before you see the outcome, and how can you practice that kind of faith in your daily life? \_\_\_\_\_

---

5. Can you recall a time when God worked on your behalf in a way you could not have done yourself, and how can that memory strengthen your trust in His promises today? \_\_\_\_\_

---

6. What did King Jehosophat do in 2 Chronicles 20 that was unusual?

---

---

7. How do we access the promises of God? \_\_\_\_\_

---

8. Read Hebrews chapter 11

9. If you haven't already, memorize Hebrews 11:1

10. BONUS: What is Hebrews chapter 11 often referred to? \_\_\_\_\_

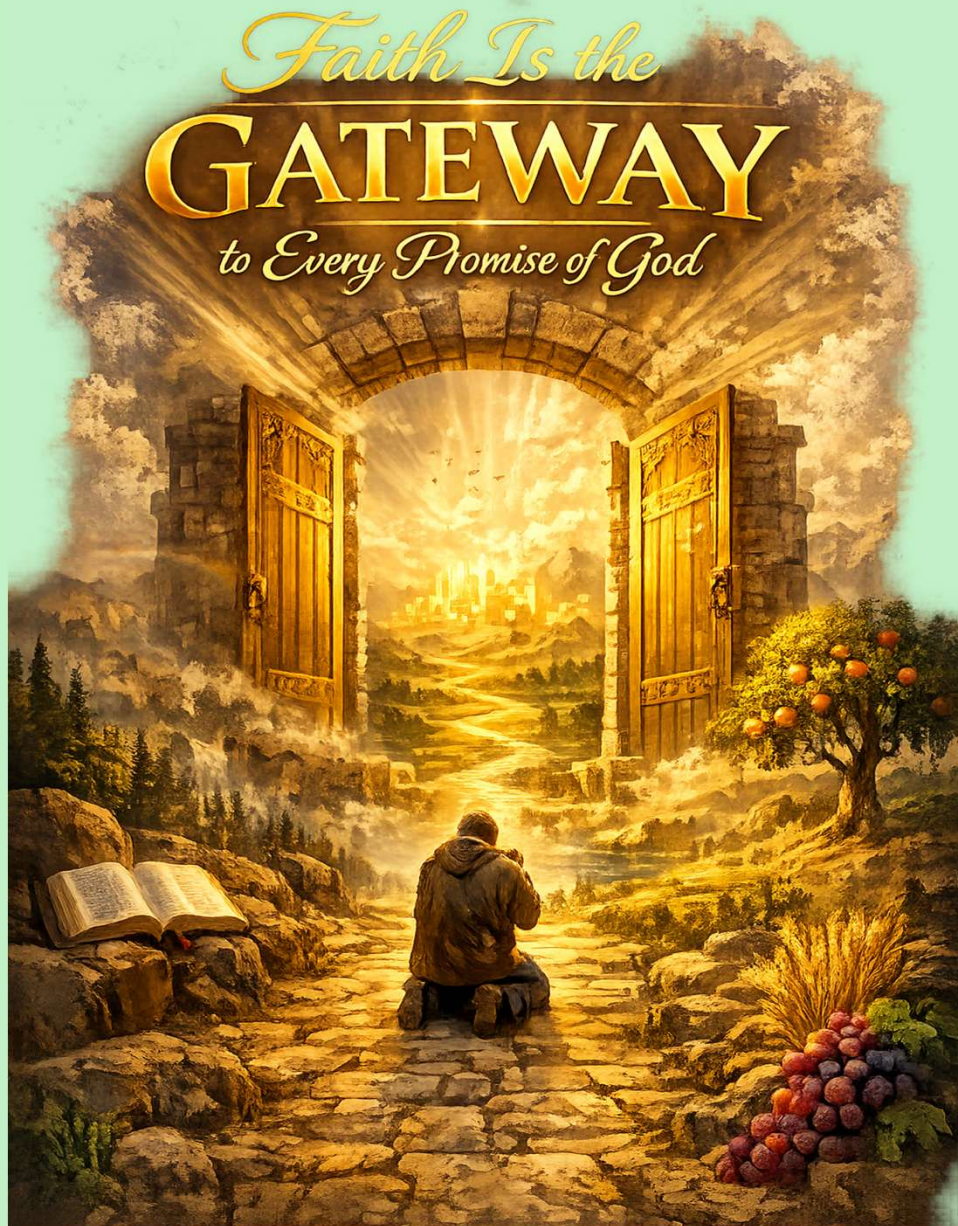
---

# **Answers To Last Month's Quiz**

## ***Training With the Sword!***

- 1. B. To use it with precision and strength.**
- 2. B. The Holy Spirit**
- 3. A. Repetition and meditation on the Word.**
- 4. B. To equip believers for every good work.**
- 5. False**
- 6. False**
- 7. Have a relationship with Jesus**
- 8. Understand the personality, and character of Jesus**
- 9. He had not trained in the armor**
- 10. Malachi 3:10**

# REMEMBER



***See You All Next Month!***