



TNE AGRI GROUP AFRICA

# Company Profile

Investing in The African Green



[www.tneagrigrp.co.za](http://www.tneagrigrp.co.za)



# Company Profile

Investing in The African **Green**

# TABLE OF CONTENT



<b>1. Executive Summary</b> .....	<b>04</b>
<b>2. Vision, Mission &amp; Purpose</b> .....	<b>04</b>
<b>3. The Opportunity &amp; Rationale</b> .....	<b>05</b>
<b>4. Integrated Operating Model: ABV – ABH – AA</b> .....	<b>05</b>
<b>5. Leadership &amp; Team</b> .....	<b>06</b>
<b>6. Implementing Partners &amp; Technical Team</b> .....	<b>09</b>
<b>7. Services</b> .....	<b>10</b>
<b>8. Social Impact &amp; CSI Implementation</b> .....	<b>11</b>
<b>9. Projects</b> .....	<b>12</b>
<b>10. AVE AGRI FlagShip Project – <i>Developing Food Networks in Africa</i></b> .....	<b>13</b>
<b>11. AVE Production &amp; Enterprise Pipeline</b> .....	<b>14</b>
<b>12. Farmer Onboarding &amp; Development Programme</b> .....	<b>15</b>
<b>13. Geographic Footprint</b> .....	<b>16</b>
<b>14. Programme Implementation Progress</b> .....	<b>17</b>
<b>15. Programme Implementation Progress Continues</b> .....	<b>18</b>
<b>16. Impact Focus</b> .....	<b>19</b>
<b>17. Partnerships &amp; Ecosystem</b> .....	<b>19</b>
<b>18. Investment &amp; Partnership Opportunities</b> .....	<b>19</b>
<b>Conclusion</b> .....	<b>20</b>



# Executive Summary



TNE Agri Group (Pty) Ltd is an integrated agribusiness development, trade, and advisory company focused on strengthening food systems and advancing green-economy solutions across Africa.

Operating across the full agricultural value chain, the Group connects **household food security, farmer development, aggregation, agro-processing, enterprise creation, and market access** into coordinated, scalable systems. Through its structured **Agribiz Village (ABV), Agribiz Hub (ABH), and Agribiz Ventures (AA)** framework, TNE Agri Group delivers practical, impact-driven solutions that support sustainable agriculture, enterprise development, and inclusive economic growth.

The Group works with communities, investors, corporates, development partners, governments, and research institutions to design and implement programmes that deliver measurable social, environmental, and economic outcomes.

## 2. Vision, Mission & Strategic Purpose



### Vision

To see Africa's land, people, and systems aligned in building resilient food systems, thriving green-economy enterprises, and dignified livelihoods.



### Mission

To design, implement, and scale integrated agribusiness and green-economy solutions that strengthen food security, build enterprise capacity, and deliver measurable impact across Africa.



### Purpose

TNE Agri Group positions itself as a systems integrator, bridging grassroots production, aggregation and processing, enterprise development, and market participation to unlock sustainable agricultural growth.



### 3. The Opportunity & Rationale



Agriculture remains central to Africa’s food security, employment, and economic development. However, many initiatives fail to scale due to fragmentation, weak aggregation, limited enterprise readiness, and poor market integration.

TNE Agri Group addresses these challenges through a systems-based operating model that connects:

- Households and smallholder farmers
- Aggregation and processing infrastructure
- Enterprises and green-economy ventures
- Local, regional, and institutional markets

This approach enables productivity, coordination, resilience, and long-term sustainability.



### 4. Integrated Operating Model: ABV – ABH – AA

#### Agribiz Village (ABV)

##### Households & Communities

ABV focuses on household and community-level production, equipping families and growers with practical food production skills, resource awareness (water, waste, energy), and basic enterprise thinking.

##### Outcomes:

- Improved household food security
- Skills transfer and dignity
- Entry into local food systems

#### Agribiz Hub (ABH)

##### Aggregation, Processing & Coordination

ABH structures partner farms and processing sites as aggregation hubs providing coordination, quality control, storage, logistics, and mentoring.

##### Outcomes:

- Reduced post-harvest losses
- Economies of scale and compliance
- Market-ready producers
- Stronger local and regional food economies

#### Agribiz Ventures (AA)

##### Enterprise & Green Economy

AA supports the creation and scaling of green-economy enterprises across agriculture, agro-processing, circular economy, water, and energy.

##### Outcomes:

- Enterprise development and job creation
- Strengthened value chains
- Long-term economic sustainability

# 5. Leadership & Team



**Thabo Mahlobo**  
**CEO**

Nation-building strategist and Executive Advisor for agriculture across Africa. Drives the Group's vision, strategy, and stakeholder relations, ensuring alignment between social transformation and enterprise sustainability.



**Nthabiseng Mahlobo**  
**MD**

20+ years in people development and learning design. Holds a National Diploma in Computer Systems Engineering. Leads training, digital learning, and community development programmes.



**Opheleleyo Qwabe**  
**Non Executive Director**

MSA. (Master of Sustainable Agriculture) and Agricultural Economics (UFS). Leads and oversees Group operations, environmental stewardship, and climate-smart innovations, ensuring alignment between social transformation and enterprise sustainability.



**Boitumelo Mlambo**  
**CFO**

BCom (Economics & Econometrics, UJ) and BA (Hons) Psychology (Wits). Oversees financial systems, donor reporting, and project compliance with integrity and precision.



**Phakamile Nzuza,  
Soil Scientist &  
Agronomist  
(Projects Coordinator)**

BSc Agriculture and PGCE (Postgraduate Certificate in Education) (UKZN). Focused on soil fertility, land restoration, and sustainable farming training methodologies



**Dr. Jeremiah Hlahla,  
Agricultural Scientist  
& Agronomist**

PhD in Botany (UFS). Specialist in crop stress biology and plant resilience for climate adaptation and productivity enhancement



**Noxolo Sibiya  
Agricultural Advisor &  
Assistant Project Manager**

She holds a BSc Honours from the University of KwaZulu-Natal. She brings practical experience in farmer support, climate-smart agriculture, and project implementation, having worked with the Department of Agriculture and Mahlathini Development Foundation. Noxolo specialises in field-based advisory, training facilitation, data collection, and monitoring and evaluation, supporting smallholder farmers to improve productivity and adopt sustainable practices.

She is also a registered Candidate Natural Scientist with SACNASP, and plays a key role in ensuring that agricultural programmes are effectively implemented, monitored, and aligned with both technical standards and community needs.



### **Itumeleng Mbulayeni**

#### **Executive Assistant to CEO & Communications Coordinator**

She supports executive operations, organisational reporting, and stakeholder communication. With a background in draughting and technical design, she brings strong attention to detail and visual presentation skills to the development of reports, proposals, and communication to partners, funders, and stakeholders.

### **Keamohetswe Mongwe**

#### **Executive Assistant to MD , Learning Systems & AgriTech Assistant**

She supports digital platforms including LMS, farmer databases, and data systems that enhance training delivery and programme tracking. With skills in HTML, CSS, SQL, and Python, she contributes to building efficient, scalable systems and is passionate about applying technology to strengthen agricultural development and AgriTech solutions.

*Grade 8/9, Author of  
NoluGrow Book ,  
Passionate advocate for  
eco-literacy and  
sustainability among  
youth. Leads school-  
based environmental  
awareness campaigns  
under the "Every Family,  
A Farmer" initiative*

### **Noluthando Mahlobo Brand Ambassador**



# 6. Implementing Partners & Technical Team

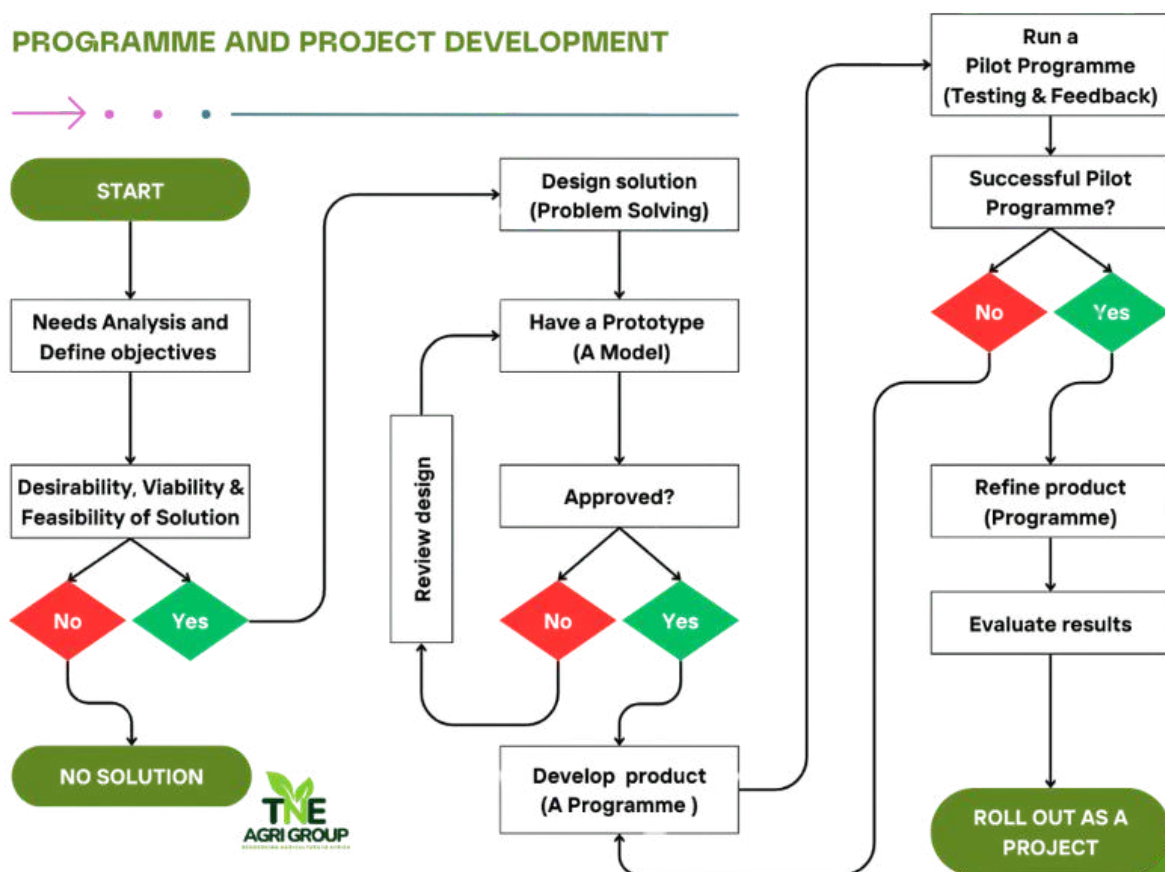


TNE Agri Group is led by a multidisciplinary team with experience across agriculture, enterprise development, project implementation, finance, and social innovation.

The Group combines **on-the-ground implementation expertise** with **systems thinking and strategic oversight**, supported by an extended network of advisors, specialists, and implementing partners.

Process diagram:

## PROGRAMME AND PROJECT DEVELOPMENT



# 7. Services



 <b>Research &amp; Training</b> Agricultural research, feasibility studies, farmer training, curriculum development, and digital learning.	 <b>Farm Planning &amp; Production</b> Farm design and production planning, climate-smart and regenerative systems.	 <b>Agronomy &amp; Technical Advisory</b> Soil health, crop and livestock systems, quality assurance, and risk management.	 <b>Project &amp; Programme Management</b> End-to-end programme design, coordination, monitoring, evaluation, reporting.	 <b>Trade &amp; Market Development</b> Aggregation models, off-take coordination, market access, and trade facilitation.	 <b>Consulting &amp; Advisory</b> Agribusiness strategy, systems design, governance support, and public-private partnerships.
--	---	--	--	--	---

TNE Agri Group provides end-to-end services across planning, implementation, and advisory:

## 1. Research & Training

Agricultural research, feasibility studies, farmer training, curriculum development, and digital learning.

## 2. Farm Planning & Production

Farm design, production planning, climate-smart and regenerative systems.

## 3. Agronomy & Technical Advisory

Soil health, crop and livestock systems, quality assurance, and risk management.

## 4. Project & Programme Management

- Programme design, implementation, monitoring, evaluation, and reporting.

## 5. Trade & Market Development

- Aggregation models, off-take coordination, market access, and trade facilitation.

## 6. Consulting & Advisory

- Agribusiness strategy, systems design, governance support, green-economy advisory, and public-private partnerships.



# 8. Social Impact & CSI Implementation



**TNE Agri Group Foundation**  
(Non-Profit & CSI Implementing Partner)

TNE Agri Group Foundation serves as the Group’s social-impact and CSI implementing partner, ensuring a clear separation between commercial activities and public-benefit programmes.

All programmes are delivered using a **Theory of Change framework**, ensuring accountability, transparency, and measurable outcomes.

## 8.1. Social Impact & CSI Programmes

### 1.ABV Family Programme

Strengthening household and community food security through practical production skills, resource management, and dignity-centred livelihoods.

### 2.NoluGrow Programme

Introducing children and youth to agriculture through education, growing initiatives, environmental awareness, and agri-entrepreneurship pathways.

### 3.Invest in Agri South Africa Programme

Supporting inclusive agricultural value chains through farmer development, aggregation, enterprise readiness, and market access.

### 4.Invest in Agri Namibia Programme

Adapting the Invest in Agri model to Namibia’s agricultural context, supporting sustainable production, enterprises, and trade.

### 5.AgriVillage Food Network SA Programme

Building integrated local and regional food networks linking households, farmers, hubs, enterprises, and markets to strengthen food security and economic participation.

### 6.The AgriVillage Food Network Africa Programme

A continental initiative focused on connecting households, farmers, aggregation hubs, enterprises, and markets into integrated and resilient food networks across Africa.





# 9. Projects

<p><b>Environment &amp; Waste</b> (Circular Economy)</p>  <p>Composting, soil regeneration, land rehabilitation, organic input production.</p>	<p><b>Food Production &amp; Nutrition</b></p>  <p>Climate-smart vegetables and herbs production, household gardens.</p>	<p><b>Water Security</b></p>  <p>Rainwater harvesting, storage tanks, efficient irrigation systems.</p>	<p><b>Renewable Energy</b></p>  <p>Solar irrigation, solar cold rooms, solar dryers.</p>	<p><b>Food Network Development</b></p>  <p>Aggregation hubs, storage, logistics coordination, market linkages.</p>
---	--	--	--	---

### 1.Environment & Waste (Circular Economy)

Composting, soil regeneration, land rehabilitation, organic input production.

### 2.Food Production & Nutrition

Climate-smart vegetables and herbs production, household gardens.

### 3.Water Security

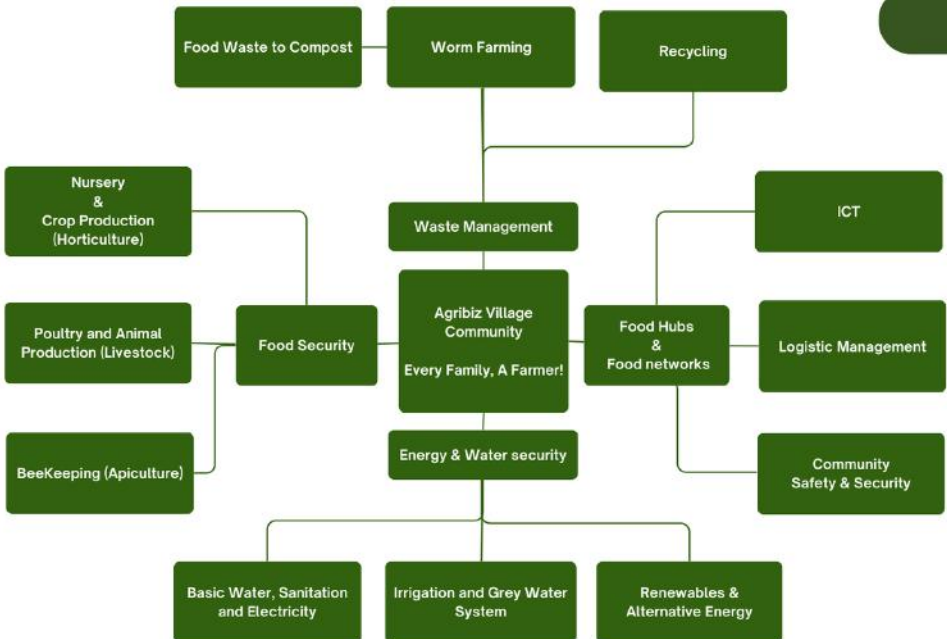
Rainwater harvesting, storage tanks, efficient irrigation systems.

### 4.Renewable Energy

Biogas , Biomass, Solar irrigation, solar cold rooms, solar dryers.

### 5.Food Network Development

Aggregation hubs, storage, logistics coordination, market linkages.



**ABV MODEL**



# 10.AVE FLAGSHIP PROJECT

## DEVELOPING FOOD NETWORKS IN AFRICA

(AgriVillage Food Network Africa Programme)



### 10.1 Project Overview

The **Developing Food Networks in Africa Flagship Project** is a continental initiative of **TNE Agri Group Africa** aimed at establishing **integrated, decentralised food networks** that connect households, smallholder farmers, medium-scale producers, aggregation hubs, green enterprises, and markets into coordinated and resilient food systems.

The project is implemented through TNE Agri Group Africa's **AgriVillage Economy (AVE) Model** and its Integrated Operating Framework:

#### **AgriVillage Blocks (ABV) → AgriVillage Hubs (ABH) → AgriVillage Accelerators (AA)**

Rather than treating production, aggregation, enterprise development, and markets as separate activities, the project integrates the **entire agricultural value chain** into one operating ecosystem that drives food security, job creation, enterprise development, and green-economy growth.

### 10.2. Project Goal

To build inclusive, climate-resilient food networks that strengthen household food security, increase farmer incomes, create green jobs, regenerate ecosystems, and stimulate local economies across Africa.

### 10.3. Strategic Objectives

- Organise household and community food production into structured local systems
- Onboard medium-scale farmers capable of producing at 1–3+ hectare scale
- Establish aggregation, storage, and cold-chain infrastructure
- Develop green agri-ventures providing services and value addition
- Link producers to local, regional, and institutional markets

#### **ABV – AgriVillage Blocks**

Household and community growers producing at approximately **1,000 square metres**, focused on food security, nutrition, and entry-level enterprise development.

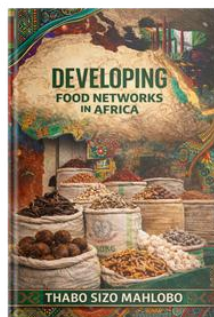
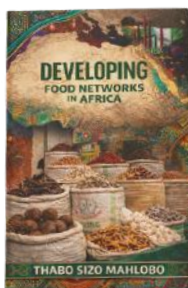
#### **ABH – AgriVillage Hubs**

Medium-scale farmers producing at **1–3+ hectares**, supplying aggregation hubs and anchoring local food networks.

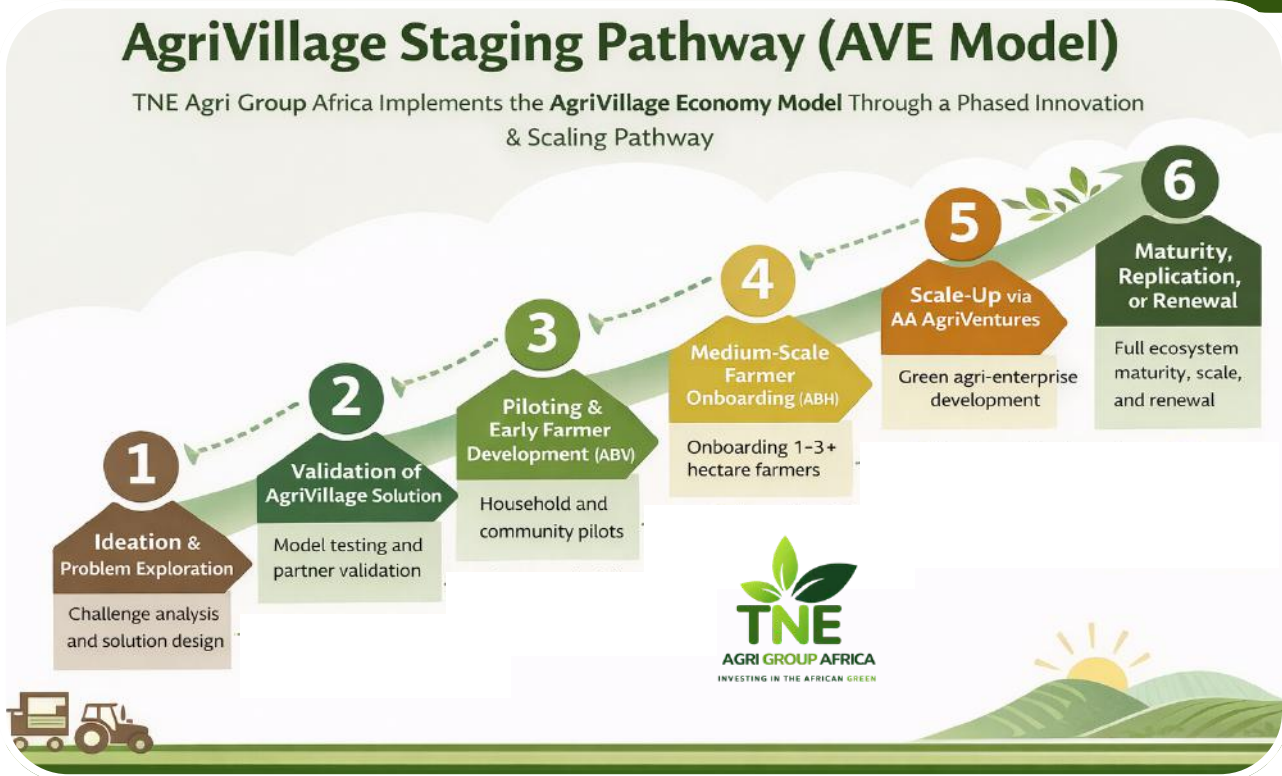
#### **AA – AgriVillage Accelerators (AgriVentures)**

Green enterprises delivering compost, seedlings, aggregation, logistics, solar irrigation, cold-chain, and processing services.

This pipeline creates a **graduation pathway** from subsistence production to commercial farming and enterprise participation.



# 11. AVE Production & Enterprise Pipeline



## AVE IMPLEMENTATION STAGES

### Stage 1 – Ideation & Problem Exploration

Identification and deep analysis of systemic challenges in food security, markets, environment, water, and rural livelihoods, and design of integrated AgriVillage solutions.

### Stage 2 – Validation of the AgriVillage Solution

Testing and validating the AVE Model with partners and early adopters, refining tools, training approaches, and implementation frameworks.

### Stage 3 – Piloting & Early Farmer Development (ABV Model)

Piloting the model at household and community level through AgriVillage Blocks (ABV), focusing on food security, training, and entry-level enterprise.

### Stage 4 – Medium-Scale Farmer Onboarding (ABH Model)

Onboarding farmers capable of producing at 1–3+ hectare scale to supply aggregation hubs and anchor local food networks.

### Stage 5 – Scale-Up via AgriVillage Accelerators (AA – AgriVentures)

Establishing green agri-enterprises that provide services such as composting, seedlings, logistics, solar solutions, cold chain, and processing.

### Stage 6 – Maturity, Replication & Renewal

Consolidation of mature sites, replication into new locations, and renewal or expansion of successful AgriVillage clusters.



# 12. Farmer Onboarding & Development Programme



The TNE Agri Group Africa **Farmer Onboarding & Development Programme** provides a structured pathway for households, small-scale growers, and medium-scale farmers to be onboarded into the **AgriVillage Economy (AVE) Model** and supported to grow into productive, market-oriented agripreneurs.

Through our AgriVillage Blocks (ABV) and AgriVillage Hubs (ABH) platforms, farmers are introduced to climate-smart production systems, regenerative agriculture practices, and commercial farming disciplines. The programme intentionally supports women, youth, men, and persons with disabilities, creating inclusive opportunities across rural and peri-urban communities.

Farmers receive practical, field-based training and continuous mentoring, enabling them to improve yields, manage costs, strengthen farm businesses, and progressively integrate into local and regional food networks.

## We are committed to equipping participating farmers with foundational and applied skills in:

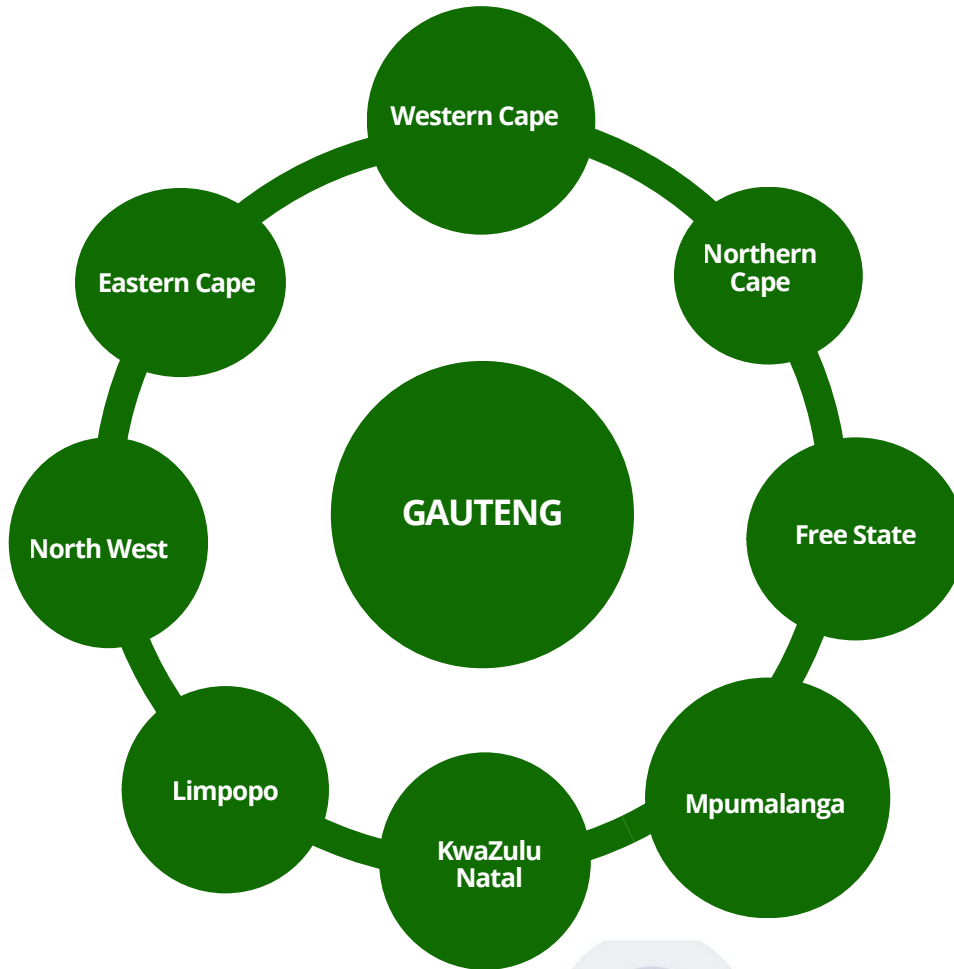
- Climate-smart and regenerative crop production
- Soil health, water management, and input efficiency
- Farm planning and production scheduling
- Basic agribusiness and financial management
- Leadership, record-keeping, and cooperative participation

## What Participating Farmers Will Be Doing

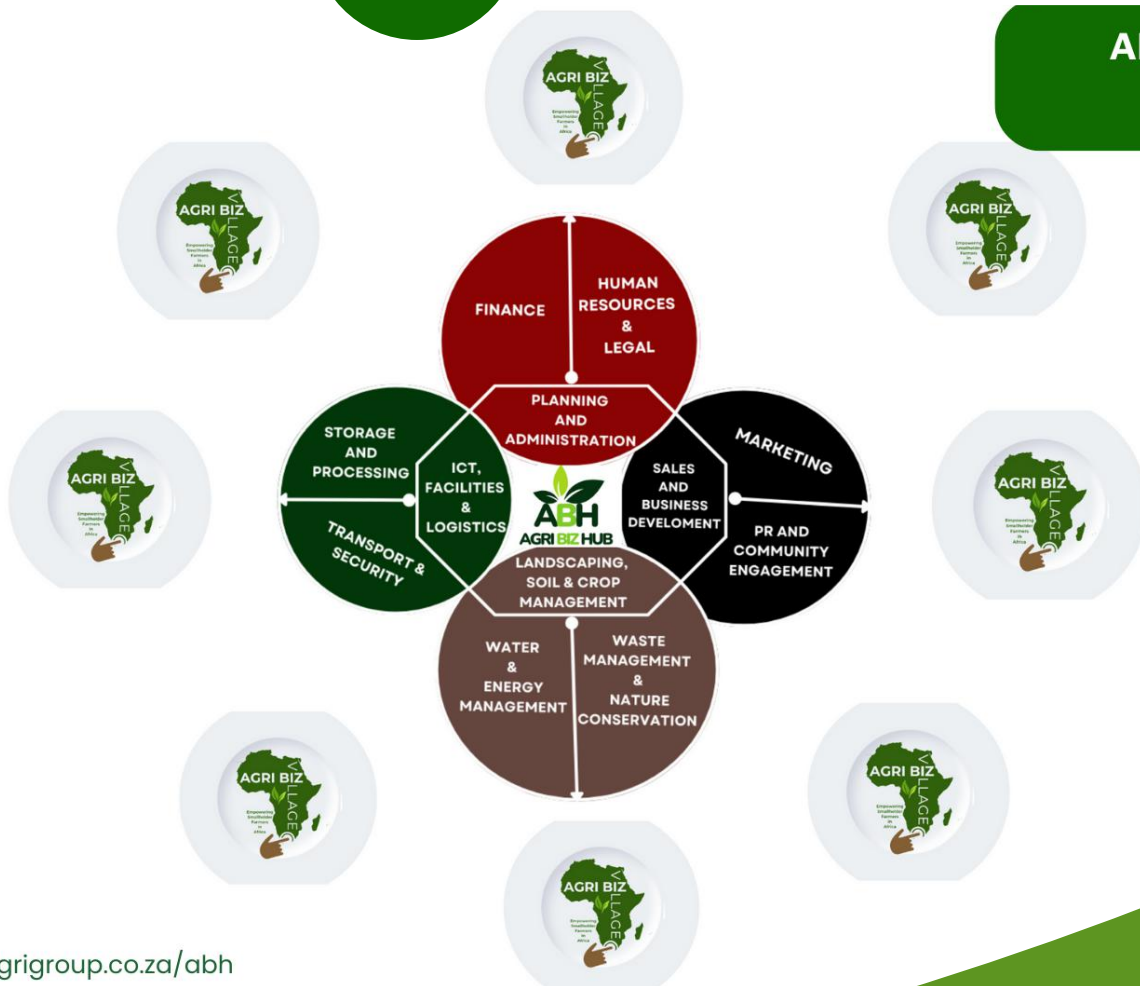
- Attend regular training and mentoring sessions with TNE Agri Group facilitators and technical advisors
- Implement approved production plans on their allocated plots or farms
- Spend structured time each month on practical farm activities aligned to their production pathway
- Participate in farmer learning exchanges, field days, and demonstration site visits
- Contribute to local aggregation and food network activities
- Engage in selected TNE Agri Group Africa conferences, workshops, and knowledge-sharing platforms



# 13. Geographic Footprint



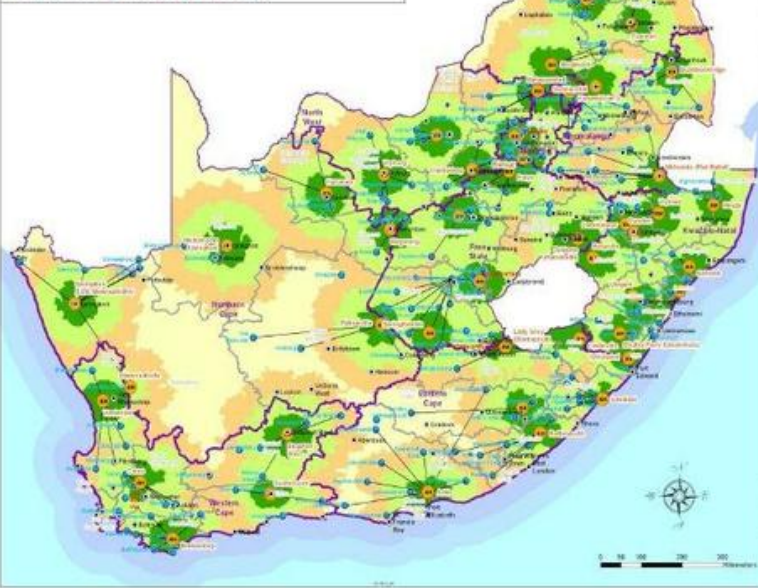
## ABH MODEL FARMS



# 14. Programme Implementation Progress

Country	Province / Area	AVE Stage	Farmers	Avg Area / Farmer	Total Area	Crops Type	Commodity Sub-Categories
South Africa	Kwa Zulu-Natal	Stage 4-5	100	2 ha	200 ha	Spinach, lettuce, cabbage, tomatoes, peppers, onions, carrots, beetroot, basil, coriander	Leafy, Fruiting, Roots, Herbs
South Africa	Gauteng	Stage 4-5	100	2 ha	200 ha	Spinach, lettuce, cabbage, tomatoes, peppers, onions, carrots, beetroot, basil, coriander	Leafy, Fruiting, Roots, Herbs
South Africa	Free State	Stage 3	100	0.1 ha	10 ha	Spinach, kale, tomatoes, onions, carrots, herbs	Leafy, Fruiting, Roots, Herbs
South Africa	Mpumalanga	Stage 3	100	0.1 ha	10 ha	Spinach, lettuce, tomatoes, onions, herbs	Leafy, Fruiting, Roots, Herbs
South Africa	Limpopo	Stage 3	100	0.1 ha	10 ha	Spinach, cabbage, tomatoes, onions, herbs	Leafy, Fruiting, Roots, Herbs
South Africa	North West	Stage 3	100	0.1 ha	10 ha	Spinach, tomatoes, carrots, onions, herbs	Leafy, Fruiting, Roots, Herbs
South Africa	Northern Cape	Stage 3	100	0.1 ha	10 ha	Spinach, cabbage, tomatoes, onions, herbs	Leafy, Fruiting, Roots, Herbs

South Africa - Locality of Agrihubs and Farmer Production Support Units (FPSU)





# 15. Programme Implementation Progress cont.

South Africa	Eastern Cape	Stage 3	100	0.1 ha	10 ha	Spinach, kale, tomatoes, carrots, herbs	Leafy, Fruiting, Roots, Herbs
South Africa	Western Cape	Stage 3	100	0.1 ha	10 ha	Spinach, lettuce, tomatoes, carrots, herbs	Leafy, Fruiting, Roots, Herbs
Namibia	Windhoek	Stage 3	100	0.1 ha	10 ha	Spinach, tomatoes, onions, carrots, herbs	Leafy, Fruiting, Roots, Herbs
Lesotho	Maseru	Stage 3	100	0.1 ha	10 ha	Spinach, cabbage, onions, carrots, herbs	Leafy, Fruiting, Roots, Herbs
Rwanda	Kigali	Stage 3	100	0.1 ha	10 ha	Spinach, tomatoes, onions, carrots, herbs	Leafy, Fruiting, Roots, Herbs
Ghana	Accra	Stage 2	100	—	—	To be finalised	Leafy, Fruiting, Roots, Herbs
Kenya	Nairobi	Stage 2	100	—	—	To be finalised	Leafy, Fruiting, Roots, Herbs
Ethiopia	Addis Ababa	Stage 2	100	—	—	To be finalised	Leafy, Fruiting, Roots, Herbs
Zambia	Lusaka	Stage 2	100	—	—	To be finalised	Leafy, Fruiting, Roots, Herbs
Malawi	Lilongwe	Stage 2	100	—	—	To be finalised	Leafy, Fruiting, Roots, Herbs



# 16. Impact Focus

## 1. Household & Community Impact

- Improved food security and nutrition
- Skills development and dignity
- Participation in local food networks

## 2. Local Economy Impact

- Organised producer systems
- Reduced losses and improved quality
- Stronger local and regional food economies

## 3. Enterprise & Green Economy Impact

- Enterprise development and job creation
- Strengthened value chains
- Sustainable economic participation

# 17. Partnerships & Ecosystem

TNE Agri Group operates through a multi-stakeholder ecosystem that includes:

- Partner communities and growers
- Partner farms and processing hubs
- Research and training institutions
- Technical and production partners
- Investors, donors, DFIs, and CSI partners
- Government and public-sector stakeholders

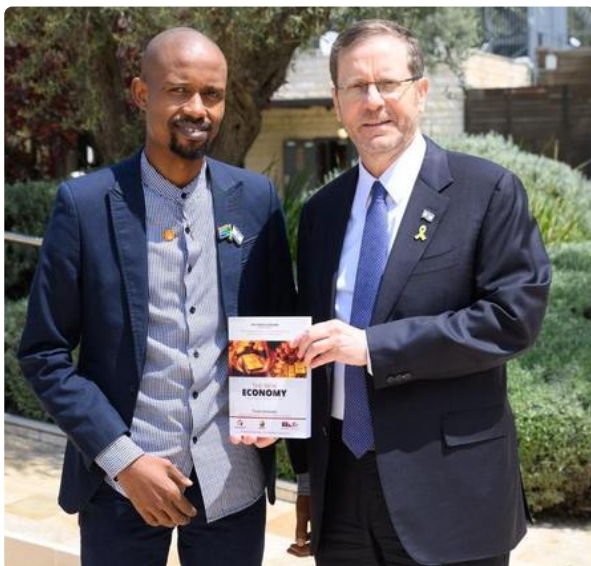
This ecosystem approach enables scale, resilience, and shared value creation.

# 18. Investment & Partnership Opportunities

TNE Agri Group partners with investors and stakeholders to:

- Scale integrated agribusiness systems
- Develop aggregation and processing infrastructure
- Support enterprise and green-economy ventures
- Deliver high-impact CSI and development programmes

Opportunities include **programme funding, blended finance, equity partnerships, project co-development, and strategic collaboration.**



# Conclusion



TNE Agri Group (Pty) Ltd is a systems-driven agribusiness partner committed to strengthening food systems, enabling enterprise development, and advancing sustainable agriculture across Africa.

Investing in the African Green reflects a long-term commitment to people, land, systems, and Africa's shared future.



## Get in Touch with us



We look forward to keeping in touch with you and discussing how we can grow together towards a sustainable agricultural future.



**Phone**  
+2774-173-8108



**Address**  
Herman Street, Harmelia Ext 2,  
Germiston, Gauteng 1429



**Website**  
[www.tneagrigrp.co.za](http://www.tneagrigrp.co.za)



**Email**  
[Office@tneagrigrp.co.za](mailto:Office@tneagrigrp.co.za)



*Nolu Grow*

— FARM S —

GROWN NATURALLY • HARVESTED FRESH



**TNE**

**AGRI GROUP AFRICA**

**INVESTING IN THE AFRICAN GREEN**

