

RAZNY
JEWELERS

Founded in 1951

RAZNY

MAGAZINE
2023/2024





PATEK PHILIPPE
GENEVE

BEGIN YOUR OWN TRADITION



YOU NEVER ACTUALLY OWN A PATEK PHILIPPE.
YOU MERELY TAKE CARE OF IT FOR THE NEXT GENERATION.



CALATRAVA WEEKLY CALENDAR REF. 5212A





TANK FRANÇAISE

Cartier

contents

6 | *From Our Family*

9 | *Only Natural Diamonds*

11 | *In the Press*

13 | *Rolex: The 24 Hours of Le Mans*

19 | *Here Comes the Sun*

21 | *Patek Philippe: Aquanaut Luce*

23 | *The Edit*

27 | *The Art of Everyday Living*

35 | *Refined by Razny*

39 | *Patek Philippe:
The New Colors of the Calatrava*

41 | *Diamond Education*

43 | *Wedding Band Weekend*

47 | *Breitling's Tribute to Travel*

49 | *Fred Leighton*

53 | *Color My World*

57 | *Services*

On Our Cover: Christine Razny-Porter, third-generation owner of Razny Jewelers, is photographed in front of our Highland Park location. She is wearing pieces from our collections, including Refined by Razny. Her timepiece is the Ref. 7300/1200A Twenty-4 by Patek Philippe.
Above: 19.82 tw round and pear-cut diamond lariat necklace set in 18K YG by Rahaminov Diamonds.

Ingrid Razny, Editorial Director • Christine Razny-Porter, Editorial Director • Karina Bogan, Senior Copywriter
Sarah Wambach, Art Director • Taylor Dykstra, Creative Director • Suzette Odell, Creative Director
Lenny Li, Still Photography & Editing • Katrina Wittkamp, Model Photography & Editing
Please contact Razny Jewelers for current pricing and availability of products shown in this issue.

©2023 Razny Jewelers



**NATIONAL
Jeweler**

2023 RETAILER
HALL OF FAME

WATCHPRO

2023 INDEPENDENT
WATCH RETAILER OF THE YEAR
AWARD WINNER

WATCHPRO

TOP 100 RETAIL
POWER PLAYERS

A LETTER FROM THE RAZNY FAMILY

As we gather our thoughts and reflections for this year's annual magazine, it warms our hearts to see how far we've come since our inception over 70 years ago. The trust of Chicago area families has been our secret power from the beginning. Your unwavering commitment to natural diamonds, inspired jewelry, and fine Swiss timekeeping has allowed us to create a legacy that transcends time. You've inspired us to continue capturing not only the quality and craftsmanship of eras gone by but also the aspirations of today's dreamers.

As we honor the past, we also look forward enthusiastically to the future. We are delighted to share that our flagship boutique in Addison, IL, will soon undergo a complete transformation to provide an even more immersive experience for our guests. The expanded space will be double the size of our current location, serving as a haven for collectors of luxury pieces, where history, elegance, and modernity seamlessly converge. We would not have the confidence to reach new heights like these without your unwavering support, for which we are forever grateful.

Time and again, you have celebrated life's most memorable moments with a visit to our stores. In our magazine's newest section, "In the Press," we highlight the publications and industry insiders who recognize Razny Jewelers as the place where Chicago couples get engaged, watch collectors find their dream timepiece, and diamond

lovers discover the world's brightest and most brilliant ethically sourced gems. 2023 saw the Razny family inducted into the Retailer Hall of Fame, a humbling achievement for anyone in our industry.

We are proud to be the only authorized dealer for Patek Philippe in a territory centered on Chicago that stretches across Illinois, Indiana, Iowa, and Wisconsin (220,000 square miles). WatchPro, the leading magazine for timepiece news, sat with Stan Razny to discuss the ever-changing landscape of the luxury watch market. Within this feature, we talk honestly about why family-owned independent jewelers provide unmatched value to clients and manufacturers.

Our family thanks WatchPro's insiders for naming Razny Jewelers Independent Watch Retailer of the Year in 2023. This honor recognizes our seven-decade-long dedication to the art of horology. It was a privilege to receive this award amongst key players in our industry at the inaugural WatchPro Awards in New York City.

As we forge ahead, we remain steadfast in our values of integrity, world-class artisanship, and unparalleled customer service. Your dreams and desires continue to inspire us, and we are committed to exceeding your expectations in every facet of our journey together. Thank you for being an integral part of our story. Here's to a future filled with brilliance, beauty, and boundless possibilities.



Razny Bespoke is an exclusive line of one-of-a-kind showstopping pieces paying homage to the custom creations for which Razny Jewelers is known, but with a twist of modern sensibilities. Each piece is made to order and designed with the diamond first in mind. The result is unique and timeless, the epitome of wearable art.



THANK YOU, BY THE WAY

Your **NATURAL DIAMOND** helps protect
the lives of millions of wild animals globally,
saving threatened species from extinction.

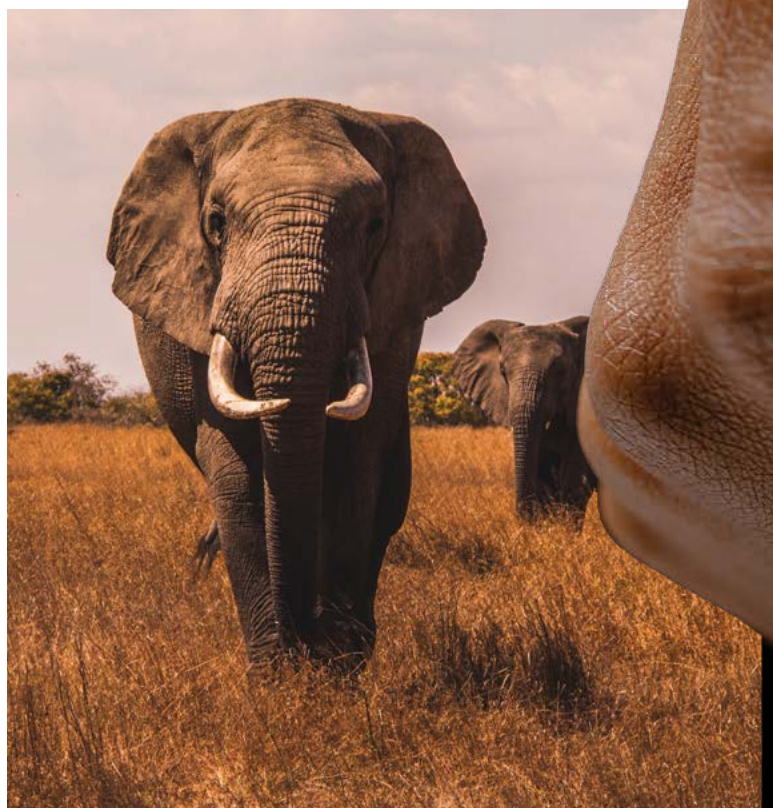
naturaldiamonds.com/thankyou



only
**NATURAL
DIAMONDS**
Natural Diamond Council

only NATURAL DIAMONDS

For over 70 years, Razny Jewelers has remained devoted to natural diamonds exclusively sourced from locations that prioritize people and the planet. By choosing our brilliant natural gems, you are supporting the communities that depend on this industry to provide for their families and achieve their dreams. These modern miracles formed deep within the earth's mantle also hold an enduring value beyond their monetary worth. The following four truths form the pillars of our dedication to genuine diamonds.



Origin & Traceability

Formed on average 1-3 billion years ago, one hundred or more miles below the ground's surface, a natural diamond is the oldest thing you will ever touch or own. Inclusions act as time capsules, trapping the secrets of our planet's formation with tremendous scientific accuracy. Our natural diamond collection can be traced to Southwest Africa, one of the only locations able to produce the most brilliant gems within an environment that exceeds international standards for ethics and trade.

Value

A real diamond is rare and finite, and no two are identical. Finding diamond deposits is like finding a needle in a haystack. Even rarer is it to discover a diamond that meets the qualification needed to become a Razny Diamond. Only these gems retain their inherent value over time, making them an investment and an heirloom, poised to pass down stories and memories for generations.

Sustainability

The diamond industry supports the livelihood of 10 million people globally, providing safe, high-quality jobs and development programs, infrastructure, businesses, and higher education to indigenous communities. In Namibia, we acquire diamonds by utilizing offshore industrial alluvial mining. We say that our diamonds are "from the earth and for the planet" because 83% of the water used in our diamond recovery is recycled, safeguarding thousands of tons of water. Our partners work with local governments and community leaders to nurture the reclamation process so that the land we mine returns to the natural landscape when work is complete. Strict regulations and government investment characterize this technique. These efforts ensure we preserve the ocean and terrain for our children and their children.

Symbolism

The value of natural diamonds goes far beyond their monetary price. Diamonds symbolize enduring love, celebrate milestones, and connect generations. Since the 15th century, diamond engagement rings have signified the enduring bond between couples. Emotionally, diamonds evoke a sense of wonder and awe that few other objects can match. Their sparkle and brilliance are mesmerizing, captivating our imagination and reminding us of the beauty and complexity of the natural world.

IN THE PRESS

WATCHPRO FEATURES

RAZNY JEWELERS AWARDED INDEPENDENT WATCH RETAILER OF THE YEAR:

Razny Jewelers is proud to have been named the Independent Watch Retailer of the Year at the first-ever U.S. WatchPro Awards in New York City. Over seven decades of dedication, an unwavering commitment to perfection, and a deep love for what they do have marked the family's journey. This award is a testament to the power of storytelling through timepieces, bridging the lived experiences of generations. The Razny Jewelers family thanks WatchPro, the judges, and everyone who contributed to this remarkable celebration.

RAZNY JEWELERS NAMED TOP 100:

Razny Jewelers is honored to have made this year's Hot 100 list in the Retail Power Players category. Published by WatchPro magazine, the premier publication for news on timepieces and jewelry for collectors around the globe, this designation is reserved for elite American jewelers who display exceptional growth and success.

TALKING TIMEPIECES:

Editor and founder of WatchPro, Rob Corder, sat with Stan Razny to talk timepieces, discuss the ever-changing landscape of the luxury watch market, and breakdown how family-owned independents provide the value that direct-to-consumer brands struggle to match.

Deemed "The Big Interview," it also showed how seriously Razny Jewelers takes its position as the only authorized dealer for Patek Philippe in a territory that stretches across Illinois, Indiana, Iowa, and Wisconsin, surpassing 220,000 square miles.*

AS SEEN IN VOGUE

Over 75 years ago, the Razny family immigrated to America with the vision of building a legacy they could pass on to their children. Today, they are proud to have developed their dream into something far grander than they could have imagined. Ingrid Razny and Christine Razny-Porter share their family's story in this September's issue of Vogue Magazine.*

*Links to full articles on razny.com/press





NATIONAL JEWELER: HALL OF FAME INDUCTEES

National Jeweler, the leading New York-based news source for jewelry industry insiders, has chosen the latest group of inductees for its prestigious Retailer Hall of Fame. Stan and Ingrid Razny, second-generation owners of Razny Jewelers, are receiving the 2023 honor as forward-thinking multi-store independent jewelers.*

ELITE SHOWCASE

The 62-car field features entries from the world's leading car manufacturers, all striving for glory and to prove the durability of their vehicles in competition.



THE 24 HOURS OF LE MANS

The centenary edition of the 24 Hours of Le Mans, a race that celebrates endurance and motor sport excellence, took place on 10 and 11 June. Rolex has been the Official Timepiece of this legendary event since 2001.



START YOUR ENGINES

Since 1923, drivers have been drawn to the Circuit de la Sarthe to test their mettle – and that of their cars.





A CENTURY OF LEGENDARY RACING

Created in 1923, the 24 Hours of Le Mans is the oldest and one of the most prestigious car races in the world. A stern test of the reliability of the machines as well as the physical and mental stamina of the drivers, Le Mans attracts some of the greatest names in motor sport. On the 13.6-kilometre (8.4 miles) Circuit de la Sarthe in north-west France, some 62 cars, each with teams of three drivers, race against each other, divided into two Prototype and one GT Class. The winning team is the one which covers the greatest distance in 24 hours, some 5,300 kilometres (3,293 miles). Rolex has been the Official Timepiece of the race since 2001.

100 YEARS OF INNOVATION

To reach the finish line and become a part of history. The estimated 3,500 drivers who have taken part in the 24 Hours of Le Mans over its 100-year history have been fuelled by this twofold ambition. Since its inaugural edition, the mythical event has also been an ideal testing ground for the many advances in motor sport technologies. The trialing of a new road surface in 1922 (still viable today), improvements to safety, engines and aerodynamics, as well as, since 2022, the requirement for all cars to run on 100 per cent renewable biofuel, are among the notable developments marking a century of progress supported by this legendary endurance race. The 24 Hours of Le Mans has never stopped living with the times.



TOM KRISTENSEN: 'MR LE MANS'

Tom Kristensen has well earned his nickname. The most successful driver in the legendary race's history, he won it a record nine times, starting with his debut in 1997. A Rolex Testimonee since 2010, the Danish racing driver was FIA World Endurance Champion in 2013 and, a decade later, is the ambassador of the 24 Hours of Le Mans centenary. "You carry a win at Le Mans with you forever. I feel proud and humble reflecting on the race's legacy and Rolex's involvement with motor sport. Together they are the perfect combination; both striving for excellence through persistence, technical innovation and human endeavour."

GRUELLING CHALLENGE

Over the course of 24 hours, the leading teams of drivers will complete in excess of 5,300 kilometres (approximately 3,300 miles) and about 380 laps of the famous 13.6-kilometre (8.4 miles) circuit.





MARK OF CHAMPIONS

The winning drivers at Le Mans receive a specially engraved Oyster Perpetual Cosmograph Daytona to commemorate their historic achievement.

THE COSMOGRAPH DAYTONA: A SINGULAR PRIZE

The winners of the top class of the 24 Hours of Le Mans receive an Oyster Perpetual Cosmograph Daytona, specially engraved for the occasion. A legendary watch whose characteristic design has become iconic, the Cosmograph Daytona is emblematic of Rolex's expertise. Equipped with a movement entirely designed and produced by the Rolex manufacture, it stands out by virtue of its chronometric precision as well as its unfailing reliability.

Tom Kristensen has won several throughout his career: "My Daytonas are emotional possessions and remain as special to me today as when I first won them. They tell the story of defining moments in my career. When I look at the watches, not only do I see precision timing but I also relive the achievements with my team and co-drivers all those years ago."

ROLEX AND SPORT

Hans Wilsdorf believed in challenging oneself and held a lofty view of sport's role in society. To test his watches, he entrusted them to those who pushed themselves to the absolute limit. Driven by an unwavering quest for excellence, the founder of Rolex discovered valuable allies in athletes through their exceptional feats.

For many decades, the brand has actively championed culture, architecture, exploration and conservation of the planet. And in the sporting world, it has built a diverse range of partnerships across tennis, golf, equestrianism, skiing, sailing and motor sport. Rolex partners governing bodies, competitions and athletes – from established champions to promising talents – in long-standing engagements that help perpetuate the future of these disciplines and promote excellence. 🏆



GOING THE DISTANCE

At this epic, twice-around-the-clock race, man and machine embark on a journey through day and night, often in the most extreme conditions.

HERE COMES THE SUN

Like the bright, warm sun, yellow diamonds stand out for their vibrant hues. Yellow signifies happiness, positivity, and energy.



This page: 13.55 ct mixed shape yellow diamond and 8.43 ct white diamond necklace by Razny Collection. Various cut yellow diamond hoops, featuring white diamonds or enamel, by Razny Collection, Etho Maria, and Kwiat. Opposite page: Full-cut white diamond flower studs by Rahaminov Diamonds and Kwiat. Pave white diamond flower studs by Piranesi and Penny Preville. Pink sapphire, tsavorite, yellow sapphire, and orange sapphire pave flower studs by Piranesi.



FLOWER POWER



LIGHT YEARS AHEAD: PATEK PHILIPPE'S NEWEST AQUANAUT LUCE

THE FIRST ANNUAL CALENDAR PRESENTED IN THE AQUANAUT FAMILY

IN 1997 PATEK PHILIPPE LAUNCHED THE AQUANAUT COLLECTION, FOLLOWED BY THE AQUANAUT LUCE COLLECTION (THE FEMININE REINTERPRETATION) IN 2004 TO GLOBAL PRAISE. IT WAS YOUNG, SOPHISTICATED, AND MODERN, FEATURING A TEXTURED "TROPICAL" STRAP MADE OF A COMPOSITE MATERIAL RESISTANT TO WEAR, SALT WATER, AND UV RADIATION.

This year, the hearts of watch enthusiasts were once again captured by the Aquanaut Luce, thanks to Patek Philippe's latest masterpiece, the Ref. 5261R. This new addition to the Genevan watchmaker's current collection is a testament to Patek Philippe's commitment to innovation, craftsmanship, and timeless elegance. The Aquanaut family has already become an icon among watch aficionados worldwide for many reasons. Let's delve into the history of the collection and the extraordinary features that make the Ref. 5261R highly coveted.

LIGHTING THE WAY

Patek Philippe boasts an illustrious heritage dating back to 1839. For generations, Patek Philippe timepieces have been sought after for their precision, craftsmanship, and timeless designs. Each creation is a culmination of centuries of watchmaking expertise, and the timepieces within the Aquanaut collection are no exception.

With a rounded octagon case inspired by the Nautilus, the Aquanaut earned its own unique place as the new sports watch in the world of Patek Philippe. Harmonizing the best of functionality and beauty, the Aquanaut and Aquanaut Luce became the wearable, modern cousin of the aforementioned Nautilus.

The new Ref. 5261R is indeed a work of art. The Aquanaut Luce Annual Calendar features the signature Aquanaut pattern embossed on the blue-gray dial, adding depth and texture to its appearance and complementing the design of the tropical composite strap. Its round case, with a diameter of 39.9 mm, perfectly balances classic proportions and contemporary wearability. The gentle curve of the lugs ensures a comfortable fit on the wrist, making it a suitable choice for any occasion. Patek Philippe has meticulously hand-finished and decorated every component, a hallmark of the brand's dedication to detail.

Encased in 18k rose gold with a sapphire crystal case back from where you can marvel at the self-winding movement, it radiates elegance and sophistication.

COMPLICATIONS: A SYMPHONY OF HOROLOGICAL EXCELLENCE

The Ref. 5261R introduces a new beating heart, the 26-330 S QA LU. For the first time, Patek Philippe has utilized their patented annual calendar mechanism (1996) within the Aquanaut Luce collection. This new reference allows for an annual calendar displayed via subdials featuring month, day, and date indicators. It needs adjusting only once per year in February. The moon phase indicator sits perfectly like a painting at 12 o'clock, tracking the lunar cycle with astounding accuracy. Finally, the Ref. 5261R houses a day/night indicator, reminding its wearer of the constant interplay between light and darkness, adding a poetic touch to the watch's functionality. The Aquanaut Luce Annual Calendar is a unique combination of useful complications and a "casual chic" aesthetic.

As one of the most sought-after timepieces in the world, the Ref. 5261R is destined to be cherished by watch connoisseurs and collectors for generations to come. It is a testament to the brand's unwavering dedication to perfection, ensuring that Patek Philippe will continue to inspire awe and admiration in watch enthusiasts worldwide.





bold Chokers

the EDIT

Bold silhouettes with delicate details are what's in vogue.



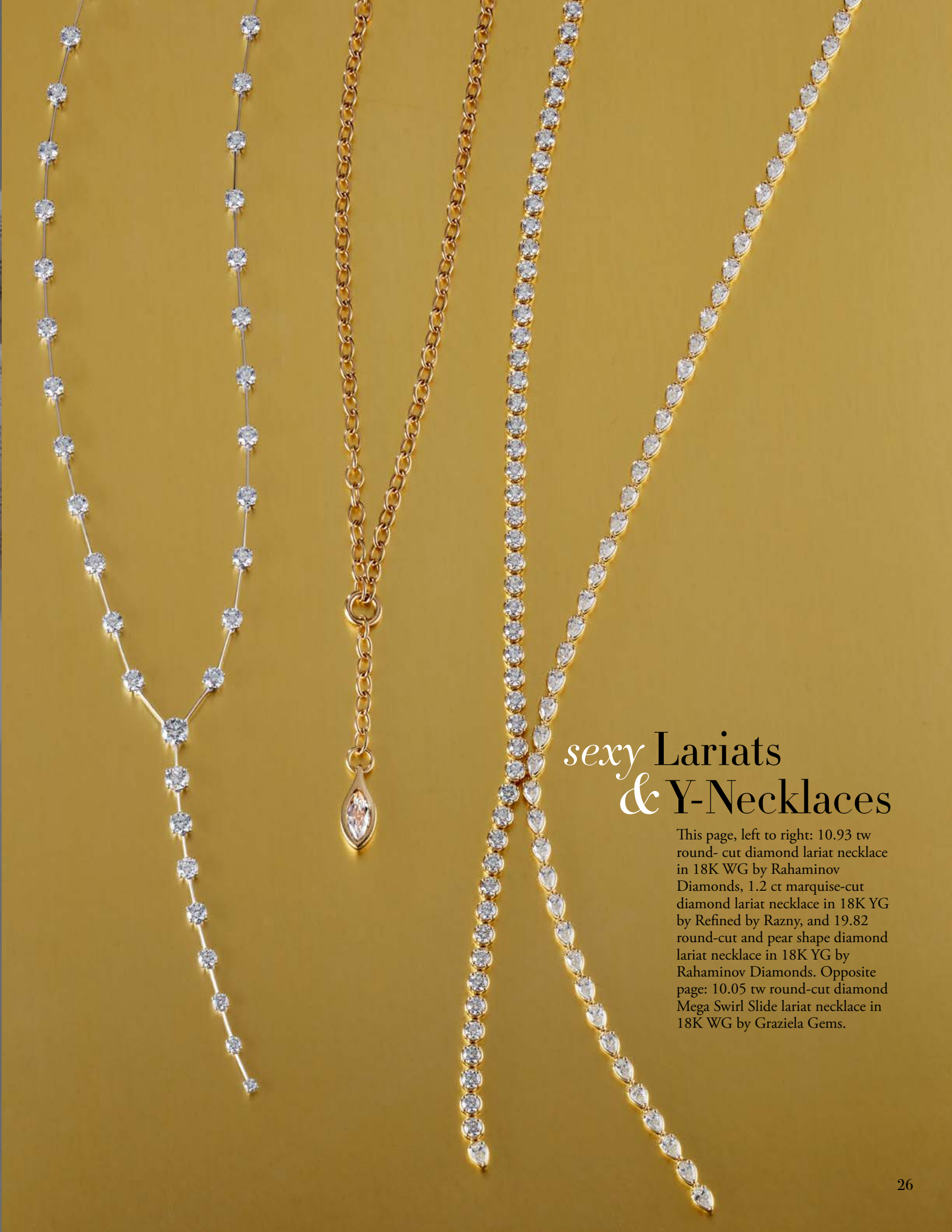


second skin Bracelets



This page, from top: 26.13 tw round-cut diamond bracelet in 18K YG by Razny Collection, 25 tw old European-cut diamond art deco bracelet in platinum by Fred Leighton, round-cut diamond and mixed-cut diamond bangle YG bracelets by Penny Preville, Rahaminov Diamonds, and Kwiat. 20.89 tw round and rose-cut diamond bracelet in 18K WG by Etho Maria. Opposite page: 13.79 tw WG and 7.92 tw YG Messika Move Iconica diamond choker necklaces.





sexy Lariats & Y-Necklaces

This page, left to right: 10.93 tw round-cut diamond lariat necklace in 18K WG by Rahaminov Diamonds, 1.2 ct marquise-cut diamond lariat necklace in 18K YG by Refined by Razny, and 19.82 round-cut and pear shape diamond lariat necklace in 18K YG by Rahaminov Diamonds. Opposite page: 10.05 tw round-cut diamond Mega Swirl Slide lariat necklace in 18K WG by Graziela Gems.

Lifestyles

*The Art
of Everyday
Living*





Mom & CEO

This page: Lunaria Collection earrings, necklace, and bracelets by Marco Bicego, available with and without diamonds.
Opposite page: Diamond, sapphire, and name stretch bracelets by Hulchi Belluni. Available in 18K YG, RG, and WG.



Dog Walker & Mystery Shopper

This page: Cultured pearl chain, diamond and YG cuff, diamond and YG clip earrings, and diamond terrier pin are all vintage pieces by Fred Leighton. Opposite page: Bangles with ombre pink sapphires, ombre blue sapphires, rainbow sapphires, tanzanite, amethyst, and diamonds by Penny Preville. Rainbow sapphire cluster and bypass rings, and rainbow sapphire choker by Penny Preville. 62.10 tw purple spinel necklace in 18K RG by Razny Collection. 9 ct fancy yellow diamond engagement ring and cushion yellow diamond band by Razny Bespoke. Ref. 7200/200R Calatrava by Patek Philippe.



TO CHICAGO





Bon Voyage & Bon Vivant

This page: 49.32 tw diamond choker, 36.42 tw marquise white diamond bracelet with 2.8 tw pear shape pink diamonds, and 5.73 tw oval engagement ring all by Rahaminov Diamonds. Ref. 5267/200A Aquanaut Luce by Patek Philippe. Opposite page: Diamond tiara tennis bracelet, diamond tennis necklace, Ashoka® pendant and engagement ring, and diamond studs by Kwiat.

BUBEN&ZÖRWEIG

A MAGICAL HIGH SECURITY SAFE.

THE VISION



Vision by Buben&Zorweg represents the pinnacle of design, blending innovative technology with exquisite craftsmanship in a discreetly concealed facade. The German manufacturer, famous for detail-oriented security, created the door using 12mm of bulletproof two-way mirrored glass. When activated by the owner, the opaque mirrored front becomes a transparent window to the contents of the safe, an interactive experience you must see in person.

Crafted with precision, the Vision boasts high-grade materials, intricate detailing, and a timeless design that effortlessly complements any environment. Its seamless integration of cutting-edge technology ensures unparalleled security with a redundant locking system, seven-digit number block, emergency key, and state-of-the-art alarm systems.

The interior is a testament to meticulous engineering, featuring customizable watch winders and jewelry compartments. The experts at Buben&Zorweg also offer a wide range of options for customization, including complete room solutions.

Beyond its functional brilliance, this safe symbolizes sophistication and opulence. It caters to individuals who demand the utmost quality, elegance, and security. Buben&Zorweg's commitment to excellence is evident in every facet of Vision, making it an embodiment of luxury and peace of mind for those who appreciate the finer things in life.





KWAIAT

DIAMONDS SINCE 1907



INTRODUCING

Refined

BY RAZNY

Refined by Razny is a private collection of reimagined diamond essentials.

This page: Diamond bracelets in 18K YG and RG, middle finger ring: 1.95 tw pear shape and emerald-cut diamond spiral ring in 18K YG, pinky ring: .54 tw marquise-cut diamond pinky ring in 18K YG. All by Refined by Razny. Opposite page, from top to bottom: 3.51 tw mixed cut diamond bypass bangle in 18K WG, 1.65 tw mixed cut diamond bangle in 18K YG, 3.71 emerald cut diamond bangle in 18K YG, 1.65 tw mixed cut diamond bangle in 18K RG, 3.44 tw mixed cut diamond bangle in 18K WG.

Curated by Christine Razny-Porter, third generation owner of Razny Jewelers, each piece invites you to bring luxury into everyday living, dressing in breathtaking natural diamonds for the office, grocery store, and a night out with family and friends. Surround yourself with the vibrant brilliance of refinement.





From top: 3 row mixed-cut diamond $\frac{3}{4}$ band in 18K WG, east west pear shape diamond $\frac{3}{4}$ band in 18K YG, emerald-cut eternity band in 18K WG, 1.58 tw east west oval-cut diamond band in 18K RG, 3.59 tw bezel set radiant-cut diamond eternity band in 18K YG, 1.05 tw mixed-cut diamond band in 18K WG and YG. 2.43 tw east west oval-cut eternity band in 18K RG, 1.89 tw mixed-cut diamond eternity band in 18K RG, 1.05 tw mixed-cut diamond band in 18K RG, 1.52 tw east west emerald-cut halfway band in 18K RG, 1.68 tw bezel set east west oval-cut halfway band in 18K YG, Double row mixed-cut diamond $\frac{3}{4}$ band in 18K WG. All by Refined by Razny.

Necklaces: Diamond tennis necklace in 18K YG and WG, bezel set pear shape and marquise-cut diamond necklace in 18K YG, milgrain hexagon diamond tennis necklace in 18K WG, mixed-cut diamond tennis necklace in 18K WG.

Earrings from left to right: 2.07 tw mixed-cut diamond ear crawlers in 18K WG, 3.76 tw pear shape diamond drop earrings in 18K WG, 3.35 tw mixed-cut diamond front facing hoops in 18K YG, 1.97 tw mixed-cut diamond drop earrings in 18K YG. All by Refined by Razny.





THE NEW COLORS OF THE CALATRAVA

Since the beginning of modern timekeeping, watch connoisseurs have sought Patek Philippe. This long record of desirability and historic ingenuity gives credence to their slogan, “You never actually own a Patek Philippe. You merely look after it for the next generation.” Indeed, a father’s Calatrava is coveted by his sons, and daughters dream of the day their mother will ceremoniously pass the mechanical masterpiece on to them.

Patek Philippe recognizes their fortunate position within this industry, but they’re not resting on their laurels. With Mr. Thierry Stern, fourth generation owner of the last independent family-owned Genevan manufacture at the helm, Patek Philippe continues to introduce new timepieces that feature technical advancements and modern aesthetic elements while always maintaining the Patek Philippe DNA. As the world evolves, so does the culture of Patek Philippe.

This year, the brand released a timepiece that reflects our times, appealing to new and seasoned collectors alike. The Ref. 6007G Calatrava is both playful and impressive. The sharp geometry on the dial, achieved through embossing in a “carbon” motif, is reminiscent of a sleek sports car. Touches of blue, yellow, or red complete this sporty aesthetic.



CALATRAVA'S NEW COLORS

The Calatrava collection has always been synonymous with understated elegance, but the Ref. 6007G is a shining example of its eternal appeal. It features a sleek and sophisticated 40mm white gold case. Its slim profile and clean lines pay homage to the original Calatrava first introduced in 1932, which reflected the Bauhaus principles of “form follows function” while incorporating modern elements that cater to contemporary, more approachable tastes.

What surprises us most about the Calatrava Ref. 6007G is how its stunning black dial draws attention to each purposeful detail of the timepiece. This new timepiece features the aforementioned carbon motif dial-center and applied numerals with a white luminescent coating for enhanced legibility in low-light conditions. One of three primary colors accents the design, depending on the model. Hues available include yellow, red, or sky blue on the counters and seconds hands and on the stitching and lining of the calfskin straps, which mirror the carbon pattern of the dial. As soon as we fell in love with the blue, we couldn't take our eyes off the electrifying yellow or red, the latter being perfect for Chicago collectors where we have a particular fondness for red and black. In true Patek Philippe fashion, color is used mindfully, with restraint, preserving the timeless look of the watch.

A notable departure from previous Calatrava models is the inclusion of Arabic numerals, adding a touch of boldness and modernity to the overall design. The date window, discreetly placed at 3 o'clock, further enhances the watch's practicality without compromising its elegant aesthetics.

THE HEART UNDER THE HUE

Beneath the captivating exterior lies the beating heart of the Calatrava Ref. 6007G: the caliber 26-330 S C movement. Patek Philippe has a reputation for its exceptional in-house movements, and the Caliber 26-330 S C is no exception. Comprising 212 components, this self-winding movement showcases the brand's dedication to precision and reliability with 30 jewels and a power reserve of 45 hours, allowing owners to confidently depend on the watch to keep accurate time over extended periods.

The Patek Philippe Calatrava 6007G embodies the brand's heritage, showcasing a perfect balance of classic elegance and contemporary design. With its captivating dial, white gold case, and meticulously crafted in-house movement, this watch is an exquisite piece of art that will stand the test of time, ensuring your children and their children will love this timepiece.



DIAMOND EDUCATION

DIAMOND SHAPES



ASSCHER



CUSHION



EMERALD



HEART



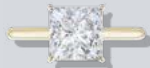
MARQUISE



OVAL



PEAR



PRINCESS



RADIANT



ROUND
BRILLIANT

THE 4 C'S

CUT

Cut also known as "make," refers to how well-proportioned a diamond's dimensions are. These proportions have the most significant impact on a diamond's overall beauty, sparkle, and worth.

COLOR

Color is all about what you can't see. Diamonds are valued by how closely they approach colorlessness – the less color, the higher their value.

CARAT

Carat weight refers to the diamond's size and weight.

CLARITY

Clarity refers to the appearance of a diamond's unique "birthmarks" or characteristics. Because diamonds form deep within the earth, under extreme heat and pressure, some contain distinctive blemishes and inclusions.



NEW TO RAZNY.COM

BUILD YOUR *Dream* RING

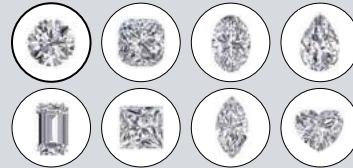


FOREVER BY RAZNY SOLITAIRE

Metal Color: Yellow Gold



Shape: Round



You deserve a ring as unique and brilliant as your love. Visit Razny.com to choose each element of the most important diamond ring you'll ever wear, from the shape of your diamond to the precious metal in which it's set. When you choose Razny Jewelers, you're investing in your future with a brilliant, ethically sourced natural diamond, starting your love story with a miracle that grows more valuable with each passing year.

COMING SOON

VIRTUAL TRY-ON

We understand how vital it is that your engagement ring is the radiant treasure you've dreamed of. How can you know which diamond shape and metal tone is right for you? We have the answer! With our new virtual engagement suite, try on multiple pieces from our collection of natural diamond rings from the comfort of your home, even before you've said, "I do!"





SAVE THE DATE

Wedding Band Weekend

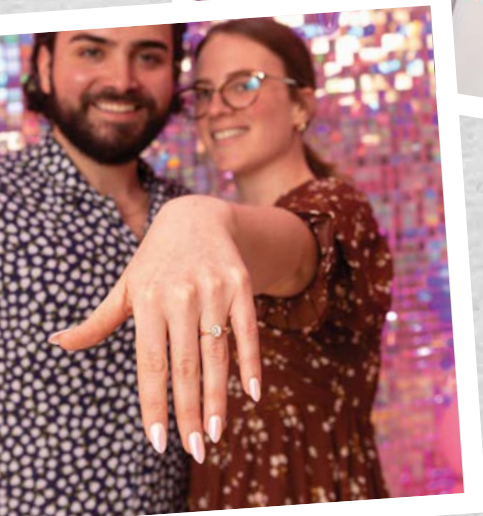
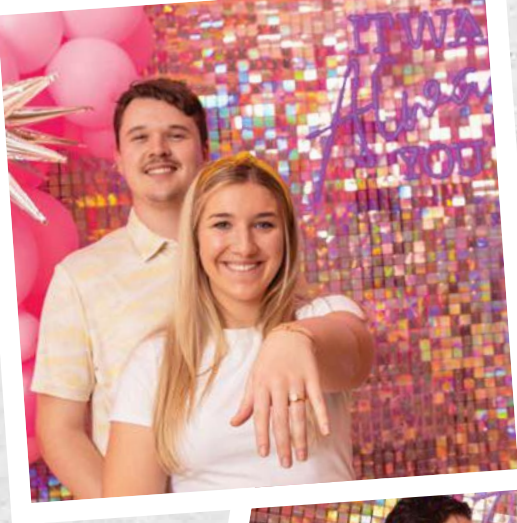
FRIDAY - SUNDAY
APRIL 19 - 21, 2024

Shop the largest collection of men's and women's wedding bands from the industry's top designers.

Wedding Band Weekend is for you, no matter your style or budget.

SPECIAL EVENT PRICING

Photos featured left are real couples who attended our 2023 Wedding Band Weekend event.



CELEBRATE

A love like yours deserves a diamond just as brilliant.

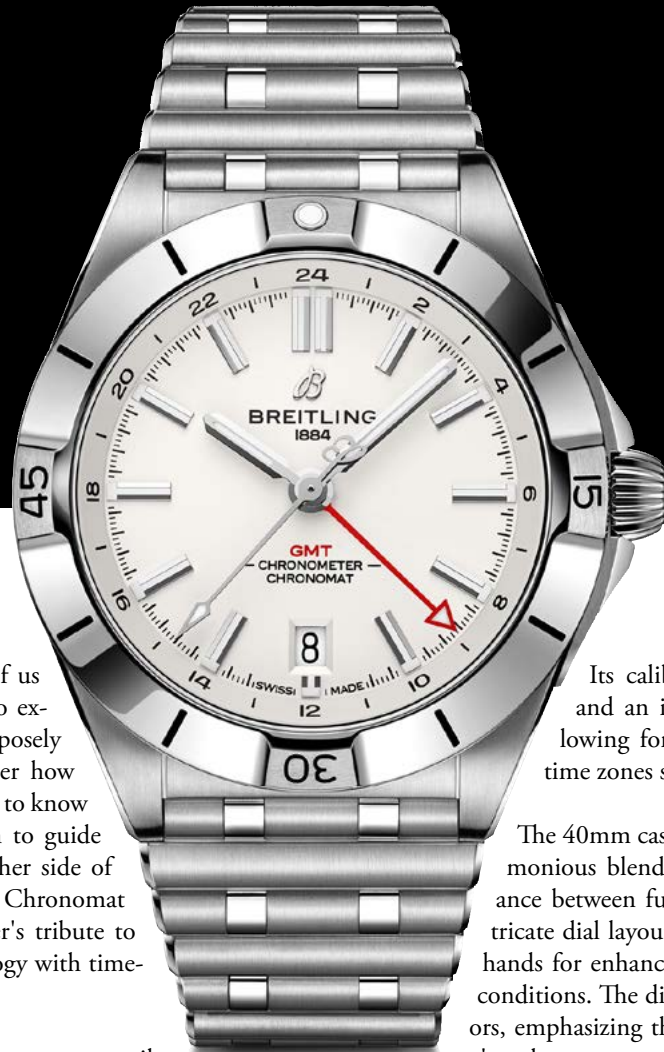


From left to right: East West Ashoka®-cut diamond eternity band in 18K WG by Kwiat. Aluminum glass fiber and 18K YG band by Furrer Jacot. 4.52 ct oval-cut diamond ring by Razny Bespoke.



FOREVER *by* RAZNYSM
JEWELERS

TIME FOR INSPIRATION: THE BREITLING CHRONOMAT AUTOMATIC GMT 40



Now's the time for adventure. Many of us are ready to break from our routines to explore oceans, cross time zones, and purposely push past our comfort zone. No matter how much time we can spare, we always need to know the time. Breitling has crafted a watch to guide us wherever we go, whether on the other side of the globe or 660 feet underwater. The Chronomat Automatic GMT 40 is the watchmaker's tribute to travel, combining cutting-edge technology with timeless design.

Its tone-on-tone 24-hour scale allows the wearer to easily track time in two zones, instantly understanding if it's day or night. If you're crossing multiple regions, the watch's "onion" crown (a classic Chronomat feature) allows easy adjustments on the fly. The signature unidirectional rotating bezel, adorned with engraved numerals, and an additional GMT hand in a contrasting color add a sporty touch while serving as a functional tool for measuring elapsed time and calculating time differences – a nod to the watch's aviation heritage. More than prepared for memories made on land, in the air, or under the sea, the GMT 40 has an impressive 200m water resistance in a practically sized all-steel case and bracelet that work with any wardrobe and setting.

At the heart of the Chronomat Automatic GMT 40 lies its exquisite movement – a self-winding caliber that exemplifies Breitling's commitment to horological excellence, the Breitling 32.

Its caliber provides accurate timekeeping and an impressive GMT complication, allowing for 24-hour tracking across multiple time zones simultaneously.

The 40mm case of the Chronomat GMT is a harmonious blend of robust elegance, a perfect balance between functionality and aesthetics. The intricate dial layout features luminescent markers and hands for enhanced legibility in fluctuating lighting conditions. The dial comes in various captivating colors, emphasizing the watch's versatility and the wearer's style.

Comfort is paramount in the design of the Chronomat Automatic GMT 40. The watch is typically fitted with a stylish integrated bracelet. The bracelet not only enhances the overall aesthetics but also ensures a secure fit, making it suitable for daily wear and active lifestyles. For those seeking a more personalized touch, the option to swap out the bracelet for a leather or rubber strap provides added versatility.

Beyond its functional features, the Chronomat Automatic GMT 40 embodies Breitling's commitment to creating enduring style. The watch seamlessly transitions from the boardroom to outdoor adventures, making it a reliable and sophisticated accessory for any occasion. Whether paired with a tailored suit or a casual outfit, it exudes confidence and refinement.

Discover the best of Breitling for yourself at Razny Jewelers in Addison, Highland Park, and Hinsdale.



BREITLING



The All Star Squad

Giannis Antetokounmpo
Chloe Kim
Trevor Lawrence



#SQUADONAMISSION

FRED LEIGHTON



Fred Leighton:

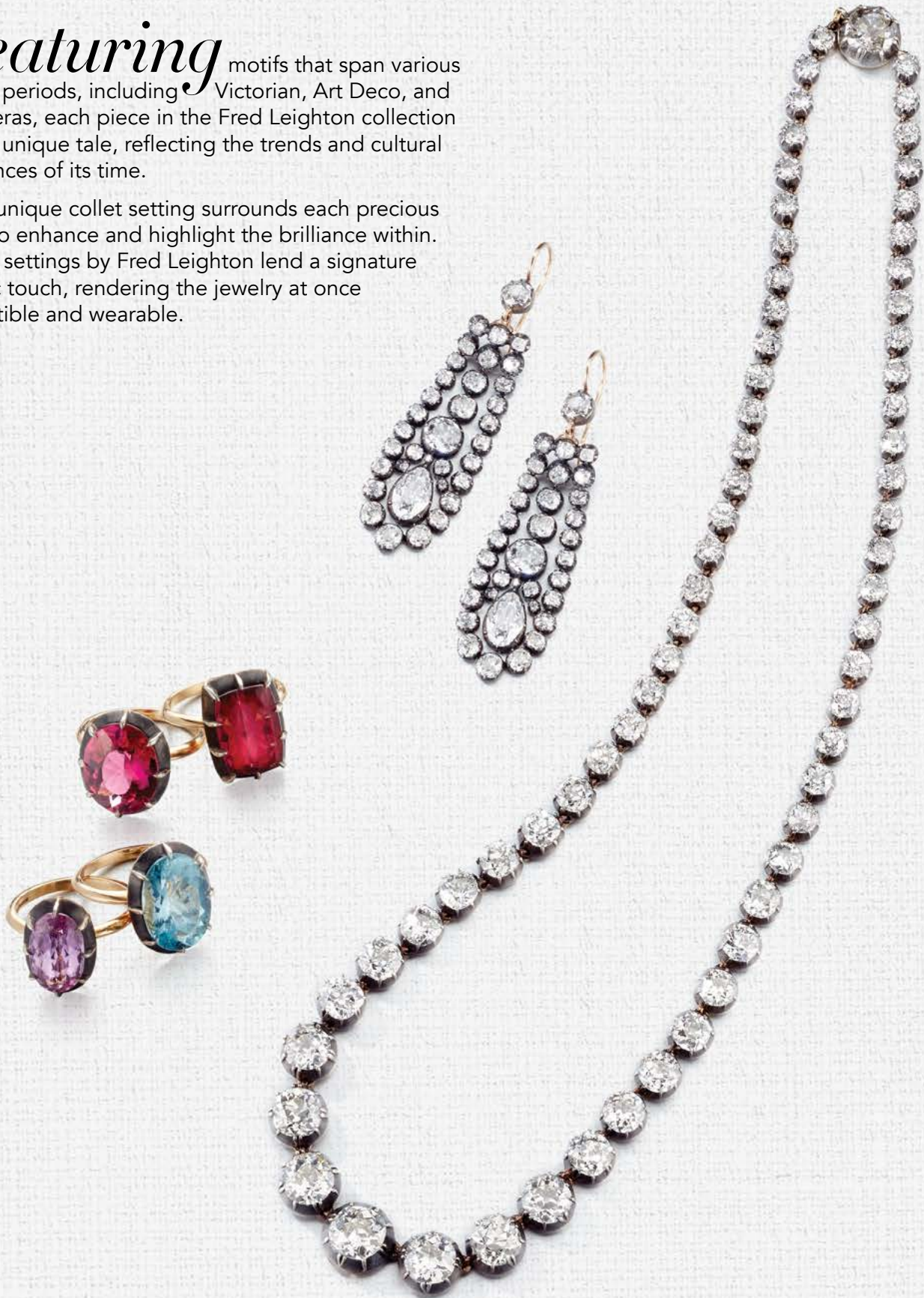
*The Story Behind
the Statement Piece*

Since the 1970s, a decade synonymous with statement-making style, Fred Leighton has been sought-after for its curated collection of vintage and estate jewelry pieces. Today, the name is also known for contemporary jewelry inspired by antiques, evidence of the timeless power of storytelling through precious metals and gemstones.

These Fred Leighton pendants began as rare vintage pins that were then transformed into one-of-a-kind talismans to be worn around the neck. Each piece is distinctive, inspired by the story of its owner and its past, crafted from the finest materials in the world.

Featuring motifs that span various iconic periods, including Victorian, Art Deco, and retro eras, each piece in the Fred Leighton collection tells a unique tale, reflecting the trends and cultural influences of its time.

Their unique collet setting surrounds each precious gem to enhance and highlight the brilliance within. Collet settings by Fred Leighton lend a signature classic touch, rendering the jewelry at once collectible and wearable.



This page: 6.01 ct oval rubellite collet set ring. 6.17 ct cushion rubellite collet set ring. 3.95 ct oval pink topaz collet set ring. 5.57 oval aquamarine collet set ring. 31.57 ct old mine diamond riviere necklace. 8.15 ct round and pear shape old mine diamond drop earrings. All by Fred Leighton. Opposite page: One-of-a-kind talisman pendant necklaces by Fred Leighton.

FRED LEIGHTON



PENNY PREVILLE



MESSIKA

PARIS

DISRUPTING DIAMONDS





Color . . .



Black Room: 2.15 ct fancy pink diamond and 21.83 ct mixed shape white diamond firework earrings in platinum and 18K RG by Razny Bespoke. 9.23 tw pear, round, and marquise shape diamond wrap ring in 18K WG by Rahaminov Diamonds. 2.8 ct fancy pink diamond and 36.42 ct pear-shape and marquise-cut diamond flower bracelet in 18K WG by Rahaminov Diamonds. 6.63 tw Movál® diamond engagement ring in platinum by Rahaminov Diamonds. Red Room: 10.51 ct ruby and 2.48 ct white diamond earrings in 18K WG, 32.3 ct oval and pear shape ruby and 25.6 ct pear shape and round diamond necklace in 18K WG, 34.44 ct oval and pear shape ruby and 10.84 ct round and pear shape white diamond bracelet in 18K WG, 6.97 ct oval ruby and white diamond ring in 18K WG. All by Piranesi.



Green Room: 5.44 ct pear shape emerald and white diamond drop earrings in 18K WG. 18.94 ct oval emerald and white diamond ring in platinum, 14.62 ct pear shape emerald and 15.53 ct round and marquise-cut white diamond droplet necklace in 18K WG, 7.66 ct rose-cut emerald and white diamond button earrings. Blue Room: 8.67 ct pear shape blue sapphire ring and 7.11 ct pear shape and round-cut white diamond drop earrings in 18K WG, 7.46 ct oval blue sapphire and white diamond ring in platinum. All by Piranesi.



... *my world*

WHY CHOOSE RAZNY JEWELERS

FOR JEWELRY REPAIR AND
TIMEPIECE SERVICING

We understand your treasures hold more value than meets the eye. They carry memories of the moments you cherish most. By choosing our family, you're trusting a team of professionals with over seven decades of experience. We care for your items as if they're our own. While other jewelers may see outsourcing as more convenient, there are several compelling reasons why in-house jewelry repairs are the better choice and why Razny Jewelers is the best option for jewelry and timepiece servicing.



Accountability

First and foremost, in-house jewelry repairs offer greater control and accountability. When you hand over your jewelry to our team, you have direct access to the specialists working on your piece. We listen attentively to your thoughts and concerns, guaranteeing personalized attention.

Expertise

Since 1951, Razny Jewelers has been caring for the jewelry of Chicago families. Our team of artisans possesses specialized knowledge and skills acquired through years of experience working with a wide range of designs. Moreover, we understand the materials, techniques, and craftsmanship involved in jewelry making. This earned knowledge allows us to assess and address repairs more accurately, ensuring that the integrity and aesthetics of your jewelry are preserved.

Security

Our in-house jewelry repairs offer elevated protection for your pieces. By keeping your jewelry within our secured premises, you minimize the risk of loss, damage, or theft that may occur during transit or when entrusted to an unknown third party.

Integrity

As a jeweler dedicated to ethically sourced natural diamonds, you can rest assured that our gems are not lab-grown or devalued. We do not offer lab-grown diamond jewelry repairs. This stand is to preserve our integrity as a jeweler who can be trusted not to use lab-grown diamonds in custom creations or servicing.

Razny Jewelers knows Chicago area communities deserve only the best. Our in-house repair experts offer personalized attention, expertise, efficient turnaround time, and enhanced security, contributing to a more satisfactory experience and ensuring that your precious treasures are handled with the utmost care and professionalism.

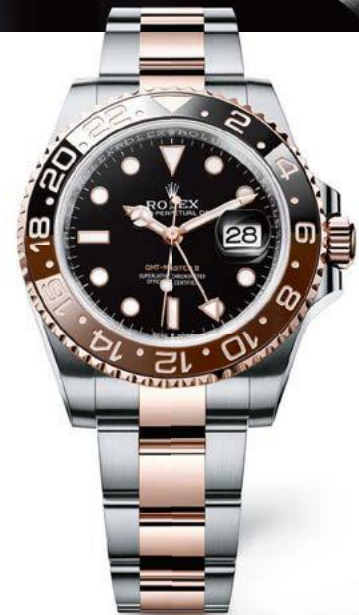


BIDIRECTIONAL ROTATABLE BEZEL

CRISS-CROSSING THE GLOBE

The watch of choice for travelers. Introduced in 1955, the original GMT-Master was soon adopted by transatlantic pilots as a navigational aid. A 24-hour hand and rotatable bezel allow it to display two time zones simultaneously. Today, the GMT-Master II is the ideal timepiece for travelers, its high-tech two-color Cerachrom bezel mirroring the aesthetics of the original model. **The GMT-Master II.**

#Perpetual



OYSTER PERPETUAL GMT-MASTER II

OFFICIAL ROLEX JEWELER

