

EMPLOYMENT OPPORTUNITY

FIELD TECHNICIAN III



MEDFORD WATER COMMISSION

200 S. Ivy St. - Rm. 177
Medford, Oregon 97501
Tel: 541.774.2430
medfordwater.org



COME WORK WITH US!

DO YOU HAVE EXPERIENCE PROVIDING TECHNICAL AND ELECTRICIAN SUPPORT FOR WATER SYSTEMS?

Do you have a passion for public service?

Medford Water Commission has an opening for a team-oriented Field Technician III that will uphold our values and contribute to the success of our organization.

ABOUT OUR ORGANIZATION

Medford Water Commission operates and maintains the water system that delivers high-quality drinking water to around 140,000 Rogue Valley residents.

The Commission is an autonomous agency of the City of Medford, Oregon, established through a change in the city charter on November 7, 1922, and governed by the Board of Water Commissioners. The Board appoints the General Manager, who is authorized to direct the operations of the utility.

We directly serve customers in Medford, as well as the White City area, and the Elk City and Charlotte Ann Water Districts. The cities of Ashland, Central Point, Eagle Point, Jacksonville, Phoenix, and Talent are served on a wholesale basis.

Big Butte Springs is the Commission's primary water source, with the Rogue River used as a supplement during the summer months.

There are 63 full-time employees, as well as a varying number of seasonal employees. It's a great time to become a member of our team!



OUR VISION

To be the Rogue Valley's trusted municipal water provider for present and future generations, through responsible stewardship, accountability, and the pursuit of excellence.



OUR VALUES

WORTH.

To our community.

We deliver the best value for existing and future customers.

ACCOUNTABILITY.

In everything we do.

We build strong relationships through open communication.

TRUST.

We strive to earn it.

Public health is our number one priority.

EXCELLENCE.

In water quality, customer service, and reliability.

We bring forward-thinking solutions to challenges.

RESPECT.

For everyone.

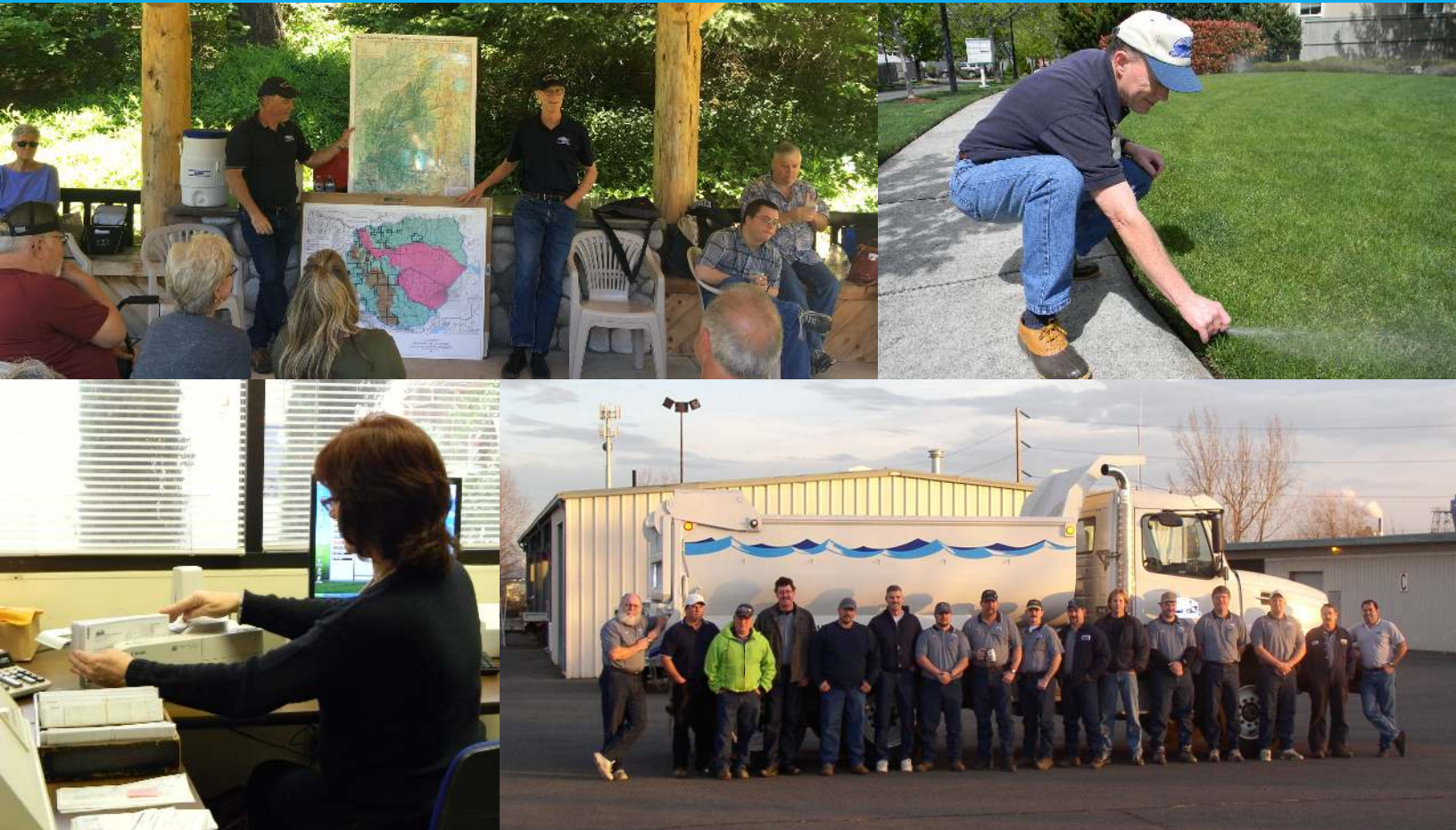


ABOUT MEDFORD, OREGON

As of July 2019, the the city of Medford had a total population of 83,072, and a metropolitan area population of 217,479, making it the fourth largest metro area in Oregon. It sits in a region between the Cascade Range and Siskiyou Mountains called the Rogue Valley.

Medford's economy is largely driven by the health care industry, with two local major medical centers. The largest direct marketer of fruits and food gifts in the United States, Harry and David Operations Corporation, is based in Medford. These are the largest employers in Southern Oregon. Assisted living and senior services have become an important part of the economy as well, making Medford a retirement destination. Employment continues to increase in this growing community.

Medford is home to Oregon's 3rd busiest airport, the Rogue Valley International-Medford Airport (airport code MFR), and the metro area is served by Rogue Valley Transportation District bus system.



A MESSAGE FROM GENERAL MANAGER BRAD TAYLOR

Medford Water Commission is a wonderful place to hang your hat. Not only do we serve the public by providing the highest-quality drinking water at the best value, which gives us pride in what we do, but we also encourage our staff to reach their highest career goals by providing internal promotional opportunities, additional training resources, mentoring, and a top-notch working environment where we care about each other and our families. Come check out Medford Water Commission and see if we are a great fit for you and your career. We love what we do, and we hope you will love working here too!

Brad Taylor, General Manager

THE POSITION

The Field Technician III is responsible for the operation of pumps, automatic valves, motors and instrumentation; responsible for control equipment of water facilities/distribution system; and providing technical and electrician support and service for water system instrumentation and control equipment.

Requires expert knowledge of water distribution systems; Maintains supervisory control equipment, instrumentation, pump stations, reservoirs, and monitoring facilities; Performs trouble shooting and analysis of computer generated information via telemetry systems, maintenance, and electrical tasks on water distribution systems.

Active Communication and Respectfulness of co-workers and the public are skills required for this position, as are incorporating Medford Water Commission Values into daily activities.

Minimum qualifications to include high school diploma/GED, LME Maintenance Electrician's license and 6+ years of experience.

Background investigation, valid Oregon Driver's License, or ability to obtain within 90 days of hire, and acceptable driving record required.

A complete job description is available [here](#).



OUR MISSION STATEMENT

To safeguard public health by providing a reliable, high-quality water supply at the best value.





COMPENSATION AND BENEFITS

Salary range: \$6,219/month DOE.

Medford Water Commission also provides an excellent benefits package, including:

Insurance Benefits

- Medical/Dental/Vision for employees and family
- Long Term Disability Insurance - provided by the Commission
- Life Insurance - \$50,000 policy provided by the Commission
- Accidental Death & Dismemberment - \$50,000 provided by the Commission
- Health Reimbursement Account - \$1,800 per year provided by the Commission
- Voluntary Supplemental Policies - Aflac, Critical Illness, Additional Life Insurance, and more
- Flexible Spending Account (FSA) available

Wellness

The Commission's Wellness Program promotes physical, emotional, and financial wellness with various goals and incentives throughout the year. A free and confidential Employee Assistance Program can assist 24 hours a day, 7 days a week, with any personal problem, including crisis counseling, managing anxiety, dealing with financial strain, and more. A fully-equipped fitness center is available at the Lausmann Annex building.

Vacation, Sick Leave, and Holidays

Employees accrue vacation starting at 96 hours per year, and earn 96 hours of paid sick leave annually. In addition, employees receive 3 personal holidays per year and the Commission recognizes 9 paid holidays.

Retirement

- Oregon Public Employee Retirement System (PERS) - 6% contributed by the Commission
- Deferred Compensation Plan (457 Plan) Available

APPLICATION AND SELECTION PROCESS

This opportunity closes Thursday, July 22, 2021.

For position consideration, candidates must submit cover letter, resume, and application by email or mail. Applications must be received by the closing deadline. Following a review of the applications, the most highly qualified applicants will be invited to proceed further in the selection process. Individuals not selected will be notified.

Background investigation and valid Oregon Driver's License with acceptable driving record is required. A computer skills test may be required for clerical positions. All positions require a pre-employment drug test and background check. Some positions may require a pre-employment physical exam. Medford Water Commission is an equal opportunity employer.

A job application and complete job descriptions are available online at medfordwater.org. For more information on the application process, call: (541) 774-2444.

Submit cover letter, resume, and application to Tanya Haakinson, Human Resources Manager, at tanya.haakinson@medfordwater.org or mailed to:

Medford Water Commission
ATTN: Human Resources
200 S. Ivy St. – Room 177
Medford, OR 97501

[CLICK HERE TO APPLY NOW!](#)



WHAT OUR EMPLOYEES SAY

"This is the best job I've ever had."

"I LIKE THE PEOPLE I WORK WITH."

**"I love coming to
work every day."**

"It makes me feel good to know
I'm doing something important
for our community."

"OUR ORGANIZATION IS
IMPORTANT TO THE HEALTH
OF OUR COMMUNITY."

"I appreciate working together as a team."



MEDFORD WATER COMMISSION

Medford Water Commission
Human Resources Department
200 S. Ivy Street - Room 177
Medford, Oregon 97501
(541) 774-2444 | medfordwater.org