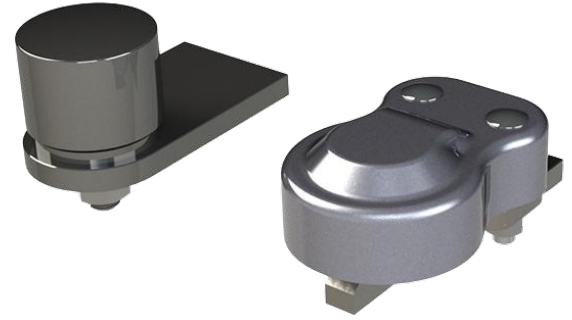


STOP HINGE WITH BOTTOM PIVOT

Specification Sheet
STH

FEATURES

- Improved safety: The integral stop eliminates the need for group stops, reducing trip hazards.
- Minimised pinch points: Limits gate openings with 100 degrees to keep gaps small and reduce potential risks.
- Precisely adjustable: Both the top and bottom hinges offer on-site adjustment for accurate fitting.
- Versatile design: Easily adaptable for use with both left and right-handed gates.
- Centred pivot options: The gate pivot can be positioned at the centre of the gate stile for balanced options.



PRODUCT DETAILS

Product code	Description
STH	Stop hinge with bottom pivot

INSTALLATION

1. Disassemble the slotted adjusting bracket from the hinge and weld onto the gate post near the top. Weld the spigot onto the top of the gate ensuring that the center of the pivot will be vertically in line with the bottom pivot (the small cutout in the bottom of the spigot marks the pivot centre point).
2. Once the gate is galvanised or painted the hinge can be located onto the spigot and bolted to the bracket with the fixings supplied. Slots are provided in the bracket to adjust the gate. Ensure that the unit is greased when fitted.
3. To fit the bottom hinge simply weld the bracket to the post and the pivot to the bottom of the gate, once galvanised this can be positioned in line with the top hinge.
4. To change the handing of the top hinge, remove the two bolts from the hinge and take out the first two U-shaped plates and the round plate. Remove the final plate and turn it up the other way before reassembling the unit and refit. This means the gate can now open 90 degrees in the opposite direction.

MAINTENANCE Lubricate during fitting and once every 6 months to ensure maximum product life.

