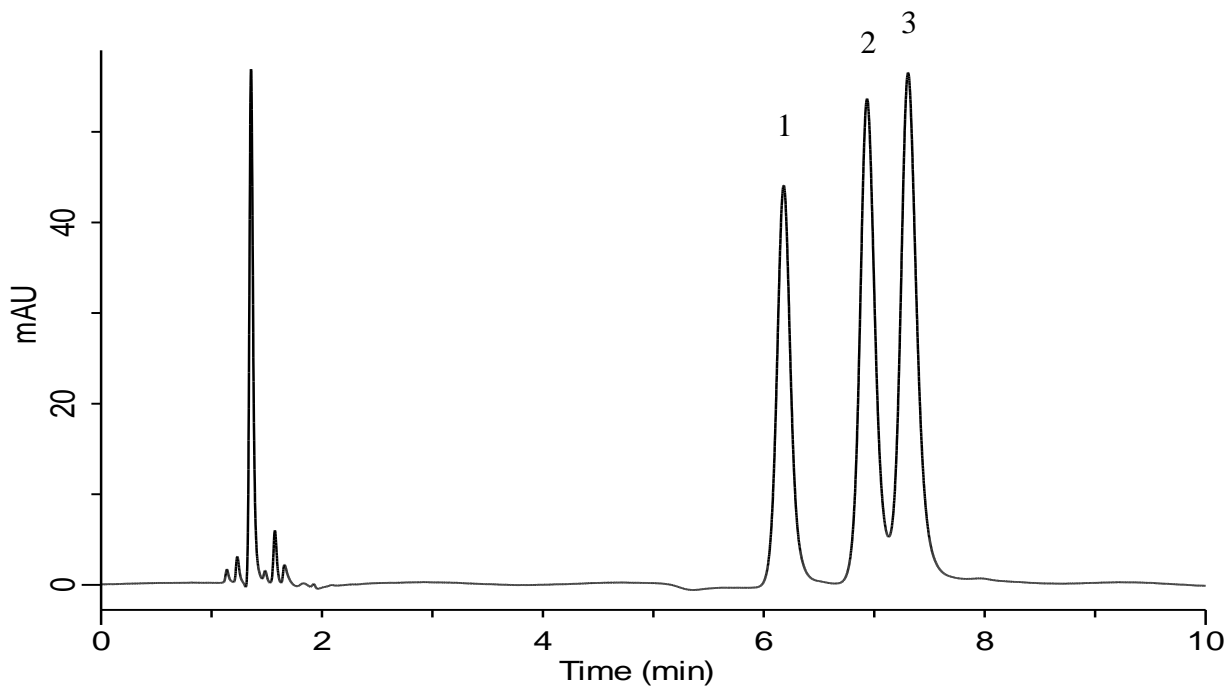


# InertSearch for LC

Inertsil Applications

## Analysis of Methylhippuric acids

Data No. LB644-0806



### Conditions

**Column** : InertSustain Amide  
(1.9  $\mu$  m, 150 x 2.1 mm I.D.)

**Column Cat. No.** : 5020-88819

**Eluent** : A) CH<sub>3</sub>CN  
B) 10 mM HCOONH<sub>4</sub> + 0.1% HCOOH in H<sub>2</sub>O  
A/B = 95/5, v/v

**Flow rate** : 0.3 mL/min

**Col. Temp.** : 40 °C

**Detection** : UV 225 nm

**Injection Vol.** : 0.5  $\mu$  L

**Sample** : Standard

### Analyte:

1. *o*-Methylhippuric acid 500 mg/L  
2. *m*-Methylhippuric acid 500 mg/L  
3. *p*-Methylhippuric acid 500 mg/L