

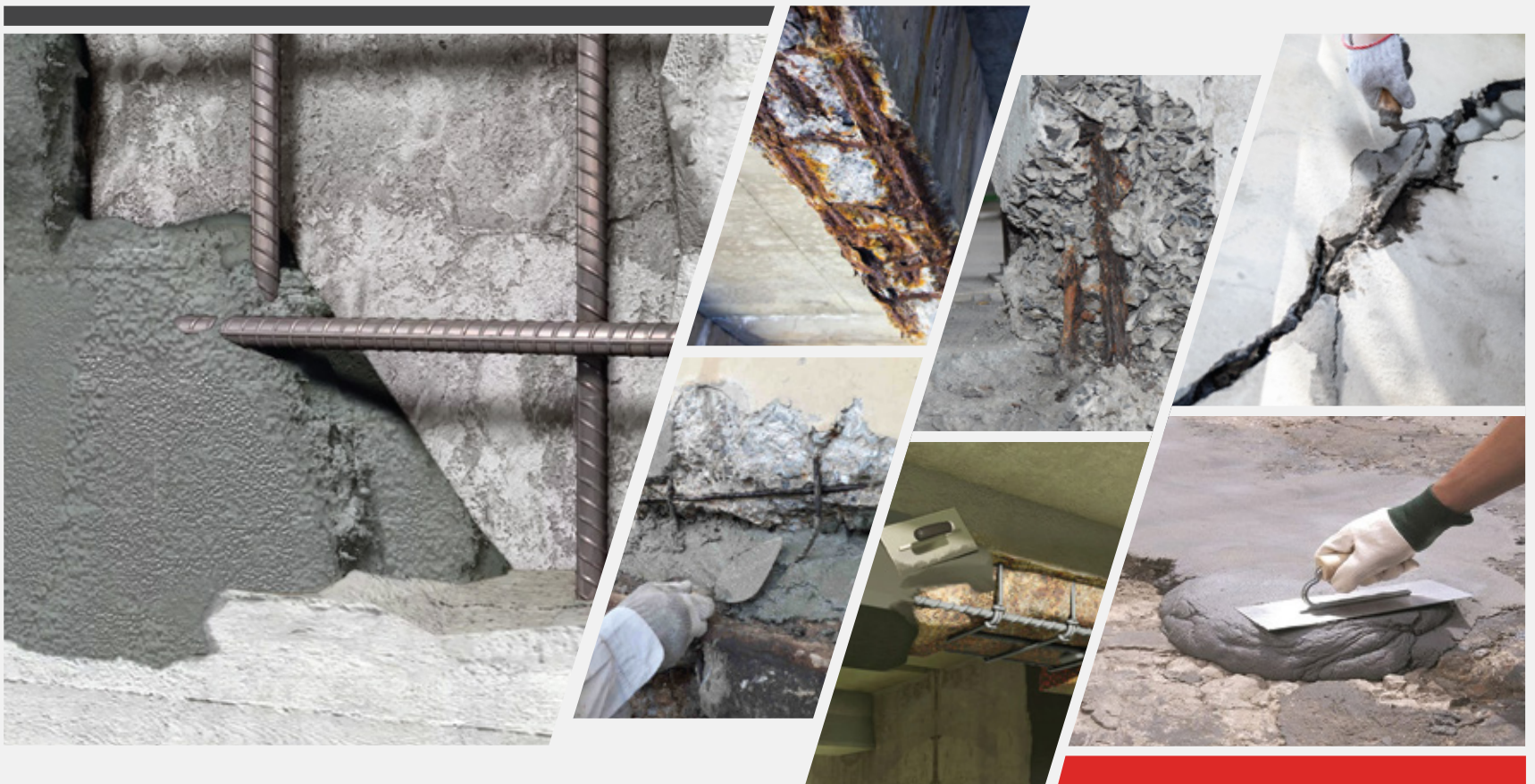
# WHITE SAND

Construction Chemicals

Construct your dream!

## WHITE SAND Co. for INDUSTRY

### Concrete Repair and Restoration Systems



# WHITE SAND

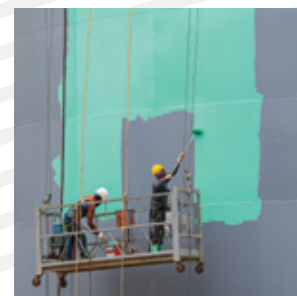
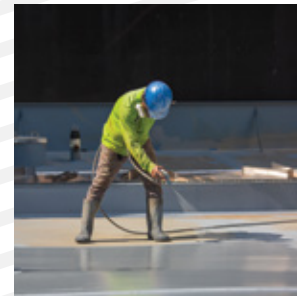
Construction Chemicals

Construct your dream !

## Additional White Sand Products

WHITE SAND produces a wide range of high-quality construction chemicals and specialty products including following product groups:

- Surface Treatments and Primers.
- Cement Modifiers for Mortars.
- Adhesives and Tiling Systems.
- Concrete Repair Compounds.
- Waterproofing Materials.
- Protective Coatings and Linings.
- Industrial Flooring Systems.
- Plasters and Finishing Materials.





**WHITE  
SAND**

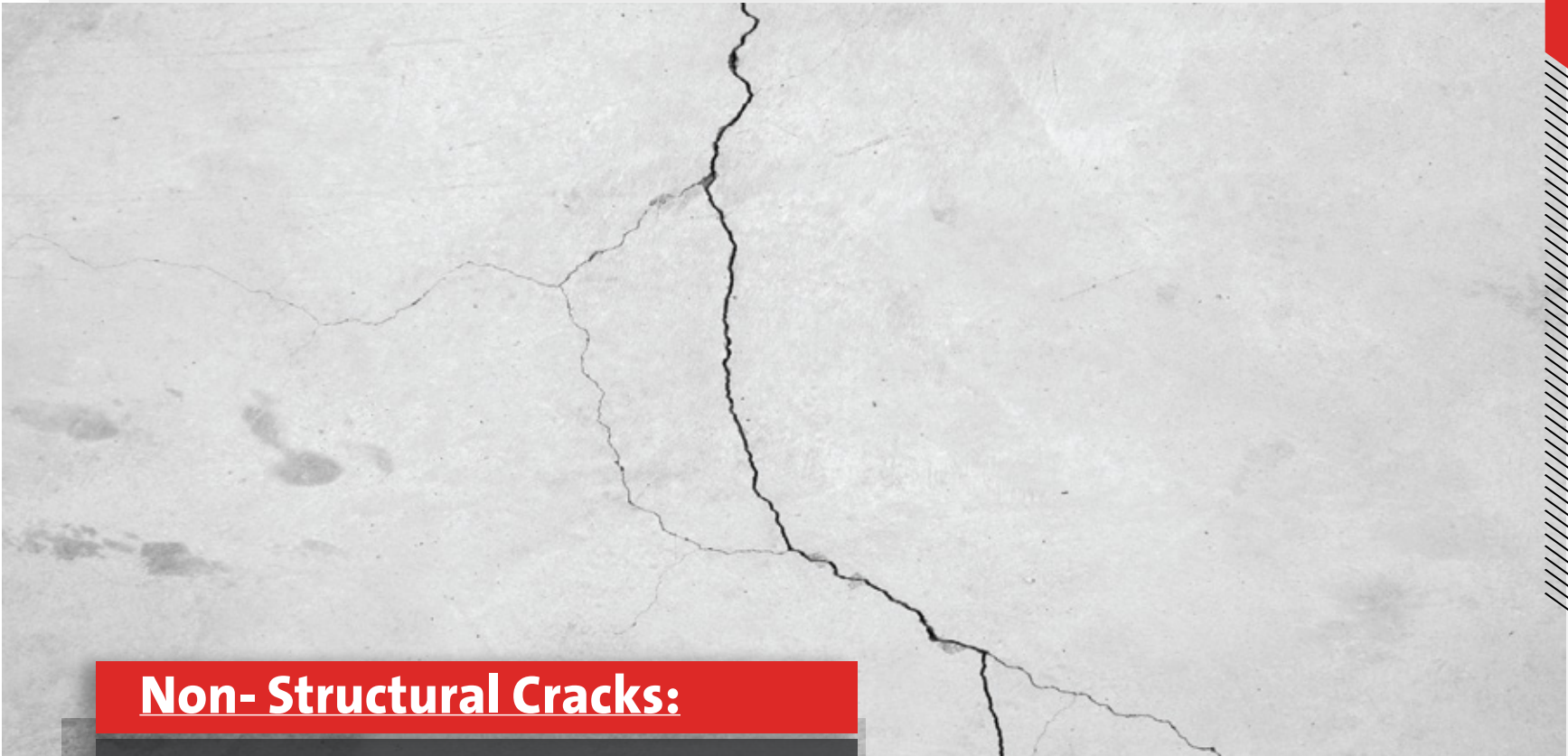
**Construction Chemicals**

**Construct your dream !**

# Concrete Repair and Restoration Systems



## Types of Concrete Cracks:



### Non- Structural Cracks:

- Usually less than three millimeters in width.
- Fragile cracks with no regular shape or size.
- Do not affect the structural integrity of your home or building.
- Root Causes of Non-structural cracks can be: Climate change, using poor construction material, and hydrostatic pressure.



## Types of Concrete Cracks & Repairs:



### Structural Cracks:

- Usually more than three millimeters in width.
- Can be vertical, horizontal, diagonal or stair shaped cracks.
- Can take any shape or size.
- Needs to be addressed quickly, because it threatens the structural integrity of the construction or building.

## Structural Repairs Solutions

### WHITE SAND REP S 100

High strength, Shrinkage Compensated, Structural. Cementitious Repair Mortar.

A ready to use cementitious pre-mixed powder.

That produces a highly consistent repair mortar which is suitable for most structural concrete repairs.

- Suitable for horizontal, vertical and overhead concrete repairs.
- For concrete honeycomb, and general concrete repairs.
- Used for patch repair of concrete floor slabs.
- Concrete repairs where high build application is required.
- Filling voids of a depth greater than 5 mm.
- Recommended application thicknesses up to 40 mm in horizontal up to 20 mm in vertical.





# WHITE SAND

Construction Chemicals

Construct your dream !

## WHITE SAND REP FR 200

A ready to use, Fiber reinforced, micro silica enhanced, cementitious premixed powder, it is suitable for most structural concrete repairs and can be applied in a single application in sections up to 100 mm thickness.



- General concrete repair, honeycomb repairs.
- Horizontal and batch repairs up to 100 mm in a single layer.
- Repair of concrete structures that have been damaged by oxidizing environments and/or sea water.
- Concrete carbonization.
- Vertical concrete repairs up to 75 mm in a single layer.

## WHITE SAND REP SR 150

Sulphate-resistant, high strength structural repair mortar.

- General structure repair of concrete where resistance to Sulphate ions is required.
- Patch repair of concrete floor slabs.
- Filling voids of a depth greater than 5 mm.





# WHITE SAND

Construction Chemicals

Construct your dream !

## WHITE SAND MC 10

A high strength, non-shrink, Structural self-compacting micro-concrete. That produces a free-flowing micro-concrete able to fill gaps and voids of thickness greater than 50 mm. Designed to provide consistent high strength micro-concrete suitable for concrete repairs at nominal thickness 50 – 200 mm.



- Structural repair of deteriorated concrete work in precast elements.
- Base plates grouting where thickness exceeds 100 mm.
- Re-profiling of damaged concrete sections.
- Micro-concreting in bridge and road maintenance operations.
- Repair in areas where reinforcement is congested.

# WHITE SAND

Construction Chemicals

Construct your dream !

## WHITE SAND PLUG

A rapid setting, ready mixed hydraulic cement-based mortar. chemically designed to withstand continual exposure to water, even under continuous pressure. stops running water or seepage through cracks or holes in concrete and masonry structures.

- To plug leaks in concrete and masonry surfaces.
- To prevent seepage.
- Stop leaks in basements, foundations sewer pipes, and manholes.
- Emergency repair of ruptured water pipe, damaged boat hulls.
- Sealing wet surfaces.





# WHITE SAND

Construction Chemicals

Construct your dream !

## Non-structural Repair Solutions

### WHITE SAND CRACK FILLER

Cement-based, polymer-modified. Non-structural repair and crack filling compound for cement-based substrates. easily mixed with clean water to produce a creamy consistent paste.

to fill and render surface shrinkage and static joints on plastered surfaces prior to leveling and smoothing before coating application.





Construction Chemicals

Construct your dream !

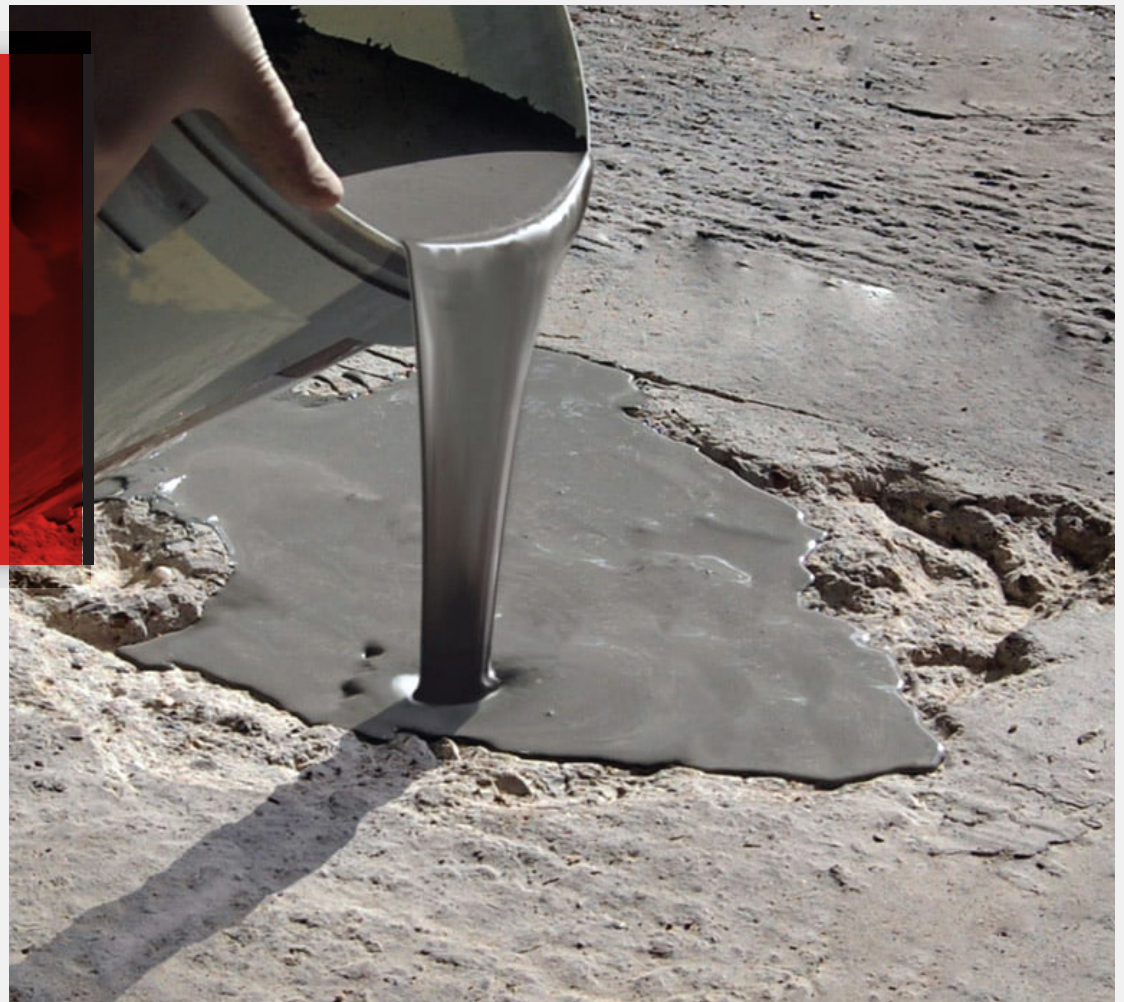
## Epoxy-based Repair Systems

### WHITE SAND REP EP 150

#### Epoxy-based Structural Repair Mortar

A three-component, solvent-free epoxy-based mortar, formulated to provide a permanent structural concrete repair mortar with high chemical resistance properties and excellent abrasion resistance.

- Repair of spalled concrete beams, columns, panels, and piers.
- Repair of reinforced concrete without adequate cover to reinforcement.
- Filling holes and leveling worn and damaged surfaces.
- Patch repair to existing epoxy resin mortars.





# WHITE SAND

Construction Chemicals

Construct your dream !

## WHITE SAND EPF 50

### Epoxy-based Fairing Coat

Two-component solvent free Epoxy-based fairing coat and blowhole filler. Specially formulated to meet mechanical stress.



- Filling blow holes.
- Eliminating minor irregularities prior to epoxy coating or lining.
- Fairing slightly damaged concrete.
- For repair of structures that will be permanently submerged in water.
- As an adhesive for bonding prefabricated concrete segments.

## Priming Solutions

### White Sand Prime RC

is an acrylic bonding agent and primer for cement-based repair systems.

Suitable for interior and exterior use, designed to bond repair mortar and new concrete to old without the laborious scarification process which is usually necessary.

White Sand Prime RC has the ability to withstand humidity and temperatures and can be applied over damp or dry surfaces White Sand Prime RC is not affected by alkalinity of lime plaster or Portland cement.

- Bonding agent for cementitious repair systems
- Bonding agent over concrete and masonry surfaces to improve adhesion and reduce suction.
- Bonding agent when application is to be made over dense concrete or masonry.





# WHITE SAND

Construction Chemicals

Construct your dream !

## White Sand Prime EPZ

A high-quality zinc-rich primer/coating containing high percentage of pure zinc and organic binder. White Sand Primer EPZ bonds to clean iron or steel surfaces to provide protection against corrosion and prevent rust creepage through galvanic action.



- Primer for steel reinforcement of concrete as a component of WHITE SAND Repair System.
- Mining and marine equipment.
- Can be used as a primer or self-finish for topcoat.
- Protection of air conditioning units, fences, gates, etc.
- Compatible with WHITE SAND Cement-based Repair System.

# WHITE SAND

Construction Chemicals

Construct your dream !



صناعة  
سعودية



[www.whitesand.sa](http://www.whitesand.sa)

[info@whitesand.sa](mailto:info@whitesand.sa)

White Sand Co. for Industry