

# Winchelsea Star

Price \$1

Your Weekly Community Newspaper

Since 1977

Vol 48 Ed 05

Tuesday 11 February

[winchelseastar.org.au](http://winchelseastar.org.au)



Winchelsea Probus Club visits beautiful Barwon  
Park Mansion on Inverleigh Road Winchelsea

# BOGGED

IN WINCH

MENS NIGHT WITH MARY O'BRIEN

MARCH 18TH

6.30-8PM



Scan the QR Code to  
book your ticket! For  
you, and a mate!



Supported by Winchelsea Community House  
+ Geelong Mens Society

THE  
Vitality  
MOVEMENT  
ARE YOU BOGGED MATE?

"I promise you there is always a way out  
of the bog hole and there are plenty of  
people ready to help you. Don't choose a  
permanent solution for a temporary  
problem. We have already lost too many  
good men".

©Mary O'Brien 2018



A Men's only Health night with Mary O'Brien, the founder of 'Are you bogged mate' a movement aimed at helping connect country men with support services and break down the stigma associated with seeking help around mental health.

"After spending her whole life working in rural and remote Australia, Mary knows country blokes. She's worked with them, for them, and beside them and mostly importantly she knows how to talk to them. This unique perspective inspired the launch of Are you bogged mate?"

Join us for a moving conversation with Mary Tuesday 18th March 6.30-8.30pm and let's change the way we approach men's wellbeing.

**FREE to attend. Nibbles and drinks provided.**  
**Men only (this is at the request of the speaker for the benefit of the men attending)**  
**Bookings ensure catering needs are met**

**This event is brought to you by The Vitality Movement  
by One Body Chiropractic supported by 'The Gentlemen of Geelong'.**

## The skills you already have, can help you make a positive impact as a Prison Officer.

Discover a rewarding and secure career  
as a Prison Officer. Apply now at  
**Western Plains Correctional Centre, Lara,**  
and receive an \$8,000 sign on bonus\*.



**Corrections  
Victoria**

**Hiring now**

\*Conditions apply.



Authorised by the Victorian Government,  
1 Treasury Place, Melbourne



# Winchelsea pool officially re-opens 27 February 2025

Free admission from day gates open until end of family fun day on Sunday 2 March

Surf Coast Shire



Winchelsea community members are preparing to make a splash in their \$8.9 million new pool.

A formal opening ceremony for the pool will be on Thursday 27 February and Surf Coast Shire Council is working hard to open gates to the community several days earlier, pending progress of final commissioning processes.

Council will confirm the open-to-the-community date via [surfcoast.vic.gov.au/WinchelseaPool](https://surfcoast.vic.gov.au/WinchelseaPool) and social and other media during the next fortnight.

Admission will be free from the day gates open until close of a free gala family fun day on Sunday 2 March.

The redeveloped Barwon Terrace site features new 25m and leisure pools with heated water, pavilion, a splash park, shelters, landscaping, barbecue, water fountain and plant room.

Mayor Mike Bodsworth encouraged community members to enjoy making a splash and taking a first look at the new facilities.

"Council is proud to be delivering this wonderful, state-of-the-art community asset which has been fully funded through Council's asset renewal program," Cr Bodsworth said.

"We look forward to having people from Winchelsea community coming together to celebrate during the free opening days and at the free family day, and seeing the pool deliver health and wellbeing benefits and fun times for people of all ages and abilities for decades to come.

"The previous pool opened to the public in February 1963 and served the community for 60 years. Now we look forward to a new era, with the new facilities being loved and valued just as much."

The free family fun day will run from 10am to 5pm on 2 March, featuring entertainment, sausage sizzle, fun activities, giveaways and games.

The new pool season will run until 30 March, with gates open 3pm to 7pm Monday to Friday and 10am to 5pm on weekends.

The former pool was decommissioned in March 2023 having reached the end of its serviceable life.

Input from almost 300 people helped shape designs for the new pool, including addition of the splash park.

**For more information visit [surfcoast.vic.gov.au/WinchelseaPool](https://surfcoast.vic.gov.au/WinchelseaPool).**





## Request for Tender Hospital Auxiliary Opportunity Shop - Redevelopment Works

Tender Number: A2025-02

Hesse Rural Health is seeking a suitably qualified and experienced Contractor to undertake redevelopment of a retail site in Winchelsea. The Works are to be completed in accordance with the directions provided in the Tender Conditions, including the Specification.

For a copy of the tender documents please visit <https://www.tenders.vic.gov.au/tender/search/> searching in the 'Issued By' field under Hesse Rural Health. Submissions close 2:00PM, Thursday 6 March 2025.

**Note:** The lowest or any submission will not necessarily be accepted.



**RICHEARTH**  
**WE CREATE BEAUTY.**  
**LANDSCAPING AND EARTHEN BUILDING**

**COST EFFECTIVE**  
**FRIENDLY SERVICE**

✓ **TRUST US FOR PROFESSIONAL AND RELIABLE SERVICES TAILORED TO YOUR NEEDS**

Plan, dig, load, move, build, spread, mix, plant, cover, cut, mow, snip, edge & rake

Call Richard today! ☎ 044 451 3017 ✉ Lightravels@gmail.com

Yoga at the Winchelsea Shire Hall  
8am Saturday Morning Flow

With Lisa

Classes start Feb 8th



7pm Tuesday evening Vinyasa  
With Kate

Classes start Feb 11th

\$20 per class when you sign up for the term. Come into Winch House or email [shirehall@winchhouse.org.au](mailto:shirehall@winchhouse.org.au) to book your spot.



- ❑ LOG BOOK SERVICE
- ❑ AUTO ELECTRICAL
- ❑ TOWING
- ❑ AIR CONDITIONING
- ❑ CLUTCH & BRAKES
- ❑ TYRES
- ❑ WHEEL ALIGNMENT
- ❑ BATTERIES

**CAR, TRUCK REPAIRS  
& Roadworthys**

**PH: 5267 3001**

**Mob: 0417 137 457**

**17 Alsop Drive**



# Winchelsea Probus Club visits Barwon Park Mansion

Story Linda Carter  
Photos Kelvin Russell

## Winchelsea Probus Club's first meeting for the year was held at Barwon Park

Many thanks to Claudette for inviting us.

Right on cue at 10 o'clock just as the meeting was about to start we had a downpour of rain which was deafening on the roof so we paused for a cuppa waiting for it to stop.

After the meeting we were able to wander around the elegant and fascinating mansion. Even after several visits there is always something new to discover. If any one hasn't been I strongly recommend a visit to this wonderful jewel in our lovely town, and the history of the Austin's well worth exploring.

Following that most of us enjoyed lunch at the Bottom Pub. A great way to start the year



## Barwon Park is an imposing bluestone mansion set in a sweeping rural landscape

When pastoralist Thomas Austin and his wife Elizabeth entertained the Duke of Edinburgh, who was the second in line to the British throne, it became obvious that grander accommodations were required. They decided to build a new house. H.R.H. Prince Alfred visited Victoria two more times, but the house, unfortunately, remained unfinished.

Built between 1869 – 1871, the Austin's owned one of the largest homesteads in the Western District. The lavish 42 room mansion was built of basalt and decorated with a unique cast iron verandah and balcony.

Thomas Austin died just eight months after the house was completed, but Elizabeth lived at Barwon Park for many years and became a noted philanthropist, founding the Austin Hospital and Austin Homes, Geelong. The house then passed into the hands of the Batson family who later bequeathed it to the National Trust.

Barwon Park continues to impress visitors with its magnificent entrance hall and pink and white interiors. On open days, tours run hourly: 11am, 12pm, 1pm, 2pm and 3pm (last tour), led by National Trust Guides. Entry to the Mansion is by guided tour only. The extensive grounds also offer plenty of space to enjoy a picnic with family and friends.

### Opening Times

September to May Wednesday & Sunday 11:00am-4:00pm.  
June, July & August Last Sunday of Month 11:00am-4:00pm.

Entry to the Mansion is by guided tour only. Tours run on the hour: 11am, 12pm, 1pm, 2pm and 3pm

### Admission

Adult: \$15, Concession: \$10, Child: \$5, Family (2A + 2C): \$30  
National Trust Members receive FREE general entry.  
Tickets can be purchased on arrival.

<https://www.nationaltrust.org.au/places/barwon-park/>



# Community Satisfaction Survey 2025

## On Now



**Random phone interviews with 600 Surf Coast Shire ratepayers are taking place until mid-March for the Local Government Community Satisfaction Survey.**

The annual survey which takes about seven minutes to complete provides us with feedback to help understand community perceptions about council, and identify improvement opportunities.

The Local Government Community Satisfaction Survey is carried out by the Victorian Government.



## Winchelsea Community Foodbank

**Fridays, 12 - 2PM**

**30-32 Hesse Street Winchelsea**



Food relief for our community.

For more info, contact Tess  
healthpromotion@hesse.vic.gov.au  
0417 848 292



**Strength, Mindfulness and Martial Arts in Winchelsea**

**Boxing** NEW!  
**Kids Kung Fu**  
**Group Exercise**  
**Personal Training**  
**Qi Gong**  
[sunnygym.com.au](http://sunnygym.com.au)

## GREAT Bundle Deal on Bosch Hot Water... FROM ELGAS

Buy any Bosch Bluetooth continuous flow hot water model - 16Litre, 20Litre or 26Litre and **Receive \$100\* in Elgas bonus LPG gas credits**

\*For more details: [www.elgas.com.au/appliances/bosch-continuous-flow-16-20-26-lpg-bundle-sale](http://www.elgas.com.au/appliances/bosch-continuous-flow-16-20-26-lpg-bundle-sale)



**AND... for new customers, an additional \$80 WORTH OF LPG GAS CREDITS\*\* when you open a new LPG Gas account with Elgas**

\*\*Further details can be viewed at: [www.elgas.com.au](http://www.elgas.com.au)



Ask about the Elgas Easy Payment Plan - 12 months interest free\*\*\* on selected LPG appliances  
\*\*\*Further details can be viewed at: [www.elgas.com.au/epp](http://www.elgas.com.au/epp)

Automatic tanker gas bottle refill **OR** gas bottle exchange  
refill is available for home or business....  
Call today or visit our website for our many customer benefits and latest offers

**131 161**  
[www.elgas.com.au](http://www.elgas.com.au)

**ELGAS**

## NATURAL GAS CONNECTIONS

**M. & L DRAYTON PLUMBING SERVICES**

**YOUR LOCAL LICENSED**

- PLUMBERS (24356)
- GAS FITTERS
- GAS CONVERTERS
- CARBON MONOXIDE TESTING

**MARK 0428 520 142**

## BARWON SOUTH WEST AG NEWS

### Talk the Talk in Inverleigh

Talk the Talk is a FREE interactive 2-hour session delivered by the Rural Financial Counselling Service Victoria West.

It is aimed at helping farm service providers, farmers and farming families recognise mental health problems and provide support.

You will learn about observation, what to say, how to say it and what to do next.

A light lunch will be provided on the day.

**INVERLEIGH**

**DATE: Friday 14 February**

**TIME: 10 am - 12 pm**

**LOCATION: Inverleigh Bowls Club, 20 Railway Street, Inverleigh.**

### Important step to protect cats and wildlife

The Victorian Government is improving the health and wellbeing of domestic cats and protecting our unique native wildlife with the launch of the state's first cat management strategy.

The strategy addresses the challenges of unowned and semi-owned cats, which make up most of the cat intake at shelters.

It will look at ways to promote full and responsible ownership of these cats and target programs to capture, desex and rehome.

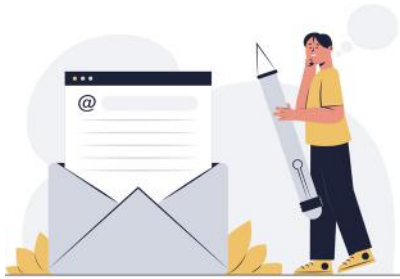
Feral cat management is another key focus.

The strategy will improve information sharing between councils with successful cat management strategies and deliver more flexible registration options.

Importantly, the strategy recognises that cat management is a shared responsibility between councils, the State Government, community members and animal welfare organisations.

To read the cat management strategy, visit [agriculture.vic.gov.au/livestock-and-animals](http://agriculture.vic.gov.au/livestock-and-animals).





# Letters to the Editor

## Volunteering at Blaze Aid

**Yvonne and Geoff Orchard**

We enjoyed reading Tony Phelps article re his stint helping at Blaze Aid last week. It brought back many memories of our experience helping at Blaze Aid in Bruthen, on Eastern Vic. in March 2020.

Geoff was welcomed with open arms, to use his professional skills, and service the 40 odd chainsaws, etc. and teach the volunteers how to use them. Geoff also helped with the fencing.

I was wondering what I could do, and found myself in the kitchen helping prepare and serve meals with an ex chef from the Grand Hotel at Queenscliff. I grew up in Queenscliff so we had that in common.

One day I made and cooked pancakes for all, when the chef was stumped on what to serve for sweets, I cooked over 80!

There were other grey nomads and backpackers there too, giving the latter somewhere to go as the pandemic reared its ugly head. We found the experience very humbling as we heard stories of devastation and heartache, alongside those of triumph and restoration.

We would thoroughly recommend the experience to anyone who could spare the time. We were eventually sent packing as COVID guidelines wouldn't allow over 70s.



Some photos us at Bruthen

## Response to Dan Tehan's press release last week

**Mary Cotter**

The press release by the Member for Wannon, Dan Tehan, published in The Winchelsea Star on the 4th Feb, raises concerns about road safety and infrastructure funding under the Albanese government. While it's true that road fatalities have increased, attributing this solely to the current federal government's actions is very much clutching at straws, and demands a more nuanced examination.

Mr Tehan claims that fixing roads is his "number one priority", and in his maiden speech to Parliament in 2010 he also said that he was elected to fix the roads. But let's be clear: he has represented Wannon for 15 years, and the Coalition was in government for nearly a decade of that time - if roads were truly his top concern, why are they still in such poor condition?

Instead of taking responsibility for this failure, he tries to shift blame to the current federal government despite the condition of local and regional roads being primarily the responsibility of state and local governments. The Federal Government provides significant funding support, but it is not responsible for project selection, much less day-to-day maintenance. With the roads in Wannon deteriorating further, the Opposition should be questioning the Victorian State Government, not using road safety as a political football.

The call to cancel the Suburban Rail Loop to fund rural roads is a false choice. Public transport investment is essential for reducing congestion, lowering emissions, and improving urban mobility. It does not come at the expense of road safety funding.

If Mr Tehan couldn't fix roads during almost ten years with a Coalition government in power, why should voters believe he'll do it now?

## Name of Winchelsea Shire Hall

**Jenny Mathison**

As an involved resident of Winchelsea for 54 years, can anyone tell me when the name of the Winchelsea Shire Hall was changed, or was it?

It still has the name on the outside, Winchelsea Shire Hall, and to those who live here, it really has history enough to still honour it with that name.

I was confused this week when I saw an event to be held at Old Winchelsea Shire Hall. No... it is just the Winchelsea Shire Hall. Renovated and thriving with activities.

Another event advertised this week, referred to an event to be held at Winchelsea Community Hall. While the address which was added did tell me it was 28 Hesse Street Winchelsea (and I might add, looks like a great Mens event, called Bogged ) I still don't understand why people have changed it from the name on the building, Winchelsea Shire Hall. Please, let's be consistent.





# Anywhere. Anytime. Anyone.

Police are out there to keep you safe. If you still choose to take risks while driving and break the road rules, chances are you will be caught.



# The devastating cost of a dry summer - dead fish floating on the billabong on Deans Marsh Road

Judy Cameron

There is a lovely billabong, with a central island, off the Barwon River beside the Winchelsea-Deans Marsh Road. I have seen swans raise cygnets there.

I took this photo of pelicans in early January. The water level had already dropped as sheep can be seen on the island as there was a shallow area they could wade across to get much-needed grass.

Last week I took these photos showing the water level had dropped so low the surface of what was left was littered with dead fish.





# Changes for your kerbside FOGO bin

Council's compost contractor has made some changes to the items you can put in your kerbside FOGO bin.

**These items are no longer accepted in your FOGO bin:**



**pet poo**

(even inside 100% compostable bags)

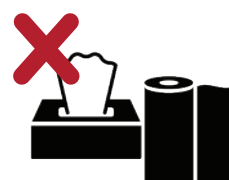


**kitty litter**

(even litter made from recycled paper or wood)



**teabags**



**tissues**

and large amounts of paper towel

**Put pet poo, kitty litter, teabags, tissues and large amounts of paper towel in your landfill bin (red lid).**



**paper**

e.g. shredded paper, paper bags, office paper, wrapping



**cardboard**

e.g. boxes

**Clean paper, cardboard boxes and packaging goes in your recycling bin (yellow lid).**

**Never put bags of rubbish or plastic bags in your FOGO bin.**



[surfcoast.vic.gov.au/FOGO](http://surfcoast.vic.gov.au/FOGO)



## Yoga at the Winchelsea Shire Hall

7pm Tuesday evenings

**Vinyasa**

With Kate



\$20 per class when you sign up for the term or \$23 for a casual Class.

## 8am Flow Yoga

**SATURDAYS**

With Lisa



\$20 term pass or \$23 Casual Classes

## WINCHELSEA RE-LOVED MARKET AT THE SHIRE HALL



**NOW TAKING  
BOOKINGS!**

Email:  
[shirehall@winchhouse.org.au](mailto:shirehall@winchhouse.org.au)  
 for more information



**2pm every Wednesday during in School Terms**

All Pre-School aged children welcome.

FREE, no bookings required.

## Winchelsea Knitting Group

**Thursday Mornings**

**10.30 – 12pm**

All welcome, Learn to knit or bring a project to work on whilst enjoying a cuppa and a chat at

## Tai Chi

**Friday Mornings**

**9.00am – 10.00am**

In the Helen Verity Room,  
 Winchelsea community house

**\$10 per session**

## Chatty Cafe

**Fridays 10.30pm – 12.30pm**

**"Sip, Chat, Share, Care"**

Winchelsea Shire Hall

Everyone Welcome, Collection tin for donations.

## Crochet Group

1.30pm in the Winchelsea Community Centre

Every Second Saturday

Next class February 22nd

**\$5 per class**

The Winchelsea Community House aims to provide a space to connect with others in our community through a wide range of programs and activities.

There are many opportunities to learn new skills or further develop existing ones for fun, for your resume or for your confidence and mental health.



THE  
WINCHELSEA STAR  
ORGANISATION INC.

Winchelsea  
Star



## CORRECTION

To avoid any confusion Sam Inglis did not receive the OBE (Order of the British Empire) A very prestigious award appointed by His Majesty.  
dWhat he did receive was the OBE (Over Bloody Eighty) award from the Lions Club for turning eighty!!!! Apologies for any confusion.

## Winchelsea Star Production Meeting

**Saturday 22 February 2025 9-10am**

Everyone is invited to come along to a monthly meeting - with coffee of course - on the last Saturday of each month @ Sweet Thyme, Winchelsea.

Your comments or suggestions, feedback, ideas for stories or coming events are welcome - or simply to say Hi!



## This Week's Winchelsea Star

Editor - Judy Cameron

Designer - Susan Corby

**send your stories**  
**news@winchelseastar.org.au**

## LOCAL NEWS and ARTICLES WELCOME

Include name and address of the sender  
Email news@winchelseastar.org.au  
Leave hard copy at IGA Supermarket

## DEADLINE 5pm Fridays

4pm Sundays - hard copy articles left at IGA

6pm Sundays - sports results and weekend events

## ADVERTISING

advertising@winchelseastar.org.au 0408 102 802

## free digital subscription

winchelseastar.org.au

## JOIN US ON

## FACEBOOK

facebook.com/TheWinchelseaStar

## production

**Editors:** Cerrie Forgan, Yvonne Stevens, Judy Cameron  
**Advertising:** Sasha Gauntlett, Neil McInnes  
**Design:** Susan Corby, Tony Phelps  
**Printed by:** Winchelsea Community House  
**Website by:** Winch Websites

## committee

**President:** president@winchelseastar.org.au  
Neil McInnes  
**Treasurer:** treasurer@winchelseastar.org.au  
Cathy Cheadle  
**Secretary:** secretary@winchelseastar.org.au  
Tony Phelps  
**Members:** Mick O'Mara, Linda Carter, Susan Corby  
Sasha Gauntlett, Judy Cameron,  
Yvonne Stevens, Cerrie Forgan



© Winchelsea Star Org. Inc. All rights reserved  
Winchelsea Star Organisation Inc.  
Reg. No. A0053999F ABN 75 941 529 279  
winchelseastar.org.au PO Box 5 Winchelsea 3241

Views expressed are not necessarily those of the Winchelsea Star or Committee. The Winchelsea Star reserves the right to edit or not publish any article.



# Winchelsea Star COMMUNITY NOTICEBOARD

email editor@winchelseastar.org.au or  
leave at Winchelsea IGA

## WANTED QUIET WORKING SPACE WITH PIANO

for music student. Several hours per week. Ph 52 672 987

## FOR SALE

2 x Whipper Snippers \$25 each  
1 x Lawn Mower \$25  
1x Small Generator \$50  
1x Pentax Digital camera \$150 - paid  
\$700 (7.0 megapixels, 5x optical zoom)  
OR \$200 FOR THE LOT.  
Contact: 52672954

## LIONS CLUB

Environmentally friendly  
compressed paper bricks for your fire.  
Save on the rising cost of wood.  
Pack 4 bricks \$5 - Roll small rolls \$2  
Contact Alan 0476 475 422

## WINCHELSEA PICKLEBALL

Winchelsea Leisure Time Centre  
Wed 7-830pm or Thurs 10-11.30am.  
All equipment supplied,  
wear suitable footwear.  
Lesley Mathison 0438 672 197

## WINCHELSEA TENNIS CLUB

### JUNIOR COACHING

Mondays from 3.30pm  
with experienced Nicole Mullen, \$10

### SOCIAL TWILIGHT TENNIS

Monday evenings from 6.00pm.  
All Welcome!

## CUBS AND JOEYS

For more information,  
or to get involved, contact  
Marie McPadden – 0409330147 or  
mcpadden630@bigpond.com

## WINCHELSEA GIRL GUIDES

Winchelsea Guides are seeking female  
adult volunteers. Help us provide a  
stimulating program giving leadership  
development opportunities for girls, as  
well as providing fun and friendship.

Phone Yvonne 0448 672630



Social Bridge is played

### EVERY TUESDAY

**NEW TIME 10 AM - 12 NOON**

SENIOR CITIZENS CENTRE  
36 Harding Street Winchelsea

***New players always welcome***

Elaine Atkinson 0458 009 616

## DIAMOND DOT

Next Diamond Dot day  
Saturday February 8 11am till 4pm,  
Senior Citizens Rooms, Harding St.  
\$5.00 entry.

Afternoon tea supplied,  
New stock available for sale.  
See you there.

## FOR SALE - SINGLE BED

Comes with mattress.  
New wooden  
underlay and mattress protector  
No stains on mattress  
\$50 pick up winchelsea  
Ph Tracey 0427500649



## ZUMBA DANCE WITH SIMONE

Zumba Fitness  
& Gold classes available  
@ Winchelsea's Globe Theatre  
Mondays & Wednesdays  
6:30pm-7:30pm  
\$15 per class or  
\$25 for two sessions.  
ALL ARE WELCOME TO JOIN!  
Simone Dunmore – 0468 375 036 or  
ZumbawithSimone09@gmail.com

**Garage Sale  
Clearance Sale  
Saturday February 15  
Sunday February 16  
9am till 4pm both  
days  
Stacks of new  
everything  
As well as some well  
loved.  
Don't miss it.  
43 Armytage St  
Winchelsea**



**BEAR  
4 Year Old  
Retired  
Greyhound  
FREE  
To  
Good Home**

Bear is a very friendly  
and easy going male dog.  
He is vaccinated (up to June 2025),  
desexed and has a dental clearance.  
Bear has no fleas  
and is regularly wormed.  
Pet Exchange Register: Source number:  
EE271567  
Microchip Number: 956000010897457  
**Les 0439 103 606**

# Winchelsea Community Market



FIRST SUNDAY OF EACH MONTH

2 March 2025

6 April 2025

4 May 2025

1 June 2025

## WINCHELSEA HOSTEL AND NURSING HOME SOCIETY INC

### ANNUAL GENERAL MEETING

Notice is hereby given that the 2023/2024 Annual General Meeting for the General Public will be held at the Old Winchelsea Shire Hall on Monday 24th February, 2025 at 7pm.

Please contact Hesse on (03) 5267 1200 or [reception@hesse.vic.gov.au](mailto:reception@hesse.vic.gov.au) to confirm your attendance.

### BUSINESS

1. To confirm the minutes of the 2023 Annual General Meeting and the Meeting of Members on 10 February 2025.
2. To receive the report of the Committee of Management and the audited Statements of Accounts for the year ended 30 June 2024.
3. To approve the amendment of the Association's Statement of Purposes.
4. To approve the transfer of all Association assets and land to Hesse Rural Health.
5. To appoint the Victorian Auditor General's Office as auditor.
6. To elect officers of the Association and members of the Committee.

Carissa Brock | Secretary



Café La Hoot

have you tried  
'owl' coffee?

1 willis st [cafelahoot@gmail.com](mailto:cafelahoot@gmail.com) 0407 528 999

# RACV reminds drivers of road safety around schools

RACV



The Victorian school year resumes this week, with more than a million students expected to walk through school gates in 2025. The return to the classroom serves as an important reminder for all road users, not just parents and carers, to be alert for children when driving and understand the road rules around school zones.

According to the Transport Accident Commission (TAC), around seven children aged 0 to 15 die each year on Victorian roads.

RACV General Manager Mobility Julia Hunter encourages everyone to do their part to make school zones safe. "School zones are crucial areas where road safety must always be top of mind. Children are at risk around roads because they are less visible, and have a reduced ability to judge time, speed and distance," said Ms Hunter.

"RACV is encouraging parents and carers to plan ahead, and where possible, consider parking further away from the school, as congestion increases the likelihood of collisions. Consider walking or riding with your children to school while demonstrating safe behaviours. This includes using children's crossings or zebra crossings, meeting children on the same side of the road, and being bicycle safe.

"Children aged 12 and under, as well as accompanying adults, are allowed to ride on the footpath in Victoria. All children and adults riding on the footpath must still wear a helmet. Parents may think that providing their child with an e-scooter may help with the school commute and congestion, however these are in fact illegal for children under 16 to use on our roads and footpaths."

Some school speed zones are permanent and in effect 24/7, while other school speed zones are only operational during certain hours and days. These time-based school speed zones are usually in effect between 8.00am to 9.30am and 2.30pm to 4.00pm weekdays during Victorian school terms (excluding public holidays).

School speed zones are usually reduced to 40km per hour on roads where the regular speed limit is less than 80km per hour. Where the regular speed limit is 80km per hour or more, the school speed zone usually reduces the limit to 60km per hour.

RACV has the following advice for drivers during school pick-up and drop-offs:

- Stay alert: Be patient, aware, and exercise caution when driving through school zones. There will be a lot of excited children walking and riding around roads, car parks and driveways, especially during the busy pick-up and drop-off times.
- Observe speed limits: Keep a keen eye out for change of speed limits and reduce your speed before entering school speed zones.
- Reduce distraction: Ensure that mobile devices and other distractions are out of reach or turned off while driving.
- Be mindful of school buses: Give way to a bus moving into the traffic and be careful of children exiting and entering buses.
- Consider parking further away: Park your car a few blocks away and walk to encourage a more active lifestyle, while helping to alleviate congestion.
- Consider turning your engine off: Don't idle your engine as you wait. Studies from around the world suggest idling engines in traffic and around schools are detrimental to children's health.
- Use children's crossings or zebra crossings: Look out for the bright orange 'children crossing' flags. Whenever those flags are displayed, road users must stop for any pedestrians waiting to cross. This applies regardless of whether a crossing supervisor is present. Remain stopped until the crossing is clear and do not block crossings.

**For more information on road safety around schools visit [racv.com.au](https://www.racv.com.au)**

Since 1903, RACV has been one of Australia's most trusted brands and is the largest member organisation in Victoria.

RACV is proud to provide exceptional experiences for our members and customers through a range of products and services across motoring and mobility, home, energy and leisure. These include emergency roadside assistance, motor insurance, home insurance, home trades and an increasing range of options in the cleaner energy space, such as RACV Solar. We have 10 clubs and resorts across Australia and offer a range of domestic and international holiday packages, tours and cruises from our trusted travel partners.

## Nominations open for women's honour roll

The Victorian Government is recognising women who have made outstanding contributions to Victoria through the Victorian Honour Roll of Women.

Victorians are encouraged to nominate women from all walks of life, cultural backgrounds and age groups to be recognised across four categories – Local Champion, Change Agent, Emerging Leader and Trailblazer.

The Victorian Honour Roll of Women celebrates the outstanding contributions made by Victorian women and acknowledges the many ways in which they make lasting contributions to the community. The Honour Roll celebrates their achievements across fields such as social justice, health science, research, arts, environment, law, media and education.

Last year's 21 Honour Roll inductees included folk musician turned Federal-Court judge Judy Small AM, renowned endocrinologist Associate Professor Ada Cheung and Yorta Yorta artist and cultural practitioner, Aunty Rochelle Patten. More than 750 women have been inducted since the Honour Roll of Women began in 2001.

**Nominations close on Sunday 16 March. To find out more and nominate yourself or someone you know, visit [vic.gov.au/honour-roll-women](http://vic.gov.au/honour-roll-women).**

## New grants boosting women's health research

For decades, research into health has left women out – because women were seen as too unreliable to participate due to menstruation and hormonal fluctuations.

Now, the State Government is bridging this gap, with a new grants program to advance the understanding of how disease and other health issues effect women – also further cementing Victoria's reputation as a global leader in medical research. The dedicated women's medical research grants program sees \$1.5 million Women's Health Research Catalyst Grants open to the sector's best and brightest to apply.

Grants between \$50,000 and \$150,000 will be awarded for one-year research initiatives specifically focused on sex and gender comparisons and underfunded or under-researched conditions impacting women.

While all areas of health and medical research will be considered, some target areas have been identified as requiring greater understanding of the influence sex and gender have on these conditions – acknowledging that for women they can be experienced very differently to men. These key areas include sexual and reproductive health, cardiovascular health, oncology, orthopaedics, and chronic pain, among others.

Eligible applicants will need to be from a Victorian Administering Institution and undertaking research in a health and medical field, including discovery, pre-clinical, clinical or lived experience.

This transformation to women's health is also delivering 20 new women's health clinics, expanding our sexual and reproductive health hubs network, doubling the number of laparoscopies for endo and associated conditions and providing scholarships for more than 100 women's specialists.

**For more information, please visit [health.vic.gov.au/catalyst-grants-womens-health-research-priorities](http://health.vic.gov.au/catalyst-grants-womens-health-research-priorities).**

## WANTED Winchelsea Girl Guides needs girls

We welcome girls 6-15yrs.

We meet Mondays 4.30 pm-6pm  
at St John's Catholic Church Winchelsea  
during school term.

Guiding provides fun, friendship, and adventure.  
Developing teamwork, and leadership skills,  
whilst girls achieve goals, improve communities  
and grow in confidence.

Many of our girls were from Moriac  
so a Unit has been opened at Modewarre to cater for them.

We also had 4 travelling up from the coast,  
and now they attend secondary school in Geelong  
so they have transferred to a Geelong Guide Unit.

**If interested, girls can attend 2 free sessions.  
We commence on Mon 3 Feb,  
girls are welcome to come along and try.**

Enquiness contact Yvonne Orchard ph 0448 672 630  
Or Lily Dell Rennie ph 0428 936 441



We'd love to see you!

# WINCHELSEA PLAYGROUP

Each Thursday during school terms.  
Come along between 10AM - 12PM.  
Check out our Facebook Page for more  
information about the happenings of each  
session.

Playgroup Leader - Danni Menzies  
Email: [winchelseaplaygroup@gmail.com](mailto:winchelseaplaygroup@gmail.com)  
St. Thomas's Hall,  
27-29 Barwon Terrace,  
Winchelsea VIC 3241

**\$5 PER  
FAMILY**  
**INCLUDES  
MORNING  
TEA & HOT  
DRINKS FOR  
CAREGIVERS**

Scan to be  
part of our  
Facebook  
Group





# The Climate Report

Judy Cameron

More depressing news but we can't ignore this (well we shouldn't, looks like lots of media has).

## The rate of ocean surface warming has quadrupled since satellite measurements began

If you're wondering why the last two years were so hot, this is almost half the reason.

Stephen Luntz, Freelance Writer.

This article from ILFScience

The surface waters of the oceans are getting warmer at a rate of 0.27°C (0.50°F) a decade, new research shows. This compares with just 0.06°C (0.11°F) in the late 1980s, when we first noticed there was a problem. Although people are more directly affected by temperature rises on land, higher ocean temperatures drive bigger storms and can cause ecosystem collapse. Hotter surface waters make only a small contribution to sea level rise, except where they come in contact with ice sheets, but if deeper waters get warm they expand, and that has to go somewhere.

For a long time our knowledge of ocean surface temperatures was based on data collected by ships that had considerable inaccuracies, and largely ignored areas not on major shipping routes. That changed when we developed satellites that could take the temperature of the entire surface.

This also means that things are going to get worse a lot faster than it would appear if we just project the average rate of warming over the last 40 years into the future. For example, the authors expect more warming in the next 20 years than in the last 40.

Read the full story at <https://www.iflscience.com/the-rate-of-ocean-surface-warming-has-quadrupled-since-satellite-measurements-began-77817>

## Carbon dioxide emissions to hit 429.6 ppm in May 2025, highest in over 2 million years

To limit global warming to 1.5°C, as outlined in the Paris Agreement, the accumulation of CO<sub>2</sub> and other greenhouse gases in the atmosphere must first decelerate and then reverse. According to the IPCC, this requires the current CO<sub>2</sub> build-up in the atmosphere to slow to approximately 1.8 ppm per year.

The record increase in atmospheric CO<sub>2</sub> concentrations was driven by a combination of factors, including record-high fossil fuel emissions, reduced carbon capture by natural sinks such as tropical forests, and massive CO<sub>2</sub> releases from wildfires, according to a study by the Met Office. When forests burn, they release vast amounts of stored CO<sub>2</sub>.

### What this means

Carbon dioxide in the atmosphere acts as a heat trap, with higher concentrations trapping more heat and gradually raising global temperatures. This leads to increasingly severe impacts, including rising sea levels, more extreme droughts, storms, and floods, as well as harm to wildlife and essential natural systems.

The record-breaking temperatures in 2024, fuelled unrelenting heatwaves, drought, wildfire, storms and floods that killed thousands of people and forced millions from their home.

Read the full story at <https://www.downtoearth.org.in/climate-change/>



## Climate Safe Rooms Launches

After a successful award-winning pilot program in 2021, we are thrilled to launch the Climate Safe Rooms program to Geelong and surrounding regions. The program supports people with complex healthcare needs that become worse during heatwaves and extreme cold.

One room of the home is modified to ensure it does not become too hot or cold during weather extremes - this may include installing insulation, a reverse cycle air conditioner and solar to offset the running costs.

If you are a home care provider, please contact us to see how you can be involved. Or, to find out if you or a loved one is eligible for this program, visit Climate Safe Rooms on the Geelong Sustainability website.

# Winchelsea Churches



## St John's Catholic Church

Father Joseph Panackal  
0404598558  
Harding St, Winchelsea 3241  
MASS TIMES  
6pm Sat. Winchelsea  
FEB. 1, 8, 15, 22

## St Thomas' Anglican Church

Rev'd Phil Jacobson  
0477 672 042  
stthomaswac@gmail.com  
Barwon Tce, Winchelsea  
Service 10am

## Winchelsea Uniting Church

0475 777 301  
uca.winchelsea@gmail.com  
Hesse St, Winchelsea 3241  
Services 9.30am Sundays

## Thought for the Week

"Do whatever comes your way  
as you can.

Think as little as possible  
about yourself.

Think as much as possible  
about other people.

Dwell on things that are interesting.  
Since you get more joy out of giving  
joy to others, you should put a good  
deal of thought into the happiness  
that you are able to give."

**John Bader,**  
Former U/C Accredited  
Lay Preacher

## Dr Megan Vernon will present her findings on Virtual Fencing at the Koroit Agricultural Field Day

### DemoDAIRY Foundation

Virtual fencing is shaping up to be the next big thing in livestock management, according to a researcher who will present her findings at the Koroit Agricultural Field Day on 22 February.

Senior researcher for the Tasmania Institute of Agriculture, Dr Megan Verdon, says momentum for virtual fencing is growing in Victoria but its use is prevented by historic legislation.

Virtual fencing is allowed in Tasmania where more than 20 per cent of farms now use the technology.

"The rules were put in place before anyone thought we could use electrical stimulus to manage cattle," she said. "Now we have this technology but the laws in some states need to be changed to allow it."

Dr Verdon is being sponsored by the DemoDAIRY Foundation to speak at the Koroit Agricultural Field Day. Dr Verdon is being sponsored by the DemoDAIRY Foundation to speak at the Koroit Agricultural Field Day on February 22, to regional farmers and the Southwest Showcase of Dairy Innovation on February 24-25.

Dr Verdon has been researching virtual fencing for eight years but says it's not her role to promote the technology. "The uptake in Tasmania has been amazing and there is a lot of interest around Australia, but my role is to provide data about the benefits or challenges and then leave it up to individual farmers whether or not it's suited," she said. "It's the same with the legislators – I'm focussed on providing the data to help them make decisions."

Her research shows that the technology works and animals are adjusting well to the different management system. "Our research shows that it's not having a negative impact on their welfare," Dr Verdon said.

Current research is seeking to quantify the benefits of virtual fencing. "Some benefits are really clear, such as more precise pasture allocation and nutrition for animals, better land management, protecting waterways and pasture utilisation," Dr Verdon said.

"The technology also has behaviour monitoring abilities with alerts of



abnormal behaviour which could be an early indicator of illness or injury."

Farmers have found it can free up time for more high-value tasks. "We've had farmers say they've gone on holidays for the first time because they can trust this technology," Dr Verdon said.

Dr Verdon said "I believe the technology can offer significant advantages in terms of environmental management, animal monitoring, and in people's lives. But to ensure we achieve all those benefits, we have to make sure it meets societal perceptions and that it's used in a way that works with the animal."

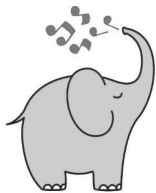
Dr Verdon has been involved with several different research projects, including how the technology works and how animals interact with it, benefits for pastures, labour and cow health and novel applications of the technology.

Her presentation will also cover her research into the use of cow wearables, including collars, ear tags and stomach boluses, to assist herd management.

Innovation technical presentations and workshops will run through the day at the Koroit Agricultural Field Day on February 22 with a series of presentations/workshops in the basketball stadium. DemoDAIRY Foundation is assisting with this activity.

*On Sunday February 23, DemoDAIRY Foundation will host Dr Verdon at a session for farmers east of Warrnambool on both cow wearables and virtual fencing with the time and venue to be confirmed.*

*She will also present at the Southwest Showcase of Dairy Innovation hosted by Food and Fibre Great South Coast at Deakin University on February 24-25.*



**mainly music**  
est. 1990

Fun, Interactive music sessions for  
pre-school children (0-4 y.o.) and  
parents/caregivers

**When:** Mondays from 10 to 11 am  
(runs during school terms)

**Where:** St Thomas' Hall  
25 Barwon Tce.

To Enquire ring: **0407838256**



**5234 6585 0417 385 984**  
*For all your septic tank, grease traps  
and interceptor pits servicing.  
Locally owned and operated*

**Free financial  
counselling with the  
Rural Financial  
Counselling Service**

1300 771 741

AGRICULTURE VICTORIA



 **Lifeline**

**13 11 14**



**Your Taxation  
&  
Superannuation  
Specialists.**

Winchelsea

**5267 2673**

**www.surftax.com.au**

ver 19 10064

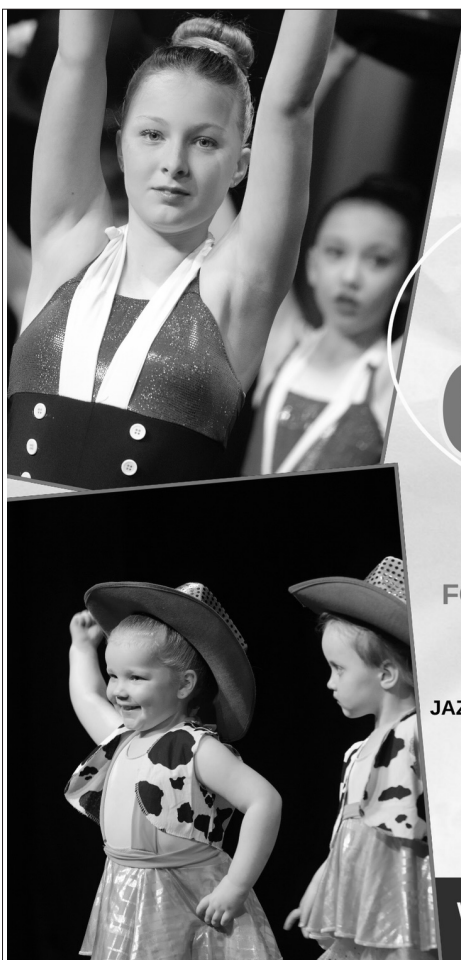
## OZ TREES NURSERY & TREE PLANTING SERVICES

- Affordable seedlings—over 200 species
  - Complete plantation service—farm forestry, shelter, aesthetics
  - Deep ripping & mound ploughing. Rotary bed forming
  - Our experienced staff will help you select species for your site conditions and needs
- Also available—tree planting tools, milk cartons, plastic tree guards & bamboo stakes



569 Warrowie Rd. Colac  
P: 5233 6280 F: 5233 6393  
E: [info@oztrees.com.au](mailto:info@oztrees.com.au)  
W: [www.oztrees.com.au](http://www.oztrees.com.au)  
Open Monday—Friday  
9am—4:30pm

Phone OzTrees for professional advice,



**DANCE  
CLASSES**

**TAKING ENROLMENTS NOW  
FOR OUR WINCHELSEA STUDIO**

**PRE-SCHOOLERS - ADULTS  
CONTROLLED CLASS SIZES  
JAZZ - THEATRICAL TAP - CLASSICAL BALLET  
HIP-HOP - CONTEMPORARY DANCE**

**ENROL TODAY**

**WWW.MELSDANCECENTRAL.COM.AU**

**direct  
TEMPORARY  
FENCING**

**FOR HIRE - SUPPLIED & ERECTED - 7 DAYS  
GEELONG - BELLARINE - COLAC - SURF COAST  
PHONE CAM 0417 310 800**

**DownRyte Excavations**



- Excavations
- Drilling and Piling
- Rock Placement
- Tree and Stump Removal

Sean Hunwick

Mobile: 0409 447 288  
Email: [downryte@activ8.net.au](mailto:downryte@activ8.net.au)

# SOUTH-WEST — PAINTING — GROUP

## Contact us:



0431 719 218



[www.southwestpaintinggroup.com.au](http://www.southwestpaintinggroup.com.au)



[matt@southwestpainting.com.au](mailto:matt@southwestpainting.com.au)

## We specialise in:

- New Homes
- Texture Feature Finishes
- New and Old Cabinetry Coatings
- Commercial Projects
- Maintenance Work
- Residential Work
- Wallpapering
- Pre-Sale Painting
- Timber Decking Rejuvenations

## Winchelsea Men's Shed



For The Community

51 Hesse Street

Every Wednesday from 9:30am

New members always welcome

For more detail contact:  
Ray Atkinson (Co-ordinator)  
0407 839 139

or

[winchmenshed@gmail.com](mailto:winchmenshed@gmail.com)

Need a job done?  
Woodworking jobs,  
furniture repairs, small jobs.  
Drop in and talk to us.

## WINCHELSEA LIONS CLUB

## PAPER RECYCLING

Paper depot rear of  
Senior Citizens Rooms  
Harding Street  
NEWSPAPERS,  
MAGAZINES,  
PHONE BOOKS WANTED



RAISING FUNDS FOR  
OUR TOWN & DISTRICT  
0408 520 606

## Knuckey's Winchelsea Ph: 5267 2011

Knuckey's have in stock a complete range of batteries to suit tractor, heavy machinery, cars, utes

The largest range of the best oil for your vehicles—**CASTROL**—  
*'when only the best will do'*

The largest range of V belts.  
A, B, C, D M Sections  
Bolts and nuts for all occasions  
Steel cut to size



DRIVEWAYS, CARPORTS, CROSSOVERS,  
FOOTPATHS, SHED SLABS, STAIRS  
HOUSE SLABS, EXPOSED, SEALING & MORE

CONTACT ALISTER NOW FOR A QUOTE

📞 0411871950

✉️ [AMACONCRETING1@GMAIL.COM](mailto:AMACONCRETING1@GMAIL.COM)

WINCH WEBSITES  
WEB SOLUTIONS SIMPLIFIED.

## WEBSITES

GROW business  
INCREASE reach  
SAVE time



Find out what a website  
could do for you

[winchwebsites.com.au](http://winchwebsites.com.au)

04 887766 20

# Be on the look out for Brown Marmorated Stink Bug

## Agriculture Victoria

Agriculture Victoria is encouraging all Victorians to keep a look out for Brown Marmorated Stink Bug (BMSB) to help respond to detections near the international ports and ensure the pest does not establish.

BMSB is a hitchhiker pest that tries to cross our borders by hiding inside imported shipping containers, machinery, goods and packaging – especially between September and April.

Throughout this period, Agriculture Victoria staff conduct visual surveillance and deploy traps around detection points to ensure nothing has escaped and established in the environment. This work is undertaken in collaboration with the Commonwealth Government.

More here: <https://agriculture.vic.gov.au/about/media-centre/media-releases/2025-releases/be-on-the-look-out-for-brown-marmorated-stink-bug>

## Recognising BMSB

### Adults

12 mm to 17 mm long  
brown, shield-shaped body  
pale white bands on the antennae  
distinctive black and white banding along body



## Hundreds of regional Victorians sign open letter to the Australian Energy Regulator asking for upgrades to local energy infrastructure

### Farmers for Climate Action



Some 500 regional Victorians have already signed an open letter asking for upgrades to local energy infrastructure, put forward by Farmers for Climate Action - and FCA is asking more people to add their voice.

The open letter is addressed to the Australian Energy Regulator, which must sign off on regional energy infrastructure upgrades such as poles and wires. Farmers for Climate Action is asking those who live on the Powercor Network in Western Victoria, to help fight for a better local network by signing the open letter.

The proposed upgrades include:

- \$50 million to upgrade Single Wire Earth Return lines
- \$2M for energy literacy programs
- \$2.1M for expert energy advisory services
- \$4.8M for community-led renewable energy projects
- \$5.9M for vulnerable customer assistance to support electrification

Powercor has said these investments would increase bills by only \$4 per year.

The open letter follows the Rural and Regional Energy Summit in Bendigo in October 2024 hosted by FCA in partnership with Powercor. The Summit brought together Powercor customers from across Western Victoria to discuss the 2026-31 Regulatory Reset.

FCA CEO Natalie Collard said these upgrades were “a no-brainer”.

“Rural and regional Victorians pay the most for electricity yet suffer from the most blackouts,” Ms Collard said.

“Rural and regional Victoria produces the electricity our cities use, and rural and regional Victoria deserves the same quality of energy service that cities receive - FCA calls on the Australian Energy Regulator (AER) to back these investments to give regional Victorians fair access to a more reliable energy supply.

Ms Collard said upgrading Single Wire Earth Return (SWER) lines was a clear priority from the summit, with a huge push to improve the lines for more than 3,000 customers.

“We hear stories of farmers paying out of their own pocket to fix powerlines because they aren’t getting reliable electricity,” Ms Collard said.

“Storms and bushfires made worse and more frequent by climate change are really hard on rural electricity networks. We need governments to invest in local electricity upgrades to keep the network running properly.”

VFF (Victorian Farmers Federation) President, FCA board member and Quambatook farmer Brett Hosking said, rural Victorians are already making a significant contribution to the renewable energy shift by hosting transmission lines, wind turbines and solar farms, yet we don’t have the infrastructure in our communities to ensure reliable energy to our own homes and businesses.”

“As farmers and stewards of the land we are already focused on how we can continue to produce food and fibre while reducing our emissions, but with the current poles and wires we can’t even charge an electric car.”

“Poll after poll has shown rural and regional people support the energy shift, and we need governments to realise that upgrading our local energy network is part of that energy shift.”

## Victorian State Government

### Australia's first paramedic practitioner laws pass parliament

Legislation to enshrine Australia's first Paramedic Practitioner into law has now passed the Victorian Parliament, paving the way for them to deliver urgent care and prescribe medicines while saving Victorians a trip to hospital.

The Government's Paramedic Practitioners Bill 2024 fulfils a 2022 election commitment, making Victoria the first jurisdiction in Australia to have dedicated legislation to support this role – allowing the delivery of a higher level of care to patients when and where they need it.

Paramedics regularly transfer patients with serious, but not life-threatening, conditions to hospitals. With their new advanced clinical training, Paramedic Practitioners will now be able to assess, diagnose and treat patients in the field, make clinical decisions and take pressure off our busy emergency departments.

The key change will allow Paramedic Practitioners to prescribe and administer scheduled medicines when treating patients, providing Victorians with immediate treatment on the spot.

The first cohort of 30 paramedics is currently progressing through Monash University's nation-leading Paramedic Practitioner master's degree, with a second cohort set to begin in the coming weeks.

Developed in collaboration and consultation with Ambulance Victoria, Safer Care Victoria, paramedics, clinicians and unions,

the free master's degree will see these graduates deployed to regional Victoria in 2026.

Once graduated, the Paramedic Practitioners will be equipped to treat conditions that often lead to hospital visits, such as urinary catheter care, wound care and closure, minor infections, dislocations and fractures.

The Government is also supporting the training of 40 additional Mobile Intensive Care Ambulance (MICA) paramedics, that will see Ambulance Victoria welcome their largest cohort of MICA trainees in history.

### Building better libraries for Victorians

The Victorian Government is delivering better libraries and library programs for Victorians by upgrading libraries, supporting education programs and delivering mobile library vans across the state.

Public libraries are about much more than reading. They provide free services for communities across Victoria, including internet access and education programs – which is why the Government has invested almost \$50 million into 139 library infrastructure projects over the last nine years.

This funding can be used to support library upgrades and services like mobile library vans – reaching readers that would not otherwise have access to library services.

**Grant applications are now open until 14 March 2025.**

## TRENCHES & HOLES PTY LTD.



**PHILLIP ROBERTSON**

☎ **0427 672 945**

**WINCHELSEA**

- General Earth Works
- Driveways
- Trencher
- Kanga Loader
- Grader
- Excavator Work (3.5 & 6.5 Tonne)
- Tip Truck
- Rock Breaker
- Post Holes & Shed Footings

A.B.N 74006896898

### Water Delivery



**WAZZA'S**  
WATER CARTAGE

Stainless Tanker Up to 22,000 ltr loads  
Barwon Water Registered

Domestic & Rural Water Supplies

Call Wazza

Mob: 0428 877 260

Email: wazza@wazzas.com.au Web: wazzaswater.com

### M & L DRAYTON

### PLUMBING SERVICES

REG No 24356 C/A No C02594

- Domestic and Rural Plumbing
- Roofing
- Sewerage & Septic
- LPG & Natural Gas Connections
- Motorised Drain Cleaning
- Backhoe Hire

**Phone Mark 5288 7244**

PO BOX 98 WINCHELSEA 3241

**Mobile 0428 520 142**

# Local medical student leads global initiative to improve healthcare access

## Global Village Project

Winchelsea resident and Deakin University medical student Em Stevens is on a mission to make a difference in underserved communities both in Australia and abroad. As the President of the Global Village Project (GVP), Em and her team (pictured below) are excited to share the organization's impactful plans for 2025.

The GVP is a student-led initiative at Deakin University, inspired by the Fiji Village Project established by the Australian National University in 2007. With a focus on improving healthcare access and education, the project connects medical and allied health students with volunteering opportunities to empower vulnerable communities globally. Our mission is to deliver sustainable healthcare solutions through education, community leadership, and hands-on medical aid.

### Making an Impact Globally and Locally

The GVP collaborates with organizations such as Jacob's Well Foundation in Odisha, India, to address pressing healthcare needs. Through its India Volunteering Program, Deakin medical students work alongside Australian doctors to conduct health checks, administer vaccinations, and promote hygiene practices in local villages, schools, and hospitals. A special focus will also be placed on oral health and nutrition education.

Closer to home, the Northern Territory Volunteering Program supports rural communities by offering health education workshops in primary schools. The program emphasizes cultural sensitivity and provides medical students with invaluable insights into the unique challenges faced by remote healthcare systems.



Global Village Project  
Students empowering communities through medicine

We aim to not only deliver aid but also learn from these communities and support their healthcare goals sustainably.

### How You Can Help

To ensure the success of these initiatives, the GVP is seeking support from the local community. Donations are needed to fund essential health equipment, teaching resources, and medical supplies for the programs. Every contribution will directly assist rural, disadvantaged communities in Odisha, India and the Northern Territory. Together, we can make a lasting impact through education and healthcare.

For those interested in supporting this meaningful cause, donations of money or gifts are greatly appreciated. To contribute, please visit the GoFundMe page linked below or contact Em Stevens in 0408 185 905 directly for more information.

### Join Us in Making a Difference

To donate and learn more about the Global Village Project's 2025 initiatives, please visit our GoFundMe page:

[https://www.gofundme.com/f/global-village-project-in-2025?utm\\_source=copy\\_link&utm\\_medium=customer&utm\\_](https://www.gofundme.com/f/global-village-project-in-2025?utm_source=copy_link&utm_medium=customer&utm_)



2024-25 FEDERAL ELECTION

100,000  
temporary jobs

Promotional resources



**Elaine Atkinson**  
Secretary - Growing Winchelsea

The Australian Electoral Commission (AEC) has 100,000 temporary jobs available across Australia at the next election.

Although the date for the election is yet to be announced, we need to ensure we have the temporary workforce to run the event.

There are jobs available before, on and after election day in metro, regional and remote areas.

We are seeking your help to spread the word about these jobs. All jobs are paid, no experience is required and training is provided.

If you or anyone you know are interested in applying, please visit [aec.gov.au/electionjobs](https://aec.gov.au/electionjobs)





# WINCHELSEA FACEBOOK

## Non-profit community Groups and Pages



What's on in Winchelsea	<a href="https://facebook.com/WhatsoninWinchelsea">facebook.com/WhatsoninWinchelsea</a>
Winchelsea FREE	<a href="https://facebook.com/groups/winchelseafree">facebook.com/groups/winchelseafree</a>
Winchelsea Community Information	<a href="https://facebook.com/groups/207538644446972">facebook.com/groups/207538644446972</a>
Winchelsea Classifieds 3241	<a href="https://facebook.com/groups/216942861684082">facebook.com/groups/216942861684082</a>
Winchelsea Lost and Found	<a href="https://facebook.com/groups/768187693217518">facebook.com/groups/768187693217518</a>
Winchelsea Op Shop	<a href="https://facebook.com/HospitalAuxiliaryOpShopWinchelsea">facebook.com/HospitalAuxiliaryOpShopWinchelsea</a>
Winchelsea Shire Hall	<a href="https://facebook.com/WinchelseaShireHall">facebook.com/WinchelseaShireHall</a>
Winchelsea Community House	<a href="https://facebook.com/winchelseacommunityhouse">facebook.com/winchelseacommunityhouse</a>
Winchelsea Coronavirus Community Support Group	<a href="https://facebook.com/groups/2676957719207927/">facebook.com/groups/2676957719207927/</a>
The Green Winchelsea Residents	<a href="https://facebook.com/groups/515322772623126">facebook.com/groups/515322772623126</a>
Growing Winchelsea Inc	<a href="https://facebook.com/growingwinch">facebook.com/growingwinch</a>
Winchelsea Star	<a href="https://facebook.com/TheWinchelseaStar">facebook.com/TheWinchelseaStar</a>
Winchelsea Movie Club	<a href="https://facebook.com/winchelseamovies">facebook.com/winchelseamovies</a>
Winchelsea Community Market	<a href="https://facebook.com/100083362387611">facebook.com/100083362387611</a>
Winchelsea Land and River Care Group	<a href="https://facebook.com/envirowinchelsea/">facebook.com/envirowinchelsea/</a>
Upper Barwon Landcare Network	<a href="https://facebook.com/UpperBarwonLandcare">facebook.com/UpperBarwonLandcare</a>
Winchelsea & District Historical Society Inc	<a href="https://facebook.com/Winchelseaanddistricthistoricalsociety/">facebook.com/Winchelseaanddistricthistoricalsociety/</a>
Winchelsea Wildlife Shelter	<a href="https://www.winchelseawildlifeshester.com/">www.winchelseawildlifeshester.com/</a>
SCARS - Surf Coast Animal Rescue Service	<a href="https://facebook.com/groups/415211698950674">facebook.com/groups/415211698950674</a>
Winchelsea Gardeners	<a href="https://facebook.com/groups/779878518703025">facebook.com/groups/779878518703025</a>
Winchelsea & District Historical Society	<a href="https://facebook.com/Winchelseaanddistricthistoricalsociety/">facebook.com/Winchelseaanddistricthistoricalsociety/</a>
Winchelsea Repertory Society Inc	<a href="https://facebook.com/winchrep/">facebook.com/winchrep/</a>
Winchelsea Globe Theatre	<a href="https://facebook.com/Winchelsea-Globe-Theatre-164790897641678">facebook.com/Winchelsea-Globe Theatre-164790897641678</a>
Winchelsea Uniting Church	<a href="https://facebook.com/winchelseaunitingchurch">facebook.com/winchelseaunitingchurch</a>
St Thomas' Anglican Church	<a href="https://facebook.com/StThomasWinchelsea">facebook.com/StThomasWinchelsea</a>
St John the Baptist Catholic Church	<a href="https://facebook.com/pages/Winchelsea-Catholic-Church/101775670163180">facebook.com/pages/Winchelsea-Catholic-Church/101775670163180</a>
Winchelsea Mainly Music	<a href="https://facebook.com/groups/668500343953191/">facebook.com/groups/668500343953191/</a>
Winchelsea Health Club	<a href="https://facebook.com/WinchelseaHealthClub">facebook.com/WinchelseaHealthClub</a>
Winchelsea Playgroup (School terms only)	<a href="https://facebook.com/groups/551663435367031">facebook.com/groups/551663435367031</a>
Winchelsea Girl Guides	<a href="https://www.guidesvic.org.au/">www.guidesvic.org.au/</a>
Winchelsea/Modewarre Scouts	<a href="https://facebook.com/1stModewarreScouts">facebook.com/1stModewarreScouts</a>
Winchelsea Fire Brigade	<a href="https://facebook.com/winchelseafirebrigade/">facebook.com/winchelseafirebrigade/</a>
Winchelsea SES	<a href="https://facebook.com/groups/WinchSES">facebook.com/groups/WinchSES</a>
Country Women's Association - CWA Winchelsea	<a href="https://facebook.com/pg/CWAWinchelsea/">facebook.com/pg/CWAWinchelsea/</a>
Winchelsea Bowls Club	<a href="https://facebook.com/Winchelsea-Bowls-Club-533783333344345/">facebook.com/Winchelsea-Bowls-Club-533783333344345/</a>
Winchelsea Blues Cricket Club	<a href="https://facebook.com/groups/8999049476/">facebook.com/groups/8999049476/</a>
Winchelsea Blues FC	<a href="https://facebook.com/WinchelseaFNC/">facebook.com/WinchelseaFNC/</a>
WYLD Winchelsea Youth Leisure and Drop in	<a href="https://facebook.com/groups/569737570027065/">facebook.com/groups/569737570027065/</a>
Lions Club of Winchelsea	<a href="https://facebook.com/LionsWinchelsea">facebook.com/LionsWinchelsea</a>
Winchelsea Probus	<a href="https://facebook.com/893535194971083">facebook.com/893535194971083</a>
Winchelsea Golf Club	<a href="https://facebook.com/winchelseagc/">facebook.com/winchelseagc/</a> <a href="https://facebook.com/groups/1324943804676697">facebook.com/groups/1324943804676697</a>
Winchelsea's Zumba Dance Crew .	<a href="https://facebook.com/share/g/1B19EATPVz/">facebook.com/share/g/1B19EATPVz/</a>

## Small business bus to visit Lorne

Surf Coast business owners are encouraged to book a free session with the Victorian Government's Small Business Bus when it visits Lorne on Thursday 27 February.

The Small Business Bus, operated by Business Victoria, offers professional assistance to anyone planning, starting or looking to grow a business.

It is staffed by expert advisers from the Monarch Institute who are available to help develop business ideas, discuss key issues and priorities, identify a clear direction and set a business action plan.

Bookings are essential and are open now. Individual sessions run for 45 minutes, with all discussions to be kept completely confidential.

Councillor Leon Walker said the bus's visit offered an excellent opportunity for the local business community. "Starting and running a business is challenging, and any chance to gain some free expert advice that might help your business succeed is valuable," Cr Walker said.

"Small businesses are such an important part of our local economy and community. We want to see all Surf Coast businesses thriving. Thank-you to Business Victoria for making this resource available."

### SMALL BUSINESS BUS VISITS LORNE

**WHEN:** Thursday 27 February, 10am-4pm

**WHERE:** Lorne Visitor Information Centre car park, 15 Mountjoy Parade, Lorne

**BOOKINGS:** Limited places available.

Book now via [business.vic.gov.au/grants-and-programs/small-business-bus](https://business.vic.gov.au/grants-and-programs/small-business-bus)

Information about Council support available to Surf Coast businesses and those looking to start a business is available at [surfcoast.vic.gov.au/Community/Businesses](https://surfcoast.vic.gov.au/Community/Businesses).

## Be part of stopping violence before it starts in Ballarat

People living in Ballarat are invited to co-design the world-leading 'saturation model', bringing together new and expanded programs, policies and services with a singular focus: to drive down the rates of family violence and men's violence against women.

Minister for Prevention of Family Violence Natalie Hutchins and Respect Victoria today called for people who live and work in Ballarat to register their interest in helping co-design the model that will deliver a new coordinated approach to prevention.

Respect Victoria has been consulting extensively with the community and family violence services in Ballarat to help shape and inform key elements of the model. Now, individuals and organisations are invited to apply for the co-design group, to shape the way the saturation model is rolled out across Ballarat.

The four-year saturation model will bring together every part of the community – from local sporting clubs, workplaces, community, organisations health services, council, schools, emergency services and more – to deliver a new coordinated approach to prevention.

In addition to local programs and services, the four-year saturation model will deliver stronger referral pathways between prevention programs and specialist response services, so people experiencing violence – or seeing early warning signs – can get the help they need as quickly as possible.

No community is immune to violence. It's happening in homes across our state and nation. But because of the heartbreaking loss of three women in Ballarat last year, we know the people of Ballarat are more determined than anyone to put an end to violence.

The working group will meet for face-to-face and online workshops between February and May. Respect Victoria will host community roundtables focused on delivering prevention initiatives locally, open an online platform for community feedback, and recruit 'community connectors' to support further engagement.

This builds on the State Government's package of reforms that will drive action: responding to victims when violence occurs, delivering a stronger justice response that holds offenders to account, and continuing Victoria's world-leading prevention response – stopping violence before it starts.

The model is part of the State Government's Strengthening Women's Safety Package, which includes work to prevent violence and provide tailored responses for women and children who experience family violence, while keeping the focus on holding men who use violence accountable.

Expressions of interest are open until Friday, 7 February 2025. To apply for the co-design group, visit [respectvictoria.vic.gov.au/get-involved-in-designing-the-Ballarat-community-saturation-model](https://respectvictoria.vic.gov.au/get-involved-in-designing-the-Ballarat-community-saturation-model).

## Latest initiatives to power Victoria's music industry

The Victorian Government is backing Victoria's music industry with more gigs and more support for artists to build their music careers locally.

Victorian musicians, bands, music workers and venues will receive a boost with the latest round of the Music Works grants program now open for applications, and the 10,000 Gigs: Victorian Gig Fund opening on 30 January.

The Music Works program provides grants to artists and music workers to support career building projects ranging from writing and recording new music to professional development, touring, marketing and more.

The 10,000 Gigs: Victorian Gig Fund provides grants to venues to stage paid gigs by Victorian artists. Applications will open next week to licensed live music venues or venues that can host live performances in outer-metropolitan or regional Victoria. Venues can apply for up to \$11,000 to stage up to 20 gigs.

The Victorian Government has also appointed a 14-member Victorian Music Industry Advisory Council, who will provide expert advice on the challenges and opportunities facing the industry and future proofing Victoria's globally recognised music industry.

To find out more about the latest initiatives to back Victoria's music industry, including the full list of Victorian Music Industry Advisory Council members, visit [creative.vic.gov.au/news](https://creative.vic.gov.au/news).

## Winchelsea Men's Shed



**For The Community**  
**Men's Shed Kindling/Offcuts**  
 Bags of Kindling/timber offcuts  
 are available for pick up from  
 the Men's Shed on Wednesday's  
 from 9.30 to 2.30.

If you need a delivery made you  
 can call Bill on 0438 083 373.  
 The price for a bag of kindling is  
 now \$7.00 (up from \$5.00).

### Nesting Boxes

Bird or animal nesting boxes are  
 available from The Men's Shed.

These can be made to order.

Call in on any Wednesday  
 to have a chat.



5234 6585 0417 385 984

For all your domestic & stock water.  
 Also available for road and civil construction  
 Local owned and operated.

52672192
R & K Creative Framing
for all your framing needs

free quotes  
pension discount  
specialist in Age &  
Disability Modifications

Ray & Kim Jansen  
10 Witcombe st  
Winchelsea 3241  
0414672192

Ray The Home  
Maintenance HANDYMAN  
abn 47928623462



## Winchelsea Supermarket

Trading Hours

**Monday to Saturday**

8.30am to 7.30pm

**Sunday**

10am to 7pm

**Ph: 5267 2676**

29 Main St, Winchelsea

## Antique Repairs

By **Doug Burns** est. 1976

- All Furniture
- French polishing
- Carving
- Veneering
- Wood Turning
- Porcelain



*Unusual Requests Welcome*

180 Barwon Terrace, Winchelsea

**0428 672 704**

All About
Mowers & Chainsaws

Repairs to all makes and models of ride on mowers, domestic  
mowers, pumps, chainsaws, brushcutters and small engines.

Trading Hours: Mon - Fri 8am - 5pm Saturday 8am - 12 noon

5267 2266

Cnr Princes Hwy & Lennox St Winchelsea

www.allaboutmowers.com.au

accounts@allaboutmowers.com.au

FERRIS COX STIHL BRIGGS & STRATTON VICTA

**SOUTHERN GRAIN STORAGE PTY. LTD.**

AG SUPPLIES FERTILISER GRAIN STORAGE SEED CLEANING

**(03) 5267 2351**

**WINCHELSEA CONCRETING**

• Driveways • Sheds • Decorative Concrete • Raft Slabs

**Robert Murphy**  
0438 235 237  
winchelseaconcreting@outlook.com

**MRP Steelworx**

Matthew Partridge  
p 0418 672 334  
e mrpsteelworx@yahoo.com.au

**Welding Service**

- Onsite welding  
- Farm maintenance  
- Farm machinery &  
equipment repairs  
- Cattle & sheep yards  
- Custom built trailers  
- Supply & install gates

# LIONS CLUB CLOCK

Willis Street (Princes Highway), Adjacent Public Library building, Winchelsea, 3241



## LIONS CLUB CLOCK

In 1985 the Council voted to erect a clock tower in conjunction with the local Lions Club at the Geelong approach to the township of Winchelsea.

Many locals objected to the clock tower as a waste of ratepayers' money, its' location was aesthetically bad and it would be a shame if any trees were removed to allow it to be built. At a Shire meeting it was voted nine votes to seven, to support the clock.

The clock was built to coincide with Victoria's 150th anniversary celebrations.

The Lions Club raised \$7000 and the balance of \$3000 was donated by the Shire.

Council adopted the recommendation that the clock be located on the public library site which was owned by the Shire and that the Winchelsea Lions Club will be responsible for its maintenance. It was resolved that the council would be responsible for the power bill and paying the insurance costs.

At a later date two lions were placed on the top of the clock.



## WINCHELSEA HISTORICAL SOCIETY

Hesse Street Cnr Princes Highway, Winchelsea 3241

### OPENING HOURS

Wednesdays 1 - 4pm, Fridays 10 - 3pm



# SERVICES & ACTIVITIES IN WINCHELSEA

## VLINE TRAIN SERVICES

### TO MELBOURNE:

Mon - Fri 6:41 am, 7:57am, 11:14am, 2:08pm, 7:23pm  
Sat - Sun 9:26am, 1:30pm, 7:18pm

### TO WARRNAMBOOL:

Mon - Fri 8:56am, 11:55am, 2:50pm, 5:27pm,  
6:45pm, 8:50pm  
Sat - Sun 8:47am, 2:46pm, 8:34pm



## WINCHELSEA GIRL GUIDES

Our Unit meets at the Catholic Church Hall,  
Harding St Winchelsea each Monday 4.30pm-6pm  
All girls 5yrs- 15yrs Welcome!  
Contact Yvonne Orchard 0448 672 630  
or Emily LaPorte Phone 0476 719 381



## 1st Modda & 1st Winchelsea SCOUT GROUP

**Joeys:** Tuesdays of school term 5-6pm  
**Cubs:** Mondays of school term 6:30-8pm  
**Scouts:** Tuesdays of school term 6:30-8:30pm  
All at Modewarre Hall, Cape Otway Rd  
**Venturers:** Wed at Walton's Rd Venturer Den  
Contact Marie McPadden 0409 330147



## COUNTRY WOMEN'S ASSOCIATION

7pm second Wednesday of month  
Winchelsea Senior Citizens' Hall

**Join us.** *A role for everyone*



Nationally accredited training to help our community.  
Pop in to meet your crew **Wednesdays 7:30pm**

**Winchelsea Unit** 325 Mousley Drive **132 500**

## BUS TO THE HUB



For reservations on the weekly bus  
to the Eastern Reserve Hub,  
please phone 52671202.

## Winchelsea and District COMBINED PROBUS CLUB



Senior Citizens Rooms,  
Harding St, Winchelsea.  
New members always welcome.  
Enquiries Lorraine 0417 467 927

## SURF COAST MOBILE LIBRARY

**Hesse St, Fridays, 2pm-5pm**  
Surf Coast Mobile Library  
parked in Hesse Street (outside Shire Hall)  
Fridays 2:00 and 5:00pm unless it is a Public Holiday.



**SOCIAL BRIDGE**  
Every Tuesday 10.30 am - 1.00 pm  
Senior Citizens Centre  
36 Harding Street Winchelsea  
New players always welcome  
Contact Elaine Atkinson 0458009616

## WINCHELSEA TAXI

0429 672 888 or 5267 2888  
Wheelchair accessible  
10 seater bus available.

## WINCHELSEA TRANSFER STATION

55 Cressy Road, Winchelsea

Tuesday	2pm-4pm	Saturday	1.30-3.30pm
Thursday	2pm-4pm	Sunday	9.30-12.30pm

Closed on Christmas Day,  
but open on other public holidays  
that fall during their normal operating hours.  
[www.surfcoast.vic.gov.au/disposalsites](http://www.surfcoast.vic.gov.au/disposalsites)



## WINCHELSEA PLAYGROUP

Every second Thursday 10am-12pm  
St Thomas Anglican Church Hall  
cnr Barwon Tce and Hopkins St, Winchelsea  
Contact: Danni Menzies 0432019944  
[winchelseaplaygroup@gmail.com](mailto:winchelseaplaygroup@gmail.com)  
Facebook - Winchelsea Playgroup 2019  
**New families welcome**





# Winchelsea Bowls Club

Julie Johnson

In what has been some warm weather we have seen a remarkable nailbiter finish to set up the Finals in the 2024/25 Pennant season. We have 4 out of 5 Pennant teams in the Finals again this season and if Division 4 had not had the hard knocks of having to forfeit two games due to lack of players it may well have been 5 out of 5. This is once again a fantastic result for a small club who have a great spirit and just keep on pushing the boundaries, let's just hope we can do this again during the Finals.

After about 13 years of this I can tell you that bowls is just so much more than putting a bowl on the green and getting it close. Over and above all it is how the teams work supportively together, if they stay together and if they don't how an individual and team can adapt to changes and challenges of which there are many throughout the season.

## MIDWEEK PENNANT RESULTS

### Rd 13

Division 1 were def at home by Simpson 57/80 shots.

Division 3 def Camperdown Golf away 2/3 rinks, 57/53 shots.

### Rd 14

Division 1 def Colac away 2/3 rinks, 74/63 shots.

Division 3 def Colac away 1 rink, 1 draw 49/48 shots.

Divisions 1 and 3 both play Colac City and Colac at Cressy green on 11th February with Division 1 having the double chance finishing 2nd.

## SATURDAY PENNANT RESULTS

### Rd 13

Division 1 def Colac Central at home 3/4 rinks, 109/84 shots.

Division 2 def Apollo Bay away 3/4 rinks, 105/90 shots.

Division 4 def Cressy away 2/3 rinks, 84/46 shots.

### Rd 14

Division 1 were def by Colac City away 2/4 rinks, 83/101 shots.

Division 2 def Camperdown Golf at home 2/4 rinks, 101/83 shots.

Division 4 def Cobden at home all rinks, 59/52 shots.

## LADDER POSITIONS

Both Division 1's and the Division 2 team 2nd position, Division 3 3rd position.

Congratulations to all teams this season giving their utmost every game. All the very best to our two pairs in the District Finals at Warrnambool tomorrow and may the bowls be with every member as they strive to do their utmost during what will be a challenging Finals Series 2025!!

**WINCHELSEA BOWLING CLUB BAREFOOT BOWLS**

**FRIDAY NIGHTS FROM 5.30PM**

14TH FEBRUARY  
21ST FEBRUARY  
28TH FEBRUARY  
45 Hesse St  
Winchelsea

For Further Info  
Please Call Rhys  
0436 683 487

Part of the team  
Community Bank  
Winchelsea & District

**Bendigo Bank**

**SAUSAGE SIZZLE  
LIVE MUSIC  
RAFFLES  
JOKER  
KIDS RINK SET UP**

Brooke Robbins

Winchelsea Bowls Club welcomes all visitors. Our Club has a beautiful garden setting in the heart of the town. For the complete newcomer to lawn bowls, looking for a sporting activity that promises much fun and enjoyment with a competitive element, then the friendly, welcoming atmosphere of our Bowling Club is the place to be.



## Visit our new office located at Winchelsea Ag, Horse & Pet

For all your livestock, rural real estate and  
property management needs, speak to the  
Charles Stewart team today

**Livestock** Peter McConachy 0408 522 878

**Real Estate** Michael Stewart 0418 520 467

**Property Management** Sarah Higgs 5231 5011



5231 5400  
15 Murrell Street, Winchelsea



## Life's busy. Let us help you.

If you're like most people, it's hard finding time for the  
essentials, let alone things like your banking.

But your finances and banking needs are too important to put off.  
Now, you don't need to. As Mobile Lenders, we can come to you  
- when and where it suits you and your schedule. And as a valued  
employee of Community Bank Winchelsea we want to make it as  
easy as possible.

We can help you with:

- Buying your first or next family home
- Saving for your first home
- Residential Investment Lending
- Refinancing from your current lender
- Home loan reviews
- Pre-approvals

With extensive banking experience and financial expertise,  
we'll help bring your financial goals to life.

Contact us today.



**Ebony Berg**  
0400 784 249



**Josie Kavenagh**  
0409 564 192



**Caitlyn Oakley**  
0429 007 234



Community Bank  
Winchelsea and District

## Funeral Planning

*Working out what is best for you*

Prepaid Funerals, Funeral Bonds,  
Pay-by instalments...There are  
many options and it's important  
to make the right choice

Alyson Burchell will be available  
by appointment to answer any  
questions about funerals and  
planning ahead



For more information or to make an  
appointment contact Sue on 5221 4788

Tuckers Community Office,  
Surf Coast Taxation Services, 22 Willis Street,  
Winchelsea

**First Tuesday of the Month,**  
By appointment 10.00am - 12.00pm

## Tuckers

Funeral & Bereavement Service  
...for a life worth celebrating

Caring for families since 1883  
5221 4788 [www.tuckers.com.au](http://www.tuckers.com.au)



## SIMPLE STORAGE SOLUTIONS

- Personal & Business Storage
- Boat, Caravan & Vehicle Storage
- High Security Premises
- Individually Alarmed Units
- Electric Gate Access
- 7 Day Access & CCTV

YOUR STORAGE PROBLEMS SOLVED

**5267 3116**  
6 ALSOP DRIVE, WINCHELSEA 3241





Family Healthcare - Naturally through Chiropractic

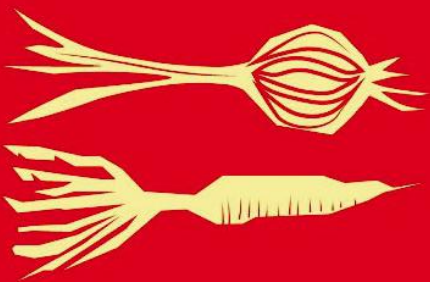
Get out of pain and back to life.  
Build a foundation for lifelong wellness.  
Perform at your absolute best.




[www.onebodychiropractic.com.au](http://www.onebodychiropractic.com.au)

03 52672240 Shop 4/21 Hesse St Winchelsea

Here for your Vitality...



Winchelsea  
Community Market



**R.A.K. DAVIS**  
**& SONS**

**CARTAGE  
CONTRACTORS**

**WINCHELSEA**

SUPPLIER OF ALL QUARRY MATERIALS, TRUCK HIRE

CARTAGE OF GRAIN, LIME, GYPSUM & SUPER

LANDSCAPE & GARDEN SUPPLIES

56 WILLIS ST, WINCHELSEA

Ph – 5267 2094

Ryan – 0438 672 281

email: [rakdavissons@gmail.com](mailto:rakdavissons@gmail.com)

Winchelsea  
**Medical  
Clinic**

Located at 36 Main Street, Winchelsea 3241

For any enquires or bookings please contact the clinic on 5292 8028.

Or visit our website: [www.winchmc.com.au](http://www.winchmc.com.au)

Opening Hours:

Monday - Friday 8:00am - 5:00pm

(Monday Evening Clinics available and selected Saturdays)



Our clinic accepts online bookings via the app called HotDoc.

Download the app on the App Store or Google Play or head to our website.



- Domestic and Commercial hire equipment • Industrial welding gas
- Digging and Earthmoving equipment • New trailers and trailer repairs
- Firewood • Stockists of Royal Oil Lubricants products
- LPG for domestic and commercial requirements

Give Chris and the Team a call on **5232 1177** or email [info@colachire.com.au](mailto:info@colachire.com.au)

[www.colachire.com.au](http://www.colachire.com.au)

101 Wallace St Colac 3250



A family business operating for more than 138 years, HF Richardson services an extensive client base throughout the greater Winchelsea area. Our success is built on a long history of innovation and while we've moved with the times, our basic values of honesty, trust and integrity have remained.



**Eric Foster**  
**0429 499 924**  
Sales Executive



**Ken McDonald**  
**0418 524 150**  
Licensed Estate Agent

**Residential | Rural Lifestyle  
Agricultural Farms**

**HF RICHARDSON**

**PROPERTY**

[www.hfrichardson.com.au](http://www.hfrichardson.com.au)



**Moriac Veterinary Clinic**

**0447 781 089**

**PHONE 24 HOURS**

**784 Hendy Main Road Moriac**

[info@moriacvet.com](mailto:info@moriacvet.com)

[www.moriacvetclinic.com.au](http://www.moriacvetclinic.com.au)

**HOURS // Monday - Friday: 8am - 5pm**

**WANT TO JOIN  
PROBUS?**

**Enjoy fellowship with  
other members**

**Enjoy trips & outings**

**Listen to guest speakers**



**Contact Lorraine**  
**0417 467 927**

**Wightons Lawyers**

Dispute Resolution & Litigation

Debt Collection

Property Law

Wills & Estates

Powers of Attorney

Business Law

Family Law

*By appointment only*

22 Willis Street, Winchelsea

ph. 5221 8777

[www.wightons.com.au](http://www.wightons.com.au)

[eldersrealestate.com.au](http://eldersrealestate.com.au)

**Elders**

## **You're in Safe Hands With Peter Lindeman** ***Delivering Exceptional Results for Over 20 Years***

If you're thinking of selling a Rural or Lifestyle acreage property on the Bellarine, the Greater Geelong region or beyond then think Peter Lindeman.

Peter spent 20 years managing farms before jumping the fence to sell them; and over the last 23 years he's helped over 350 vendors achieve extraordinary results, more often than not surpassing their expectations. Why not let Peter show you how he can help you achieve an outstanding result for your property.

**Peter Lindeman - 0418 525 609**

**RURAL AND LIFESTYLE SALES MANAGER - ELDERS GEELONG**

**E: [peter.lindeman@elders.com.au](mailto:peter.lindeman@elders.com.au)**





# Winchelsea Golf Club

Rachel Boddington

## RESULTS

**Saturday 8/25**

**Stableford (15 Players)**

- 1st - Greg Batson (31) 37 points  
2nd - Lachie King (16) 36 points

NTP (6th/15th) Stephen Cole

**Mens - Mid Week - Weekly**

**Stableford 5/2/25 (19 Players)**

- 1st - Steven Harvey (16) 38 points  
2nd - Rob Wilson (20) 35 points C/B  
3rd - Greg Rigby (21) 35 points C/B

NTP (2nd/11th) - Bill Spencer

**Ladies - Wednesday**

**Jess Budge Stableford Trophy**

Winner: Lesley Mathison 32 pts C/B

R/Up: Tara Steward 32 pts C/B

NTP: Elizabeth Alston



*Come along and have a great round of golf with a fantastic group of people,  
we pride ourselves on being welcoming and enjoying all aspects of golf, both the game and social.*

## M&B WOOD PLUMBING

**Call Matt - 0418 319 357**  
***mbwoodplumbing.au***

**Servicing Winchelsea  
& surrounds**

- General maintenance & blocked drains
- Gas fitting & hot water service upgrades
- New homes & renovations



**Casuarina Counselling Therapy**  
*Time For You*

Counselling to help find clarity, understanding and new ways forward for relief from distress of all kinds, including anxiety, depression, addiction, relationship issues.

**Call 0493 988 150 to book appointment**  
Available at The Exchange,  
32-34 Main Rd, Winchelsea

## Winchelsea Taxis is now Surfcoast Taxis

Our fleet of vehicles are growing to all late models and we are covering an extended area including Winchelsea, Colac, Bannockburn, Inverleigh, Great Ocean Road and Geelong.

We have a fleet of 10 seater Maxi Vans, all with capacity to carry wheelchairs.

**Surfcoast Taxis Pty Ltd**  
**All Bookings: 0408 325 992**  
**Fax: 5267 2699**  
**Email: bannotaxis@gmail.com**  
(Admin or Stan 0429 672 888)  
66A Batson Street  
Winchelsea 3241



Accounts NDIS provider. TAC, DVA etc

NDIS provider number 4050001044

NDIS provider number 4050001048



## HESSE RURAL HEALTH



Acute Care\*  
Urgent Care\*  
Residential Aged Care\*  
Community Nursing  
Dietetics  
Physiotherapy  
Occupational Therapy

Diabetes Education  
Social Support Groups  
Counselling  
Home Care  
Health Promotion  
\* services from Winchelsea only

**www.hesseruralhealth.com.au**  
**P: (03) 5267 1200 E: reception@hesse.vic.gov.au**



# MGT BUILDING & CONSTRUCTION

NEW HOMES | EXTENSIONS | RENOVATIONS

Ph: 0409 433 687



Water Supply Specialists

WATER SOLUTIONS

74 Dennis Street, Colac  
5231 1861



ALL THINGS WATER:

- PUMPS • PIPES
- FITTINGS • TANKS
- POOL CHEMICALS
- IRRIGATION
- WATER PURIFICATION
- SOLAR • REPAIR

Green Lead Electrical

Connecting you to a greener future  
REC 23618

0467 097 101



**Servicing Geelong & the Surf Coast**

**Specialising in all residential electrical work including:**

- Switch board & lighting upgrades
- Outdoor lighting
- Electrical safety checks
- Energy efficient LED lighting
- Ceiling sweep fans & ventilation
- Energy saving advice

Phone Martin Wilkinson:

**0467 097 101**

[greenlead@outlook.com](mailto:greenlead@outlook.com)

1132288-CG18-14

**SIMCO**  
PLUMBING SERVICE

Domestic - Commercial - Rural

**0400 643 976**

- All general Plumbing and Gasfitting • Water tanks and Pumps
- Renovations and Extensions • Hot water and Heat pump
- Split system and Wood heaters • Roof and Gutter
- Septic and Treatment plants • Excavation, Bobcat and Tipper
- Driveways and Earthworks
- Blocked drains and CCTV Inspection

Simon McGillivray

Lic: 109610 Free Quotes, Fast & Friendly Service

**TREE WORKS & STUMP GRINDING**



Fully insured and qualified climbing arborists.

Slashing and fire preparation.

FREE QUOTES

**0488 553 650**

Mathieu Vaupres

[www.colactrees.com.au](http://www.colactrees.com.au)



**WINCHELSEA LIONS CLUB**

ARE SELLING ENVIRONMENTALLY FRIENDLY SHREDDED PAPER COMPRESSED BRICKS FOR YOUR FIRE  
SAVE ON THE RISING COST OF WOOD BY INCLUDING PAPER BRICKS AS WELL

PACKET OF 4 ROARS (BRICKS) **\$5**  
ROLL OF PURRS (SMALL ROLLS) **\$2**

AVAILABLE AT LIONS PAPER SHED  
36 HARDING STREET  
SATURDAY MORNINGS  
10AM - 12 NOON  
FROM 4<sup>TH</sup> MAY UNTIL SOLD OUT

EFTPOS AVAILABLE  
CASH ACCEPTED

**Scott McDonald**  
**0423 413 829**



**S.J.R AUTOMOTIVE**

ABN 942 483 646 39  
13 ALSOP DRIVE, WINCHELSEA VIC 3241





8 February 2025

Trebeck Reserve, Winchelsea



## Helen Woodalls

On a perfect morning for walk/run in the park 43 participants completed the course through Trebeck Reserve this week. 10 people completed their Personal Best time for Trebeck Reserve. Congratulations to Bernadette Gibson, Liz Bennett, David Kirk, Sue Rawson, Rachel Kirk, Mark Hubbert, Dee Knchenmiester, Rob Davies, Kate Bond and Jeff Butler. Also congratulations to Liz Bennett completing her 25th parkrun and Graeme Holland for doing his first parkrun, with visitors from Oxford Uk, Geelong and Melbourne. Further details of this week's results can be found at [trebeckreserveparkrun.com.au/](http://trebeckreserveparkrun.com.au/) results or check out our Facebook page for today's photos and further information.

This event was made possible by the following volunteers: Helen Woodall, Kate McInnes, David Woodall, Don Smith, Ann Morsby, Ross Caldwell, and Murray Bennett. It takes a minimum of six people each week to safely conduct an enjoyable event. Please

email [trebeckreserve@parkrun.com](mailto:trebeckreserve@parkrun.com) if you are able to volunteer some of your time. Tasks are simple, sociable, fun and very much appreciated.

If you wish to join us any Saturday morning as a walker, runner or volunteer please complete the simple online registration at [parkrun.com.au/register](http://parkrun.com.au/register), this is free, only needs to be done once and can be used at any of the 5,000 plus parkrun events worldwide.

You do not need to be a runner, wear fancy Lycra or the latest high-tech shoes. Around one third of participants walk the course.

parkrun was conducted at around 500 locations across Australia this week. Well behaved dogs on a short hand held leash are welcome (no waist harnesses please).





*New Homes, Renovations, Extensions,  
Bathrooms, Decks & Pergolas*

☎ 0408 583 362

✉ [stephen@alfordbuilt.com.au](mailto:stephen@alfordbuilt.com.au)



**REGISTERED**  
Building Practitioner

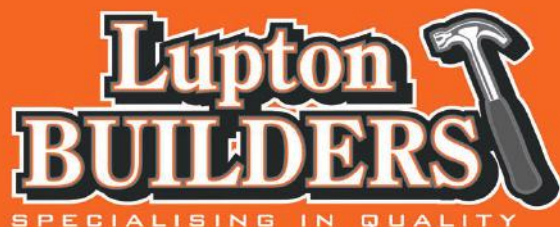
# Winchelsea Star

ISSN 2202-6851



9 772202 685002

Since 1977



**REGISTERED**  
Building Practitioner

- NEW HOMES
- EXTENSIONS
- RENOVATIONS
- ALTERATIONS
- DECKS
- PERGOLAS
- GARPORTS
- VERANDAHS
- RE-GLADS
- BATHROOMS
- WINDOW REPLACEMENTS

LEIGH LUPTON  
0438 840 104

CHRIS LUPTON  
0407 681 514

[LEIGHLUPTON17@GMAIL.COM](mailto:LEIGHLUPTON17@GMAIL.COM)

EST. 1977

## HESSE RURAL HEALTH



## Volunteers Required

Volunteers are one of Hesse's greatest assets, playing a vital role to enhance the quality of Hesse services & client experiences.

- Bus Driver
- Outings Assistant
- Resident Visitor
- Events & Activities Assistant
- Group Wheelchair Walkers
- Appointment Escort
- Social Support Activities
- Gardening - Winchelsea
- Hospital Auxiliary Member
- Consumer Advisory Committee
- Marketing & Fundraising Committee

For more information please contact Hesse on  
(03) 5267 1200 or via email [reception@hesse.vic.gov.au](mailto:reception@hesse.vic.gov.au)

## DEFIBRILLATORS IN WINCHELSEA

### Accessible to the public 24 hours a day

The Winchelsea Lions Club has compiled a list of public access defibrillators in Winchelsea. If anyone knows any others with 24 hour public access, please let Linda Carter know 0439 817 263.

#### Ambulance Victoria

33 Willis Street

#### Bendigo Bank

11 Main Street

#### Globe Theatre (Side entrance)

17 Willis Street

#### Hesse Rural Health

8 Gosney Street

#### Men's Shed

51 Hesse Street

#### Netball Courts

Eastern Reserve Hopkins St

#### Senior Citizens Club

36 Harding Street

#### Uniting Church

33 Hesse Street

#### Winchelsea Bowls Club

Hesse St,

#### Winchelsea Cemetery,

McConachy St

#### Winchelsea Golf Club

13 Anderson Street

#### Winchelsea Primary School

Main Street

#### Wurdale Memorial Hall

220 Wurdale Road

