

M-HD Series | LK16MHD | LK20M-HD

LIFTKING
Manufacturing Corp.



CONSTRUCTION FORKLIFTS

Let Us Do The Heavy Lifting

If your success depends on the efficient and effective lifting of heavy loads on any job site then you can count on the complete line of Liftking forklifts to perform above and beyond the call of any construction project. Liftking has more than 50 years of expertise in designing, developing and manufacturing material handling equipment to withstand the toughest conditions.



The features you need

- Fully Automatic HD 4-Speed Powershift Transmission
- Ergonomically designed controls
- Comfortable and functional cab
- 2-wheel and 4-wheel drive options
- 2-wheel steer with tight turning radius
- LED for all exterior lighting
- Powerful Perkins Tier 4 Turbo diesel engine
- Dual Lockable Toolboxes

CLOSED CAB: The all-weather closed cab option is equipped with sound insulation, defroster fan, heavy duty heater, window wipers, removable 2-piece split doors with sliding windows, and 360 degree visibility for safe, efficient, and comfortable operation.





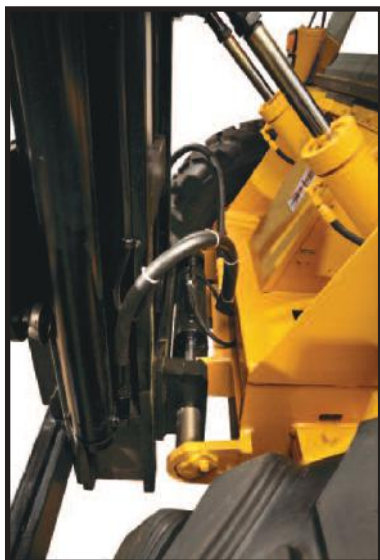
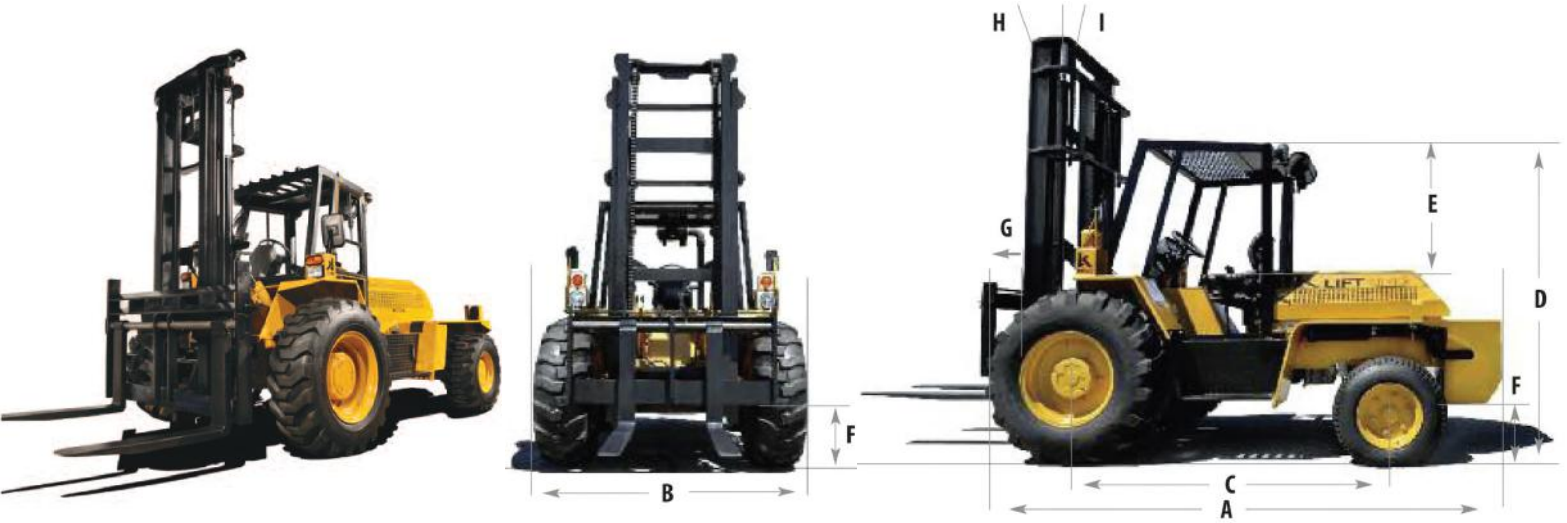
ELECTRICAL PANEL: Electrical, steering, and brake maintenance is facilitated through a hinged compartment located at the front of the unit.



ENGINE: The unique sliding hood provides unobstructed engine access for quick maintenance checks. A Perkins Tier 4 Turbo Diesel is standard.



STEERING CONTROL: Designed for durability and performance with an oversized axle featuring high steer angle and heavy duty spindles.



	Ref	LK16M-HD	LK20M_HD
Lift capacities @ 24 inch load centre		16,000 lbs / 7,264 kg	20,000 lbs / 9,080 kg
Overall length (without forks)	A	179 in / 4,550 mm	190 in / 4,826 mm
Overall width	B	98 in / 2,489 mm	98 in / 2,489 mm
Wheelbase	B	101 in / 2,565 mm	114 in / 2,896 mm
Height to top of overhead guard	D	100 in / 2,540 mm	100 in / 2,540 mm
Distance from seat to overhead guard	E	39 in / 990 mm	39 in / 990 mm
Ground Clearance (at rear axle)	F	12 in / 305 mm	12 in / 305 mm
Forward Projection	G	38 in / 965 mm	38 in / 965 mm
Mast Tilt - Forward	H	38 in / 965 mm	38 in / 965 mm
Mast Tilt - Rearward	I	38 in / 965 mm	38 in / 965 mm
Center of Tire to Fork Face	J	38.5 in / 972 mm	38.5 in / 972 mm
Track, Front - 2WD/4WD		79 in / 2,007 mm	79 in / 2,007 mm
Track, Rear - 2WD		71 in / 1,803 mm	71 in / 1,803 mm
Track, Rear - 4WD		76 in / 1,930 mm	76 in / 1,930 mm
Weight		22,460 lbs / 10,190 kg	24,620 lbs / 11,170 kg
Travel speed		19 mph / 30 kph	19 mph / 30 kph
Grade ability		25%	25%

Specifications M-HD Series: LK16M-HD | LK20M-HD

ELECTRIC

System Type	12 volt negative ground with circuit breaker protection
Battery	1000 AH, Maintenance Free
Alternator	85 A
Neutral Safety Start	Yes, with anti re-start protection.
Lighting	Headlights, tail brake lights, reverse lights, and turn signals

TIRES

Front	15.5 x 25 12 PLY R4
Rear	14.0 x 17.5 14 PLY R4

CAPACITIES

Fuel Tank	31.5 gal / 120 ltr
Hydraulic System	31.5 gal / 120 ltr

ENGINE

Model and Type	Perkins 904J-E28T (16M) and 904J-E36TA (20M), 4-Cylinder Turbo Diesel, Tier 4
Horsepower	74 hp (16M, E28T) / 134 hp (20M, E36TA)
Torque	221 ft lbs (16M, E28T) / 406 ft lbs (20M, E36TA)
Displacement	171 cu. in. (2.8 L) (16M, E28T) / 220 cu. in. (3.6 L) (20M, E36TA)

AXLES

Steer Axle 2WD / 4WD	Heavy duty industrial, single cylinder, fixed track 2WD fabricated, 4WD cast steel
Oscillation	10 degrees per side
Static Rating	40,000 lbs. / 18,144 kgs
Front Drive Axle	Heavy duty final drive outboard planetary
Differential	Limited Slip
Static Rating	50,000 lbs / 24,750 kg

STEERING

Type	Hydrostatic, with extreme duty single cylinder
Steering Turns Lock to Lock	4
Pressure Rating	1800 PSI / 124 Bar
Turning Radius Between Curbs	16.5 ft / 5.0 m (16M) 17.5 ft / 5.3 m (20M)

HYDRAULIC SYSTEM

Pump Type	Gear
Flow Rating	25 GPM @ 2200 RPM
Pressure Rating	2500 PSI / 173 Bar

Mast Specifications

O.A.H.R.	MAST TYPE	O.A.H.L.	FREE LIFT (Optional)
144 in. / 3658 mm	2 Section	116 in. / 2946 mm	72 in. / 1829 mm
168 in. / 4267 mm	2 Section	128 in. / 3251 mm	84 in. / 2134 mm
168 in. / 4267 mm	3 Section	100 in. / 2540 mm	56 in. / 1422 mm

STANDARD EQUIPMENT

Heavy Duty Clearview Roller Mast with Dual Chains • Hydraulic Mast side shift • FOPS Operator compartment • Oil Cooled Submerged Disc Brakes • Power Assisted Brakes • Manual dry-disc parking brake • Power Steering • HD Powershift Transmission • Limited Slip Differential • Tier 4 Turbo Diesel Engine • Headlights, tail lights, reverse lights, and turn signals • External side view mirrors • Wide-grip Handrails • Extra wide steps • Hydraulic Tank Level and Temperature Gauge • Two Lockable Toolboxes • LK20M: Electric Horn and automatic Backup alarm • Tilt steering column with anti-restartignition and neutral safety interlock • Adjustable vinylsuspension seat with arm rests and retractable safety belt • Front & Rear fenders • Engine oil pressure gauge, fuel gauge, tachometer, hour meter, and warning lights • Lockable sliding engine hood, fuel and hydraulic caps • High-mount air intake with pre-cleaner • Operator, maintenance and illustrated parts manuals included • 1 Year 2000 hours limited warranty (2 year engine warranty)

OPTIONAL EQUIPMENT

Various mast/carriage/fork types and sizes • Various engines • Buckets and other attachments • Powershift electronic transmission • High durability powder coat yellow paint with black trim • Additional lighting • Auxiliary • DS Rating- 2-Piece Split Door • Vinyl Roll-up Door • Tinted Windows • Sunvisor • 4 Wheel Brakes • Deadman seat • Safety-Start Seatbelt • Heated Mirrors • Cold Weather Package • 12V Outlet • Radio • Cupholders • Enclosed all weather operator compartment with HD heater, sliding windows, wipers, lift-off doors • ROPS Operator compartment • Air Conditioning • Air ride suspension seat with arm rests and retractable safety belt • Foam filled tires • Towing package • Pintle Hook/Trailer Hitch • Contact dealer for other options

Liftking reserves the right to make changes in specifications shown, herein, and improvements, or discontinue manufacture at any time without notice or obligation. The information contained herein is general in nature and is not intended for specific application purposes.



Liftking is ISO 9001:2008 registered (EN ISO 9001:2008; BS EN ISO 9001:2008; ANSI/ASQ Q9001:2008)

7135 Islington Avenue, Woodbridge, Ontario. L4L 1V9
Tel: 905-265-3965 | Fax: 905-851-6396

www.liftking.com

LK_pb27GG5_0621