

- Legend**
- Paved Trail
  - Unpaved Trail
  - Bike Lane  
one or both sides of street
  - Bike Boulevard  
lower traffic volumes w/ sharrow
  - Shared Lane  
higher traffic volumes w/ sharrow
  - Protected Bike Lane  
one or both sides of the street
  - Other Roads suggested by cycling  
community, traffic volumes vary
  - Steep Grade arrows point uphill
  - Interstate/State Highway
  - Arterials
  - Bicycling Prohibited
  - Parks & Natural Attractions  
(Improved & Unimproved)

- Downtown Tacoma Points of Interest**
- County-City Building ①
  - Tacoma Main Library ②
  - Tacoma Municipal Building ③
  - Broadway Center for Performing Arts ④
  - Children's Museum of Tacoma ⑤
  - Greater Tacoma Convention Center ⑥
  - Tacoma Visitor Information Center ⑦
  - Tacoma Art Museum ⑧
  - University of Washington Tacoma ⑨
  - Washington State History Museum ⑩
  - Museum of Glass ⑪
  - Greyhound Bus Station ⑫
  - Freighthouse Square ⑬
  - Tacoma Dome ⑭
  - Lemay-America's Car Museum ⑮
  - Working Waterfront Maritime Museum ⑯
  - Karpeles Manuscript Museum ⑰
  - W.W. Seymour Botanical Conservatory ⑱
  - Evergreen State College ⑲
  - Stadium High School and Bowl ⑳
  - Buffalo Soldiers Museum ㉑
  - Tacoma Amtrak Station ㉒
  - Tacoma Dome Sounder Station ㉓
  - Link Light Rail Stops ㉔

The eighth edition of the Pierce County Bike Map identifies existing facilities, both on and off-road. It is not intended to serve as a planning document and does not identify future projects.

**Disclaimer**  
NOTICE TO BICYCLISTS: This map and accompanying information is intended solely to assist bicyclists in their selection of facilities to ride throughout Pierce County. In providing this information, Pierce County does not designate these facilities as formal bikeways. Pierce County assumes no liability for bicyclists who choose to travel upon any of the facilities shown on this map, nor does the County guarantee the stability, condition or fitness of any of the listed facilities for bicycling. Many of the facilities identified on this map cross and/or run on public roads that are exposed to daily wear and tear and degradation due to weather, motorized traffic, and other environmental factors. Facilities may contain pavement imperfections, including ruts, cracks, and bumps. Riders may encounter expansion joints, debris, encroaching vegetation, stormwater inlets, and other natural and manmade features. Riders should also remain alert for areas of visual impairment and other irregularities that may impact rider and motorist ability to see each other or potential road hazards. The chance that one may come into an area of visual impairment or a route irregularity warrants special care on the part of route users. This map includes facilities within multiple jurisdictions. Conditions and design elements may vary between jurisdictions.

It is the responsibility of the individual rider to remain alert at all times as to the conditions of the facility, pedestrian and other traffic on the facility, and the inherent potential for conflict in any shared-use space. Riders should always ride with care for their own safety as well as the safety of all other users of the facility or right-of-way. This map supersedes/ replaces all prior versions of the Pierce County Bike Map. Riders should consult the most current version of the map.

FREE PUBLICATION

**Pierce County**

# Bike Map

View the current Pierce County Bike Map online at [PierceCountyWa.org/BikeMap](http://PierceCountyWa.org/BikeMap)

Feedback or Comments?  
BikeMap@PierceCountyWa.gov

This bike map has been prepared by:  
Pierce County Planning and Public Works  
Office of the County Engineer

**Bicycling Laws**

According to the Revised Code of Washington (RCW), a bicycle is a legal road vehicle, just like a car. This means that bicycle riders have the same rights and responsibilities as motor vehicle drivers.

Here are some current bicycling laws to be aware of whether you are biking or driving a motor vehicle:

**Riding on the Road** - When riding on a road, a bicyclist has all the rights and responsibilities of a vehicle driver (RCW 46.61.795). Bicyclists who violate traffic laws may be ticketed.

**Roads Closed to Bicycles** - Some designated sections of the state's limited access highway system may be closed to bicycles for safety reasons. In addition, local governments may adopt ordinances banning cycling on specific roads or on sidewalks within business districts. For more information please visit [wsdot.wa.gov/travel/bicycling-walking](http://wsdot.wa.gov/travel/bicycling-walking).

**Riding at Night** - For night bicycle riding, a white front light (not a reflector) visible for 500 feet and a red rear reflector are required. A red rear light may be used in addition to the required reflector (RCW 46.61.780).

**Bicycle Helmets** - There is currently no state law requiring helmet use. However, some cities and counties (including Pierce County) do require helmets for children and adults. Find a list of jurisdictions that require helmets at [wsdot.wa.gov/travel/bicycling-walking](http://wsdot.wa.gov/travel/bicycling-walking).

**Information about other state bicycling laws:**

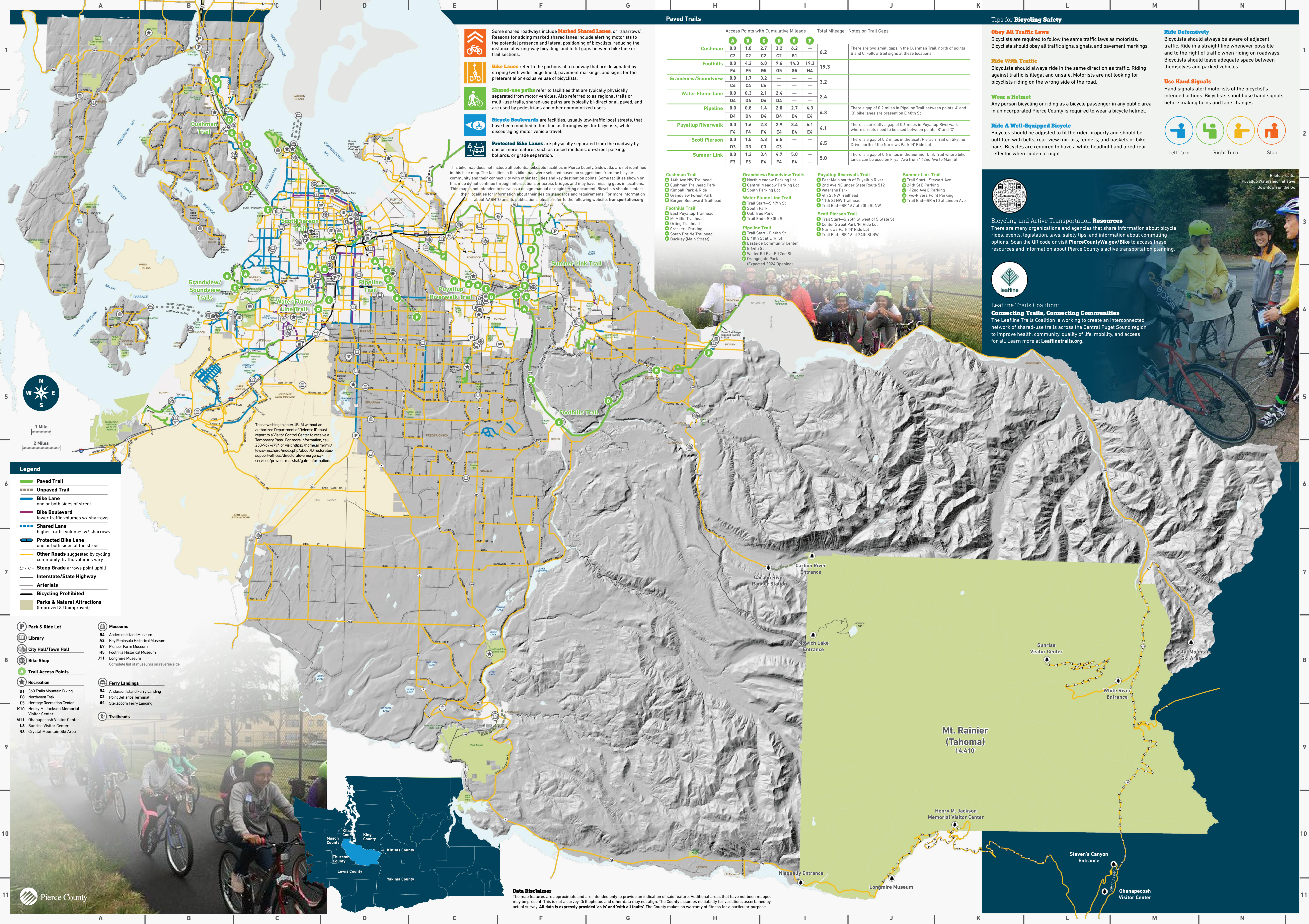
- **WSDOT Bicycle and Pedestrian Program**  
[wsdot.wa.gov/travel/bicycling-walking](http://wsdot.wa.gov/travel/bicycling-walking)
- **Washington Laws and Agency Rules**  
(800) 562-6000 • [leg.wa.gov/LawsAndAgencyRules](http://leg.wa.gov/LawsAndAgencyRules)
- **Washington Traffic Safety Commission**  
(360) 753-6197 • [wts.wa.gov](http://wts.wa.gov)

Bicyclists should contact local jurisdictions for information about local bicycling laws. Find information about bicycling laws for the unincorporated areas of Pierce County:

- **Pierce County Code**  
[pierce.county.codes/PCC/10.22](http://pierce.county.codes/PCC/10.22) (chapter 10.22)

- Library**
  - Transit Centers**
  - Colleges/Universities**
  - Park & Ride Lot**
  - City Hall/Town Hall**
  - Bike Shop**
  - Ferry Landings**
  - Museums**
  - Recreation**
  - Trailheads**
- Reverse side of map**
- B1 260 Trails Mountain Biking
  - F8 Northwest Trek
  - K10 Henry M. Jackson Memorial Visitor Center
  - M11 Ohanapeosh Visitor Center
  - L8 Sunrise Visitor Center
  - NB Crystal Mountain Ski Area





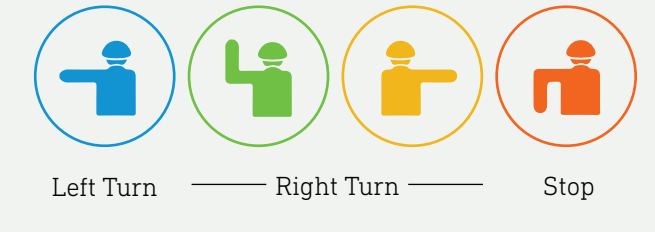
**Paved Trails**

- Shared-use paths** refer to facilities that are typically physically separated from motor vehicles. Also referred to as regional trails or multi-use trails, shared-use paths are typically bi-directional, paved, and are used by pedestrians and other nonmotorized users.
- Bike Lanes** refer to the portions of a roadway that are designated by striping (with wider edge lines), pavement markings, and signs for the preferential or exclusive use of bicyclists.
- Shared-use paths** refer to facilities that are typically physically separated from motor vehicles. Also referred to as regional trails or multi-use trails, shared-use paths are typically bi-directional, paved, and are used by pedestrians and other nonmotorized users.
- Bicycle Boulevards** are facilities, usually low-traffic local streets, that have been modified to function as thoroughways for bicyclists, while discouraging motor vehicle travel.
- Protected Bike Lanes** are physically separated from the roadway by one or more features such as raised medians, on-street parking, bollards, or grade separation.

Trail	Access Points with Cumulative Mileage	Total Mileage	Notes on Trail Gaps
Cushman	A 0.0 1.8 2.7 3.2 6.2	6.2	There are two small gaps in the Cushman Trail, north of points B and C. Follow trail signs at these locations.
	C2 C2 C2 C2 B1		
Foothills	F4 0.0 4.2 6.8 9.6 14.3 19.3	19.3	
	F5 F5 G5 G5 G5 H4		
Grandview/Soundview	C4 0.0 1.7 3.2	3.2	
	C4 C4 C4		
Water Flume Line	D4 0.0 0.3 2.1 2.4	2.4	
	D4 D4 D4 D4		
Pipeline	D4 0.0 0.8 1.4 2.0 2.7 4.3	4.3	There is a gap of 0.2 miles in Pipeline Trail between points 'A' and 'B'; bike lanes are present on E 48th St
	D4 D4 D4 D4 D4 E4		
Puyallup Riverwalk	F4 0.0 1.6 2.3 2.9 3.4 4.1	4.1	There is currently a gap of 0.6 miles in Puyallup Riverwalk where streets need to be used between points 'B' and 'C'
	F4 F4 F4 E4 E4 E4		
Scott Pierson	D3 0.0 1.5 4.3 6.5	6.5	There is a gap of 0.2 miles in the Scott Pierson Trail on Skyline Drive north of the Narrows Park 'N' Ride Lot
	D3 D3 C3 C2		
Summer Link	F3 0.0 1.2 3.4 4.7 5.0	5.0	There is a gap of 0.4 miles in the Summer Link Trail where bike lanes can be used on Fryar Ave from 142nd Ave to Main St
	F3 F3 F4 F4		

**Tips for Bicycling Safety**

- Obey All Traffic Laws**  
Bicyclists are required to follow the same traffic laws as motorists. Bicyclists should obey all traffic signs, signals, and pavement markings.
- Ride With Traffic**  
Bicyclists should always ride in the same direction as traffic. Riding against traffic is illegal and unsafe. Motorists are not looking for bicyclists riding on the wrong side of the road.
- Wear a Helmet**  
Any person bicycling or riding as a bicycle passenger in any public area in unincorporated Pierce County is required to wear a bicycle helmet.
- Ride A Well-Equipped Bicycle**  
Bicyclists should be adjusted to fit the rider properly and should be outfitted with bells, rear-view mirrors, fenders, and baskets or bike bags. Bicycles are required to have a white headlight and a red rear reflector when ridden at night.
- Ride Defensively**  
Bicyclists should always be aware of adjacent traffic. Ride in a straight line whenever possible and to the right of traffic when riding on roadways. Bicyclists should leave adequate space between themselves and parked vehicles.
- Use Hand Signals**  
Hand signals alert motorists of the bicyclist's intended actions. Bicyclists should use hand signals before making turns and lane changes.



This bike map does not include all potential bikeable facilities in Pierce County. Sidewalks are not identified in this bike map. The facilities in this bike map were selected based on suggestions from the bicycle community and their connectivity with other facilities and key destination points. Some facilities shown on this map do not continue through intersections or across bridges and may have missing gaps in locations. This map is not intended to serve as a design manual or engineering document. Bicyclists should contact their localities for information about their design standards and requirements. For more information about AASHTO and its publications, please refer to the following website: [transportation.org](http://transportation.org)

- Cushman Trail**
  - 14th Ave NW Trailhead
  - Cushman Trailhead Park
  - Kimball Park & Ride
  - Grandview Forest Park
  - Borgen Boulevard Trailhead
- Foothills Trail**
  - East Puyallup Trailhead
  - McMillin Trailhead
  - Orring Trailhead
  - Crocker—Parking
  - South Prairie Trailhead
  - Buckley (Main Street)
- Grandview/Soundview Trails**
  - North Meadow Parking Lot
  - Central Meadow Parking Lot
  - South Parking Lot
- Water Flume Line Trail**
  - Trail Start—S 47th St
  - South Park
  - Oak Tree Park
  - Trail End—S 80th St
- Pipeline Trail**
  - Trail Start—E 40th St
  - E 48th St at E 7<sup>th</sup> St
  - Eastside Community Center
  - E 64th St
  - Waller Rd at E 72nd St
  - Orangegate Park (Expected 2024 Opening)
- Puyallup Riverwalk Trail**
  - East Main south of Puyallup River
  - 2nd Ave NE under State Route 512
  - Veterans Park
  - 4th St NW Trailhead
  - 11th St NW Trailhead
  - Trail End—SR 167 at 20th St NW
- Scott Pierson Trail**
  - Trail Start—S 25th St west of S 5 State St
  - Center Street Park 'N' Ride Lot
  - Narrows Park 'N' Ride Lot
  - Trail End—SR 16 at 24th St NW
- Summer Link Trail**
  - Trail Start—Stewart Ave
  - 24th St E Parking
  - 142nd Ave E Parking
  - Two Rivers Point Parking
  - Trail End—SR 410 at Linden Ave



1 Mile  
2 Miles

- Legend**
- Paved Trail
  - Unpaved Trail
  - Bike Lane
  - Bike Boulevard
  - Shared Lane
  - Protected Bike Lane
  - Other Roads suggested by cycling community, traffic volumes vary
  - Steep Grade arrows point uphill
  - Interstate/State Highway
  - Arterials
  - Bicycling Prohibited
  - Parks & Natural Attractions (Improved & Unimproved)

- Park & Ride Lot
- Library
- City Hall/Town Hall
- Bike Shop
- Trail Access Points
- Recreation
  - B1 360 Trails Mountain Biking
  - F8 Northwest Trek
  - E5 Heritage Recreation Center
  - K10 Henry M. Jackson Memorial Visitor Center
  - M11 Ohanapesch Visitor Center
  - L8 Sunrise Visitor Center
  - N8 Crystal Mountain Ski Area
- Museums
  - B4 Anderson Island Museum
  - A2 Key Peninsula Historical Museum
  - E9 Pioneer Farm Museum
  - H5 Foothills Historical Museum
  - J11 Longfellow Museum
  - Complete list of museums on reverse side
- Ferry Landings
  - B4 Anderson Island Ferry Landing
  - C2 Point Defiance Terminal
  - B4 Stellaoom Ferry Landing
- Trailheads

**Data Disclaimer**  
The map features are approximate and are intended only to provide an indication of said feature. Additional areas that have not been mapped may be present. This is not a survey. Orthophotos and other data may not align. The County assumes no liability for variations ascertained by actual survey. All data is expressly provided 'as is' and 'with all faults'. The County makes no warranty of fitness for a particular purpose.

**Bicycling and Active Transportation Resources**  
There are many organizations and agencies that share information about bicycle rides, events, legislation, laws, safety tips, and information about commuting options. Scan the QR code or visit [PierceCountyWa.gov/Bike](http://PierceCountyWa.gov/Bike) to access these resources and information about Pierce County's active transportation planning.

**Leafline Trails Coalition: Connecting Trails, Connecting Communities**  
The Leafline Trails Coalition is working to create an interconnected network of shared-use trails across the Central Puget Sound region to improve health, community, quality of life, mobility, and access for all. Learn more at [Leaflinetrails.org](http://Leaflinetrails.org).

Photo credits: Puyallup Watershed Initiative, Downtown on the Go