



*"In every season,
in every climate..."*

Operable Glass Systems



www.aluarc.com



by Gürkan Building Elements

OVERVIEW

ABOUT GURKAN BUILDING ELEMENTS INC	02
ABOUT ALUARC	04
WHAT WE STAND FOR	06
HOW WE SERVE YOU	07
BENEFITS AND USES OF OUR SYSTEMS	08
ROOF SYSTEMS	10
SLIRO - Automatic Sliding Roof System	12
VERA - Fixed Roof System	14
CARPORT - Car Park Solution	16
VERTICAL SLIDING SYSTEM	18
VERTIARC - Vertical Sliding System	20
SLIDING SYSTEMS	22
SLIARC - Flat Threshold Sliding System	24
ISOSLIARC - Double Glazed Flat Threshold Sliding System	26
OVERVIEW OF THE SYSTEMS	28



ABOUT GURKAN BUILDING ELEMENTS

Gurkan Building Elements is a corporate that provides high-quality products and services of interior and exterior building elements internationally

Gurkan Building Elements Inc began its journey in 2001 with a commitment to build a long-standing trust and bring the best quality service to its customers as a u-PVC systems fabricator and installer in Rize Turkey.

Since 2001, Gurkan Building Elements has worked with well-respected, high-quality suppliers and with the most talented workforce. Providing our customers always with the best results has built our current customer portfolio. The main marketing strategy so far was our committed employees, honesty and high-quality service.

In the following years, we participated in design, manufacturing and installation projects of hotels, industrial venues and building complexes with systems of operable glass systems, aluminium and u-PVC windows and doors, as well as facade systems.





In the year 2014, thanks to understanding customer needs at the best and combining European technical expertise, we launched our own aluminium systems of façade systems, windows-doors and operable glass systems with our patented brand AluArc.

In the year 2016, we combined our European technical background with the design experience of the first operable glazing systems designers of Turkey. And in a short while, we began to deliver the best quality products combined with the best service of project design, manufacturing and installation at the right prices to more than 30 countries.

After five years of successful projects in Arabian Peninsula and serving big developers like Günel, Damac etc, by the year 2019, in order to meet the local demand and serve faster to the Arabian Peninsula, we launched our third premises in Dubai, UAE.

Currently, importing systems and providing project service to a wide range of customers in all continents, we aim to grow further internationally and go on being the sustainable, trustworthy business partner of our stakeholders by providing with the best system solution, best consultancy and best workmanship.



Gurkan Building
Rize establishment

2001

Deceuninck
partnership

First overseas
experience (Tbilisi)

2010

2014

Aluarc became
patented brand

Istanbul Headquarter
establishment

2015

2019

Opened
Dubai Headquarter

Opened
Morocco Headquarter

2022



ABOUT ALUARC

AluArc which is a trademark of Gurkan Building Elements Inc, provides flexible spaces and outdoor living solutions internationally

AluArc systems are fruits of a combination of 30 years of Turkish operable glass system design expertise and the technical background of Gurkan Building Elements Inc's European designers. Our systems have gained great satisfaction from our customers around the world in providing them extra spaces, flexible rooms and outdoor living solutions.

System parts were uniquely designed by our technicians who also inspired and made designs for other system companies in Turkey. At the same time, we became the first company in Turkey to produce local glazing accessories. And all accessories are manufactured in our premises with high technology machinery by our experienced employees.



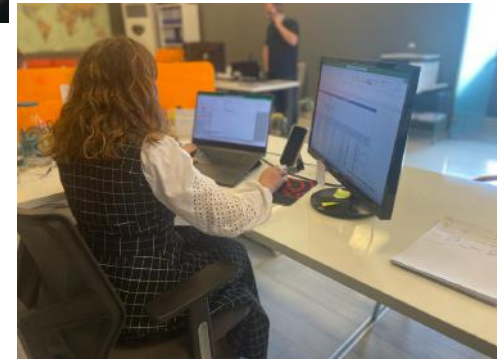
By Aluarc Operable Glass Systems, we aim at producing perfectly running systems that don't have the design deficits of the current brands in the sector so, creating the best value for our dealers.

By today, we are proud to have completely our own design of folding, sliding, top hanging and operable roof glazing systems that ensure customer satisfaction with high quality products and service. Our systems get more and more acknowledged internationally, thanks to their quality, installation ease and aesthetical means, as well as the design service and technical support that we provide to our customers.



WHAT WE STAND FOR

- > **SUSTAINABILITY:** Our management, just-in-time workflow and consistency in our services are to provide long term success, thanks to our in-depth knowledge of the industry.
- > **TRUST:** Understanding our customer needs, serving them at its best and keeping our promises are our core values above all.
- > **QUALITY AND DURABILITY:** As our quality management systems certified by ISO and CE labelling, as well as our materials by Qualanod, Qualicoat and Germany PfB test institute, we only use the best quality aluminium and accessories.
- > **WIDE RANGE OF CHOICES:** As being the main producer, we are able to serve you all the colours and options of accessories promptly.



- > **RIGHT DESIGN SOLUTIONS:** Our Austrian based R&D team offers you profound understanding and the best solutions for your complex project needs.
- > **INTERNATIONAL EXPERIENCE:** Having variety of nations in our work team and also serving to more than 20 countries in different continents, we understand different perspectives and speak your language.
- > **INNOVATION:** Our goal for the perfect synthesis of design and functionality, lead us always to develop both visually and architecturally superior solutions.

HOW WE SERVE YOU

- **PROJECT SOLUTIONS:** A team composed of Research and Development experts, civil engineers and architects evaluates your project and offer the best solution according to your project needs. This also enables right and meaningful cost calculation.
- **DESIGN:** Other than our current product portfolio, we are able to design custom made solutions/products according to your regional or project needs.
- **CALCULATION SOFTWARE:** Our dealers are able to draw, calculate and price their projects easily with the AluArc software.



- **CONTINUOUS SUPPORT AND TRAINING FOR OUR DEALERS:** Our team of experts follows up your project from a-to-z. We provide on-site manufacturing and installation training for our products as well as online support to wherever you are.
- **MANUFACTURING:** Quality and precision play a key role during production. All AluArc systems are manufactured with best quality raw materials with state-of-art machinery by trained teams following the quality management systems.
- **ON-SITE INSTALLATION:** Additional to installation manuals and online support, we have installation teams to undertake your installation projects that can serve you in all countries.
- **COMPLETION:** Short delivery times with maximum quality is a must for us. So, we continuously monitor our workflow to ensure customer satisfaction in final customer acceptance.

BENEFITS AND USES OF OUR SYSTEMS



Enables to create extra spaces and enlarges your living / service spaces and creating shade when needed.



Increases the security by their locking systems.



Protects from harsh weather conditions, dirt, noise etc. while providing thermal insulation.



Easy to clean thanks to folding and sliding panels.



Reduces heating/cooling expenses of the building by increased insulation and extends building life cycle by reduced corrosion.



Silent and comfortable use with wheel system design.



Enables maximum transparency comparing to standard window systems.



Ability to glaze different angular spaces.





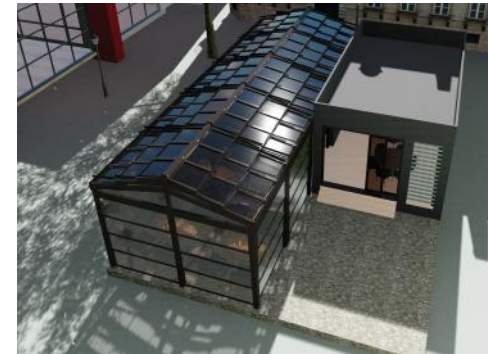
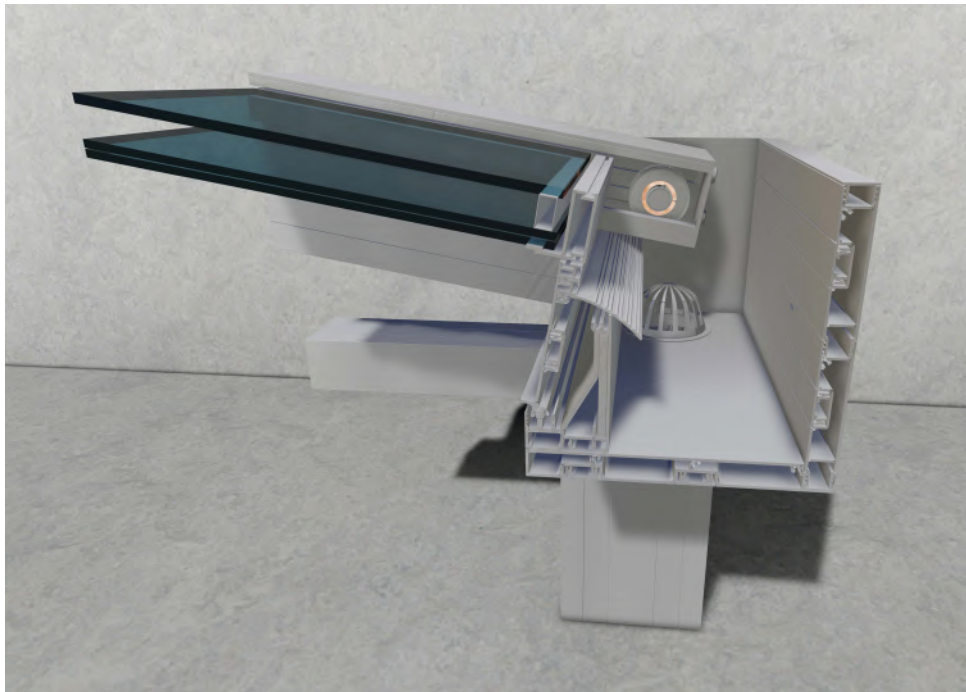
ROOF SYSTEMS



SLIRO

Automatic Sliding Roof System

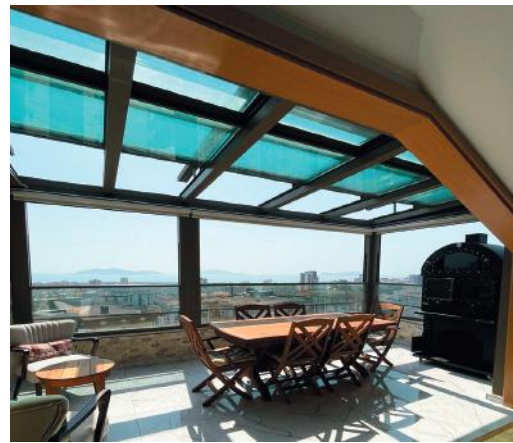
Stylish sliding roof solution
with wide scope of customisation



Technical Details:

Panel Width	1100 mm to 1300 mm
Panel Length	800 mm to 1500 mm
Glass Thickness	10 mm single or 38 mm double glass
Glass Type	Tempered & laminated
Roof Pitches	5° to 25°
System Operation	Sliding
Profile Colours (in stock)	Press





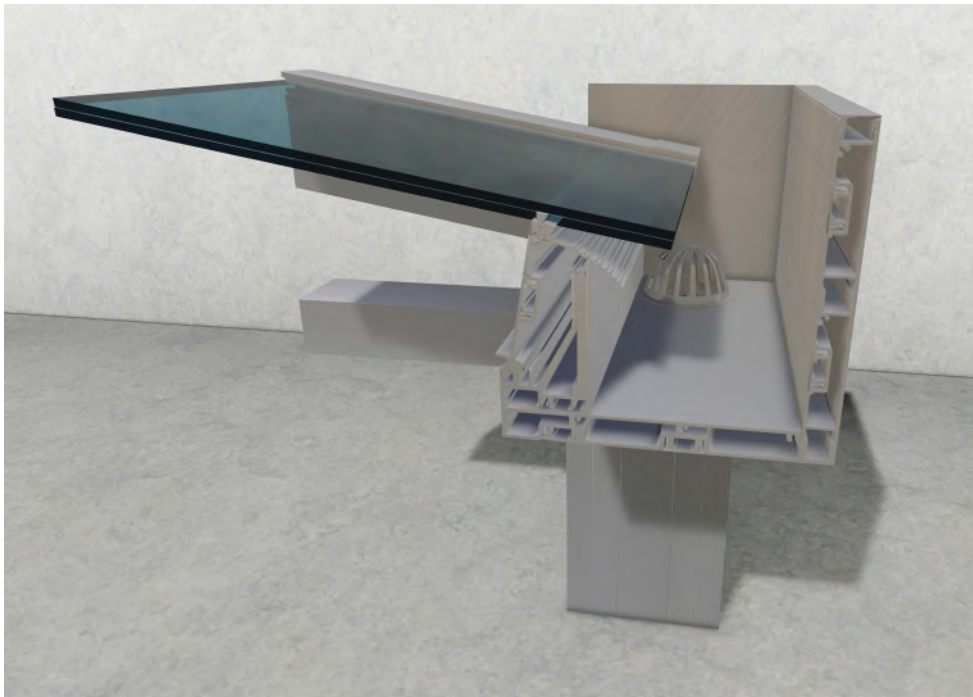
System Features:

- **Patented system** that enables long years durability and comfort in use with a minimal designed integrated units
- Especially suitable for terraces, garden enclosures, winter garden roofs, pool enclosures, restaurants and smoking rooms
- System is composed of sliding modules that move over each other and stack under the fixed part
- **%100 water and air tightness** thanks to its unique profile design
- Cost reduction through **high modular design and short installation times**
- **Provides wall solutions** at the same time
- Strong motor provides uniform, reliable movement of the sliding and customised opening speeds
- Options to **use with glass, polycarbonate or other panel systems**
- Concealed guttering that creates minimal and contemporary finish
- A completely modular construction enables you to start with the basic roof and then **add shading products, lighting and additional heating**
- Fully adaptation with vertical movable glass systems to convert into a full glass room
- Optional mounting **as roof overhang or as a free standing system without a need of steel construction**
- Corrosion resistant metal accessories and stainless steel screws

VERA

Fixed Roof System

Functional and elegant
veranda solution



Technical Details:

Panel Width	1000 mm
Panel Length	6000 mm
Glass Thickness	10 mm or 16 mm laminated glass
Glass Type	Tempered & laminated
Roof Pitches	5° to 25°
System Operation	Fixed
Profile Colours (in stock)	Press





System Features:

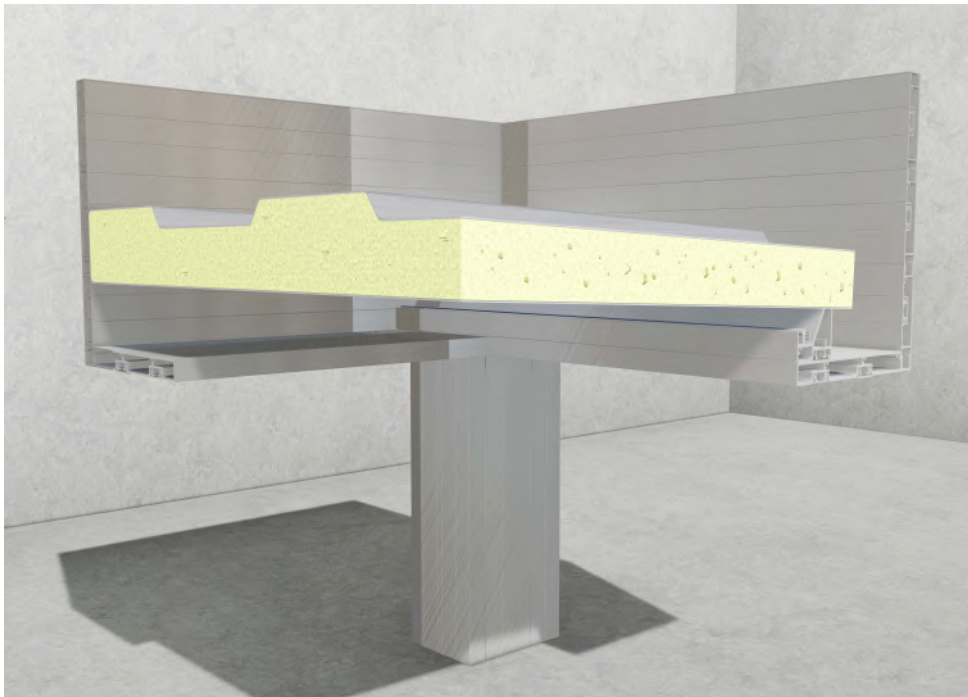
- **Patented system** that enables long years durability and comfort in use with a minimal designed integrated unit
- Thanks to its versatile system parts, it can be used as **a glass roof, carport or a pergola** with desired thickness of materials such as glass, polycarbonate, composite panel, sandwich panel and aluminium beams etc.
- **%100 water and air tightness** thanks to its unique profile and gasket design
- Cost reduction through **high modular design and short installation times**
- Options to use with glass, polycarbonate or other panel systems
- Concealed guttering that creates minimal and contemporary finish
- **Provides wall solutions** at the same time
- A completely modular construction enables you to start with the basic roof and then **add shading products, lighting and additional heating**
- Fully adaptation with vertical movable glass systems to convert into a full glass room
- Optional mounting **as roof overhang or as a free standing system without a need of steel construction**
- Corrosion resistant metal accessories and stainless steel screws



CARPORT

Car Park Solution

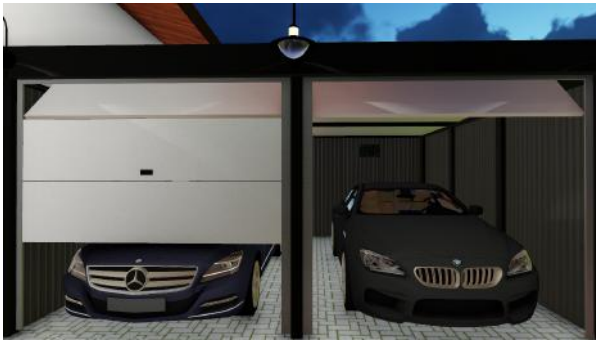
Practical, durable, outdoor,
car parking solution



Technical Details:

Panel Width	900 mm to 1200 mm
Panel Length	4000 mm to 7000 mm
Sandwich Panel Thickness	40 mm to 70 mm
Roof Pitches	5° to 25°
System Operation	Fixed
Profile Colours (in stock)	Press





System Features:

- **Patented system** that enables long years durability and comfort in use with a minimal designed integrated units
- Cost reduction through **high modular design and short installation times**
- Options to use with polycarbonate or other panel systems
- Concealed guttering that creates minimal and contemporary finish
- **Provides wall solutions** at the same time
- A completely modular construction enables you to start with the basic roof and then **add shading products, lighting and additional heating**
- Fully adaptation with vertical movable glass systems to convert into an additional room
- Optional mounting **as roof overhang or as a free standing system without a need of steel construction**
- Corrosion resistant metal accessories and stainless steel screws



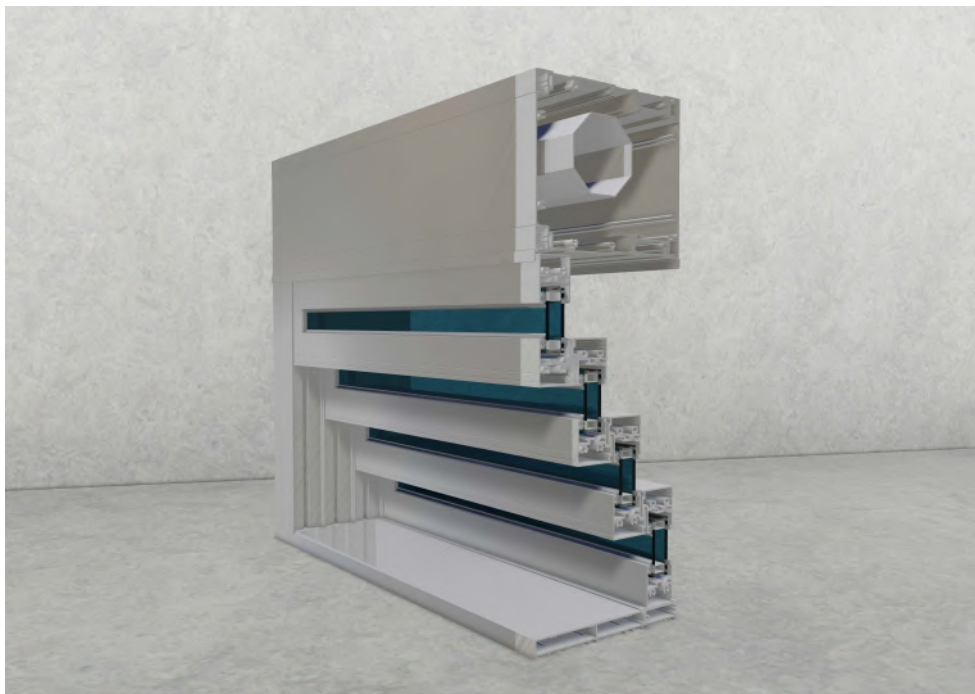
VERTICAL SLIDING SYSTEM



VERTIARC

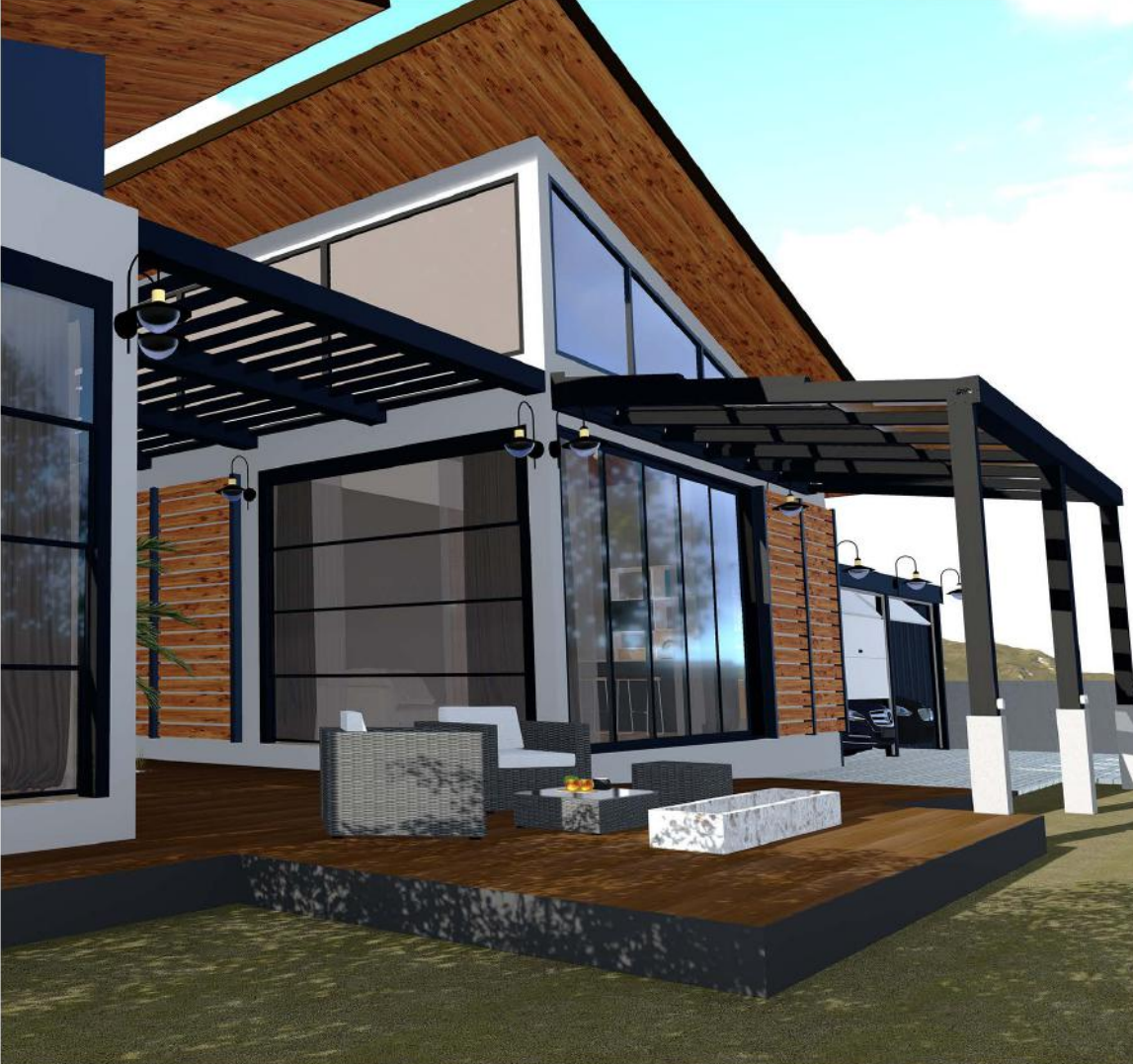
Vertical Sliding System

Where endurance
meets aesthetics



Technical Details:	
Maximum System Height	3600 mm
Maximum Panel Width	4000 mm
Glass Thickness	24 mm thick double glass
Glass Type	Tempered/laminated
System Operation	Vertical sliding, stacking at top or at the bottom
Profile Colours (in stock)	Press
Profile Cap Colours (in stock)	Black, anthracite grey

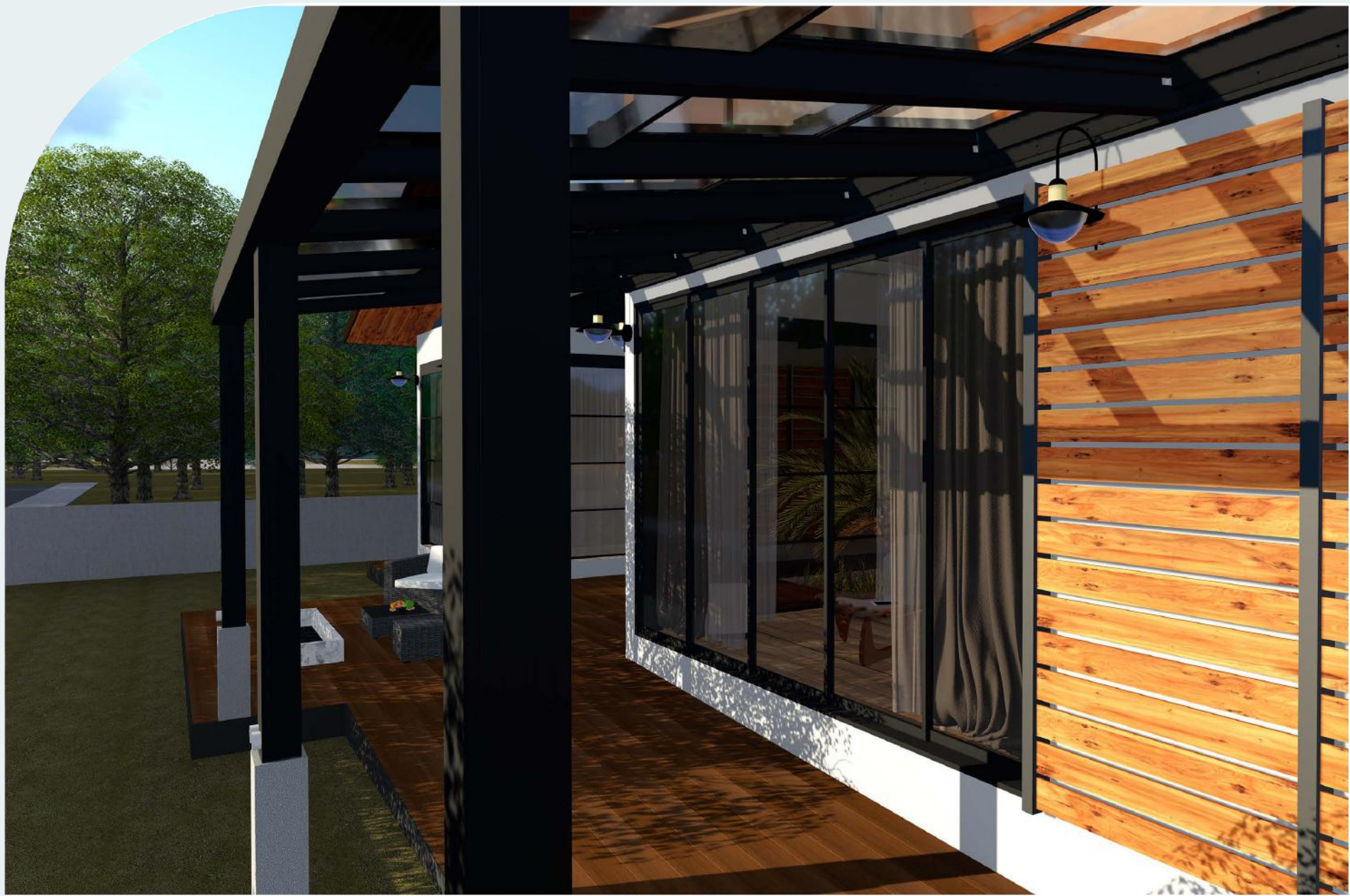




System Features:

- System allows you to create open or closed spaces without occupying extra space and allows effective ventilation without a security risk
- **Strong chains of moving system** ensures highest security and long years durability with minimal maintenance
- **Easy manufacturing** thanks to easily inserted parts of the mechanism that doesn't require screwing
- Panel profiles that allow using **single or double glass**
- Interlocking structure of panel profiles and insulation brushes that are used in all sides of the system ensure **the highest insulation**
- Robust profile structure, 3 panel design and interlocking between the panels, allow highest wind resistance and security
- **Aesthetic caps of track profile** and elegant design of track and panel profiles, allow maximum transparency
- Photocell mechanism that increases the usage security
- **Maximum stability of panels** even in case of a power outage
- 120 N - 275 kg strong motor mechanism that is hidden at top track block, ensures smooth and well-proportioned movement of panels
- Panels can either collect at the top to create a non-threshold walk-through area or at the bottom to create a balustrade





SLIDING SYSTEMS

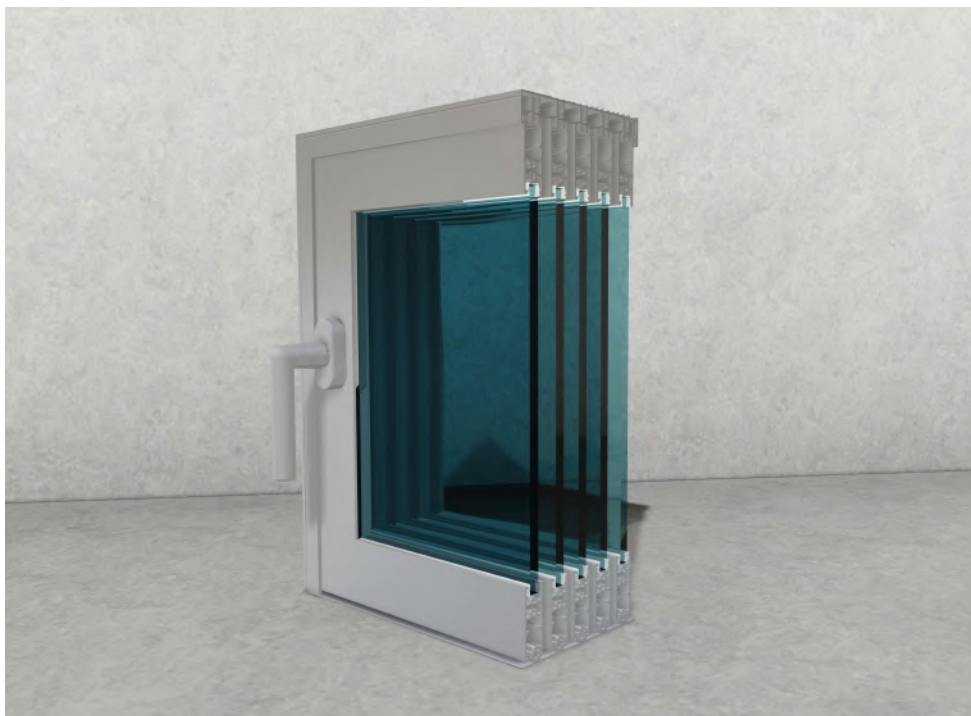


NEW

SLIARC

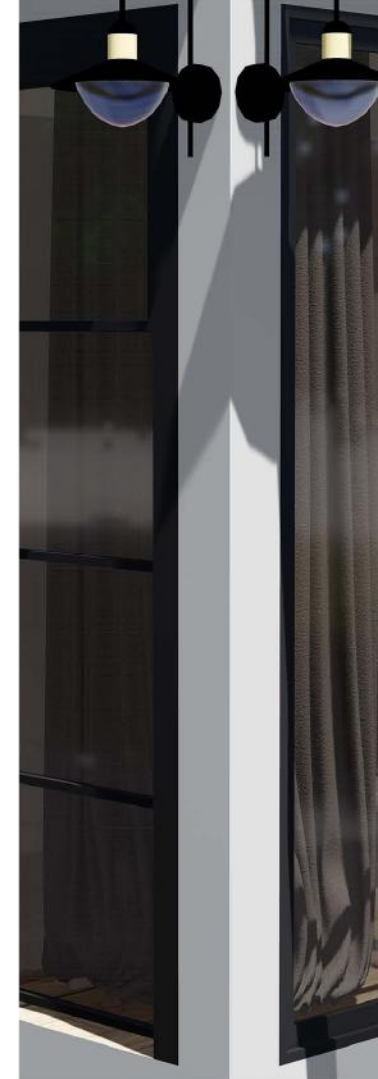
Flat Threshold Sliding System

Non-threshold sliding system with thin profile thickness



Technical Details:

Maximum System Height	3000 mm
Maximum Panel Width	1000 mm
Glass Thickness	6 mm, 8 mm, 10 mm or 12 mm
Glass Type	Tempered/laminated
System Operation	Horizontal slide in consecutive tracks
Profile Colours (in stock)	Press
Profile Cap Colour Options (in stock)	Anthracite grey, black





System Features:

- Maximum functionality with optional rail options (2, 3, 4 and 5)
- Practical manufacturing and assembly thanks to the easy-to-attach mounting devices
- Genuine design, extra security
- Applicability in 90° turned corners
- Practical manufacturing and assembly' thanks to the easy-to-attach mounting devices
- Offers optional glass options
- Provides sound and heat insulation thanks to its sealed design

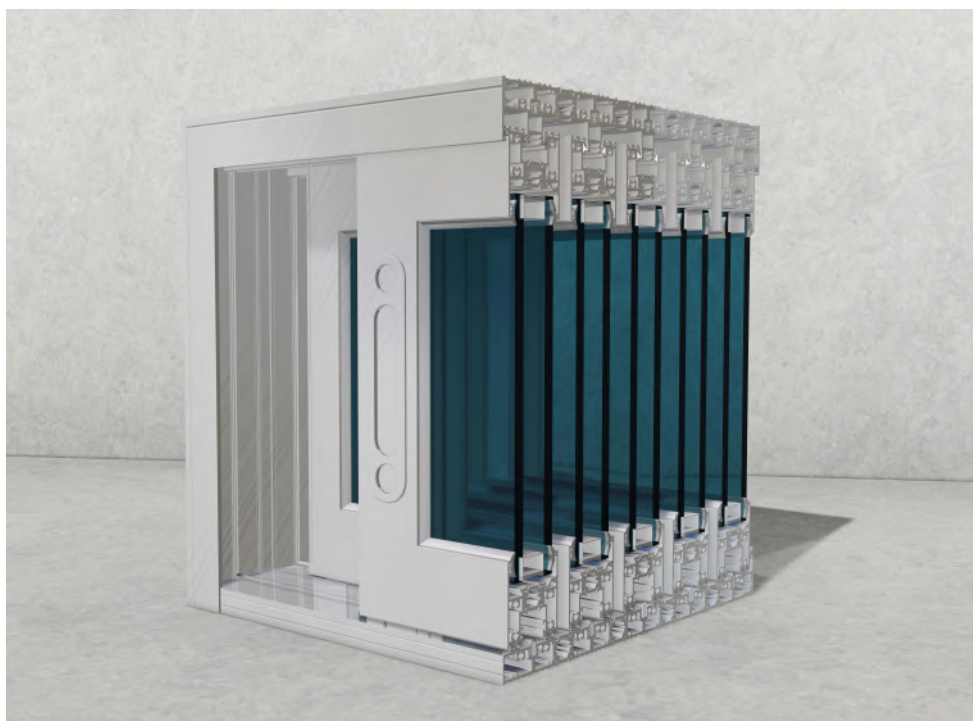


NEW

ISOSLIARC

Double Glazed Flat Threshold Sliding System

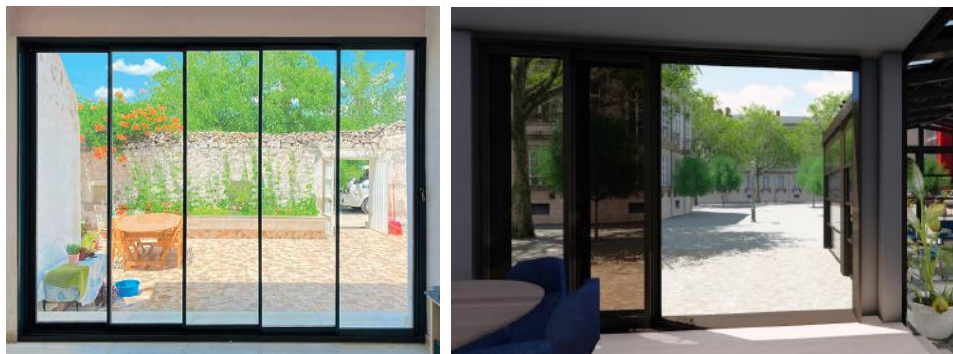
Enjoy the sliding system
with enhanced insulation



Technical Details:

Maximum System Height	3000 mm
Maximum Panel Width	1000 mm
Glass Thickness	24 mm to 36 mm
Glass Type	Tempered/laminated
System Operation	Horizontal slide in consecutive tracks
Profile Colours (in stock)	Press
Profile Cap Colour Options (in stock)	Anthracite grey, black





System Features:

- Maximum performance in system assembly thanks to adjustable bearings
- Maximum 'functionality' with optional rail options (2, 3, 4 and 5)
- Applicability in 90° turned corners
- Elegant design, maximum insulation and minimal design
- Extra functionality in manufacturing and assembly
- Offers optional glass options
- Genuine design, extra security



OVERVIEW OF THE SYSTEMS

		SLIRO	VERA	CARPORT	VERTIARC	SLIARC	ISOSLIARC
		Automatic Sliding Roof System	Fixed Roof System	Car Park Solution	Vertical Sliding System	Flat Threshold Sliding System	Double Glazed Flat Threshold Sliding System
Dimensions	System Height	800-1500 mm	6000 mm	Panel Length 4000-7000 mm	3600 mm	3000 mm	3000 mm
	Panel Width	1100-1500 mm	1000 mm	900-1200 mm	4000 mm	1000 mm	1000 mm
System Operation		Horizontal slide in consecutive tracks	Fixed	Fixed	Vertical sliding and stacking at top or at the bottom	Horizontal slide in consecutive tracks	Horizontal slide in consecutive tracks
Glass Type		Tempered & Laminated	Tempered / Laminated	Roof Pitches 5° to 25°	Tempered / Laminated	Tempered / Laminated	Tempered / Laminated
Glass Thickness		10 mm or 38 mm Glass	10 mm or 16 mm	Sandwich Panel Thickness 40 mm to 70 mm	24 mm Double Glass	6 mm, 8 mm, 10 mm or 12 mm	24 mm or 36 mm
In stock profile colours		Press	Press	Press	Press	Press	Press
In stock accessory colours		—	—	—	Anthracite grey, black	Anthracite grey, black	Anthracite grey, black