

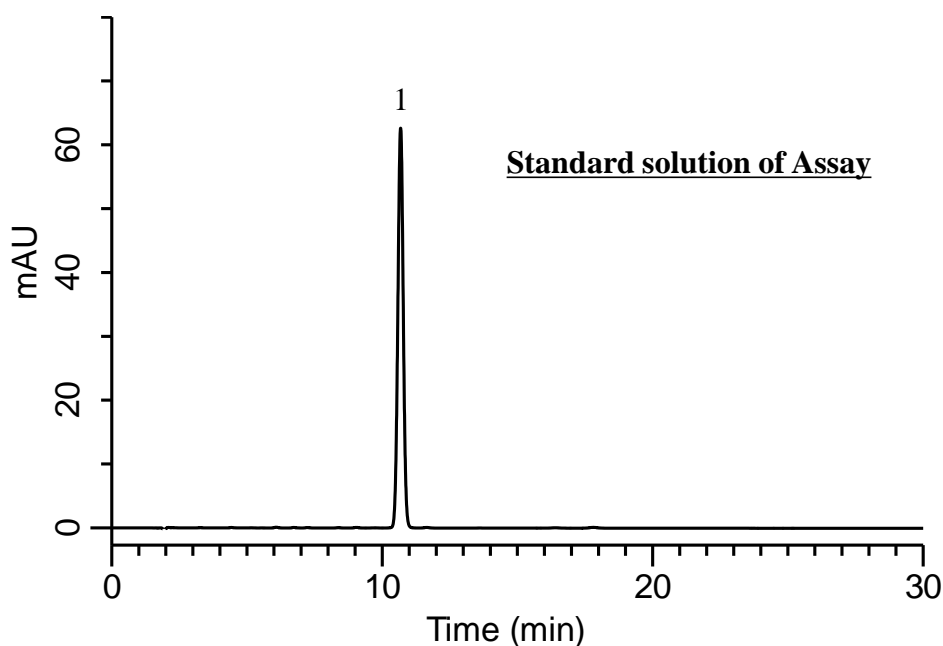
InertSearch for LC

Inertsil Applications

Analysis of Prasugrel hydrochloride

(Under the Condition of USP42-NF37)

Data No. LB625-0812



Conditions

System : GL7700 HPLC system
Column : InertSustainSwift C18
(5 μ m, 150 x 4.6 mm I.D.)
Column Cat. No. : 5020-88026
Eluent : A) CH₃CN
B) Buffer*
A/B = 35/65, v/v
Flow Rate : 1.0 mL/min
Col. Temp. : 40 °C
Detection : UV 260 nm (PD7752 PDA Detector)
Injection Vol. : 10 μ L
Sample : Standard

* 10 mM monobasic potassium phosphate in water.
Adjust with phosphoric acid to a pH of 2.8.

Analyte:

1. Prasugrel hydrochloride 0.1 mg/mL
Symmetry factor : 1.01 (\leq 2.0)
RSD of the peak area (%)(n=6) : 0.11 (\leq 1.0)