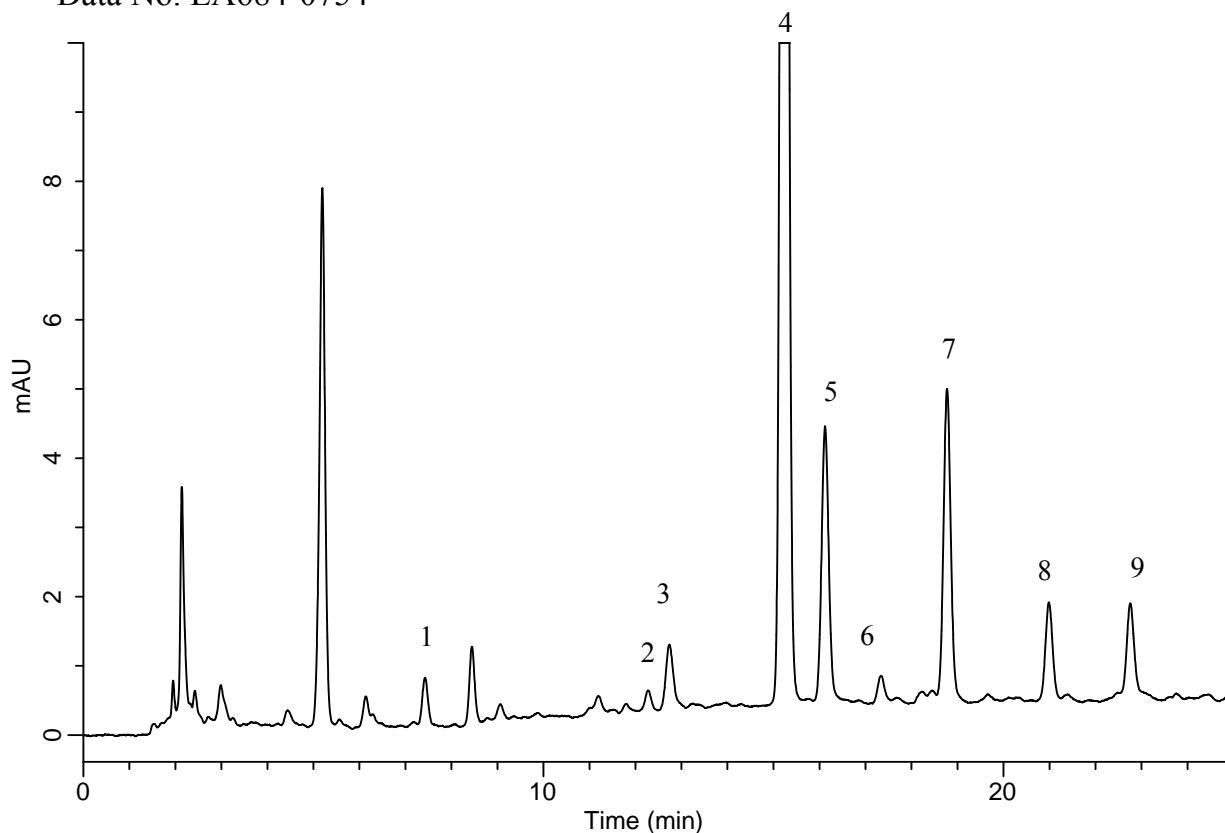


# InertSearch™ for LC

Inertsil® Applications

## Analysis of Catechins in a tea

Data No. LA684-0754



### Conditions

**System** : GL-7400 HPLC System  
**Column** : Inertsil ODS-3 (4 µm, 150 x 4.6 mm I.D.)  
**Column Cat. No.** : 5020-04645  
**Eluent** : A) CH<sub>3</sub>OH  
          : B) 10 mM NaH<sub>2</sub>PO<sub>4</sub>  
          : A/B = 10/90 – 30 min – 50/50. v/v  
**Flow Rate** : 1.0 mL/min  
**Col. Temp.** : 40 °C  
**Detection** : UV 280 nm (GL-7450 UV Detector)  
**Injection Vol.** : 10 µL

### Analyte

1. Gallo catechin (GC)
2. Epigallo catechin (EGC)
3. Catechin (C)
4. Caffeine
5. Epigallo catechingallate (EGCg)
6. Epicatechin (EC)
7. Gallo catechingallate (GCg)
8. Epicatechingallate (ECg)
9. Catechingallate (Cg)