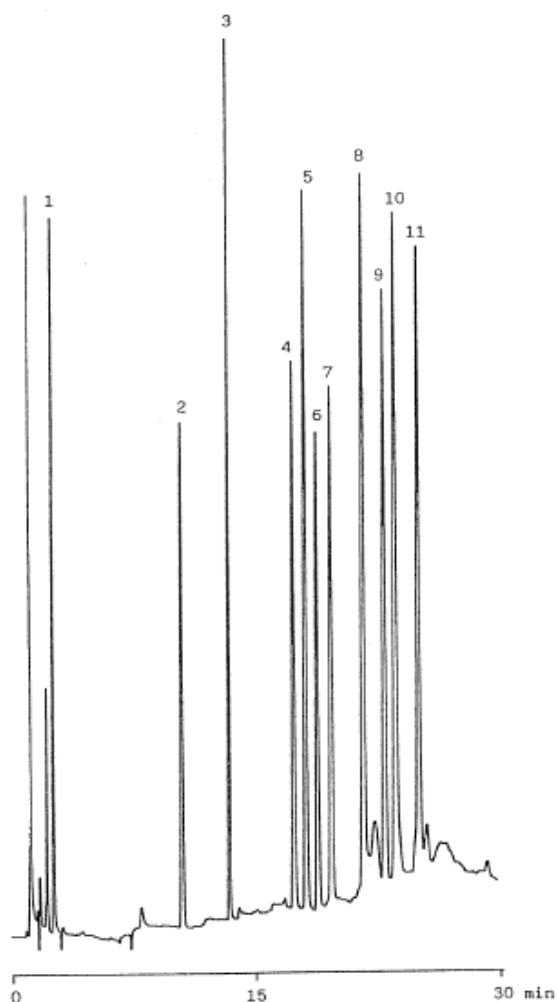


InertSearch™ for LC

Inertsil® Applications

Pesticides

Data No. LA277-0000



Column : Inertsil C4
5 μ m
150 \times 4.6mm I.D.

Column Cat. No. : 5020-01401

Eluent : A: CH₃CN/15mM IPCC-12A+15mM NaH₂PO₄=20/80
B: CH₃CN/15mM IPCC-12A+15mM NaH₂PO₄=70/30
A/B 100/0 \rightarrow (20min) \rightarrow 0/100
IPCC-12A: Sodium 1-Dodecylsulfate

Flow rate : 1.0 mL/min.

Col. Temp. : 40°C

Detection : UV 240 nm

Injection Vol. :

Sample :

Solutes : 1. Asulam
2. Thiuram
3. Oxine-copper
4. Propyzamide
5. Napropamide
6. Iprodione
7. Flutolanil
8. Diazinon
9. EPN
10. Butamifos
11. Pendimethalin