

GROUND FLOOR  
**MEDICAL CONDO**  
FOR SALE

PRICE	\$1,395,000
APPROX SIZE	959 SQ FT
COMMON CHARGES	\$1,627 PER MONTH
ASSESSMENT	\$1,627 PER MONTH
FINANCING	50% MAXIMUM
TAXES	\$27,533 PER YEAR



**25 CENTRAL PARK WEST, 1R**  
LINCOLN SQUARE, BETWEEN WEST 62ND STREET AND WEST 63RD STREET

## LAYOUT

- WAITING ROOM
- RECEPTION
- THREE EXAM ROOMS
- OFFICE/CONSULT
- RESTROOM

## ADDITIONAL FEATURES

- CENTRAL AIR CONDITIONING
- ADAPTABLE TO ANY MEDICAL SPECIALTY





**Paul L Wexler**

LICENSED ASSOCIATE  
REAL ESTATE BROKER

P: 212.836.1075  
E: PWexler@corcoran.com

**Josef Yadgarov**

LICENSED ASSOCIATE  
REAL ESTATE BROKER

P: 212.836.1097  
E: josef.yadgarov@corcoran.com

**Kurt Herold**

LICENSED ASSOCIATE  
REAL ESTATE BROKER

P: 212.323.3817  
E: kherold@corcoran.com

**Alisia Ramlochan**

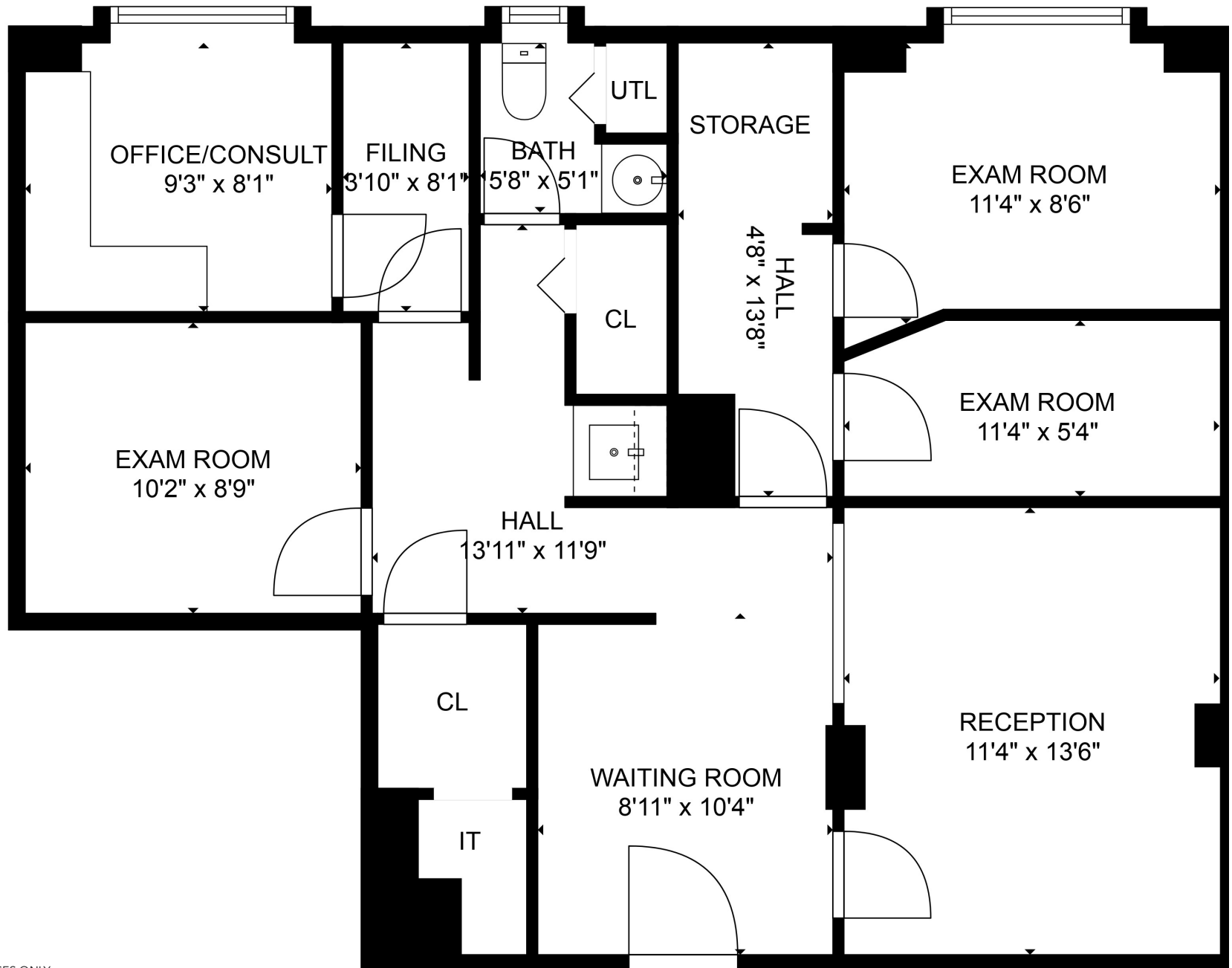
LICENSED ASSOCIATE  
REAL ESTATE BROKER

P: 212.893.1450  
E: alisia.ramlochan@corcoran.com

**Cosmin Bitu**

LICENSED REAL ESTATE  
SALESPERSON

P: 917.602.5754  
E: cosmin.bitu@corcoran.com



FLOOR PLAN FOR ILLUSTRATIVE PURPOSES ONLY