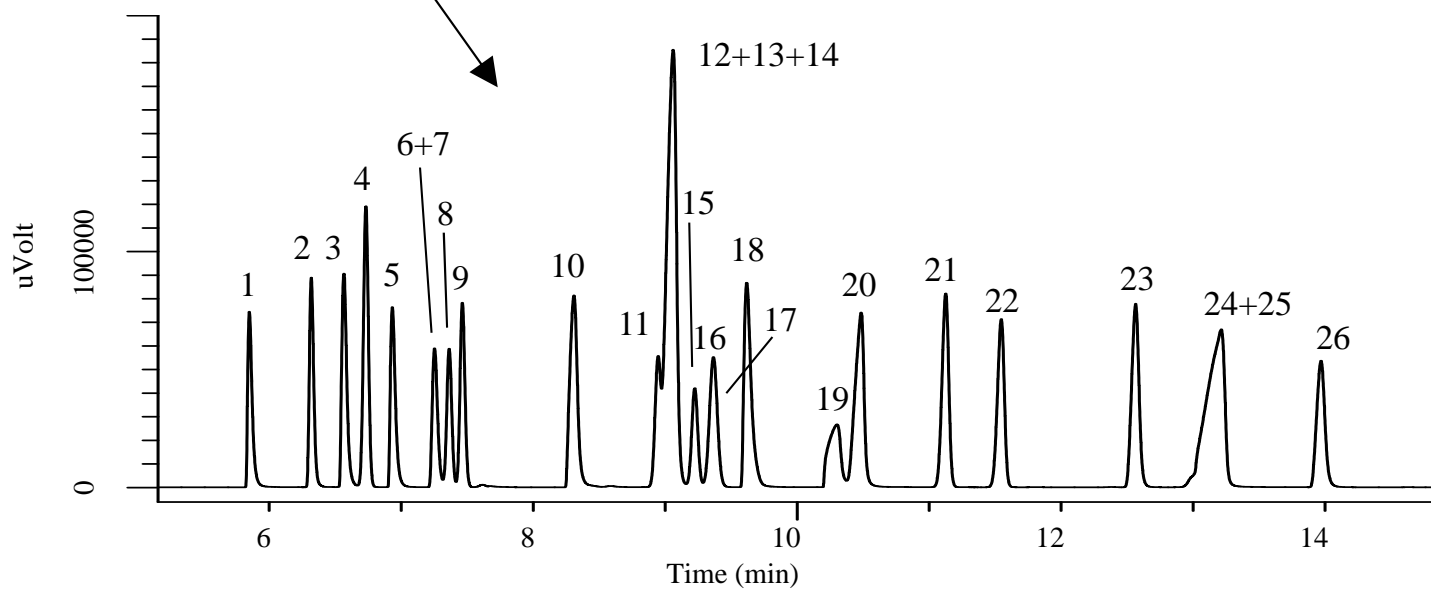
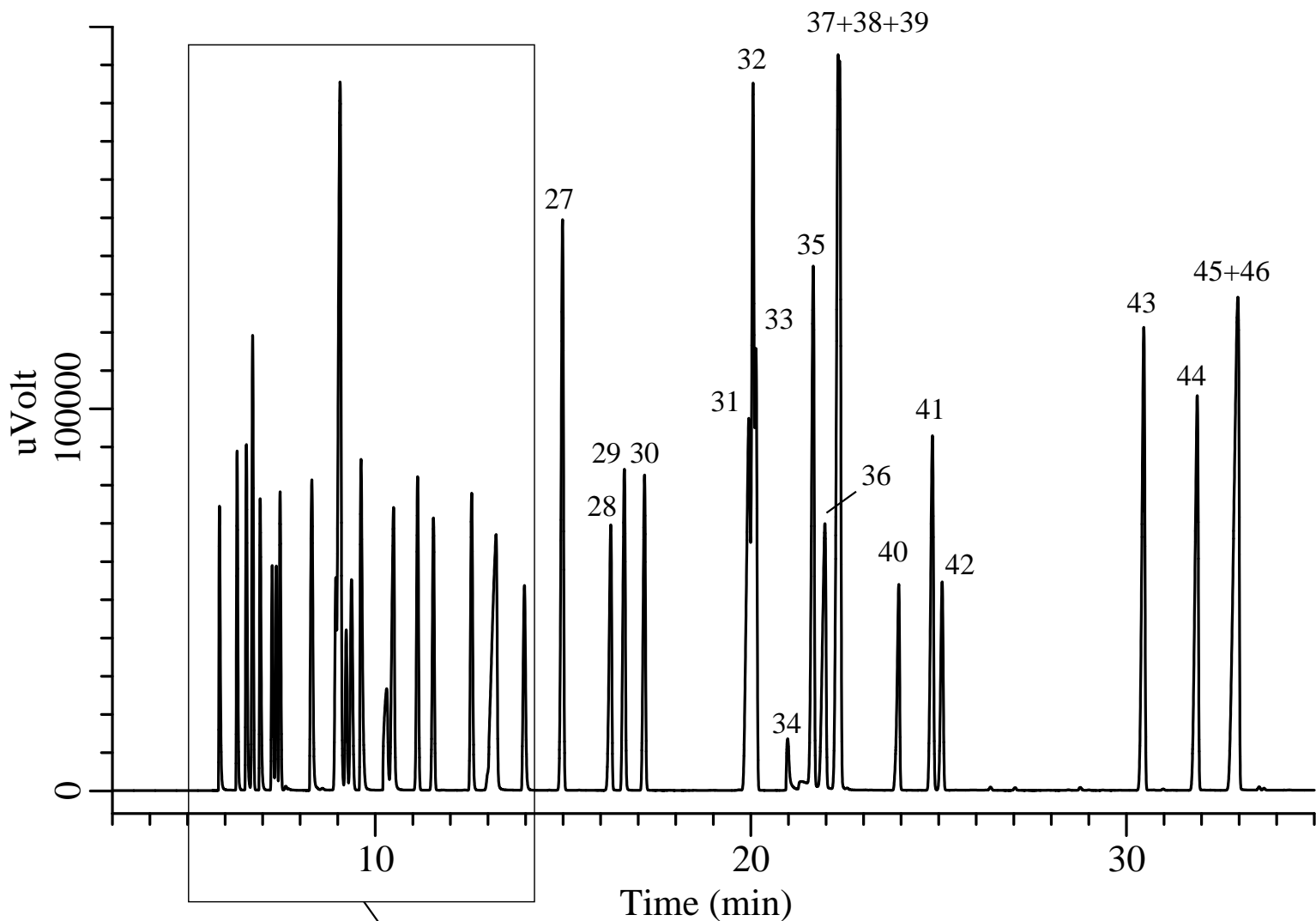


## Organic Solvents

Data No. GA107-0875



# InertSearch™ for GC

InertCap® Applications

## Organic Solvents

Data No. GA107-0875

### Conditions

<b>System</b>	: GC/FID
<b>Column</b>	: InertCap 17 0.25 mm I.D. x 60 m df = 0.25 µm
<b>Col. Cat. No.</b>	: 1010-65162
<b>Col. Temp.</b>	: 40 °C (5 min hold) - 4 °C/min - 230 °C (5 min hold)
<b>Carrier Gas</b>	: He 130 kPa
<b>Injection</b>	: Split flow 100 mL/min 250 °C
<b>Detection</b>	: FID Range 10 <sup>1</sup> 250 °C
<b>Sample Size</b>	: Mixed evenly 1.0 µL

### Analyte :

- |   |   |
|---|---|
| 1. Methanol                               | 24. 3-Methyl-1-butanol(Isoamyl alcohol)       |
| 2. Ethyl ether                            | 25. 2-Ethoxyethanol                           |
| 3. 2-Propanol (Isopropyl alcohol)         | 26. 1,4-Dioxane                               |
| 4. <i>n</i> -Hexane                       | 27. Toluene                                   |
| 5. Acetone                                | 28. Tetrachloroethylene                       |
| 6. Carbon disulfide                       | 29. 2-Hexanone(MBK)                           |
| 7. Methyl acetate                         | 30. <i>n</i> -Butyl acetate                   |
| 8. Dichloromethane                        | 31. <i>p</i> -Xylene                          |
| 9. <i>trans</i> -1,2-Dichloroethylene     | 32. <i>m</i> -Xylene                          |
| 10. 2-Butanol                             | 33. Chlorobenzene                             |
| 11. <i>cis</i> -1,2-Dichloroethylene      | 34. <i>N,N</i> -Dimethylformamide             |
| 12. 2-Butanone(MEK)                       | 35. <i>o</i> -Xylene                          |
| 13. 2-Methyl-1-propanol(Isobutyl alcohol) | 36. 1-Methylcyclohexanol                      |
| 14. Ethyl acetate                         | 37. Cyclohexanol                              |
| 15. Chloroform                            | 38. 2-Butoxyethanol(Butyl cellosolve)         |
| 16. 1,1,1-Trichloroethane                 | 39. Styrene                                   |
| 17. Carbon tetrachloride                  | 40. 2-Ethoxyethyl acetate(Cellosolve acetate) |
| 18. Tetrahydrofuran                       | 41. Cyclohexanone                             |
| 19. 2-Methoxyethanol(Methyl cellosolve)   | 42. 1,1,2,2-Tetrachloroethane                 |
| 20. 1-Butanol                             | 43. 1,2-Dichlorobenzene                       |
| 21. 1,2-Dichloroethane                    | 44. <i>o</i> -Cresol                          |
| 22. Trichloroethylene                     | 45. <i>m</i> -Cresol                          |
| 23. <i>n</i> -Propyl acetate              | 46. <i>p</i> -Cresol                          |