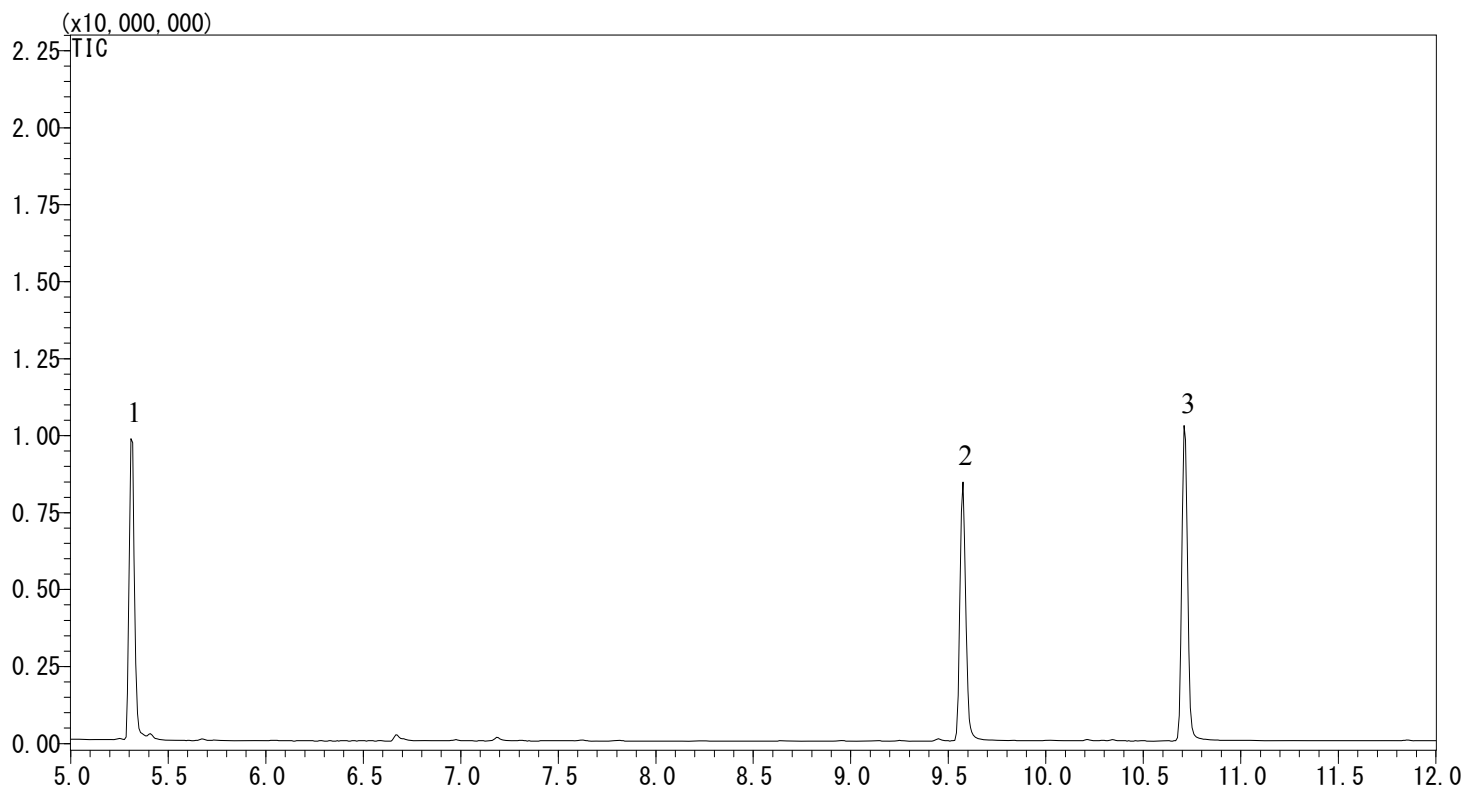


InertSearch™ for GC

InertCap® Applications

Tobacco

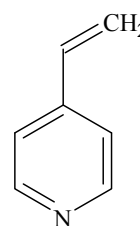
Data No. GA143-0875



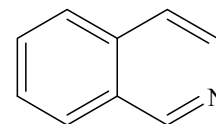
Conditions

- System** : GC/MS
Column : InertCap 5MS/Sil
0.25 mm I.D. x 30 m df = 0.25 μ m
Col. Cat. No. : 1010-15142
Col. Temp. : 60 °C (1 min hold) - 10 °C/min
- 280 °C (7 min hold)
Carrier Gas : He 36.5 cm/sec
Injection : Splitless 1 min Vent flow 50 mL/min
250 °C
Detection : MS Scan (45 - 500m/z)
Interface Temp. 280 °C
Sample Size : 10 μ g/mL in IPA
1.0 μ L
Analyte : 1. 4-Vinylpyridine
2. Isoquinoline
3. Nicotine

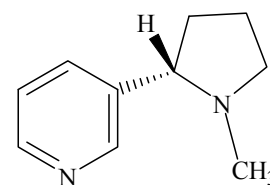
Chemical Structure



1. 4-Vinylpyridine



2. Isoquinoline



3. Nicotine

Structures are created using Chemistry 4-D Draw which is provided by ChemInnovation Software, Inc.