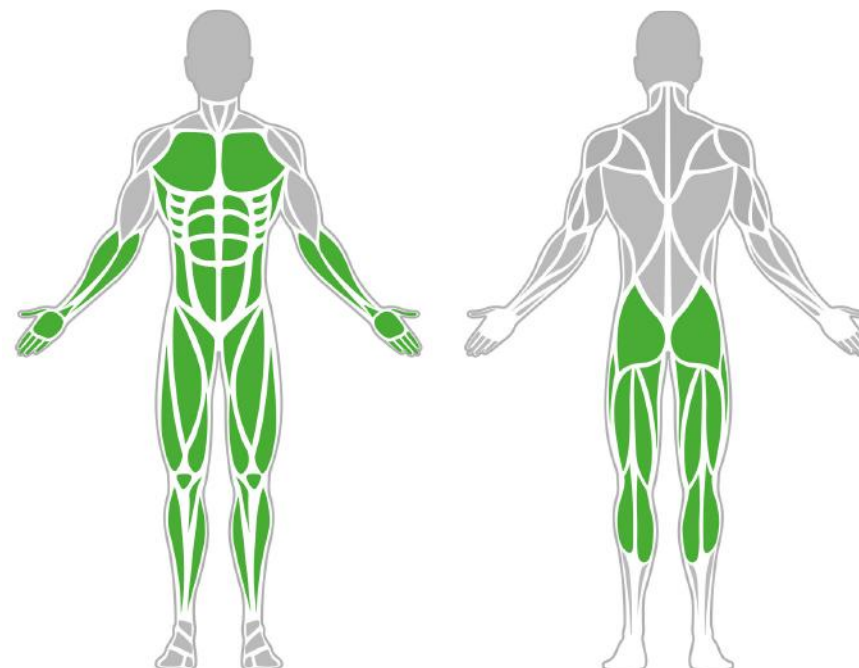




## Muscle Groups Focus



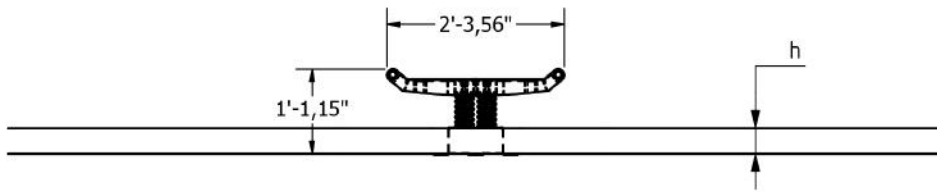
### Balance Board Pro

Similar to strength, power, agility and coordination, the English Football Association's Player DNA theory states that balance is a vital part of a player's physical build, and the balancing board offers the user a wide range of training opportunities to achieve this.

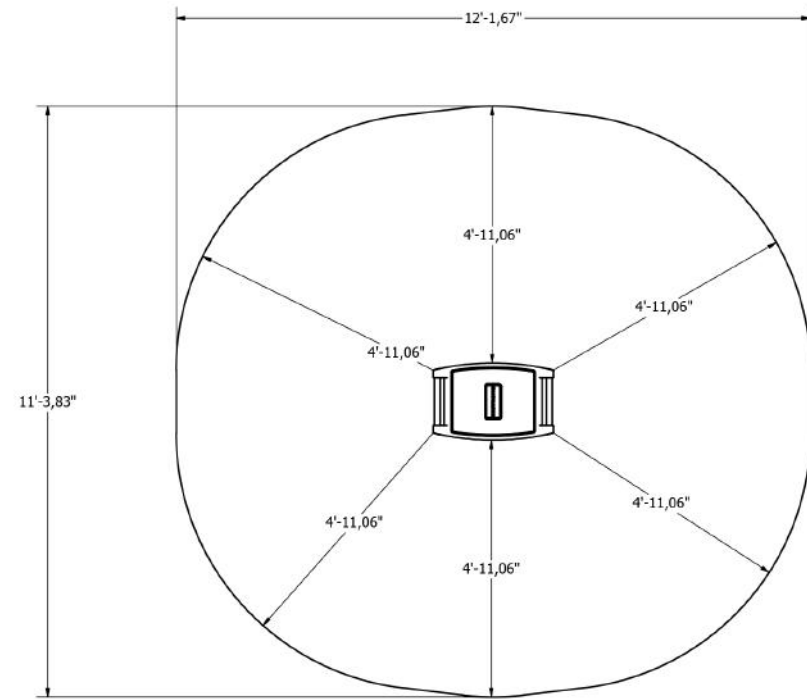
### Attributes

Product code	1-1-161
Certificate	EN 16630, ASTM F3101
Age group	14 + years
Capacity	1 person
Max. weight load	218.26 lbs
Type	Sport Specific
Difficulty level	Medium

## Side View




## Plan View



### Installation information

Number of installers (concrete)	At least 2 people
Total installation time (concrete)	45-75 min.
Number of installers (equipment)	At least 2 people
Total installation time (equipment)	30-60 min.
Excavation volume	7,06 ft <sup>3</sup>
Concrete volume	7,06 ft <sup>3</sup>
Size of the base structure	19.69 x 19.69 x 31.5 „
Anchoring options	In-ground or surface
In combined structures, the volume of concrete required varies.	

### Technical specification

Safety surface area	Around 4.92 ft radius
Net weight	30.86 lbs
Material	S235,KO33
Critic fall height	13.31"
Color options	

For more color options, discuss with your sales representative.

### Warranty

Structure	25 years
Steel	15 years
Paint	2 years
Plastic	5-10 years
Rubber	1-3 years
Moving parts	2 years
Detailed information in the warranty document	

# Material specification



The top surface of the Balance Board Pro is covered with the highest quality non-slip HDPE.



# BESTRONG

 [bestrongworld](#)  [bestrongworld](#)  [usa.bestrong.com](#)  [usa@bestrong.com](mailto:usa@bestrong.com)



Sport and fitness products are compliant with the EN16630 and ASTM F3101 Standards.